

Houston Pilots Forecast Package



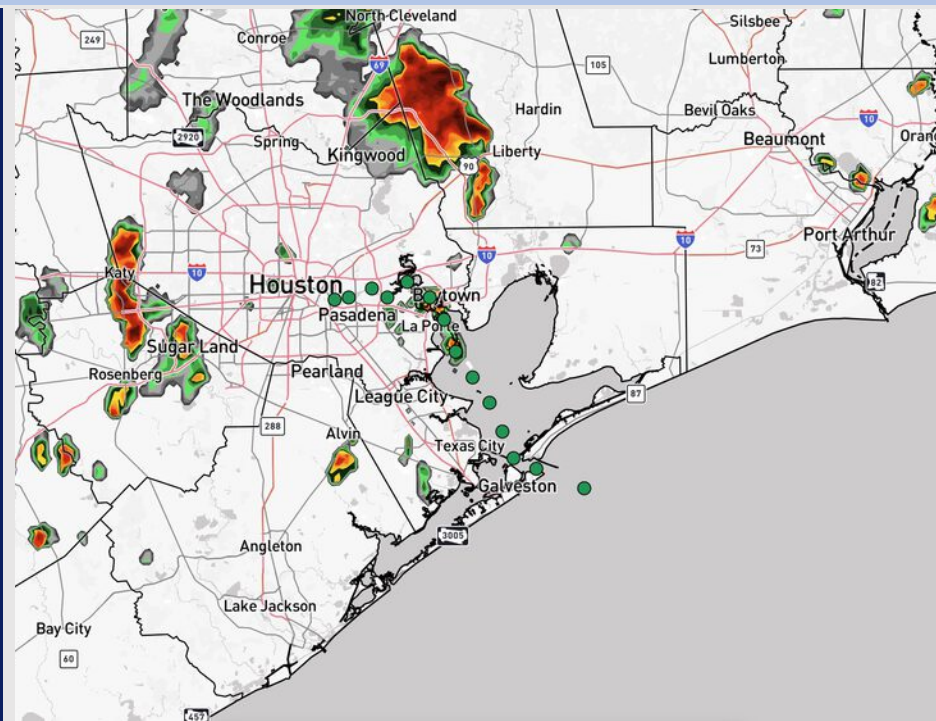
Updated: 2:10 PM CT

Saturday, August 16, 2025

Forecaster: Sam Lang

Weather Headlines

- Scattered showers and storms will be possible through 7 PM today.
- Isolated showers/storms possible from 4 - 10PM Sunday and scattered showers possible from 2 - 8 PM Monday.
- Tropical Storm Erin is favored to stay out in the Atlantic. We'll need to monitor for more tropical development getting into late August.



Current Radar: 2:10 PM CT

As always, please do not hesitate to reach out to us with any forecast questions at **(317)-560-8122**. Press **1** for forecast questions.

You can also access real-time forecast updates and 24/7 meteorological chat assistance on your **Clarity** app. Click [here](#) for login assistance.

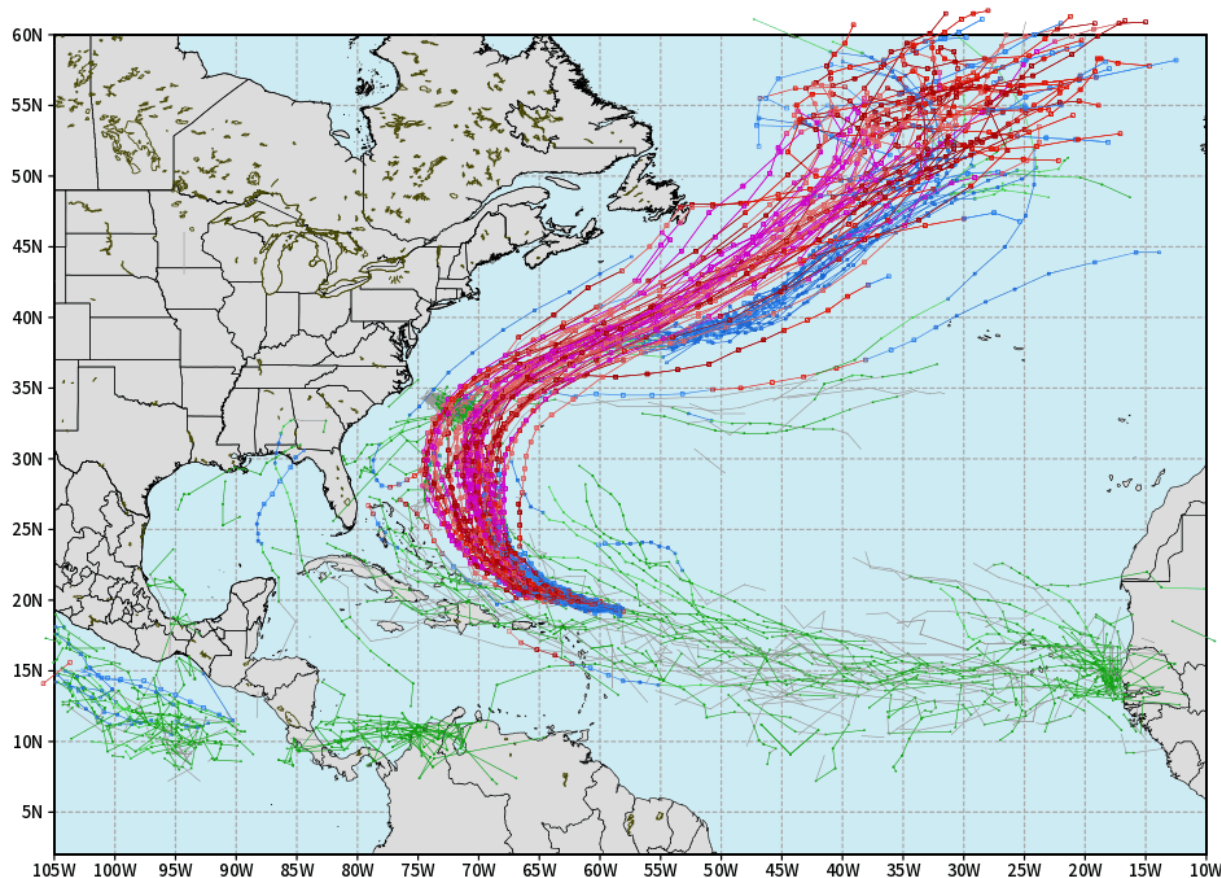


Houston Pilots Tropical Update

10-Day Tropical Outlook

ECMWF ATLANTIC EPS Cyclone Locations --> Next [10-days]
INIT: 00Z16AUG2025 --> UNTIL 00Z26AUG2025

o-o ENSEMBLE MEAN
o-o 1000 - 1010 hPa
o-o 980 - 999 hPa
o-o 960 - 979 hPa
o-o 950 - 959 hPa
o-o < 950 hPa



weathermodels.com

No tropical development favored in the Gulf over the next 10 days.

However, we are monitoring Hurricane Erin in the Atlantic. Currently, we anticipate this storm to continue to turn N, remaining on the E coastline.

Houston Pilots Visibility Chart (miles)



Visibility	Sat 4 pm	Sat 5 pm	Sat 6 pm	Sat 7 pm	Sat 8 pm	Sat 9 pm	Sat 10 pm	Sat 11 pm	Sun 12 am	Sun 1 am	Sun 2 am	Sun 3 am	Sun 4 am	Sun 5 am	Sun 6 am	Sun 7 am	Sun 8 am	Sun 9 am	Sun 10 am	Sun 11 am	Sun 12 pm	Sun 1 pm	Sun 2 pm	Sun 3 pm
Houston Pilots N - 610 Bridge	10	10	10	10	10	10	10	10	10	10	10	10	10	10	10	9	6.9	7.9	10	10	10	10	10	10
Houston Pilots M - Kinder 1	10	10	10	10	10	10	10	10	10	10	10	10	10	10	10	9	6.9	7.9	10	10	10	10	10	10
Houston Pilots L - Greens Bayou	10	10	10	10	10	10	10	10	10	10	10	10	10	10	10	9	6.9	7.9	10	10	10	10	10	10
Houston Pilots K - Shell Crude	10	10	10	10	10	10	10	10	10	10	10	10	10	10	10	9	6.9	7.9	10	10	10	10	10	10
Houston Pilots J - Lynchburg Ferries	10	10	10	10	10	10	10	10	10	10	10	10	10	10	10	9	6.9	7.9	10	10	10	10	10	10
Houston Pilots I - Exxon 3	10	10	10	10	10	10	10	10	10	10	10	10	10	10	10	9	6.9	7.9	10	10	10	10	10	10
Houston Pilots H - Morgans Point	10	10	10	10	10	10	10	10	10	10	10	10	10	10	10	9	6.9	7.9	10	10	10	10	10	10
Houston Pilots G - 75/76	10	10	10	10	10	10	10	10	10	10	10	10	10	10	10	10	6.9	9	10	10	10	10	10	10
Houston Pilots F - 63/64	10	10	10	10	10	10	10	10	10	10	10	10	10	10	10	10	6.9	9	10	10	10	10	10	10
Houston Pilots E - 51/52	10	10	10	10	10	10	10	10	10	10	10	10	10	10	10	10	7.9	9	10	10	10	10	10	10
Houston Pilots D - 37/38	10	10	10	10	10	10	10	10	10	10	10	10	10	10	10	10	7.9	9	10	10	10	10	10	10
Houston Pilots C - 25/26	10	10	10	10	10	10	10	10	10	10	10	10	10	10	10	10	7.9	9	10	10	10	10	10	10
Houston Pilots B - 11/12	10	10	10	10	10	10	10	10	10	10	10	10	10	10	10	10	9	10	10	10	10	10	10	10
Houston Pilots A - 1 & 2 Bravo	10	10	10	10	10	10	10	10	10	10	10	10	10	10	10	10	9	10	10	10	10	10	10	10

NOTE: This is automated data that may/may not agree with the official BAM thinking that's found on the daily slides or special visibility report slides. This data should be used as a guide only

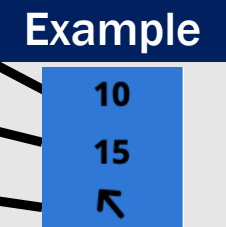
Houston Pilots Wind Chart



Forecast Confidence



Sustained Wind 10 Knots
Gusts 15 Knots
Wind from the SE



Wind	Sat 4 pm	Sat 5 pm	Sat 6 pm	Sat 7 pm	Sat 8 pm	Sat 9 pm	Sat 10 pm	Sat 11 pm	Sun 12 am	Sun 1 am	Sun 2 am	Sun 3 am	Sun 4 am	Sun 5 am	Sun 6 am	Sun 7 am	Sun 8 am	Sun 9 am	Sun 10 am	Sun 11 am	Sun 12 pm	Sun 1 pm	Sun 2 pm	Sun 3 pm
Houston Pilots N - 610 Bridge	6 13 ↖	7 14 ↖	7 14 ↖	8 15 ↖	8 15 ↖	7 13 ↖	6 10 ↖	5 9 ↖	3 7 ↑	3 7 ↑	2 6 ↑	2 6 ↗	2 5 ↗	1 5 ↗	1 5 →	1 3 ↘	1 5 ↘	1 3 ↘	1 5 ↘	2 5 ↘	3 6 ↘	3 7 ↘	3 8 ↘	3 8 ←
Houston Pilots M - Kinder 1	6 13 ↖	7 14 ↖	8 14 ↖	8 15 ↖	8 14 ↖	6 13 ↖	6 10 ↖	5 9 ↖	3 7 ↑	3 7 ↑	2 6 ↑	2 5 ↗	2 5 ↗	1 5 ↗	1 3 →	1 3 ↘	1 3 ↘	1 3 ↘	1 5 ↘	2 5 ↘	3 6 ↘	3 7 ↘	3 8 ↘	3 7 ←
Houston Pilots L - Greens Bayou	7 13 ↖	7 14 ↖	7 14 ↖	7 15 ↖	7 14 ↖	6 13 ↖	6 10 ↖	5 9 ↖	3 7 ↑	3 7 ↑	2 6 ↑	2 5 ↗	1 5 ↗	1 5 ↗	1 3 →	1 3 ↘	1 3 ↘	1 3 ↘	1 5 ↘	2 5 ↘	3 6 ↘	3 7 ↘	3 7 ↘	3 7 ←
Houston Pilots K - Shell Crude	7 13 ↖	8 14 ↖	8 14 ↖	8 14 ↖	7 14 ↖	6 13 ↖	6 10 ↖	3 9 ↖	3 7 ↑	3 7 ↑	2 6 ↑	2 5 ↗	1 5 ↗	1 5 ↗	1 3 →	1 3 ↘	1 3 ↘	1 3 ↘	1 5 ↘	2 5 ↘	3 6 ↘	3 7 ↘	3 7 ↘	3 7 ←
Houston Pilots J - Lynchburg Ferries	7 13 ↖	7 14 ↖	7 14 ↖	7 14 ↖	7 14 ↖	6 13 ↖	5 10 ↖	3 9 ↖	3 7 ↑	2 6 ↑	2 5 ↑	1 5 ↗	1 3 ↗	1 3 ↗	1 3 →	1 3 ↘	1 3 ↘	1 3 ↘	1 5 ↘	2 5 ↘	3 6 ↘	3 7 ↘	3 7 ↘	3 7 ←
Houston Pilots I - Exxon 3	10 15 ↖	10 16 ↖	10 15 ↖	10 15 ↖	10 15 ↖	10 15 ↖	9 13 ↖	8 12 ↖	7 10 ↑	6 9 ↑	6 8 ↑	6 7 ↗	5 7 ↗	5 7 ↗	3 7 →	3 7 ↘	3 7 ↘	3 6 ↘	3 6 ↘	3 7 ↘	3 7 ↘	5 8 ↘	5 9 ↘	6 9 ←
Houston Pilots H - Morgans Point	9 15 ↖	10 16 ↖	10 15 ↖	10 15 ↖	10 15 ↖	10 15 ↖	9 13 ↖	8 12 ↖	7 10 ↑	6 9 ↑	6 8 ↑	6 7 ↗	5 7 ↗	5 7 ↗	3 7 →	3 7 ↘	3 7 ↘	3 7 ↘	3 7 ↘	3 7 ↘	3 7 ↘	5 8 ↘	5 9 ↘	6 9 ←
Houston Pilots G - 75/76	9 15 ↖	10 16 ↖	10 15 ↖	10 15 ↖	10 16 ↖	10 15 ↖	9 14 ↖	9 13 ↖	8 12 ↑	8 10 ↑	7 9 ↑	6 8 ↗	6 8 ↗	6 7 ↗	6 7 →	6 7 ↘	5 7 ↘	6 7 ↘	5 7 ↘	5 7 ↘	3 7 ↘	3 8 ↘	3 9 ↘	5 9 ←
Houston Pilots F - 63/64	9 15 ↖	10 16 ↖	10 15 ↖	10 15 ↖	10 15 ↖	10 15 ↖	9 13 ↖	8 13 ↖	8 12 ↑	7 10 ↑	7 9 ↑	6 8 ↗	6 8 ↗	6 7 ↗	6 7 →	6 7 ↘	6 7 ↘	5 7 ↘	5 7 ↘	5 8 ↘	3 7 ↘	3 8 ↘	3 9 ↘	3 9 ←
Houston Pilots E - 51/52	8 14 ↖	9 15 ↖	9 15 ↖	10 15 ↖	10 15 ↖	9 14 ↖	9 13 ↖	8 13 ↖	8 12 ↑	8 10 ↑	7 9 ↑	6 8 ↗	6 8 ↗	6 7 ↗	6 7 →	6 7 ↘	5 7 ↘	6 7 ↘	5 7 ↘	5 8 ↘	3 7 ↘	3 8 ↘	3 9 ↘	3 9 ←
Houston Pilots D - 37/38	8 13 ↖	8 15 ↖	9 14 ↖	9 15 ↖	10 15 ↖	9 14 ↖	9 13 ↖	8 13 ↖	8 12 ↑	8 10 ↑	7 9 ↑	6 8 ↗	6 8 ↗	6 7 ↗	6 7 →	6 7 ↘	5 7 ↘	5 7 ↘	5 7 ↘	5 8 ↘	3 7 ↘	3 8 ↘	3 8 ↘	3 9 ←
Houston Pilots C - 25/26	8 13 ↖	8 14 ↖	8 13 ↖	9 15 ↖	9 14 ↖	9 14 ↖	8 13 ↖	8 12 ↖	8 12 ↑	7 10 ↑	7 9 ↑	6 8 ↗	6 8 ↗	6 7 ↗	5 7 →	5 7 ↘	5 7 ↘	5 7 ↘	5 7 ↘	5 8 ↘	5 8 ↘	3 7 ↘	3 8 ↘	3 8 ←
Houston Pilots B - 11/12	7 13 ↖	8 14 ↖	8 13 ↖	8 14 ↖	8 13 ↖	8 13 ↖	7 12 ↖	7 12 ↖	6 10 ↑	6 10 ↑	6 9 ↑	6 8 ↗	5 8 ↗	5 7 ↗	3 7 →	3 7 ↘	3 7 ↘	3 7 ↘	3 7 ↘	5 8 ↘	3 8 ↘	3 8 ↘	3 8 ↘	3 8 ←
Houston Pilots A - 1 & 2 Bravo	6 13 ↖	8 13 ↖	8 13 ↖	8 14 ↖	8 14 ↖	8 14 ↖	8 13 ↖	8 13 ↖	8 12 ↑	8 10 ↑	7 9 ↑	6 8 ↗	6 8 ↗	6 7 ↗	6 7 →	6 7 ↘	5 7 ↘	5 7 ↘	5 7 ↘	5 8 ↘	3 7 ↘	3 8 ↘	3 8 ↘	3 8 ←

NOTE: This is automated data that may/may not agree with the official BAM thinking that's found on the daily slides.
This data should be used as a guide only.

Houston Pilots: SAT. 8/16/2025

Forecast Discussion

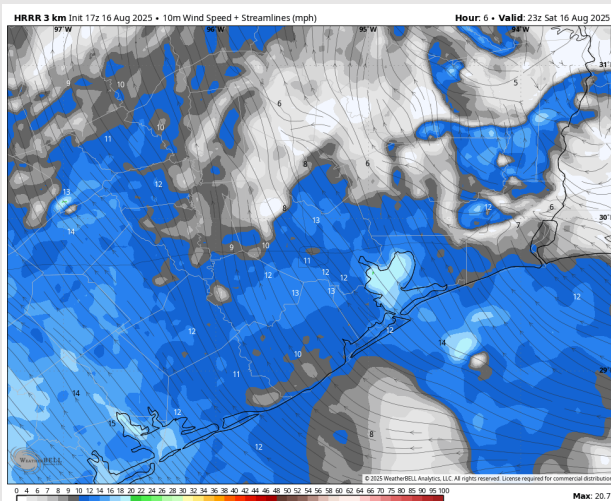
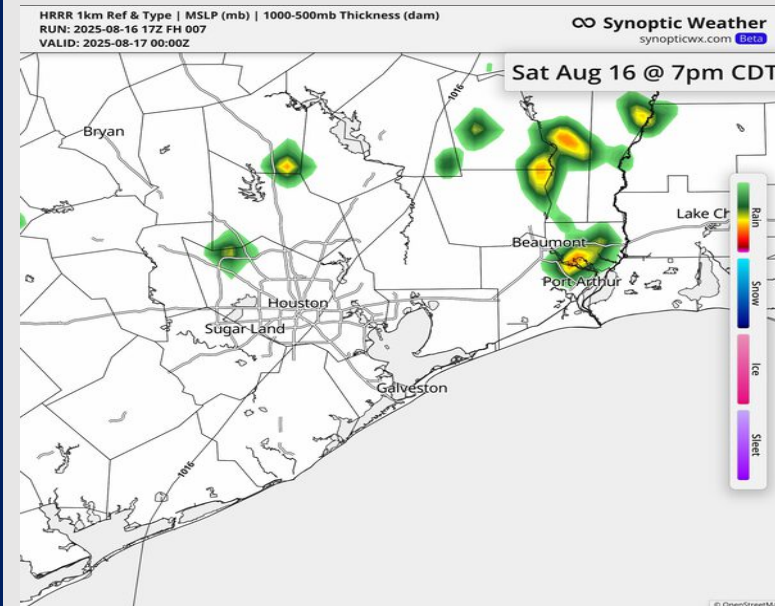
Precip: Isolated showers/storms possible through 7PM today. Lightning and a few gusts of 25+ kts can be possible.

Wind: Winds will be out of the SSE today. **N of Morgan's Point:** Winds will be at 6 – 11 kts. **S of Morgan's Point:** Winds will be at 8 – 13 kts.

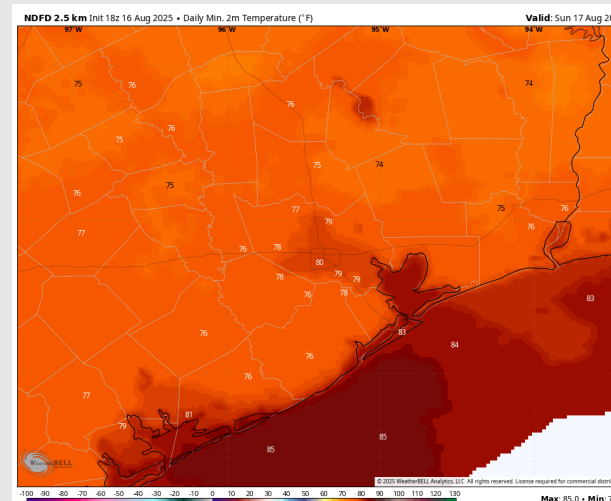
Low Temps: **N of Morgan's Point:** High 70s F. **S of Morgan's Point:** Low 80s F.

Visibility: No visibility concerns today.

Precip Image: 7 PM CT



Wind Speed:
6 PM CT



Low Temps
SUN AM

Houston Pilots: SUN. 8/17/2025

Forecast Discussion

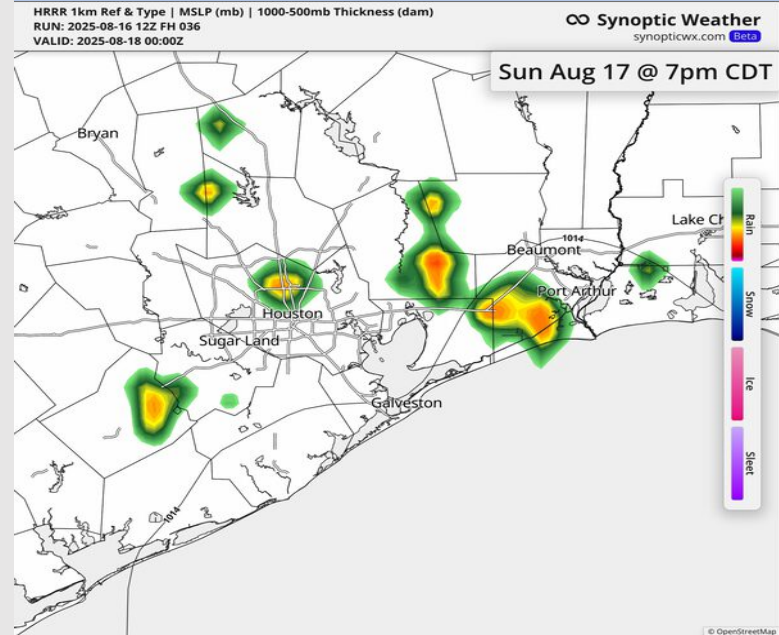
Precip: Isolated showers will be possible from 4PM – 10PM Sunday.

Wind: Winds will be out of the NW before shifting to out of the SE at 2PM Sunday. **N of Morgan's Point:** Winds will be at 3 – 8 kts. **S of Morgan's Point:** Winds will be at 5 – 10 kts.

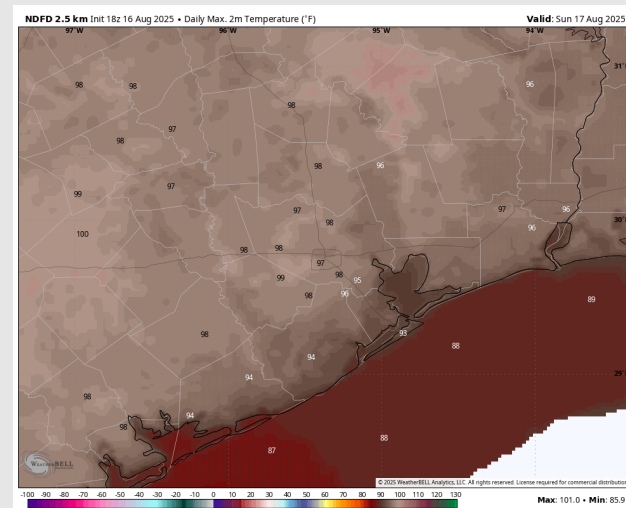
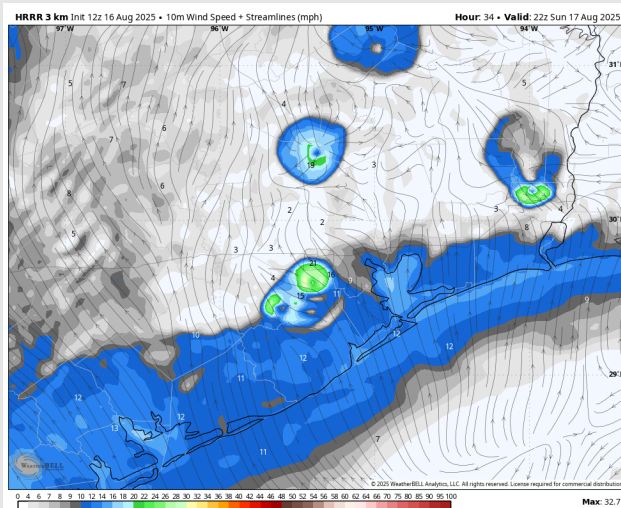
High Temps: **N of Morgan's Point:** Mid 90s F. **S of Morgan's Point:** Low 90s F.

Visibility: No visibility concerns Sunday.

Precip Image: 7 PM CT



Wind Speed:
5 PM CT



High Temps
Sunday

Houston Pilots: MON. 8/18/2025

Forecast Discussion

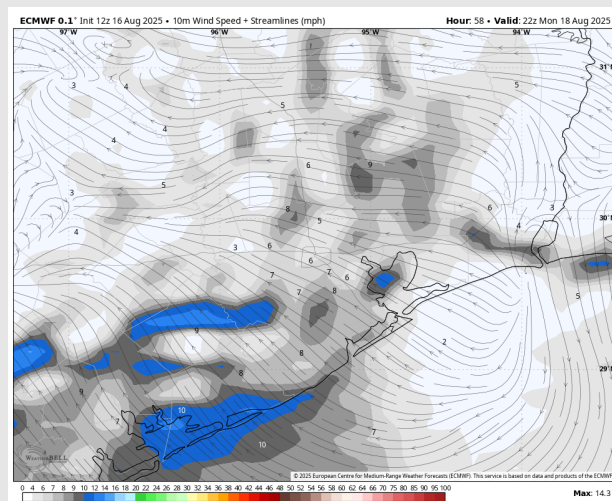
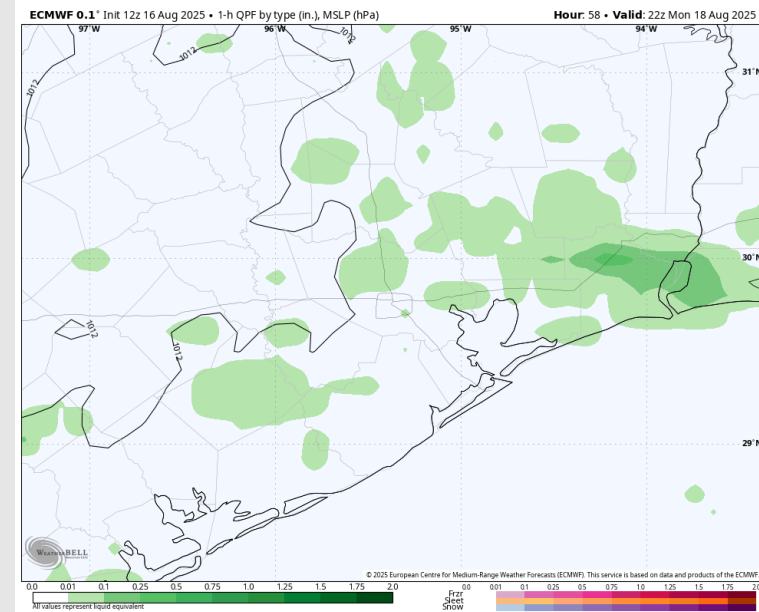
Precip: Scattered showers and storms will be possible from 2PM – 8PM Monday.

Wind: Winds will be variable Monday. **N of Morgan's Point:** Winds will be at 2 – 7 kts. **S of Morgan's Point:** Winds will be at 1 – 6 kts

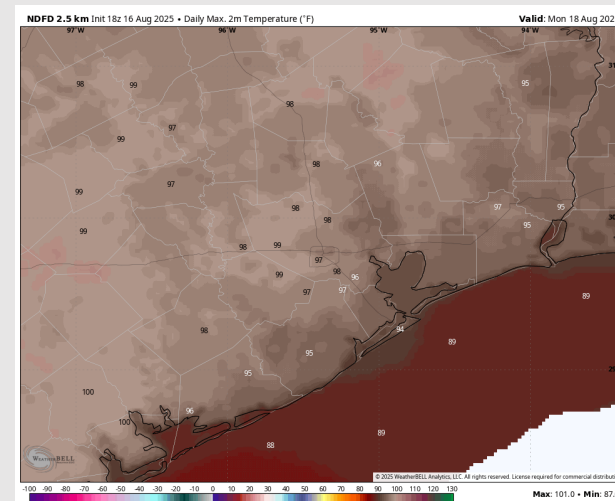
High Temps: **N of Morgan's Point:** Mid 90s F. **S of Morgan's Point:** Low 90s F.

Visibility: No concerns Monday. Visibilities may be reduced under heavier downpours.

Precip Image: 5 PM CT



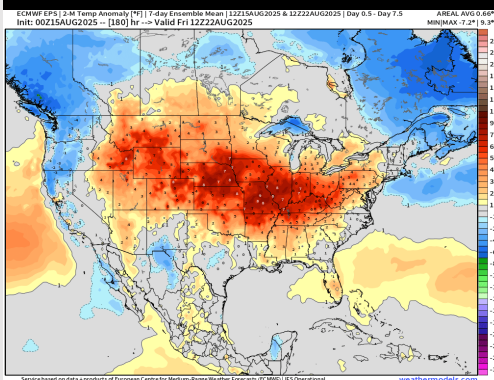
Wind Speed:
5 PM CT



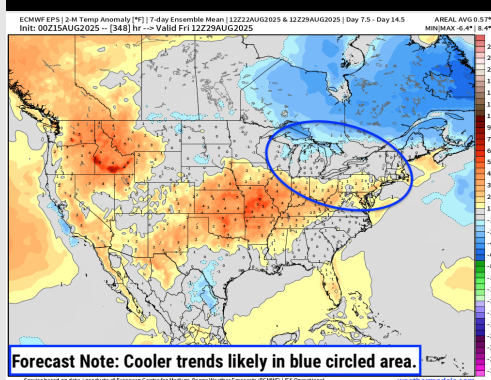
High Temps
Monday

Houston Pilots: 8/16/25

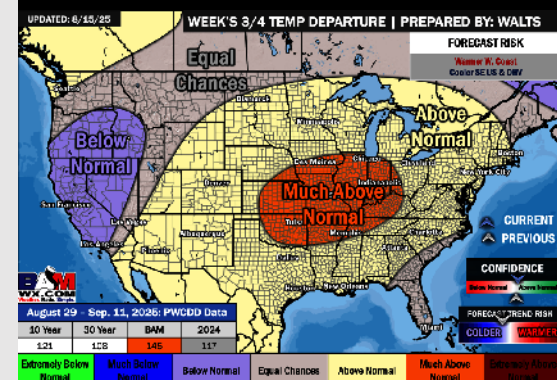
Next 7 Day Temperature Departure



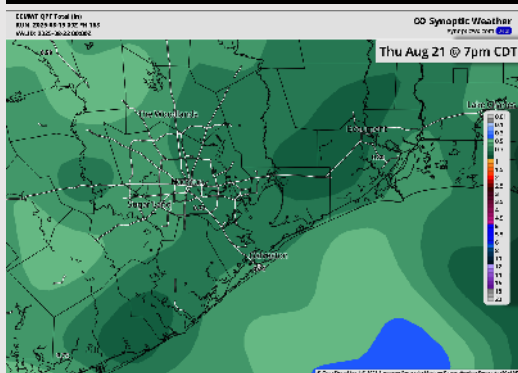
8-14 Day Temperature Departure



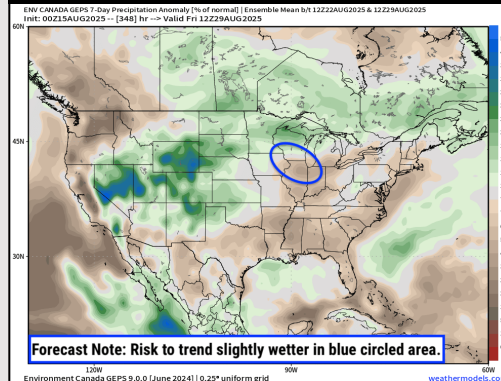
15-30 Day Temperature Departure



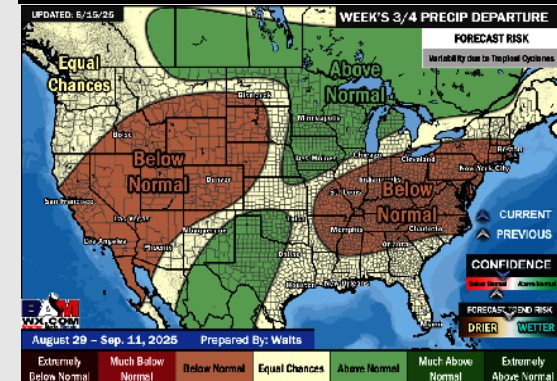
Next 7 Day Total Precipitation



8-14 Day % of Average Precip.



15-30 Day % of Average Precip.



- Temps are expected to be near normal for the next 7 days with scattered rain chances throughout the weekend.
- Near normal temperatures and below normal rain chances are favored for days 8 – 14.
- Above normal temperatures are favored for the end of August/early September with near normal rainfall chances.