

# Houston Pilots Forecast Package



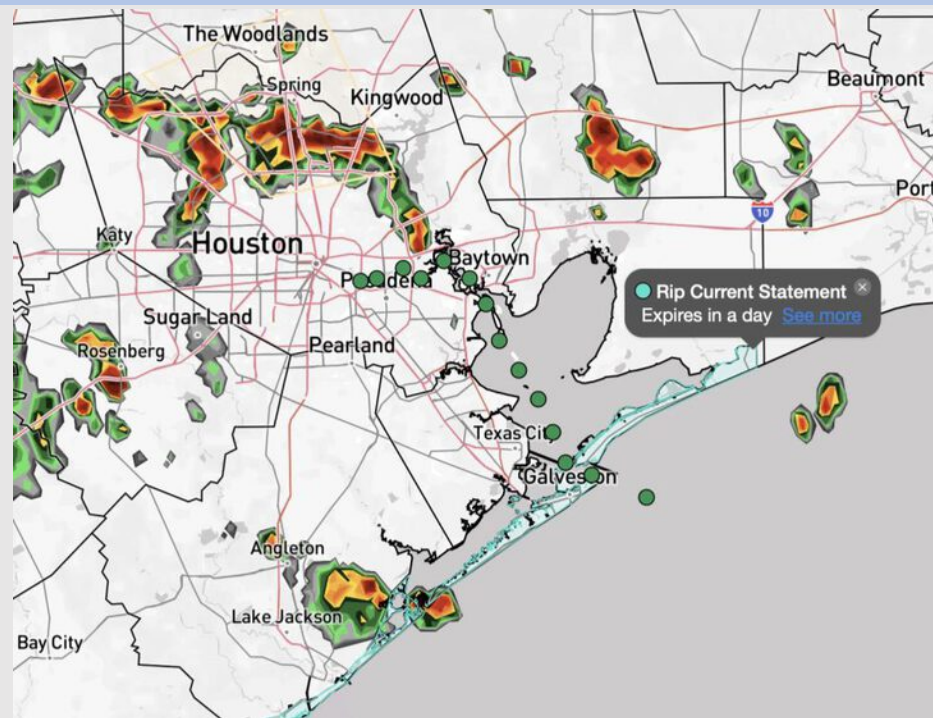
Updated: 12:30 PM CT

Friday, August 15, 2025

Forecaster: Alyssa Elliott

## Weather Headlines

- A few scattered showers / storms will be possible through ~6 PM today bringing downpours, lightning and a few isolated gusts of 30 – 40 kts.
- Waves will be choppy late this PM into early SAT AM with heights nearing 3 ft at the Boarding Station.
- Tropical Storm Erin is favored to stay out in the Atlantic. We'll need to monitor for more tropical development getting into late August.



Current Radar: 12:20 PM CT

As always, please do not hesitate to reach out to us with any forecast questions at (317)-560-8122. Press 1 for forecast questions.

You can also access real-time forecast updates and 24/7 meteorological chat assistance on your [Clarity](#) app. Click [here](#) for login assistance.

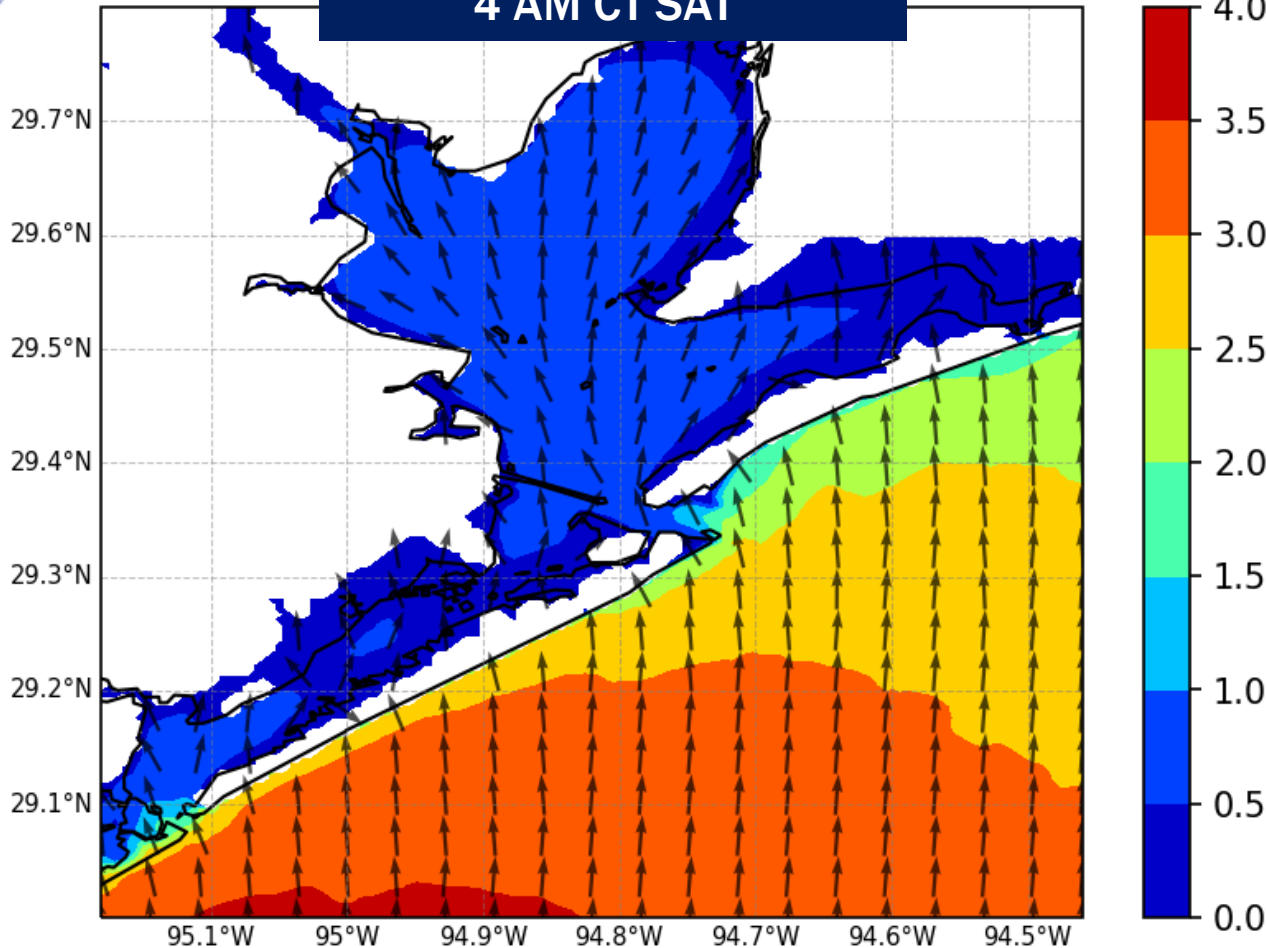


# Wave Height Forecast Update



NWPS Significant Wave Height (ft) and Peak Wave Direction

4 AM CT SAT



Watching for a risk that waves get choppy in the Gulf this evening, starting around 10 PM and continuing until 10 AM SAT.

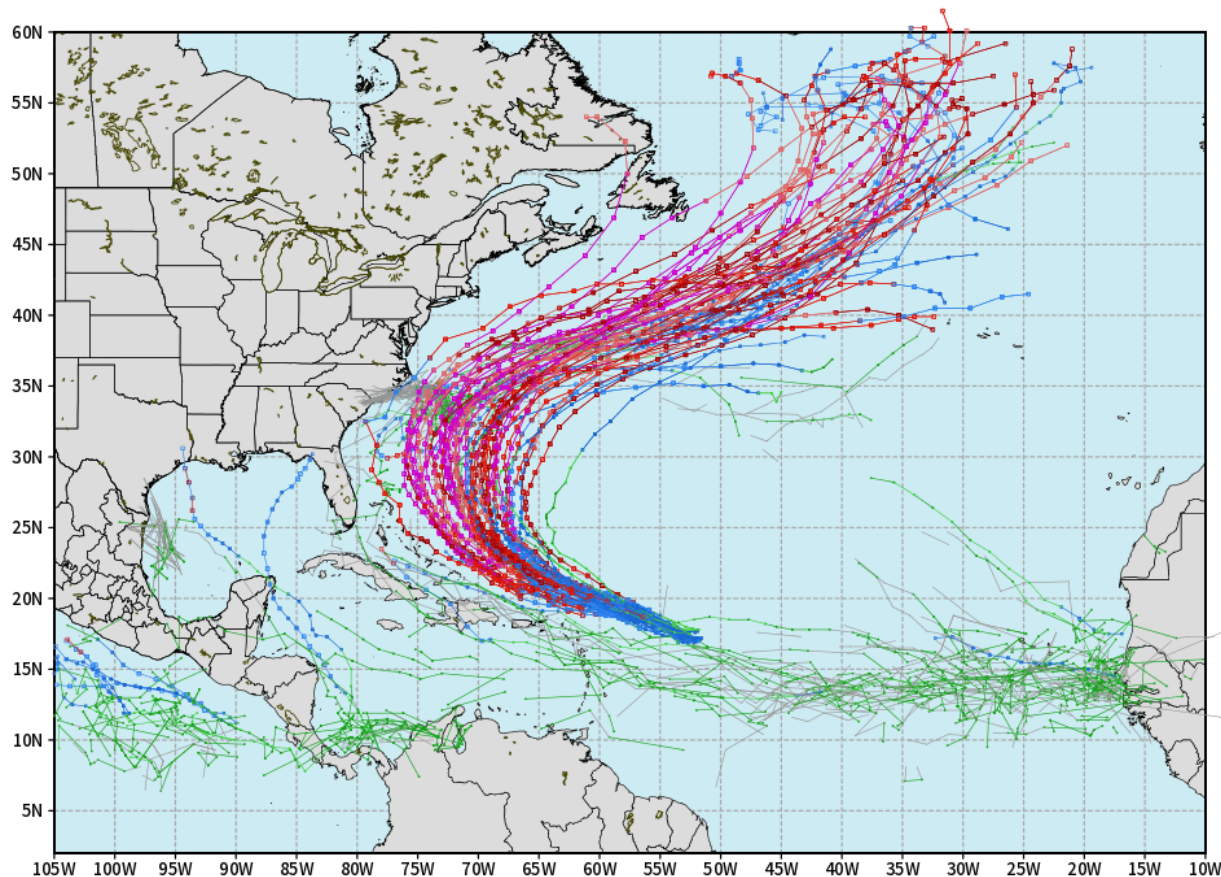
Wave heights will near 3ft at the Boarding Station with the peak for this risk being around 4 AM.

# Houston Pilots Tropical Update

## 10-Day Tropical Outlook

ECMWF ATLANTIC EPS Cyclone Locations --> Next [10-days]  
INIT: 00Z15AUG2025 --> UNTIL 00Z25AUG2025

o-o ENSEMBLE MEAN  
o-o 1000 - 1010 hPa  
o-o 980 - 999 hPa  
o-o 960 - 979 hPa  
o-o 950 - 959 hPa  
o-o < 950 hPa



[weathermodels.com](http://weathermodels.com)

No tropical development favored in the Gulf over the next 10 days.

However, we are monitoring Tropical Storm Erin in the Atlantic. Currently, we anticipate this storm to continue to turn N, remaining on the E coastline.

# Houston Pilots Visibility Chart (miles)



Visibility	Fri 1 pm	Fri 2 pm	Fri 3 pm	Fri 4 pm	Fri 5 pm	Fri 6 pm	Fri 7 pm	Fri 8 pm	Fri 9 pm	Fri 10 pm	Fri 11 pm	Sat 12 am	Sat 1 am	Sat 2 am	Sat 3 am	Sat 4 am	Sat 5 am	Sat 6 am	Sat 7 am	Sat 8 am	Sat 9 am	Sat 10 am	Sat 11 am	Sat 12 pm
Houston Pilots N - 610 Bridge	10	10	10	10	10	10	10	10	10	10	10	10	10	10	10	10	10	10	10	6.9	10	10	10	10
Houston Pilots M - Kinder 1	10	10	10	10	10	10	10	10	10	10	10	10	10	10	10	10	10	10	10	6.9	10	10	10	10
Houston Pilots L - Greens Bayou	10	10	10	10	10	10	10	10	10	10	10	10	10	10	10	10	10	10	10	6.9	10	10	10	10
Houston Pilots K - Shell Crude	10	10	10	10	10	10	10	10	10	10	10	10	10	10	10	10	10	10	10	6.9	10	10	10	10
Houston Pilots J - Lynchburg Ferries	10	10	10	10	10	10	10	10	10	10	10	10	10	10	10	10	10	10	10	6.9	10	10	10	10
Houston Pilots I - Exxon 3	10	10	10	10	10	10	10	10	10	10	10	10	10	10	10	10	10	10	10	7.9	10	10	10	10
Houston Pilots H - Morgans Point	10	10	10	10	10	10	10	10	10	10	10	10	10	10	10	10	10	10	10	9	10	10	10	10
Houston Pilots G - 75/76	10	10	10	10	10	10	10	10	10	10	10	10	10	10	10	10	10	10	10	10	10	10	10	10
Houston Pilots F - 63/64	10	10	10	10	10	10	10	10	10	10	10	10	10	10	10	10	10	10	10	10	10	10	10	10
Houston Pilots E - 51/52	10	10	10	10	10	10	10	10	10	10	10	10	10	10	10	10	10	10	10	10	10	10	10	10
Houston Pilots D - 37/38	10	10	10	10	10	10	10	10	10	10	10	10	10	10	10	10	10	10	10	10	10	10	10	10
Houston Pilots C - 25/26	10	10	10	10	10	10	10	10	10	10	10	10	10	10	10	10	10	10	10	10	10	10	10	10
Houston Pilots B - 11/12	10	10	10	10	10	10	10	10	10	10	10	10	10	10	10	10	10	10	10	10	10	10	10	10
Houston Pilots A - 1 & 2 Bravo	10	10	10	10	10	10	10	10	10	10	10	10	10	10	10	10	10	10	10	10	10	10	10	10

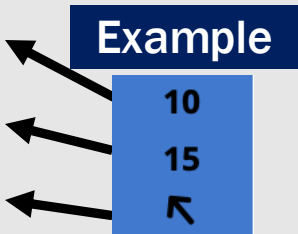
**NOTE: This is automated data that may/may not agree with the official BAM thinking that's found on the daily slides or special visibility report slides. This data should be used as a guide only**



# Houston Pilots Wind Chart



Sustained Wind 10 Knots  
Gusts 15 Knots  
Wind from the SE



Wind	Fri 1 pm	Fri 2 pm	Fri 3 pm	Fri 4 pm	Fri 5 pm	Fri 6 pm	Fri 7 pm	Fri 8 pm	Fri 9 pm	Fri 10 pm	Fri 11 pm	Sat 12 am	Sat 1 am	Sat 2 am	Sat 3 am	Sat 4 am	Sat 5 am	Sat 6 am	Sat 7 am	Sat 8 am	Sat 9 am	Sat 10 am	Sat 11 am	Sat 12 pm
Houston Pilots N - 610 Bridge	7 15 ↖	8 16 ↖	8 17 ↖	9 18 ↖	9 18 ↖	9 20 ↖	9 18 ↖	9 17 ↖	8 16 ↖	8 15 ↖	6 14 ↖	6 12 ↖	6 10 ↖	5 10 ↖	5 9 ↖	3 8 ↖	3 8 ↖	3 7 ↖	2 6 ↖	2 6 ↖	2 6 ↖	3 7 ↖	3 8 ↖	5 10 ↖
Houston Pilots M - Kinder 1	7 15 ↖	8 16 ↖	8 17 ↖	9 18 ↖	9 18 ↖	9 20 ↖	9 18 ↖	9 17 ↖	8 16 ↖	7 15 ↖	6 14 ↖	6 12 ↖	6 10 ↖	5 10 ↖	5 9 ↖	3 8 ↖	3 7 ↖	3 7 ↖	2 6 ↖	2 6 ↖	2 6 ↖	3 7 ↖	3 8 ↖	6 10 ↖
Houston Pilots L - Greens Bayou	7 14 ↖	8 16 ↖	8 16 ↖	9 18 ↖	9 18 ↖	9 18 ↖	9 17 ↖	8 17 ↖	8 16 ↖	7 15 ↖	6 13 ↖	6 12 ↖	6 10 ↖	5 9 ↖	3 9 ↖	3 8 ↖	3 7 ↖	3 6 ↖	2 5 ↖	2 5 ↖	2 6 ↖	3 6 ↖	3 8 ↖	5 9 ↖
Houston Pilots K - Shell Crude	7 14 ↖	8 16 ↖	8 16 ↖	9 18 ↖	9 18 ↖	9 18 ↖	9 17 ↖	8 17 ↖	8 16 ↖	7 15 ↖	6 14 ↖	6 13 ↖	6 10 ↖	5 10 ↖	3 9 ↖	3 8 ↖	3 7 ↖	3 6 ↖	2 5 ↖	2 5 ↖	2 6 ↖	3 6 ↖	3 8 ↖	5 9 ↖
Houston Pilots J - Lynchburg Ferries	7 14 ↖	8 16 ↖	8 16 ↖	9 18 ↖	9 18 ↖	9 18 ↖	9 17 ↖	8 17 ↖	8 16 ↖	6 15 ↖	6 13 ↖	6 12 ↖	5 10 ↖	5 9 ↖	3 9 ↖	3 8 ↖	3 7 ↖	2 6 ↖	2 5 ↖	2 5 ↖	2 6 ↖	2 6 ↖	3 8 ↖	5 9 ↖
Houston Pilots I - Exxon 3	9 15 ↖	10 17 ↖	12 18 ↖	13 20 ↖	13 20 ↖	13 20 ↖	13 18 ↖	13 18 ↖	13 17 ↖	13 17 ↖	12 17 ↖	10 16 ↖	10 16 ↖	10 15 ↖	9 14 ↖	8 13 ↖	8 12 ↖	7 9 ↖	6 8 ↖	6 7 ↖	6 8 ↖	6 8 ↖	6 9 ↖	6 10 ↖
Houston Pilots H - Morgans Point	9 15 ↖	10 17 ↖	12 18 ↖	13 20 ↖	13 20 ↖	13 20 ↖	13 18 ↖	13 18 ↖	13 17 ↖	13 17 ↖	12 17 ↖	12 16 ↖	10 16 ↖	10 15 ↖	9 14 ↖	8 13 ↖	8 12 ↖	7 10 ↖	6 9 ↖	6 8 ↖	6 8 ↖	6 8 ↖	6 9 ↖	6 10 ↖
Houston Pilots G - 75/76	8 16 ↖	10 17 ↖	10 18 ↖	13 20 ↖	13 21 ↖	13 20 ↖	13 20 ↖	13 18 ↖	13 18 ↖	13 18 ↖	13 18 ↖	13 17 ↖	13 17 ↖	12 17 ↖	10 15 ↖	10 15 ↖	9 14 ↖	8 13 ↖	8 10 ↖	7 9 ↖	6 9 ↖	6 9 ↖	6 10 ↖	6 10 ↖
Houston Pilots F - 63/64	8 15 ↖	9 17 ↖	10 17 ↖	12 20 ↖	13 20 ↖	13 20 ↖	13 20 ↖	13 18 ↖	13 17 ↖	13 18 ↖	13 17 ↖	13 17 ↖	13 17 ↖	12 17 ↖	10 15 ↖	10 15 ↖	10 14 ↖	8 13 ↖	8 12 ↖	7 9 ↖	6 9 ↖	6 9 ↖	6 10 ↖	6 10 ↖
Houston Pilots E - 51/52	8 16 ↖	10 17 ↖	10 17 ↖	12 18 ↖	13 20 ↖	13 20 ↖	13 18 ↖	13 18 ↖	13 18 ↖	13 18 ↖	13 18 ↖	13 17 ↖	13 17 ↖	13 17 ↖	12 16 ↖	10 15 ↖	10 15 ↖	9 13 ↖	8 12 ↖	7 9 ↖	7 9 ↖	6 10 ↖	6 10 ↖	6 10 ↖
Houston Pilots D - 37/38	9 16 ↖	10 16 ↖	10 17 ↖	12 18 ↖	13 18 ↖	13 20 ↖	13 18 ↖	13 18 ↖	13 18 ↖	13 18 ↖	13 18 ↖	13 18 ↖	13 18 ↖	13 17 ↖	12 16 ↖	10 15 ↖	10 15 ↖	9 14 ↖	8 13 ↖	8 10 ↖	7 10 ↖	6 10 ↖	6 10 ↖	6 10 ↖
Houston Pilots C - 25/26	9 15 ↖	10 16 ↖	10 17 ↖	12 18 ↖	13 18 ↖	13 18 ↖	13 18 ↖	13 17 ↖	13 17 ↖	13 17 ↖	13 17 ↖	13 17 ↖	13 17 ↖	12 17 ↖	12 16 ↖	10 15 ↖	10 15 ↖	9 14 ↖	8 13 ↖	8 10 ↖	7 10 ↖	6 10 ↖	6 10 ↖	6 10 ↖
Houston Pilots B - 11/12	8 15 ↖	9 16 ↖	10 16 ↖	10 17 ↖	12 17 ↖	12 18 ↖	12 17 ↖	10 17 ↖	10 17 ↖	10 17 ↖	10 17 ↖	10 17 ↖	10 17 ↖	10 17 ↖	9 15 ↖	8 15 ↖	8 15 ↖	8 14 ↖	7 13 ↖	6 10 ↖	6 10 ↖	6 10 ↖	6 10 ↖	6 10 ↖
Houston Pilots A - 1 & 2 Bravo	8 15 ↖	9 16 ↖	10 16 ↖	10 17 ↖	12 17 ↖	12 18 ↖	12 18 ↖	13 17 ↖	13 18 ↖	13 18 ↖	13 18 ↖	13 18 ↖	13 18 ↖	13 18 ↖	13 17 ↖	12 16 ↖	10 16 ↖	10 15 ↖	8 14 ↖	8 12 ↖	7 10 ↖	6 10 ↖	6 10 ↖	6 10 ↖

NOTE: This is automated data that may/may not agree with the official BAM thinking that's found on the daily slides.  
This data should be used as a guide only.

# Houston Pilots: FRI. 8/15/2025

## Forecast Discussion

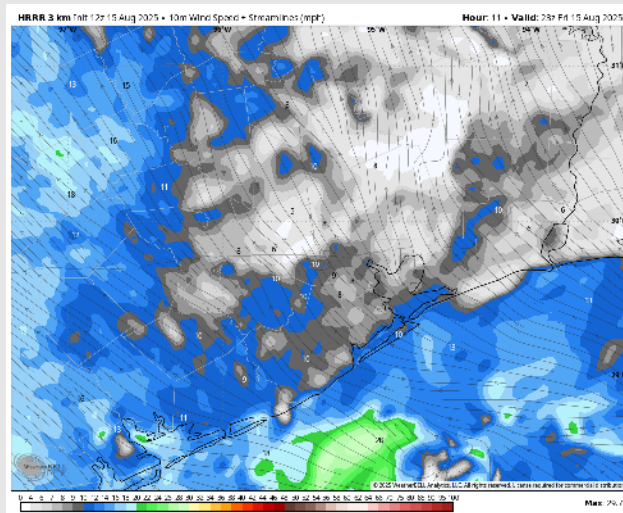
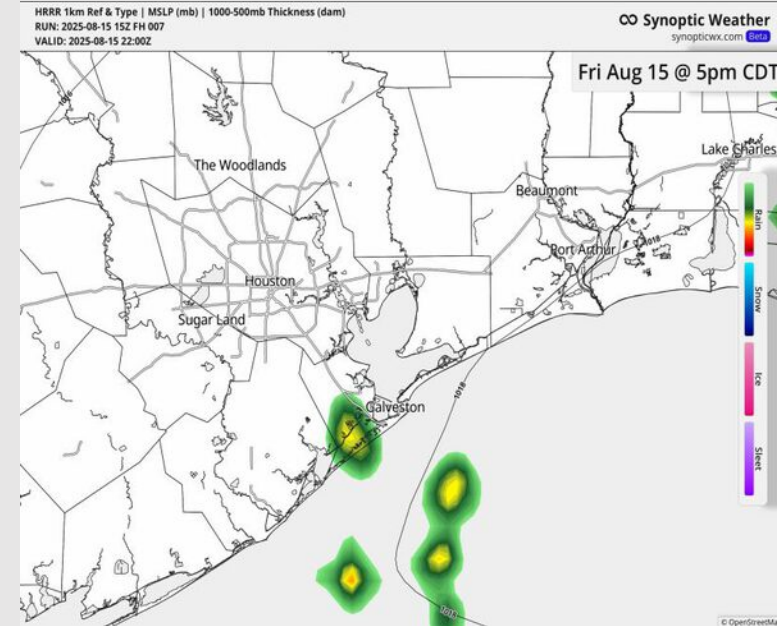
**Precip:** Isolated showers and storms will be possible through 6PM. A few storms may contain lightning, wind gusts of 30 – 40 kts, and heavy downpours.

**Wind:** Winds will be out of the SSE for the remainder of the day. **N of Morgan's Point:** Winds will be at 5 – 10 kts. **S of Morgan's Point:** Winds will be at 10 – 15 kts with non-storm gusts of 20 kts.

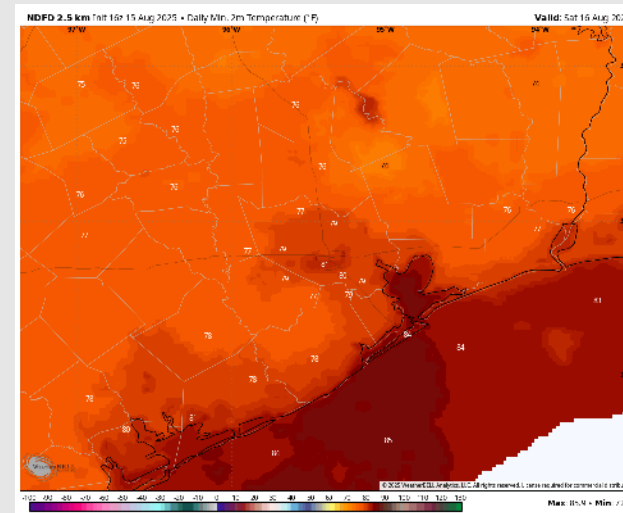
**Low Temps:** **N of Morgan's Point:** Low 80s F. **S of Morgan's Point:** Mid 80s F.

**Visibility:** No fog concerns today, however, visibilities may be reduced under heavier downpours.

## Precip Image: 5 PM CT



Wind Speed:  
6 PM CT



Low Temps  
SAT AM

# Houston Pilots: SAT. 8/16/2025

## Forecast Discussion

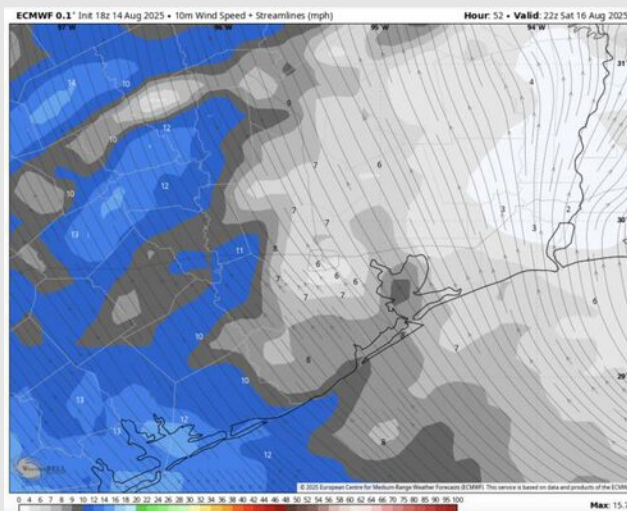
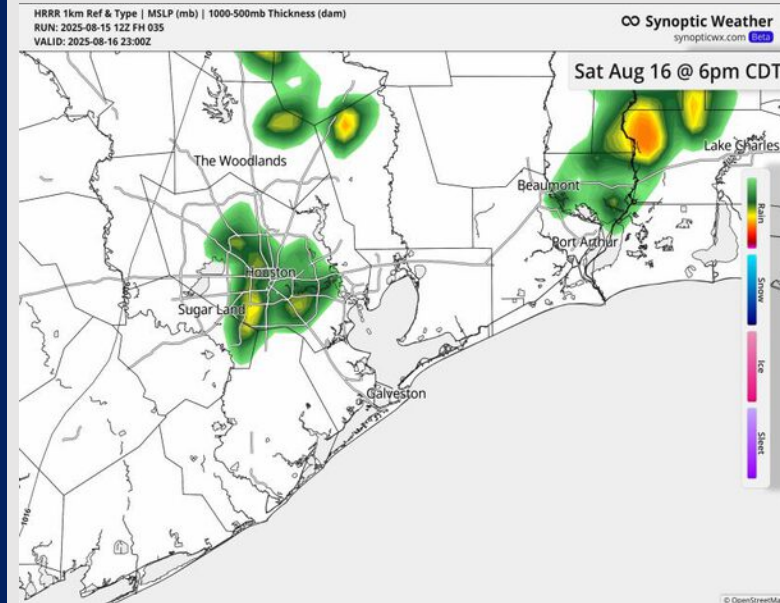
**Precip:** Scattered showers and storms will be possible for ALL stations from 1PM – 5PM Saturday. Lightning and a few gusts of 25+ kts can be possible.

**Wind:** Winds will be out of the SSE Saturday. **N of Morgan's Point:** Winds will be at 2 – 7 kts. **S of Morgan's Point:** Winds will be at 4 – 9 kts.

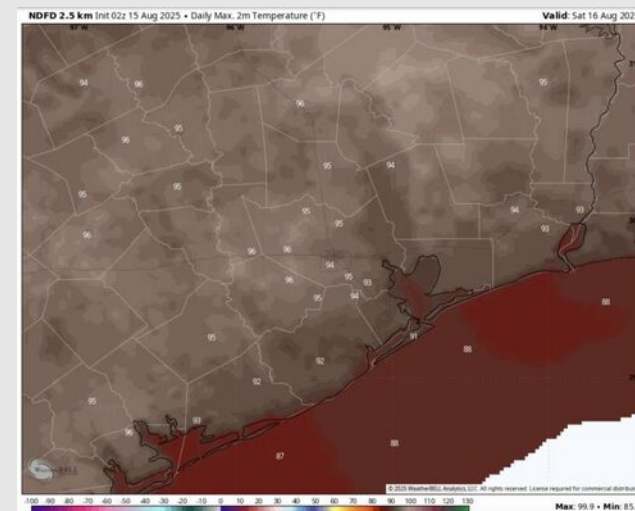
**High Temps:** **N of Morgan's Point:** Mid 90s F. **S of Morgan's Point:** Low 90s F.

**Visibility:** No fog concerns Saturday, however, visibilities may be reduced under heavier downpours.

## Precip Image: 6 PM CT



Wind Speed:  
5 PM CT



High Temps  
Saturday



# Houston Pilots: SUN. 8/17/2025

## Forecast Discussion

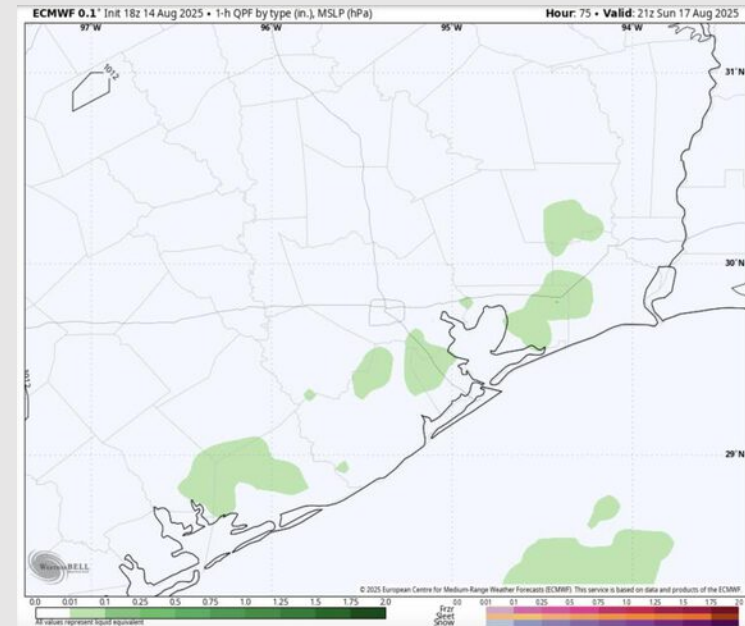
**Precip:** Isolated showers/storms will be possible from 1PM – 6PM Sunday.

**Wind:** Winds will be out of the SE Sunday. **N of Morgan's Point:** Winds will be at 2 – 7 kts. **S of Morgan's Point:** Winds will be at 5 – 10 kts.

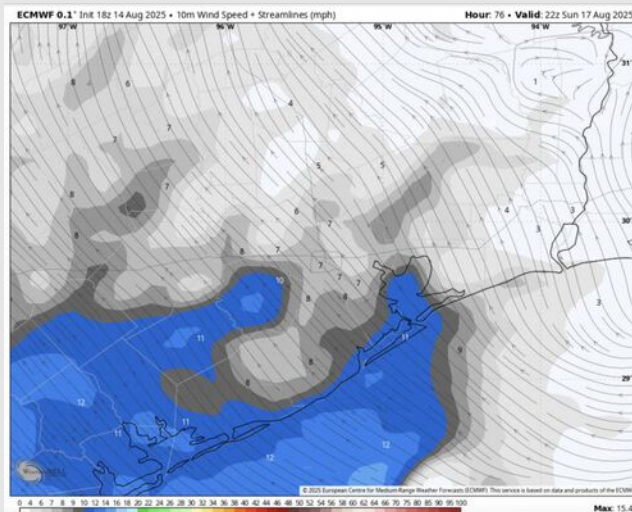
**High Temps:** **N of Morgan's Point:** Mid 90s F. **S of Morgan's Point:** Low 90s F.

**Visibility:** No visibility concerns Sunday.

## Precip Image: 6 PM CT



**Wind Speed:**  
5 PM CT



**High Temps**  
**Sunday**

