

# Houston Pilots Forecast Package



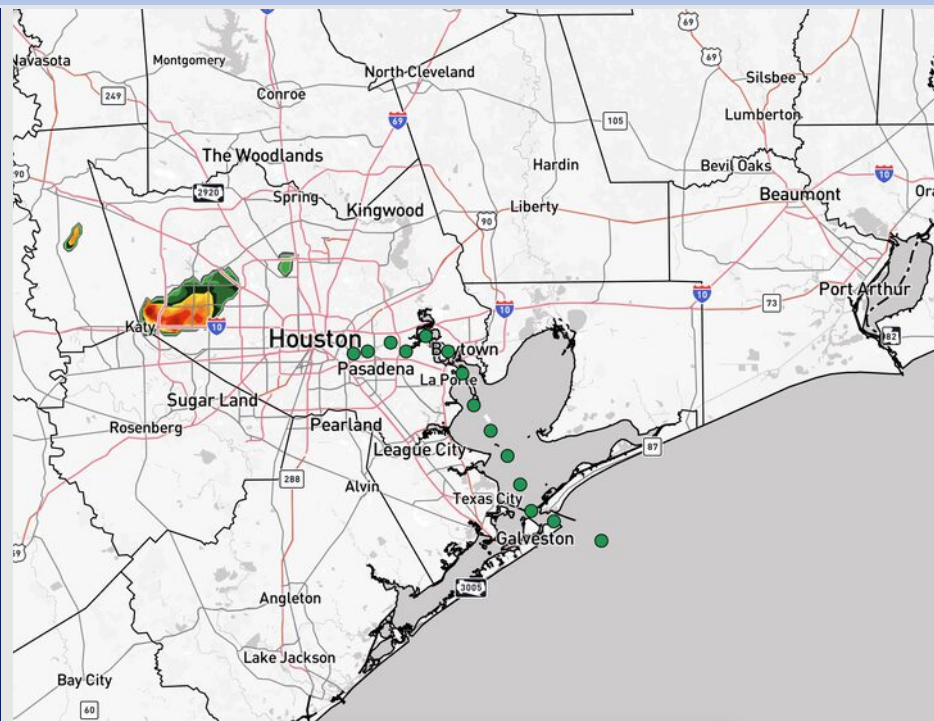
Updated: 9:55 PM CT

Wednesday, August 13, 2025

Forecaster: Sam Lang

## Weather Headlines

- Additional shower and storm chances in play over the next 72 hours.
- Monitoring tropical development in the Gulf, however, impacts to Houston are not favored over the next 10 days. Tropical Storm Erin is favored to stay out in the Atlantic. We'll need to monitor for more tropical development getting into late August.



Current Radar: 9:55 PM CT

As always, please do not hesitate to reach out to us with any forecast questions at **(317)-560-8122**. Press 1 for forecast questions.

You can also access real-time forecast updates and 24/7 meteorological chat assistance on your **Clarity** app. Click [here](#) for login assistance.



# Houston Pilots Tropical Update

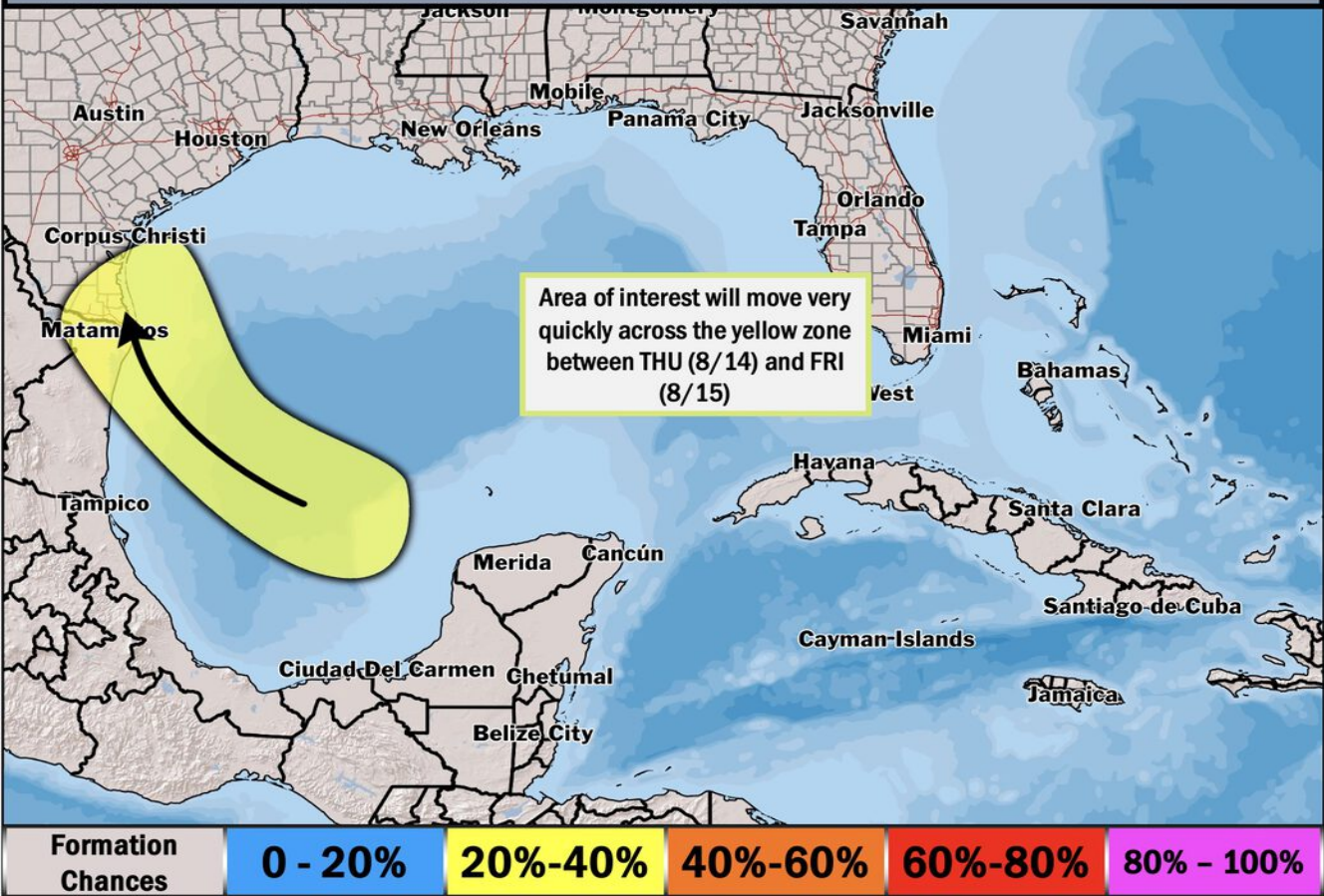


## Tropical Development Update

### Tropical Update

Formation Possible THU PM – FRI PM

FORECASTER: Kemper  
UPDATED: 8/13/25 8:00 PM ET



Graphic to the left represents the latest thinking on potential development in the Gulf.

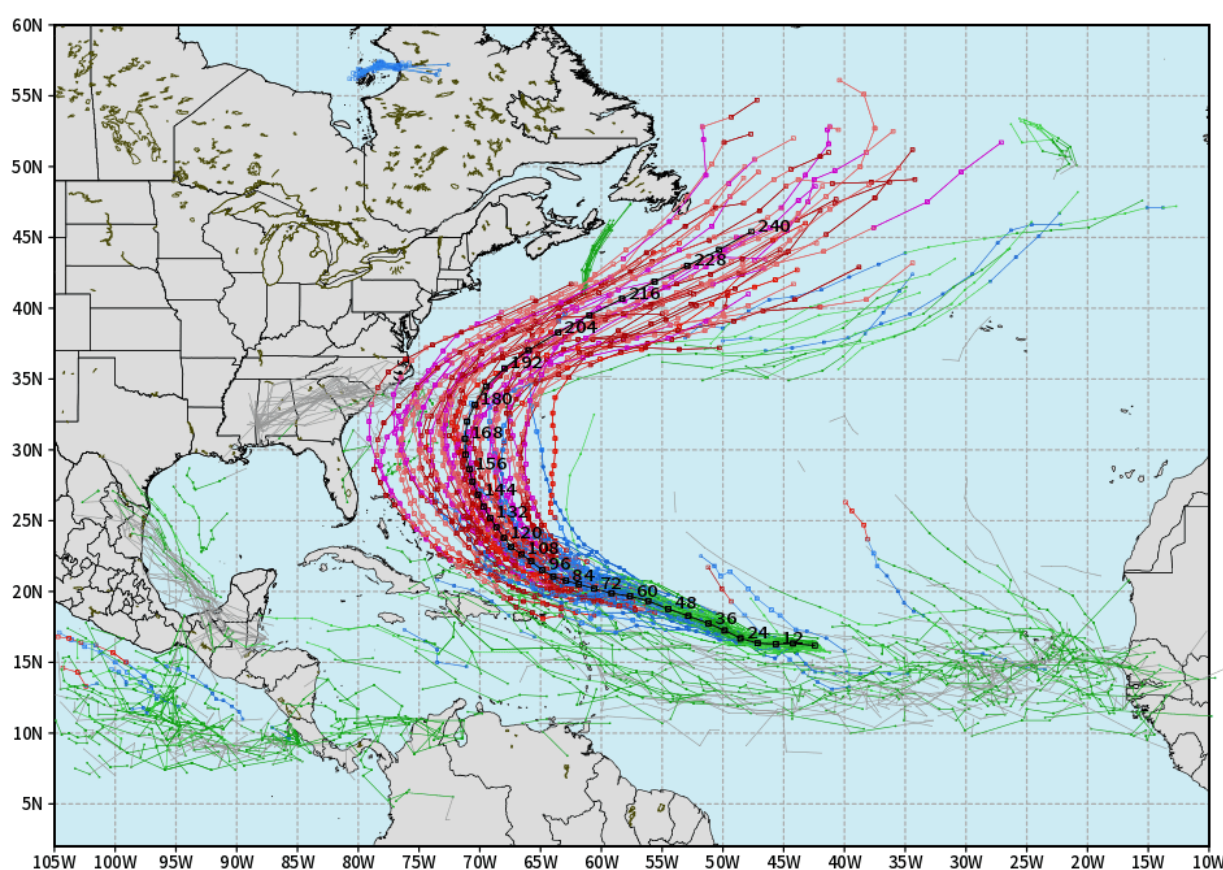
Development further into the Gulf is not favored and the system is favored to move inland by late Friday in Northeastern Mexico.

# Houston Pilots Tropical Update

## 10-Day Tropical Outlook

ECMWF ATLANTIC EPS Cyclone Locations --> Next [10-days]  
INIT: 12Z13AUG2025 --> UNTIL 12Z23AUG2025

o-o ENSEMBLE MEAN  
o-o 1000 - 1010 hPa  
o-o 980 - 999 hPa  
o-o 960 - 979 hPa  
o-o 950 - 959 hPa  
o-o < 950 hPa



[weathermodels.com](http://weathermodels.com)

No tropical development favored in the Gulf over the next 10 days.

However, we are monitoring Tropical Storm Erin in the Atlantic. Currently, we anticipate this storm to continue to turn N remaining on the E coastline.



# Houston Pilots Visibility Chart (miles)



Visibility	Wed 11 pm	Thu 12 am	Thu 1 am	Thu 2 am	Thu 3 am	Thu 4 am	Thu 5 am	Thu 6 am	Thu 7 am	Thu 8 am	Thu 9 am	Thu 10 am	Thu 11 am	Thu 12 pm	Thu 1 pm	Thu 2 pm	Thu 3 pm	Thu 4 pm	Thu 5 pm	Thu 6 pm	Thu 7 pm	Thu 8 pm	Thu 9 pm	Thu 10 pm
Houston Pilots N - 610 Bridge	10	10	10	10	10	10	10	10	10	9	10	10	10	10	10	10	10	10	10	10	10	10	10	10
Houston Pilots M - Kinder 1	10	10	10	10	10	10	10	10	10	9	10	10	10	10	10	10	10	10	10	10	10	10	10	10
Houston Pilots L - Greens Bayou	10	10	10	10	10	10	10	10	10	9	10	10	10	10	10	10	10	10	10	10	10	10	10	10
Houston Pilots K - Shell Crude	10	10	10	10	10	10	10	10	10	9	10	10	10	10	10	10	10	10	10	10	10	10	10	10
Houston Pilots J - Lynchburg Ferries	10	10	10	10	10	10	10	10	10	9	10	10	10	10	10	10	10	10	10	10	10	10	10	10
Houston Pilots I - Exxon 3	10	10	10	10	10	10	10	10	10	9	10	10	10	10	10	10	10	10	10	10	10	10	10	10
Houston Pilots H - Morgans Point	10	10	10	10	10	10	10	10	10	10	10	10	10	10	10	10	10	10	10	10	10	10	10	10
Houston Pilots G - 75/76	10	10	10	10	10	10	10	10	10	10	10	10	10	10	10	10	10	10	10	10	10	10	10	10
Houston Pilots F - 63/64	10	10	10	10	10	10	10	10	10	10	10	10	10	10	10	10	10	10	10	10	10	10	10	10
Houston Pilots E - 51/52	10	10	10	10	10	10	10	10	10	10	10	10	10	10	10	10	10	10	10	10	10	10	10	10
Houston Pilots D - 37/38	10	10	10	10	10	10	10	10	10	10	10	10	10	10	10	10	10	10	10	10	10	10	10	10
Houston Pilots C - 25/26	10	10	10	10	10	10	10	10	10	10	10	10	10	10	10	10	10	10	10	10	10	10	10	10
Houston Pilots B - 11/12	10	10	10	10	10	10	10	10	10	10	10	10	10	10	10	10	10	10	10	10	10	10	10	10
Houston Pilots A - 1 & 2 Bravo	10	10	10	10	10	10	10	10	10	10	10	10	10	10	10	10	10	10	10	10	10	10	10	10

**NOTE:** This is automated data that may/may not agree with the official BAM thinking that's found on the daily slides or special visibility report slides. This data should be used as a guide only

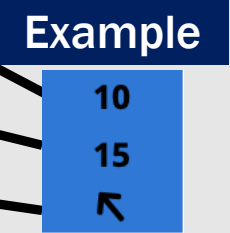
# Houston Pilots Wind Chart



## Forecast Confidence



Sustained Wind 10 Knots  
Gusts 15 Knots  
Wind from the SE



Wind	Wed 11 pm	Thu 12 am	Thu 1 am	Thu 2 am	Thu 3 am	Thu 4 am	Thu 5 am	Thu 6 am	Thu 7 am	Thu 8 am	Thu 9 am	Thu 10 am	Thu 11 am	Thu 12 pm	Thu 1 pm	Thu 2 pm	Thu 3 pm	Thu 4 pm	Thu 5 pm	Thu 6 pm	Thu 7 pm	Thu 8 pm	Thu 9 pm	Thu 10 pm
Houston Pilots N - 610 Bridge	6	5	5	5	3	3	3	3	2	2	2	3	3	5	5	5	6	6	6	7	8	8	7	7
	12	9	9	9	8	7	7	7	6	5	6	7	7	8	9	9	10	12	13	15	15	15	15	14
Houston Pilots M - Kinder 1	6	5	5	5	3	3	3	3	2	2	2	3	3	5	5	5	6	6	7	7	8	8	7	6
	12	9	9	9	8	7	7	7	5	5	6	6	7	8	9	9	12	12	13	15	15	15	15	14
Houston Pilots L - Greens Bayou	5	5	3	3	3	3	3	2	2	2	2	2	3	5	5	5	6	6	7	7	8	8	7	6
	10	9	9	9	7	7	7	6	5	5	6	6	7	8	9	9	12	12	13	15	14	15	14	14
Houston Pilots K - Shell Crude	5	5	3	3	3	3	3	2	2	2	2	2	3	3	5	5	6	6	7	8	8	8	7	6
	12	9	9	9	8	7	7	6	5	5	6	6	7	8	9	9	12	13	13	15	14	15	14	14
Houston Pilots J - Lynchburg Ferries	5	3	3	3	3	3	3	2	2	1	2	2	3	5	5	5	6	6	7	7	8	8	6	6
	10	9	8	9	7	7	7	6	5	5	5	6	7	8	9	9	12	13	13	15	14	15	14	13
Houston Pilots I - Exxon 3	9	9	8	8	8	7	7	6	6	5	5	5	6	6	6	7	8	9	10	10	12	12	12	10
	13	13	13	12	10	10	9	8	8	7	7	8	8	9	10	12	14	15	16	16	16	16	16	15
Houston Pilots H - Morgans Point	9	9	8	8	8	7	7	6	6	5	5	5	6	6	6	7	8	9	10	10	12	12	12	10
	13	13	13	12	12	10	10	9	8	8	7	8	9	9	10	12	14	15	16	16	16	16	16	15
Houston Pilots G - 75/76	10	10	10	10	9	8	8	8	7	6	6	6	6	6	6	6	8	9	10	10	12	13	13	12
	15	14	14	14	13	13	12	10	10	9	9	9	9	10	10	12	14	15	16	17	17	17	17	16
Houston Pilots F - 63/64	10	10	10	9	9	8	8	8	7	7	6	6	6	6	6	6	8	9	10	10	12	12	12	12
	15	14	14	14	13	13	12	10	10	9	9	9	9	10	10	12	14	15	16	16	17	17	17	16
Houston Pilots E - 51/52	10	10	10	10	9	9	8	8	8	7	6	6	6	6	6	6	8	9	10	10	12	13	13	12
	15	15	15	15	14	13	13	12	12	10	9	10	10	10	10	12	14	15	16	16	17	17	17	16
Houston Pilots D - 37/38	10	10	10	10	10	9	9	8	8	7	7	6	6	6	6	6	8	9	10	10	12	13	13	13
	15	15	15	15	15	14	13	12	12	10	10	10	10	10	10	12	14	15	16	16	17	17	17	17
Houston Pilots C - 25/26	10	10	10	10	9	9	9	8	8	7	7	6	6	6	6	7	8	8	10	10	10	12	12	12
	15	15	15	14	14	14	13	13	12	12	10	10	10	10	10	12	13	14	15	15	16	16	16	16
Houston Pilots B - 11/12	8	8	8	8	8	8	8	7	7	6	6	6	6	6	6	7	8	8	9	9	10	10	10	9
	14	14	15	14	14	14	14	13	13	12	10	10	10	10	10	12	13	14	15	15	16	16	16	15
Houston Pilots A - 1 & 2 Bravo	10	10	10	12	10	10	10	10	9	8	8	7	6	6	6	6	7	8	9	10	10	10	12	12
	16	16	16	16	16	16	16	15	14	14	12	12	10	10	10	10	12	14	15	15	16	16	16	16

NOTE: This is automated data that may/may not agree with the official BAM thinking that's found on the daily slides.  
This data should be used as a guide only.

# Houston Pilots: THU. 8/14/2025

## Forecast Discussion

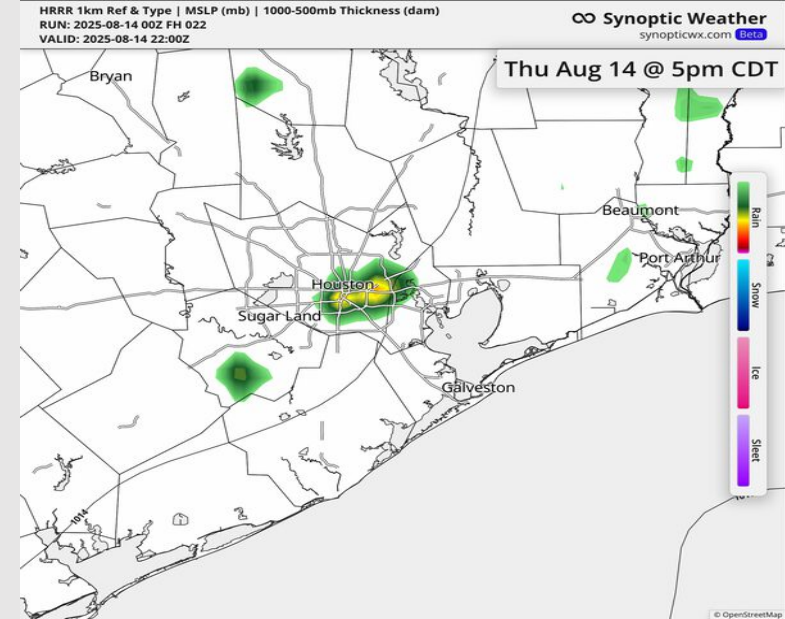
**Precip:** Isolated showers possible S of Morgan's Point from 4 AM to 1 PM, then hit/miss showers possible for all Stations through 8 PM. A few storms will be possible after 1PM. Lightning and heavy downpours will be a risk.

**Wind:** Winds will be variable before settling out of the SW by 2PM.  
**N of Morgan's Point:** Winds will be at 7 – 12 kts. **S of Morgan's Point:** Winds will be at 9– 14 kts. **A few gusts up to 20 kts will be possible for Stations S. of Morgan's Point.**

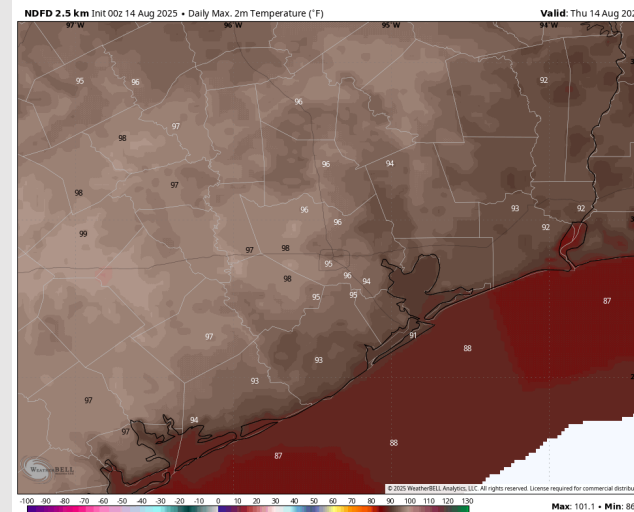
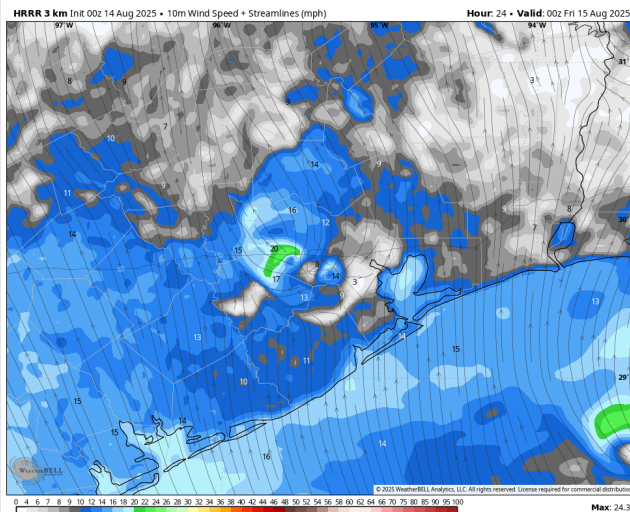
**High Temps:** **N of Morgan's Point:** Mid 90s F. **S of Morgan's Point:** Low 90s F.

**Visibility:** No visibility concerns today.

## Precip Image: 5 PM CT



Wind Speed:  
7 PM CT



High Temps  
Today

# Houston Pilots: FRI. 8/15/2025

## Forecast Discussion

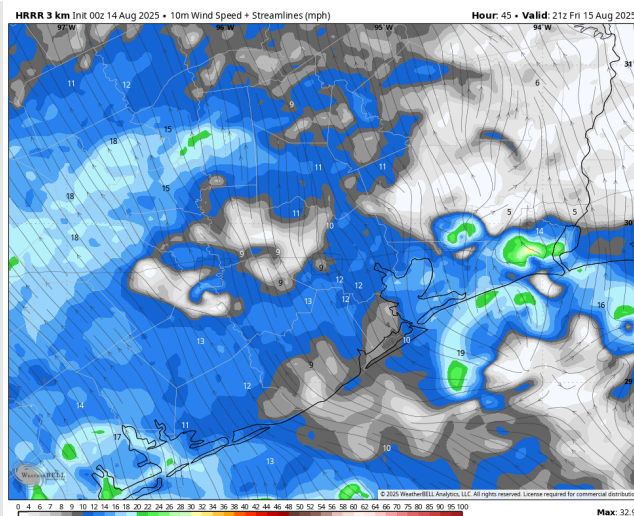
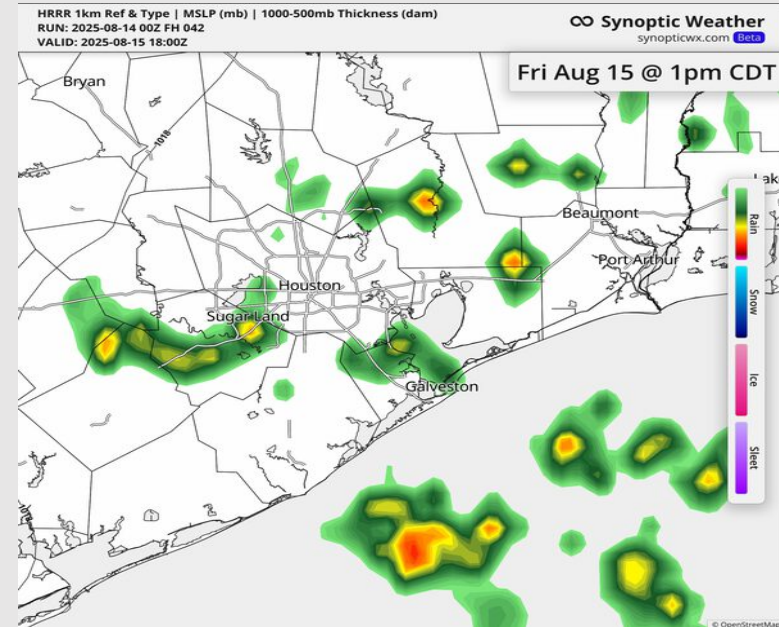
**Precip:** An isolated shower will be possible from 5AM to 9AM for Stations S. of Morgan's Point. Isolated showers/storms will be possible for all Stations from 1PM to 6PM. Lightning and wind gusts of 20 – 25 kts will be possible within storms.

**Wind:** Winds will be out of the SW before becoming variable from 12PM – 5PM. Winds will settle out of the SE after 5PM. **N of Morgan's Point:** Winds will be at 8–13 kts. **S of Morgan's Point:** Winds will be 9 – 14 kts.

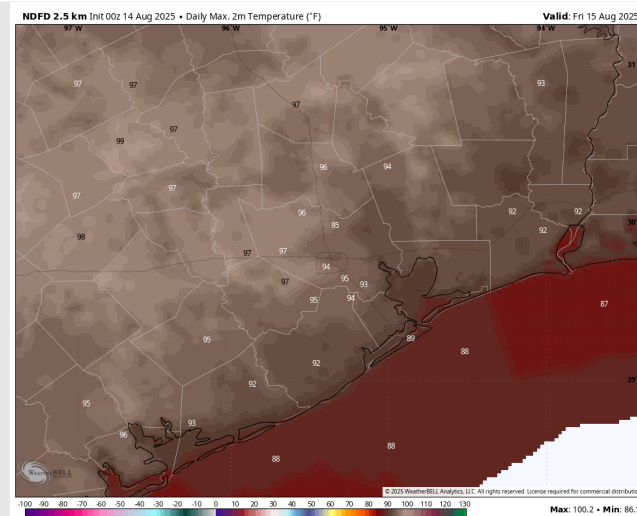
**High Temps:** **N of Morgan's Point:** Mid 90s F. **S of Morgan's Point:** High 80s F to near 90 F.

**Visibility:** No fog concerns Friday, however, visibilities may be reduced under heavier downpours.

## Precip Image: 1 PM CT



Wind Speed:  
4 PM CT



High Temps  
Friday



# Houston Pilots: SAT. 8/13/2025

## Forecast Discussion

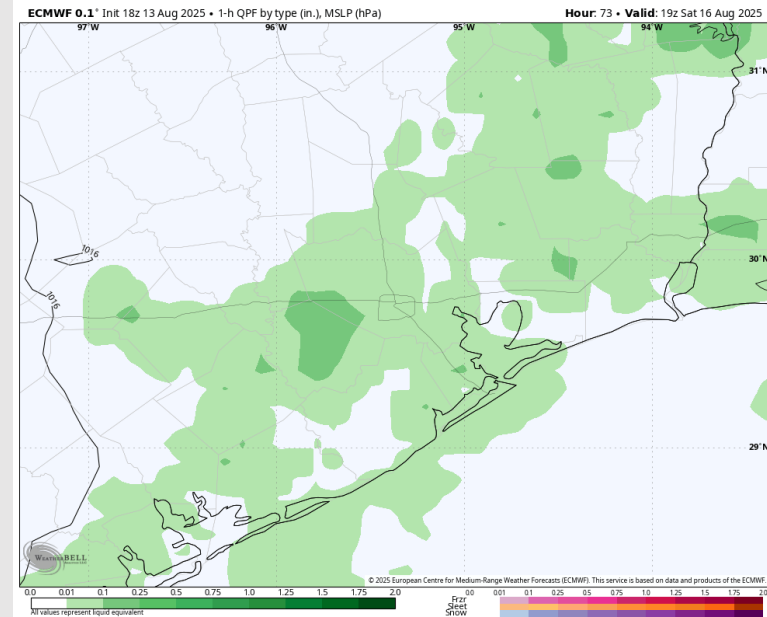
**Precip:** Scattered showers and storms will be possible for all Stations through 6PM. Lightning risks and wind gusts of 25 + kts will be possible within storms.

**Wind:** Winds will be out of the S. **N of Morgan's Point:** Winds will be at 2 – 7 kts. **S of Morgan's Point:** Winds will be at 7 – 12 kts.

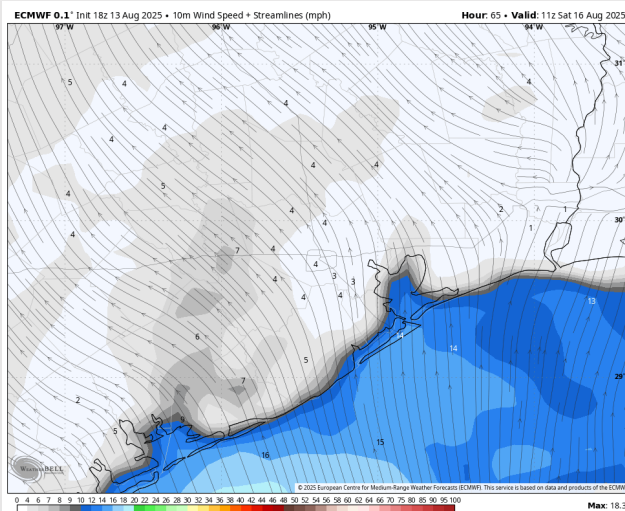
**High Temps:** **N of Morgan's Point:** Mid 90s F. **S of Morgan's Point:** High 80s F to near 90 F.

**Visibility:** No fog concerns Saturday, however, visibilities may be reduced under heavier downpours.

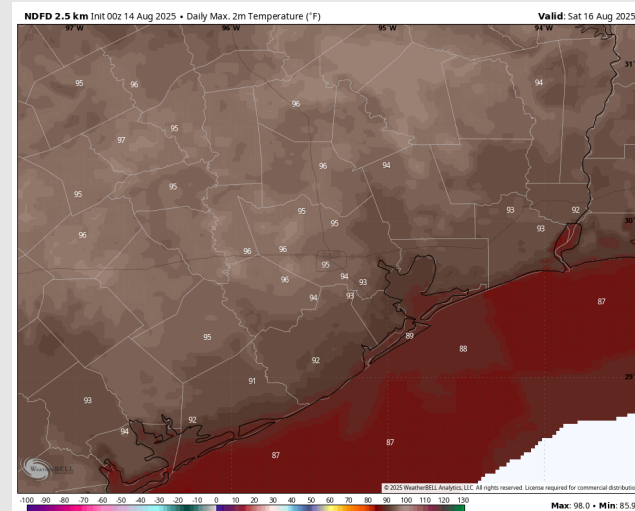
## Precip Image: 2 PM CT



**Wind Speed:**  
6 AM CT

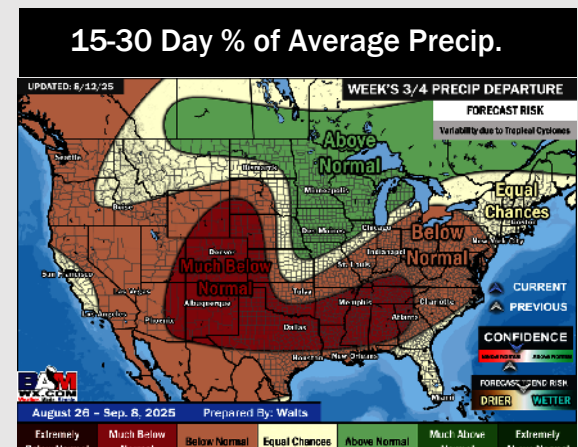
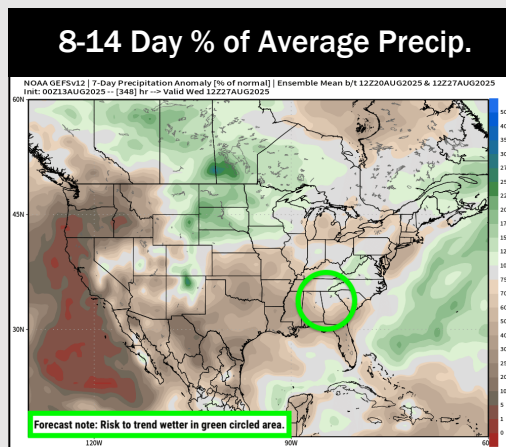
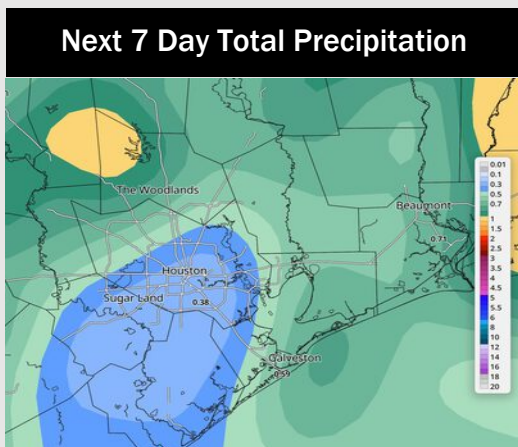
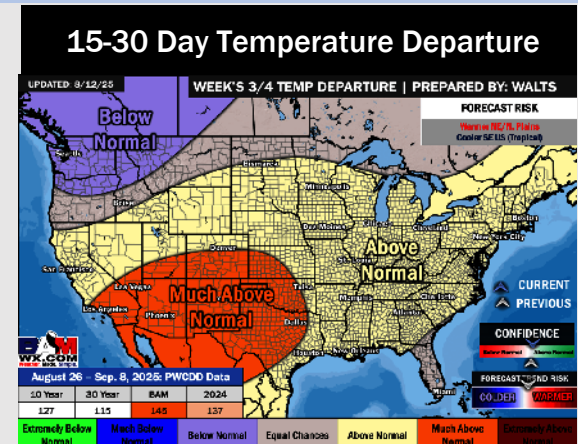
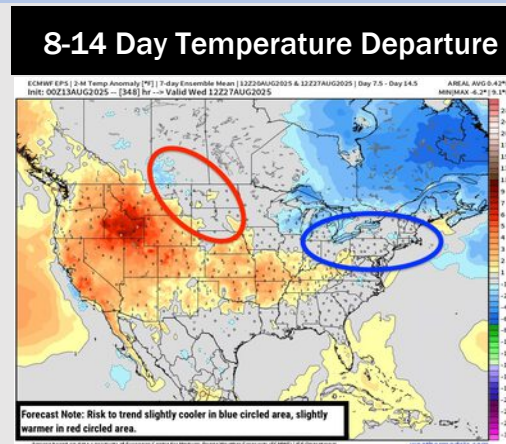
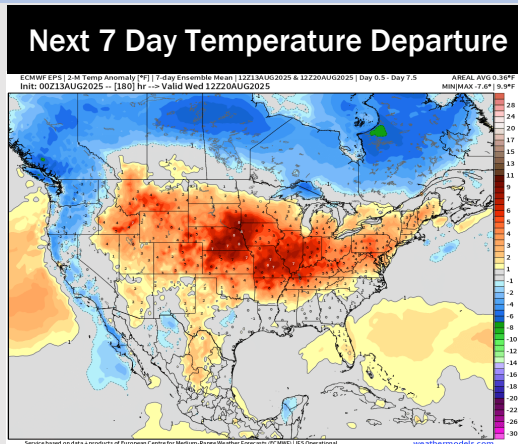


**High Temps**  
**Saturday**





# Houston Pilots: 8/14/25



- Temps are expected to be near normal for the next 7 days with scattered rain chances throughout the week.
- Near normal temperatures and below normal rain chances are favored for days 8 – 14.
- Above normal temperatures are favored for the end of August/early September with below normal rainfall chances.