

Houston Pilots Forecast Package



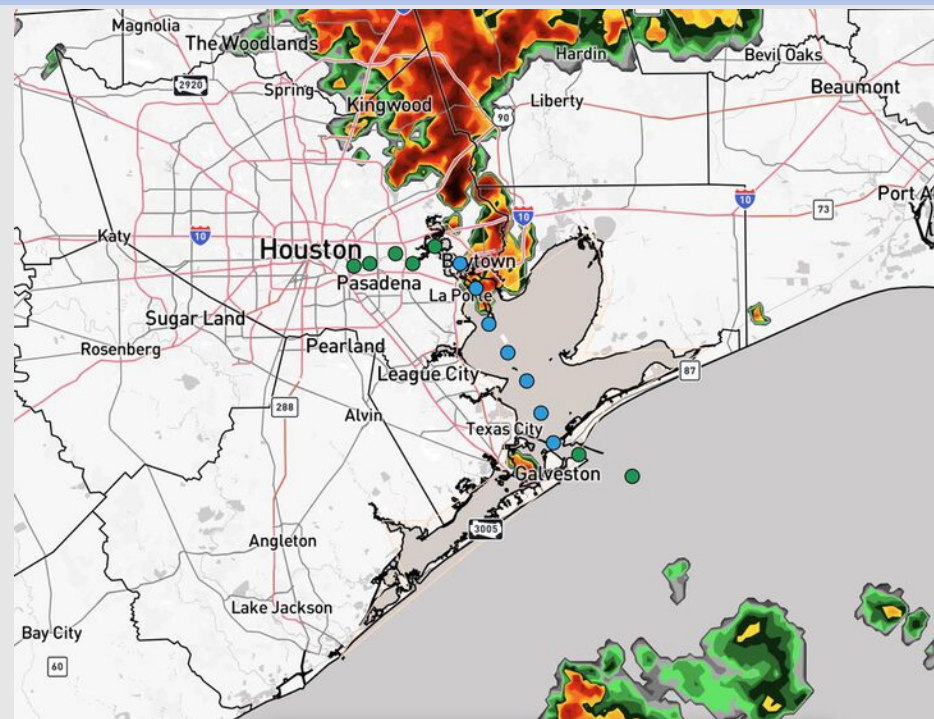
Updated: 11:50 AM CT

Saturday, August 2, 2025

Forecaster: Jonathan Kipper

Weather Headlines

- Scattered storms will be possible the rest of today and into early next week.
- Isolated gusts of 30+ kts will be possible through ~10 PM today under the strongest storms.
- No tropical development favored over the next 10 days.



Current Radar: 11:45 AM CT

As always, please do not hesitate to reach out to us with any forecast questions at (317)-560-8122. Press 1 for forecast questions.

You can also access real-time forecast updates and 24/7 meteorological chat assistance on your [Clarity](#) app. Click [here](#) for login assistance.

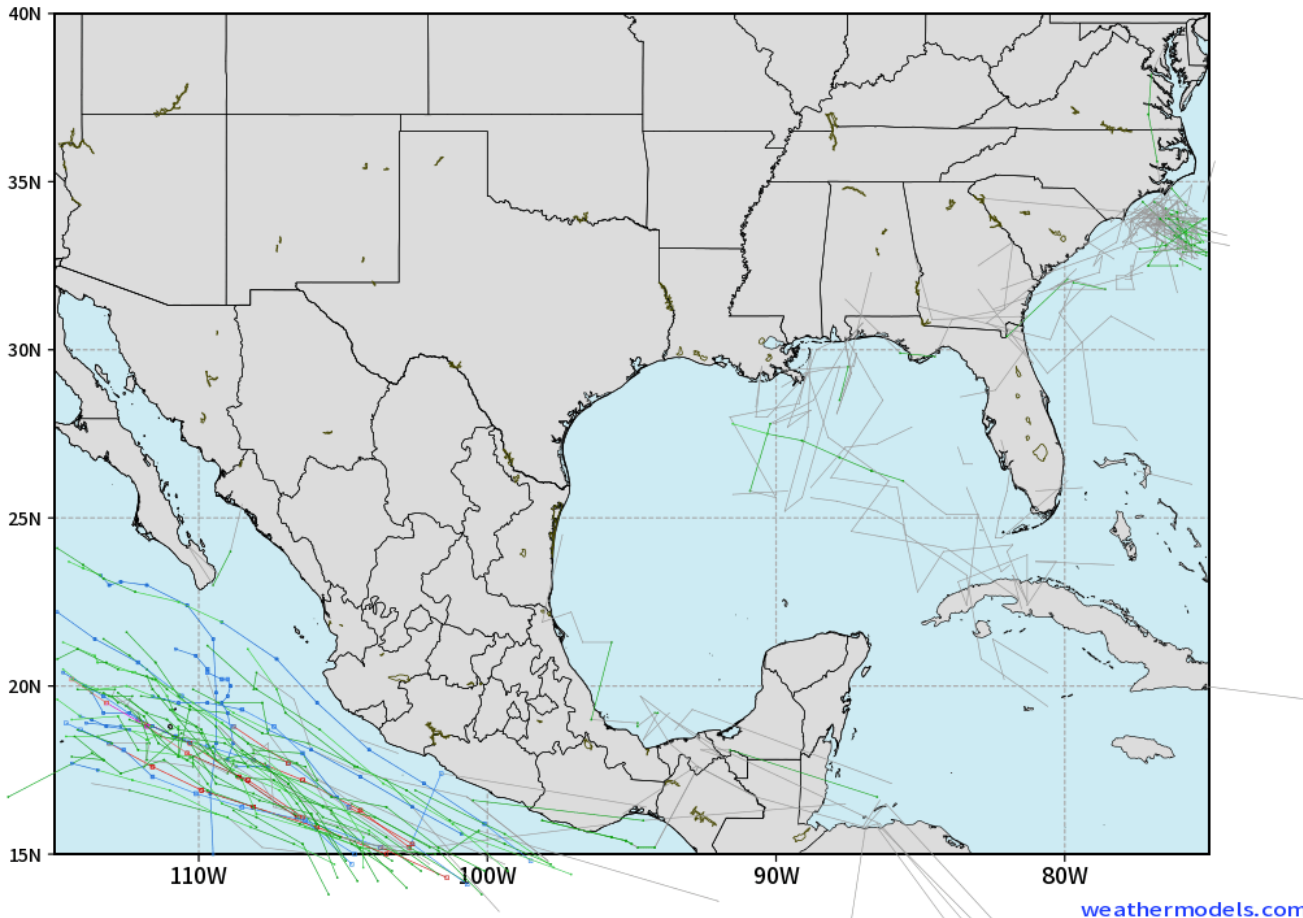


Houston Pilots Tropical Update

10-Day Tropical Outlook

ECMWF GULF EPS Cyclone Locations --> Next [10-days]
INIT: 00Z02AUG2025 --> UNTIL 00Z12AUG2025

o-o ENSEMBLE MEAN
o-o 1000 - 1010 hPa
o-o 980 - 999 hPa
o-o 960 - 979 hPa
o-o 950 - 959 hPa
o-o < 950 hPa



No tropical development favored over the next 10 days.

Houston Pilots Visibility Chart (miles)



Visibility	Sat 1 pm	Sat 2 pm	Sat 3 pm	Sat 4 pm	Sat 5 pm	Sat 6 pm	Sat 7 pm	Sat 8 pm	Sat 9 pm	Sat 10 pm	Sat 11 pm	Sun 12 am	Sun 1 am	Sun 2 am	Sun 3 am	Sun 4 am	Sun 5 am	Sun 6 am	Sun 7 am	Sun 8 am	Sun 9 am	Sun 10 am	Sun 11 am	Sun 12 pm
Houston Pilots N - 610 Bridge	10	10	10	10	10	10	10	10	10	10	6.9	10	10	10	10	10	10	10	10	10	10	10	10	10
Houston Pilots M - Kinder 1	10	10	10	10	10	10	10	10	10	10	6.9	10	10	10	10	10	10	10	10	10	10	10	10	10
Houston Pilots L - Greens Bayou	10	10	10	10	10	10	10	10	10	10	10	10	10	10	10	10	10	10	10	10	10	10	10	10
Houston Pilots K - Shell Crude	10	10	10	10	10	10	10	10	10	10	10	10	10	10	10	10	10	10	10	10	10	10	10	10
Houston Pilots J - Lynchburg Ferries	10	10	10	10	10	10	10	10	10	10	10	10	10	10	10	10	10	10	10	10	10	10	10	10
Houston Pilots I - Exxon 3	10	10	10	10	10	10	10	10	10	10	10	10	10	10	10	10	10	10	10	10	10	10	10	10
Houston Pilots H - Morgans Point	10	10	10	10	10	10	10	10	10	10	10	10	10	10	10	10	10	10	10	10	10	10	10	10
Houston Pilots G - 75/76	10	10	10	10	10	10	10	10	10	10	10	10	10	10	10	10	10	10	10	10	10	10	10	9
Houston Pilots F - 63/64	10	10	10	10	10	10	10	10	10	10	10	10	10	10	10	10	10	10	10	10	10	10	10	9
Houston Pilots E - 51/52	10	10	10	10	10	10	10	10	10	10	10	10	10	10	10	10	10	10	10	10	10	10	10	9
Houston Pilots D - 37/38	10	10	10	10	10	10	10	10	10	10	10	10	10	10	10	10	10	10	10	10	10	10	10	9
Houston Pilots C - 25/26	10	10	10	10	10	10	10	10	10	10	10	10	10	10	10	10	10	10	10	10	10	10	10	9
Houston Pilots B - 11/12	10	10	10	10	10	10	10	10	10	10	10	10	10	10	10	10	10	10	10	10	10	10	10	9
Houston Pilots A - 1 & 2 Bravo	10	10	10	10	10	10	10	10	10	10	10	10	10	10	10	10	10	10	10	10	10	10	10	9

NOTE: This is automated data that may/may not agree with the official BAM thinking that's found on the daily slides or special visibility report slides. This data should be used as a guide only

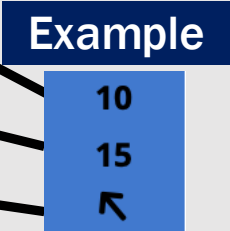
Houston Pilots Wind Chart



Forecast Confidence



Sustained Wind 10 Knots
Gusts 15 Knots
Wind from the SE



Wind	Sat 1 pm	Sat 2 pm	Sat 3 pm	Sat 4 pm	Sat 5 pm	Sat 6 pm	Sat 7 pm	Sat 8 pm	Sat 9 pm	Sat 10 pm	Sat 11 pm	Sun 12 am	Sun 1 am	Sun 2 am	Sun 3 am	Sun 4 am	Sun 5 am	Sun 6 am	Sun 7 am	Sun 8 am	Sun 9 am	Sun 10 am	Sun 11 am	Sun 12 pm
Houston Pilots N - 610 Bridge	3 9 ↓	3 9 ↓	3 9 ↓	3 9 ↓	3 8 ↓	3 8 ↖	3 8 ↖	3 8 ↖	3 7 ↗	2 6 ↑	2 6 ↗	1 5 ↗	1 5 →	1 5 ↘	1 5 ↘	1 5 ↘	2 6 ↓	2 6 ↓	2 6 ↓	3 7 ↓	2 6 ↓	2 6 ↓	3 7 ↓	3 7 ↓
Houston Pilots M - Kinder 1	5 9 ↓	3 9 ↓	3 9 ↓	3 9 ↓	3 8 ↓	3 8 ↖	3 8 ↖	3 8 ↖	3 7 ↗	2 6 ↑	2 6 ↗	1 5 ↗	1 5 →	1 5 ↘	1 5 ↘	1 5 ↘	2 6 ↓	2 6 ↓	2 6 ↓	3 7 ↓	2 6 ↓	2 6 ↓	3 7 ↓	3 7 ↓
Houston Pilots L - Greens Bayou	3 9 ↓	3 9 ↓	3 9 ↓	3 9 ↓	3 8 ↓	3 8 ↖	3 7 ↖	3 7 ↖	3 7 ↖	2 6 ↑	2 6 ↗	1 5 ↗	1 5 →	1 3 ↘	1 3 ↘	1 5 ↘	2 5 ↓	2 5 ↓	2 6 ↓	2 6 ↓	2 6 ↓	3 7 ↓	3 7 ↓	3 7 ↓
Houston Pilots K - Shell Crude	3 9 ↓	3 9 ↓	3 9 ↓	3 9 ↓	3 8 ↓	3 8 ↖	3 7 ↖	3 8 ↖	2 7 ↗	2 6 ↑	2 6 ↗	1 5 ↗	1 5 →	1 3 ↘	1 3 ↘	1 5 ↘	2 5 ↓	2 5 ↓	2 6 ↓	2 6 ↓	2 6 ↓	3 7 ↓	3 7 ↓	3 7 ↓
Houston Pilots J - Lynchburg Ferries	3 9 ↓	3 9 ↓	3 9 ↓	3 9 ↓	3 8 ↓	3 8 ↖	3 7 ↖	3 8 ↖	2 7 ↗	2 6 ↑	1 6 ↗	1 5 ↗	1 3 →	1 3 ↘	1 3 ↘	1 3 ↘	1 5 ↓	1 5 ↓	2 5 ↓	2 6 ↓	2 5 ↓	2 5 ↓	3 7 ↓	3 7 ↓
Houston Pilots I - Exxon 3	6 9 ↓	6 12 ↓	6 10 ↓	6 10 ↓	6 10 ↖	6 9 ↖	6 9 ↖	6 10 ↖	6 9 ↗	6 9 ↗	6 8 ↗	5 7 ↗	5 7 →	5 7 ↘	3 7 ↘	5 7 ↘	5 7 ↓	5 7 ↓	6 7 ↓	6 8 ↓	6 8 ↓	5 7 ↓	6 8 ↓	5 7 ↓
Houston Pilots H - Morgans Point	6 9 ↓	6 10 ↓	6 10 ↓	6 10 ↓	6 10 ↖	6 9 ↖	6 9 ↖	6 10 ↖	6 9 ↗	6 8 ↗	6 8 ↗	5 7 ↗	5 7 →	3 7 ↘	3 7 ↘	5 7 ↘	5 7 ↓	5 7 ↓	6 7 ↓	6 8 ↓	6 8 ↓	5 7 ↓	6 8 ↓	5 7 ↓
Houston Pilots G - 75/76	5 9 ↓	5 10 ↓	5 9 ↓	5 9 ↖	6 10 ↖	6 9 ↖	6 9 ↖	6 10 ↖	6 9 ↗	6 9 ↗	6 9 ↗	6 7 ↗	6 7 →	6 7 ↘	6 7 ↘	6 7 ↘	6 7 ↓	6 8 ↓	6 8 ↓	6 8 ↓	6 9 ↓	6 9 ↓	6 9 ↓	5 9 ↓
Houston Pilots F - 63/64	5 9 ↓	5 9 ↓	3 9 ↓	5 9 ↖	5 9 ↖	6 9 ↖	6 9 ↖	6 10 ↖	6 9 ↗	6 9 ↗	6 9 ↗	6 8 ↗	6 7 →	6 7 ↘	6 7 ↘	6 7 ↘	6 8 ↓	6 8 ↓	6 8 ↓	6 8 ↓	6 9 ↓	6 9 ↓	6 9 ↓	5 9 ↓
Houston Pilots E - 51/52	5 9 ↓	5 10 ↓	3 9 ↓	3 9 ↓	5 9 ↖	6 9 ↖	6 10 ↖	6 12 ↖	6 9 ↖	6 9 ↖	6 9 ↖	6 8 ↖	6 8 →	6 7 ↘	6 7 ↘	6 7 ↘	6 8 ↓	6 8 ↓	6 8 ↓	6 8 ↓	6 9 ↓	6 9 ↓	6 9 ↓	5 9 ↓
Houston Pilots D - 37/38	6 9 ↓	5 9 ↓	3 9 ↓	3 8 ↓	3 9 ↖	6 9 ↖	6 10 ↖	6 12 ↖	6 10 ↖	6 9 ↖	6 9 ↖	6 8 ↖	6 8 →	6 7 ↘	6 7 ↘	6 7 ↘	6 8 ↓	6 8 ↓	6 8 ↓	6 8 ↓	6 9 ↓	6 9 ↓	6 9 ↓	6 9 ↓
Houston Pilots C - 25/26	6 9 ↓	5 9 ↓	3 8 ↓	3 8 ↓	3 9 ↖	5 9 ↖	6 9 ↖	6 10 ↖	6 9 ↖	6 9 ↖	6 9 ↖	6 8 ↖	6 8 →	5 7 ↘	5 7 ↘	5 7 ↘	6 8 ↓	6 8 ↓	6 8 ↓	6 8 ↓	6 9 ↓	6 9 ↓	6 9 ↓	6 9 ↓
Houston Pilots B - 11/12	6 9 ↓	5 10 ↓	5 8 ↓	3 9 ↓	5 9 ↖	5 9 ↖	6 9 ↖	6 10 ↖	6 10 ↖	6 9 ↖	6 9 ↖	5 8 ↖	5 8 →	3 7 ↘	3 7 ↘	3 7 ↘	5 8 ↓	5 8 ↓	5 8 ↓	6 8 ↓	6 9 ↓	6 9 ↓	6 9 ↓	6 9 ↓
Houston Pilots A - 1 & 2 Bravo	6 10 ↓	5 9 ↓	3 9 ↓	3 9 ↓	5 9 ↖	6 10 ↖	6 10 ↖	6 12 ↖	6 10 ↖	6 9 ↖	6 9 ↖	6 9 ↖	6 8 ↖	6 8 →	6 8 ↘	6 8 ↘	6 8 ↓	6 9 ↓	6 9 ↓	7 10 ↓	7 10 ↓	6 10 ↓	6 10 ↓	6 10 ↓

NOTE: This is automated data that may/may not agree with the official BAM thinking that's found on the daily slides.
This data should be used as a guide only.

Houston Pilots: SAT. 8/2/2025

Forecast Discussion

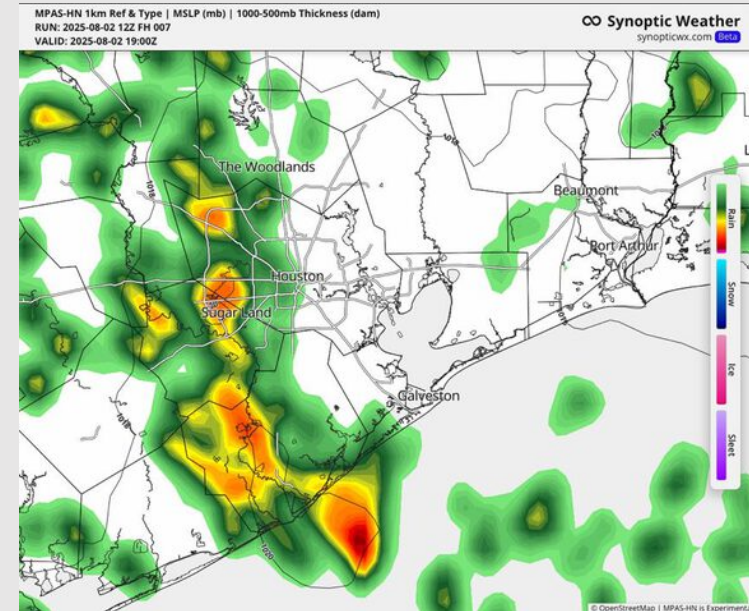
Precip: Scattered/persistent showers/storms possible for all stations through today, becoming more isolated through 10 PM before dry conditions favored. **Some storms may carry risks of lightning, heavy downpours, and wind gusts of 30 - 40 kts.**

Wind: Winds will be from the NW through 1 PM, then will be variable the rest of the day. **N of Morgan's Point:** Winds will be at 5 - 10 kts. **S of Morgan's Point:** Winds will be at 8 - 13 kts.

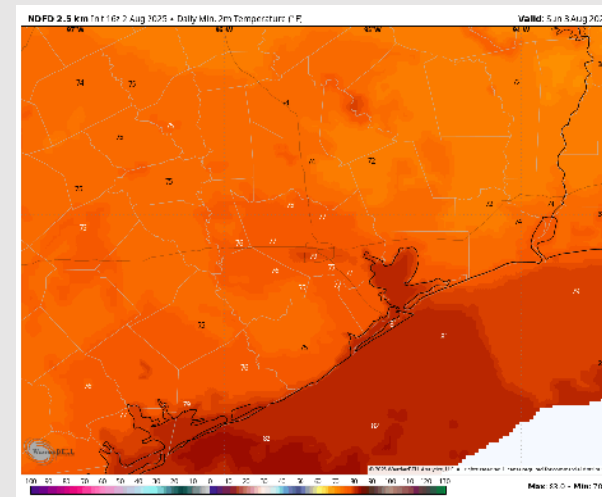
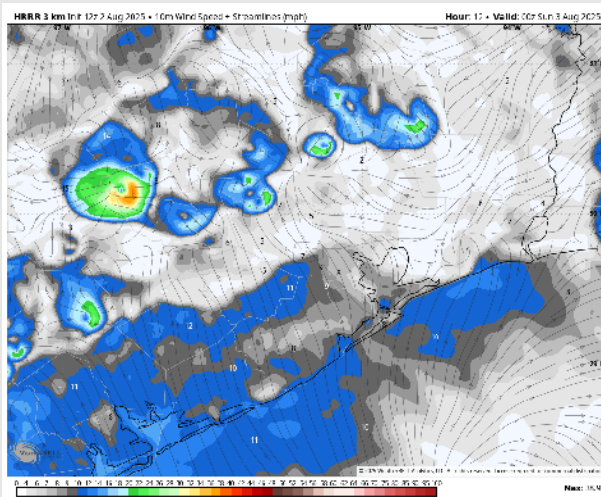
Low Temps: **N of Morgan's Point:** Upper 70s F. **S of Morgan's Point:** Low 80s F.

Visibility: No fog concerns today, however, visibilities may be reduced under heavier downpours.

Precip Image: 2 PM CT



Wind Speed:
7 PM CT



Low Temps
SUN AM

Houston Pilots: SUN. 8/3/2025

Forecast Discussion

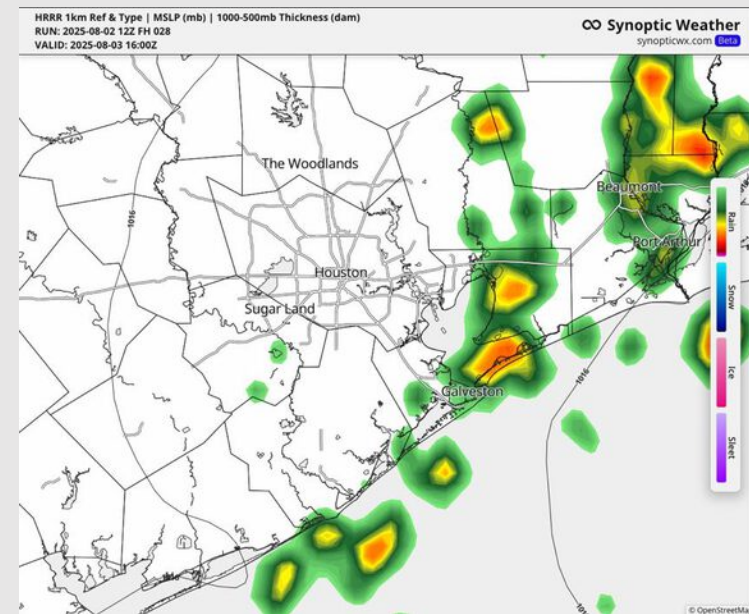
Precip: Scattered showers and storms possible 6 AM through 6 PM SUN. **Some storms may have wind gusts of 25+ kts and heavier downpours, mainly after 2 PM.**

Wind: Winds will be variable throughout the day Sunday. **N of Morgan's Point:** Winds will be at 2 – 6 kts. **S of Morgan's Point:** Winds will be 4 – 9 kts.

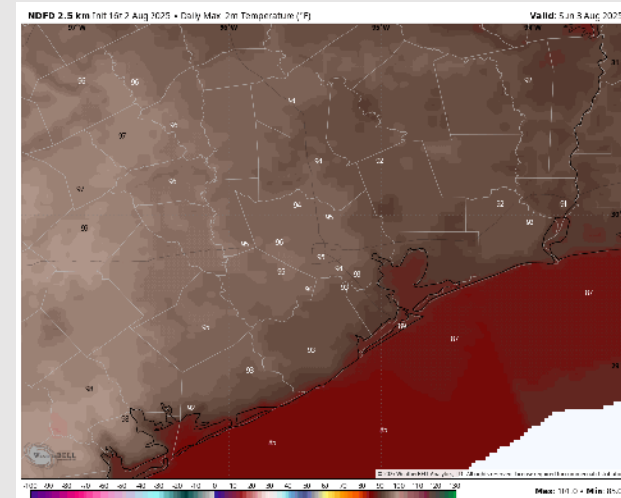
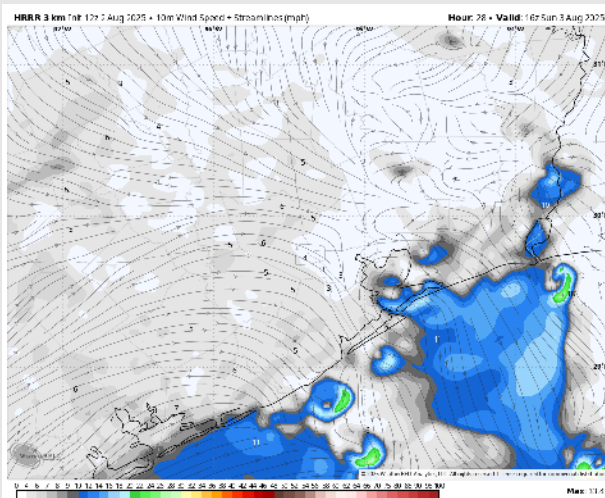
High Temps: **N of Morgan's Point:** Mid 90s F. **S of Morgan's Point:** Upper 80s/Low 90s F.

Visibility: No fog concerns Sunday, however, visibilities may be reduced under heavier downpours.

Precip Image: 11 AM CT



Wind Speed:
11 AM CT



High Temps
Sunday

Houston Pilots: MON. 8/4/2025

Forecast Discussion

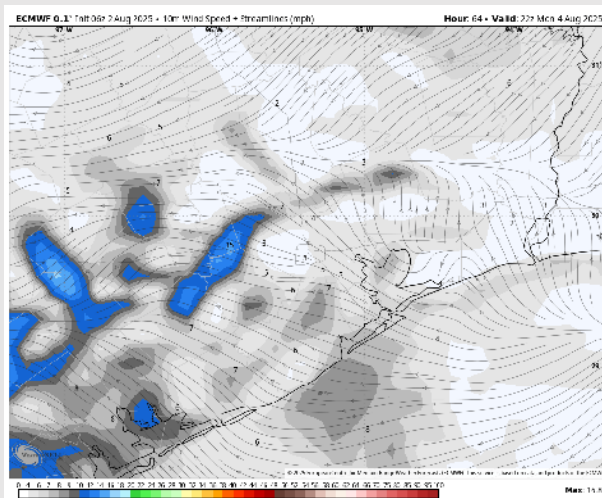
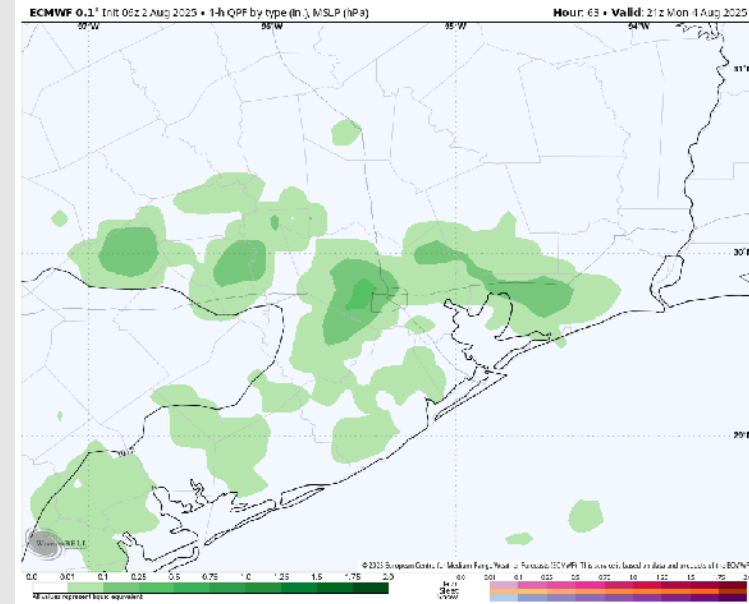
Precip: Scattered showers/a few storms will be possible from 7 AM to 3 PM at all stations, with coverage shifting to stations N of Morgan's Point from 3-7 PM. Dry conditions favored after 7 PM.

Wind: Winds will be variable through ~2 PM MON before settling out of the SE. **N of Morgan's Point:** Winds will be at 2 – 6 kts. **S of Morgan's Point:** Winds will be at 3 – 7 kts.

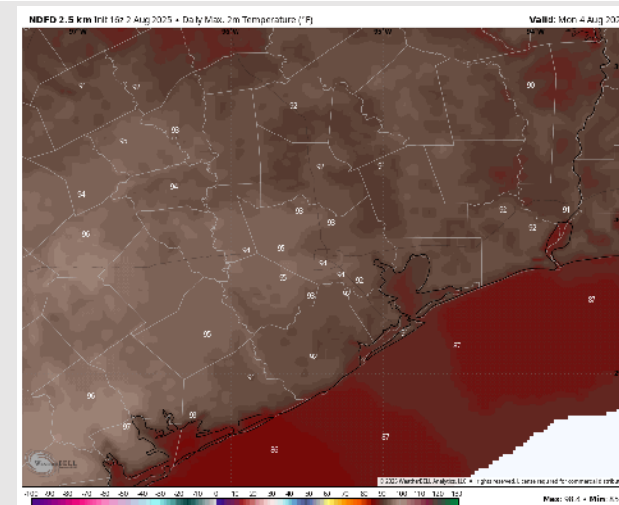
High Temps: **N of Morgan's Point:** Low/Mid 90s F. **S of Morgan's Point:** Upper 80s/Low 90s F.

Visibility: No fog concerns Monday, however, visibilities may be reduced under heavier downpours.

Precip Image: 2 PM CT



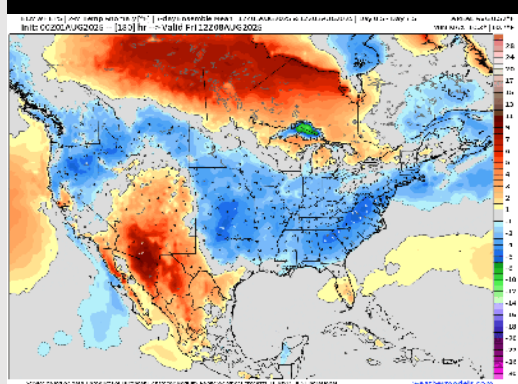
Wind Speed:
5 PM CT



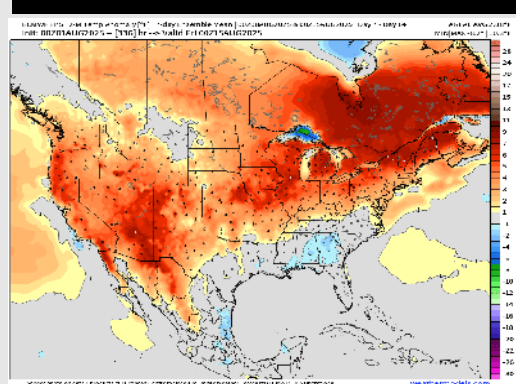
High Temps
Monday

Houston Pilots: 8/2/25

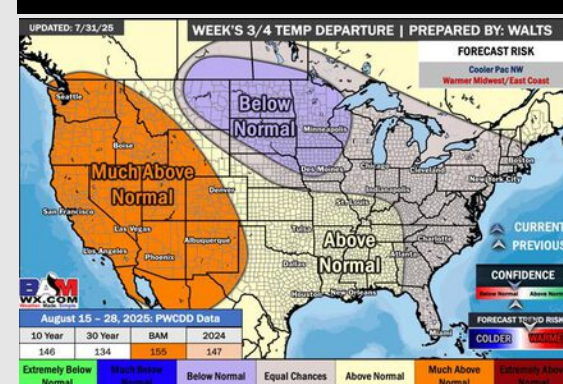
Next 7 Day Temperature Departure



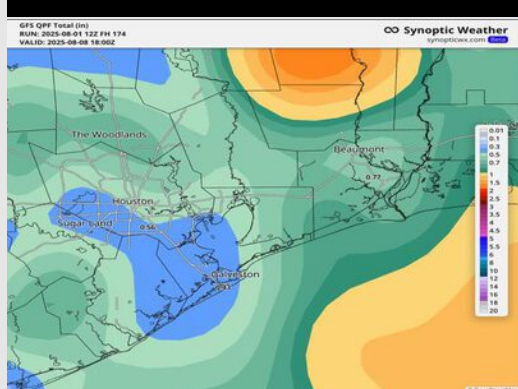
8-14 Day Temperature Departure



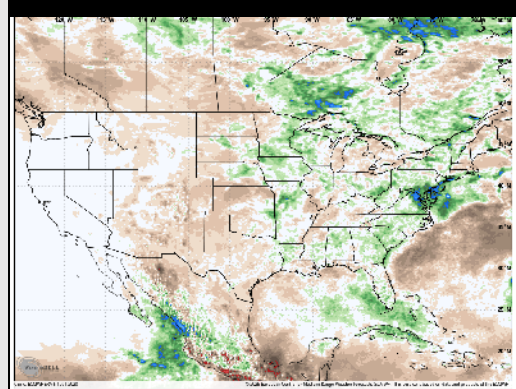
15-30 Day Temperature Departure



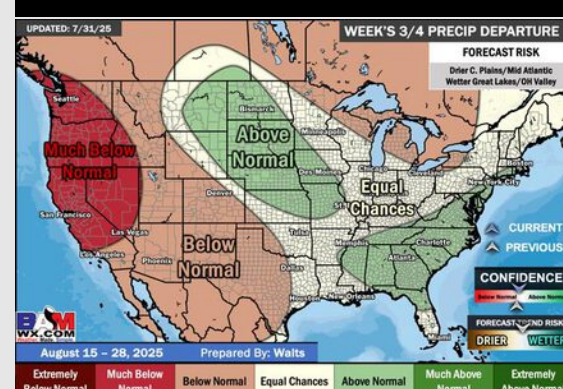
Next 7 Day Total Precipitation



8-14 Day % of Average Precip.



15-30 Day % of Average Precip.



- Temps are expected to be near normal for the next 7 days with scattered rain chances into early/mid next week.
- Near normal temps and below normal rain chances are favored for days 8 – 14.
- Above normal temperatures are favored for the start of August along with near normal rainfall chances.