

Houston Pilots Forecast Package



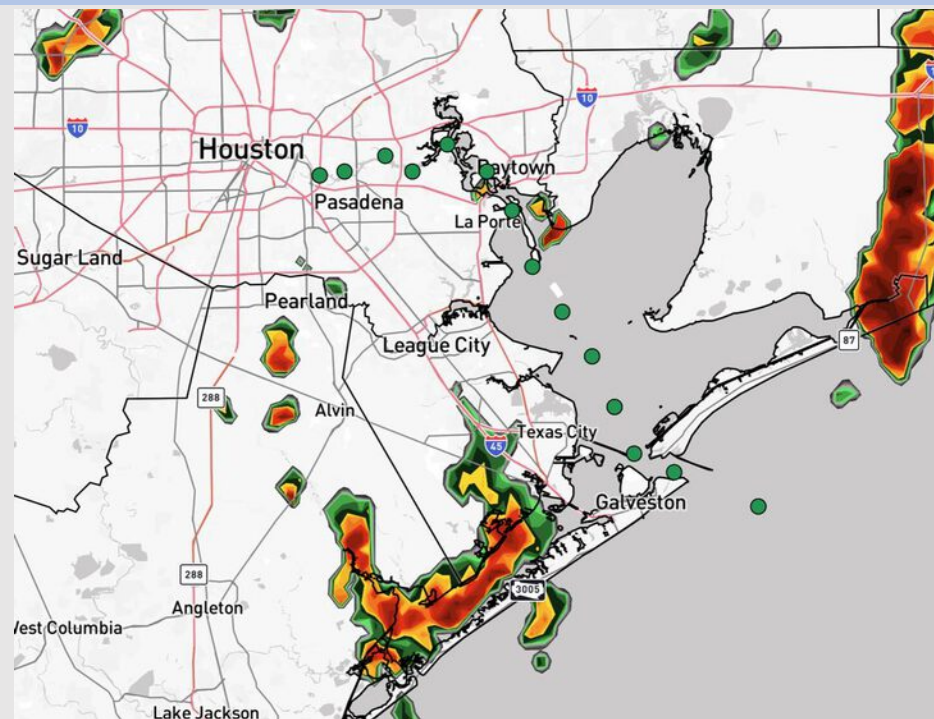
Updated: 1:20 PM CT

Tuesday, August 12, 2025

Forecaster: Hope Kleitsch

Weather Headlines

- Additional shower and storm chances in play over the next 72 hours.
- No tropical development favored in the Gulf over the next 10 days. Tropical activity will likely develop in the Atlantic Mid August however not anticipating impacts to the Gulf.



Current Radar: 1:20 PM CT

As always, please do not hesitate to reach out to us with any forecast questions at [\(317\)-560-8122](tel:317-560-8122). Press 1 for forecast questions.

You can also access real-time forecast updates and 24/7 meteorological chat assistance on your [Clarity](#) app. Click [here](#) for login assistance.



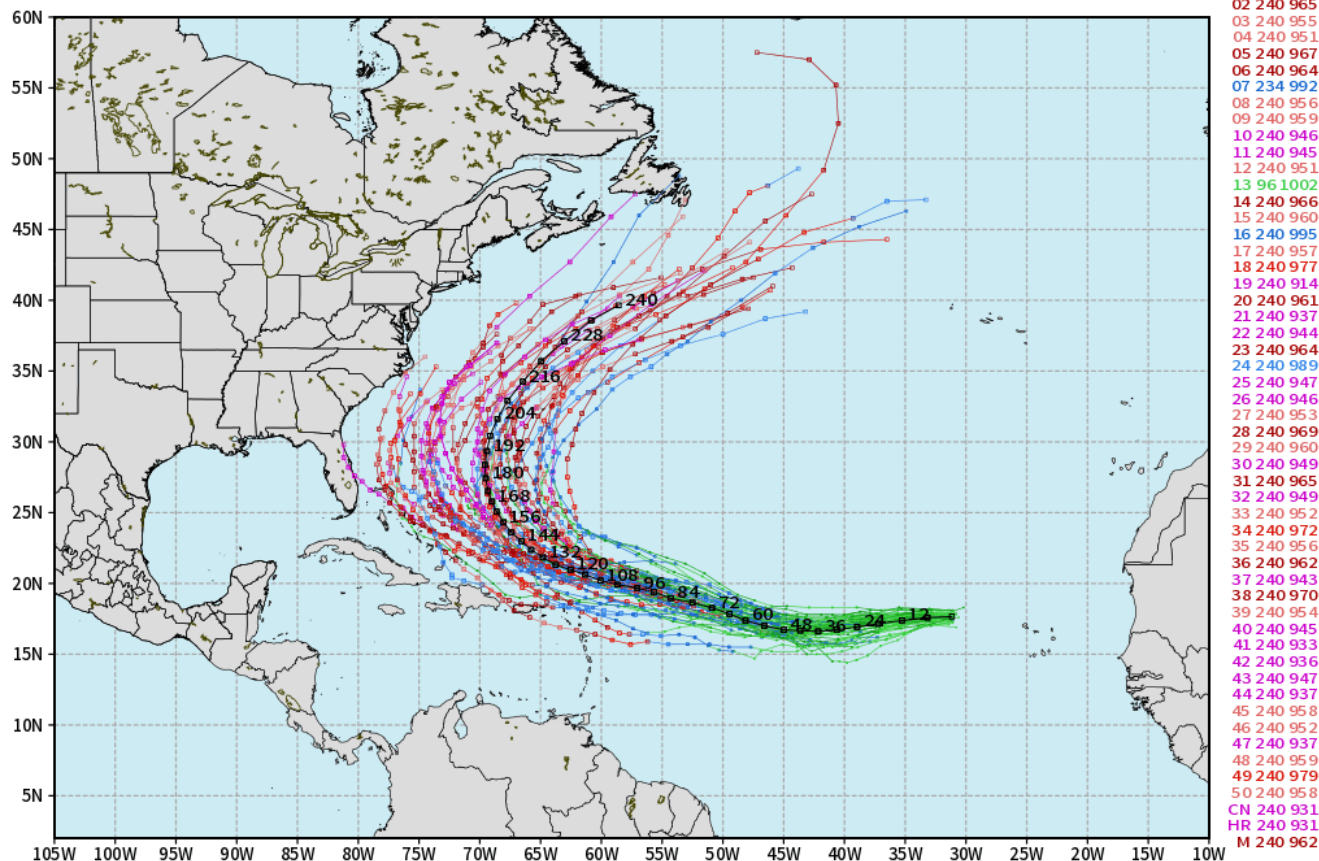
Houston Pilots Tropical Update

10-Day Tropical Outlook

ECMWF ERIN EPS Cyclone Locations --> Next [10-days]
INIT: 00Z12AUG2025 --> UNTIL 00Z22AUG2025

o-o ENSEMBLE MEAN
o-o 1000 - 1010 hPa
o-o 980 - 999 hPa

o-o 960 - 979 hPa
o-o 950 - 959 hPa
o-o < 950 hPa



weathermodels.com

No tropical development favored in the Gulf over the next 10 days.

However, we are monitoring Tropical Storm Erin in the Atlantic. Currently, we anticipate this storm to continue to turn N remaining on the E coastline.

Houston Pilots Visibility Chart (miles)



Visibility	Tue 3 pm	Tue 4 pm	Tue 5 pm	Tue 6 pm	Tue 7 pm	Tue 8 pm	Tue 9 pm	Tue 10 pm	Tue 11 pm	Wed 12 am	Wed 1 am	Wed 2 am	Wed 3 am	Wed 4 am	Wed 5 am	Wed 6 am	Wed 7 am	Wed 8 am	Wed 9 am	Wed 10 am	Wed 11 am	Wed 12 pm	Wed 1 pm	Wed 2 pm
Houston Pilots N - 610 Bridge	10	10	10	10	10	10	10	10	10	10	10	10	10	10	10	10	10	9	10	10	10	10	10	10
Houston Pilots M - Kinder 1	10	10	10	10	10	10	10	10	10	10	10	10	10	10	10	10	10	9	10	10	10	10	10	10
Houston Pilots L - Greens Bayou	10	10	10	10	10	10	10	10	10	10	10	10	10	10	10	10	10	9	10	10	10	10	10	10
Houston Pilots K - Shell Crude	10	10	10	10	10	10	10	10	10	10	10	10	10	10	10	10	10	9	10	10	10	10	10	10
Houston Pilots J - Lynchburg Ferries	10	10	10	10	10	10	10	10	10	10	10	10	10	10	10	10	10	9	10	10	10	10	10	10
Houston Pilots I - Exxon 3	10	10	10	10	10	10	10	10	10	10	10	10	10	10	10	10	10	7.9	9	10	10	10	10	10
Houston Pilots H - Morgans Point	10	10	10	10	10	10	10	10	10	10	10	10	10	10	10	10	10	9	10	10	10	10	10	10
Houston Pilots G - 75/76	10	10	10	10	10	10	10	10	10	10	10	10	10	10	10	10	10	10	10	10	10	10	10	10
Houston Pilots F - 63/64	10	10	10	10	10	10	10	10	10	10	10	10	10	10	10	10	10	10	10	10	10	10	10	10
Houston Pilots E - 51/52	10	10	10	10	10	10	10	10	10	10	10	10	10	10	10	10	10	10	10	10	10	10	10	10
Houston Pilots D - 37/38	10	10	10	10	10	10	10	10	10	10	10	10	10	10	10	10	10	10	10	10	10	10	10	10
Houston Pilots C - 25/26	10	10	10	10	10	10	10	10	10	10	10	10	10	10	10	10	10	10	10	10	10	10	10	10
Houston Pilots B - 11/12	10	10	10	10	10	10	10	10	10	10	10	10	10	10	10	10	10	10	10	10	10	10	10	10
Houston Pilots A - 1 & 2 Bravo	10	10	10	10	10	10	10	10	10	10	10	10	10	10	10	10	10	10	10	10	10	10	10	10

NOTE: This is automated data that may/may not agree with the official BAM thinking that's found on the daily slides or special visibility report slides. This data should be used as a guide only

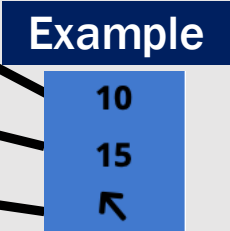
Houston Pilots Wind Chart



Forecast Confidence



Sustained Wind 10 Knots
Gusts 15 Knots
Wind from the SE



Wind	Tue 3 pm	Tue 4 pm	Tue 5 pm	Tue 6 pm	Tue 7 pm	Tue 8 pm	Tue 9 pm	Tue 10 pm	Tue 11 pm	Wed 12 am	Wed 1 am	Wed 2 am	Wed 3 am	Wed 4 am	Wed 5 am	Wed 6 am	Wed 7 am	Wed 8 am	Wed 9 am	Wed 10 am	Wed 11 am	Wed 12 pm	Wed 1 pm	Wed 2 pm
Houston Pilots N - 610 Bridge	5 9 ↙	5 9 ↙	5 9 ↙	5 9 ↙	5 9 ↙	5 9 ↙	5 9 ↙	3 8 ↙	3 7 ↙	3 6 ↑	3 6 ↑	2 6 ↗	2 6 ↗	2 6 ↗	3 6 ↗	2 5 ↗	2 5 ↗	2 5 →	2 5 →	2 6 →	3 7 →	3 8 →	3 7 ↘	3 7 ↘
Houston Pilots M - Kinder 1	5 9 ↙	5 9 ↙	5 9 ↙	5 9 ↙	5 9 ↙	5 9 ↙	5 9 ↙	3 8 ↙	3 7 ↙	3 6 ↑	2 6 ↑	2 6 ↗	2 6 ↗	2 6 ↗	3 6 ↗	2 5 ↗	2 5 ↗	2 5 →	2 5 →	2 6 →	3 7 →	3 8 →	3 7 ↘	3 7 ↘
Houston Pilots L - Greens Bayou	5 9 ↙	5 9 ↙	5 9 ↙	5 9 ↙	5 9 ↙	5 9 ↙	3 9 ↙	3 7 ↙	3 7 ↑	2 6 ↑	2 5 ↑	2 5 ↗	2 5 ↗	2 5 ↗	2 5 ↗	2 5 ↗	2 5 →	2 5 →	2 5 →	2 5 →	3 7 →	3 8 →	3 7 ↘	3 7 ↘
Houston Pilots K - Shell Crude	5 9 ↙	5 9 ↙	5 9 ↙	5 9 ↙	5 9 ↙	5 9 ↙	3 9 ↙	3 7 ↙	3 7 ↑	2 6 ↑	2 5 ↑	2 5 ↗	2 5 ↗	2 5 ↗	2 5 ↗	2 5 ↗	2 5 →	2 5 →	2 5 →	2 5 →	3 7 →	3 7 →	3 7 ↘	3 7 ↘
Houston Pilots J - Lynchburg Ferries	5 9 ↙	5 9 ↙	5 9 ↙	3 9 ↙	5 9 ↙	5 9 ↙	3 9 ↙	3 7 ↙	2 7 ↑	2 5 ↑	2 5 ↑	2 5 ↗	1 5 ↗	2 5 ↗	2 5 ↗	1 5 ↗	1 5 →	1 5 →	1 5 →	2 5 →	3 7 →	3 8 →	3 7 ↘	3 7 ↘
Houston Pilots I - Exxon 3	6 10 ↙	7 12 ↙	7 10 ↙	7 10 ↙	7 10 ↙	8 12 ↙	7 10 ↙	7 10 ↙	6 9 ↙	6 8 ↑	6 8 ↑	6 8 ↗	6 8 ↗	6 8 ↗	6 8 ↗	6 8 ↗	6 7 →	6 7 →	5 7 →	5 7 →	5 8 →	5 8 →	5 8 ↘	6 9 ↘
Houston Pilots H - Morgans Point	6 10 ↙	7 12 ↙	7 10 ↙	7 10 ↙	7 10 ↙	8 10 ↙	7 10 ↙	7 9 ↙	6 9 ↑	6 8 ↑	6 8 ↑	6 8 ↗	6 8 ↗	6 8 ↗	6 8 ↗	6 8 ↗	6 8 →	6 8 →	5 7 →	5 7 →	5 8 →	5 8 →	5 8 ↘	6 9 ↘
Houston Pilots G - 75/76	6 10 ↙	6 12 ↙	7 12 ↙	6 10 ↙	7 10 ↙	8 12 ↙	8 10 ↙	7 10 ↙	7 9 ↑	7 9 ↑	6 9 ↑	6 9 ↗	6 9 ↗	6 9 ↗	7 9 ↗	6 9 ↗	6 9 →	6 9 →	6 9 →	6 9 →	6 9 →	5 8 →	3 8 ↑	5 9 ↘
Houston Pilots F - 63/64	5 9 ↙	6 10 ↙	6 10 ↙	6 10 ↙	7 10 ↙	8 12 ↙	8 10 ↙	7 10 ↙	7 9 ↑	7 9 ↑	6 9 ↑	6 9 ↗	6 9 ↗	6 9 ↗	7 9 ↗	7 9 ↗	7 9 →	7 9 →	7 9 →	6 9 →	6 9 →	5 8 →	3 8 ↑	3 8 ↘
Houston Pilots E - 51/52	5 9 ↙	6 10 ↙	6 10 ↙	6 10 ↙	7 10 ↙	8 12 ↙	8 10 ↙	7 9 ↙	7 9 ↑	6 9 ↑	6 9 ↑	6 9 ↗	6 9 ↗	6 9 ↗	7 9 ↗	7 9 ↗	7 10 →	7 10 →	6 9 →	6 9 →	6 9 →	5 8 →	3 8 ↓	3 8 ↘
Houston Pilots D - 37/38	5 9 ↙	5 9 ↙	6 9 ↙	6 9 ↙	6 10 ↙	8 10 ↙	7 10 ↙	7 9 ↙	7 9 ↑	6 9 ↑	6 9 ↑	6 9 ↗	6 9 ↗	6 9 ↗	7 9 ↗	7 9 ↗	7 10 →	7 10 →	6 9 →	6 9 →	6 9 →	5 8 →	3 8 ↓	3 8 ↘
Houston Pilots C - 25/26	5 9 ↙	5 9 ↙	5 9 ↙	6 9 ↙	6 10 ↙	7 10 ↙	7 9 ↙	6 9 ↙	6 9 ↑	6 9 ↑	6 9 ↑	6 9 ↗	6 9 ↗	6 9 ↗	7 9 ↗	6 9 ↗	6 9 →	7 10 →	6 9 →	6 9 →	6 9 →	5 8 →	5 8 ↓	5 8 ↘
Houston Pilots B - 11/12	5 9 ↙	5 9 ↙	5 9 ↙	6 9 ↙	6 9 ↙	6 9 ↙	6 9 ↙	6 9 ↙	6 9 ↑	6 9 ↑	6 9 ↑	6 9 ↗	6 9 ↗	6 9 ↗	6 10 ↗	6 10 ↗	6 10 →	6 10 →	6 9 →	6 9 →	6 9 →	5 8 →	5 8 ↓	5 8 ↘
Houston Pilots A - 1 & 2 Bravo	3 9 ↙	3 9 ↙	5 9 ↙	6 9 ↙	6 9 ↙	6 9 ↙	6 9 ↙	6 9 ↙	6 9 ↑	6 9 ↑	6 9 ↑	6 9 ↗	7 10 ↗	7 10 ↗	8 12 ↗	8 12 ↗	8 12 →	8 12 →	7 10 →	6 10 →	6 10 →	5 8 →	3 8 ↓	3 8 ↘

NOTE: This is automated data that may/may not agree with the official BAM thinking that's found on the daily slides.
This data should be used as a guide only.

Houston Pilots: TUE. 8/12/2025

Forecast Discussion

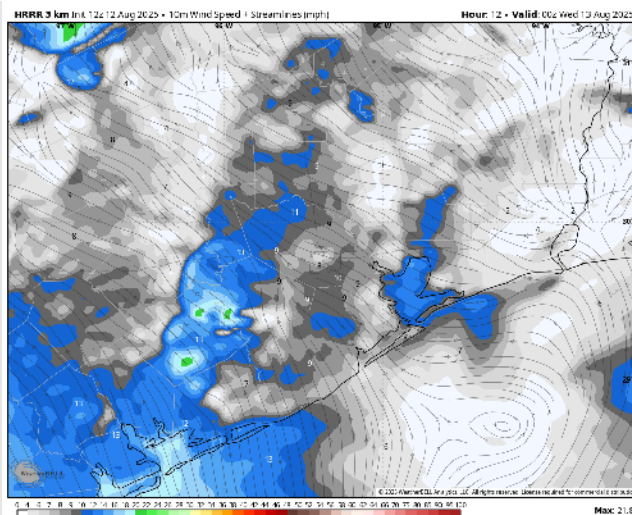
Precip: Hit/miss showers and storms (30%) will be possible through ~8PM. Lightning, wind gusts of 20– 25 kts, and heavy downpours will be possible.

Wind: Winds will be variable through 4 PM before settling out of the SE. **N of Morgan's Point:** Winds will be at 3 – 8 kts. **S of Morgan's Point:** Winds will be 5 – 10 kts.

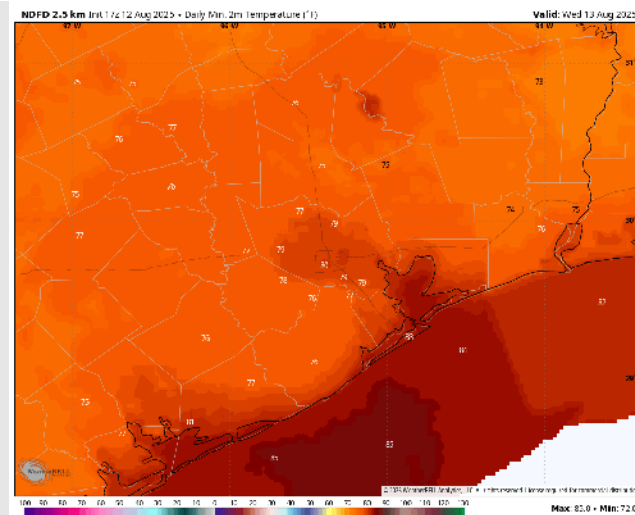
Low Temps: **N of Morgan's Point:** Near 80 F. **S of Morgan's Point:** Low 80s F.

Visibility: No visibility concerns today.

Precip Image: 4 PM CT



Wind Speed:
7 PM CT



Low Temps
WED AM

Houston Pilots: WED. 8/13/2025

Forecast Discussion

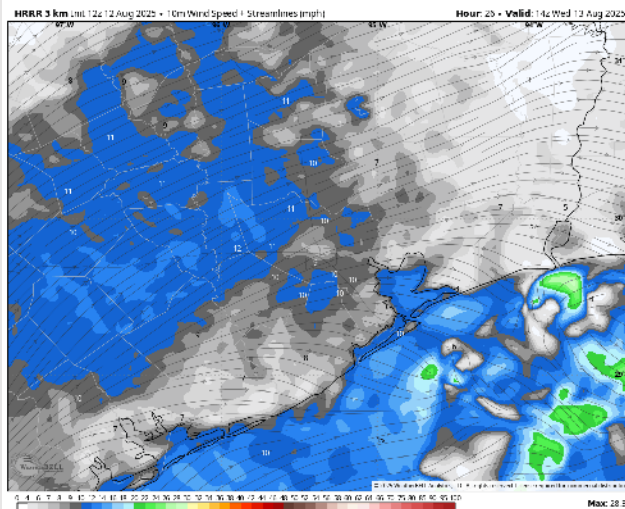
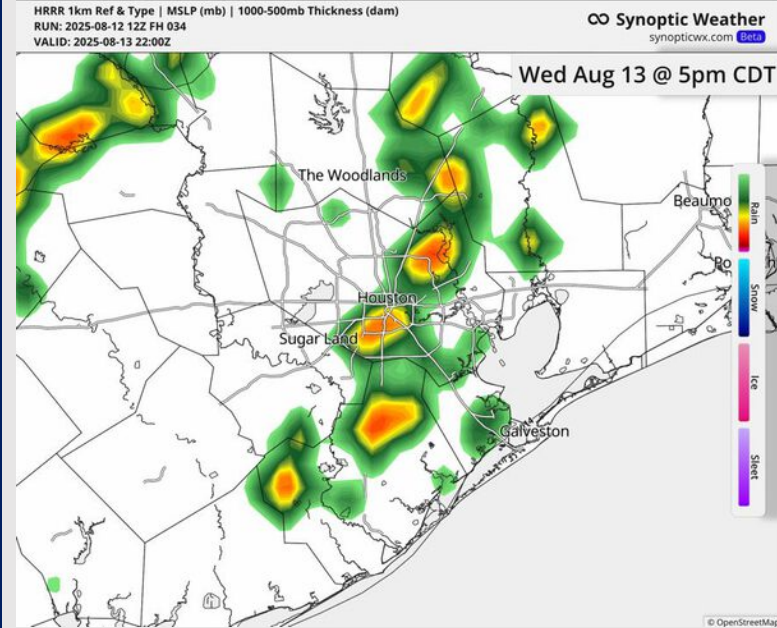
Precip: Hit/miss showers in play S of Morgan's Point from 5AM to 2PM, then for all Stations from 2-8 PM. A few storms will be possible.

Wind: Winds will shift clockwise through the AM before settling out of the SE by 2 PM. **N of Morgan's Point:** Winds will be at 3 – 8 kts. **S of Morgan's Point:** Winds will be at 5 – 10 kts, increasing to 8 – 13 kts after 3 PM.

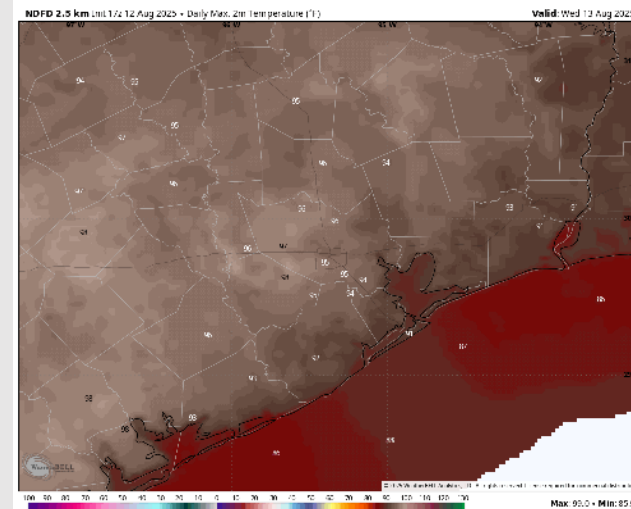
High Temps: **N of Morgan's Point:** Mid 90s F. **S of Morgan's Point:** Near 90 F.

Visibility: No visibility concerns Wednesday.

Precip Image: 5 PM CT



Wind Speed:
9 AM CT



High Temps
Wednesday

Houston Pilots: THU. 8/14/2025

Forecast Discussion

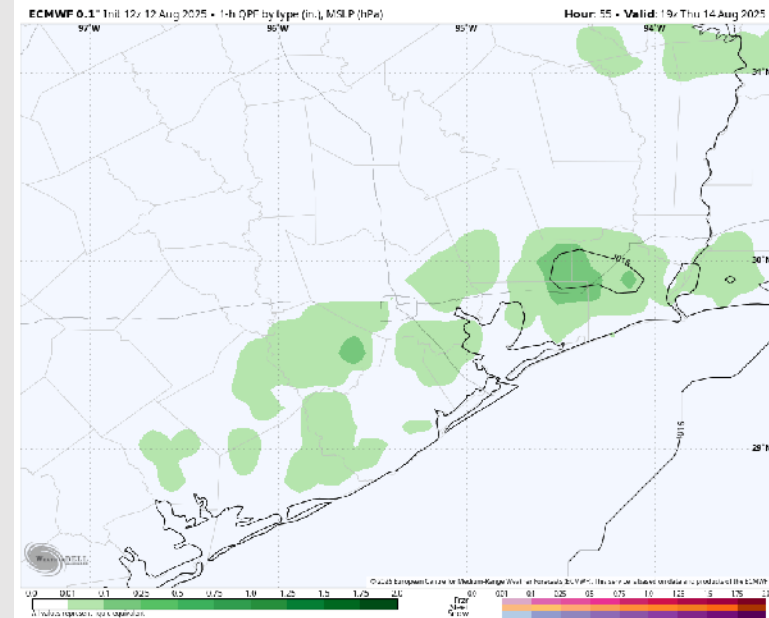
Precip: Isolated showers possible S of Morgan's Point from 5 AM to 1 PM, then hit/miss showers possible for all Stations through 7 PM.

Wind: Winds will generally be out of the S/SW. **N of Morgan's Point:** Winds will be at 4 – 9 kts. **S of Morgan's Point:** Winds will be at 7 – 12 kts.

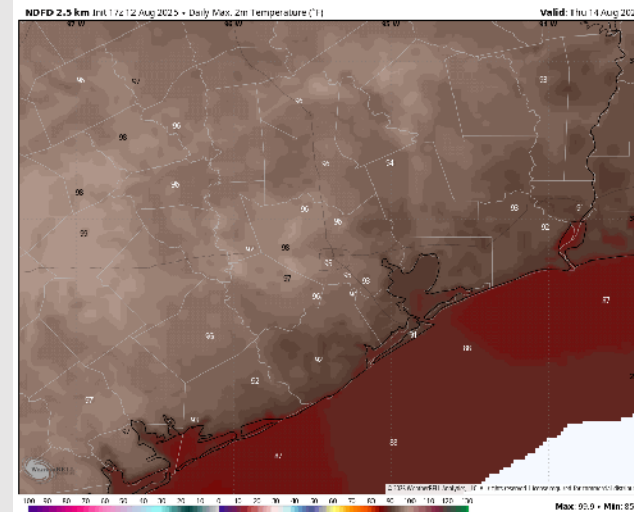
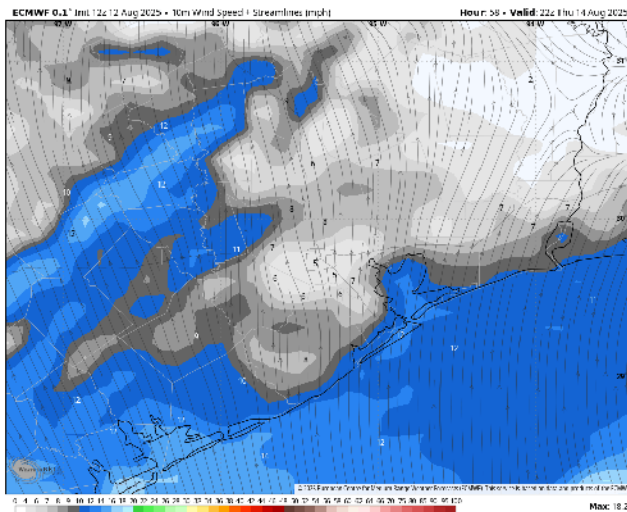
High Temps: **N of Morgan's Point:** Mid 90s F. **S of Morgan's Point:** Near 90 F.

Visibility: No visibility concerns Thursday.

Precip Image: 2 PM CT



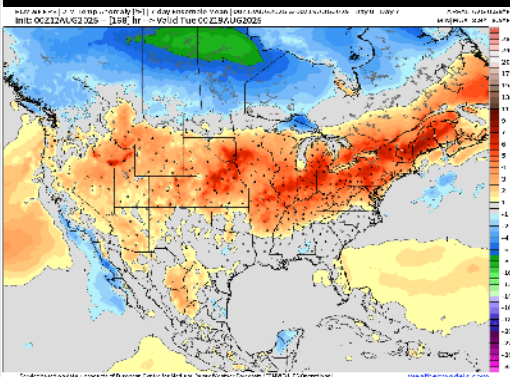
Wind Speed:
5 PM CT



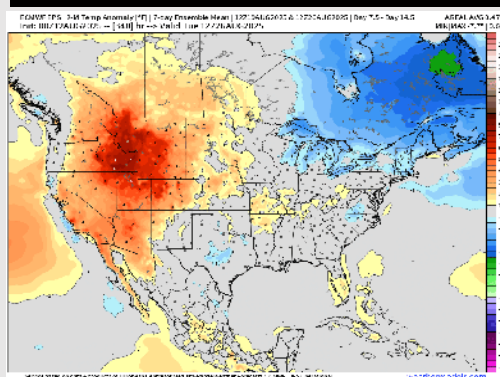
High Temps
Thursday

Houston Pilots: 8/12/2025

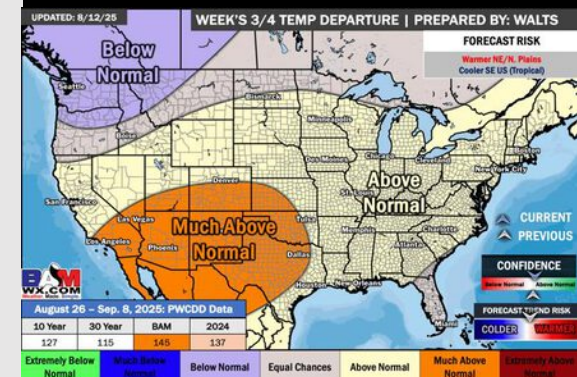
Next 7 Day Temperature Departure



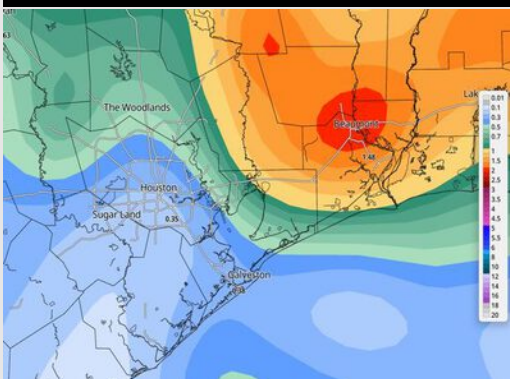
8-14 Day Temperature Departure



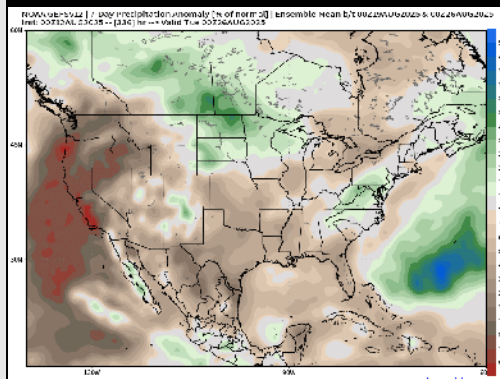
15-30 Day Temperature Departure



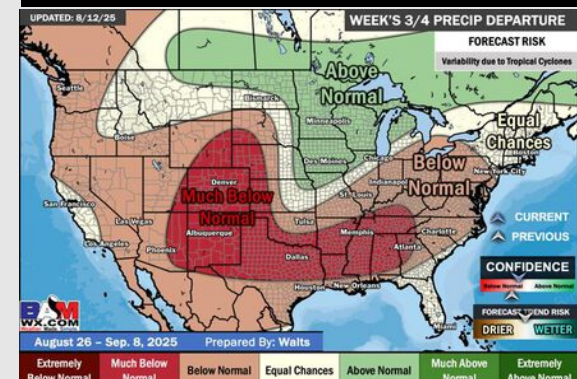
Next 7 Day Total Precipitation



8-14 Day % of Average Precip.



15-30 Day % of Average Precip.



- Temps are expected to be near normal for the next 7 days with scattered rain chances throughout the week.
- Near normal temperatures and below normal rain chances are favored for days 8 – 14.
- Above normal temperatures are favored for the end of August with below normal rainfall chances.