

Houston Pilots Forecast Package



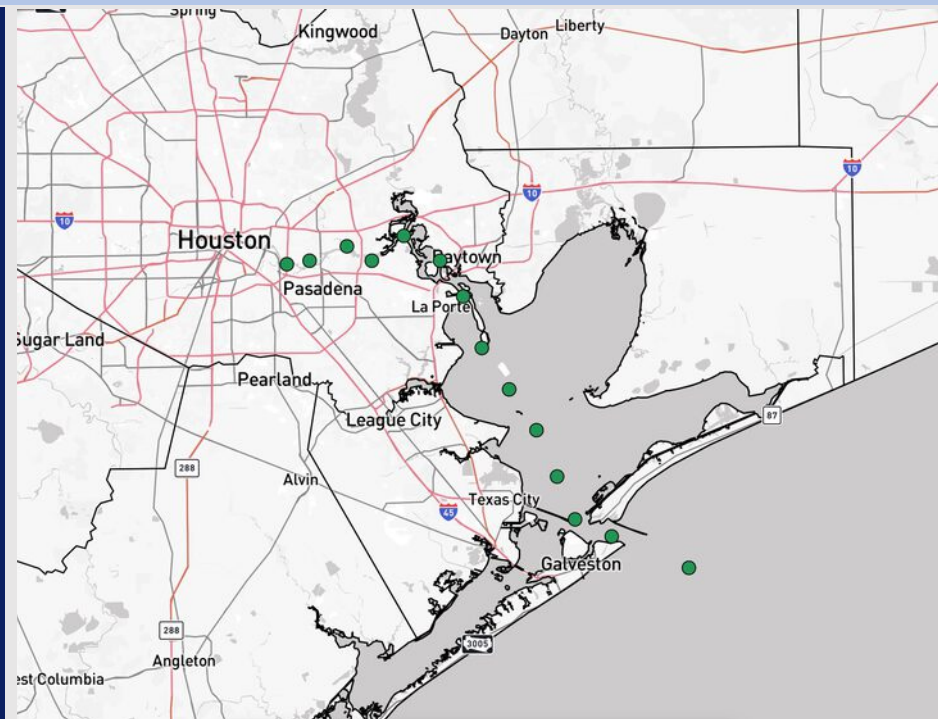
Updated: 9:45 PM CT

Wednesday, August 6, 2025

Forecaster: Sam Lang

Weather Headlines

- Isolated to hit/miss showers and storms in play over the next 48 hours, before coverage becomes more scattered on Saturday.
- Some strong storms will occur at times, with risks for lightning, heavy downpours and 25+ kt wind gusts.
- No tropical development favored in the Gulf over the next 10 days.



Current Radar: 9:45 PM CT

As always, please do not hesitate to reach out to us with any forecast questions at **(317)-560-8122**. Press 1 for forecast questions.

You can also access real-time forecast updates and 24/7 meteorological chat assistance on your **Clarity** app. Click [here](#) for login assistance.

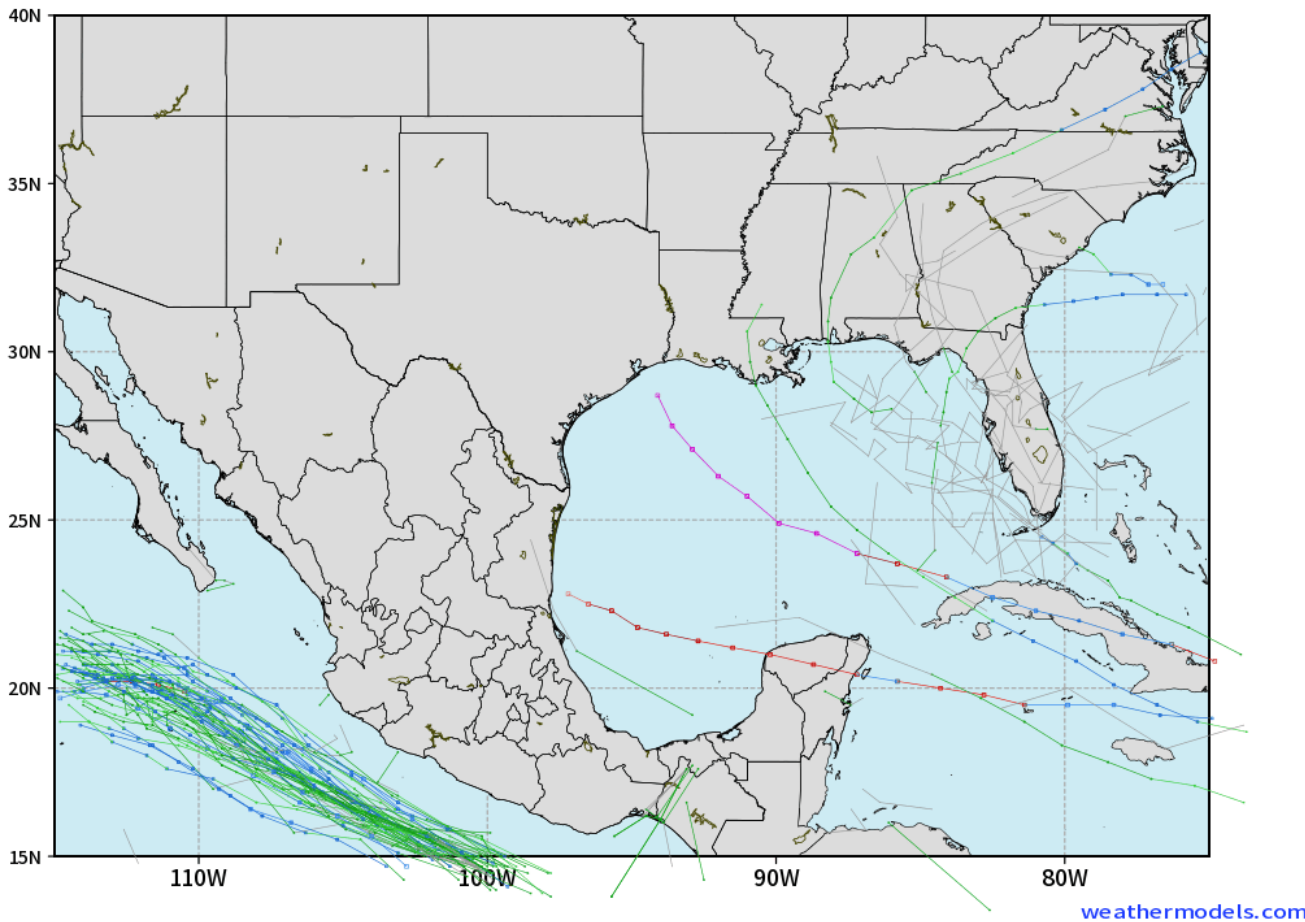


Houston Pilots Tropical Update

10-Day Tropical Outlook

ECMWF GULF EPS Cyclone Locations --> Next [10-days]
INIT: 12Z06AUG2025 --> UNTIL 12Z16AUG2025

o-o ENSEMBLE MEAN
o-o 1000 - 1010 hPa
o-o 980 - 999 hPa
o-o 960 - 979 hPa
o-o 950 - 959 hPa
o-o < 950 hPa



No tropical development favored in the Gulf over the next 10 days.

However, we are monitoring a potential uptick in tropical activity mid to late August.

Houston Pilots Visibility Chart (miles)



Visibility	Wed 11 pm	Thu 12 am	Thu 1 am	Thu 2 am	Thu 3 am	Thu 4 am	Thu 5 am	Thu 6 am	Thu 7 am	Thu 8 am	Thu 9 am	Thu 10 am	Thu 11 am	Thu 12 pm	Thu 1 pm	Thu 2 pm	Thu 3 pm	Thu 4 pm	Thu 5 pm	Thu 6 pm	Thu 7 pm	Thu 8 pm	Thu 9 pm	Thu 10 pm
Houston Pilots N - 610 Bridge	10	10	10	10	10	10	10	7.9	6.9	4.9	6.9	10	10	10	10	10	10	10	10	10	10	10	10	10
Houston Pilots M - Kinder 1	10	10	10	10	10	10	10	7.9	6.9	5.9	7.9	10	10	10	10	10	10	10	10	10	10	10	10	10
Houston Pilots L - Greens Bayou	10	10	10	10	10	10	10	7.9	6.9	5.9	7.9	10	10	10	10	10	10	10	10	10	10	10	10	10
Houston Pilots K - Shell Crude	10	10	10	10	10	10	10	7.9	6.9	5.9	7.9	10	10	10	10	10	10	10	10	10	10	10	10	10
Houston Pilots J - Lynchburg Ferries	10	10	10	10	10	10	10	6.9	6.9	5.9	7.9	10	10	10	10	10	10	10	10	10	10	10	10	10
Houston Pilots I - Exxon 3	10	10	10	10	10	10	10	6.9	7.9	5.9	7.9	10	10	10	10	10	10	10	10	10	10	10	10	10
Houston Pilots H - Morgans Point	10	10	10	10	10	10	10	9	7.9	5.9	7.9	10	10	10	10	10	10	10	10	10	10	10	10	10
Houston Pilots G - 75/76	10	10	10	10	10	10	10	10	9	6.9	7.9	10	10	10	10	10	10	10	10	10	10	10	10	10
Houston Pilots F - 63/64	10	10	10	10	10	10	10	10	10	6.9	7.9	10	10	10	10	10	10	10	10	10	10	10	10	10
Houston Pilots E - 51/52	10	10	10	10	10	10	10	10	10	6.9	10	10	10	10	10	10	10	10	10	10	10	10	10	10
Houston Pilots D - 37/38	10	10	10	10	10	10	10	10	10	6.9	10	10	10	10	10	10	10	10	10	10	10	10	10	10
Houston Pilots C - 25/26	10	10	10	10	10	10	10	10	10	6.9	10	10	10	10	10	10	10	10	10	10	10	10	10	10
Houston Pilots B - 11/12	10	10	10	10	10	10	10	10	10	7.9	10	10	10	10	10	10	10	10	10	10	10	10	10	10
Houston Pilots A - 1 & 2 Bravo	10	10	10	10	10	10	10	10	10	9	10	10	10	10	10	10	10	10	10	10	10	10	10	10

NOTE: This is automated data that may/may not agree with the official BAM thinking that's found on the daily slides or special visibility report slides. This data should be used as a guide only

Houston Pilots Wind Chart



Forecast Confidence

Above Normal

Below Normal

Sustained Wind 10 Knots

Gusts 15 Knots

Wind from the SE

Example

10

15

↖

Wind	Wed 11 pm	Thu 12 am	Thu 1 am	Thu 2 am	Thu 3 am	Thu 4 am	Thu 5 am	Thu 6 am	Thu 7 am	Thu 8 am	Thu 9 am	Thu 10 am	Thu 11 am	Thu 12 pm	Thu 1 pm	Thu 2 pm	Thu 3 pm	Thu 4 pm	Thu 5 pm	Thu 6 pm	Thu 7 pm	Thu 8 pm	Thu 9 pm	Thu 10 pm
Houston Pilots N - 610 Bridge	5 9 ↑	3 7 ↑	3 7 ↑	3 7 ↑	2 6 ↗	2 6 ↗	1 5 ↗	1 3 ↗	1 3 →	1 3 ↓	1 3 ↓	1 3 →	1 5 →	2 6 ↘	2 5 ↘	2 6 ↖	3 7 ↖	3 7 ↖	3 8 ↖	5 9 ↖	6 10 ↖	6 12 ↖	6 10 ↑	5 9 ↑
Houston Pilots M - Kinder 1	5 9 ↑	3 7 ↑	3 7 ↑	3 7 ↑	2 6 ↗	2 5 ↗	1 5 ↗	1 3 ↗	1 3 →	1 3 ↓	1 3 ↓	1 3 →	1 5 →	2 6 ↘	2 5 ↘	3 6 ↑	3 7 ↖	3 7 ↖	3 8 ↖	5 9 ↖	6 10 ↖	6 10 ↑	6 10 ↑	5 9 ↑
Houston Pilots L - Greens Bayou	3 8 ↑	3 7 ↑	3 6 ↑	3 7 ↑	2 6 ↗	2 5 ↗	1 5 ↗	1 3 ↗	1 2 ↘	1 2 ↓	1 2 ↓	1 2 →	1 5 →	2 6 ↘	2 6 ↘	3 6 ↖	3 7 ↖	3 7 ↖	3 9 ↖	5 9 ↖	5 10 ↖	6 10 ↑	5 9 ↑	5 8 ↑
Houston Pilots K - Shell Crude	3 8 ↑	3 7 ↑	3 6 ↑	3 7 ↑	2 6 ↗	1 5 ↗	1 5 ↗	1 3 ↗	1 2 ↘	1 2 ↓	1 2 ↓	1 2 →	1 5 →	2 6 ↘	3 6 ↓	3 7 ↖	3 7 ↖	3 8 ↖	5 9 ↖	5 9 ↖	6 9 ↖	6 10 ↑	5 9 ↑	3 8 ↑
Houston Pilots J - Lynchburg Ferries	3 8 ↑	3 7 ↑	2 6 ↑	2 6 ↑	2 5 ↗	1 5 ↗	1 3 ↗	1 3 ↗	1 2 ↘	1 2 ↓	1 2 ↓	1 2 →	1 5 →	2 6 ↘	2 6 ↘	3 6 ↖	3 7 ↖	3 8 ↖	3 9 ↖	5 9 ↖	5 10 ↖	6 10 ↑	5 9 ↑	3 8 ↑
Houston Pilots I - Exxon 3	8 12 ↑	7 10 ↑	6 9 ↑	6 9 ↑	6 7 ↗	5 7 ↗	3 7 ↗	3 6 ↗	3 6 →	3 6 ↓	3 5 ↓	3 5 →	3 6 →	3 7 ↘	3 7 ↘	5 8 ↖	6 9 ↖	6 9 ↖	7 12 ↖	7 10 ↖	8 13 ↖	8 13 ↑	8 12 ↑	8 12 ↑
Houston Pilots H - Morgans Point	8 10 ↑	7 10 ↑	6 9 ↑	6 8 ↑	6 7 ↗	5 7 ↗	3 7 ↗	3 6 ↗	3 6 →	3 6 ↓	3 6 ↓	3 6 →	3 7 →	3 7 ↘	3 7 ↘	5 8 ↖	6 9 ↖	6 9 ↖	7 12 ↖	7 10 ↖	8 13 ↖	8 13 ↑	8 12 ↑	8 10 ↑
Houston Pilots G - 75/76	8 12 ↑	8 10 ↑	7 10 ↑	7 10 ↑	6 8 ↗	6 8 ↗	6 7 ↗	5 7 ↗	5 7 →	5 7 ↓	3 7 ↓	3 6 ↓	3 7 →	3 7 ↘	3 7 ↘	3 8 ↖	5 8 ↖	6 9 ↖	7 12 ↖	7 12 ↖	8 13 ↖	8 13 ↑	8 13 ↑	8 12 ↑
Houston Pilots F - 63/64	8 12 ↑	8 10 ↑	7 10 ↑	7 10 ↑	6 9 ↗	6 8 ↗	6 7 ↗	5 7 ↗	5 7 →	5 7 ↓	3 7 ↓	3 6 ↓	3 7 →	3 7 ↘	3 7 ↘	3 8 ↖	5 8 ↖	6 9 ↖	6 12 ↖	7 13 ↖	8 13 ↑	8 13 ↑	8 12 ↑	8 12 ↑
Houston Pilots E - 51/52	8 12 ↑	8 10 ↑	7 10 ↑	7 10 ↑	6 9 ↗	6 8 ↗	6 7 ↗	5 7 ↗	5 7 →	5 7 ↓	3 7 ↓	3 6 ↓	3 7 →	3 7 ↘	3 7 ↘	3 8 ↖	3 9 ↖	5 12 ↖	6 10 ↖	7 13 ↖	8 13 ↑	8 12 ↑	8 12 ↑	8 10 ↑
Houston Pilots D - 37/38	8 12 ↑	8 10 ↑	8 10 ↑	7 10 ↑	6 9 ↗	6 8 ↗	6 7 ↗	5 7 ↗	5 7 →	5 7 ↓	3 7 ↓	3 6 ↓	3 7 →	3 7 ↘	3 7 ↘	3 8 ↖	3 8 ↖	5 10 ↖	6 10 ↖	6 12 ↖	7 13 ↑	8 13 ↑	8 12 ↑	8 10 ↑
Houston Pilots C - 25/26	8 10 ↑	7 10 ↑	7 10 ↑	7 10 ↑	6 9 ↗	6 8 ↗	6 7 ↗	5 7 ↗	5 7 →	5 7 ↓	3 7 ↓	3 6 ↓	3 7 →	3 7 ↘	3 7 ↘	3 8 ↖	3 7 ↖	5 8 ↖	6 10 ↖	6 9 ↖	7 12 ↑	8 12 ↑	8 10 ↑	7 10 ↑
Houston Pilots B - 11/12	6 ↑	6 10 ↑	6 10 ↑	6 10 ↑	6 9 ↗	5 8 ↗	5 7 ↗	3 7 ↗	3 7 →	3 7 ↓	3 7 ↓	3 7 →	3 7 ↘	3 7 ↘	3 7 ↓	3 8 ↖	3 7 ↖	3 8 ↖	5 10 ↖	6 9 ↖	6 10 ↑	7 10 ↑	6 10 ↑	6 9 ↑
Houston Pilots A - 1 & 2 Bravo	8 ↑	8 10 ↑	8 12 ↑	8 10 ↑	7 10 ↗	6 9 ↗	6 9 ↗	6 8 ↗	6 7 ↗	6 7 →	5 7 ↓	5 8 ↓	3 7 ↓	3 7 ↓	3 6 ↓	2 7 ↖	3 7 ↖	3 8 ↖	6 10 ↖	6 9 ↖	6 10 ↑	7 10 ↑	6 10 ↑	6 9 ↑

NOTE: This is automated data that may/may not agree with the official BAM thinking that's found on the daily slides.
This data should be used as a guide only.

Houston Pilots: THU. 8/7/2025

Forecast Discussion

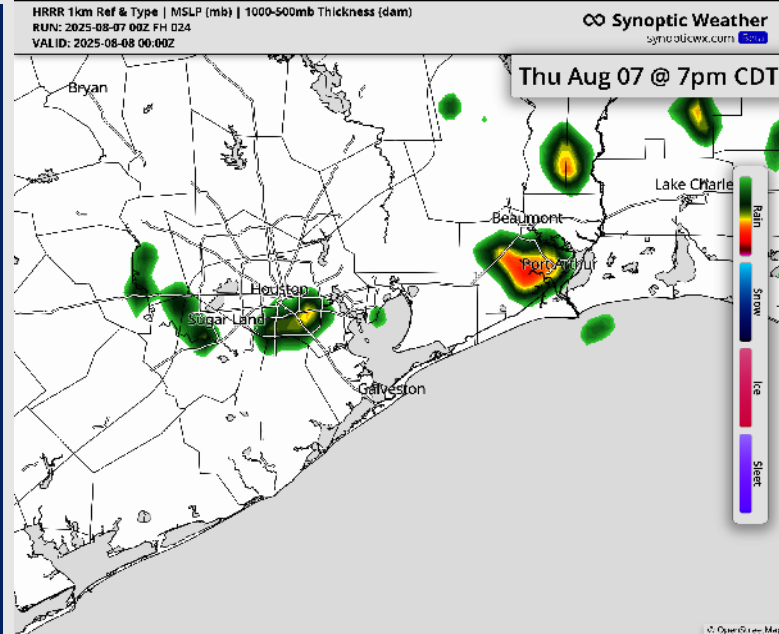
Precip: Hit/miss showers and storms in play for Stations S of Morgan's Point between 6 AM and 5 PM. Hit/miss storms in play for all Stations from 5-8PM. **Some strong storms will carry risks for lightning, heavy downpours and 25 kt wind gusts.**

Wind: Winds will be variable through 4 PM before settling out of the SW.
N of Morgan's Point: Winds will be at 4 – 9 kts. **S of Morgan's Point:** Winds will be at 5 – 10 kts.

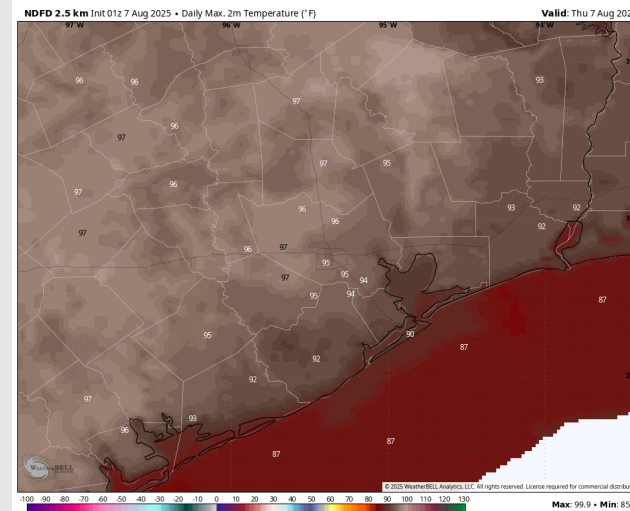
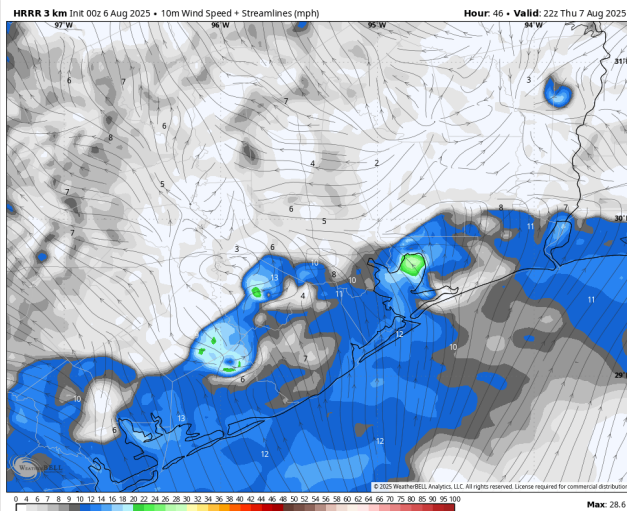
High Temps: **N of Morgan's Point:** Mid 90s F. **S of Morgan's Point:** Low 90s F.

Visibility: No fog concerns today, however, visibilities may be reduced in the early morning due to drizzle/mist, as well as under heavier downpours in the afternoon.

Precip Image: 7 PM CT



Wind Speed:
5 PM CT



High Temps
Today

Houston Pilots: FRI. 8/8/2025

Forecast Discussion

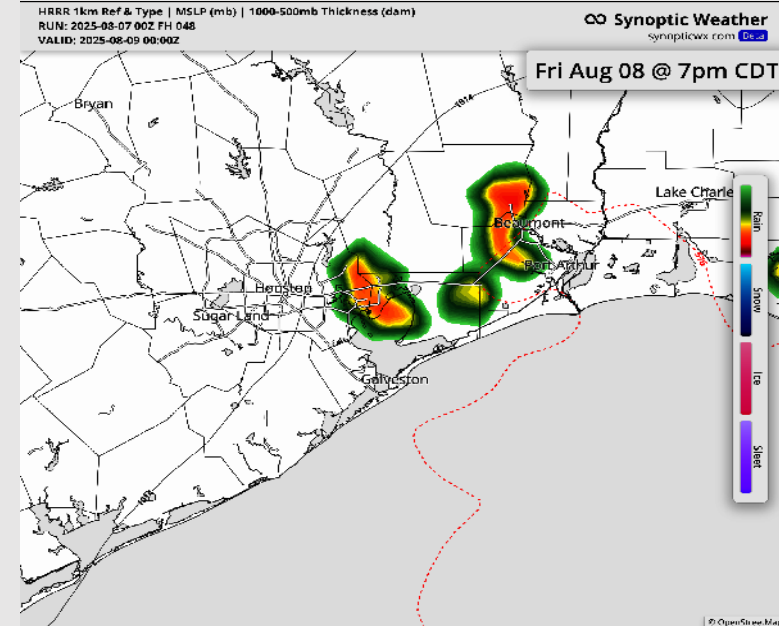
Precip: Isolated showers/storms from 12 – 3 PM will affect Stations S of Morgan's Point. Scattered showers and storms expected for ALL Stations from 3PM – 8 PM. **Some storms may carry risks of heavy downpours and lightning.**

Wind: Winds will be out of the W/SW until becoming variable from 11AM-4PM. Winds will transition to out of the S/SE at 4PM. **N of Morgan's Point:** Winds will be at 11–16 kts. **S of Morgan's Point:** Winds will be at 4 – 9 kts.

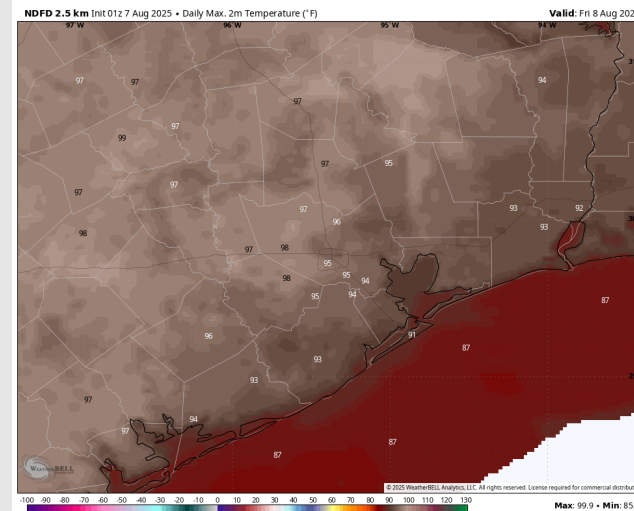
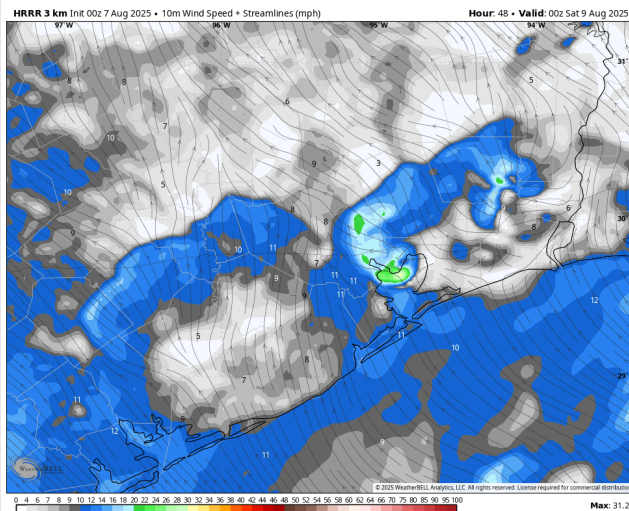
High Temps: **N of Morgan's Point:** Mid 90s F. **S of Morgan's Point:** High 80s to low 90s F.

Visibility: No fog concerns Friday, however, visibilities may be reduced briefly under heavier downpours.

Precip Image: 7 PM CT



Wind Speed:
7 PM CT



High Temps
Friday

Houston Pilots: SAT. 8/9/2025

Forecast Discussion

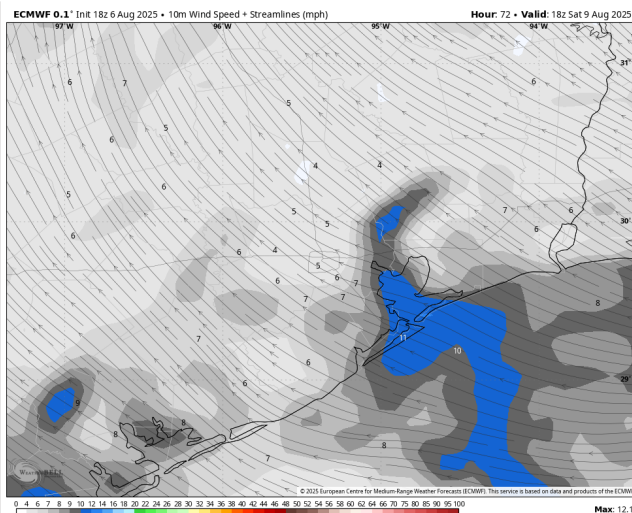
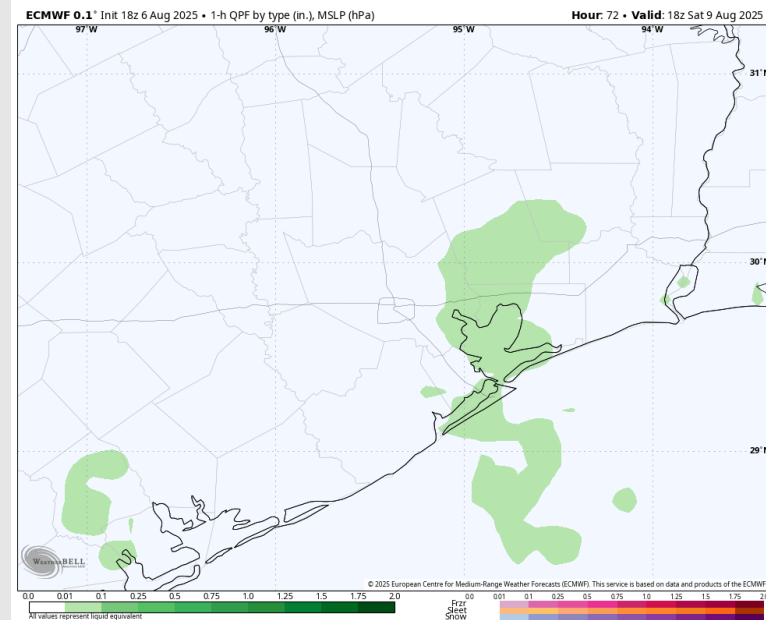
Precip: Scattered showers and storms are possible from 5 AM to 11 AM for Stations S of Morgan's Point. After 11 AM, scattered showers/storms are possible for all Stations until 7 PM. **Some strong storms will carry risks for lightning, wind gusts of 25+ kts and heavier downpours.**

Wind: Winds will be out of the SE. **N of Morgan's Point:** Winds will be at 2 – 7 kts. **S of Morgan's Point:** Winds will be 6– 11 kts.

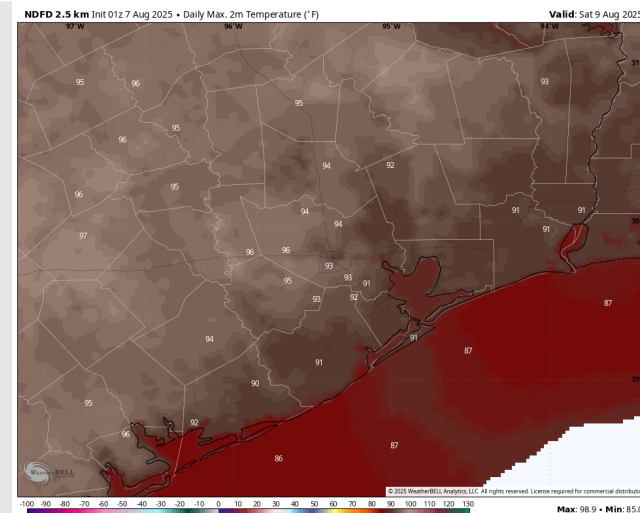
High Temps: **N of Morgan's Point:** Mid 90s F. **S of Morgan's Point:** High 80s to low 90s F.

Visibility: No fog concerns Saturday, however, visibilities may be reduced briefly under heavier downpours.

Precip Image: 1 PM CT



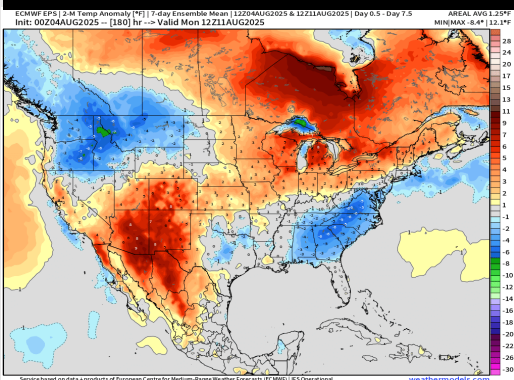
Wind Speed:
1 PM CT



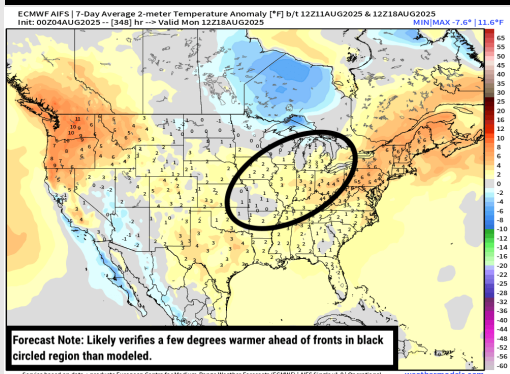
High Temps
Saturday

Houston Pilots: 8/7/25

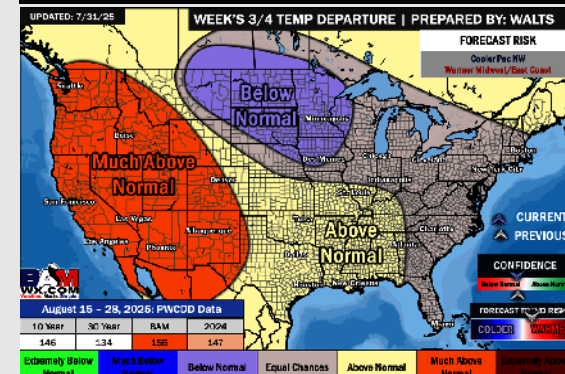
Next 7 Day Temperature Departure



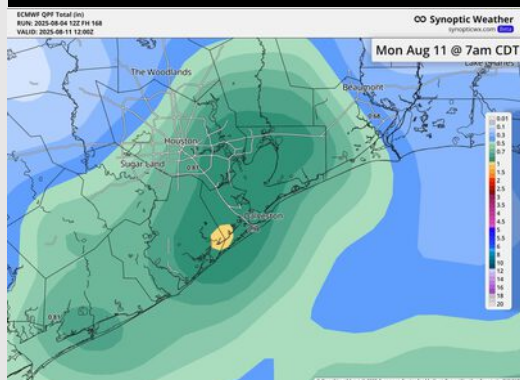
8-14 Day Temperature Departure



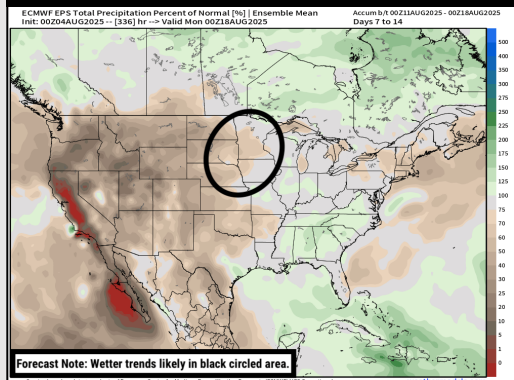
15-30 Day Temperature Departure



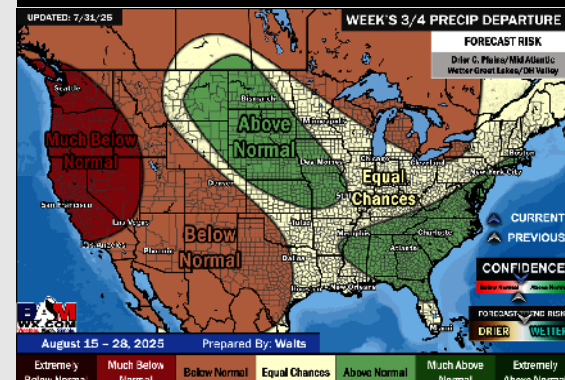
Next 7 Day Total Precipitation



8-14 Day % of Average Precip.



15-30 Day % of Average Precip.



- Temps are expected to be near normal for the next 7 days with scattered rain chances into early/mid week.
- Above normal and near normal rain chances are favored for days 8 – 14.
- Above normal temperatures are favored for the start of August along with near normal rainfall chances.