

# INDIANA STATE FAIR

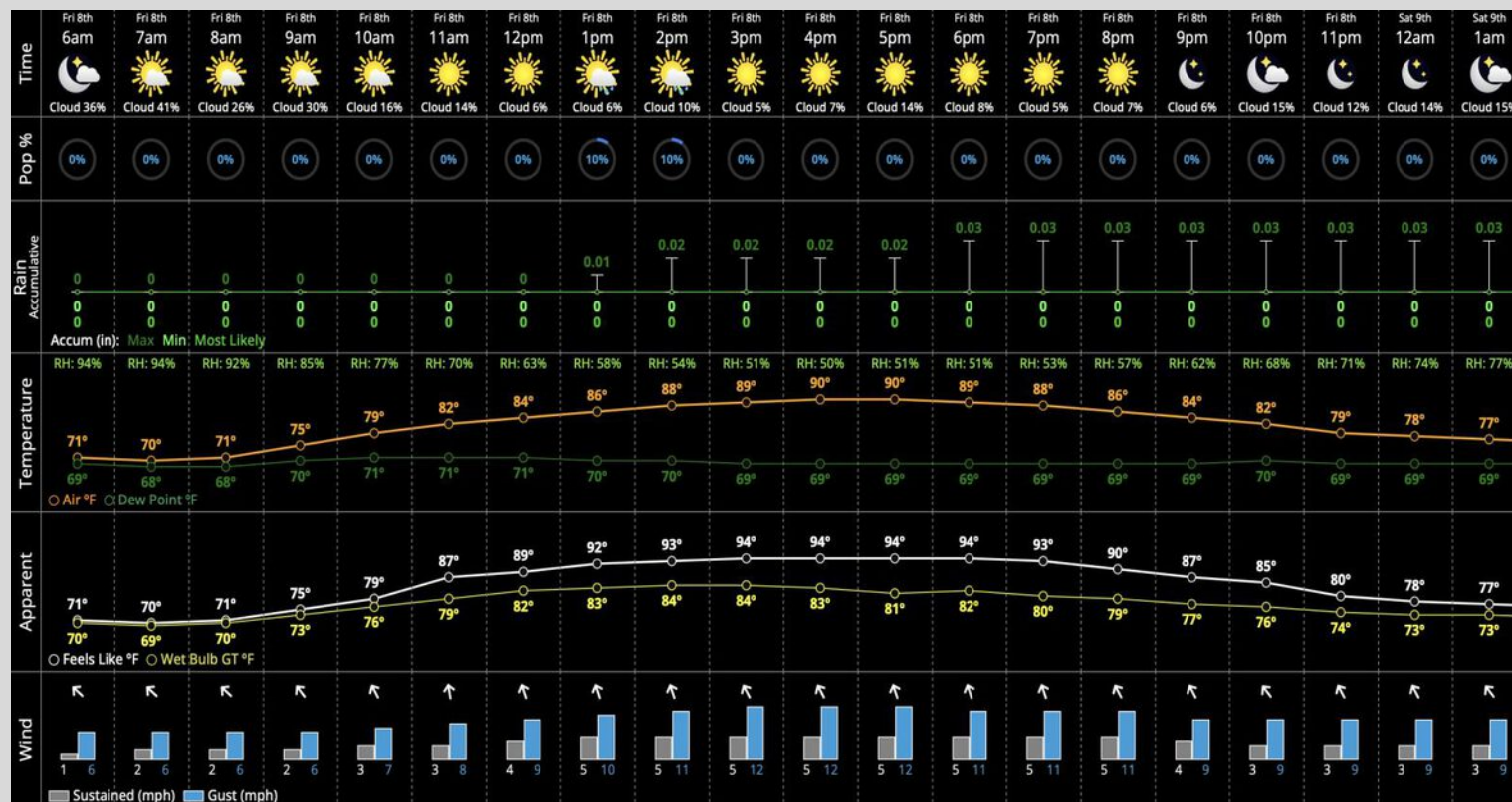
Friday, August 8, 2025

6 AM ET Weather Forecast

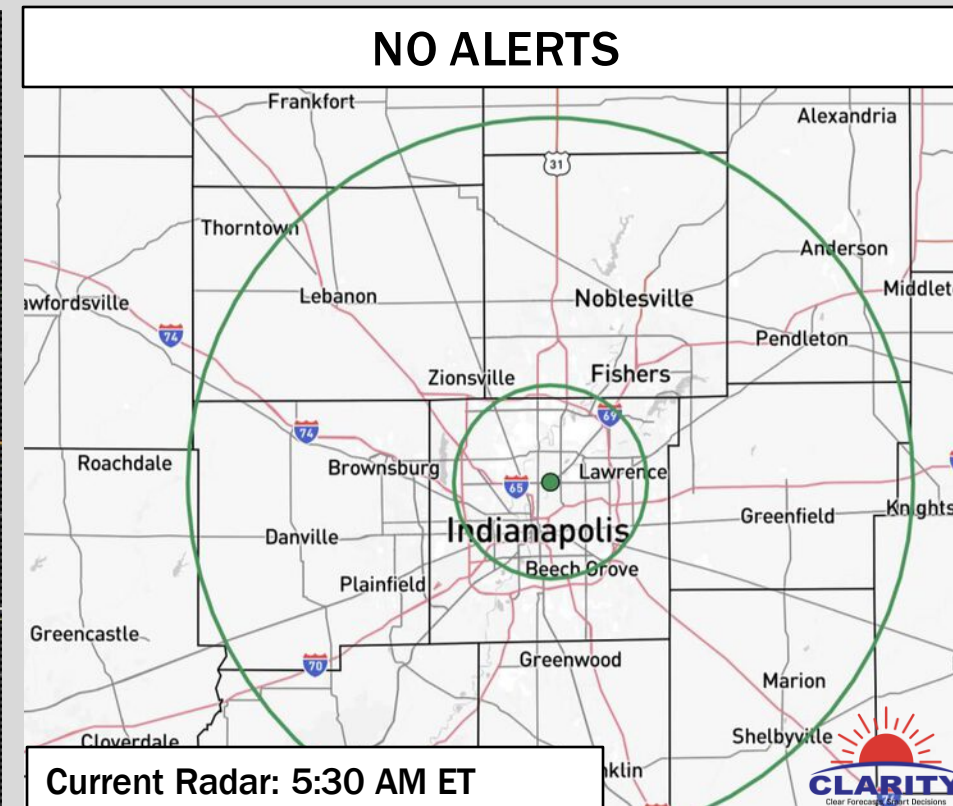
Forecaster: Elliott



## Hour by Hour Forecast:



## Hazardous Weather Alerts:



## Friday, August 8, 2025: IMPORTANT FORECAST NOTES

### Precipitation:

- ✓ Favoring dry conditions today.
- ✓ Between 2 - 5 PM, there is an incredibly low-end risk for an isolated pop up shower, however seeing one of these cells at the ISF is unlikely.
- ✓ At this time, we are not favoring a risk for lightning.

### Temperatures:

- ✓ Expecting temperatures to reach back into the mid to upper 80's F after 1PM, with heat indices easily reaching 90 by 1PM.
- ✓ Watching potential for heat indices to max out near 95 tomorrow around ~4-5PM.

### Wind/Clouds:

- ✓ Variable winds will begin to blow out of the SE by 9 AM. This will continue until 8 PM before winds calm and become variable the rest of the PM.
- ✓ Speeds will remain at 3 - 8 MPH.
- ✓ Mostly sunny skies are expected throughout the day today.

# INDIANA STATE FAIR

Friday, August 8, 2025

6 AM ET Weather Forecast



## 10-Day Forecast

BAMwx 10 Day		Fri 8/8	Sat 8/9	Sun 8/10	Mon 8/11	Tue 8/12	Wed 8/13	Thu 8/14	Fri 8/15	Sat 8/16	Sun 8/17
Sky Condition											
Low Hi		70° 91°	72° 91°	71° 91°	72° 90°	73° 88°	71° 87°	70° 87°	71° 90°	72° 91°	73° 89°
Wind		↗ 4 mph gusts 12	↗ 5 mph gusts 14	↗ 4 mph gusts 12	↗ 4 mph gusts 12	↗ 4 mph gusts 12	↗ 3 mph gusts 10	↗ 3 mph gusts 9	↗ 3 mph gusts 9	↗ 3 mph gusts 11	↗ 3 mph gusts 10
Precipitation	Confidence / Trend ①	<div><div>1</div><div>—</div></div>	<div><div>1</div><div>—</div></div>	<div><div>5</div><div>—</div></div>	<div><div>2</div><div>—</div></div>	<div><div>2</div><div>↑</div></div>	<div><div>2</div><div>—</div></div>	<div><div>2</div><div>—</div></div>	<div><div>5</div><div>—</div></div>	<div><div>5</div><div>—</div></div>	<div><div>5</div><div>—</div></div>
	Day %	10%	20%	0%	20%	30%	30%	20%	0%	0%	0%
	Night %	10%	0%	0%	20%	40%	30%	20%	0%	0%	0%
	Min	0	0	0	0	0.01	0	0	0	0	0
	Likely	0	0.1	0	0	0.2	0.05	0.04	0	0	0
	Max	0.03	0.25	0	0.31	0.6	0.4	0.29	0	0	0
	Snow %	0%	0%	0%	0%	0%	0%	0%	0%	0%	0%
	Snow	0	0	0	0	0	0	0	0	0	0
	Ice %	0%	0%	0%	0%	0%	0%	0%	0%	0%	0%
	Ice	0	0	0	0	0	0	0	0	0	0
RH %		67%	67%	67%	69%	75%	79%	78%	76%	76%	75%