

Houston Pilots Forecast Package

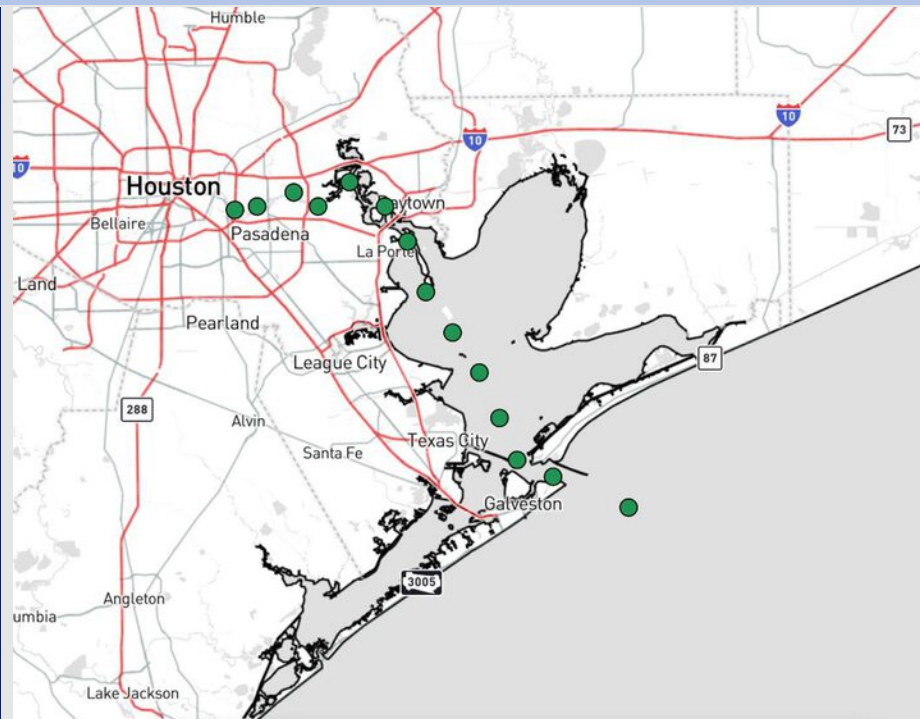


Updated: 1:15 PM CT
Tuesday, July 1, 2025

Forecaster: Lydia Purlee

Weather Headlines

- Pop-up storms for Stations N of Morgan's Point today from 3 – 7 PM. **Some storms may have heavy downpours, lightning, and wind gusts of up to 30 kts.**
- Dry conditions expected to return Thursday.
- No tropical impacts favored for Houston over the next 7 days.



Current Radar: 1:15 PM CT

As always, please do not hesitate to reach out to us with any forecast questions at **(317)-560-8122**. **Press 1 for forecast questions.**

You can also access real-time forecast updates and 24/7 meteorological chat assistance on your **Clarity** app. Click [here](#) for login assistance.

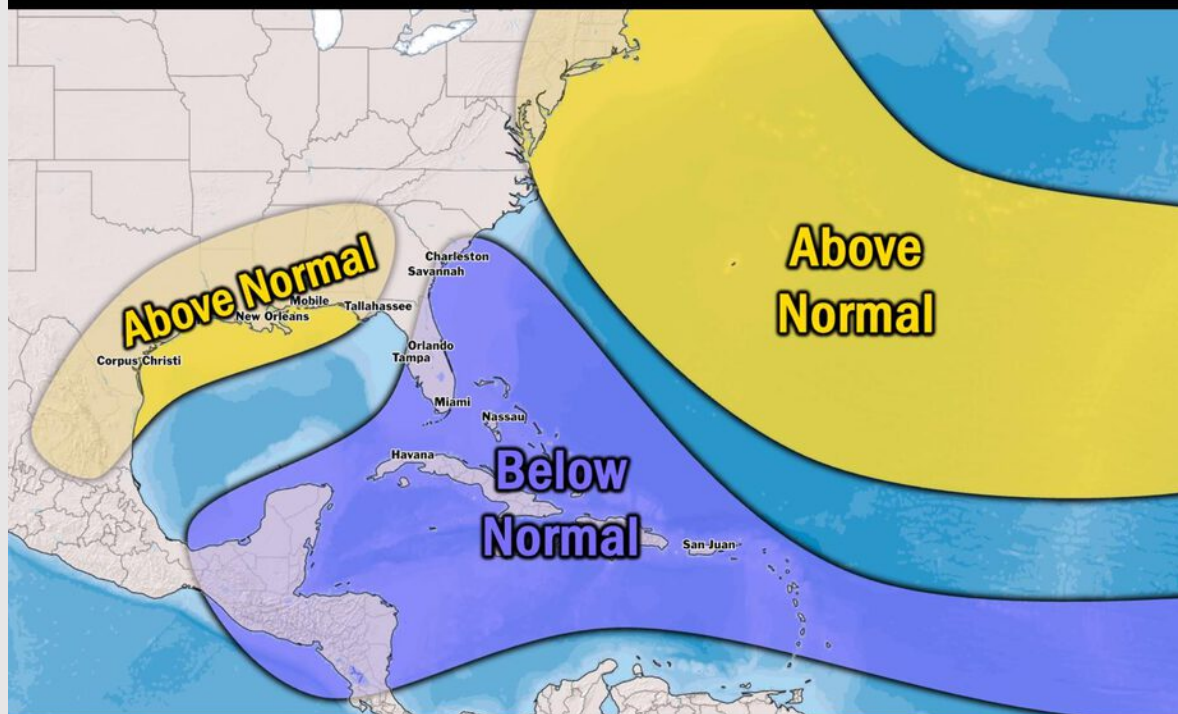


Houston Pilots Tropical Update

Seasonal Hurricane Outlook

2025 HURRICANE SEASON

Updated Issued: Wednesday, June 25, 2025



KEY SEASON NOTES

15 - 19

Named Storms
10 Year Avg: 17.8

6 - 9

Hurricanes
10 Year Avg: 8.2

2 - 4

Major Hurricanes
10 Year Avg: 3.8

Graphic to the left represents our favored seasonal outlook for the 2025 Hurricane Season. Conditions expected to be more favorable for tropical development within the Gulf this season.

No notable tropical development is expected over the next 7 days.

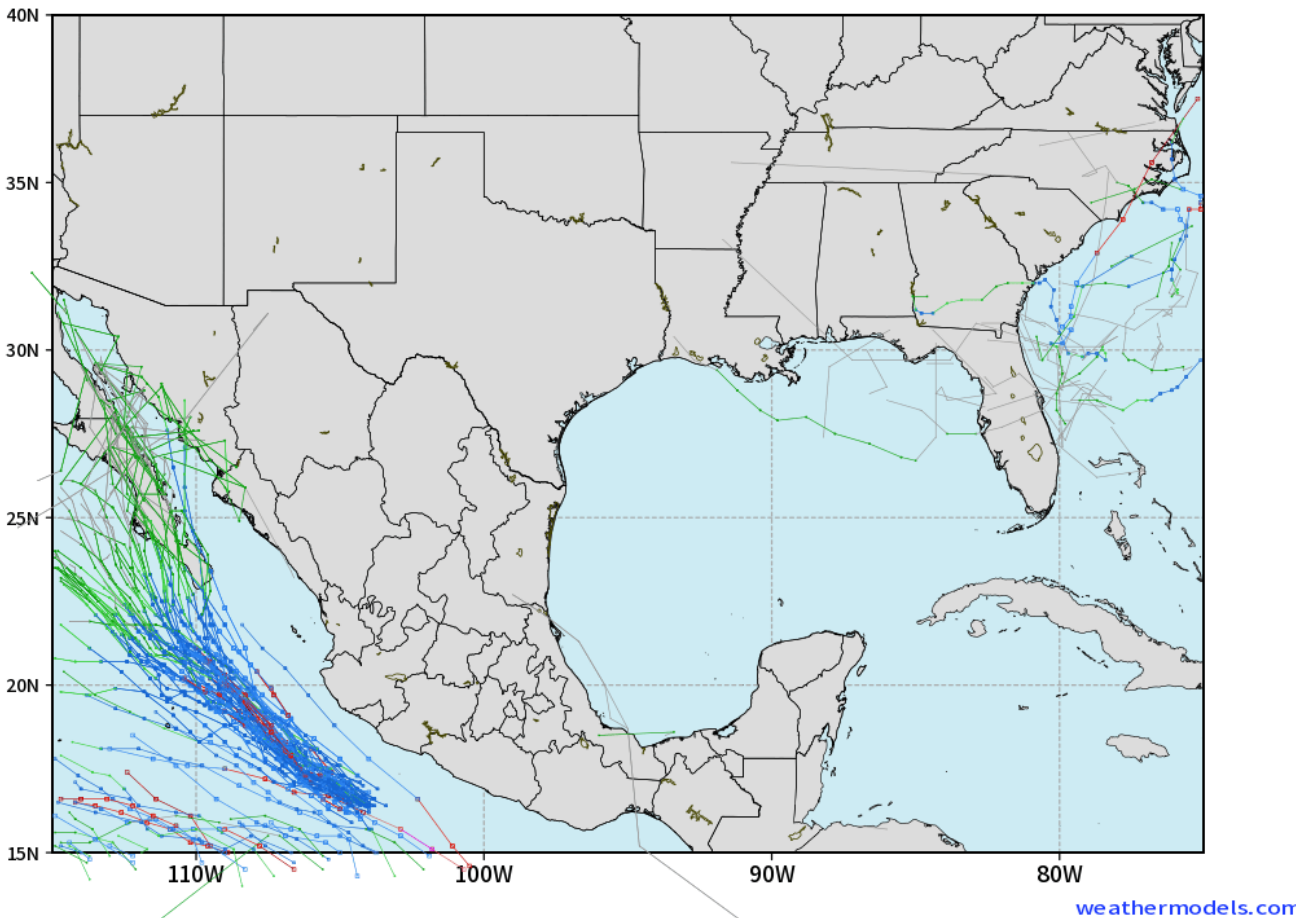
[Click here for the video!](#)

Houston Pilots Tropical Update

10 Day Tropical Outlook

ECMWF GULF EPS Cyclone Locations --> Next [10-days]
INIT: 00Z01JUL2025 --> UNTIL 00Z11JUL2025

o-o ENSEMBLE MEAN
o-o 1000 - 1010 hPa
o-o 980 - 999 hPa
o-o 960 - 979 hPa
o-o 950 - 959 hPa
o-o < 950 hPa



Tropical Storm development is possible in the eastern part of the Gulf late this week but is not favored to make any impacts on the Houston area.

At this time, we are not favoring any tropical impacts for Houston over the next 7 days.

Houston Pilots Visibility Chart (miles)



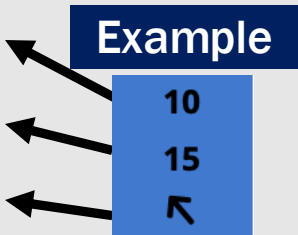
Visibility	Tue 3 pm	Tue 4 pm	Tue 5 pm	Tue 6 pm	Tue 7 pm	Tue 8 pm	Tue 9 pm	Tue 10 pm	Tue 11 pm	Wed 12 am	Wed 1 am	Wed 2 am	Wed 3 am	Wed 4 am	Wed 5 am	Wed 6 am	Wed 7 am	Wed 8 am	Wed 9 am	Wed 10 am	Wed 11 am	Wed 12 pm	Wed 1 pm	Wed 2 pm
Houston Pilots N - 610 Bridge	10	10	10	10	10	10	10	10	10	10	10	10	10	10	10	10	10	6.9	10	10	10	10	10	10
Houston Pilots M - Kinder 1	10	10	10	10	10	10	10	10	10	10	10	10	10	10	10	10	10	6.9	10	10	10	10	10	10
Houston Pilots L - Greens Bayou	10	10	10	10	10	10	10	10	10	10	10	10	10	10	10	10	10	6.9	10	10	10	10	10	10
Houston Pilots K - Shell Crude	10	10	10	10	10	10	10	10	10	10	10	10	10	10	10	10	10	6.9	10	10	10	10	10	10
Houston Pilots J - Lynchburg Ferries	10	10	10	10	10	10	10	10	10	10	10	10	10	10	10	10	10	6.9	10	10	10	10	10	10
Houston Pilots I - Exxon 3	10	10	10	10	10	10	10	10	10	10	10	10	10	10	10	10	10	6.9	10	10	10	10	10	10
Houston Pilots H - Morgans Point	10	10	10	10	10	10	10	10	10	10	10	10	10	10	10	10	10	6.9	10	10	10	10	10	10
Houston Pilots G - 75/76	10	10	10	10	10	10	10	10	10	10	10	10	10	10	10	10	10	7.9	10	10	10	10	10	10
Houston Pilots F - 63/64	10	10	10	10	10	10	10	10	10	10	10	10	10	10	10	10	10	7.9	10	10	10	10	10	10
Houston Pilots E - 51/52	10	10	10	10	10	10	10	10	10	10	10	10	10	10	10	10	10	9	10	10	10	10	10	10
Houston Pilots D - 37/38	10	10	10	10	10	10	10	10	10	10	10	10	10	10	10	10	10	9	10	10	10	10	10	10
Houston Pilots C - 25/26	10	10	10	10	10	10	10	10	10	10	10	10	10	10	10	10	10	10	10	10	10	10	10	10
Houston Pilots B - 11/12	10	10	10	10	10	10	10	10	10	10	10	10	10	10	10	10	10	10	10	10	10	10	10	10
Houston Pilots A - 1 & 2 Bravo	10	10	10	10	10	10	10	10	10	10	10	10	10	10	10	10	10	10	10	10	10	10	10	10

NOTE: This is automated data that may/may not agree with the official BAM thinking that's found on the daily slides or special visibility report slides. This data should be used as a guide only

Houston Pilots Wind Chart



Sustained Wind 10 Knots
Gusts 15 Knots
Wind from the SE



Wind	Tue 3 pm	Tue 4 pm	Tue 5 pm	Tue 6 pm	Tue 7 pm	Tue 8 pm	Tue 9 pm	Tue 10 pm	Tue 11 pm	Wed 12 am	Wed 1 am	Wed 2 am	Wed 3 am	Wed 4 am	Wed 5 am	Wed 6 am	Wed 7 am	Wed 8 am	Wed 9 am	Wed 10 am	Wed 11 am	Wed 12 pm	Wed 1 pm	Wed 2 pm
Houston Pilots N - 610 Bridge	3 8 ↗	5 9 ↗	5 9 ↖	6 10 ↑	6 12 ↑	6 12 ↑	6 12 ↑	6 9 ↗	6 9 ↗	5 9 ↗	3 9 ↗	3 8 ↗	3 8 ↗	3 7 ↗	3 7 ↗	2 6 ↗	2 6 ↗	2 5 ↗	2 5 ↗	2 5 →	3 6 →	3 7 →	3 7 →	5 8 ↗
Houston Pilots M - Kinder 1	3 8 ↑	5 9 ↑	6 9 ↖	6 10 ↑	6 12 ↑	6 12 ↑	6 12 ↑	6 9 ↗	5 9 ↗	5 9 ↗	3 9 ↗	3 8 ↗	3 8 ↗	3 7 ↗	3 7 ↗	2 6 ↗	2 6 ↗	2 5 ↗	2 5 ↗	2 5 →	3 6 →	3 7 →	3 7 →	5 8 ↗
Houston Pilots L - Greens Bayou	3 9 ↖	5 9 ↖	6 9 ↑	6 10 ↑	6 12 ↑	6 12 ↑	6 10 ↑	5 9 ↗	5 9 ↗	5 9 ↗	3 8 ↗	3 8 ↗	3 7 ↗	3 7 ↗	3 7 ↗	2 6 ↗	2 5 ↗	2 5 ↗	2 5 ↗	2 5 →	3 6 →	3 7 →	3 7 →	5 8 ↗
Houston Pilots K - Shell Crude	5 9 ↖	6 9 ↖	6 10 ↑	6 12 ↑	6 12 ↑	6 12 ↑	6 10 ↑	5 9 ↗	5 9 ↗	5 9 ↗	3 8 ↗	3 8 ↗	3 7 ↗	3 7 ↗	3 7 ↗	2 6 ↗	2 5 ↗	2 5 ↗	1 5 ↗	2 5 →	2 6 →	3 7 →	3 8 →	5 8 ↗
Houston Pilots J - Lynchburg Ferries	3 9 ↖	5 9 ↖	6 10 ↑	6 10 ↑	6 12 ↑	6 13 ↑	6 12 ↑	5 9 ↗	5 9 ↗	3 8 ↗	3 8 ↗	3 8 ↗	3 7 ↗	3 6 ↗	2 7 ↗	2 6 ↗	2 5 ↗	1 5 ↗	1 5 ↗	1 5 →	2 6 →	3 7 →	3 8 →	5 8 ↗
Houston Pilots I - Exxon 3	6 10 ↖	7 12 ↖	8 13 ↖	8 14 ↑	9 13 ↑	10 15 ↑	9 14 ↑	8 13 ↑	8 13 ↑	8 12 ↑	8 10 ↑	7 12 ↑	6 9 ↑	6 9 ↑	6 8 ↑	6 7 ↑	5 7 ↑	5 7 ↑	3 6 ↑	3 7 ↑	3 7 ↑	5 7 ↑	5 9 ↑	6 10 ↑
Houston Pilots H - Morgans Point	6 10 ↖	7 13 ↖	8 13 ↖	8 14 ↑	9 14 ↑	10 15 ↑	9 14 ↑	8 13 ↑	8 13 ↑	8 12 ↑	8 10 ↑	7 12 ↑	6 9 ↑	6 9 ↑	6 8 ↑	6 7 ↑	5 7 ↑	5 7 ↑	3 6 ↑	3 7 ↑	3 7 ↑	5 7 ↑	5 9 ↑	6 10 ↑
Houston Pilots G - 75/76	6 12 ↖	7 13 ↖	8 14 ↖	8 15 ↑	10 15 ↑	10 15 ↑	10 15 ↑	10 14 ↑	9 14 ↑	9 13 ↑	8 12 ↑	8 13 ↑	8 10 ↑	7 10 ↑	7 10 ↑	6 9 ↑	6 8 ↑	6 8 ↑	5 7 ↑	5 7 ↑	5 8 ↑	5 8 ↑	6 10 ↑	6 12 ↑
Houston Pilots F - 63/64	6 12 ↖	7 13 ↖	8 14 ↖	9 15 ↑	10 15 ↑	10 15 ↑	10 15 ↑	10 14 ↑	9 14 ↑	9 13 ↑	8 12 ↑	8 13 ↑	8 10 ↑	7 10 ↑	7 10 ↑	6 9 ↑	6 8 ↑	6 8 ↑	5 7 ↑	5 7 ↑	5 8 ↑	5 8 ↑	6 10 ↑	6 10 ↑
Houston Pilots E - 51/52	6 12 ↖	7 13 ↖	8 14 ↖	8 14 ↑	9 14 ↑	10 15 ↑	10 15 ↑	9 14 ↑	9 13 ↑	8 13 ↑	8 12 ↑	8 13 ↑	8 10 ↑	7 10 ↑	7 10 ↑	6 9 ↑	6 8 ↑	6 8 ↑	5 7 ↑	5 7 ↑	5 8 ↑	5 8 ↑	6 10 ↑	6 10 ↑
Houston Pilots D - 37/38	6 12 ↖	7 13 ↖	8 13 ↖	8 14 ↑	9 14 ↑	10 15 ↑	9 14 ↑	9 13 ↑	9 13 ↑	8 13 ↑	8 12 ↑	8 12 ↑	8 10 ↑	7 9 ↑	7 10 ↑	6 9 ↑	6 8 ↑	6 8 ↑	5 7 ↑	5 7 ↑	5 8 ↑	5 8 ↑	6 9 ↑	6 10 ↑
Houston Pilots C - 25/26	6 12 ↖	6 12 ↖	7 12 ↖	8 13 ↑	8 13 ↑	9 14 ↑	9 14 ↑	9 13 ↑	8 13 ↑	8 13 ↑	8 12 ↑	8 12 ↑	7 10 ↑	7 9 ↑	7 9 ↑	6 9 ↑	6 8 ↑	6 8 ↑	5 7 ↑	5 7 ↑	5 8 ↑	6 8 ↑	6 9 ↑	6 10 ↑
Houston Pilots B - 11/12	6 9 ↖	6 10 ↖	7 12 ↖	8 13 ↑	8 13 ↑	8 13 ↑	8 13 ↑	8 12 ↑	8 12 ↑	7 12 ↑	8 12 ↑	8 12 ↑	8 10 ↑	8 9 ↑	8 9 ↑	6 9 ↑	6 8 ↑	6 8 ↑	5 7 ↑	5 7 ↑	5 8 ↑	5 8 ↑	6 9 ↑	6 9 ↑
Houston Pilots A - 1 & 2 Bravo	5 9 ↖	6 10 ↖	7 10 ↖	8 13 ↑	8 13 ↑	8 14 ↑	9 14 ↑	9 13 ↑	9 13 ↑	8 13 ↑	8 12 ↑	8 13 ↑	8 12 ↑	8 12 ↑	8 12 ↑	7 10 ↑	7 9 ↑	7 9 ↑	6 8 ↑	6 8 ↑	5 7 ↑	5 7 ↑	5 8 ↑	5 8 ↑

NOTE: This is automated data that may/may not agree with the official BAM thinking that's found on the daily slides.
This data should be used as a guide only.

Houston Pilots: TUE. 7/1/2025

Forecast Discussion

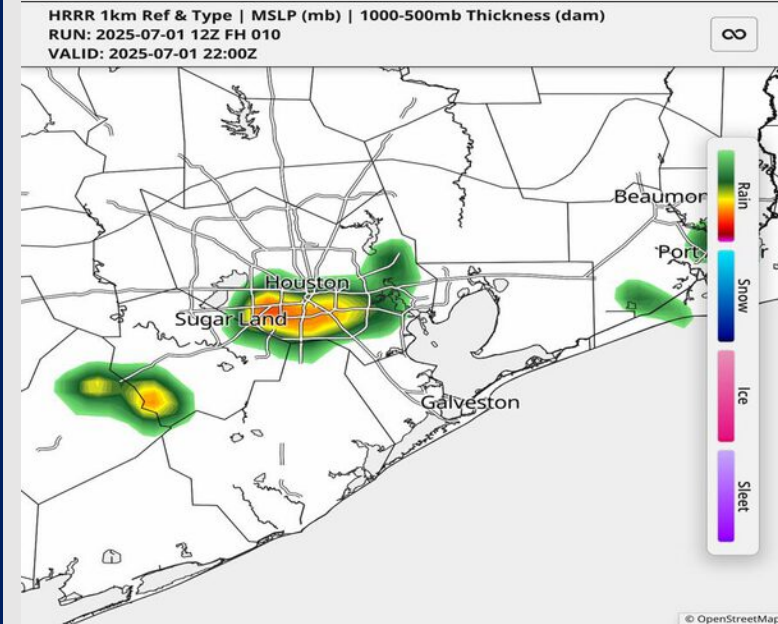
Precip: From 3 - 7 PM, there will be hit/miss pop-up storms N of Morgan's Point. **A risk of heavy downpours, lightning, and wind gusts of up to 30 MPH are favorable in these storms.**

Wind: Winds will be out of the SE until 5PM when the winds shift to blow from the SW. **N of Morgan's Point:** Winds will be at 2 – 8 kts. **S of Morgan's Point:** Winds will be 5 – 13 kts.

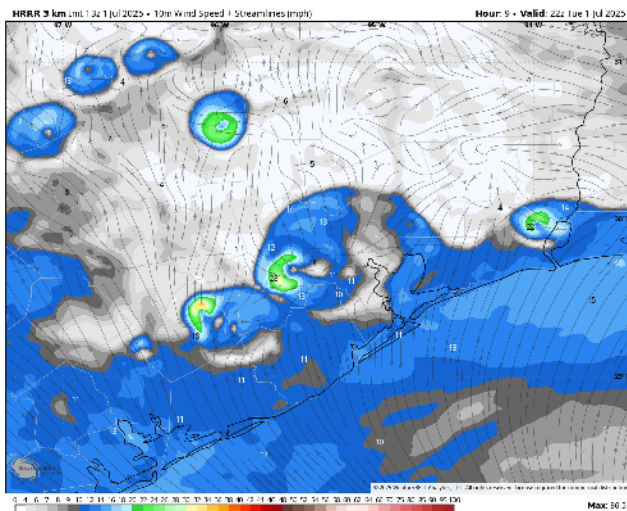
Low Temps: **N of Morgan's Point:** Mid 70s F. **S of Morgan's Point:** Low 80s F.

Visibility: No fog concerns, however, visibility may be reduced under a few downpours

Precip Image: 5 PM CT



**Wind Speed:
5 PM CT**



Houston Pilots: WED. 7/2/2025

Forecast Discussion

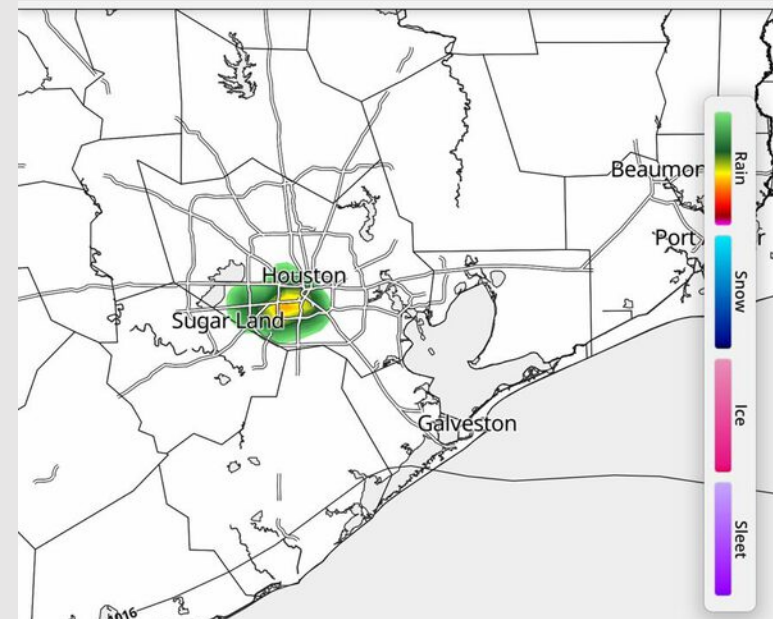
Precip: Dry conditions favored for all Stations on Wednesday until between 4 – 7PM where a few pop-up showers are possible N of Morgan's Station.

Wind: Winds will be out of the SW. **N of Morgan's Point:** Winds will be at 3 – 8 kts. **S of Morgan's Point:** Winds will be at 5 – 13 kts.

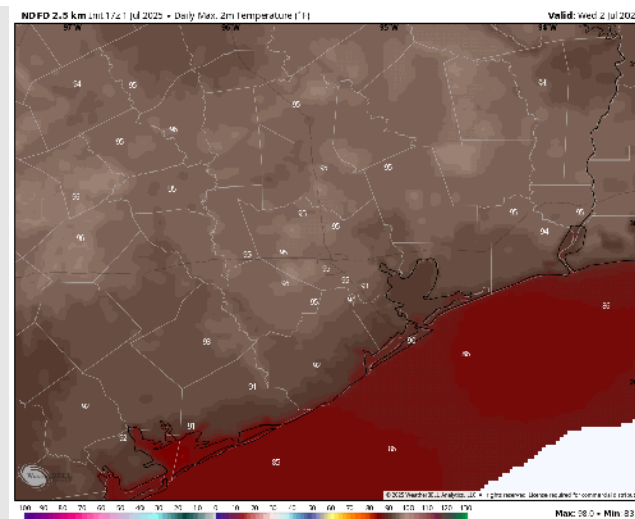
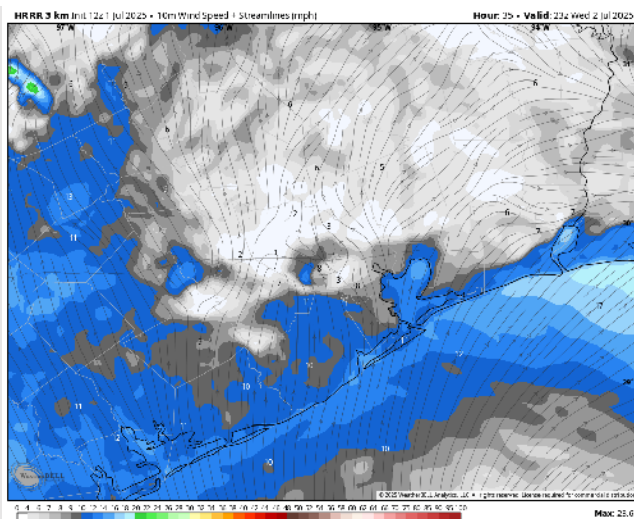
High Temps: **N of Morgan's Point:** Mid 90s F. **S of Morgan's Point:** High 80s F.

Visibility: No visibility concerns for Wednesday.

Precip Image: 7 PM CT



Wind Speed:
6 PM CT



High Temps
Wednesday

Houston Pilots: THU. 7/3/2025

Forecast Discussion

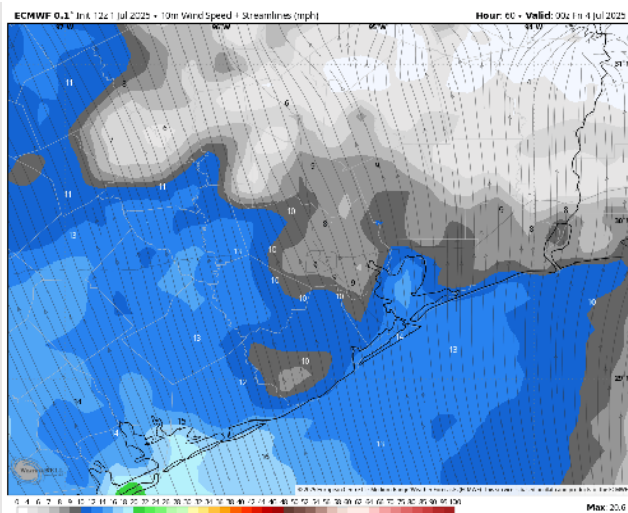
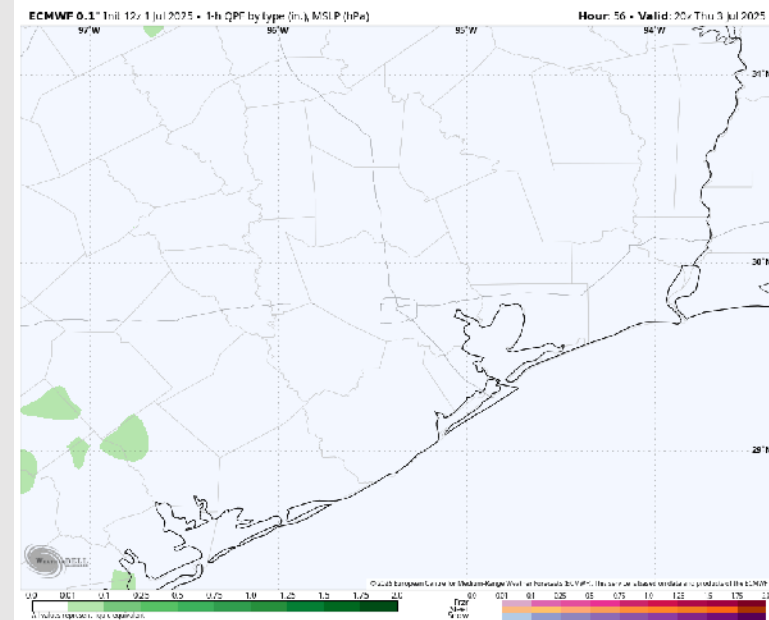
Precip: Favoring dry conditions for Thursday.

Wind: Winds will be out of the SW until around 10 AM when the winds shift to blow from the SE. **N of Morgan's Point:** Winds will be at 3 – 7 kts. **S of Morgan's Point:** Winds will be at 3 – 11 kts.

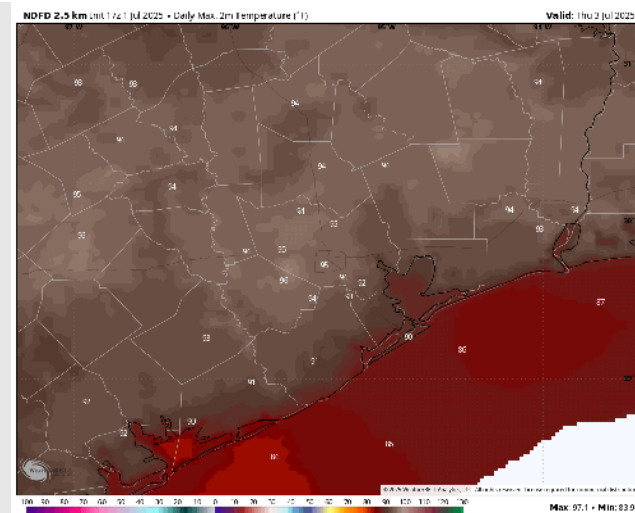
High Temps: **N of Morgan's Point:** Mid 90s F. **S of Morgan's Point:** High 80s F.

Visibility: No visibility concerns Thursday.

Precip Image: 3 PM CT



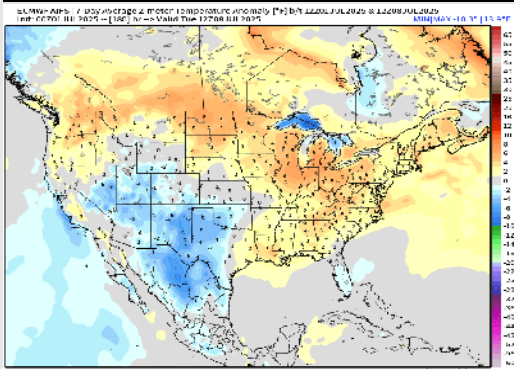
Wind Speed:
7 PM CT



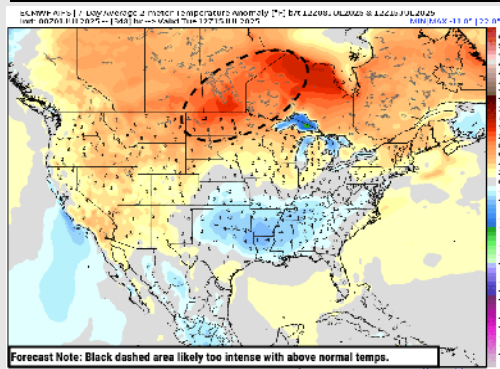
High Temps
Thursday

Houston Pilots: 7/1/25

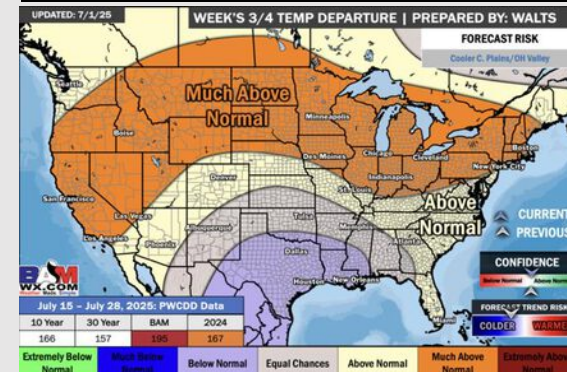
Next 7 Day Temperature Departure



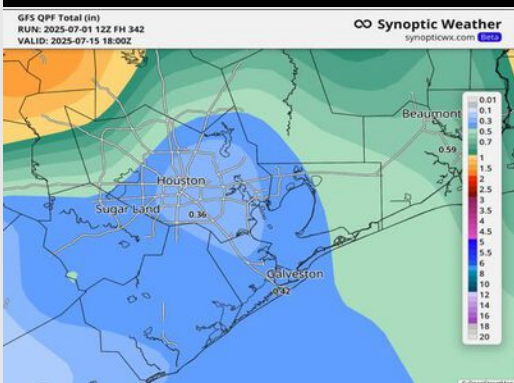
8-14 Day Temperature Departure



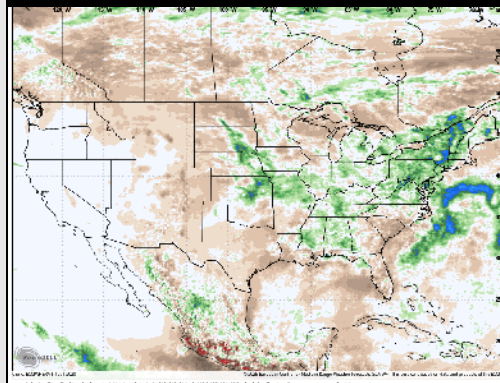
15-30 Day Temperature Departure



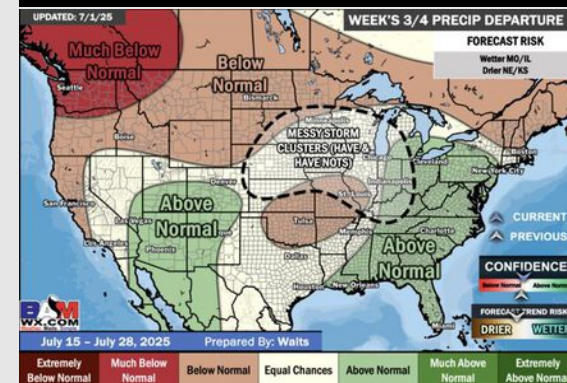
Next 7 Day Total Precipitation



8-14 Day % of Average Precip.



15-30 Day % of Average Precip.



- Temps are expected to be slightly above normal the next 7 days. Scattered rain chances expected through mid-week, with dry conditions following.
- Near normal temps and lower than average rain chances are favored for days 8 – 14.
- Below normal temperatures are favored into late July along with near normal rainfall chances.