

# Houston Pilots Forecast Package



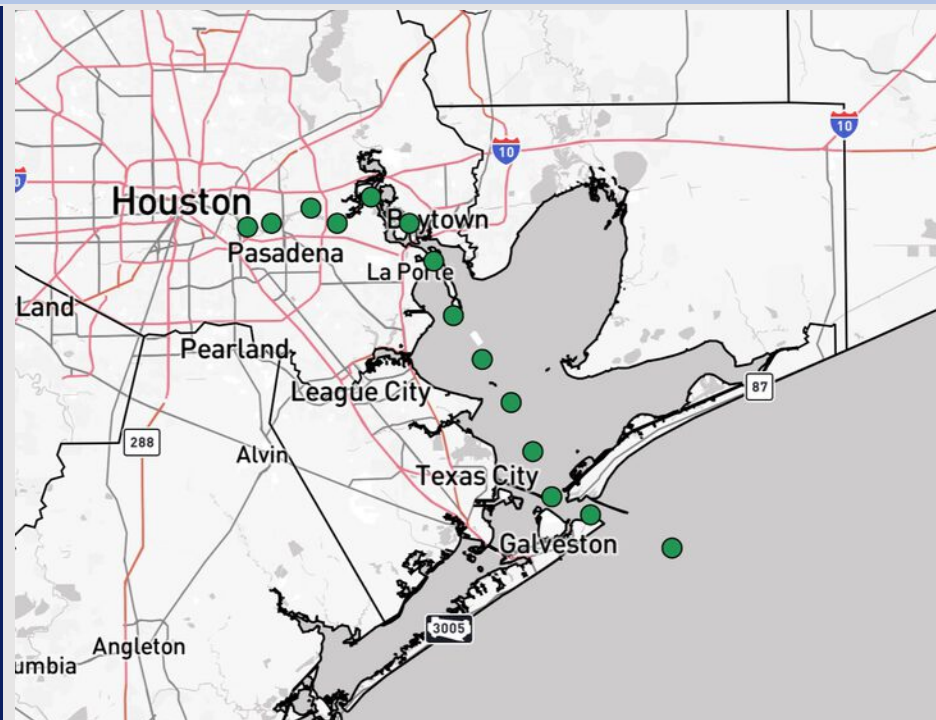
Updated: 10:15 PM CT

Sunday, July 27, 2025

Forecaster: Jakeb Wagner

## Weather Headlines

- Isolated showers/storms (20%) will be possible today from 4AM to 10AM for all stations and from 2PM - 7PM for stations N of Morgan's Point.
- Favoring dry conditions Tuesday and Wednesday.
- No tropical development favored over the next 10 days.



Current Radar: 10:15 PM CT

As always, please do not hesitate to reach out to us with any forecast questions at **(317)-560-8122**. Press 1 for forecast questions.

You can also access real-time forecast updates and 24/7 meteorological chat assistance on your **Clarity** app. Click [here](#) for login assistance.

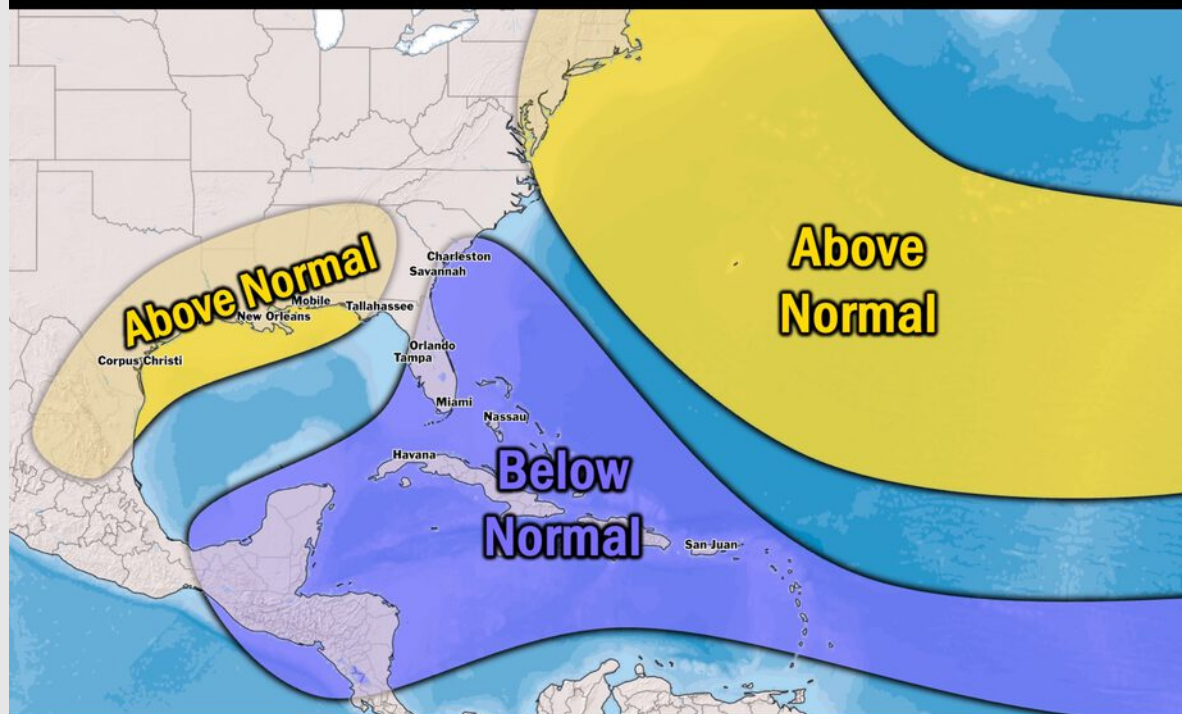


# Houston Pilots Tropical Update

## Seasonal Hurricane Outlook

### 2025 HURRICANE SEASON

Updated Issued: Wednesday, June 25, 2025



#### KEY SEASON NOTES

**15 - 19**

Named Storms  
10 Year Avg: 17.8

**6 - 9**

Hurricanes  
10 Year Avg: 8.2

**2 - 4**

Major Hurricanes  
10 Year Avg: 3.8

Graphic to the left represents our favored seasonal outlook for the 2025 Hurricane Season. Conditions expected to be more favorable for tropical development within the Gulf this season.

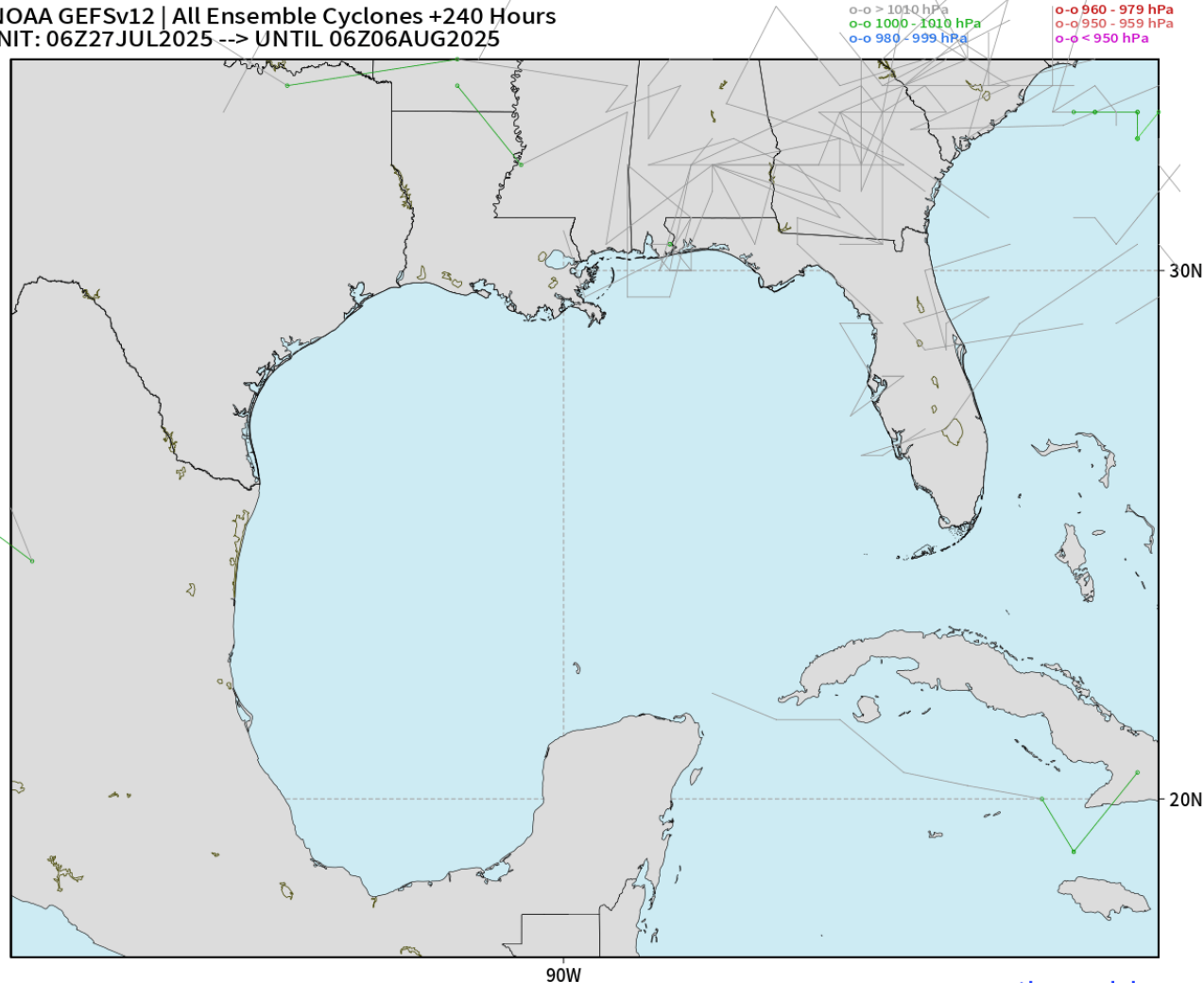
No notable tropical development is expected over the next 7 days.

[Click here for the video!](#)

# Houston Pilots Tropical Update

## 10-Day Tropical Outlook

NOAA GEFSv12 | All Ensemble Cyclones +240 Hours  
INIT: 06Z27JUL2025 --> UNTIL 06Z06AUG2025



**No tropical  
development  
favored over  
the next 10  
days.**

# Houston Pilots Visibility Chart (miles)



Visibility	Mon 12 am	Mon 1 am	Mon 2 am	Mon 3 am	Mon 4 am	Mon 5 am	Mon 6 am	Mon 7 am	Mon 8 am	Mon 9 am	Mon 10 am	Mon 11 am	Mon 12 pm	Mon 1 pm	Mon 2 pm	Mon 3 pm	Mon 4 pm	Mon 5 pm	Mon 6 pm	Mon 7 pm	Mon 8 pm	Mon 9 pm	Mon 10 pm	Mon 11 pm
Houston Pilots N - 610 Bridge	10	10	10	10	10	10	10	10	6.9	10	10	10	10	10	10	10	10	10	10	10	10	10	10	10
Houston Pilots M - Kinder 1	10	10	10	10	10	10	10	10	8	10	10	10	10	10	10	10	10	10	10	10	10	10	10	10
Houston Pilots L - Greens Bayou	10	10	10	10	10	10	10	10	8	10	10	10	10	10	10	10	10	10	10	10	10	10	10	10
Houston Pilots K - Shell Crude	10	10	10	10	10	10	10	10	8	10	10	10	10	10	10	10	10	10	10	10	10	10	10	10
Houston Pilots J - Lynchburg Ferries	10	10	10	10	10	10	10	10	6.9	10	10	10	10	10	10	10	10	10	10	10	10	10	10	10
Houston Pilots I - Exxon 3	10	10	10	10	10	10	10	10	8	10	10	10	10	10	10	10	10	10	10	10	10	10	10	10
Houston Pilots H - Morgans Point	10	10	10	10	10	10	10	10	8	10	10	10	10	10	10	10	10	10	10	10	10	10	10	10
Houston Pilots G - 75/76	10	10	10	10	10	10	10	10	10	10	10	10	10	10	10	10	10	10	10	10	10	10	10	10
Houston Pilots F - 63/64	10	10	10	10	10	10	10	10	10	10	10	10	10	10	10	10	10	10	10	10	10	10	10	10
Houston Pilots E - 51/52	10	10	10	10	10	10	10	10	10	10	10	10	10	10	10	10	10	10	10	10	10	10	10	10
Houston Pilots D - 37/38	10	10	10	10	10	10	10	10	10	10	10	10	10	10	10	10	10	10	10	10	10	10	10	10
Houston Pilots C - 25/26	10	10	10	10	10	10	10	10	10	10	10	10	10	10	10	10	10	10	10	10	10	10	10	10
Houston Pilots B - 11/12	10	10	10	10	10	10	10	10	10	10	10	10	10	10	10	10	10	10	10	10	10	10	10	10
Houston Pilots A - 1 & 2 Bravo	10	10	10	10	10	10	10	10	10	10	10	10	10	10	10	10	10	10	10	10	10	10	10	10

NOTE: This is automated data that may/may not agree with the official BAM thinking that's found on the daily slides or special visibility report slides. This data should be used as a guide only

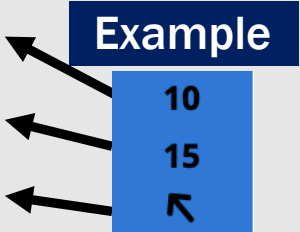
# Houston Pilots Wind Chart



**Sustained Wind 10 Knots**

**Gusts 15 Knots**

**Wind from the SE**



Wind	Mon 12 am	Mon 1 am	Mon 2 am	Mon 3 am	Mon 4 am	Mon 5 am	Mon 6 am	Mon 7 am	Mon 8 am	Mon 9 am	Mon 10 am	Mon 11 am	Mon 12 pm	Mon 1 pm	Mon 2 pm	Mon 3 pm	Mon 4 pm	Mon 5 pm	Mon 6 pm	Mon 7 pm	Mon 8 pm	Mon 9 pm	Mon 10 pm	Mon 11 pm
Houston Pilots N - 610 Bridge	3 8 ↗	3 7 ↗	3 7 ↗	2 7 ↗	2 6 ↗	2 6 ↑	1 5 ↑	1 5 ↘	1 5 ↓	1 3 ←	1 5 ↗	2 6 ↗	3 6 ↗	3 7 ↗	3 7 ↗	3 9 ↗	3 9 ↗	5 10 ↑	5 10 ↑	6 12 ↑	6 12 ↑	6 12 ↑	5 10 ↑	5 9 ↑
Houston Pilots M - Kinder 1	3 8 ↗	3 7 ↗	3 7 ↗	2 7 ↗	2 6 ↗	2 6 ↑	1 5 ↑	1 5 ↘	1 3 ↓	1 3 ←	1 5 ↗	2 6 ↗	3 6 ↗	3 7 ↗	3 7 ↗	3 9 ↗	3 9 ↗	5 10 ↑	6 10 ↑	6 12 ↑	6 12 ↑	6 12 ↑	5 10 ↑	5 9 ↑
Houston Pilots L - Greens Bayou	3 8 ↗	3 7 ↗	3 6 ↗	2 6 ↗	2 6 ↑	2 5 ↑	1 5 ↘	1 3 ↓	1 3 ↓	1 3 ↓	1 3 ↗	2 6 ↗	3 6 ↑	3 7 ↑	3 8 ↗	3 9 ↗	5 10 ↗	5 10 ↗	5 10 ↑	6 12 ↑	6 12 ↑	6 12 ↑	5 10 ↑	3 9 ↑
Houston Pilots K - Shell Crude	3 8 ↗	3 7 ↗	3 7 ↗	2 6 ↗	2 6 ↑	2 5 ↑	1 5 ↘	1 3 ↓	1 3 ↓	1 3 ↓	1 3 ↗	2 6 ↗	3 6 ↑	3 7 ↑	3 8 ↗	5 9 ↗	5 10 ↗	6 10 ↗	6 10 ↑	6 12 ↑	6 12 ↑	6 12 ↑	5 10 ↑	3 9 ↑
Houston Pilots J - Lynchburg Ferries	3 8 ↗	3 7 ↗	2 6 ↗	2 6 ↗	1 5 ↗	1 5 ↗	1 3 ←	1 3 ↓	1 3 ↓	1 2 ↓	1 3 ↗	1 5 ↗	3 6 ↑	3 7 ↑	3 8 ↗	5 9 ↗	5 10 ↗	6 10 ↗	6 10 ↑	6 12 ↑	6 12 ↑	5 12 ↑	5 9 ↑	3 8 ↑
Houston Pilots I - Exxon 3	8 12 ↗	8 12 ↗	7 9 ↗	6 9 ↗	6 8 ↑	6 7 ↑	5 7 ↑	3 6 ↘	3 6 →	3 6 ↘	3 6 ↘	3 7 ↑	3 7 ↑	5 9 ↗	6 10 ↗	6 12 ↗	7 13 ↗	8 13 ↗	8 13 ↗	9 13 ↑	10 14 ↑	9 13 ↑	8 13 ↑	8 12 ↑
Houston Pilots H - Morgans Point	8 13 ↗	8 12 ↗	8 10 ↗	7 9 ↗	6 8 ↑	6 8 ↑	5 7 ↑	3 6 ↘	3 6 ↘	3 6 ↘	3 6 ↘	3 7 ↑	3 7 ↑	5 9 ↗	6 10 ↗	7 12 ↗	7 13 ↗	8 13 ↗	8 13 ↗	9 13 ↑	10 14 ↑	9 13 ↑	8 13 ↑	8 12 ↑
Houston Pilots G - 75/76	10 15 ↗	9 14 ↑	8 13 ↑	8 12 ↑	8 10 ↑	7 9 ↑	6 8 ↑	6 8 ↗	5 7 ↗	5 7 ↘	3 7 ↘	3 7 ↘	3 8 ↗	5 9 ↗	6 10 ↗	6 13 ↗	7 13 ↗	8 14 ↗	8 14 ↗	9 14 ↑	10 15 ↑	9 13 ↑	9 13 ↑	8 13 ↑
Houston Pilots F - 63/64	10 15 ↗	9 14 ↑	9 13 ↑	8 12 ↑	8 10 ↑	7 9 ↑	6 8 ↑	6 8 ↗	6 7 ↗	5 7 ↘	3 7 ↘	3 7 ↘	3 8 ↗	3 9 ↗	6 10 ↗	6 12 ↗	7 13 ↗	8 14 ↗	8 13 ↗	9 13 ↑	10 15 ↑	9 13 ↑	9 13 ↑	8 12 ↑
Houston Pilots E - 51/52	10 15 ↗	9 14 ↑	9 13 ↑	8 13 ↑	8 12 ↑	8 10 ↑	7 9 ↑	6 8 ↑	6 8 ↗	5 7 ↘	5 7 ↘	5 7 ↘	3 8 ↗	5 9 ↗	5 9 ↗	6 12 ↗	7 13 ↗	8 13 ↗	8 13 ↑	8 13 ↑	9 14 ↑	9 13 ↑	8 13 ↑	8 12 ↑
Houston Pilots D - 37/38	10 15 ↗	9 14 ↑	9 13 ↑	8 13 ↑	8 12 ↑	8 10 ↑	7 9 ↑	6 8 ↑	6 8 ↗	5 7 ↘	5 7 ↘	5 7 ↘	5 8 ↗	5 9 ↗	5 9 ↗	6 10 ↗	6 12 ↗	7 13 ↗	8 12 ↗	8 13 ↑	9 14 ↑	9 13 ↑	8 13 ↑	8 12 ↑
Houston Pilots C - 25/26	9 14 ↗	9 14 ↑	9 13 ↑	8 13 ↑	8 12 ↑	8 10 ↑	7 9 ↑	6 8 ↑	6 8 ↗	5 7 ↘	5 7 ↘	5 7 ↘	5 8 ↗	5 8 ↗	6 9 ↗	6 10 ↗	6 12 ↗	7 12 ↗	7 12 ↑	8 13 ↑	8 13 ↑	8 13 ↑	8 12 ↑	8 10 ↑
Houston Pilots B - 11/12	8 14 ↗	8 14 ↑	8 13 ↑	7 12 ↑	7 12 ↑	6 10 ↑	6 9 ↑	5 8 ↑	5 8 ↗	3 7 ↘	3 7 ↘	5 8 ↑	5 8 ↑	5 9 ↑	5 9 ↑	6 10 ↑	6 10 ↑	6 12 ↑	6 10 ↑	7 13 ↑	8 12 ↑	7 12 ↑	6 12 ↑	6 10 ↑
Houston Pilots A - 1 & 2 Bravo	10 15 ↗	10 15 ↑	10 14 ↑	9 14 ↑	8 13 ↑	8 13 ↑	8 10 ↑	7 9 ↑	6 8 ↑	6 8 ↑	5 7 ↑	3 7 ↑	3 7 ↑	3 8 ↑	3 7 ↑	3 8 ↑	5 9 ↑	6 10 ↑	6 10 ↑	7 12 ↑	8 12 ↑	8 12 ↑	7 12 ↑	7 10 ↑

**NOTE: This is automated data that may/may not agree with the official BAM thinking that's found on the daily slides.**

**This data should be used as a guide only.**



# Houston Pilots: MON. 7/28/2025

## Forecast Discussion

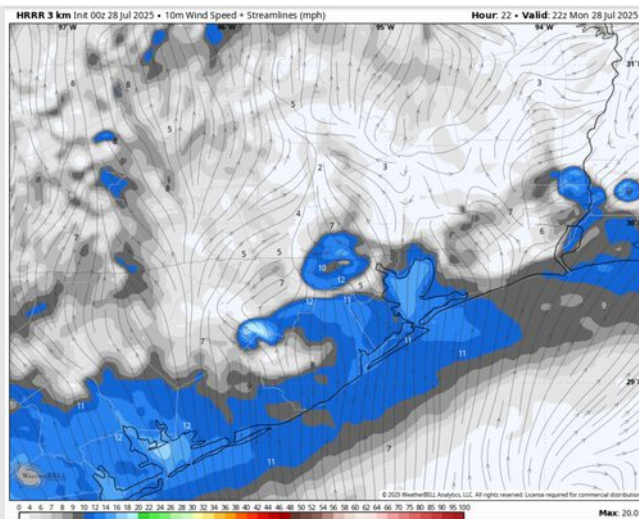
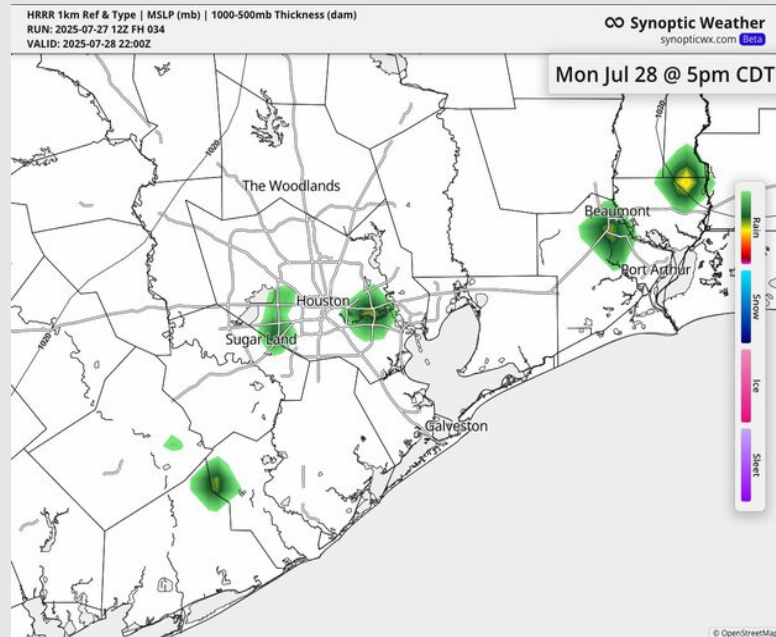
**Precip:** Isolated showers/storms (20%) will be possible from 4AM to 10AM for all stations and from 2PM - 7PM for stations N of Morgan's Point.

**Wind:** Winds will be variable through 2PM before settling out of the SW. **N of Morgan's Point:** Winds will be at 4 – 9 kts. **S of Morgan's Point:** Winds will be at 2 - 7 kts through 2 PM then will increase to 5 – 10 kts the rest of the day.

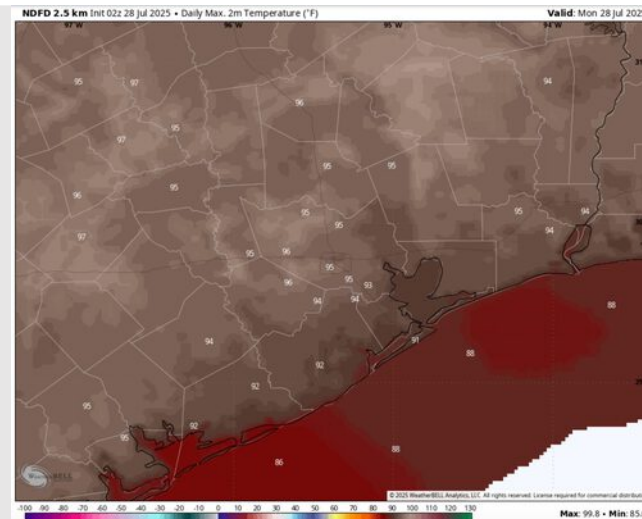
**High Temps:** **N of Morgan's Point:** Mid 90s F. **S of Morgan's Point:** Upper 80s/Near 90 F.

**Visibility:** No visibility concerns today.

## Precip Image: 5 PM CT



Wind Speed:  
5 PM CT



High Temps  
Today

# Houston Pilots: TUE. 7/29/2025

## Forecast Discussion

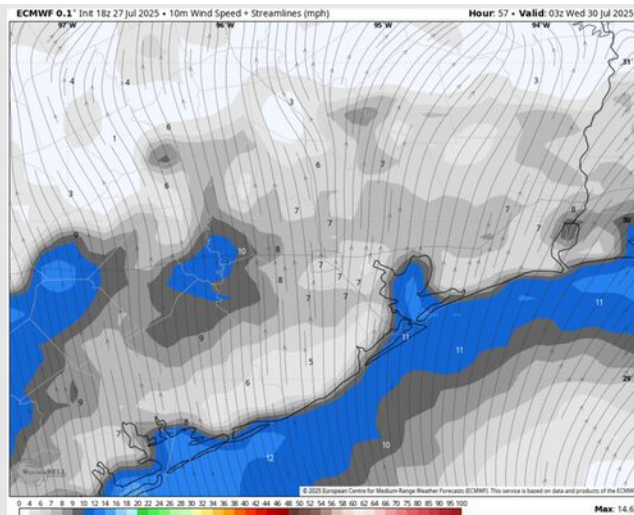
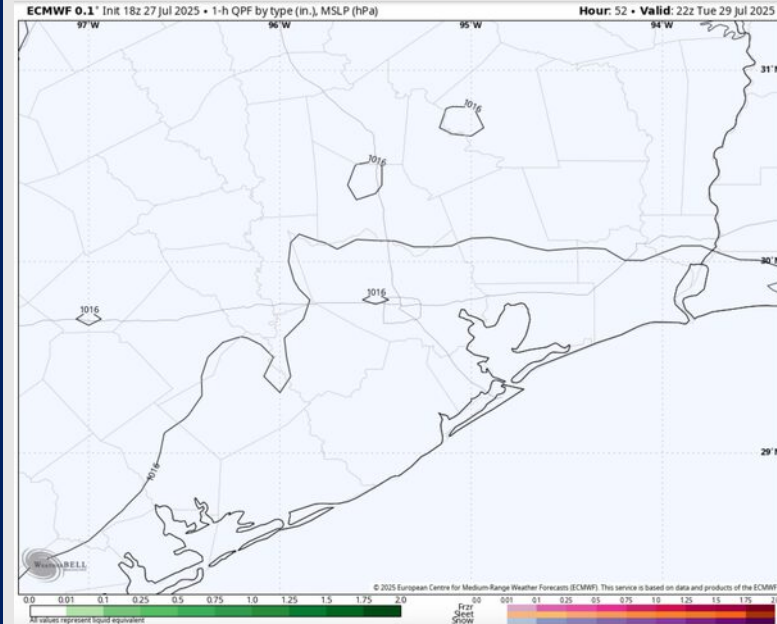
**Precip:** Favoring dry conditions for Tuesday.

**Wind:** Winds will be variable through 5 PM before settling out of the SW for the rest of the evening. **N of Morgan's Point:** Winds will be at 2 – 7 kts. **S of Morgan's Point:** Winds will be at 4 – 9 kts.

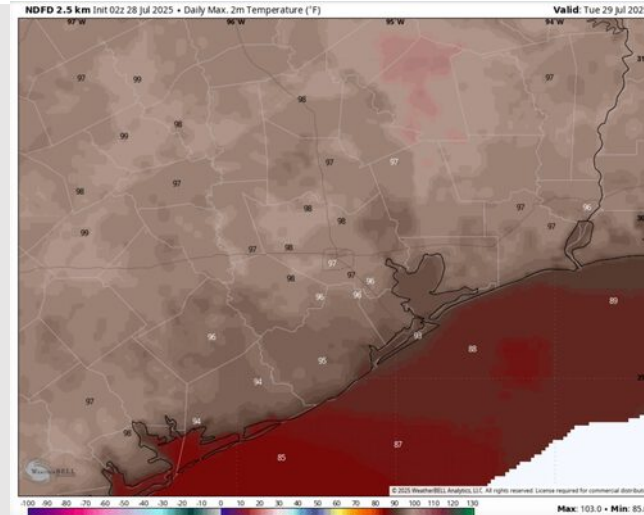
**High Temps:** **N of Morgan's Point:** Mid-Upper 90s F. **S of Morgan's Point:** Low 90s F.

**Visibility:** No visibility concerns Tuesday.

## Precip Image: 5 PM CT



**Wind Speed:**  
10 PM CT



**High Temps**  
**Tuesday**



# Houston Pilots: WED. 7/30/2025

## Forecast Discussion

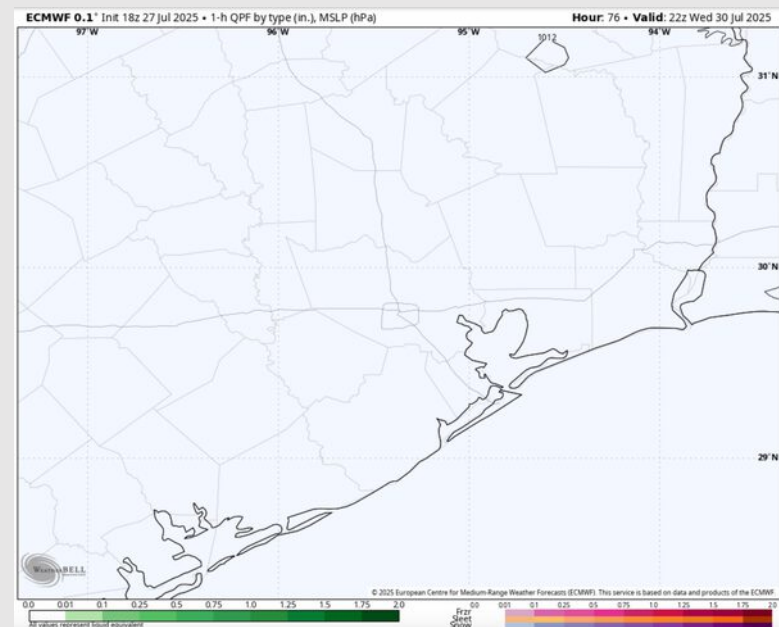
**Precip:** Favoring dry conditions Wednesday.

**Wind:** Winds will be from the S Wednesday. **N of Morgan's Point:** Winds will be at 1 – 6 kts. **S of Morgan's Point:** Winds will be at 5 – 10 kts.

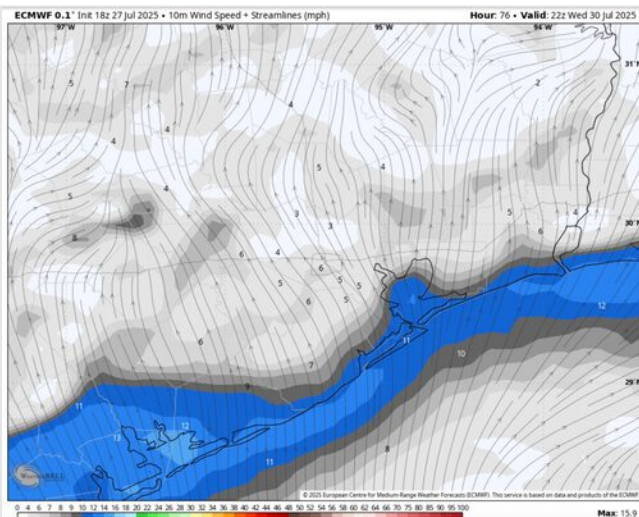
**High Temps:** **N of Morgan's Point:** Mid 90s F. **S of Morgan's Point:** Low 90s F.

**Visibility:** No visibility concerns Wednesday

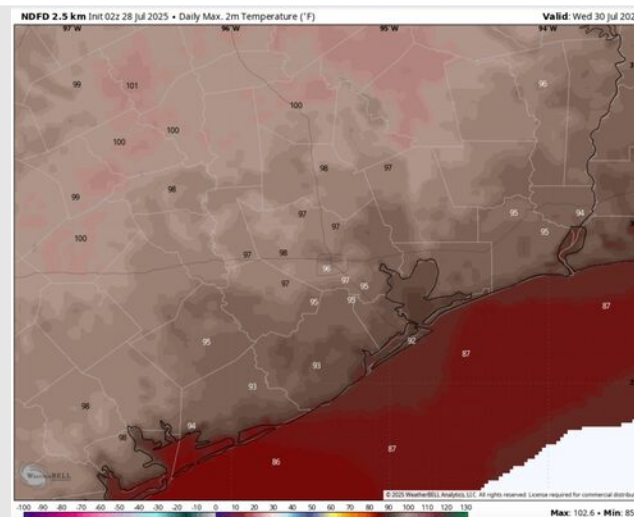
## Precip Image: 5 PM CT



Wind Speed:  
5 PM CT



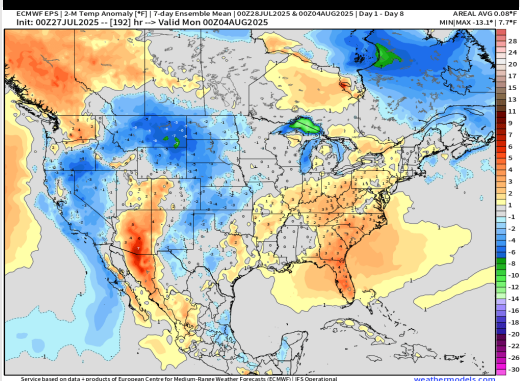
High Temps  
Wednesday



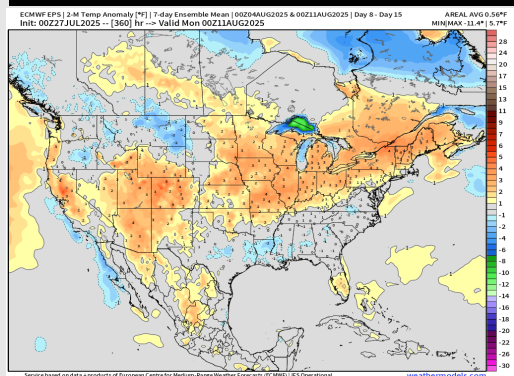


# Houston Pilots: 7/28/25

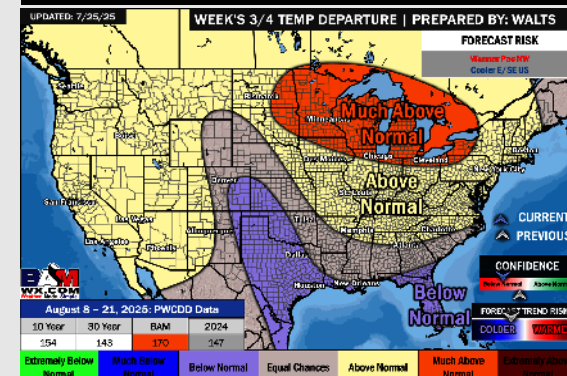
## Next 7 Day Temperature Departure



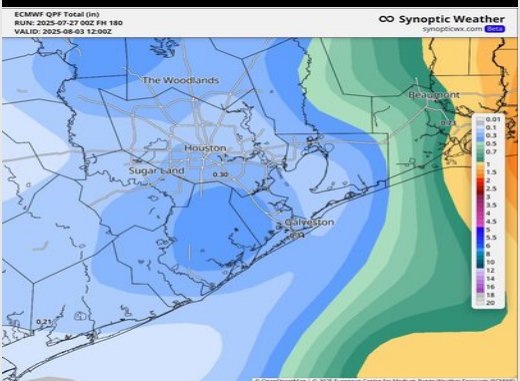
## 8-14 Day Temperature Departure



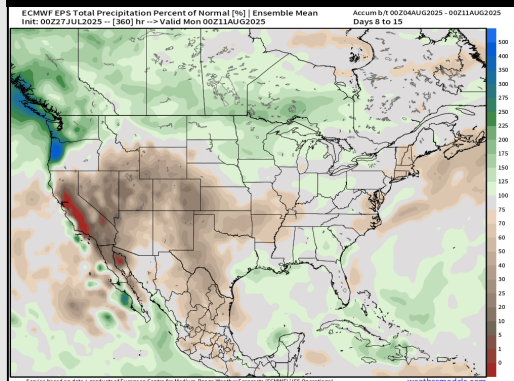
## 15-30 Day Temperature Departure



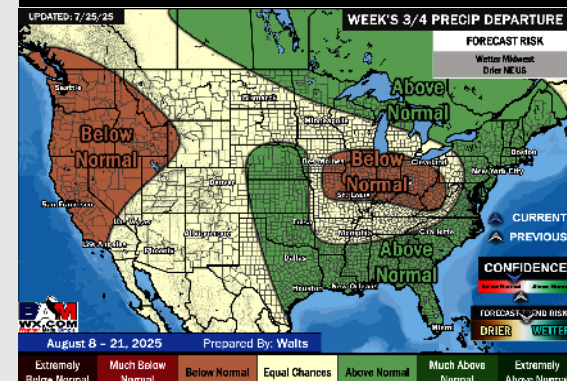
## Next 7 Day Total Precipitation



## 8-14 Day % of Average Precip.



## 15-30 Day % of Average Precip.



- Temps are expected to be above normal for the next 7 days with scattered rain chances through Monday and next weekend.
- Near normal temps and above normal rain chances are favored for days 8 – 14.
- Below normal temperatures are favored for the start of August along with above normal rainfall chances.