

# Houston Pilots Forecast Package



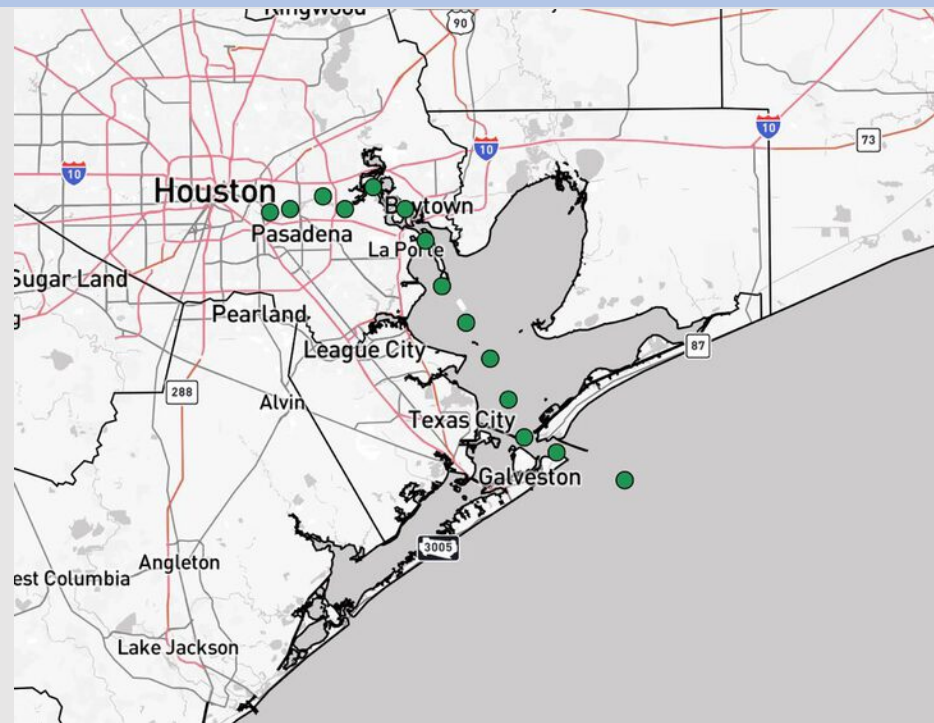
Updated: 12:30 PM CT

Wednesday, July 23, 2025

Forecaster: Lydia Purlee

## Weather Headlines

- Mostly dry conditions expected tonight.
- Scattered showers possible Thursday and Friday.
- Currently monitoring a low-end risk of tropical development this weekend. **See tropical outlook slide for more information.**



Current Radar: 12:30 PM CT

As always, please do not hesitate to reach out to us with any forecast questions at **(317)-560-8122**. **Press 1 for forecast questions.**

You can also access real-time forecast updates and 24/7 meteorological chat assistance on your **Clarity** app. Click [here](#) for login assistance.

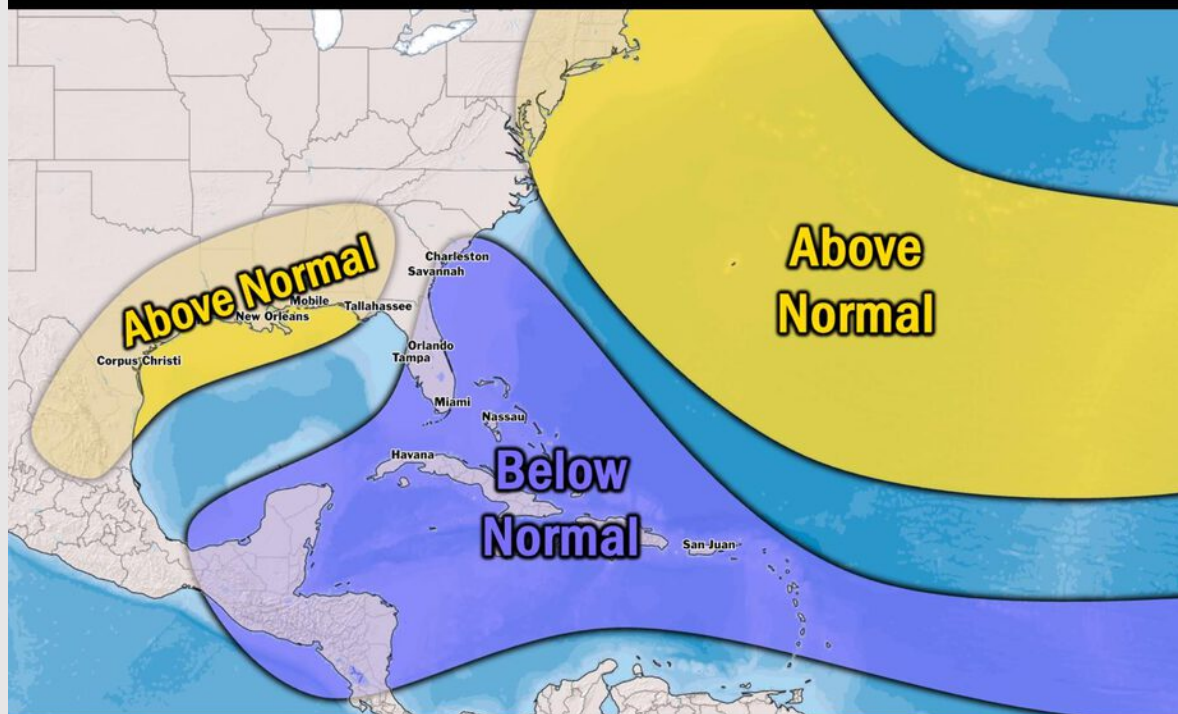


# Houston Pilots Tropical Update

## Seasonal Hurricane Outlook

### 2025 HURRICANE SEASON

Updated Issued: Wednesday, June 25, 2025



#### KEY SEASON NOTES

**15 - 19**

Named Storms  
10 Year Avg: 17.8

**6 - 9**

Hurricanes  
10 Year Avg: 8.2

**2 - 4**

Major Hurricanes  
10 Year Avg: 3.8

Graphic to the left represents our favored seasonal outlook for the 2025 Hurricane Season. Conditions expected to be more favorable for tropical development within the Gulf this season.

No notable tropical development is expected over the next 7 days.

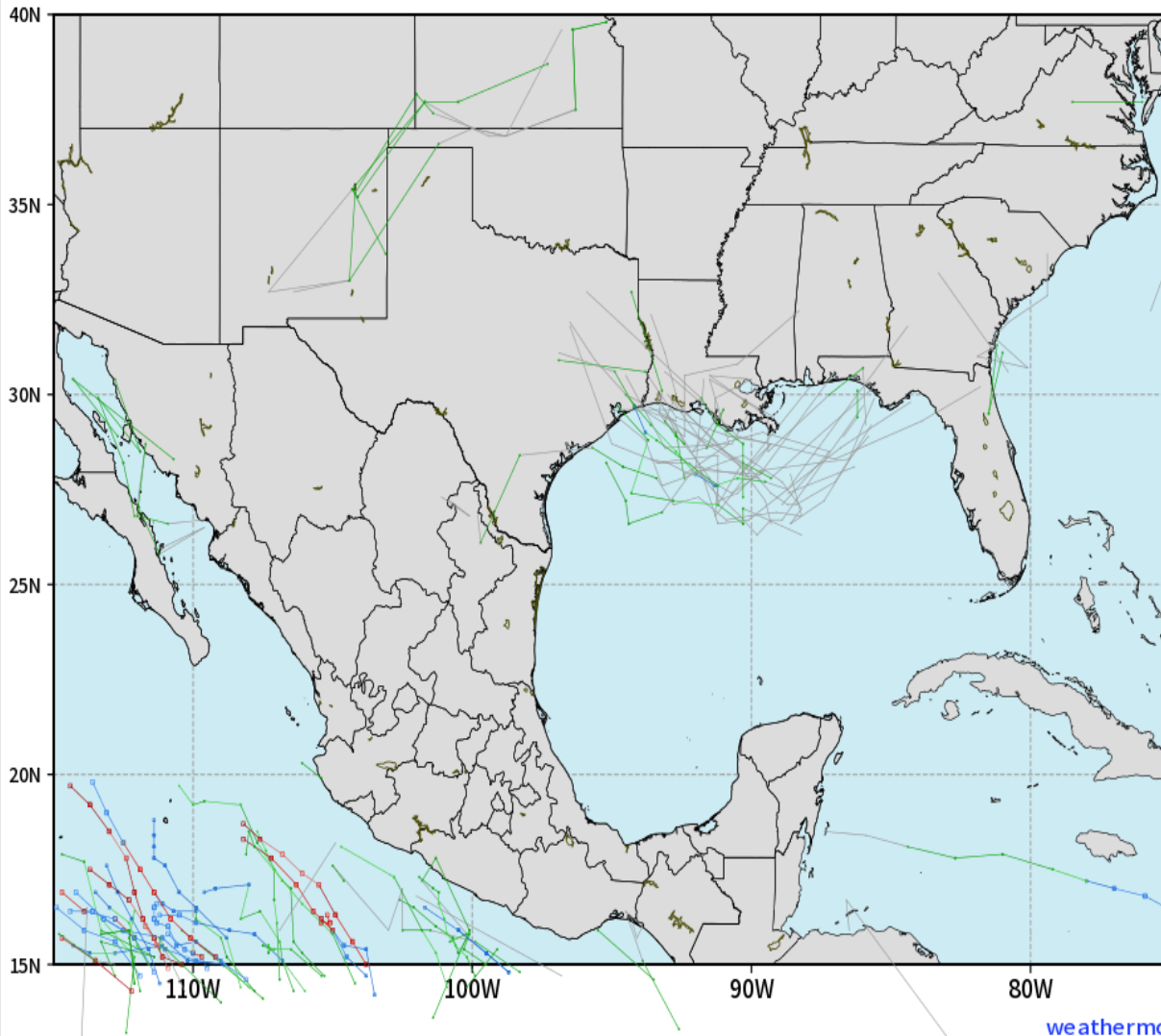
[Click here for the video!](#)

# Houston Pilots Tropical Update

## 10-Day Tropical Outlook

ECMWF GULF EPS Cyclone Locations --> Next [10-days]  
INIT: 00Z23JUL2025 --> UNTIL 00Z02AUG2025

o-o ENSEMBLE MEAN  
o-o 1000 - 1010 hPa  
o-o 980 - 999 hPa  
o-o 960 - 979 hPa  
o-o 950 - 959 hPa  
o-o < 950 hPa



[weathermodels.com](http://weathermodels.com)

Currently monitoring a low-end risk of tropical development this weekend. Preliminary outlooks show this system making landfall in/near Houston.

Regardless of tropical status, this system will likely provide rain and storm chances to all Stations when it makes landfall this weekend. Further updates to come as we monitor this potential system!

# Houston Pilots Visibility Chart (miles)



Visibility	Wed 2 pm	Wed 3 pm	Wed 4 pm	Wed 5 pm	Wed 6 pm	Wed 7 pm	Wed 8 pm	Wed 9 pm	Wed 10 pm	Wed 11 pm	Thu 12 am	Thu 1 am	Thu 2 am	Thu 3 am	Thu 4 am	Thu 5 am	Thu 6 am	Thu 7 am	Thu 8 am	Thu 9 am	Thu 10 am	Thu 11 am	Thu 12 pm	Thu 1 pm
Houston Pilots N - 610 Bridge	10	10	10	10	10	10	10	10	10	10	10	10	10	10	10	10	10	9	5.9	7.9	10	10	10	10
Houston Pilots M - Kinder 1	10	10	10	10	10	10	10	10	10	10	10	10	10	10	10	10	10	9	5.9	7.9	10	10	10	10
Houston Pilots L - Greens Bayou	10	10	10	10	10	10	10	10	10	10	10	10	10	10	10	10	10	9	5.9	7.9	10	10	10	10
Houston Pilots K - Shell Crude	10	10	10	10	10	10	10	10	10	10	10	10	10	10	10	10	10	9	5.9	7.9	10	10	10	10
Houston Pilots J - Lynchburg Ferries	10	10	10	10	10	10	10	10	10	10	10	10	10	10	10	10	10	9	5.9	7.9	10	10	10	10
Houston Pilots I - Exxon 3	10	10	10	10	10	10	10	10	10	10	10	10	10	10	10	10	10	9	5.9	7.9	10	10	10	10
Houston Pilots H - Morgans Point	10	10	10	10	10	10	10	10	10	10	10	10	10	10	10	10	10	10	5.9	7.9	10	10	10	10
Houston Pilots G - 75/76	10	10	10	10	10	10	10	10	10	10	10	10	10	10	10	10	10	10	6.9	10	10	10	10	10
Houston Pilots F - 63/64	10	10	10	10	10	10	10	10	10	10	10	10	10	10	10	10	10	10	7.9	10	10	10	10	10
Houston Pilots E - 51/52	10	10	10	10	10	10	10	10	10	10	10	10	10	10	10	10	10	10	9	10	10	10	10	10
Houston Pilots D - 37/38	10	10	10	10	10	10	10	10	10	10	10	10	10	10	10	10	10	10	9	10	10	10	10	10
Houston Pilots C - 25/26	10	10	10	10	10	10	10	10	10	10	10	10	10	10	10	10	10	10	9	10	10	10	10	10
Houston Pilots B - 11/12	10	10	10	10	10	10	10	10	10	10	10	10	10	10	10	10	10	10	9	10	10	10	10	10
Houston Pilots A - 1 & 2 Bravo	10	10	10	10	10	10	10	10	10	10	10	10	10	10	10	10	10	10	10	10	10	10	10	10

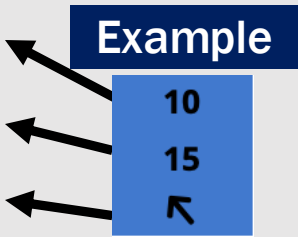
**NOTE:** This is automated data that may/may not agree with the official BAM thinking that's found on the daily slides or special visibility report slides. This data should be used as a guide only



# Houston Pilots Wind Chart



Sustained Wind 10 Knots  
Gusts 15 Knots  
Wind from the SE



Wind	Wed 2 pm	Wed 3 pm	Wed 4 pm	Wed 5 pm	Wed 6 pm	Wed 7 pm	Wed 8 pm	Wed 9 pm	Wed 10 pm	Wed 11 pm	Thu 12 am	Thu 1 am	Thu 2 am	Thu 3 am	Thu 4 am	Thu 5 am	Thu 6 am	Thu 7 am	Thu 8 am	Thu 9 am	Thu 10 am	Thu 11 am	Thu 12 pm	Thu 1 pm
Houston Pilots N - 610 Bridge	3	5	6	6	6	8	8	7	6	6	5	5	3	3	3	3	3	3	3	3	3	3	3	3
	9	10	12	13	13	14	15	14	12	12	10	9	8	8	7	8	7	7	7	6	7	7	7	7
	↗	↗	↗	↗	↗	↗	↗	↗	↗	↗	↗	↗	↗	↗	↗	↗	↗	↗	↗	↗	↗	↗	↗	↘
Houston Pilots M - Kinder 1	3	5	6	6	7	8	8	7	6	6	5	3	3	3	3	3	3	3	3	3	3	3	3	3
	9	10	12	13	13	14	15	14	12	12	10	9	8	7	7	7	7	7	7	6	6	7	7	7
	↗	↗	↗	↗	↗	↗	↗	↗	↗	↗	↗	↗	↗	↗	↗	↗	↗	↗	↗	↗	↗	↘	↘	↘
Houston Pilots L - Greens Bayou	3	5	6	6	6	7	7	6	6	6	5	3	3	3	3	3	3	3	3	3	3	3	3	3
	9	10	12	12	12	13	14	13	12	10	9	8	7	7	7	7	6	6	6	6	6	7	7	7
	↗	↗	↗	↗	↗	↗	↗	↗	↗	↗	↗	↗	↗	↗	↗	↗	↗	↗	↗	↗	↗	↘	↘	↘
Houston Pilots K - Shell Crude	5	6	6	7	7	7	8	6	6	6	5	3	3	3	3	3	3	3	3	3	3	3	3	3
	9	10	12	13	13	13	14	13	12	10	9	8	7	7	7	7	6	6	6	6	6	7	7	7
	↗	↗	↗	↗	↗	↗	↗	↗	↗	↗	↗	↗	↗	↗	↗	↗	↗	↗	↗	↗	↗	↘	↘	↘
Houston Pilots J - Lynchburg Ferries	5	6	6	6	6	7	7	6	6	5	3	3	3	3	3	3	2	2	3	2	2	3	3	3
	9	10	12	13	12	13	14	13	10	10	9	7	7	6	6	6	6	6	6	5	6	7	7	7
	↗	↗	↗	↗	↗	↗	↗	↗	↗	↗	↗	↗	↗	↗	↗	↗	↗	↗	↗	↗	↗	↘	↘	↘
Houston Pilots I - Exxon 3	6	8	8	9	10	10	10	10	10	9	8	8	7	7	7	7	6	6	6	6	6	6	5	5
	12	13	13	15	15	15	16	15	14	14	13	12	10	10	9	9	9	9	9	8	8	8	8	7
	↗	↗	↗	↗	↗	↗	↗	↗	↗	↗	↗	↗	↗	↗	↗	↗	↗	↗	↗	↗	↗	↘	↘	↘
Houston Pilots H - Morgans Point	7	8	8	9	10	10	10	10	9	9	8	8	7	7	6	7	6	6	6	6	6	6	5	3
	12	13	13	15	15	15	16	15	14	13	12	10	10	9	9	9	9	9	9	8	8	8	8	7
	↗	↗	↗	↗	↗	↗	↗	↗	↗	↗	↗	↗	↗	↗	↗	↗	↗	↗	↗	↗	↗	↘	↘	↘
Houston Pilots G - 75/76	6	8	8	9	10	10	12	10	10	9	8	8	8	8	8	8	8	8	8	7	6	6	5	3
	13	14	14	15	16	16	16	15	15	14	13	12	12	12	10	12	10	10	10	10	9	9	8	8
	↗	↗	↗	↗	↗	↗	↗	↗	↗	↗	↗	↗	↗	↗	↗	↗	↗	↗	↗	↗	↗	↘	↘	↘
Houston Pilots F - 63/64	6	7	8	9	10	10	10	10	10	9	8	8	8	8	8	8	8	8	8	7	6	6	5	3
	13	13	14	15	15	16	16	15	14	14	13	12	12	12	10	12	10	10	12	10	10	10	8	8
	↗	↗	↗	↗	↗	↗	↗	↗	↗	↗	↗	↗	↗	↗	↗	↗	↗	↗	↗	↗	↗	↘	↘	↘
Houston Pilots E - 51/52	6	7	8	9	9	10	10	10	9	9	8	8	8	8	8	8	8	8	8	7	7	6	5	3
	12	13	13	15	15	15	15	15	14	13	13	12	12	10	10	12	10	12	12	10	10	10	9	8
	↗	↗	↗	↗	↗	↗	↗	↗	↗	↗	↗	↗	↗	↗	↗	↗	↗	↗	↗	↗	↗	↘	↘	↘
Houston Pilots D - 37/38	6	7	8	8	9	9	10	10	9	9	8	8	8	8	8	8	8	8	8	7	7	6	6	3
	12	13	13	15	14	15	15	14	13	13	12	12	10	10	10	12	10	12	12	10	10	10	9	8
	↗	↗	↗	↗	↗	↗	↗	↗	↗	↗	↗	↗	↗	↗	↗	↗	↗	↗	↗	↗	↗	↘	↘	↘
Houston Pilots C - 25/26	6	6	7	8	8	8	9	9	8	8	8	8	7	7	7	7	7	7	8	7	7	7	6	5
	12	12	13	14	14	14	14	13	12	13	12	12	10	10	10	10	10	10	12	10	10	10	9	8
	↗	↗	↗	↗	↗	↗	↗	↗	↗	↗	↗	↗	↗	↗	↗	↗	↗	↗	↗	↗	↗	↘	↘	↘
Houston Pilots B - 11/12	6	6	6	7	8	8	8	8	7	7	6	6	6	6	6	6	6	6	6	6	6	6	6	5
	10	10	12	13	12	13	13	12	12	12	12	10	10	10	10	10	10	10	12	10	10	10	9	8
	↗	↗	↗	↗	↗	↗	↗	↗	↗	↗	↗	↗	↗	↗	↗	↗	↗	↗	↗	↗	↗	↘	↘	↘
Houston Pilots A - 1 & 2 Bravo	5	5	6	6	7	8	8	8	8	8	8	8	8	8	8	8	8	8	8	8	8	7	6	5
	9	9	10	12	12	12	12	12	12	12	12	12	12	12	12	13	13	13	13	13	12	12	10	9
	↗	↗	↗	↗	↗	↗	↗	↗	↗	↗	↗	↗	↗	↗	↗	↗	↗	↗	↗	↗	↗	↘	↘	↘

NOTE: This is automated data that may/may not agree with the official BAM thinking that's found on the daily slides.  
This data should be used as a guide only.

# Houston Pilots: WED. 7/23/2025

## Forecast Discussion

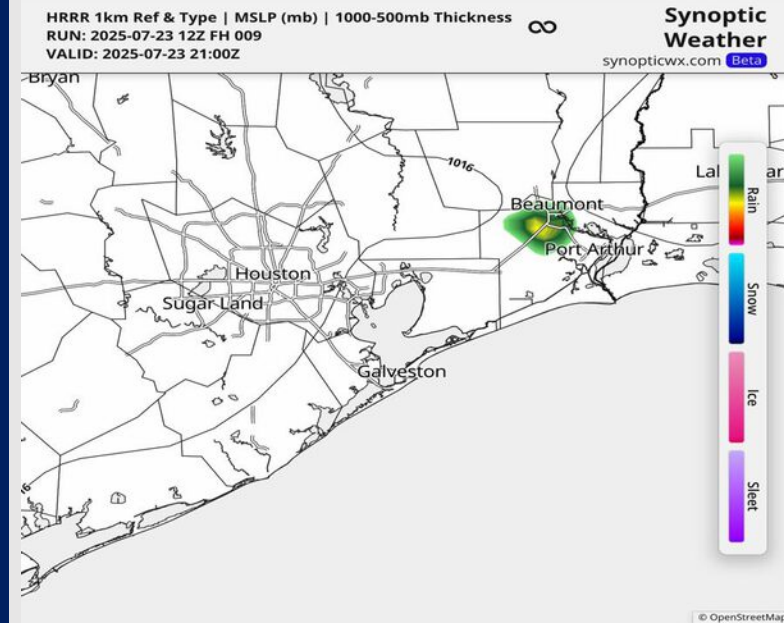
**Precip:** Favoring dry conditions today. Light showers are possible from 4 – 8 PM, but these are expected to stay E of all Stations.

**Wind:** Winds will be out of the S/SW. **N of Morgan's Point:** Winds will be at 6 – 10 kts. **S of Morgan's Point:** Winds will be at 6 – 12 kts.

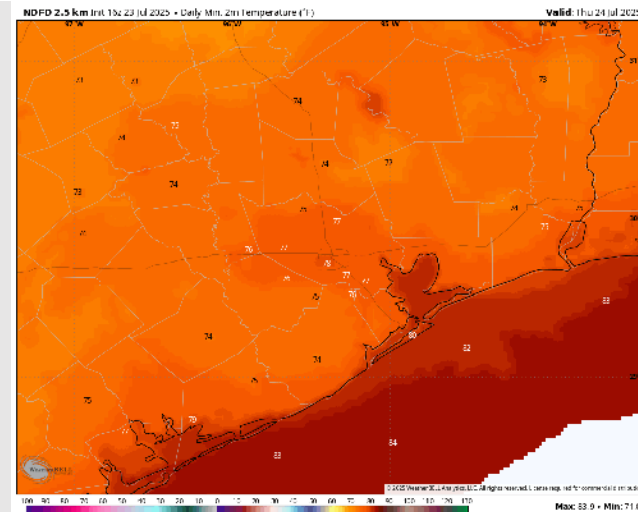
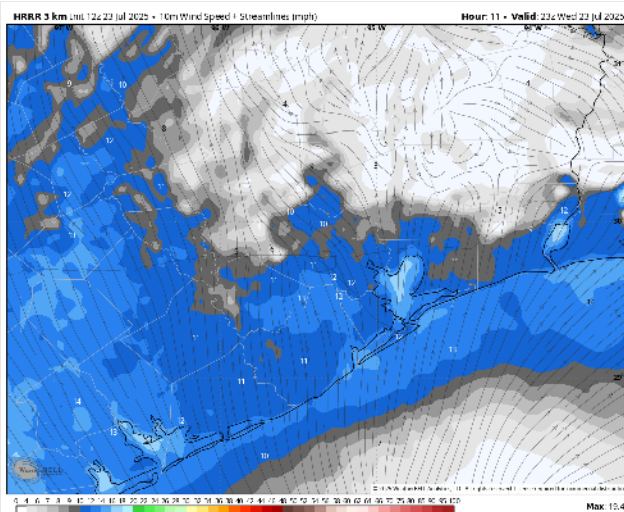
**Low Temps:** **N of Morgan's Point:** High 70s F. **S of Morgan's Point:** Low 80s F.

**Visibility:** No visibility concerns today.

## Precip Image: 4 PM CT



Wind Speed:  
6 PM CT



Low Temps  
THU AM

# Houston Pilots: THU. 7/24/2025

## Forecast Discussion

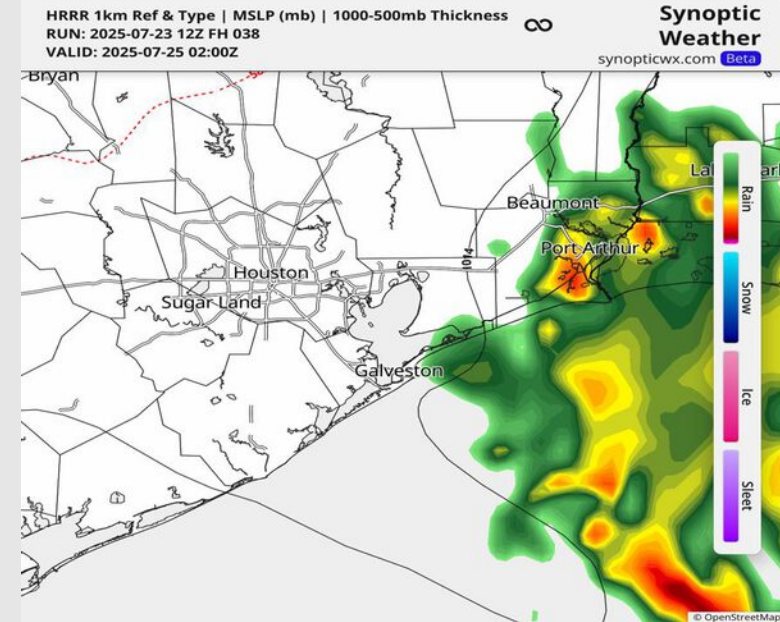
**Precip:** Favoring dry conditions throughout the day, however, scattered storms are possible for all Stations from 8PM Thursday – 2AM Friday. Stations S of Morgan's Point are most likely to get hit by a cell. **Main risks for these storms include lightning, heavy downpours, and 30 kt wind gusts.**

**Wind:** Winds will be from the W/NW until 1 PM when the winds shift to blow from the SW. After 8 PM, winds become variable for the rest of the PM. **N of Morgan's Point:** Winds will be at 4 – 8 kts. **S of Morgan's Point:** Winds will be at 5 – 13 kts.

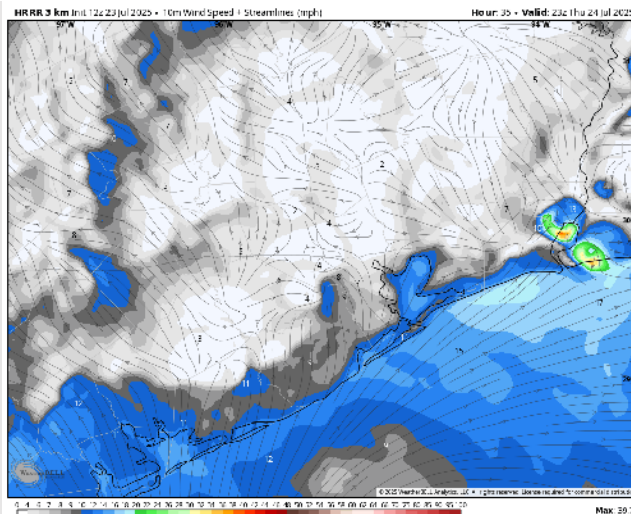
**High Temps:** **N of Morgan's Point:** High 90s F. **S of Morgan's Point:** Low 90s F to high 80s F.

**Visibility:** No visibility concerns Thursday except for a few heavy downpours.

## Precip Image: 9 PM CT



Wind Speed:  
6 PM CT

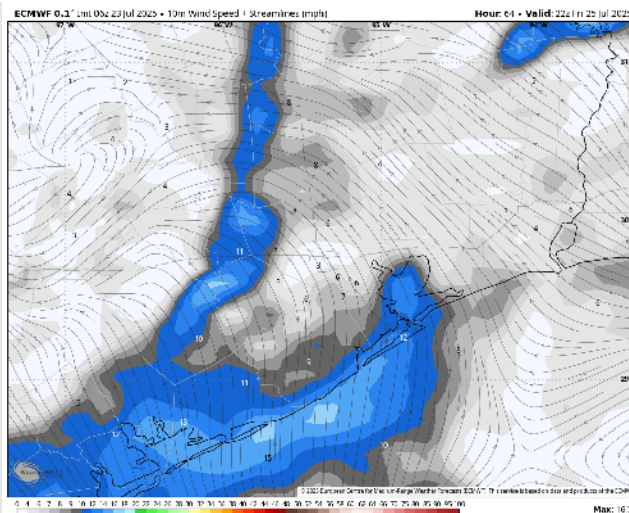




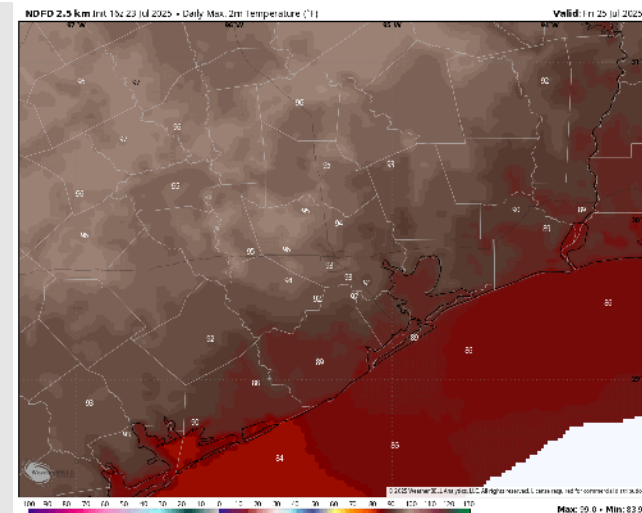
### Precip Image: 7 PM CT

**High Temps:** N of Morgan's Point: Low 90s F. S of Morgan's Point: High 80s F.

**Visibility:** No fog concerns Friday, however, visibility may be limited under heavy downpours.



**Wind Speed:**  
**5 PM CT**

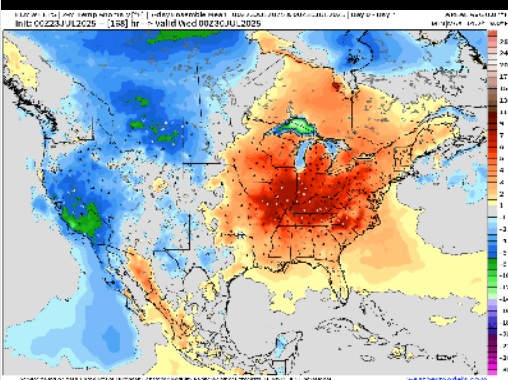


## High Temps Friday

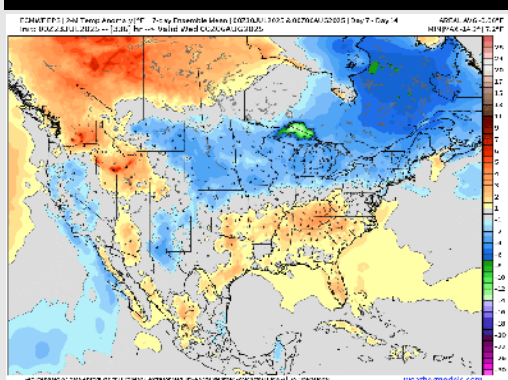


# Houston Pilots: 7/23/25

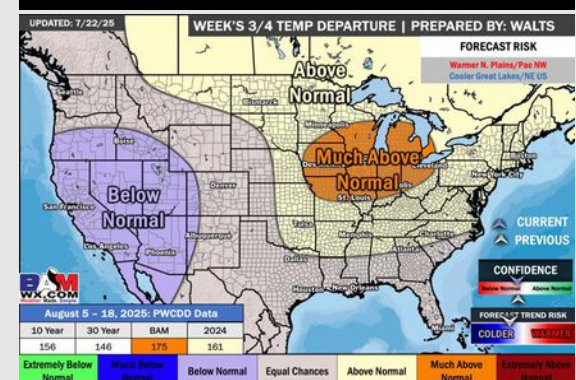
## Next 7 Day Temperature Departure



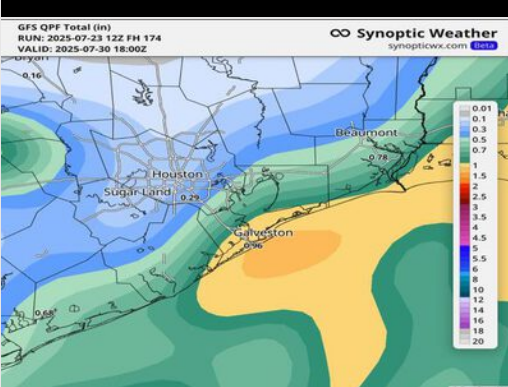
## 8-14 Day Temperature Departure



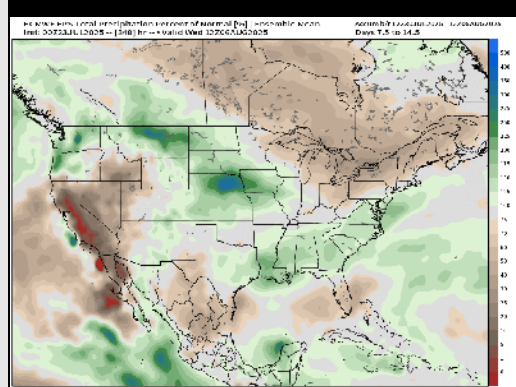
## 15-30 Day Temperature Departure



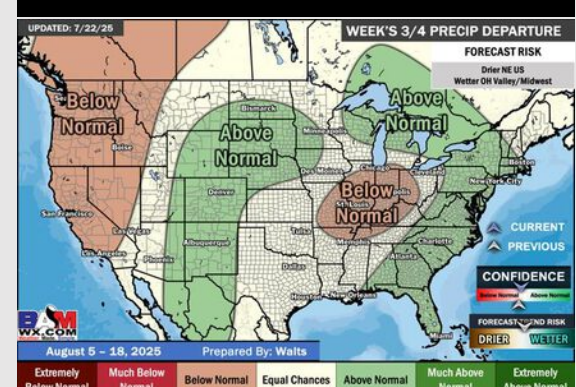
## Next 7 Day Total Precipitation



## 8-14 Day % of Average Precip.



## 15-30 Day % of Average Precip.



- Temps are expected to be above normal for the next 7 days with rain chances possible into the weekend.
- Warmer than normal temps and above normal rain chances are favored for days 8 – 14.
- Near normal to below normal temperatures are favored for the start of August along with near normal rainfall chances.