

Good Afternoon, we are tracking stronger storms pushing northeast towards the bay. Additional rounds of storms with equal strength in terms of wind gusts can be possible through the ~4PM-CT

IMAGE NOTES:

- ✓ Gusts of 30-45kts will be possible just ahead of thunderstorms. ETA times will not be perfect in this regard.
- ✓ Expect storms with equal strength to continue to be in play through ~4PM-CT.

Houston Pilots Forecast Package



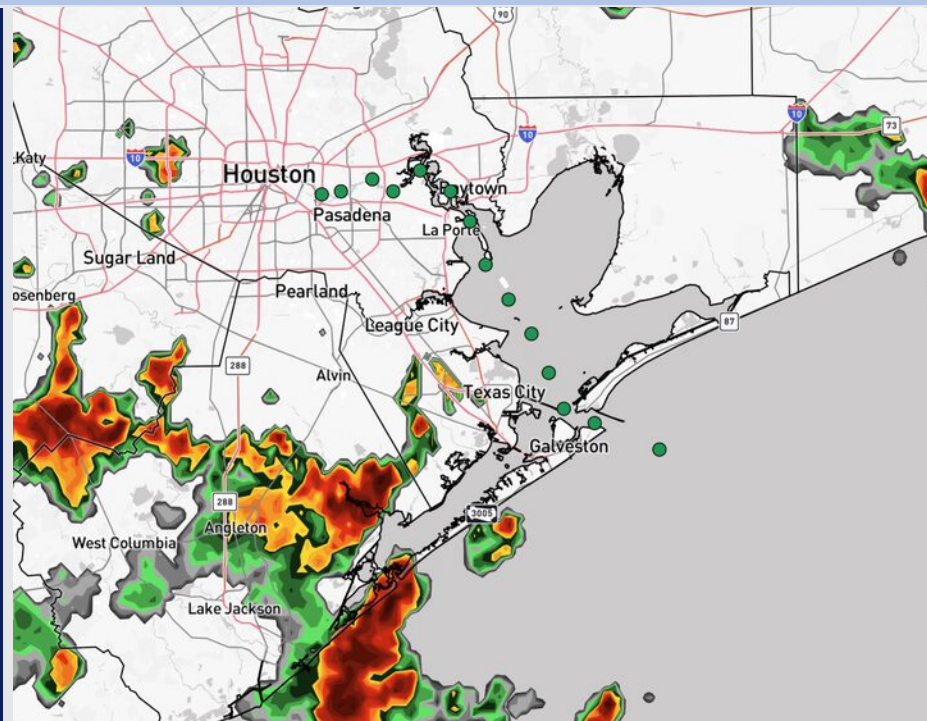
Updated: 11:40 AM CT

Wednesday, July 9, 2025

Forecaster: John Kemper

Weather Headlines

- Scattered showers and storms expected from 12-9PM today. **Some of these storms will have risks of heavy downpours, lightning, and wind gusts of 30-40 kts.**
- **Some stronger storms with risks for heavy downpours, lightning, and wind gusts of up to 35 kts will be possible over the next 72 hours.**
- No tropical impacts favored for Houston over the next 7 days.



Current Radar: 11:30 AM CT

As always, please do not hesitate to reach out to us with any forecast questions at **(317)-560-8122**. **Press 1 for forecast questions.**

You can also access real-time forecast updates and 24/7 meteorological chat assistance on your [Clarity](#) app. Click [here](#) for login assistance.

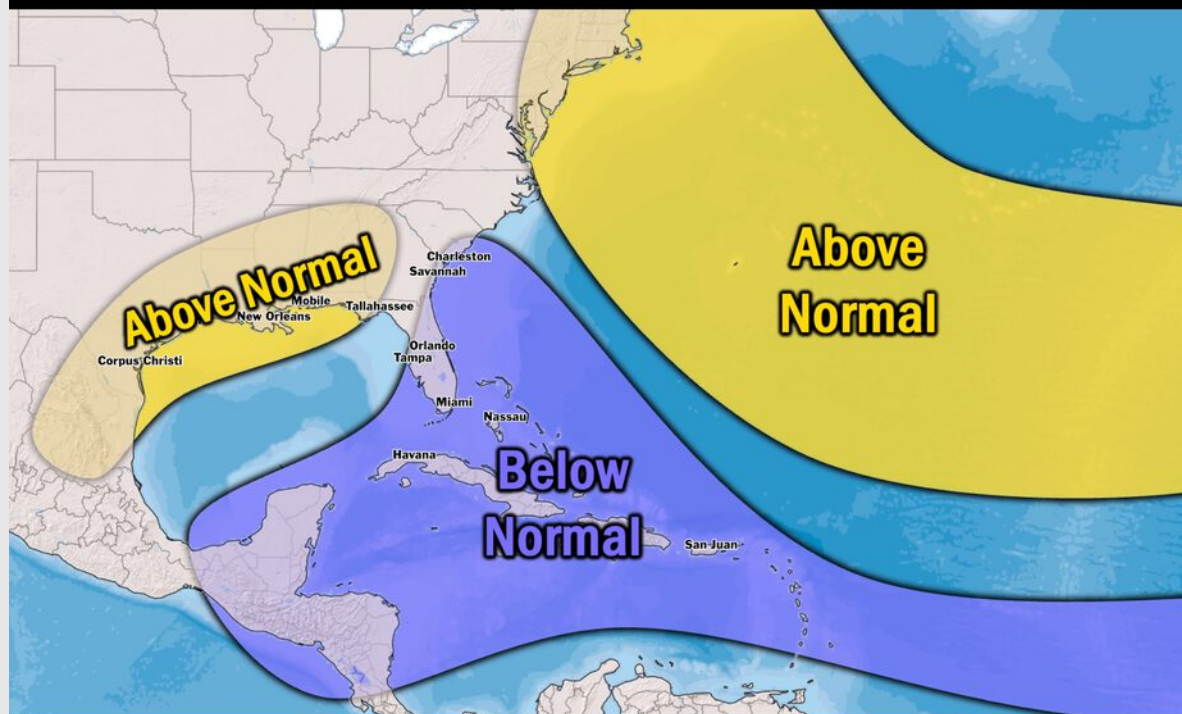


Houston Pilots Tropical Update

Seasonal Hurricane Outlook

2025 HURRICANE SEASON

Updated Issued: Wednesday, June 25, 2025



KEY SEASON NOTES

15 - 19

Named Storms
10 Year Avg: 17.8

6 - 9

Hurricanes
10 Year Avg: 8.2

2 - 4

Major Hurricanes
10 Year Avg: 3.8

Graphic to the left represents our favored seasonal outlook for the 2025 Hurricane Season. Conditions expected to be more favorable for tropical development within the Gulf this season.

No notable tropical development is expected over the next 7 days.

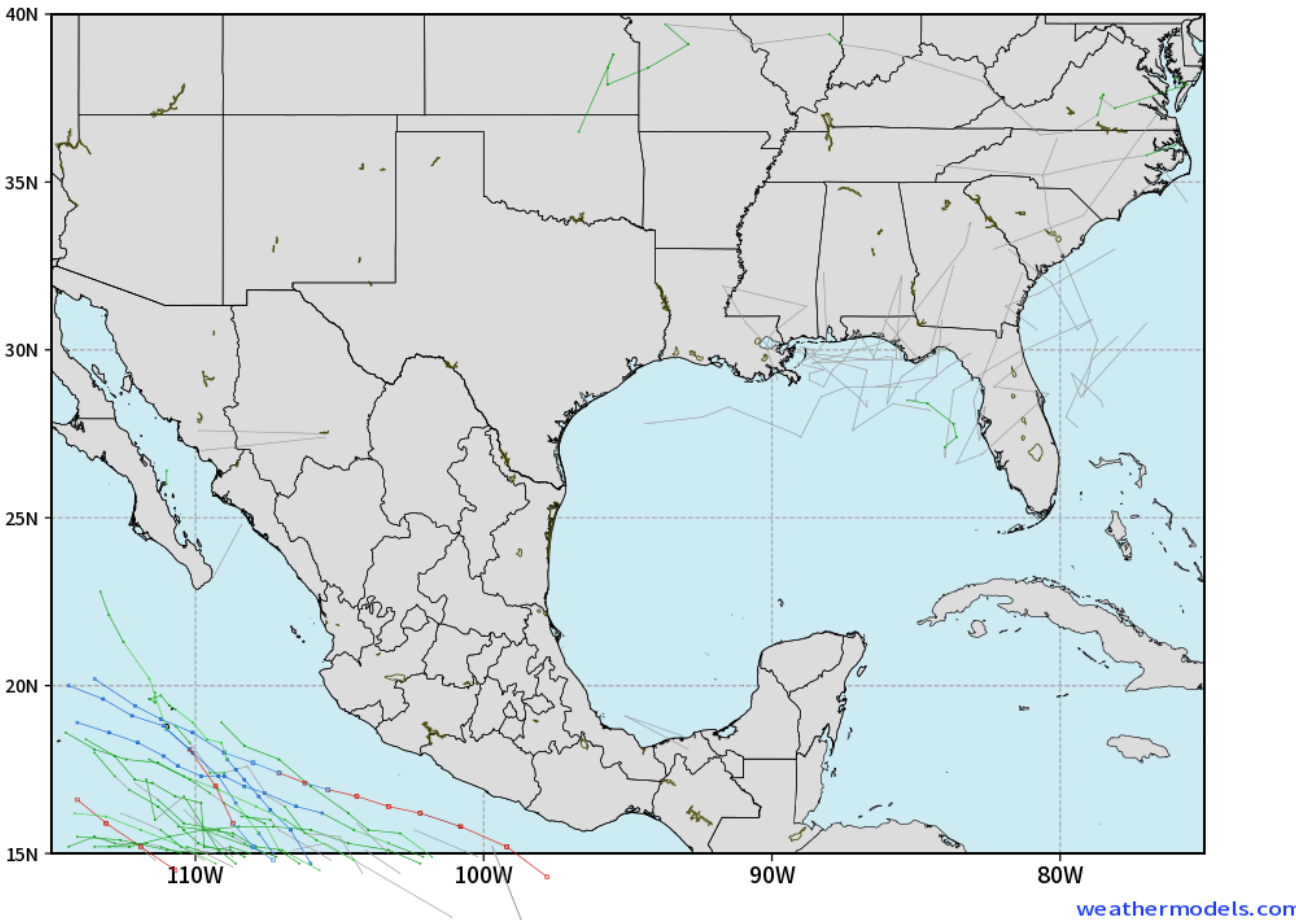
[Click here for the video!](#)

Houston Pilots Tropical Update

10 Day Tropical Outlook

ECMWF GULF EPS Cyclone Locations --> Next [10-days]
INIT: 12Z08JUL2025 --> UNTIL 12Z18JUL2025

o-o ENSEMBLE MEAN
o-o 1000 - 1010 hPa
o-o 980 - 999 hPa
o-o 960 - 979 hPa
o-o 950 - 959 hPa
o-o < 950 hPa



No tropical disturbances are expected over the next 7 days.

Currently, we are not favoring any tropical impacts for Houston over the next 10 days.

Houston Pilots Visibility Chart (miles)



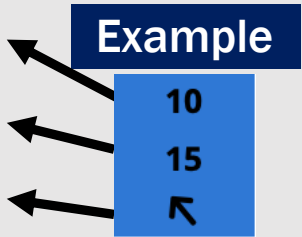
| Visibility | Wed 1 am | Wed 2 am | Wed 3 am | Wed 4 am | Wed 5 am | Wed 6 am | Wed 7 am | Wed 8 am | Wed 9 am | Wed 10 am | Wed 11 am | Wed 12 pm | Wed 1 pm | Wed 2 pm | Wed 3 pm | Wed 4 pm | Wed 5 pm | Wed 6 pm | Wed 7 pm | Wed 8 pm | Wed 9 pm | Wed 10 pm | Wed 11 pm | Thu 12 am |
|--------------------------------------|----------|----------|----------|----------|----------|----------|----------|----------|----------|-----------|-----------|-----------|----------|----------|----------|----------|----------|----------|----------|----------|----------|-----------|-----------|-----------|
| Houston Pilots N - 610 Bridge | 10 | 10 | 10 | 10 | 10 | 10 | 10 | 10 | 10 | 10 | 10 | 10 | 10 | 10 | 10 | 10 | 10 | 10 | 10 | 10 | 10 | 10 | 10 | 10 |
| Houston Pilots M - Kinder 1 | 10 | 10 | 10 | 10 | 10 | 10 | 10 | 10 | 10 | 10 | 10 | 10 | 10 | 10 | 10 | 10 | 10 | 10 | 10 | 10 | 10 | 10 | 10 | 10 |
| Houston Pilots L - Greens Bayou | 10 | 10 | 10 | 10 | 10 | 10 | 10 | 10 | 10 | 10 | 10 | 10 | 10 | 10 | 10 | 10 | 10 | 10 | 10 | 10 | 10 | 10 | 10 | 10 |
| Houston Pilots K - Shell Crude | 10 | 10 | 10 | 10 | 10 | 10 | 10 | 10 | 10 | 10 | 10 | 10 | 10 | 10 | 10 | 10 | 10 | 10 | 10 | 10 | 10 | 10 | 10 | 10 |
| Houston Pilots J - Lynchburg Ferries | 10 | 10 | 10 | 10 | 10 | 10 | 10 | 10 | 10 | 10 | 10 | 10 | 10 | 10 | 10 | 10 | 10 | 10 | 10 | 10 | 10 | 10 | 10 | 10 |
| Houston Pilots I - Exxon 3 | 10 | 10 | 10 | 10 | 10 | 10 | 10 | 10 | 10 | 10 | 10 | 10 | 10 | 10 | 10 | 10 | 10 | 10 | 10 | 10 | 10 | 10 | 10 | 10 |
| Houston Pilots H - Morgans Point | 10 | 10 | 10 | 10 | 10 | 10 | 10 | 10 | 10 | 10 | 10 | 10 | 10 | 10 | 10 | 10 | 10 | 10 | 10 | 10 | 10 | 10 | 10 | 10 |
| Houston Pilots G - 75/76 | 10 | 10 | 10 | 10 | 10 | 10 | 10 | 10 | 10 | 10 | 10 | 10 | 10 | 10 | 10 | 10 | 10 | 10 | 10 | 10 | 10 | 10 | 10 | 9 |
| Houston Pilots F - 63/64 | 10 | 10 | 10 | 10 | 10 | 10 | 10 | 10 | 10 | 10 | 10 | 10 | 10 | 10 | 10 | 10 | 10 | 10 | 10 | 10 | 10 | 10 | 10 | 9 |
| Houston Pilots E - 51/52 | 10 | 10 | 10 | 10 | 10 | 10 | 10 | 10 | 10 | 10 | 10 | 10 | 10 | 10 | 10 | 10 | 10 | 10 | 10 | 10 | 10 | 10 | 10 | 10 |
| Houston Pilots D - 37/38 | 10 | 10 | 10 | 10 | 10 | 10 | 10 | 10 | 10 | 10 | 10 | 10 | 10 | 10 | 10 | 10 | 10 | 10 | 10 | 10 | 10 | 10 | 10 | 10 |
| Houston Pilots C - 25/26 | 10 | 10 | 10 | 10 | 10 | 10 | 10 | 10 | 10 | 10 | 10 | 10 | 10 | 10 | 10 | 10 | 10 | 10 | 10 | 10 | 10 | 10 | 10 | 10 |
| Houston Pilots B - 11/12 | 10 | 10 | 10 | 10 | 10 | 10 | 10 | 10 | 10 | 10 | 10 | 10 | 10 | 10 | 10 | 10 | 10 | 10 | 10 | 10 | 10 | 10 | 10 | 10 |
| Houston Pilots A - 1 & 2 Bravo | 10 | 10 | 10 | 10 | 10 | 10 | 10 | 10 | 10 | 10 | 10 | 10 | 10 | 10 | 10 | 10 | 10 | 10 | 10 | 10 | 10 | 10 | 10 | 10 |

NOTE: This is automated data that may/may not agree with the official BAM thinking that's found on the daily slides or special visibility report slides. This data should be used as a guide only

Houston Pilots Wind Chart



Sustained Wind 10 Knots
Gusts 15 Knots
Wind from the SE



| Wind | Wed 1 am | Wed 2 am | Wed 3 am | Wed 4 am | Wed 5 am | Wed 6 am | Wed 7 am | Wed 8 am | Wed 9 am | Wed 10 am | Wed 11 am | Wed 12 pm | Wed 1 pm | Wed 2 pm | Wed 3 pm | Wed 4 pm | Wed 5 pm | Wed 6 pm | Wed 7 pm | Wed 8 pm | Wed 9 pm | Wed 10 pm | Wed 11 pm | Thu 12 am |
|--------------------------------------|---------------|---------------|---------------|---------------|---------------|---------------|--------------|--------------|--------------|--------------|--------------|--------------|--------------|--------------|--------------|---------------|---------------|---------------|---------------|---------------|---------------|---------------|---------------|---------------|
| Houston Pilots N - 610 Bridge | 3 8 ↗ | 3 8 ↗ | 3 8 ↗ | 3 8 ↗ | 3 8 ↗ | 3 7 ↗ | 3 7 ↗ | 3 7 ↗ | 3 7 ↗ | 3 8 ↗ | 5 9 ↗ | 6 12 ↗ | 6 12 ↗ | 6 13 ↗ | 6 13 ↗ | 6 13 ↗ | 6 13 ↗ | 6 12 ↗ | 6 12 ↗ | 6 10 ↗ | 6 10 ↗ | 6 10 ↗ | 6 12 ↗ | 6 10 ↗ |
| Houston Pilots M - Kinder 1 | 3 8 ↗ | 3 8 ↗ | 3 7 ↗ | 3 7 ↗ | 3 8 ↗ | 3 7 ↗ | 3 6 ↗ | 3 7 ↗ | 3 7 ↗ | 3 8 ↗ | 5 9 ↗ | 6 10 ↗ | 6 12 ↗ | 6 13 ↗ | 6 13 ↗ | 6 13 ↗ | 6 13 ↗ | 6 12 ↗ | 6 12 ↗ | 6 10 ↗ | 6 10 ↗ | 6 10 ↗ | 6 10 ↗ | 6 10 ↗ |
| Houston Pilots L - Greens Bayou | 3 8 ↗ | 3 8 ↗ | 3 7 ↗ | 3 7 ↗ | 3 7 ↗ | 3 7 ↗ | 3 6 ↗ | 3 7 ↗ | 3 7 ↗ | 3 7 ↗ | 5 9 ↗ | 6 10 ↗ | 6 12 ↗ | 6 13 ↗ | 6 13 ↗ | 6 13 ↗ | 6 13 ↗ | 6 12 ↗ | 6 12 ↗ | 6 10 ↗ | 6 10 ↗ | 6 10 ↗ | 6 10 ↗ | 6 10 ↗ |
| Houston Pilots K - Shell Crude | 3 8 ↗ | 3 8 ↗ | 3 7 ↗ | 3 7 ↗ | 3 7 ↗ | 3 6 ↗ | 3 6 ↗ | 3 7 ↗ | 3 7 ↗ | 3 7 ↗ | 5 9 ↗ | 6 10 ↗ | 6 12 ↗ | 6 13 ↗ | 6 14 ↗ | 6 14 ↗ | 7 13 ↗ | 6 13 ↗ | 6 12 ↗ | 6 10 ↗ | 6 10 ↗ | 6 10 ↗ | 6 10 ↗ | 6 10 ↗ |
| Houston Pilots J - Lynchburg Ferries | 3 7 ↗ | 3 7 ↗ | 3 7 ↗ | 3 7 ↗ | 3 7 ↗ | 2 6 ↗ | 2 6 ↗ | 2 6 ↗ | 2 7 ↗ | 3 7 ↗ | 5 9 ↗ | 6 10 ↗ | 6 12 ↗ | 6 13 ↗ | 6 13 ↗ | 6 13 ↗ | 6 13 ↗ | 6 13 ↗ | 6 12 ↗ | 6 10 ↗ | 6 10 ↗ | 6 10 ↗ | 6 10 ↗ | 6 9 ↗ |
| Houston Pilots I - Exxon 3 | 7 10 ↗ | 7 10 ↗ | 7 10 ↗ | 7 10 ↗ | 7 10 ↗ | 6 9 ↗ | 6 8 ↗ | 6 8 ↗ | 6 8 ↗ | 6 9 ↗ | 6 10 ↗ | 6 12 ↗ | 6 13 ↗ | 6 14 ↗ | 8 15 ↗ | 8 15 ↗ | 9 15 ↗ | 9 15 ↗ | 9 15 ↗ | 9 14 ↗ | 9 14 ↗ | 9 14 ↗ | 9 14 ↗ | 9 14 ↗ |
| Houston Pilots H - Morgans Point | 7 12 ↗ | 8 12 ↗ | 7 10 ↗ | 7 10 ↗ | 7 10 ↗ | 6 9 ↗ | 6 9 ↗ | 6 8 ↗ | 6 8 ↗ | 6 9 ↗ | 6 10 ↗ | 6 12 ↗ | 7 13 ↗ | 8 14 ↗ | 8 15 ↗ | 8 15 ↗ | 9 15 ↗ | 9 15 ↗ | 9 15 ↗ | 9 14 ↗ | 9 14 ↗ | 9 14 ↗ | 10 14 ↗ | 9 14 ↗ |
| Houston Pilots G - 75/76 | 8 13 ↗ | 8 13 ↗ | 8 13 ↗ | 8 12 ↗ | 8 13 ↗ | 8 12 ↗ | 7 10 ↗ | 7 10 ↗ | 7 10 ↗ | 7 10 ↗ | 7 12 ↗ | 7 13 ↗ | 7 14 ↗ | 8 15 ↗ | 8 15 ↗ | 8 15 ↗ | 9 16 ↗ | 9 16 ↗ | 10 15 ↗ | 10 15 ↗ | 10 15 ↗ | 10 15 ↗ | 10 15 ↗ | 10 15 ↗ |
| Houston Pilots F - 63/64 | 8 13 ↗ | 9 13 ↗ | 8 13 ↗ | 8 13 ↗ | 8 13 ↗ | 8 12 ↗ | 8 12 ↗ | 7 10 ↗ | 7 10 ↗ | 7 10 ↗ | 7 12 ↗ | 7 13 ↗ | 7 14 ↗ | 8 15 ↗ | 8 15 ↗ | 9 15 ↗ | 10 16 ↗ | 10 16 ↗ | 10 15 ↗ | 10 15 ↗ | 10 15 ↗ | 10 16 ↗ | 10 16 ↗ | 10 15 ↗ |
| Houston Pilots E - 51/52 | 9 13 ↗ | 9 14 ↗ | 9 13 ↗ | 9 13 ↗ | 8 13 ↗ | 8 13 ↗ | 8 12 ↗ | 8 12 ↗ | 8 10 ↗ | 7 12 ↗ | 7 12 ↗ | 7 13 ↗ | 8 14 ↗ | 8 15 ↗ | 8 15 ↗ | 9 15 ↗ | 10 16 ↗ | 10 16 ↗ | 10 16 ↗ | 10 16 ↗ | 10 16 ↗ | 10 16 ↗ | 10 16 ↗ | 10 16 ↗ |
| Houston Pilots D - 37/38 | 9 14 ↗ | 9 14 ↗ | 9 14 ↗ | 9 14 ↗ | 9 14 ↗ | 8 13 ↗ | 8 13 ↗ | 8 12 ↗ | 8 12 ↗ | 8 12 ↗ | 8 12 ↗ | 8 14 ↗ | 8 14 ↗ | 8 15 ↗ | 9 15 ↗ | 10 15 ↗ | 10 17 ↗ | 10 16 ↗ | 10 16 ↗ | 10 16 ↗ | 10 16 ↗ | 10 16 ↗ | 10 16 ↗ | 10 16 ↗ |
| Houston Pilots C - 25/26 | 8 13 ↗ | 9 14 ↗ | 9 14 ↗ | 9 14 ↗ | 9 14 ↗ | 8 13 ↗ | 8 13 ↗ | 8 13 ↗ | 8 12 ↗ | 8 12 ↗ | 8 12 ↗ | 8 14 ↗ | 8 14 ↗ | 9 15 ↗ | 9 15 ↗ | 10 15 ↗ | 10 16 ↗ | 10 16 ↗ | 10 15 ↗ | 10 16 ↗ | 10 16 ↗ | 10 16 ↗ | 10 16 ↗ | 10 16 ↗ |
| Houston Pilots B - 11/12 | 8 13 ↗ | 8 14 ↗ | 8 14 ↗ | 8 14 ↗ | 8 14 ↗ | 8 13 ↗ | 8 13 ↗ | 7 13 ↗ | 7 12 ↗ | 7 12 ↗ | 8 12 ↗ | 8 14 ↗ | 8 14 ↗ | 8 15 ↗ | 9 15 ↗ | 9 15 ↗ | 10 16 ↗ | 10 16 ↗ | 10 15 ↗ | 10 15 ↗ | 9 15 ↗ | 9 15 ↗ | 9 15 ↗ | 9 15 ↗ |
| Houston Pilots A - 1 & 2 Bravo | 10 15 ↗ | 10 15 ↗ | 10 15 ↗ | 10 15 ↗ | 10 15 ↗ | 10 15 ↗ | 9 14 ↗ | 9 14 ↗ | 8 13 ↗ | 8 13 ↗ | 8 13 ↗ | 8 14 ↗ | 8 14 ↗ | 8 15 ↗ | 9 15 ↗ | 9 15 ↗ | 10 16 ↗ | 10 16 ↗ | 10 15 ↗ | 10 16 ↗ | 10 16 ↗ | 10 16 ↗ | 12 16 ↗ | 12 16 ↗ |

NOTE: This is automated data that may/may not agree with the official BAM thinking that's found on the daily slides.
This data should be used as a guide only.

Houston Pilots: WED. 7/9/2025

Forecast Discussion

Precip: Hit/miss showers and storms are possible for all Stations between 5 – 11 AM. More scattered to widespread showers and storms are favored for all Stations from 12 – 9 PM. **Risks of heavy downpours, lightning, and 30-35 kt wind gusts are possible in some of these storms**

Wind: Winds will be out of the SW for most of the day. From 5PM to 9 PM, winds become variable before blowing from the SW again for the rest of the night. **N of Morgan's Point:** Winds will be at 6 – 11 kts. **S of Morgan's Point:** Winds will be at 7 - 16 kts.

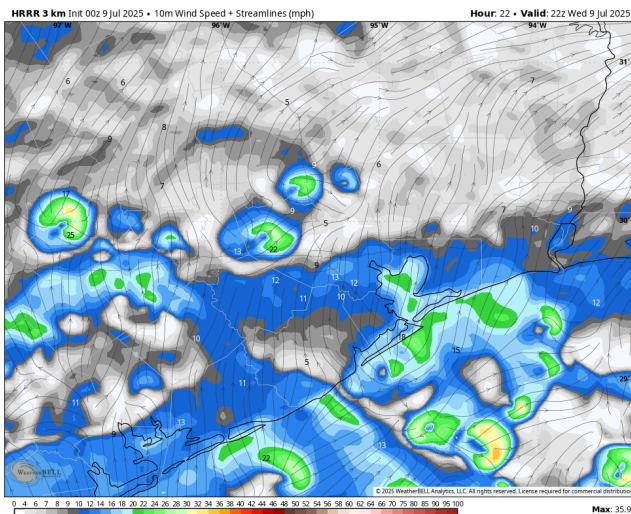
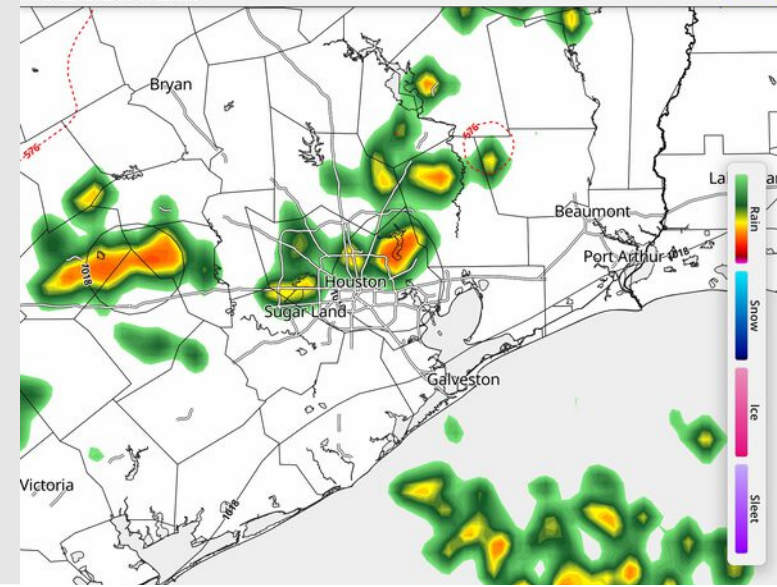
High Temps: **N of Morgan's Point:** Low 90s F. **S of Morgan's Point:** High 80s F.

Visibility: No fog concerns today, however heavier downpours may result in reduced visibilities at times.

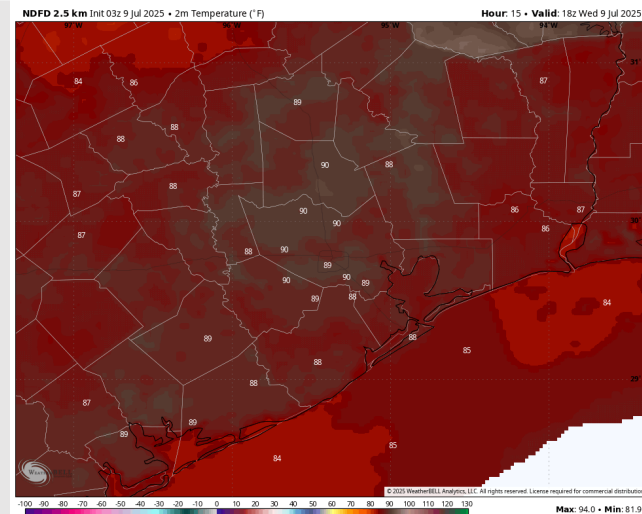
Precip Image: 6 PM CT

HRRR 1km Ref & Type | MSLP (mb) | 1000-500mb Thickness (dam)
RUN: 2025-07-09 00Z FH 023
VALID: 2025-07-09 23:00Z

Synoptic Weather
synopticwx.com Beta



Wind Speed:
5 PM CT



High Temps
Today

Houston Pilots: THU. 7/10/2025

Forecast Discussion

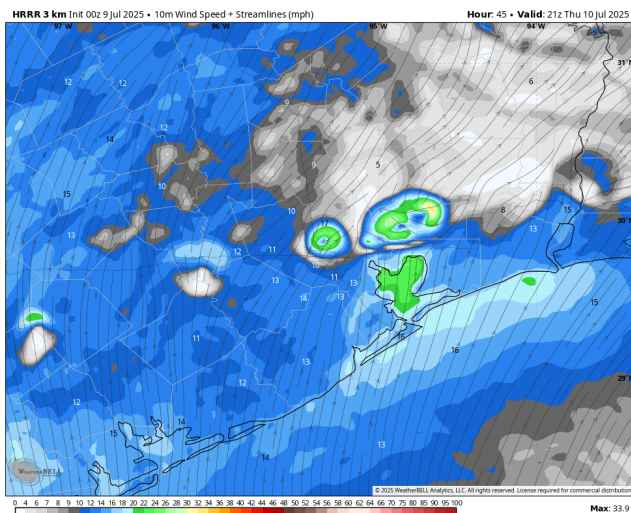
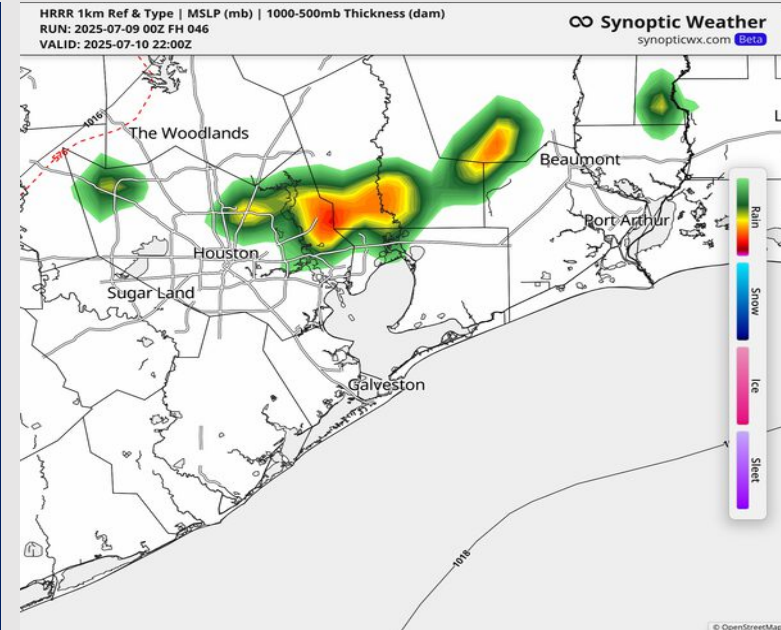
Precip: Hit/miss showers possible for Stations N of Morgan's Point from 3-8PM. **Some storms may have risks of heavy downpours and lightning.**

Wind: Winds will be out of the S/SW throughout the day. **N of Morgan's Point:** Winds will be at 3 – 12 kts. **S of Morgan's Point:** Winds will be at 7 - 15kts. **Wind gusts of 20+ kts possible for Stations S of Morgan's point from 3 PM – 7 PM.**

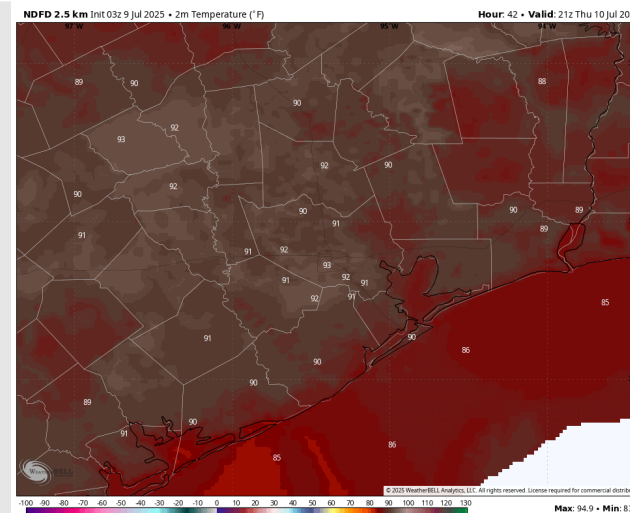
High Temps: **N of Morgan's Point:** Low 90s F. **S of Morgan's Point:** High 80s F.

Visibility: No fog concerns Thursday however heavier downpours may result in reduced visibilities at times.

Precip Image: 5 PM CT



Wind Speed:
4 PM CT



High Temps
Thursday

Houston Pilots: FRI. 7/11/2025

Forecast Discussion

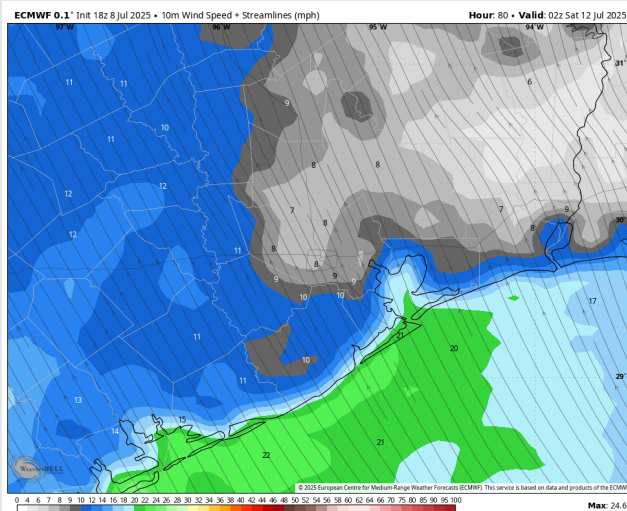
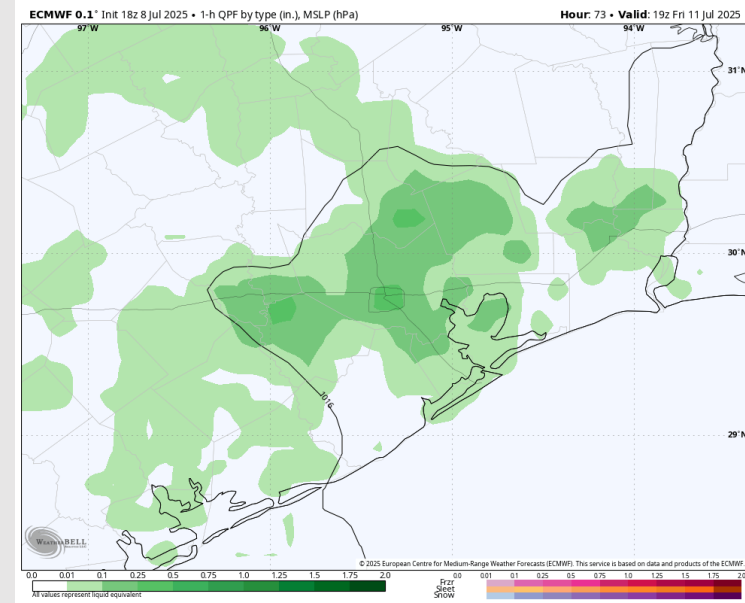
Precip: Scattered showers and storms favored for all Stations from 1PM – 7PM Friday. **Some storms will hold risks for heavy downpours and 20+ kt wind gusts.**

Wind: Winds will be out of the S/SE throughout the day. **N of Morgan's Point:** Winds will be at 4 – 10 kts. **S of Morgan's Point:** Winds will be at 11 – 16 kts.

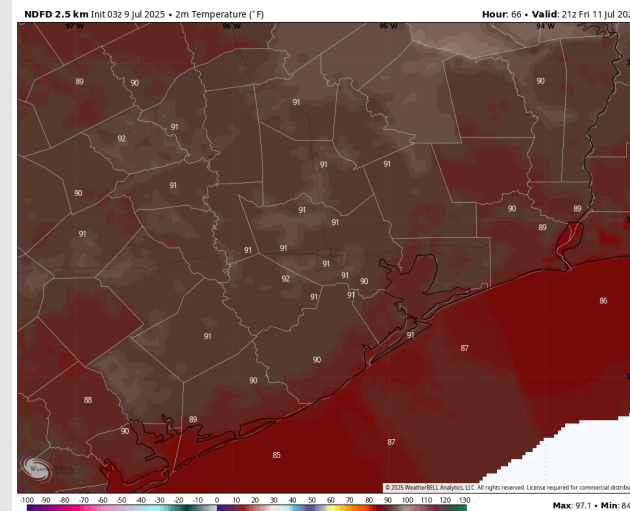
High Temps: **N of Morgan's Point:** Low 90s F. **S of Morgan's Point:** High 80s F.

Visibility: No fog concerns Friday, but visibilities can be reduced under heavy downpours.

Precip Image: 2 PM CT



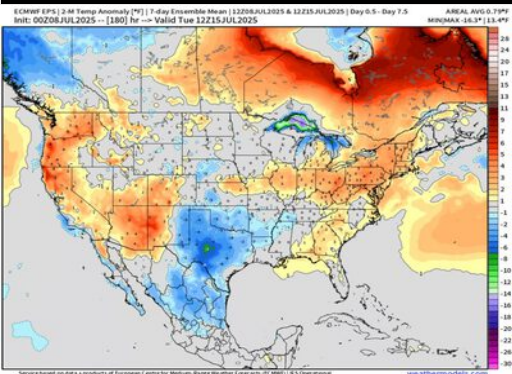
Wind Speed:
9 PM CT



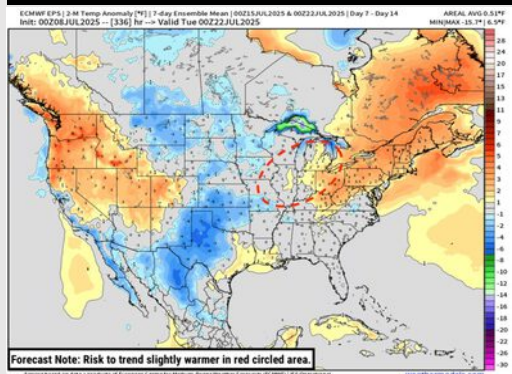
High Temps
Friday

Houston Pilots: 7/8/25

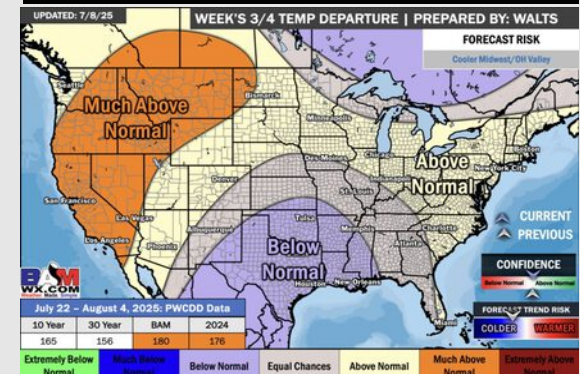
Next 7 Day Temperature Departure



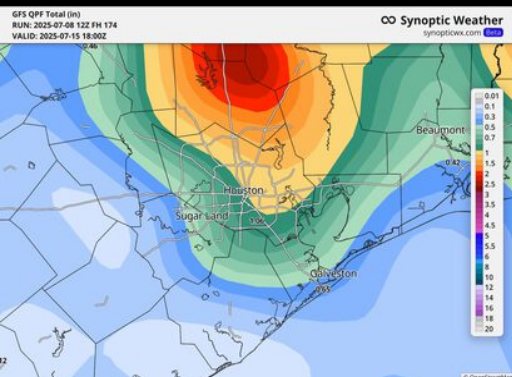
8-14 Day Temperature Departure



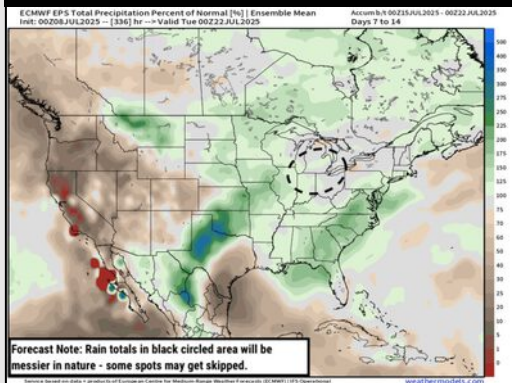
15-30 Day Temperature Departure



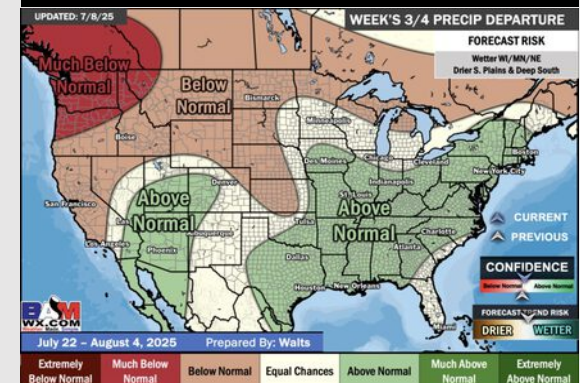
Next 7 Day Total Precipitation



8-14 Day % of Average Precip.



15-30 Day % of Average Precip.



- Temps are expected to be near normal to below normal the next 7 days. Scattered rain chances expected throughout the week.
- Warmer than normal temps and below normal rain chances are favored for days 8 – 14.
- Below normal temperatures are favored into late July and early August along with above normal rainfall chances.