

Houston Pilots Forecast Package



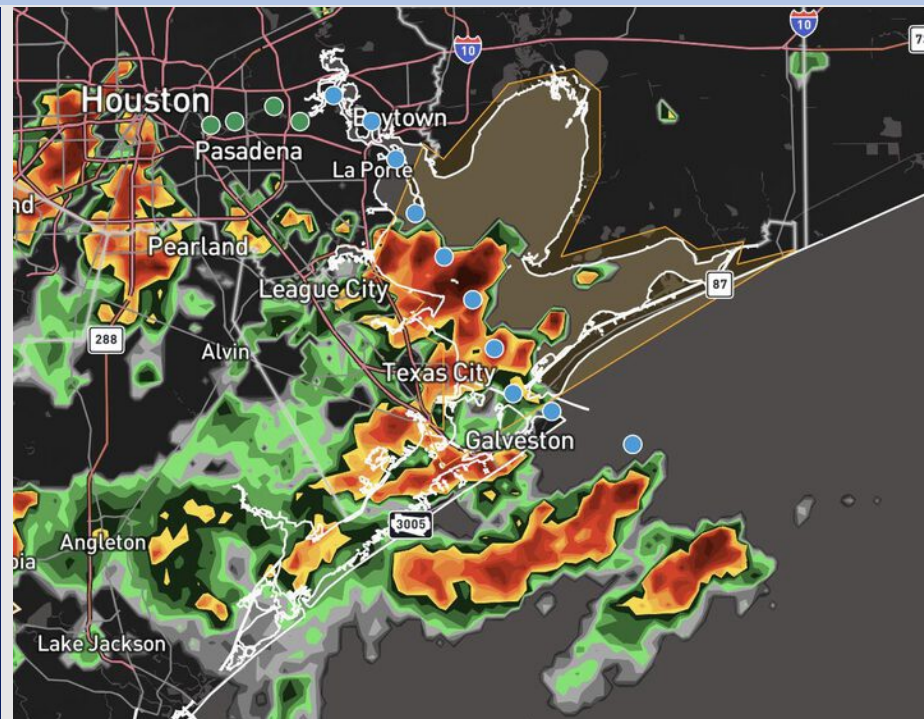
Updated: 12:50 PM CT

Wednesday, July 9, 2025

Forecaster: Lydia Purlee

Weather Headlines

- Scattered showers and storms expected from now until 7 PM today. **Some of these storms will have risks of heavy downpours, lightning, and wind gusts of 30-40 kts.**
- **Some stronger storms with risks for heavy downpours, lightning, and wind gusts of up to 35 kts will be possible over the next 72 hours.**
- No tropical impacts favored for Houston over the next 7 days.



Current Radar: 12:50 PM CT

As always, please do not hesitate to reach out to us with any forecast questions at **(317)-560-8122**. **Press 1 for forecast questions.**

You can also access real-time forecast updates and 24/7 meteorological chat assistance on your [Clarity](#) app. Click [here](#) for login assistance.

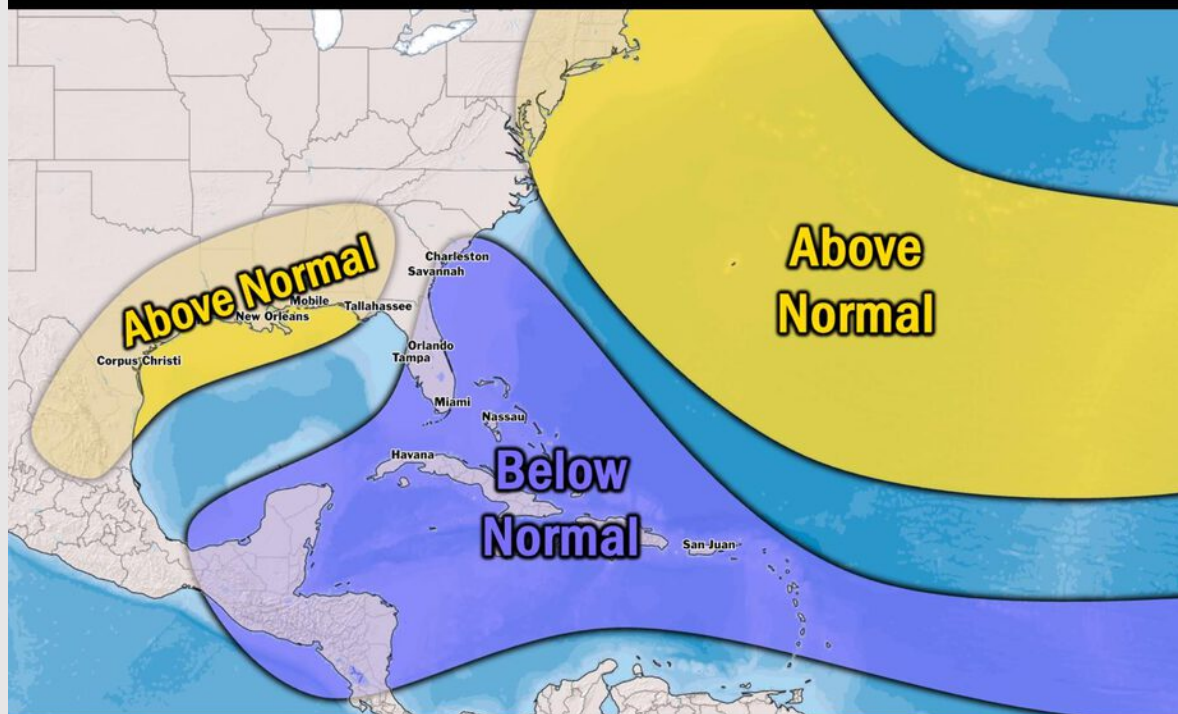


Houston Pilots Tropical Update

Seasonal Hurricane Outlook

2025 HURRICANE SEASON

Updated Issued: Wednesday, June 25, 2025



KEY SEASON NOTES

15 - 19

Named Storms
10 Year Avg: 17.8

6 - 9

Hurricanes
10 Year Avg: 8.2

2 - 4

Major Hurricanes
10 Year Avg: 3.8

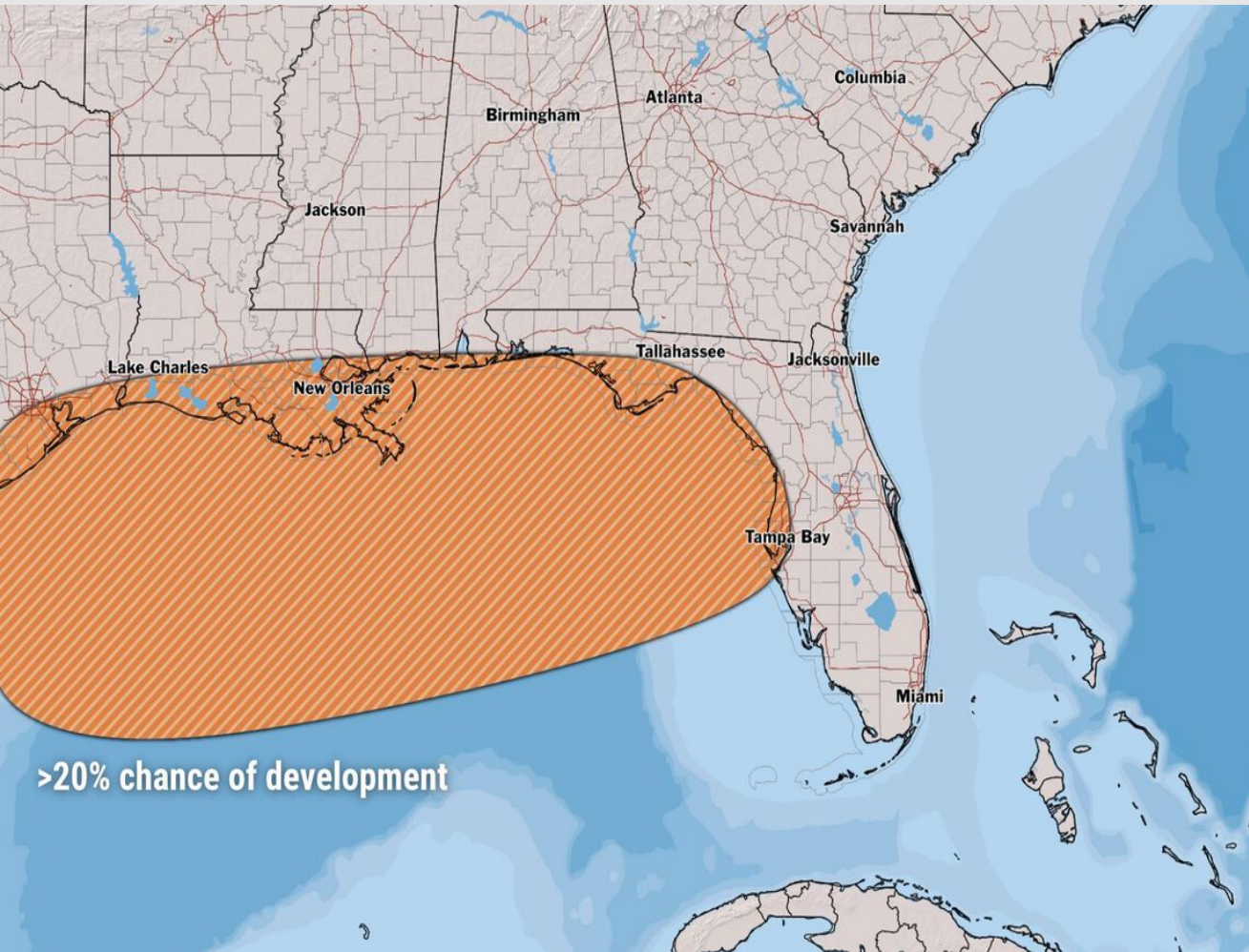
Graphic to the left represents our favored seasonal outlook for the 2025 Hurricane Season. Conditions expected to be more favorable for tropical development within the Gulf this season.

No notable tropical development is expected over the next 7 days.

[Click here for the video!](#)

Houston Pilots Tropical Update

10 Day Tropical Outlook



Monitoring a low chance for tropical development in the N Gulf from July 16 – 22. Confidence on this risk is lower than normal.

Currently, we are not favoring any tropical impacts for Houston over the next 10 days.

Houston Pilots Visibility Chart (miles)



Visibility	Wed 2 pm	Wed 3 pm	Wed 4 pm	Wed 5 pm	Wed 6 pm	Wed 7 pm	Wed 8 pm	Wed 9 pm	Wed 10 pm	Wed 11 pm	Thu 12 am	Thu 1 am	Thu 2 am	Thu 3 am	Thu 4 am	Thu 5 am	Thu 6 am	Thu 7 am	Thu 8 am	Thu 9 am	Thu 10 am	Thu 11 am	Thu 12 pm	Thu 1 pm
Houston Pilots N - 610 Bridge	10	10	10	10	10	10	10	10	10	10	10	10	10	10	10	10	10	10	10	10	10	10	10	10
Houston Pilots M - Kinder 1	10	10	10	10	10	10	10	10	10	10	10	10	10	10	10	10	10	10	10	10	10	10	10	10
Houston Pilots L - Greens Bayou	10	10	10	10	10	10	10	10	10	10	10	10	10	10	10	10	10	10	10	10	10	10	10	10
Houston Pilots K - Shell Crude	10	10	10	10	10	10	10	10	10	10	10	10	10	10	10	10	10	10	10	10	10	10	10	10
Houston Pilots J - Lynchburg Ferries	10	10	10	7.9	10	10	10	10	10	10	10	10	10	10	10	10	10	10	10	10	10	10	10	10
Houston Pilots I - Exxon 3	10	10	10	7.9	10	10	10	10	10	10	10	10	10	10	10	10	10	10	10	10	10	10	10	10
Houston Pilots H - Morgans Point	10	10	10	7.9	10	10	10	10	10	10	10	10	10	10	10	10	10	10	10	10	10	10	10	10
Houston Pilots G - 75/76	10	10	10	10	10	7.9	9	10	10	10	10	10	10	10	10	10	10	10	10	10	10	10	10	10
Houston Pilots F - 63/64	10	10	10	10	10	7.9	9	10	10	10	10	10	10	10	10	10	10	10	10	10	10	10	10	10
Houston Pilots E - 51/52	10	10	10	10	10	7.9	9	10	10	10	10	10	10	10	10	10	10	10	10	10	10	10	10	10
Houston Pilots D - 37/38	10	10	10	10	10	7.9	9	10	10	10	10	10	10	10	10	10	10	10	10	10	10	10	10	10
Houston Pilots C - 25/26	10	10	10	10	10	7.9	9	10	10	10	10	10	10	10	10	10	10	10	10	10	10	10	10	10
Houston Pilots B - 11/12	10	10	10	10	10	7.9	10	10	10	10	10	10	10	10	10	10	10	10	10	10	10	10	10	10
Houston Pilots A - 1 & 2 Bravo	10	10	10	10	10	10	10	10	10	10	10	10	10	10	10	10	10	10	10	10	10	10	10	10

NOTE: This is automated data that may/may not agree with the official BAM thinking that's found on the daily slides or special visibility report slides. This data should be used as a guide only

Houston Pilots Wind Chart



Sustained Wind 10 Knots
Gusts 15 Knots
Wind from the SE



Wind	Wed 2 pm	Wed 3 pm	Wed 4 pm	Wed 5 pm	Wed 6 pm	Wed 7 pm	Wed 8 pm	Wed 9 pm	Wed 10 pm	Wed 11 pm	Thu 12 am	Thu 1 am	Thu 2 am	Thu 3 am	Thu 4 am	Thu 5 am	Thu 6 am	Thu 7 am	Thu 8 am	Thu 9 am	Thu 10 am	Thu 11 am	Thu 12 pm	Thu 1 pm
Houston Pilots N - 610 Bridge	6 13 ↗	6 13 ↗	6 12 ↗	6 13 ↗	6 12 ↗	6 10 ↗	6 9 ↗	5 10 ↗	5 10 ↗	6 10 ↗	5 9 ↗	5 9 ↗	5 10 ↗	5 9 ↗	5 9 ↗	5 9 ↗	5 9 ↗	5 9 ↗	5 10 ↗	5 10 ↗	6 12 ↗	6 13 ↗	7 14 ↗	7 14 ↗
Houston Pilots M - Kinder 1	6 13 ↗	6 13 ↗	6 12 ↗	6 13 ↗	6 12 ↗	6 10 ↗	6 9 ↗	5 10 ↗	5 10 ↗	6 10 ↗	5 9 ↗	5 9 ↗	5 10 ↗	5 9 ↗	5 9 ↗	5 9 ↗	5 9 ↗	5 9 ↗	5 10 ↗	5 10 ↗	6 12 ↗	6 13 ↗	7 14 ↗	7 14 ↗
Houston Pilots L - Greens Bayou	6 13 ↗	6 13 ↗	6 12 ↗	6 13 ↗	6 12 ↗	6 10 ↗	6 9 ↗	5 10 ↗	5 9 ↗	6 10 ↗	5 9 ↗	5 9 ↗	5 9 ↗	5 9 ↗	5 9 ↗	5 9 ↗	5 9 ↗	5 9 ↗	5 9 ↗	5 9 ↗	6 10 ↗	6 13 ↗	7 14 ↗	7 14 ↗
Houston Pilots K - Shell Crude	6 13 ↗	6 13 ↗	6 13 ↗	6 13 ↗	6 12 ↗	6 10 ↗	6 9 ↗	5 10 ↗	5 10 ↗	6 10 ↗	5 9 ↗	5 9 ↗	5 9 ↗	5 9 ↗	5 9 ↗	5 9 ↗	5 9 ↗	5 9 ↗	5 9 ↗	5 9 ↗	6 10 ↗	6 13 ↗	7 14 ↗	7 14 ↗
Houston Pilots J - Lynchburg Ferries	6 13 ↗	6 13 ↗	6 12 ↗	6 13 ↗	6 12 ↗	6 12 ↗	6 10 ↗	5 10 ↗	5 9 ↗	6 10 ↗	5 9 ↗	5 9 ↗	5 9 ↗	5 8 ↗	5 8 ↗	5 9 ↗	5 8 ↗	5 8 ↗	5 8 ↗	5 9 ↗	6 10 ↗	6 13 ↗	7 14 ↗	7 14 ↗
Houston Pilots I - Exxon 3	8 13 ↗	8 14 ↗	8 14 ↗	8 13 ↗	8 14 ↗	8 13 ↗	8 13 ↗	8 13 ↗	8 13 ↗	9 13 ↗	8 13 ↗	8 13 ↗	8 13 ↗	8 12 ↗	8 12 ↗	8 12 ↗	8 12 ↗	8 12 ↗	8 13 ↗	8 12 ↗	8 13 ↗	8 14 ↗	8 15 ↗	8 14 ↗
Houston Pilots H - Morgans Point	8 13 ↗	8 14 ↗	8 14 ↗	8 13 ↗	8 14 ↗	8 13 ↗	8 13 ↗	8 14 ↗	8 13 ↗	9 14 ↗	8 13 ↗	8 13 ↗	8 13 ↗	8 12 ↗	8 12 ↗	8 12 ↗	8 12 ↗	8 12 ↗	8 13 ↗	8 12 ↗	8 13 ↗	8 14 ↗	8 15 ↗	8 14 ↗
Houston Pilots G - 75/76	8 14 ↗	8 15 ↗	8 15 ↗	8 14 ↗	8 15 ↗	9 14 ↗	10 14 ↗	10 15 ↗	10 15 ↗	10 15 ↗	10 15 ↗	10 14 ↗	10 14 ↗	9 14 ↗	9 14 ↗	9 14 ↗	9 14 ↗	9 14 ↗	9 13 ↗	9 14 ↗	9 14 ↗	9 15 ↗	8 15 ↗	8 15 ↗
Houston Pilots F - 63/64	8 14 ↗	8 15 ↗	8 15 ↗	8 14 ↗	9 15 ↗	9 14 ↗	10 14 ↗	10 15 ↗	10 15 ↗	10 15 ↗	10 15 ↗	10 14 ↗	10 14 ↗	9 14 ↗	9 14 ↗	9 14 ↗	9 14 ↗	9 14 ↗	9 14 ↗	9 14 ↗	9 15 ↗	9 15 ↗	8 15 ↗	8 15 ↗
Houston Pilots E - 51/52	8 14 ↗	8 15 ↗	8 15 ↗	9 15 ↗	9 15 ↗	10 15 ↗	10 15 ↗	10 15 ↗	10 15 ↗	10 15 ↗	10 15 ↗	10 15 ↗	10 15 ↗	10 15 ↗	10 15 ↗	10 15 ↗	10 15 ↗	10 15 ↗	10 15 ↗	10 15 ↗	10 15 ↗	10 15 ↗	9 15 ↗	9 15 ↗
Houston Pilots D - 37/38	8 14 ↗	8 15 ↗	9 15 ↗	9 15 ↗	9 15 ↗	10 15 ↗	10 15 ↗	10 15 ↗	10 15 ↗	10 16 ↗	10 15 ↗	10 15 ↗	10 15 ↗	10 15 ↗	10 15 ↗	10 15 ↗	10 15 ↗	10 15 ↗	10 15 ↗	10 15 ↗	10 15 ↗	10 16 ↗	10 15 ↗	9 15 ↗
Houston Pilots C - 25/26	9 15 ↗	9 15 ↗	9 15 ↗	9 15 ↗	9 15 ↗	10 15 ↗	10 15 ↗	10 15 ↗	10 15 ↗	10 15 ↗	10 15 ↗	10 15 ↗	10 15 ↗	10 15 ↗	10 15 ↗	10 15 ↗	10 15 ↗	10 16 ↗	10 15 ↗	10 16 ↗	10 16 ↗	10 16 ↗	10 16 ↗	10 16 ↗
Houston Pilots B - 11/12	8 14 ↗	8 15 ↗	9 15 ↗	9 15 ↗	9 15 ↗	9 14 ↗	9 14 ↗	9 15 ↗	9 15 ↗	9 15 ↗	9 15 ↗	8 15 ↗	8 15 ↗	8 15 ↗	8 15 ↗	9 15 ↗	9 16 ↗	9 16 ↗	9 16 ↗	9 16 ↗	9 16 ↗	9 16 ↗	10 16 ↗	10 16 ↗
Houston Pilots A - 1 & 2 Bravo	8 14 ↗	8 15 ↗	9 15 ↗	9 15 ↗	10 15 ↗	10 15 ↗	10 15 ↗	10 15 ↗	10 15 ↗	10 16 ↗	12 16 ↗	12 16 ↗	12 17 ↗	12 17 ↗	12 17 ↗	13 17 ↗	13 17 ↗	13 17 ↗	13 17 ↗	12 17 ↗	12 17 ↗	10 17 ↗	10 16 ↗	10 16 ↗

NOTE: This is automated data that may/may not agree with the official BAM thinking that's found on the daily slides.
This data should be used as a guide only.

Houston Pilots: WED. 7/9/2025

Forecast Discussion

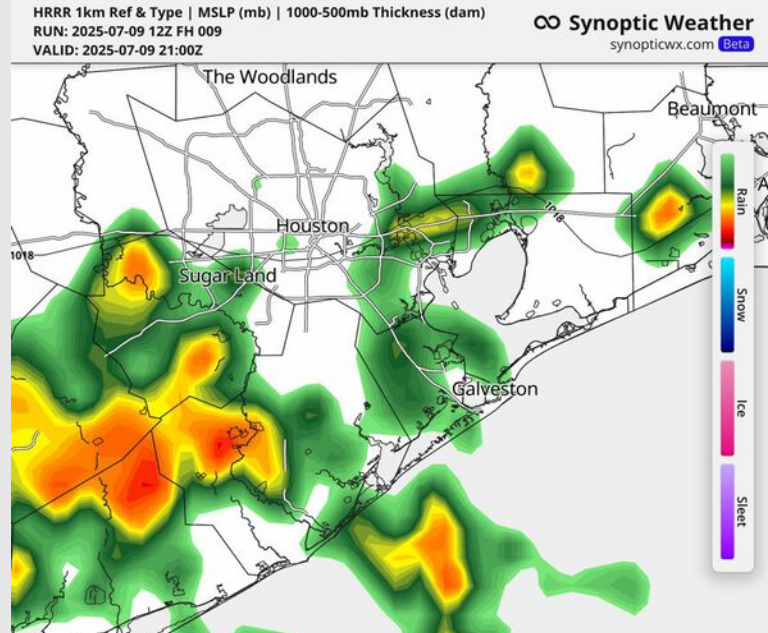
Precip: Scattered to widespread showers and storms are favored for all Stations from now until 7 PM. The timeframe with the highest chance of seeing strong to severe storms are from now to around 4 PM. **Risks of heavy downpours, lightning, and 30-40 kt wind gusts are possible in some of these storms.**

Wind: Winds will be out of the SW today. **N of Morgan's Point:** Winds will range from 6 – 12 kts. **S of Morgan's Point:** Winds will range from 8 - 17 kts. **Some wind gusts S of Morgan's Point could get up to 20 kts from now until 3 PM.**

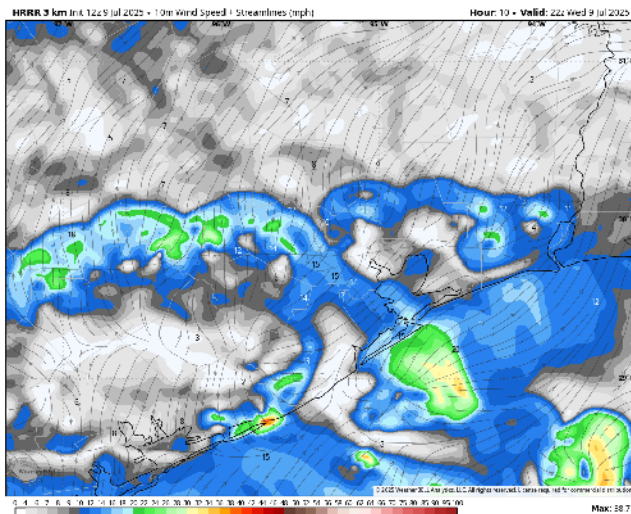
Low Temps: **N of Morgan's Point:** High 70s F. **S of Morgan's Point:** Low 80s F.

Visibility: No fog concerns today, however heavier downpours may result in reduced visibilities at times.

Precip Image: 4 PM CT



Wind Speed:
5 PM CT



Houston Pilots: THU. 7/10/2025

Forecast Discussion

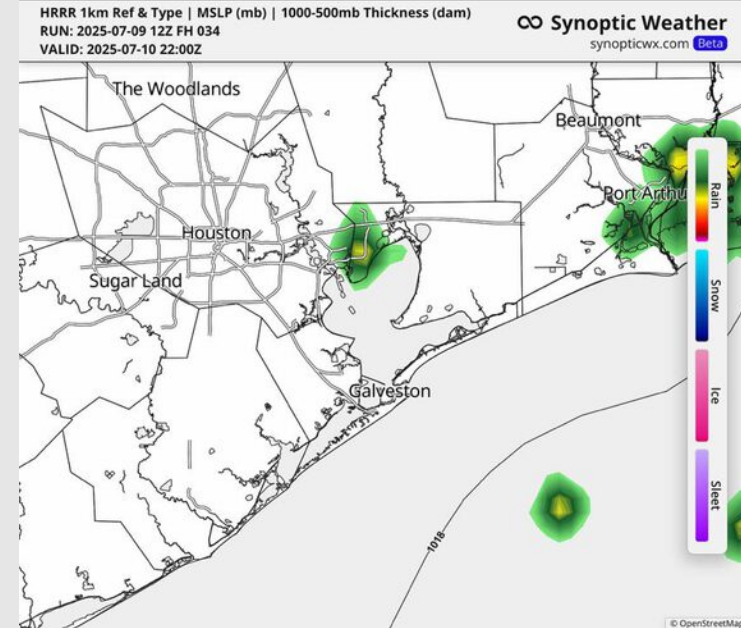
Precip: Hit/miss showers possible for Stations N of Morgan's Point from 3 – 7 PM. **Some storms may have risks of heavy downpours, lightning, and wind gusts of 30 kts.**

Wind: Winds will be out of the SW throughout the day. **N of Morgan's Point:** Winds will be at 7 – 10 kts. **S of Morgan's Point:** Winds will be at 11 – 13 kts.

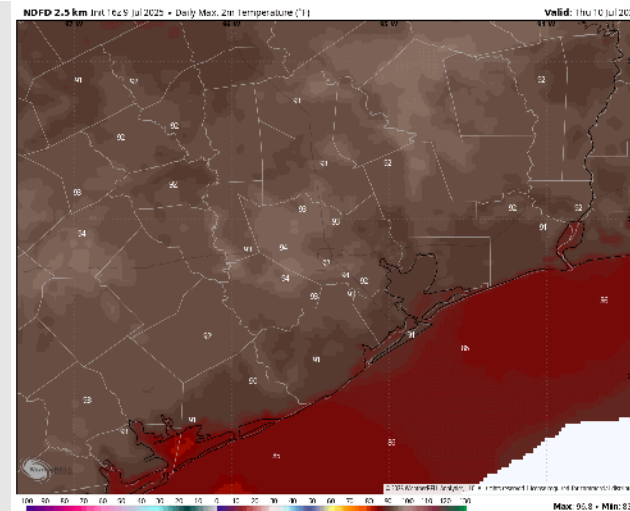
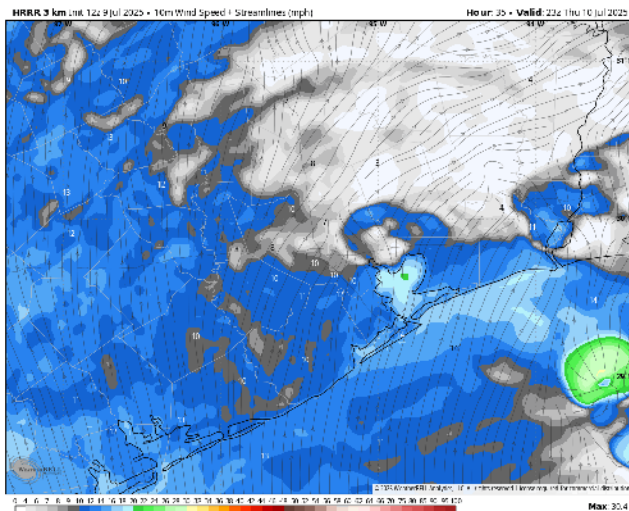
High Temps: **N of Morgan's Point:** Low 90s F. **S of Morgan's Point:** High 80s F.

Visibility: No fog concerns Thursday however heavier downpours may result in reduced visibilities at times.

Precip Image: 5 PM CT



Wind Speed:
6 PM CT

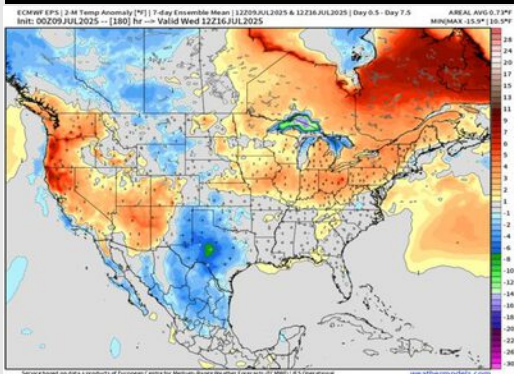


High Temps
Thursday

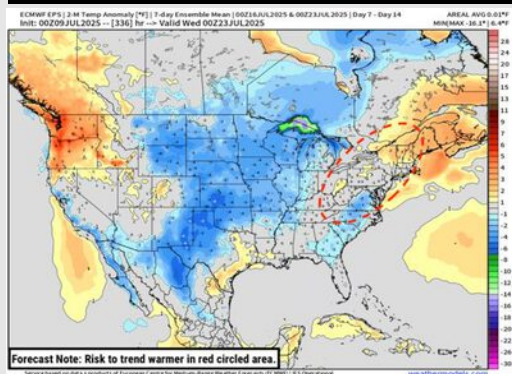
High Temps Friday

Houston Pilots: 7/8/25

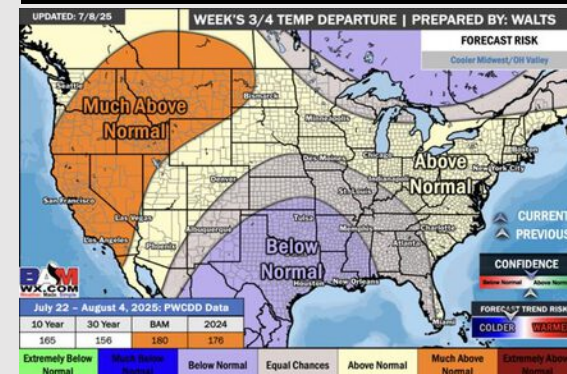
Next 7 Day Temperature Departure



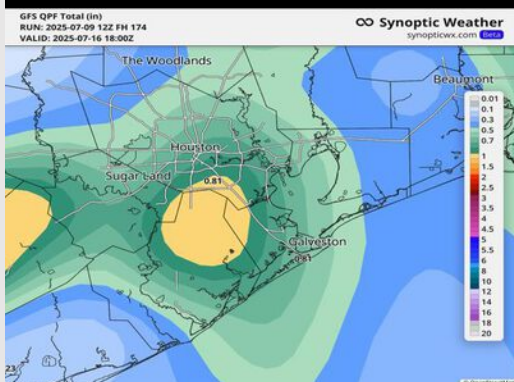
8-14 Day Temperature Departure



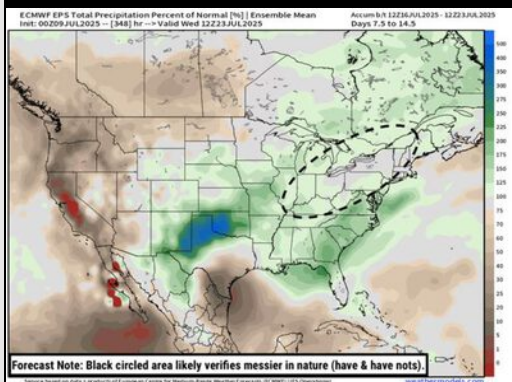
15-30 Day Temperature Departure



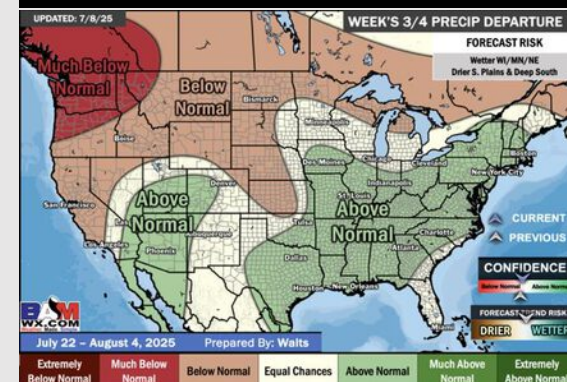
Next 7 Day Total Precipitation



8-14 Day % of Average Precip.



15-30 Day % of Average Precip.



- Temps are expected to be near normal to below normal the next 7 days. Scattered rain chances expected throughout the week.
- Warmer than normal temps and below normal rain chances are favored for days 8 – 14.
- Below normal temperatures are favored into late July and early August along with above normal rainfall chances.