

Houston Pilots Forecast Package



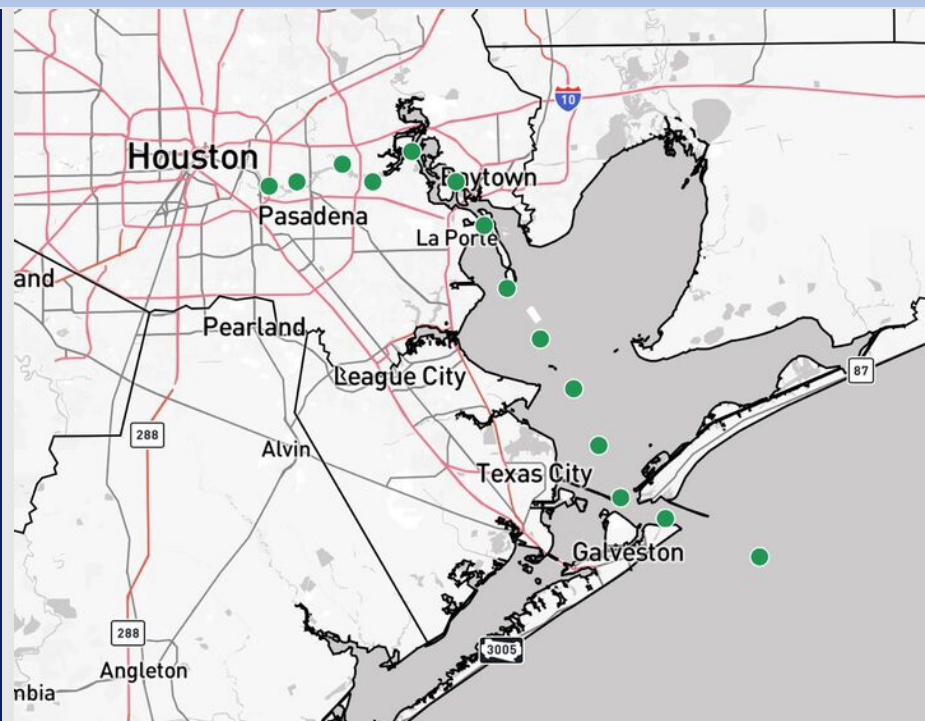
Updated: 12:15 PM CT

Sunday, July 6, 2025

Forecaster: Hope Kleitsch

Weather Headlines

- Scattered showers/storms will continue across the area into early next week.
- No tropical impacts favored for Houston over the next 7 days.



Current Radar: 12:15 PM CT

As always, please do not hesitate to reach out to us with any forecast questions at **(317)-560-8122**. Press 1 for forecast questions.

You can also access real-time forecast updates and 24/7 meteorological chat assistance on your **Clarity** app. Click [here](#) for login assistance.

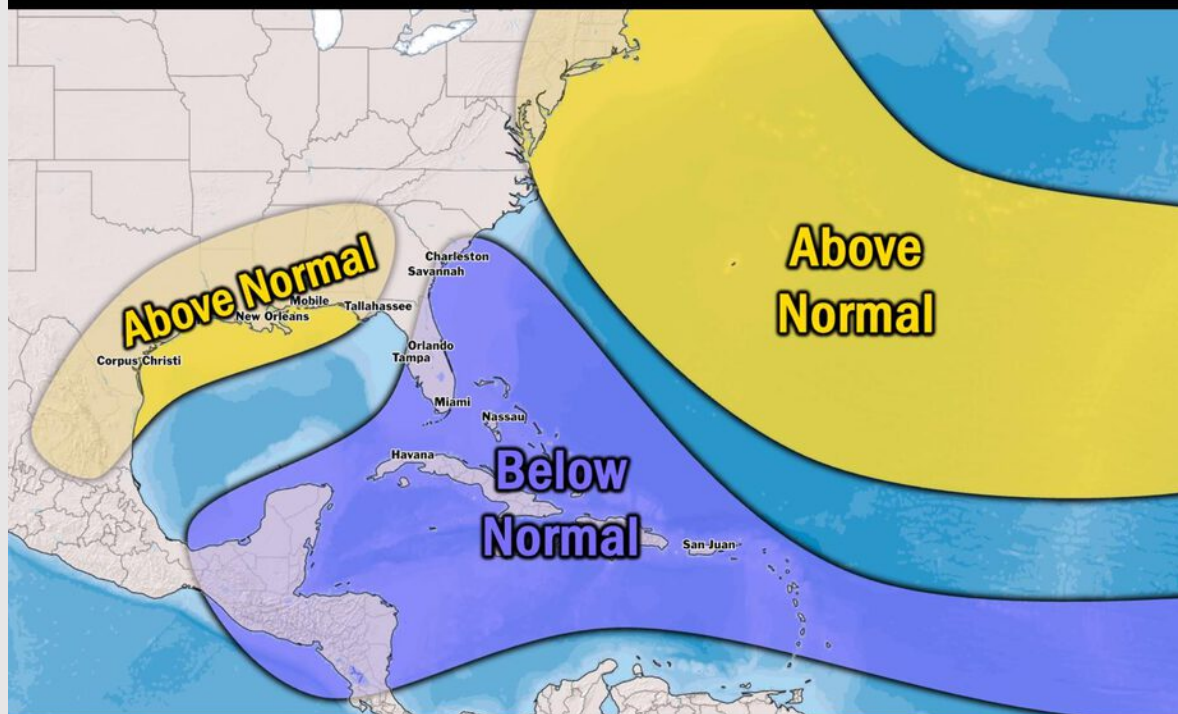


Houston Pilots Tropical Update

Seasonal Hurricane Outlook

2025 HURRICANE SEASON

Updated Issued: Wednesday, June 25, 2025



KEY SEASON NOTES

15 - 19

Named Storms
10 Year Avg: 17.8

6 - 9

Hurricanes
10 Year Avg: 8.2

2 - 4

Major Hurricanes
10 Year Avg: 3.8

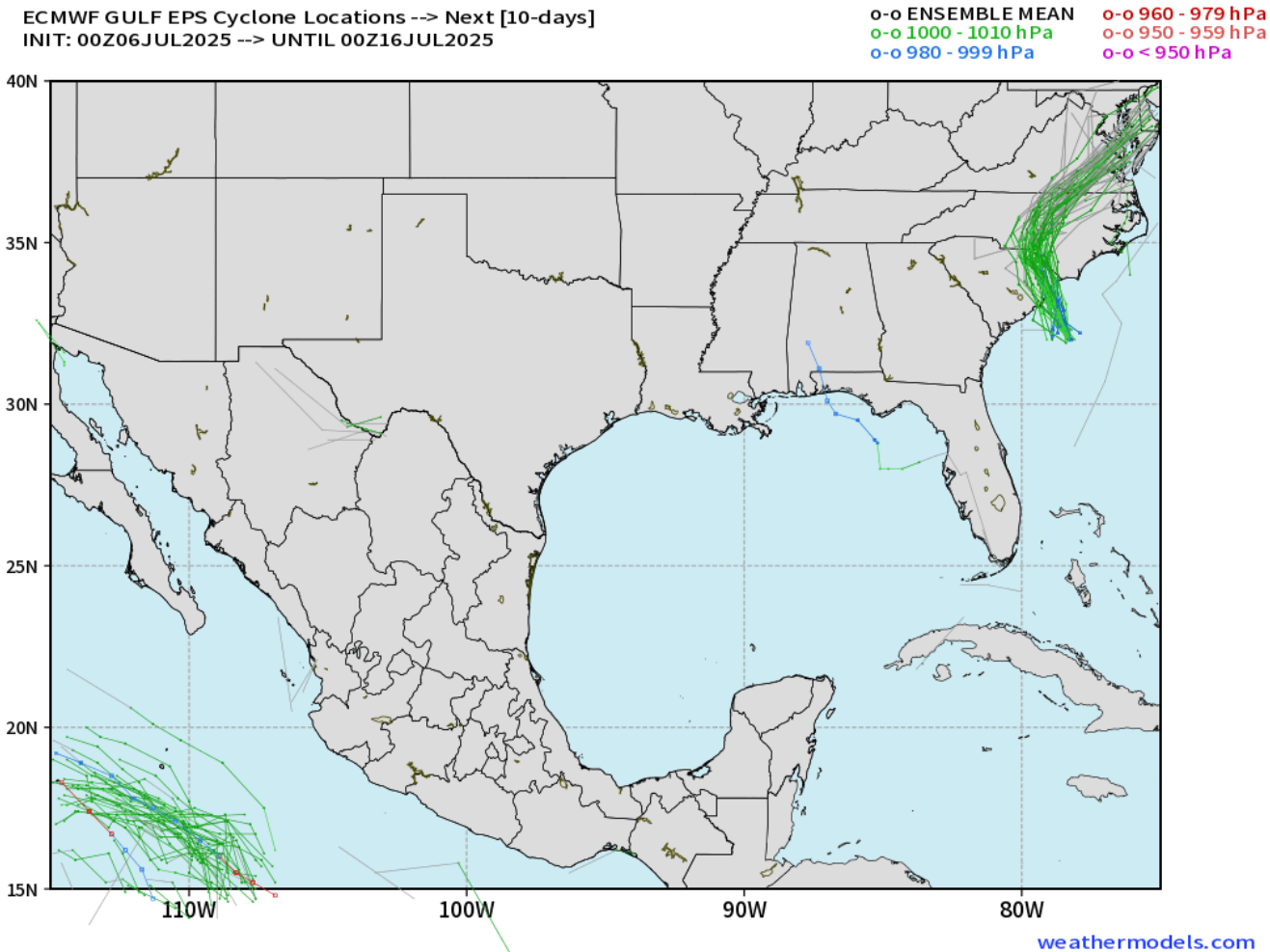
Graphic to the left represents our favored seasonal outlook for the 2025 Hurricane Season. Conditions expected to be more favorable for tropical development within the Gulf this season.

No notable tropical development is expected over the next 7 days.

[Click here for the video!](#)

Houston Pilots Tropical Update

10 Day Tropical Outlook



Tropical Depression Chantel has made landfall in the Carolinas and will continue to work up the east coast.

Currently, we are not favoring any tropical impacts for Houston over the next 10 days.

Houston Pilots Visibility Chart (miles)



Visibility	Sun 2 pm	Sun 3 pm	Sun 4 pm	Sun 5 pm	Sun 6 pm	Sun 7 pm	Sun 8 pm	Sun 9 pm	Sun 10 pm	Sun 11 pm	Mon 12 am	Mon 1 am	Mon 2 am	Mon 3 am	Mon 4 am	Mon 5 am	Mon 6 am	Mon 7 am	Mon 8 am	Mon 9 am	Mon 10 am	Mon 11 am	Mon 12 pm	Mon 1 pm
Houston Pilots N - 610 Bridge	10	10	10	10	10	10	10	10	10	10	10	10	10	10	10	10	10	10	9	10	10	10	10	10
Houston Pilots M - Kinder 1	10	10	10	10	10	10	10	10	10	10	10	10	10	10	10	10	10	10	9	10	10	10	10	10
Houston Pilots L - Greens Bayou	10	10	10	10	10	10	10	10	10	10	10	10	10	10	10	10	10	10	9	10	10	10	10	10
Houston Pilots K - Shell Crude	10	10	10	10	10	10	10	10	10	10	10	10	10	10	10	10	10	10	9	10	10	10	10	10
Houston Pilots J - Lynchburg Ferries	10	10	10	10	10	10	10	10	10	10	10	10	10	10	10	10	10	10	9	10	10	10	10	10
Houston Pilots I - Exxon 3	10	10	10	10	10	10	10	10	10	10	10	10	10	10	10	10	10	10	10	10	10	10	10	10
Houston Pilots H - Morgans Point	10	10	10	10	10	10	10	10	10	10	10	10	10	10	10	10	10	10	10	10	10	10	10	10
Houston Pilots G - 75/76	10	10	10	10	10	10	10	10	10	10	10	10	10	10	10	10	10	10	10	10	10	10	10	10
Houston Pilots F - 63/64	10	10	10	10	10	10	10	10	10	10	10	10	10	10	10	10	10	10	10	10	10	10	10	10
Houston Pilots E - 51/52	10	10	10	10	10	10	10	10	10	10	10	10	10	10	10	10	10	10	10	10	10	10	10	10
Houston Pilots D - 37/38	10	10	10	10	10	10	10	10	10	10	10	10	10	10	10	10	10	10	10	10	10	10	10	10
Houston Pilots C - 25/26	10	10	10	10	10	10	10	10	10	10	10	10	10	10	10	10	10	10	10	10	10	10	10	10
Houston Pilots B - 11/12	10	10	10	10	10	10	10	10	10	10	10	10	10	10	10	10	10	10	10	10	10	10	10	10
Houston Pilots A - 1 & 2 Bravo	10	10	10	10	10	10	10	10	10	10	10	10	10	10	10	10	10	10	10	10	10	10	10	10

NOTE: This is automated data that may/may not agree with the official BAM thinking that's found on the daily slides or special visibility report slides. This data should be used as a guide only

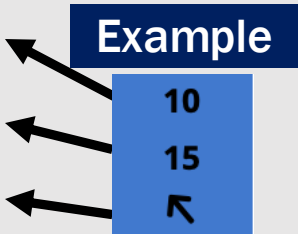
Houston Pilots Wind Chart



Sustained Wind 10 Knots

Gusts 15 Knots

Wind from the SE



Wind	Sun 2 pm	Sun 3 pm	Sun 4 pm	Sun 5 pm	Sun 6 pm	Sun 7 pm	Sun 8 pm	Sun 9 pm	Sun 10 pm	Sun 11 pm	Mon 12 am	Mon 1 am	Mon 2 am	Mon 3 am	Mon 4 am	Mon 5 am	Mon 6 am	Mon 7 am	Mon 8 am	Mon 9 am	Mon 10 am	Mon 11 am	Mon 12 pm	Mon 1 pm
Houston Pilots N - 610 Bridge	7 15 ↗	8 16 ↗	8 16 ↗	8 17 ↗	8 16 ↗	8 16 ↗	8 15 ↗	7 14 ↗	6 13 ↗	6 10 ↗	5 9 ↗	3 8 ↗	3 7 ↗	3 6 ↗	3 6 ↗	3 5 ↗	2 5 ↗	2 5 ↗	2 5 ↗	2 6 ↗	3 7 ↗	3 8 ↗	6 10 ↗	6 12 ↗
Houston Pilots M - Kinder 1	7 15 ↗	8 16 ↗	8 16 ↗	9 17 ↗	8 16 ↗	8 16 ↗	8 15 ↗	7 14 ↗	6 13 ↗	6 10 ↗	5 9 ↗	3 8 ↗	3 7 ↗	3 6 ↗	3 6 ↗	3 5 ↗	2 5 ↗	2 5 ↗	2 5 ↗	2 6 ↗	3 7 ↗	3 8 ↗	6 10 ↗	6 12 ↗
Houston Pilots L - Greens Bayou	8 15 ↗	8 16 ↗	8 16 ↗	9 17 ↗	8 16 ↗	8 16 ↗	8 15 ↗	7 14 ↗	6 12 ↗	5 9 ↗	3 8 ↗	3 7 ↗	3 7 ↗	3 6 ↗	2 6 ↗	2 5 ↗	2 5 ↗	1 5 ↗	1 5 ↗	2 6 ↗	3 7 ↗	3 8 ↗	6 10 ↗	6 12 ↗
Houston Pilots K - Shell Crude	8 15 ↗	8 16 ↗	9 16 ↗	9 17 ↗	9 16 ↗	8 16 ↗	8 15 ↗	7 14 ↗	6 12 ↗	5 9 ↗	3 8 ↗	3 7 ↗	3 6 ↗	3 6 ↗	2 6 ↗	2 5 ↗	2 5 ↗	1 5 ↗	1 5 ↗	2 6 ↗	3 7 ↗	3 8 ↗	6 10 ↗	6 12 ↗
Houston Pilots J - Lynchburg Ferries	8 15 ↗	8 16 ↗	8 16 ↗	9 17 ↗	8 16 ↗	8 16 ↗	8 15 ↗	7 14 ↗	6 12 ↗	5 9 ↗	3 8 ↗	3 7 ↗	3 6 ↗	2 5 ↗	2 5 ↗	2 5 ↗	1 5 ↗	1 5 ↗	1 5 ↗	1 6 ↗	2 7 ↗	3 8 ↗	6 10 ↗	6 13 ↗
Houston Pilots I - Exxon 3	10 16 ↗	10 17 ↗	12 18 ↗	13 18 ↗	13 18 ↗	13 18 ↗	12 16 ↗	10 15 ↗	10 14 ↗	9 13 ↗	8 12 ↗	7 10 ↗	7 9 ↗	6 8 ↗	6 8 ↗	6 8 ↗	5 7 ↗	3 6 ↗	3 6 ↗	5 7 ↗	5 7 ↗	6 9 ↗	7 12 ↗	8 14 ↗
Houston Pilots H - Morgans Point	10 16 ↗	10 17 ↗	12 18 ↗	13 18 ↗	13 18 ↗	13 18 ↗	12 16 ↗	10 15 ↗	10 14 ↗	9 13 ↗	8 12 ↗	7 10 ↗	6 9 ↗	6 8 ↗	6 8 ↗	6 8 ↗	5 7 ↗	5 7 ↗	5 7 ↗	5 7 ↗	6 8 ↗	6 9 ↗	7 12 ↗	8 14 ↗
Houston Pilots G - 75/76	9 16 ↗	10 17 ↗	12 18 ↗	13 20 ↗	13 18 ↗	13 18 ↗	13 17 ↗	12 16 ↗	10 15 ↗	10 14 ↗	8 13 ↗	8 12 ↗	8 12 ↗	7 10 ↗	7 10 ↗	7 10 ↗	6 9 ↗	6 8 ↗	6 8 ↗	6 8 ↗	6 9 ↗	6 10 ↗	7 13 ↗	8 14 ↗
Houston Pilots F - 63/64	9 16 ↗	10 17 ↗	10 17 ↗	12 18 ↗	12 18 ↗	12 18 ↗	12 17 ↗	10 15 ↗	10 14 ↗	9 13 ↗	8 12 ↗	8 12 ↗	8 12 ↗	7 10 ↗	7 10 ↗	7 10 ↗	6 9 ↗	6 8 ↗	6 8 ↗	6 9 ↗	6 9 ↗	7 10 ↗	7 13 ↗	8 14 ↗
Houston Pilots E - 51/52	9 15 ↗	10 16 ↗	10 17 ↗	12 18 ↗	12 17 ↗	12 17 ↗	12 16 ↗	10 15 ↗	10 14 ↗	9 13 ↗	8 12 ↗	8 12 ↗	8 12 ↗	8 10 ↗	8 10 ↗	8 10 ↗	7 9 ↗	7 9 ↗	7 9 ↗	7 9 ↗	7 10 ↗	7 10 ↗	8 13 ↗	8 15 ↗
Houston Pilots D - 37/38	9 15 ↗	10 16 ↗	10 16 ↗	10 17 ↗	10 17 ↗	10 16 ↗	10 16 ↗	10 15 ↗	10 14 ↗	9 13 ↗	8 12 ↗	8 12 ↗	8 12 ↗	8 12 ↗	8 12 ↗	8 12 ↗	7 10 ↗	7 10 ↗	7 10 ↗	7 10 ↗	7 10 ↗	7 12 ↗	8 14 ↗	8 14 ↗
Houston Pilots C - 25/26	9 15 ↗	9 15 ↗	10 16 ↗	10 17 ↗	10 16 ↗	10 16 ↗	10 15 ↗	10 15 ↗	9 13 ↗	8 12 ↗	8 12 ↗	8 12 ↗	8 12 ↗	7 10 ↗	8 10 ↗	8 10 ↗	7 9 ↗	7 9 ↗	7 9 ↗	7 9 ↗	7 10 ↗	7 12 ↗	8 13 ↗	8 14 ↗
Houston Pilots B - 11/12	8 15 ↗	8 14 ↗	9 15 ↗	10 16 ↗	10 15 ↗	10 15 ↗	10 15 ↗	9 14 ↗	8 13 ↗	8 12 ↗	7 12 ↗	7 12 ↗	6 12 ↗	6 10 ↗	6 10 ↗	7 12 ↗	6 10 ↗	6 10 ↗	6 10 ↗	6 10 ↗	6 10 ↗	6 12 ↗	7 13 ↗	8 14 ↗
Houston Pilots A - 1 & 2 Bravo	8 14 ↗	8 13 ↗	8 15 ↗	9 15 ↗	10 15 ↗	10 15 ↗	10 15 ↗	10 15 ↗	9 13 ↗	9 14 ↗	8 13 ↗	8 13 ↗	8 13 ↗	8 12 ↗	8 12 ↗	8 13 ↗	8 12 ↗	8 12 ↗	8 12 ↗	8 10 ↗	8 10 ↗	8 12 ↗	8 13 ↗	8 13 ↗

NOTE: This is automated data that may/may not agree with the official BAM thinking that's found on the daily slides.
This data should be used as a guide only.

Houston Pilots: SUN. 7/6/2025

Forecast Discussion

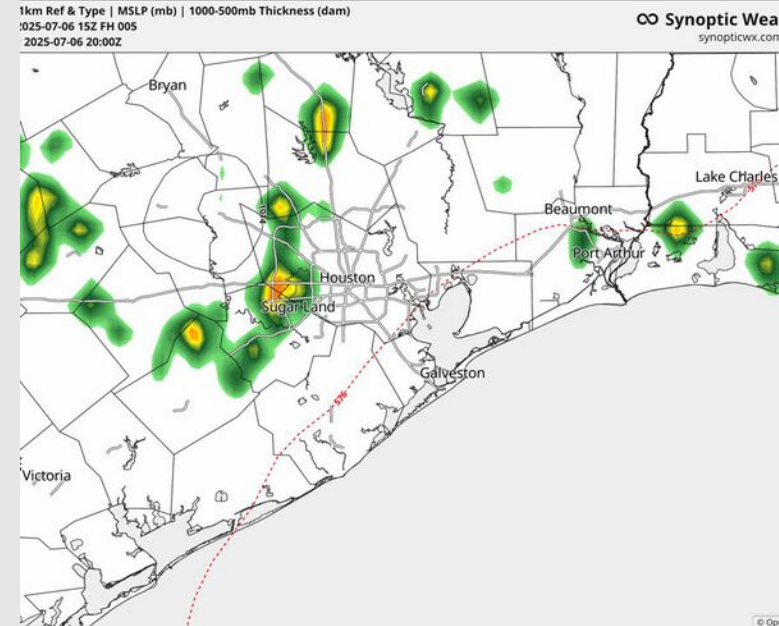
Precip: Scattered showers/a few storms will be possible for Stations N of Morgan's Point through 6PM, with dry conditions favored after then.

Wind: Winds will be out of the S throughout the rest of the day. **N of Morgan's Point:** Winds will be at 6 – 11 kts the rest of the day. **S of Morgan's Point:** Winds will be at 8 – 13 kts.

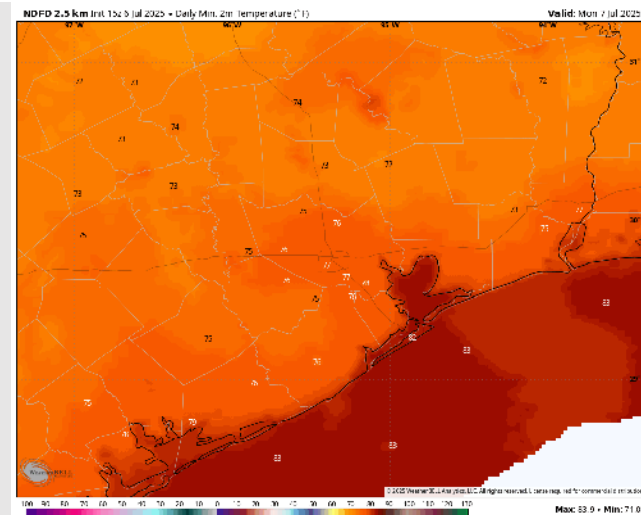
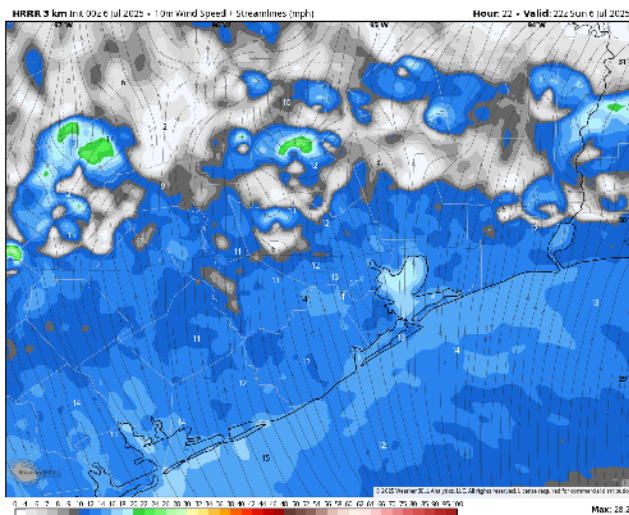
Low Temps: **N of Morgan's Point:** Upper 70s F. **S of Morgan's Point:** Low 80s F.

Visibility: No fog concerns today however heavier downpours may result in reduced visibilities at times.

Precip Image: 3 PM CT



Wind Speed:
5 PM CT



Low Temps
MON AM

Houston Pilots: MON. 7/7/2025

Forecast Discussion

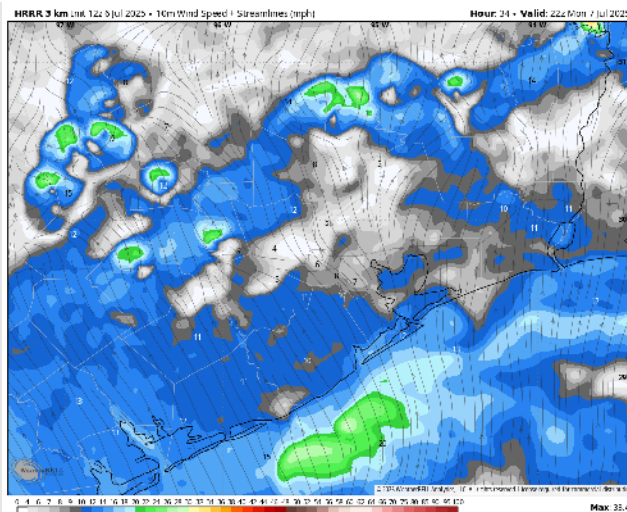
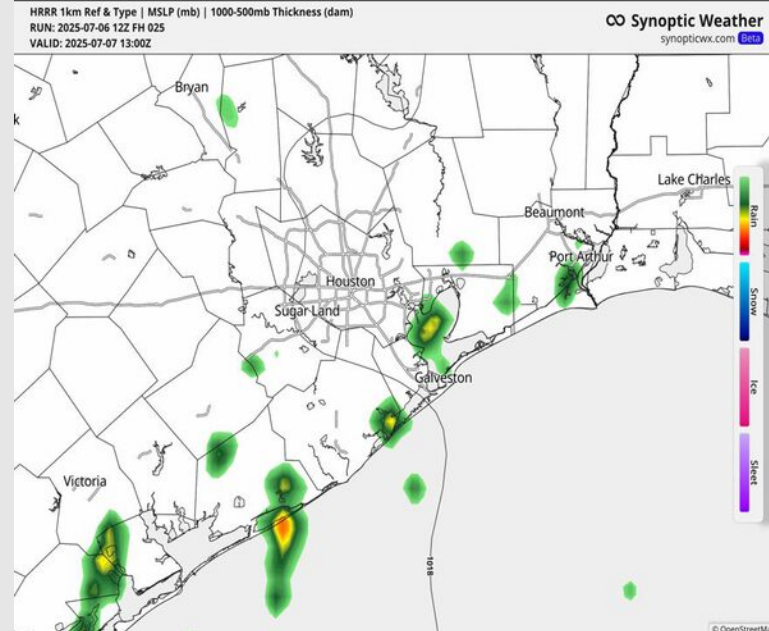
Precip: Scattered showers/storms will be possible at all stations beginning at 6 AM MON and lasting through ~5 PM.

Wind: Winds will be out of the S Monday. **N of Morgan's Point:** Winds will be at 3 – 8 kts. **S of Morgan's Point:** Winds will be at 5 - 10 kts.

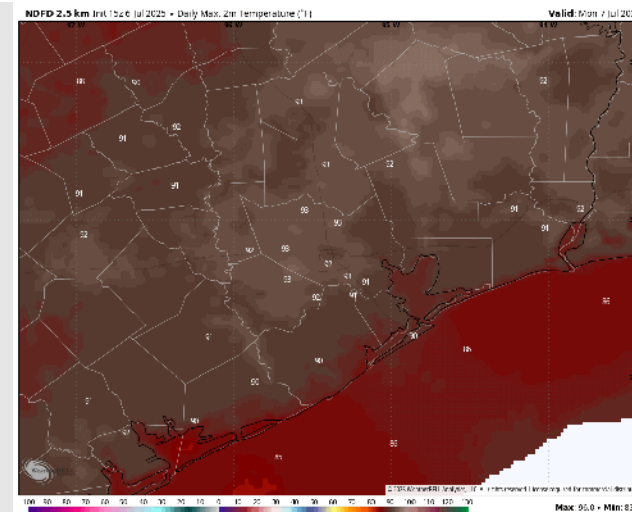
High Temps: **N of Morgan's Point:** Low 90s F. **S of Morgan's Point:** High 80s F.

Visibility: No fog concerns Monday however heavier downpours may result in reduced visibilities at times.

Precip Image: 8 AM CT



Wind Speed:
5 PM CT



High Temps
Monday

Houston Pilots: TUE. 7/8/2025

Forecast Discussion

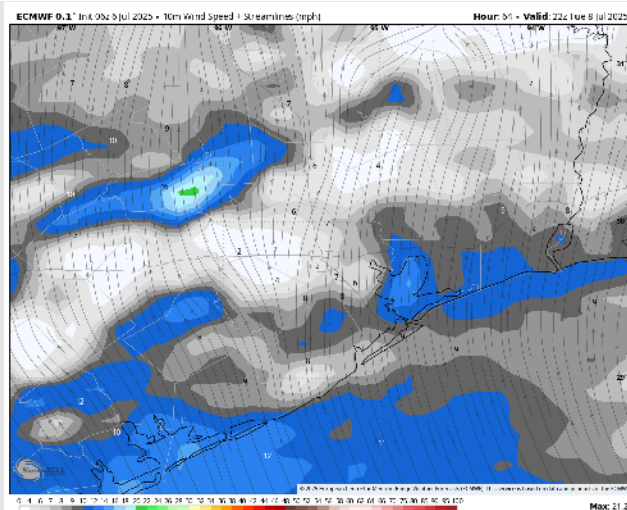
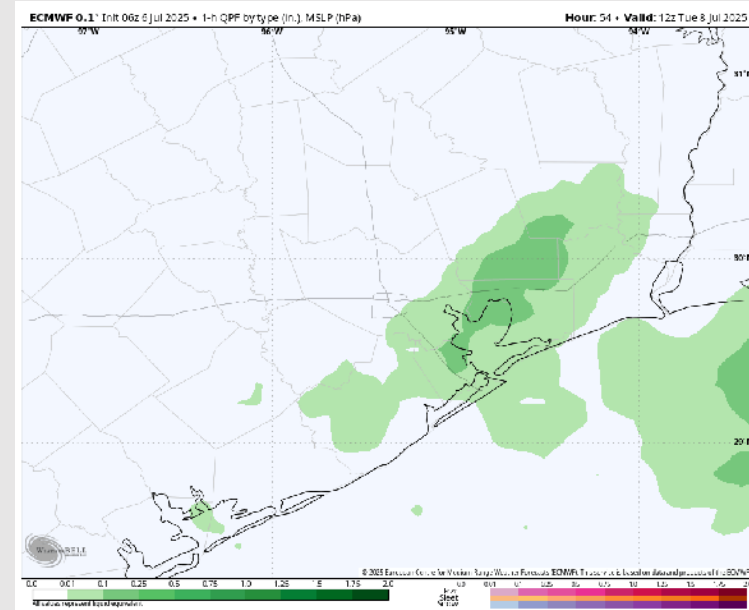
Precip: Scattered (40%) showers in play for Stations S of Morgan's Point after 5 AM, with coverage increasing (50-60%) and a few storms in play for Stations N of Morgan's Point after 2 PM. **Storms N of Morgan's Point will hold risks for heavy downpours, lightning and brief 30 kt wind gusts.**

Wind: Winds will be out of the S/SE. **N of Morgan's Point:** Winds will be at 2 – 7 kts. **S of Morgan's Point:** Winds will be at 5 - 10 kts.

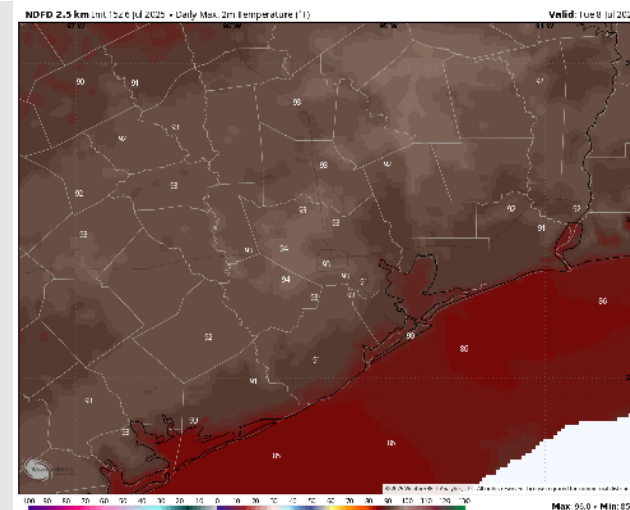
High Temps: **N of Morgan's Point:** Low 90s F. **S of Morgan's Point:** High 80s / Near 90 F.

Visibility: No fog concerns Tuesday, but visibilities can be reduced under heavy downpours.

Precip Image: 7 AM CT



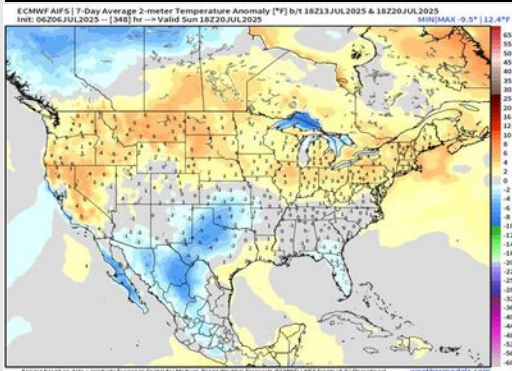
Wind Speed:
5 PM CT



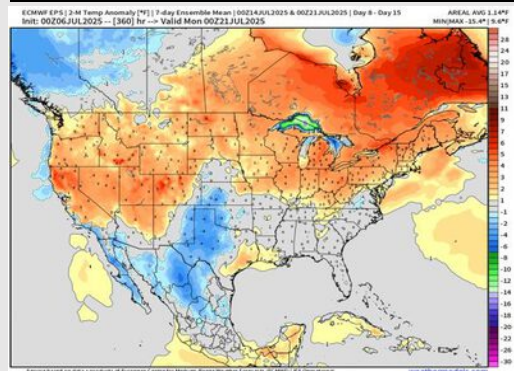
High Temps
Tuesday

Houston Pilots: 7/6/25

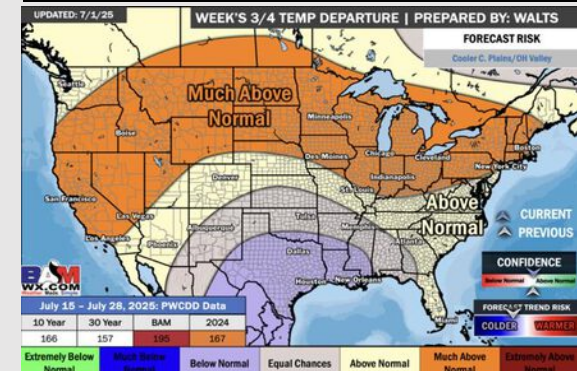
Next 7 Day Temperature Departure



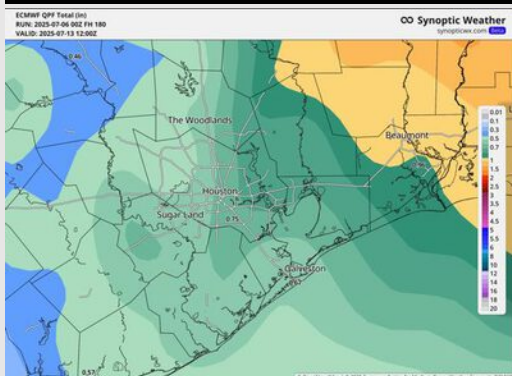
8-14 Day Temperature Departure



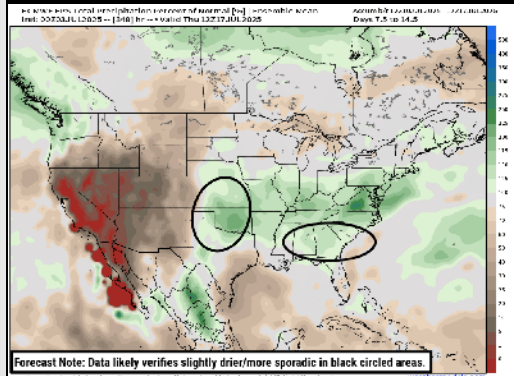
15-30 Day Temperature Departure



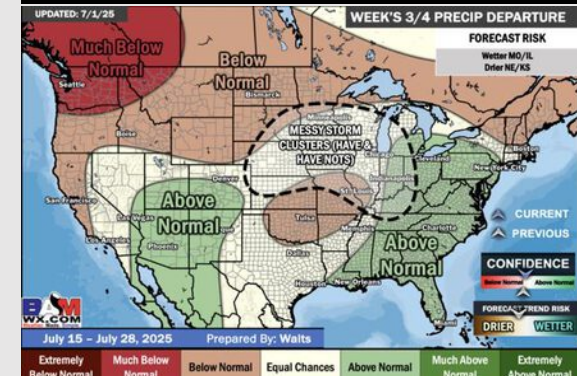
Next 7 Day Total Precipitation



8-14 Day % of Average Precip.



15-30 Day % of Average Precip.



- Temps are expected to be slightly above normal the next 7 days. Scattered rain chances expected throughout the week.
- Warmer than normal temps and lower than average rain chances are favored for days 8 – 14.
- Below normal temperatures are favored into late July along with near normal rainfall chances.