

Houston Pilots Forecast Package

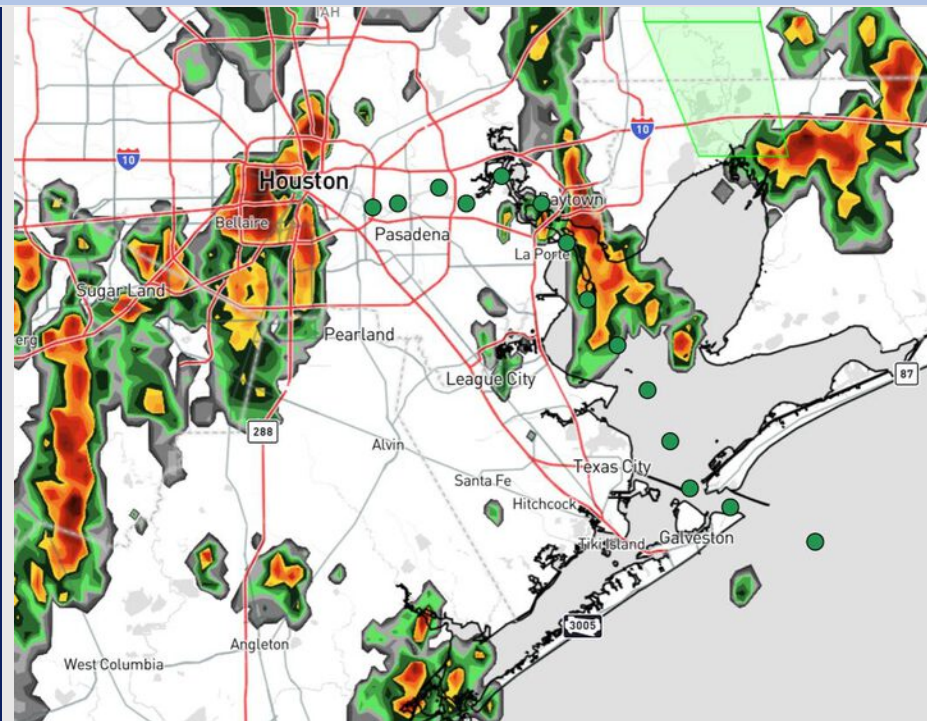


Updated: 1:30 PM CT
Sunday, June 29, 2025

Forecaster: Hope Kleitsch

Weather Headlines

- **Storms today may contain gusty winds of 30 – 40 kts, small hail, and frequent lightning.**
- **Dry conditions expected to return Tuesday.**
- **Choppy waters of 3 – 4' will be possible at the Boarding Station this PM through TUE AM.**



Current Radar: 1:30 PM CT

As always, please do not hesitate to reach out to us with any forecast questions at **(317)-560-8122**. Press **1** for forecast questions.

You can also access real-time forecast updates and 24/7 meteorological chat assistance on your **Clarity** app. Click [here](#) for login assistance.

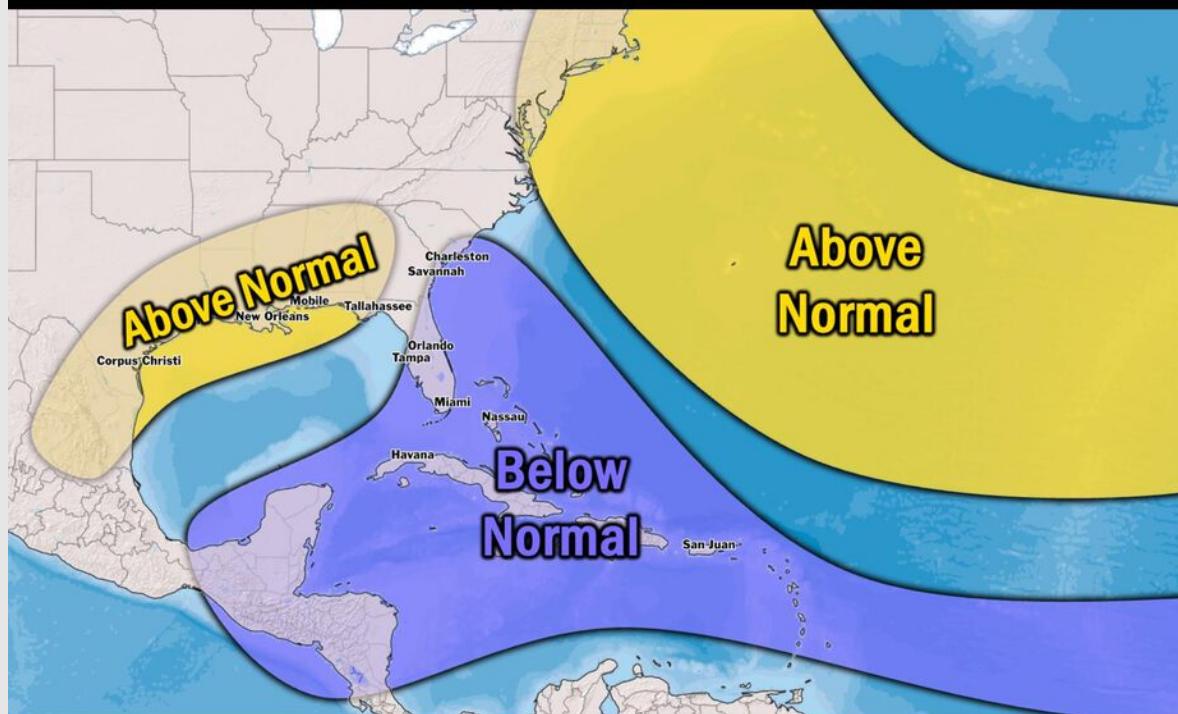


Houston Pilots Tropical Update

Seasonal Hurricane Outlook

2025 HURRICANE SEASON

Updated Issued: Wednesday, June 25, 2025



KEY SEASON NOTES

15 - 19

Named Storms
10 Year Avg: 17.8

6 - 9

Hurricanes
10 Year Avg: 8.2

2 - 4

Major Hurricanes
10 Year Avg: 3.8

Graphic to the left represents our favored seasonal outlook for the 2025 Hurricane Season. Conditions expected to be more favorable for tropical development within the Gulf this season.

No notable tropical development is expected over the next 7 days.

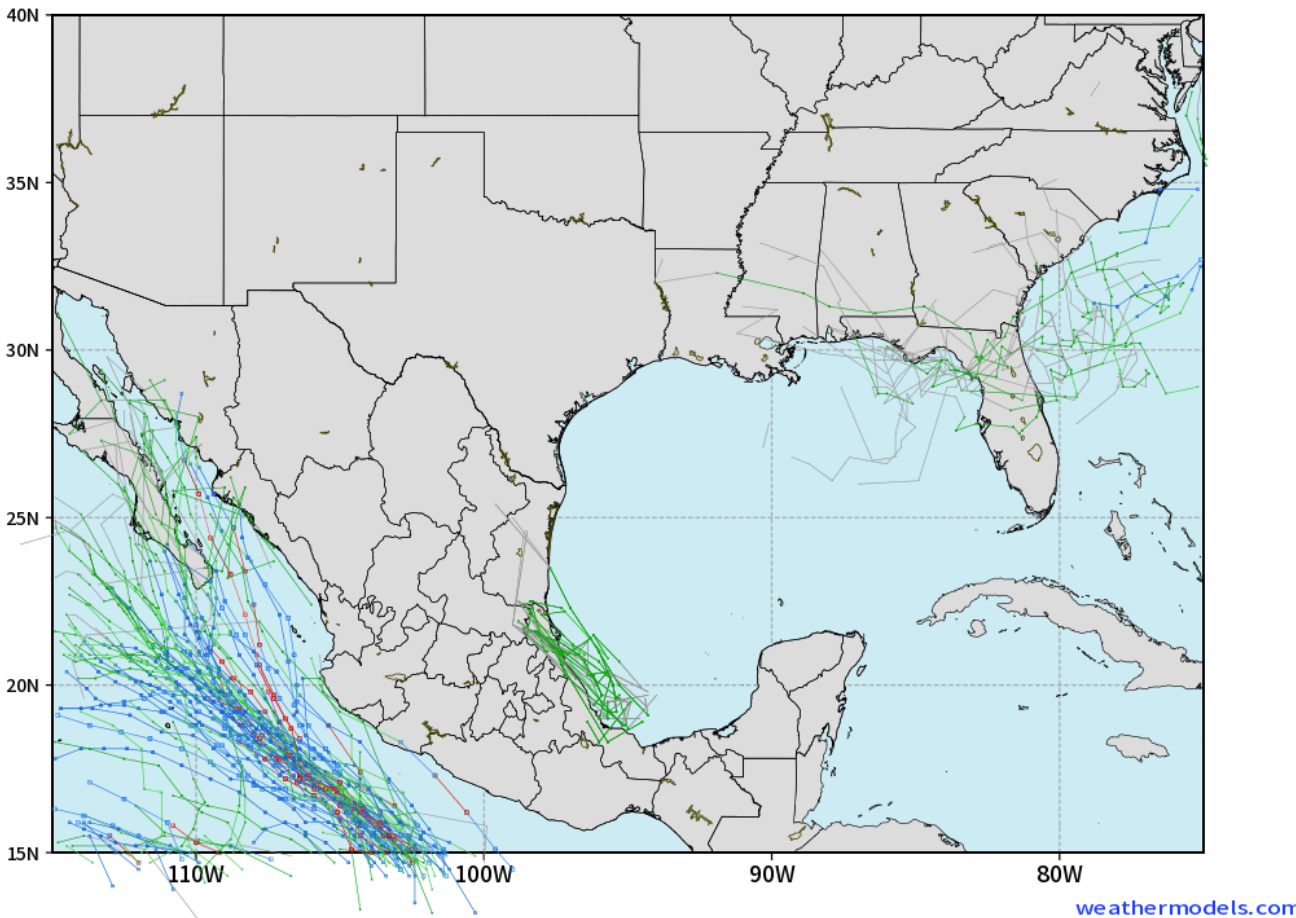
[Click here for the video!](#)

Houston Pilots Tropical Update

10 Day Tropical Outlook

ECMWF GULF EPS Cyclone Locations --> Next [10-days]
INIT: 00Z29JUN2025 --> UNTIL 00Z09JUL2025

o-o ENSEMBLE MEAN
o-o 1000 - 1010 hPa
o-o 980 - 999 hPa
o-o 960 - 979 hPa
o-o 950 - 959 hPa
o-o < 950 hPa



Tropical Storm Barry has developed in the Gulf and is expected to impact northeastern Mexico throughout the early part of this week.

At this time, we are not favoring any impacts for Houston.

Houston Pilots Visibility Chart (miles)



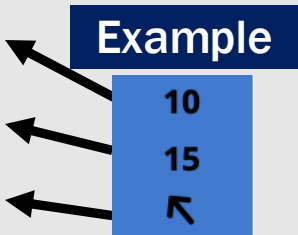
Visibility	Sun 2 pm	Sun 3 pm	Sun 4 pm	Sun 5 pm	Sun 6 pm	Sun 7 pm	Sun 8 pm	Sun 9 pm	Sun 10 pm	Sun 11 pm	Mon 12 am	Mon 1 am	Mon 2 am	Mon 3 am	Mon 4 am	Mon 5 am	Mon 6 am	Mon 7 am	Mon 8 am	Mon 9 am	Mon 10 am	Mon 11 am	Mon 12 pm	Mon 1 pm
Houston Pilots N - 610 Bridge	10	10	10	10	10	10	10	10	10	10	10	10	10	10	10	10	10	10	10	10	10	10	10	10
Houston Pilots M - Kinder 1	10	10	10	10	10	10	10	10	10	10	10	10	10	10	10	10	10	10	10	10	10	10	10	10
Houston Pilots L - Greens Bayou	10	10	10	10	10	10	10	10	10	10	10	10	10	10	10	10	10	10	10	10	10	10	10	10
Houston Pilots K - Shell Crude	10	10	10	10	10	10	10	10	10	10	10	10	10	10	10	10	10	10	10	10	10	10	10	10
Houston Pilots J - Lynchburg Ferries	10	10	10	10	10	10	10	10	10	10	10	10	10	10	10	10	10	10	10	10	10	10	10	10
Houston Pilots I - Exxon 3	10	10	10	10	10	10	10	10	10	10	10	10	10	10	10	10	10	10	10	10	10	10	10	10
Houston Pilots H - Morgans Point	10	10	10	10	10	10	10	10	10	10	10	10	10	10	10	10	10	10	10	10	10	10	10	10
Houston Pilots G - 75/76	10	10	10	10	10	10	10	10	10	10	10	10	10	10	10	10	10	10	10	10	10	10	10	10
Houston Pilots F - 63/64	10	10	10	10	10	10	10	10	10	10	10	10	10	10	10	10	10	10	10	10	10	10	10	10
Houston Pilots E - 51/52	10	10	10	7.9	10	10	10	10	10	10	10	10	10	10	10	10	10	10	10	10	10	10	10	10
Houston Pilots D - 37/38	10	10	10	10	10	10	10	10	10	10	10	10	10	10	10	10	10	10	10	10	10	10	10	10
Houston Pilots C - 25/26	10	10	10	10	10	10	10	10	10	10	10	10	10	10	10	10	10	10	10	10	10	10	10	10
Houston Pilots B - 11/12	10	10	10	10	10	10	10	10	10	10	10	10	10	10	10	10	10	10	10	10	10	10	10	10
Houston Pilots A - 1 & 2 Bravo	10	10	10	10	10	10	10	10	10	10	10	10	10	10	10	10	10	10	10	10	10	10	10	10

NOTE: This is automated data that may/may not agree with the official BAM thinking that's found on the daily slides or special visibility report slides. This data should be used as a guide only

Houston Pilots Wind Chart



Sustained Wind 10 Knots
Gusts 15 Knots
Wind from the SE



Wind	Sun 2 pm	Sun 3 pm	Sun 4 pm	Sun 5 pm	Sun 6 pm	Sun 7 pm	Sun 8 pm	Sun 9 pm	Sun 10 pm	Sun 11 pm	Mon 12 am	Mon 1 am	Mon 2 am	Mon 3 am	Mon 4 am	Mon 5 am	Mon 6 am	Mon 7 am	Mon 8 am	Mon 9 am	Mon 10 am	Mon 11 am	Mon 12 pm	Mon 1 pm
Houston Pilots N - 610 Bridge	8	8	8	8	8	8	8	8	7	6	6	6	5	5	3	3	3	2	2	2	3	3	5	6
	16	16	17	17	17	16	16	15	14	14	13	12	12	9	8	8	7	6	5	5	6	8	10	12
	↑	↑	↑	↑	↑	↑	↑	↑	↑	↑	↑	↑	↑	↑	↑	↑	↑	↑	↑	↑	↑	↑	↑	↑
Houston Pilots M - Kinder 1	8	8	8	8	8	8	8	8	7	6	6	6	5	5	3	3	3	2	2	2	3	3	6	6
	16	17	17	17	17	16	16	15	14	14	13	12	12	9	8	8	6	5	5	5	6	8	10	12
	↑	↑	↑	↑	↑	↑	↑	↑	↑	↑	↑	↑	↑	↑	↑	↑	↑	↑	↑	↑	↑	↑	↑	↑
Houston Pilots L - Greens Bayou	8	8	9	8	8	8	8	7	7	6	6	6	5	3	3	3	3	2	2	2	3	3	6	6
	16	17	18	17	17	16	16	15	14	13	12	12	10	9	8	8	6	5	5	5	6	8	10	12
	↑	↑	↑	↑	↑	↑	↑	↑	↑	↑	↑	↑	↑	↑	↑	↑	↑	↑	↑	↑	↑	↑	↑	↑
Houston Pilots K - Shell Crude	8	9	9	9	9	8	8	7	7	6	6	6	5	5	3	3	3	2	2	2	3	3	6	6
	17	17	18	18	17	16	16	15	14	13	13	12	10	9	8	8	6	5	5	5	6	8	10	12
	↑	↑	↑	↑	↑	↑	↑	↑	↑	↑	↑	↑	↑	↑	↑	↑	↑	↑	↑	↑	↑	↑	↑	↑
Houston Pilots J - Lynchburg Ferries	8	9	9	9	8	8	8	7	6	6	6	5	5	3	3	3	2	2	1	2	2	3	6	6
	17	17	18	18	17	16	16	15	14	13	12	12	10	9	8	7	6	5	5	5	6	8	10	12
	↑	↑	↑	↑	↑	↑	↑	↑	↑	↑	↑	↑	↑	↑	↑	↑	↑	↑	↑	↑	↑	↑	↑	↑
Houston Pilots I - Exxon 3	10	12	12	12	12	12	12	12	10	10	10	10	9	8	8	7	6	6	5	5	5	6	6	7
	18	18	20	20	20	18	17	16	16	16	15	15	15	13	12	10	9	8	7	7	8	9	12	13
	↑	↑	↑	↑	↑	↑	↑	↑	↑	↑	↑	↑	↑	↑	↑	↑	↑	↑	↑	↑	↑	↑	↑	↑
Houston Pilots H - Morgans Point	10	12	12	13	13	13	12	12	10	10	10	10	10	8	8	7	6	6	5	5	6	6	6	7
	18	18	20	20	20	18	17	16	16	16	15	15	15	14	13	12	9	8	7	7	8	9	12	14
	↑	↑	↑	↑	↑	↑	↑	↑	↑	↑	↑	↑	↑	↑	↑	↑	↑	↑	↑	↑	↑	↑	↑	↑
Houston Pilots G - 75/76	10	12	12	13	13	13	13	13	13	12	12	12	12	10	10	9	8	7	6	6	6	6	7	8
	20	20	20	21	21	20	18	18	17	17	16	16	16	15	15	14	12	10	9	9	9	10	13	14
	↑	↑	↑	↑	↑	↑	↑	↑	↑	↑	↑	↑	↑	↑	↑	↑	↑	↑	↑	↑	↑	↑	↑	↑
Houston Pilots F - 63/64	10	12	12	13	13	13	13	13	12	12	12	12	12	10	10	9	8	8	7	6	6	7	7	8
	20	20	20	21	20	18	18	17	17	17	16	16	16	15	15	14	13	12	10	10	10	13	15	15
	↑	↑	↑	↑	↑	↑	↑	↑	↑	↑	↑	↑	↑	↑	↑	↑	↑	↑	↑	↑	↑	↑	↑	↑
Houston Pilots E - 51/52	12	12	12	12	13	13	13	13	13	13	13	13	13	12	10	10	9	8	8	7	7	7	8	8
	20	20	20	20	20	18	17	17	17	17	17	17	17	16	15	15	14	13	12	12	12	12	13	15
	↑	↑	↑	↑	↑	↑	↑	↑	↑	↑	↑	↑	↑	↑	↑	↑	↑	↑	↑	↑	↑	↑	↑	↑
Houston Pilots D - 37/38	12	12	12	12	12	12	12	12	12	13	13	13	13	12	12	10	9	8	8	8	7	8	8	8
	20	18	20	20	18	18	17	17	17	17	17	17	17	16	16	15	14	13	12	12	12	12	13	14
	↑	↑	↑	↑	↑	↑	↑	↑	↑	↑	↑	↑	↑	↑	↑	↑	↑	↑	↑	↑	↑	↑	↑	↑
Houston Pilots C - 25/26	12	12	12	12	12	12	12	12	12	12	12	12	13	12	10	10	9	8	8	8	8	8	8	8
	18	18	20	18	18	17	17	16	17	17	17	17	17	16	15	15	14	13	12	12	12	12	13	14
	↑	↑	↑	↑	↑	↑	↑	↑	↑	↑	↑	↑	↑	↑	↑	↑	↑	↑	↑	↑	↑	↑	↑	↑
Houston Pilots B - 11/12	10	10	10	10	10	10	10	10	10	10	10	10	10	10	10	9	8	8	7	7	7	7	8	8
	18	17	17	17	17	16	16	16	16	16	16	16	16	16	15	15	14	13	13	12	12	12	13	13
	↑	↑	↑	↑	↑	↑	↑	↑	↑	↑	↑	↑	↑	↑	↑	↑	↑	↑	↑	↑	↑	↑	↑	↑
Houston Pilots A - 1 & 2 Bravo	10	10	10	10	10	10	10	12	12	13	13	13	13	13	13	12	10	9	8	8	8	8	8	8
	17	17	17	17	17	16	16	16	17	17	18	18	18	18	17	16	15	15	14	13	12	12	13	13
	↑	↑	↑	↑	↑	↑	↑	↑	↑	↑	↑	↑	↑	↑	↑	↑	↑	↑	↑	↑	↑	↑	↑	↑

NOTE: This is automated data that may/may not agree with the official BAM thinking that's found on the daily slides.
This data should be used as a guide only.

Houston Pilots: SUN. 6/29/2025

Forecast Discussion

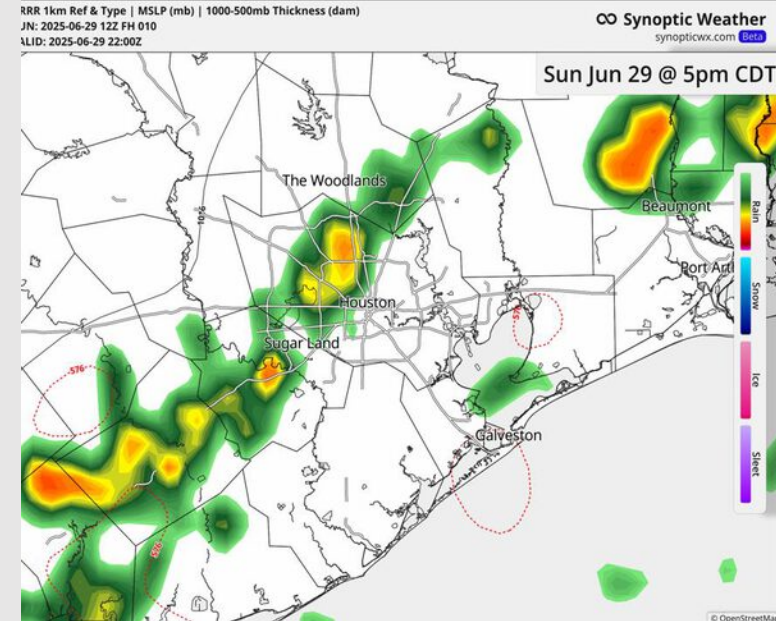
Precip: Scattered showers/storms are expected to linger through 7PM before continuing north of all Stations. **Storms may contain gusty winds of 30 – 40 kts, small hail, and frequent lightning.**

Wind: Winds will be out of the S/SE. **N of Morgan's Point:** Winds will be at 6 – 11 kts, decreasing to 3 – 8 kts after 8PM. **S of Morgan's Point:** Winds will be at 11 – 16 kts. **Non-thunderstorm wind gusts up to 20 kts will be possible for all Stations through 8PM.**

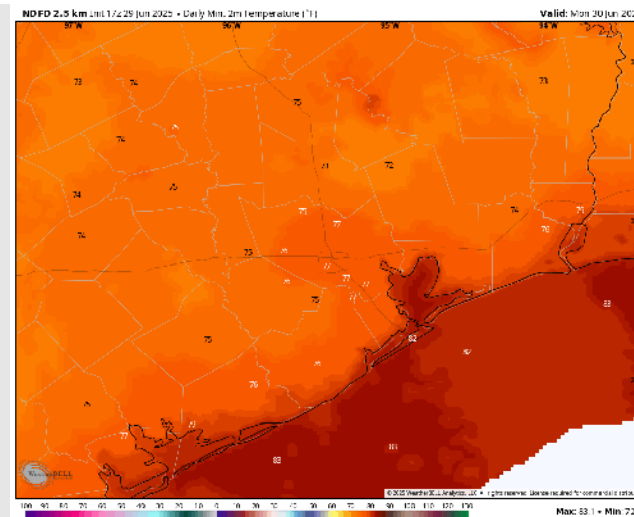
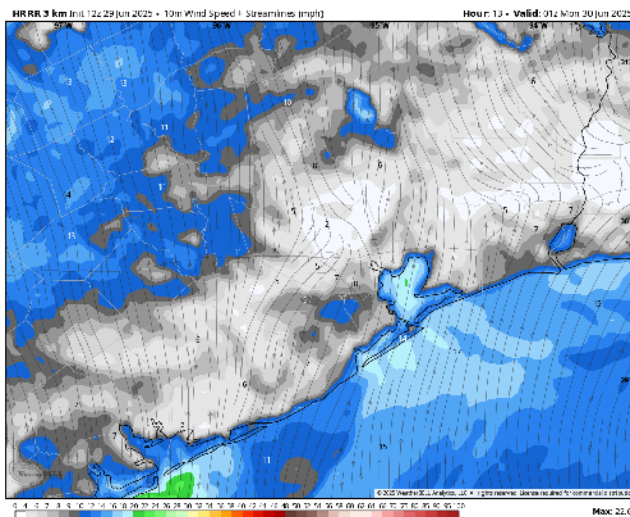
Low Temps: **N of Morgan's Point:** Upper 70s F. **S of Morgan's Point:** Low 80s F.

Visibility: No fog concerns today, however, a few downpours may limit visibility.

Precip Image: 5 PM CT



Wind Speed:
8 PM CT



Low Temps
MON AM

Houston Pilots: MON. 6/30/2025

Forecast Discussion

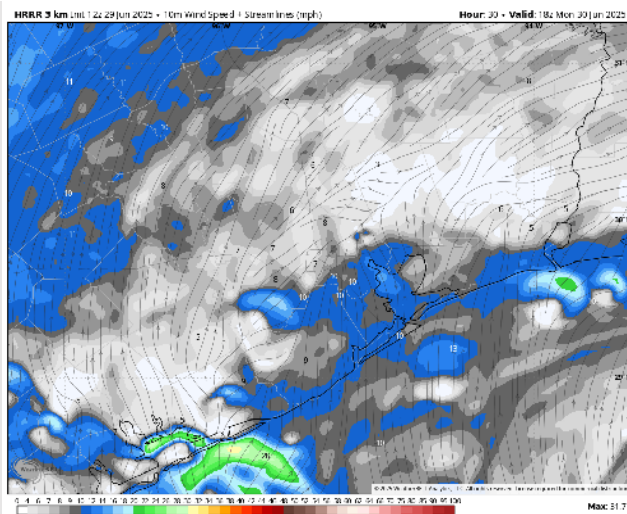
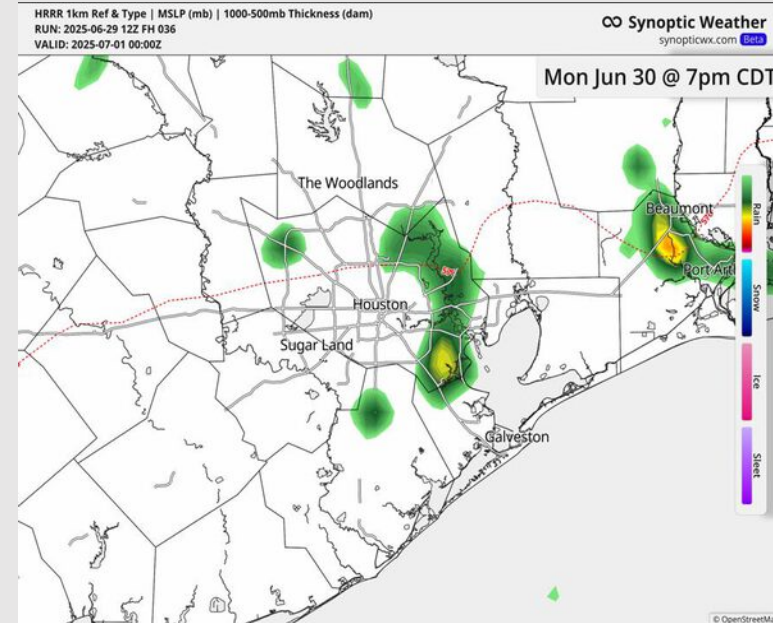
Precip: A few showers will be possible for Stations S. of Morgan's Point from 5AM to 10AM. Hit/miss (30-40%) showers/storms in play for all Stations from 1PM to 8PM. **Lightning will be a risk within storms from 1PM to 8PM.**

Wind: Winds will be out of the S/SW Monday, becoming variable at times. **N of Morgan's Point:** Winds will be at 3– 8 kts. **S of Morgan's Point:** Winds will be at 6 – 11 kts throughout the day.

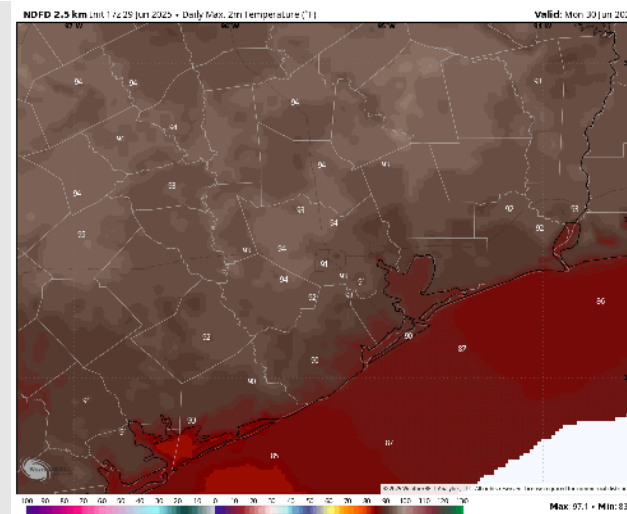
High Temps: **N of Morgan's Point:** Low 90s F. **S of Morgan's Point:** High 80s F/Near 90 F.

Visibility: No fog concerns Monday, however, visibility may be reduced under a few downpours.

Precip Image: 7 PM CT



Wind Speed:
1 PM CT



High Temps
Monday

Houston Pilots: TUE. 7/1/2025

Forecast Discussion

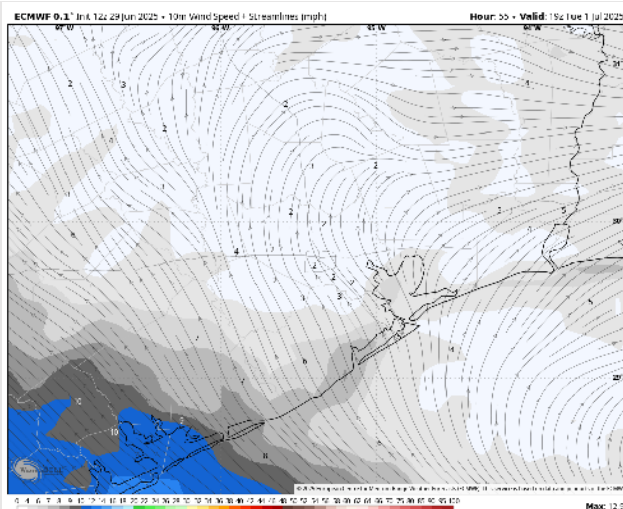
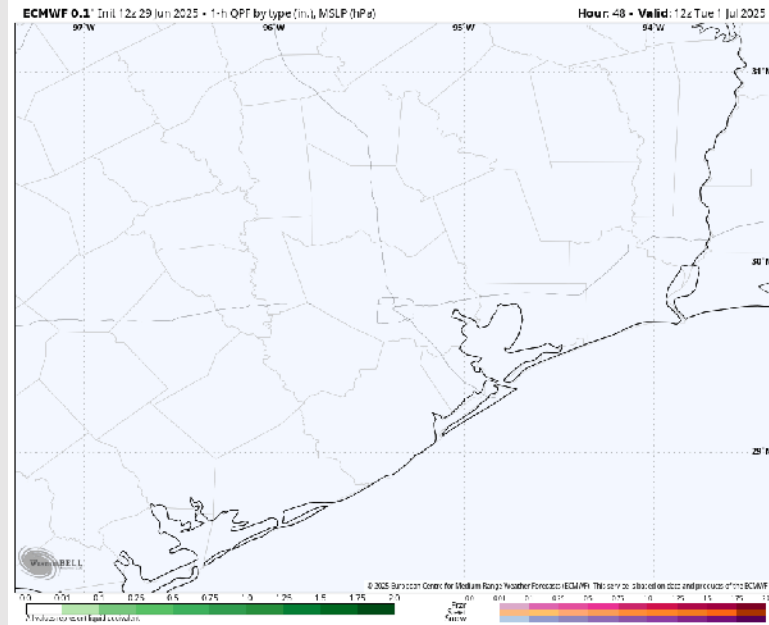
Precip: Favoring dry conditions for Tuesday.

Wind: Winds will be out of the S for Tuesday ,becoming variable at times. **N of Morgan's Point:** Winds will be at 2 – 7 kts. **S of Morgan's Point:** Winds will be 4 – 9 kts.

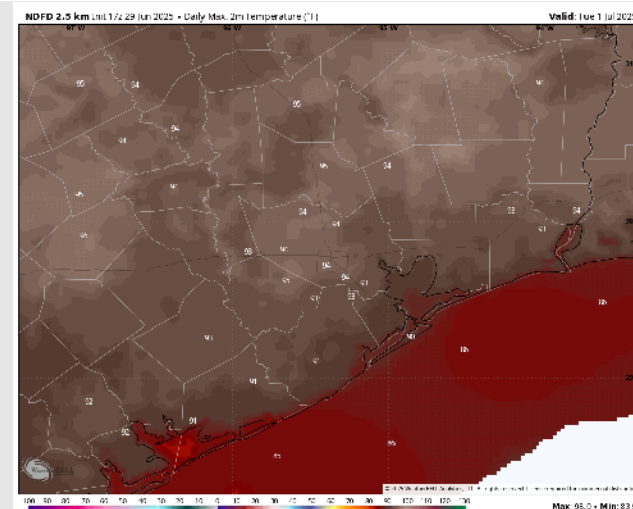
High Temps: **N of Morgan's Point:** Low 90s F. **S of Morgan's Point:** High 80s F/near 90 F.

Visibility: No visibility concerns Tuesday.

Precip Image: 7 AM CT



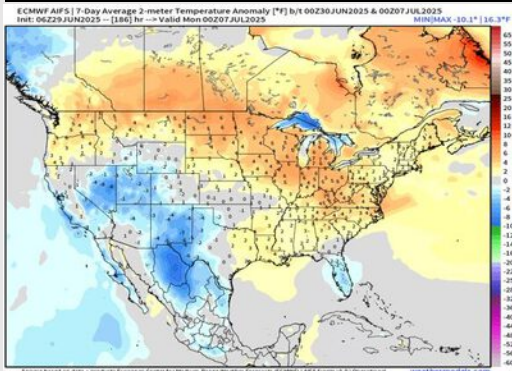
Wind Speed:
2 PM CT



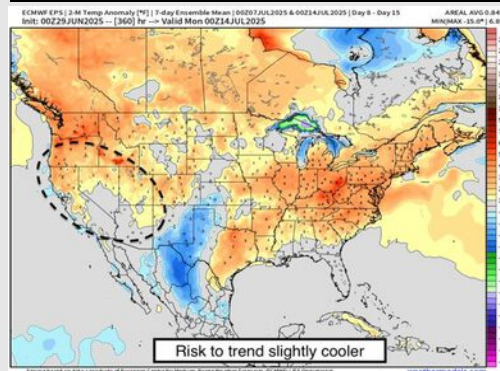
High Temps
Tuesday

Houston Pilots: 6/29/25

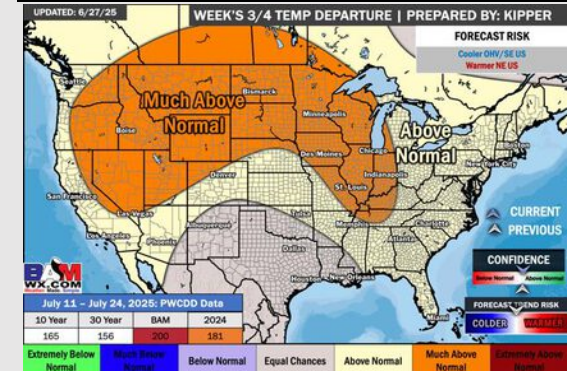
Next 7 Day Temperature Departure



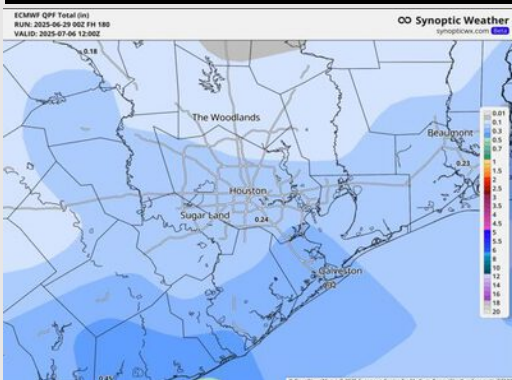
8-14 Day Temperature Departure



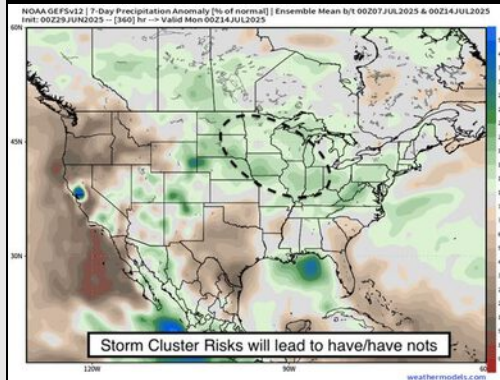
15-30 Day Temperature Departure



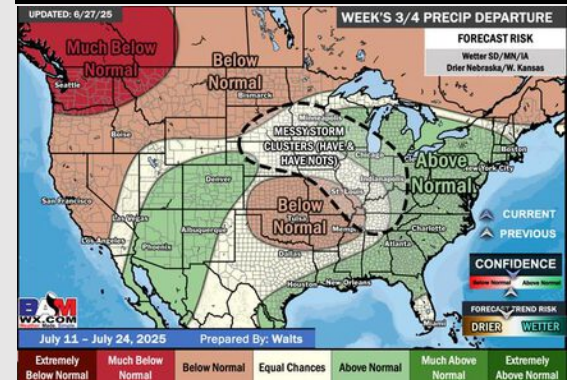
Next 7 Day Total Precipitation



8-14 Day % of Average Precip.



15-30 Day % of Average Precip.



- Temps are expected to be slightly above normal the next 7 days. Scattered rain chances expected to start the week, with dry conditions following.
- Above normal temps and drier than normal conditions are favored for days 8 – 14.
- Near normal temperatures are favored into early July along with above normal rainfall chances.