

Houston Pilots Forecast Package



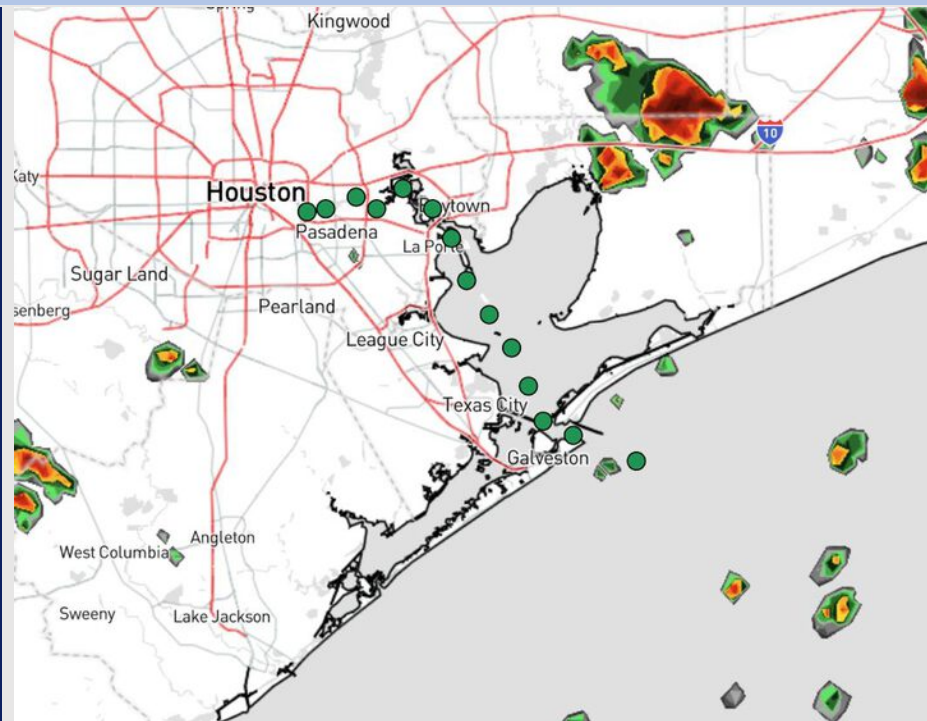
Updated: 12:50 PM CT

Thursday, June 26, 2025

Forecaster: Lydia Purlee

Weather Headlines

- Isolated storms will become strong in nature today with the main hazards being frequent lightning, hail, heavy downpours, and wind gusts up to 35 kts.
- Winds will be relatively calm over the next 72 hours.
- See favored 2025 Hurricane Season Outlook below! [Click here to view the video!](#)



Current Radar: 12:50 PM CT

As always, please do not hesitate to reach out to us with any forecast questions at **(317)-560-8122**. **Press 1 for forecast questions.**

You can also access real-time forecast updates and 24/7 meteorological chat assistance on your **Clarity** app. Click [here](#) for login assistance.

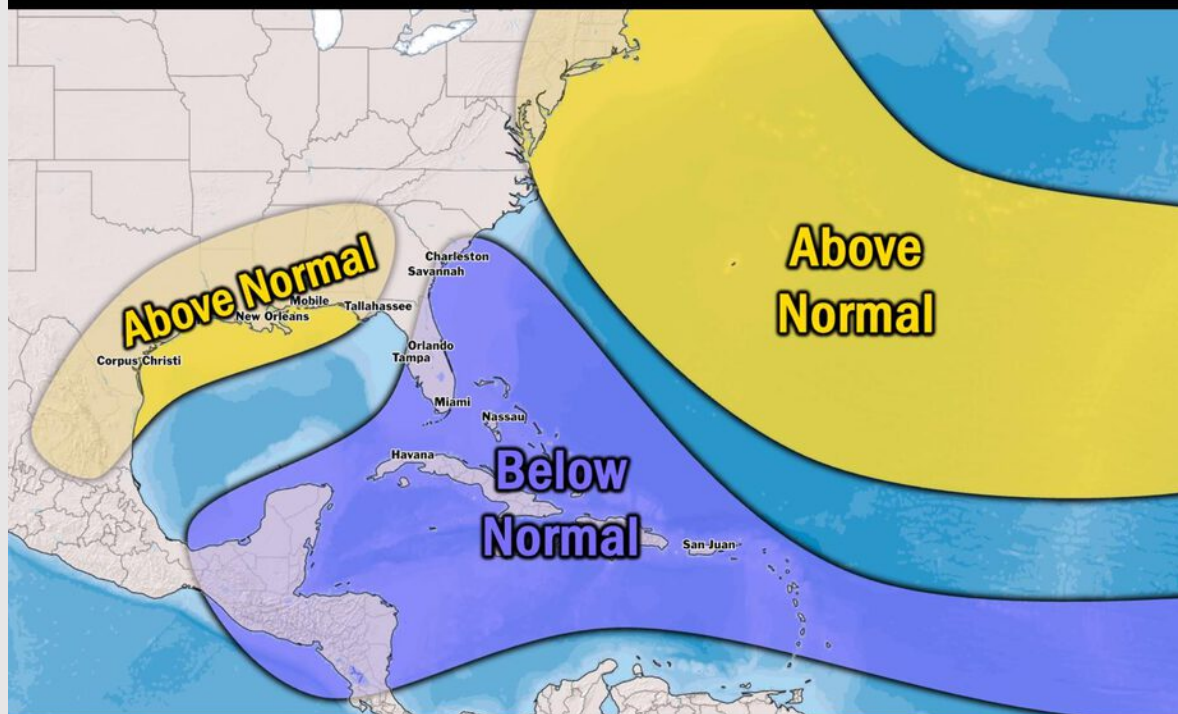


Houston Pilots Tropical Update

Seasonal Hurricane Outlook

2025 HURRICANE SEASON

Updated Issued: Wednesday, June 25, 2025



KEY SEASON NOTES

15 - 19

Named Storms
10 Year Avg: 17.8

6 - 9

Hurricanes
10 Year Avg: 8.2

2 - 4

Major Hurricanes
10 Year Avg: 3.8

Graphic to the left represents our favored seasonal outlook for the 2025 Hurricane Season. Conditions expected to be more favorable for tropical development within the Gulf this season.

No notable tropical development is expected over the next 7 days.

[Click here for the video!](#)

Houston Pilots Visibility Chart (miles)



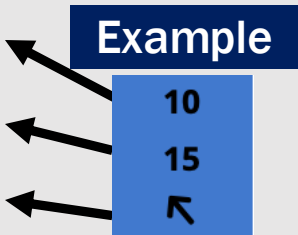
Visibility	Thu 2 pm	Thu 3 pm	Thu 4 pm	Thu 5 pm	Thu 6 pm	Thu 7 pm	Thu 8 pm	Thu 9 pm	Thu 10 pm	Thu 11 pm	Fri 12 am	Fri 1 am	Fri 2 am	Fri 3 am	Fri 4 am	Fri 5 am	Fri 6 am	Fri 7 am	Fri 8 am	Fri 9 am	Fri 10 am	Fri 11 am	Fri 12 pm	Fri 1 pm
Houston Pilots N - 610 Bridge	10	10	10	10	10	10	10	10	10	10	10	10	10	10	10	10	9	7.9	6.9	10	10	10	10	10
Houston Pilots M - Kinder 1	10	10	10	10	10	10	10	10	10	10	10	10	10	10	10	10	9	7.9	6.9	10	10	10	10	10
Houston Pilots L - Greens Bayou	10	10	10	10	10	10	10	10	10	10	10	10	10	10	10	10	9	7.9	6.9	10	10	10	10	10
Houston Pilots K - Shell Crude	10	10	10	10	10	10	10	10	10	10	10	10	10	10	10	10	9	7.9	6.9	10	10	10	10	10
Houston Pilots J - Lynchburg Ferries	10	10	10	10	10	10	10	10	10	10	10	10	10	10	10	10	9	7.9	6.9	10	10	10	10	10
Houston Pilots I - Exxon 3	10	10	10	10	10	10	10	10	10	10	10	10	10	10	10	10	9	7.9	6.9	10	10	10	10	10
Houston Pilots H - Morgans Point	10	10	10	10	10	10	10	10	10	10	10	10	10	10	10	10	10	10	6.9	10	10	10	10	10
Houston Pilots G - 75/76	10	10	10	10	10	10	10	10	10	10	10	10	10	10	10	10	10	10	6.9	10	10	10	10	10
Houston Pilots F - 63/64	10	10	10	10	10	10	10	10	10	10	10	10	10	10	10	10	10	10	7.9	10	10	10	10	10
Houston Pilots E - 51/52	10	10	10	10	10	10	10	10	10	10	10	10	10	10	10	10	10	10	7.9	10	10	10	10	10
Houston Pilots D - 37/38	10	10	10	10	10	10	10	10	10	10	10	10	10	10	10	10	10	10	7.9	10	10	10	10	10
Houston Pilots C - 25/26	10	10	10	10	10	10	10	10	10	10	10	10	10	10	10	10	10	10	9	10	10	10	10	10
Houston Pilots B - 11/12	10	10	10	10	10	10	10	10	10	10	10	10	10	10	10	10	10	10	9	10	10	10	10	10
Houston Pilots A - 1 & 2 Bravo	10	10	10	10	10	10	10	10	10	10	10	10	10	10	10	9	10	10	7.9	10	10	10	10	10

NOTE: This is automated data that may/may not agree with the official BAM thinking that's found on the daily slides or special visibility report slides. This data should be used as a guide only

Houston Pilots Wind Chart



Sustained Wind 10 Knots
Gusts 15 Knots
Wind from the SE



Wind	Thu 2 pm	Thu 3 pm	Thu 4 pm	Thu 5 pm	Thu 6 pm	Thu 7 pm	Thu 8 pm	Thu 9 pm	Thu 10 pm	Thu 11 pm	Fri 12 am	Fri 1 am	Fri 2 am	Fri 3 am	Fri 4 am	Fri 5 am	Fri 6 am	Fri 7 am	Fri 8 am	Fri 9 am	Fri 10 am	Fri 11 am	Fri 12 pm	Fri 1 pm
Houston Pilots N - 610 Bridge	6 13 ↖	6 14 ↖	7 14 ↖	8 15 ↖	7 15 ↖	8 14 ↖	7 14 ↖	6 13 ↖	5 9 ↖	3 9 ↖	3 7 ↖	3 6 ↖	3 6 ↖	2 6 ↖	2 5 ↖	2 5 ↖	1 5 ↖	1 5 ↖	1 5 ↖	1 5 ↖	2 5 ↖	3 7 ↖	5 8 ↖	5 9 ↖
Houston Pilots M - Kinder 1	6 13 ↖	7 14 ↖	7 14 ↖	8 15 ↖	8 15 ↖	8 14 ↖	7 14 ↖	6 13 ↖	5 9 ↖	3 8 ↖	3 7 ↖	3 6 ↖	3 6 ↖	2 6 ↖	2 5 ↖	2 5 ↖	1 5 ↖	1 5 ↖	1 5 ↖	1 5 ↖	2 5 ↖	3 7 ↖	5 8 ↖	6 10 ↖
Houston Pilots L - Greens Bayou	6 13 ↖	7 14 ↖	8 14 ↖	8 15 ↖	8 15 ↖	8 14 ↖	7 14 ↖	6 12 ↖	5 9 ↖	3 8 ↖	3 7 ↖	3 6 ↖	2 6 ↖	2 5 ↖	2 5 ↖	2 5 ↖	1 3 ↖	1 3 ↖	1 5 ↖	1 5 ↖	2 5 ↖	3 7 ↖	5 8 ↖	6 10 ↖
Houston Pilots K - Shell Crude	6 14 ↖	7 14 ↖	8 14 ↖	8 15 ↖	8 15 ↖	8 14 ↖	7 14 ↖	6 12 ↖	5 9 ↖	3 8 ↖	3 7 ↖	3 6 ↖	2 6 ↖	2 5 ↖	2 5 ↖	1 5 ↖	1 3 ↖	1 3 ↖	1 3 ↖	1 5 ↖	2 5 ↖	3 7 ↖	5 8 ↖	6 10 ↖
Houston Pilots J - Lynchburg Ferries	6 13 ↖	7 14 ↖	7 14 ↖	8 15 ↖	7 15 ↖	7 14 ↖	7 14 ↖	6 12 ↖	5 9 ↖	3 8 ↖	3 6 ↖	2 6 ↖	2 5 ↖	1 5 ↖	1 5 ↖	1 5 ↖	1 3 ↖	1 3 ↖	1 3 ↖	1 5 ↖	3 5 ↖	7 7 ↖	9 9 ↖	10 10 ↖
Houston Pilots I - Exxon 3	8 14 ↖	8 15 ↖	9 16 ↖	10 16 ↖	10 16 ↖	10 16 ↖	10 15 ↖	9 13 ↖	8 12 ↖	7 10 ↖	6 9 ↖	6 9 ↖	6 8 ↖	5 8 ↖	5 7 ↖	5 7 ↖	3 7 ↖	3 5 ↖	3 5 ↖	3 6 ↖	3 6 ↖	5 7 ↖	6 9 ↖	7 12 ↖
Houston Pilots H - Morgans Point	8 15 ↖	8 15 ↖	9 16 ↖	10 16 ↖	10 16 ↖	10 16 ↖	10 15 ↖	9 13 ↖	8 12 ↖	7 10 ↖	6 9 ↖	6 9 ↖	6 9 ↖	6 8 ↖	5 7 ↖	5 7 ↖	3 7 ↖	3 6 ↖	3 6 ↖	3 6 ↖	3 6 ↖	5 7 ↖	6 10 ↖	7 12 ↖
Houston Pilots G - 75/76	8 15 ↖	8 16 ↖	9 16 ↖	10 17 ↖	10 16 ↖	10 16 ↖	10 16 ↖	10 14 ↖	9 13 ↖	8 12 ↖	8 10 ↖	7 10 ↖	7 10 ↖	6 9 ↖	6 8 ↖	6 8 ↖	6 7 ↖	5 7 ↖	5 7 ↖	5 7 ↖	5 8 ↖	6 8 ↖	6 10 ↖	7 13 ↖
Houston Pilots F - 63/64	8 15 ↖	8 15 ↖	9 16 ↖	10 17 ↖	10 16 ↖	10 16 ↖	10 16 ↖	10 14 ↖	9 13 ↖	8 12 ↖	8 10 ↖	8 10 ↖	8 10 ↖	7 9 ↖	6 9 ↖	6 8 ↖	6 8 ↖	6 7 ↖	5 7 ↖	5 7 ↖	5 8 ↖	6 8 ↖	6 12 ↖	7 13 ↖
Houston Pilots E - 51/52	8 15 ↖	8 15 ↖	9 15 ↖	10 16 ↖	10 15 ↖	10 15 ↖	10 15 ↖	10 14 ↖	9 13 ↖	8 12 ↖	8 10 ↖	8 10 ↖	8 10 ↖	7 9 ↖	7 9 ↖	7 8 ↖	6 8 ↖	6 8 ↖	6 8 ↖	6 8 ↖	6 9 ↖	6 8 ↖	7 12 ↖	8 13 ↖
Houston Pilots D - 37/38	8 15 ↖	8 15 ↖	9 15 ↖	9 16 ↖	10 15 ↖	10 15 ↖	10 15 ↖	9 13 ↖	8 13 ↖	8 12 ↖	8 12 ↖	8 10 ↖	8 12 ↖	8 10 ↖	7 10 ↖	7 10 ↖	6 9 ↖	6 9 ↖	6 8 ↖	6 8 ↖	6 9 ↖	6 9 ↖	7 12 ↖	8 13 ↖
Houston Pilots C - 25/26	8 15 ↖	8 15 ↖	8 15 ↖	9 15 ↖	9 15 ↖	9 14 ↖	9 14 ↖	9 13 ↖	8 12 ↖	8 12 ↖	8 12 ↖	8 10 ↖	8 10 ↖	7 10 ↖	7 10 ↖	7 10 ↖	6 9 ↖	6 9 ↖	6 9 ↖	6 8 ↖	6 9 ↖	6 8 ↖	7 12 ↖	8 13 ↖
Houston Pilots B - 11/12	8 14 ↖	8 13 ↖	8 13 ↖	8 14 ↖	8 15 ↖	8 13 ↖	8 13 ↖	8 13 ↖	8 12 ↖	7 12 ↖	7 10 ↖	7 10 ↖	7 10 ↖	6 10 ↖	6 10 ↖	6 10 ↖	6 9 ↖	6 9 ↖	6 9 ↖	6 9 ↖	6 9 ↖	6 9 ↖	7 12 ↖	8 12 ↖
Houston Pilots A - 1 & 2 Bravo	8 13 ↖	8 13 ↖	8 13 ↖	8 14 ↖	8 14 ↖	8 13 ↖	8 14 ↖	9 13 ↖	8 13 ↖	8 13 ↖	8 12 ↖	8 12 ↖	8 12 ↖	8 12 ↖	8 12 ↖	8 12 ↖	7 10 ↖	7 10 ↖	7 10 ↖	6 9 ↖	6 9 ↖	6 9 ↖	6 10 ↖	7 10 ↖

NOTE: This is automated data that may/may not agree with the official BAM thinking that's found on the daily slides.
This data should be used as a guide only.

Houston Pilots: THU. 6/26/2025

Forecast Discussion

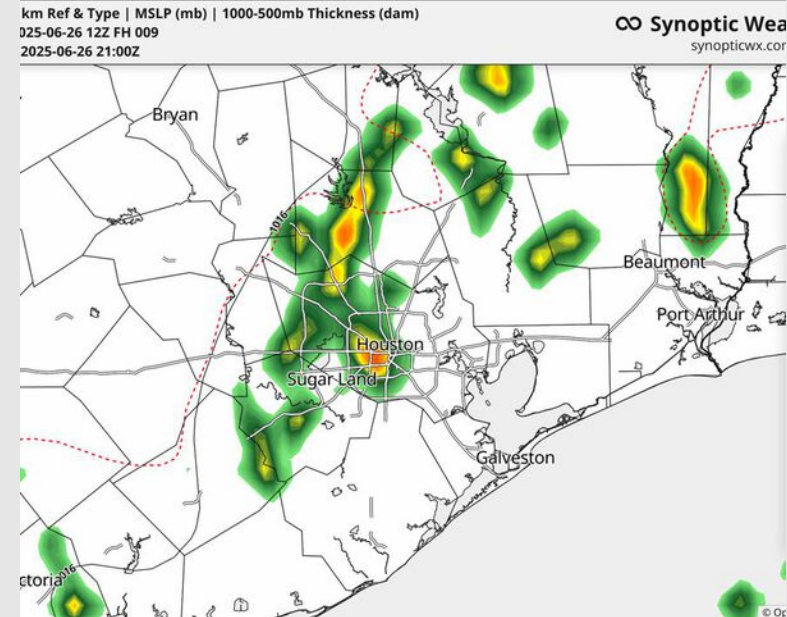
Precip: Scattered showers and storms will be possible between now and 6PM today. Coverage is trending north of ALL stations. **Some isolated storms will become strong in nature, with main hazards being frequent lightning, hail, heavy downpours, and wind gusts up to 35 kts.**

Wind: Winds will be out of the SE throughout the day. **N of Morgan's Point:** Winds will be 7 – 11 kts. **S of Morgan's Point:** Winds will be at 7 – 13 kts for the rest of the day.

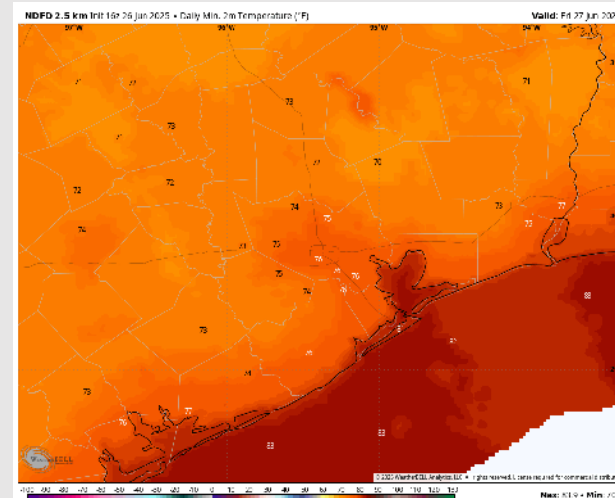
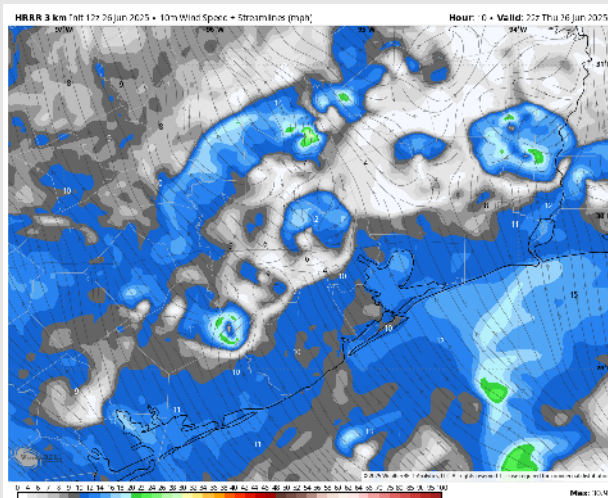
Low Temps: **N of Morgan's Point:** Mid to high 70s F. **S of Morgan's Point:** Low 80s F.

Visibility: No fog concerns today, however, a few downpours may limit visibility.

Precip Image: 4 PM CT



Wind Speed:
5 PM CT



Low Temps
FRI AM

Houston Pilots: FRI 6/27/2025

Forecast Discussion

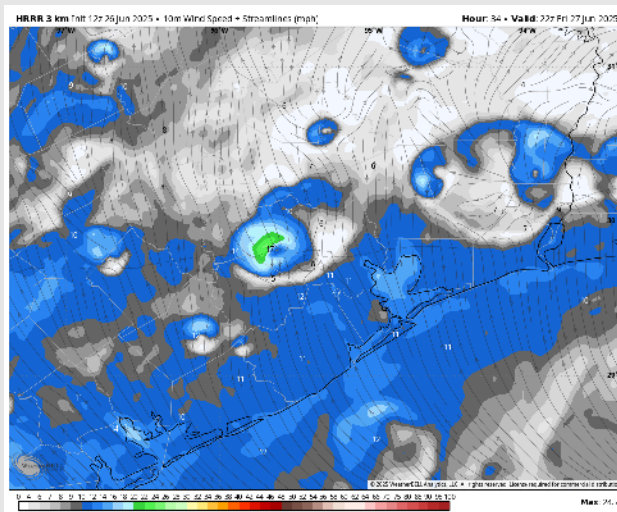
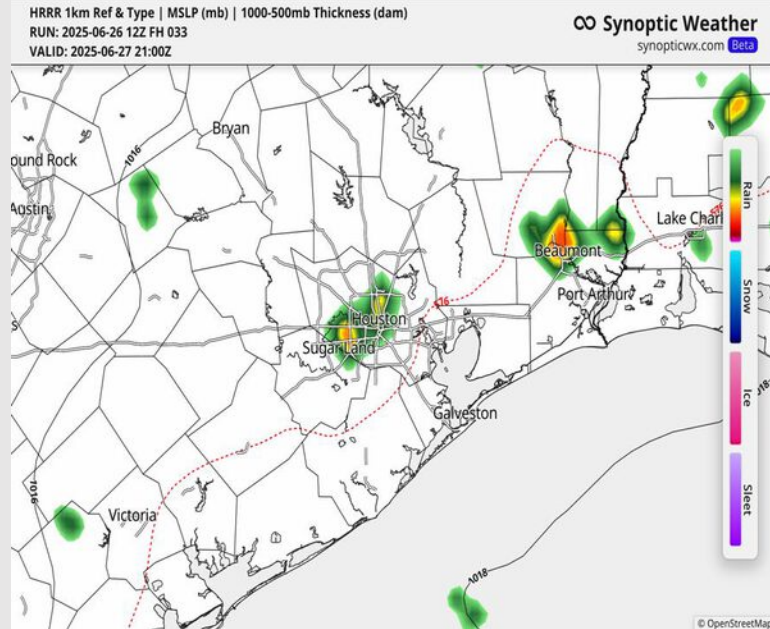
Precip: Isolated showers possible from 4AM - 9AM with additional isolated showers and storm chances through 8PM. Greatest coverage is between 1 - 6PM, and N of Morgan's Point. **A few isolated storms are favored to have wind gusts of up to 30 kts and lightning.**

Wind: Winds will be out of the SE Friday. **N of Morgan's Point:** Winds will be at 3- 9 kts. **S of Morgan's Point:** Winds will be at 4 - 10 kts.

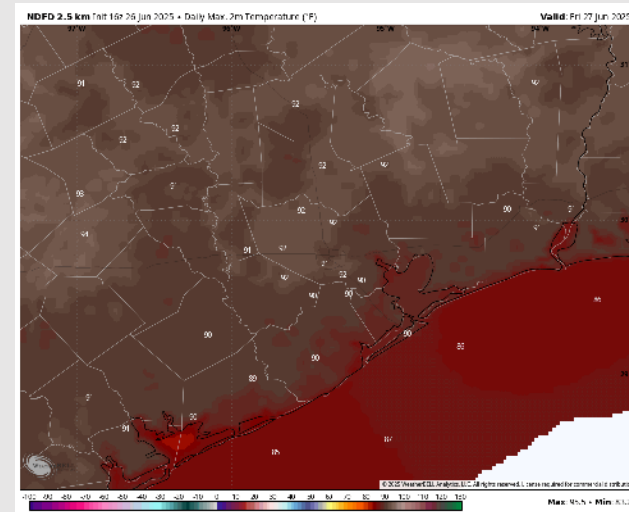
High Temps: **N of Morgan's Point:** Low 90s F. **S of Morgan's Point:** Upper 80s F.

Visibility: No fog concerns Friday, however, a few downpours may limit visibility.

Precip Image: 5 PM CT



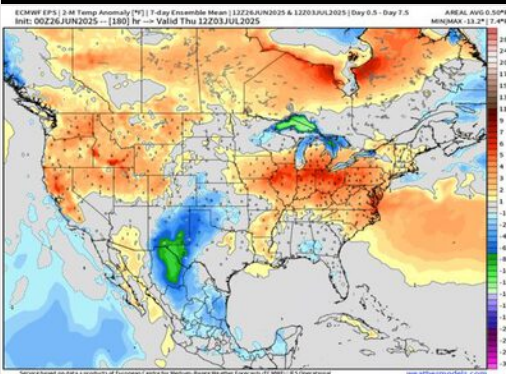
Wind Speed:
5 PM CT



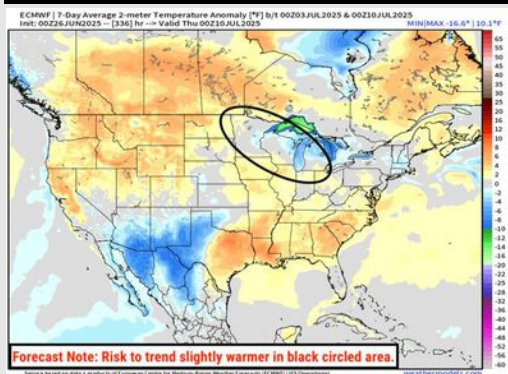
High Temps
Friday

Houston Pilots: 6/26/25

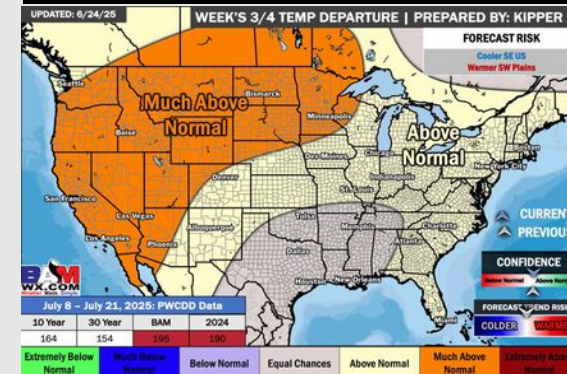
Next 7 Day Temperature Departure



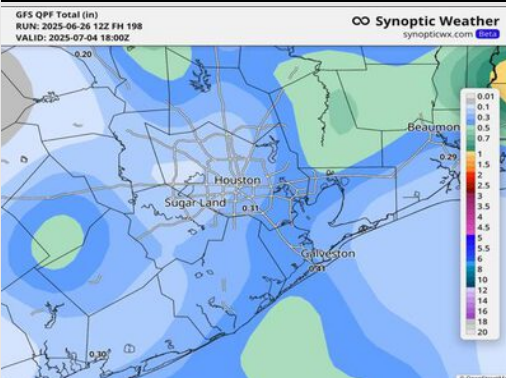
8-14 Day Temperature Departure



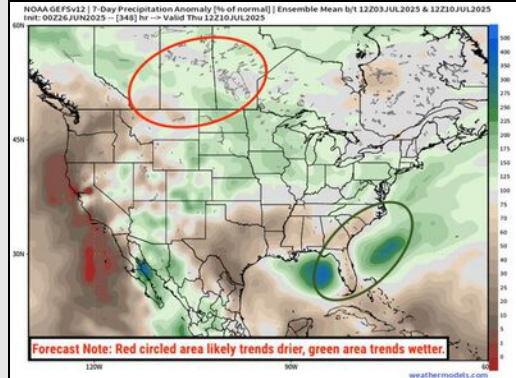
15-30 Day Temperature Departure



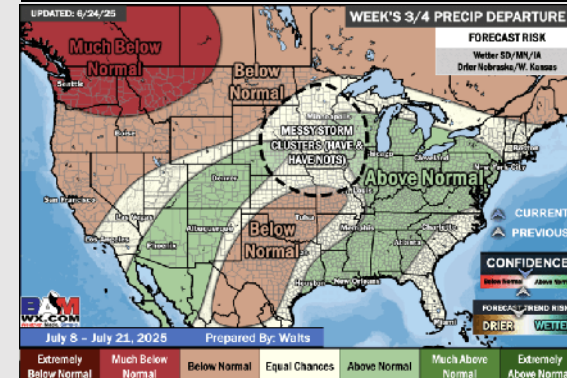
Next 7 Day Total Precipitation



8-14 Day % of Average Precip.



15-30 Day % of Average Precip.



- Temps are expected to be near normal the next 7 days. Scattered rain chances expected through the mid-week.
- Above normal temps and drier than normal conditions are favored for days 8 – 14.
- Near normal temperatures are favored into early July along with slightly above normal rainfall chances.