

# Houston Pilots Forecast Package

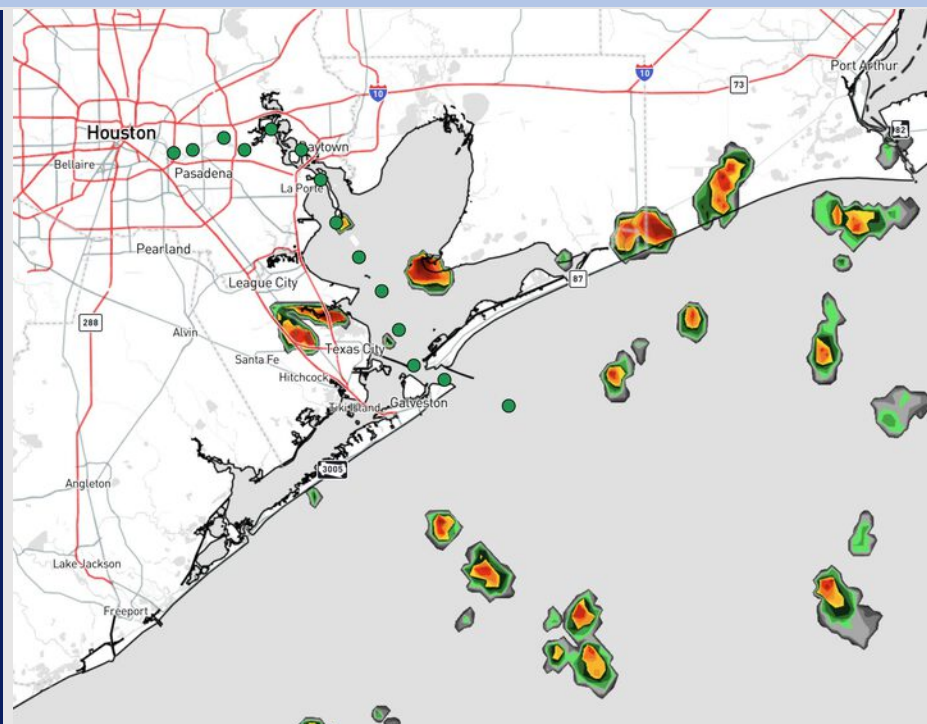


Updated: 10:40 PM CT  
Tuesday, June 24, 2025

Forecaster: Sam Lang

## Weather Headlines

- Scattered rain chances will continue into mid-week. **A few stronger storms containing frequent lightning, hail, heavy downpours and wind gusts of 30+ kts will be in play over the next 48 hours.**
- Winds will be relatively calm over the next 72 hours.
- See favored 2025 Hurricane Season Outlook below! No notable development is favored in the Gulf over the next 7 days.



**Current Radar: 10:40 PM CT**

As always, please do not hesitate to reach out to us with any forecast questions at **(317)-560-8122**. **Press 1 for forecast questions.**

**You can also access real-time forecast updates and 24/7 meteorological chat assistance on your [Clarity](#) app. Click [here](#) for login assistance.**



# Houston Pilots Tropical Update

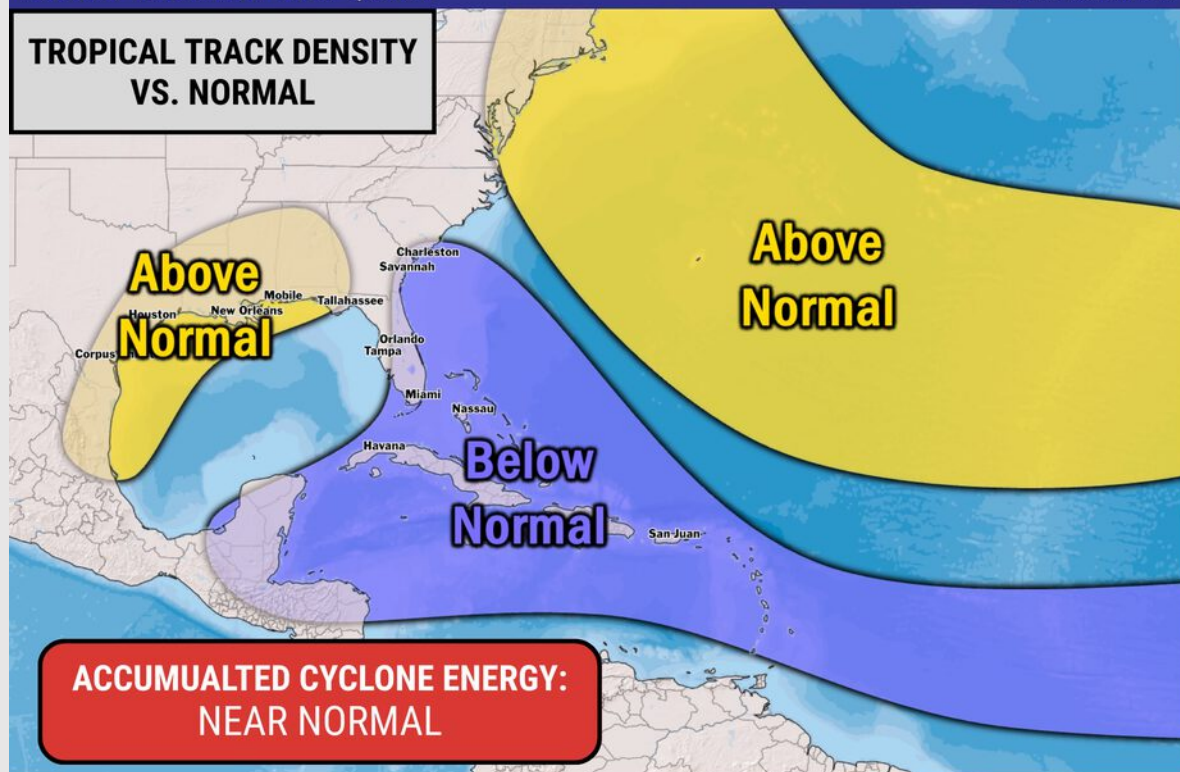
## Seasonal Hurricane Outlook

### 2025 HURRICANE SEASON

ISSUED: THURSDAY MAY 1, 2025



**TROPICAL TRACK DENSITY  
VS. NORMAL**



### KEY SEASON NOTES

**14 - 18**

Named Storms

**6 - 9**

Hurricanes

**2 - 4**

Major Hurricanes

Graphic to the left represents our favored seasonal outlook for the 2025 Hurricane Season. Conditions expected to be more favorable for tropical development within the Gulf this season.

No notable tropical development is expected over the next 7 days.

# Houston Pilots Visibility Chart (miles)



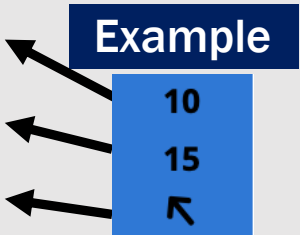
Visibility	Wed 12 am	Wed 1 am	Wed 2 am	Wed 3 am	Wed 4 am	Wed 5 am	Wed 6 am	Wed 7 am	Wed 8 am	Wed 9 am	Wed 10 am	Wed 11 am	Wed 12 pm	Wed 1 pm	Wed 2 pm	Wed 3 pm	Wed 4 pm	Wed 5 pm	Wed 6 pm	Wed 7 pm	Wed 8 pm	Wed 9 pm	Wed 10 pm	Wed 11 pm
Houston Pilots N - 610 Bridge	10	10	10	10	9	8	10	10	8	10	10	10	10	10	10	10	10	9	9	10	10	10	10	10
Houston Pilots M - Kinder 1	10	10	10	10	9	8	10	10	8	10	10	10	10	10	10	10	10	9	10	10	10	10	10	10
Houston Pilots L - Greens Bayou	10	10	10	10	9	10	10	10	9	10	10	4.9	9	10	10	10	10	10	10	10	10	10	10	10
Houston Pilots K - Shell Crude	10	10	10	10	9	10	10	10	10	10	10	4.9	10	10	10	10	10	10	10	10	10	10	10	10
Houston Pilots J - Lynchburg Ferries	10	10	10	10	10	10	10	10	9	10	10	2.9	10	10	10	10	10	10	10	10	10	10	10	10
Houston Pilots I - Exxon 3	10	10	10	10	10	10	10	10	10	10	10	2.5	10	10	10	10	10	10	10	10	10	10	10	10
Houston Pilots H - Morgans Point	10	10	10	10	10	10	10	10	10	10	9	2.5	10	10	10	10	10	10	10	10	10	10	10	10
Houston Pilots G - 75/76	10	10	10	10	10	10	10	10	10	10	7.9	6.9	10	10	10	10	10	10	10	10	10	10	10	10
Houston Pilots F - 63/64	10	10	10	10	10	10	10	10	10	10	6.9	6.9	10	10	10	10	10	10	10	10	10	10	10	10
Houston Pilots E - 51/52	10	10	10	10	10	10	10	10	10	10	3.9	9	10	10	10	10	10	10	10	10	10	10	10	10
Houston Pilots D - 37/38	10	10	10	10	10	10	10	10	10	10	3.9	9	10	10	10	10	10	10	10	10	10	10	10	10
Houston Pilots C - 25/26	10	10	10	10	10	10	10	10	10	10	3.9	10	10	10	10	10	10	10	10	10	10	10	10	10
Houston Pilots B - 11/12	10	10	10	10	10	10	10	10	10	10	6.9	10	10	10	10	10	10	10	10	10	10	10	10	10
Houston Pilots A - 1 & 2 Bravo	10	10	10	10	10	10	10	10	10	10	10	10	10	10	10	10	10	10	10	10	10	10	10	10

NOTE: This is automated data that may/may not agree with the official BAM thinking that's found on the daily slides or special visibility report slides. This data should be used as a guide only

# Houston Pilots Wind Chart



Sustained Wind 10 Knots  
Gusts 15 Knots  
Wind from the SE



Wind	Wed 12 am	Wed 1 am	Wed 2 am	Wed 3 am	Wed 4 am	Wed 5 am	Wed 6 am	Wed 7 am	Wed 8 am	Wed 9 am	Wed 10 am	Wed 11 am	Wed 12 pm	Wed 1 pm	Wed 2 pm	Wed 3 pm	Wed 4 pm	Wed 5 pm	Wed 6 pm	Wed 7 pm	Wed 8 pm	Wed 9 pm	Wed 10 pm	Wed 11 pm
Houston Pilots N - 610 Bridge	5 9 ←	5 8 ←	3 8 ←	3 8 ←	3 7 ←	3 8 ←	3 7 ←	3 7 ←	3 7 ↙	3 8 ↙	5 9 ↖	6 12 ↖	7 13 ↖	8 15 ↖	8 16 ↖	8 17 ↖	8 17 ↖	8 17 ↖	8 17 ↖	8 16 ↖	7 14 ↖	6 13 ↖	6 10 ↖	
Houston Pilots M - Kinder 1	5 9 ←	5 9 ←	3 8 ←	3 8 ←	3 7 ←	3 7 ←	3 7 ←	3 7 ←	3 7 ↙	3 8 ↙	5 9 ↖	6 12 ↖	7 13 ↖	8 15 ↖	8 16 ↖	8 17 ↖	8 17 ↖	8 17 ↖	8 17 ↖	8 16 ↖	7 14 ↖	6 13 ↖	6 10 ↖	
Houston Pilots L - Greens Bayou	5 9 ←	3 8 ←	3 8 ←	3 8 ←	3 7 ↙	3 7 ↙	3 7 ↙	3 7 ↙	3 7 ↙	3 7 ↙	5 9 ↖	6 10 ↖	7 13 ↖	8 15 ↖	8 16 ↖	8 17 ↖	8 17 ↖	8 17 ↖	8 17 ↖	8 16 ↖	7 14 ↖	6 13 ↖	5 9 ↖	
Houston Pilots K - Shell Crude	5 9 ←	5 9 ←	3 8 ←	3 8 ←	3 7 ↙	3 7 ↙	3 7 ↙	3 7 ↙	3 7 ↙	3 7 ↙	5 9 ↖	6 10 ↖	7 13 ↖	8 15 ↖	8 17 ↖	9 17 ↖	9 17 ↖	9 17 ↖	8 17 ↖	8 16 ↖	7 14 ↖	6 13 ↖	5 9 ↖	
Houston Pilots J - Lynchburg Ferries	5 9 ↙	3 8 ←	3 8 ←	3 7 ←	3 7 ↙	3 7 ↙	3 6 ↙	3 6 ↙	3 7 ↙	3 7 ↙	5 8 ↖	6 10 ↖	7 14 ↖	8 15 ↖	8 16 ↖	9 17 ↖	9 17 ↖	8 17 ↖	8 17 ↖	8 16 ↖	7 14 ↖	6 12 ↖	5 9 ↖	
Houston Pilots I - Exxon 3	8 13 ↙	8 12 ↙	8 12 ↙	8 12 ↙	7 10 ↙	7 10 ↙	6 9 ↙	6 9 ↙	6 9 ↙	7 10 ↙	7 10 ↙	8 12 ↙	8 14 ↙	9 16 ↙	10 17 ↙	10 18 ↙	12 18 ↙	12 18 ↙	12 18 ↙	12 18 ↙	12 17 ↙	10 14 ↙	9 13 ↙	8 10 ↙
Houston Pilots H - Morgans Point	8 13 ↙	8 13 ↙	8 12 ↙	8 12 ↙	7 10 ↙	7 10 ↙	6 9 ↙	6 9 ↙	6 9 ↙	7 10 ↙	7 10 ↙	8 12 ↙	8 15 ↙	9 16 ↙	10 17 ↙	10 18 ↙	12 18 ↙	12 18 ↙	12 18 ↙	12 18 ↙	12 17 ↙	10 14 ↙	9 13 ↙	8 10 ↙
Houston Pilots G - 75/76	10 15 ↙	10 14 ↙	9 14 ↙	9 14 ↙	8 13 ↙	8 13 ↙	8 12 ↙	8 12 ↙	8 10 ↙	8 12 ↙	8 13 ↙	8 14 ↙	9 16 ↙	10 17 ↙	10 18 ↙	10 20 ↙	12 20 ↙	12 20 ↙	12 18 ↙	13 20 ↙	13 17 ↙	12 16 ↙	10 15 ↙	10 14 ↙
Houston Pilots F - 63/64	10 15 ↙	10 15 ↙	10 14 ↙	9 14 ↙	8 13 ↙	8 13 ↙	8 12 ↙	8 12 ↙	8 10 ↙	8 12 ↙	8 13 ↙	9 14 ↙	9 16 ↙	10 17 ↙	10 18 ↙	10 18 ↙	12 18 ↙	12 18 ↙	12 18 ↙	12 18 ↙	12 17 ↙	12 16 ↙	10 15 ↙	10 14 ↙
Houston Pilots E - 51/52	10 15 ↙	10 15 ↙	10 15 ↙	9 14 ↙	9 13 ↙	8 13 ↙	8 12 ↙	8 12 ↙	8 12 ↙	8 13 ↙	9 15 ↙	10 16 ↙	10 17 ↙	10 18 ↙	10 18 ↙	12 18 ↙	12 18 ↙	12 18 ↙	12 18 ↙	12 18 ↙	12 17 ↙	12 16 ↙	10 15 ↙	10 14 ↙
Houston Pilots D - 37/38	10 15 ↙	10 15 ↙	10 15 ↙	9 14 ↙	9 13 ↙	8 13 ↙	8 12 ↙	8 12 ↙	8 12 ↙	8 13 ↙	9 14 ↙	10 16 ↙	10 17 ↙	10 18 ↙	10 18 ↙	10 18 ↙	12 18 ↙	12 18 ↙	12 17 ↙	12 17 ↙	10 16 ↙	10 15 ↙	10 14 ↙	10 13 ↙
Houston Pilots C - 25/26	10 15 ↙	9 14 ↙	9 14 ↙	9 14 ↙	8 13 ↙	8 13 ↙	8 12 ↙	8 12 ↙	8 12 ↙	8 13 ↙	9 14 ↙	10 16 ↙	10 17 ↙	10 17 ↙	10 17 ↙	10 17 ↙	10 17 ↙	10 17 ↙	10 17 ↙	10 17 ↙	10 16 ↙	10 15 ↙	10 14 ↙	10 13 ↙
Houston Pilots B - 11/12	8 14 ↙	8 14 ↙	8 14 ↙	8 14 ↙	8 13 ↙	8 13 ↙	7 12 ↙	7 12 ↙	7 12 ↙	7 12 ↙	8 13 ↙	8 14 ↙	9 15 ↙	10 16 ↙	10 16 ↙	10 16 ↙	10 16 ↙	10 16 ↙	10 16 ↙	10 16 ↙	9 15 ↙	9 14 ↙	8 13 ↙	8 10 ↙
Houston Pilots A - 1 & 2 Bravo	10 16 ↙	10 16 ↙	10 16 ↙	10 15 ↙	10 15 ↙	9 14 ↙	9 14 ↙	8 13 ↙	8 13 ↙	8 13 ↙	9 14 ↙	9 15 ↙	10 16 ↙	10 16 ↙	10 16 ↙	10 16 ↙	10 16 ↙	10 16 ↙	10 16 ↙	10 16 ↙	10 16 ↙	10 15 ↙	10 14 ↙	10 13 ↙

NOTE: This is automated data that may/may not agree with the official BAM thinking that's found on the daily slides.  
This data should be used as a guide only.



# Houston Pilots: WED. 6/25/2025

## Forecast Discussion

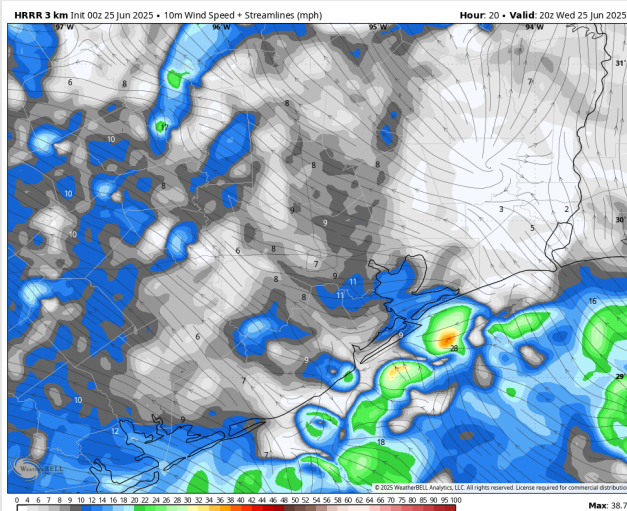
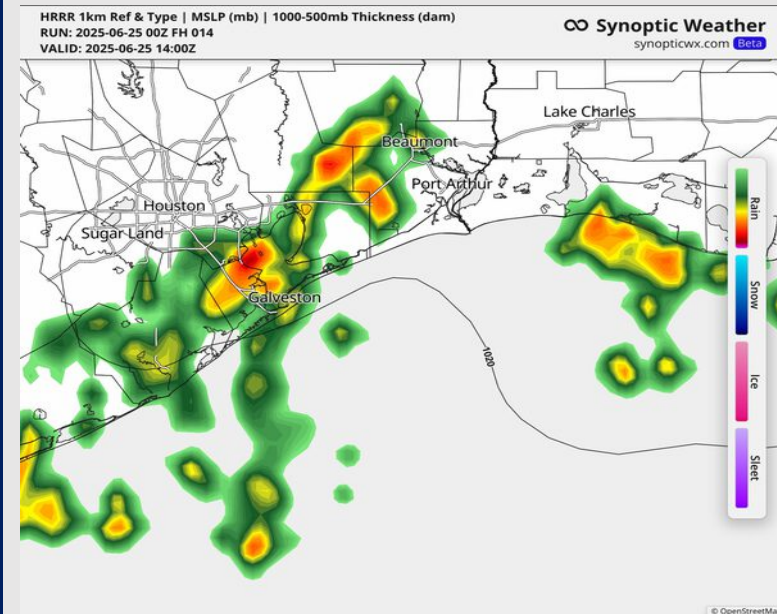
**Precip:** Scattered showers and storms in play for all Stations from 2 AM to 7PM, with the greatest coverage being between 9 AM – 2PM. A few stronger storms may contain frequent lightning, hail, and wind gusts of 30+ kts.

**Wind:** Winds will be out of the SE. **N of Morgan's Point:** Winds will be at 4 – 10 kts. **S of Morgan's Point:** Winds will be 8 – 13 kts.

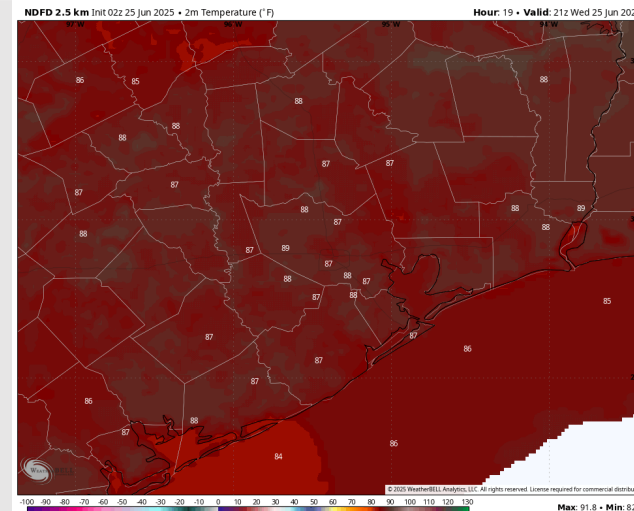
**High Temps:** **N of Morgan's Point:** Low 90s F. **S of Morgan's Point:** High 80s F.

**Visibility:** No fog concerns today, however, a few downpours may limit visibility.

## Precip Image: 9 AM CT



Wind Speed:  
3 PM CT



High Temps  
Today

# Houston Pilots: THU. 6/26/2025

## Forecast Discussion

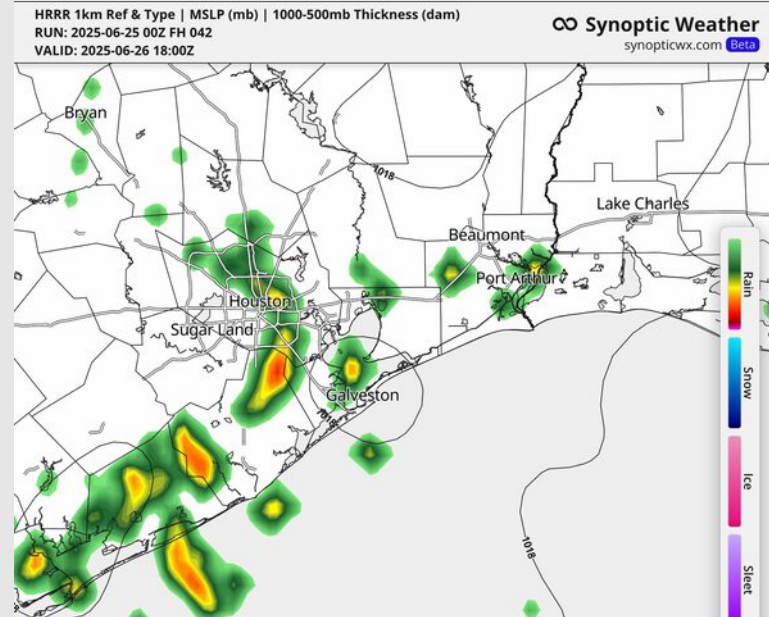
**Precip:** Hit/miss showers/storms will be possible between 2AM and 6PM. **Some isolated storms will become strong in nature, with main risks being frequent lightning, hail, heavy downpours, and wind gusts of 35 kts.** Best risk for stronger storms expected to be north and west of all Stations between 10AM – 5PM

**Wind:** Winds will be out of the SE throughout the day. **N of Morgan's Point:** Winds will be 4 – 9 kts. **S of Morgan's Point:** Winds will be at 4 – 12 kts throughout the day.

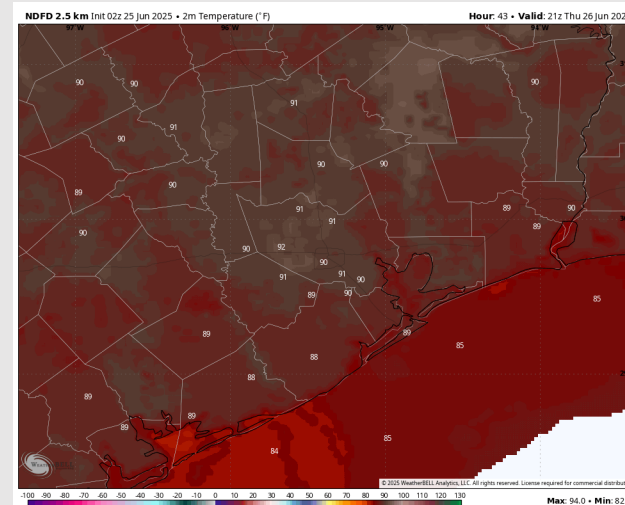
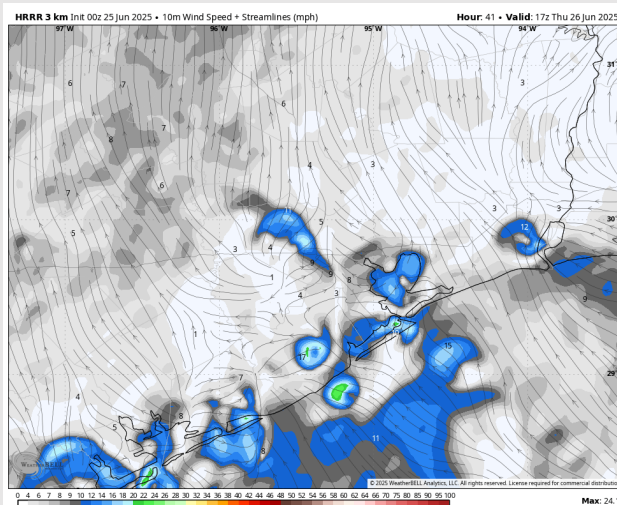
**High Temps:** **N of Morgan's Point:** Low 90s F. **S of Morgan's Point:** High 80s F.

**Visibility:** No fog concerns Thursday, however, a few downpours may limit visibility.

## Precip Image: 1 PM CT



Wind Speed:  
12 PM CT



High Temps  
Thursday

# Houston Pilots: FRI 6/27/2025

## Forecast Discussion

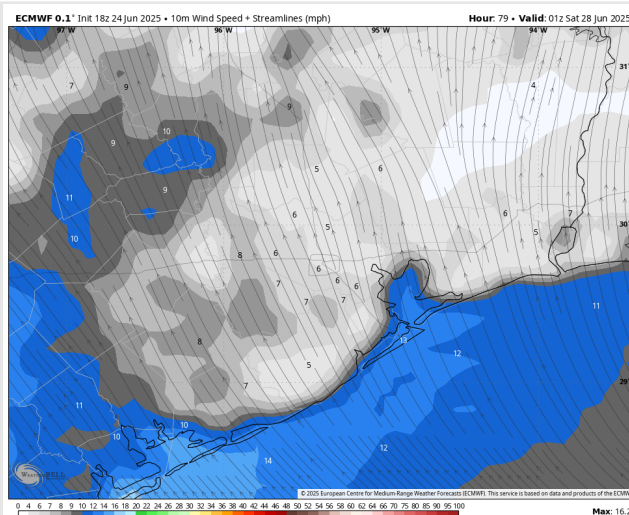
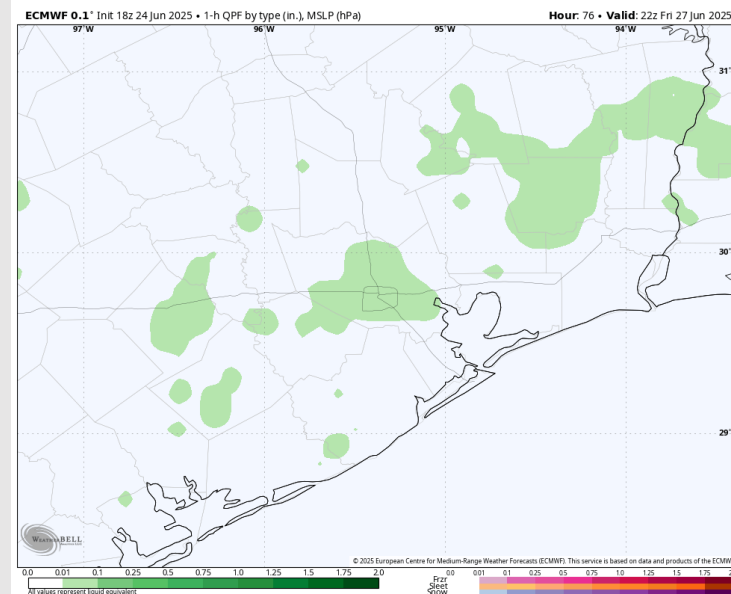
**Precip:** Isolated showers possible from 4AM through 8PM. Greatest coverage is after 3PM, N of Morgan's Point.

**Wind:** Winds will be out of the S/SE. **N of Morgan's Point:** Winds will be at 3 – 8 kts. **S of Morgan's Point:** Winds will be at 6 – 12 kts.

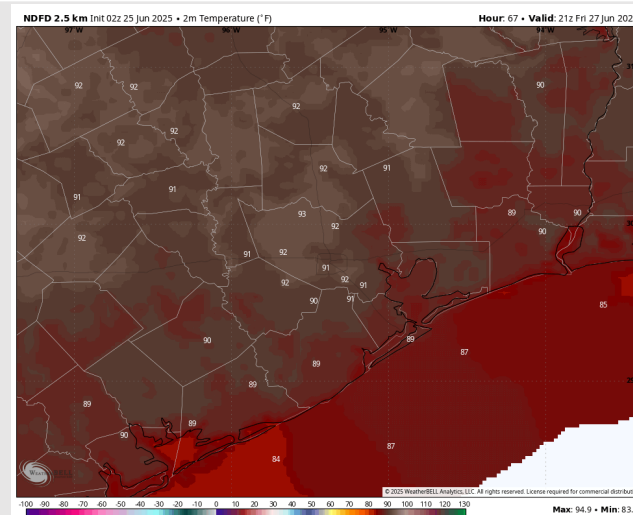
**High Temps:** **N of Morgan's Point:** Low 90s F. **S of Morgan's Point:** Upper 80s F.

**Visibility:** No fog concerns Friday, however, a few downpours may limit visibility.

## Precip Image: 5 PM CT



Wind Speed:  
8 PM CT

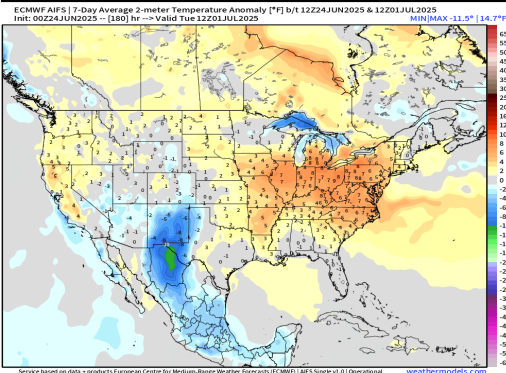


High Temps  
Friday

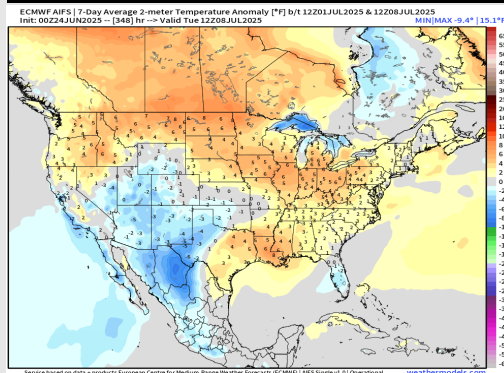


# Houston Pilots: 6/25/25

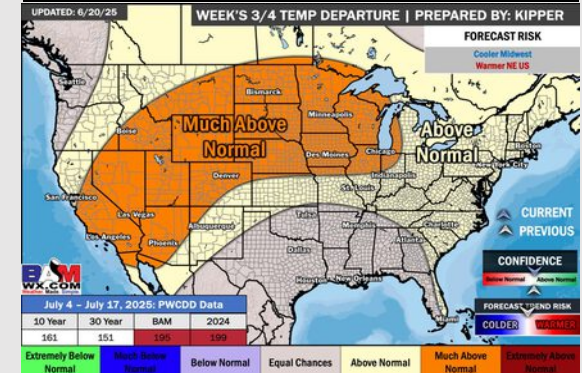
## Next 7 Day Temperature Departure



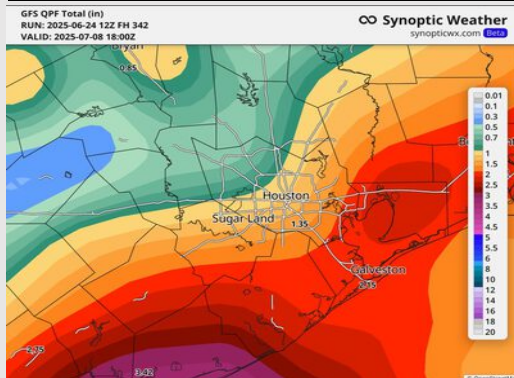
## 8-14 Day Temperature Departure



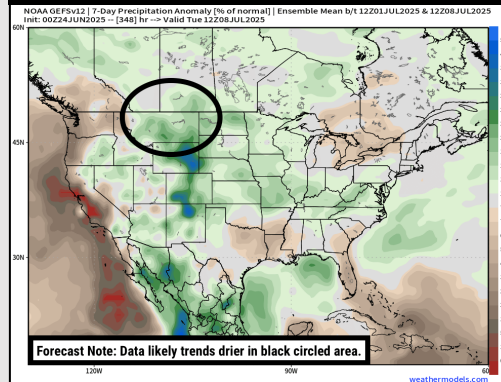
## 15-30 Day Temperature Departure



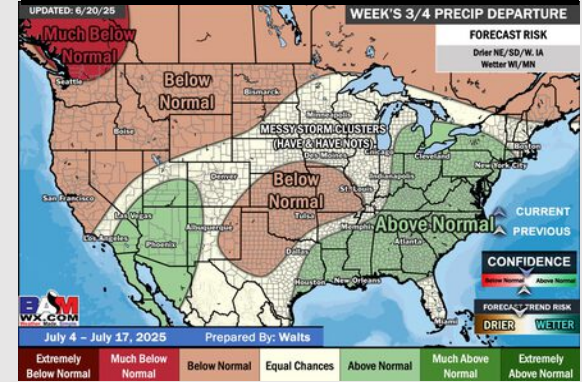
## Next 7 Day Total Precipitation



## 8-14 Day % of Average Precip.



## 15-30 Day % of Average Precip.



- Temps are expected to be near normal the next 7 days. Scattered rain chances expected through the mid-week with better coverage favored after THU the 26<sup>th</sup>
- Above normal temps and near normal rainfall is favored for days 8 – 14.
- Near normal temperatures are favored into early July along with slightly above normal rainfall chances.