

Houston Pilots Forecast Package



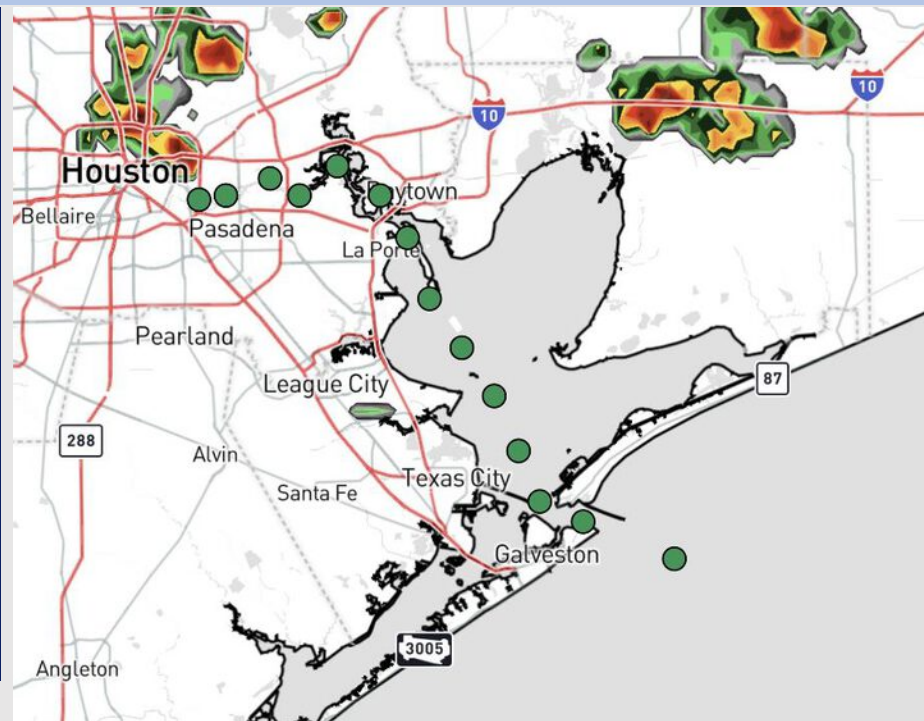
Updated: 1:00 PM CT

Monday, June 23, 2025

Forecaster: Lydia Purlee

Weather Headlines

- Scattered rain chances will continue into the start of the week. **A few stronger storms containing frequent lightning, hail, heavy downpours and wind gusts of 30+ kts will be in play over the next 72 hours.**
- Winds will be relatively calm over the next 72 hours.



Current Radar: 12:53 PM CT

As always, please do not hesitate to reach out to us with any forecast questions at **(317)-560-8122**. **Press 1 for forecast questions.**

You can also access real-time forecast updates and 24/7 meteorological chat assistance on your **Clarity** app. Click [here](#) for login assistance.



Houston Pilots Visibility Chart (miles)



Visibility	Mon 2 pm	Mon 3 pm	Mon 4 pm	Mon 5 pm	Mon 6 pm	Mon 7 pm	Mon 8 pm	Mon 9 pm	Mon 10 pm	Mon 11 pm	Tue 12 am	Tue 1 am	Tue 2 am	Tue 3 am	Tue 4 am	Tue 5 am	Tue 6 am	Tue 7 am	Tue 8 am	Tue 9 am	Tue 10 am	Tue 11 am	Tue 12 pm	Tue 1 pm
Houston Pilots N - 610 Bridge	10	10	10	10	10	10	10	10	10	10	10	10	10	10	10	10	9	10	6.9	10	10	10	10	10
Houston Pilots M - Kinder 1	10	10	10	10	10	10	10	10	10	10	10	10	10	10	10	10	9	10	6.9	10	10	10	10	10
Houston Pilots L - Greens Bayou	10	10	10	10	10	10	10	10	10	10	10	10	10	10	10	10	9	10	6.9	10	10	10	10	10
Houston Pilots K - Shell Crude	10	10	10	10	10	10	10	10	10	10	10	10	10	10	10	10	9	10	7.9	10	10	10	10	10
Houston Pilots J - Lynchburg Ferries	10	10	10	10	10	10	10	10	10	10	10	10	10	10	10	10	9	10	6.9	10	10	10	10	10
Houston Pilots I - Exxon 3	10	10	10	10	10	10	10	10	10	10	10	10	10	10	10	10	10	10	7.9	10	10	10	10	10
Houston Pilots H - Morgans Point	10	10	10	10	10	10	10	10	10	10	10	10	10	10	10	10	10	10	9	10	10	10	10	10
Houston Pilots G - 75/76	10	10	10	10	10	10	10	10	10	10	10	10	10	10	10	10	10	10	9	10	10	10	10	10
Houston Pilots F - 63/64	10	10	10	10	10	10	10	10	10	10	10	10	10	10	10	10	10	10	9	10	10	10	10	10
Houston Pilots E - 51/52	10	10	10	10	10	10	10	10	10	10	10	10	10	10	10	10	10	10	10	10	10	10	10	10
Houston Pilots D - 37/38	10	10	10	10	10	10	10	10	10	10	10	10	10	10	10	10	10	10	10	10	10	10	10	10
Houston Pilots C - 25/26	10	10	10	10	10	10	10	10	10	10	10	10	10	10	10	10	10	10	10	10	10	10	10	10
Houston Pilots B - 11/12	10	10	10	10	10	10	10	10	10	10	10	10	10	10	10	10	10	10	10	10	10	10	10	10

NOTE: This is automated data that may/may not agree with the official BAM thinking that’s found on the daily slides or special visibility report slides. This data should be used as a guide only

Houston Pilots Wind Chart



Sustained Wind 10 Knots
Gusts 15 Knots
Wind from the SE



Wind	Mon 2 pm	Mon 3 pm	Mon 4 pm	Mon 5 pm	Mon 6 pm	Mon 7 pm	Mon 8 pm	Mon 9 pm	Mon 10 pm	Mon 11 pm	Tue 12 am	Tue 1 am	Tue 2 am	Tue 3 am	Tue 4 am	Tue 5 am	Tue 6 am	Tue 7 am	Tue 8 am	Tue 9 am	Tue 10 am	Tue 11 am	Tue 12 pm	Tue 1 pm
Houston Pilots N - 610 Bridge	8 15 ↖	8 17 ↖	9 17 ↖	9 18 ↖	10 18 ↖	10 20 ↖	10 18 ↖	8 16 ↖	7 15 ↖	6 13 ↖	6 10 ↖	5 8 ↖	3 7 ↖	3 7 ↖	3 6 ↖	3 6 ↖	3 6 ↖	3 6 ↖	3 7 ↖	3 8 ↖	5 9 ↖	6 10 ↖	7 13 ↖	7 15 ↖
Houston Pilots M - Kinder 1	8 15 ↖	8 17 ↖	9 17 ↖	10 18 ↖	10 20 ↖	10 20 ↖	10 18 ↖	8 16 ↖	7 14 ↖	6 12 ↖	6 10 ↖	5 8 ↖	3 7 ↖	3 7 ↖	3 6 ↖	3 6 ↖	3 6 ↖	3 6 ↖	3 7 ↖	3 8 ↖	5 9 ↖	6 10 ↖	7 13 ↖	7 15 ↖
Houston Pilots L - Greens Bayou	8 15 ↖	8 17 ↖	9 17 ↖	10 18 ↖	10 18 ↖	10 20 ↖	10 18 ↖	8 16 ↖	7 14 ↖	6 12 ↖	5 10 ↖	3 8 ↖	3 7 ↖	3 7 ↖	3 6 ↖	3 6 ↖	3 6 ↖	3 6 ↖	3 7 ↖	3 8 ↖	5 9 ↖	6 10 ↖	7 13 ↖	7 15 ↖
Houston Pilots K - Shell Crude	8 15 ↖	8 17 ↖	9 18 ↖	10 18 ↖	10 18 ↖	10 20 ↖	10 17 ↖	8 16 ↖	7 14 ↖	6 12 ↖	5 10 ↖	3 8 ↖	3 7 ↖	3 7 ↖	3 6 ↖	3 6 ↖	3 6 ↖	3 6 ↖	3 7 ↖	3 7 ↖	5 9 ↖	6 10 ↖	7 13 ↖	8 15 ↖
Houston Pilots J - Lynchburg Ferries	8 15 ↖	8 16 ↖	9 17 ↖	10 18 ↖	10 18 ↖	10 18 ↖	9 17 ↖	8 16 ↖	7 14 ↖	6 12 ↖	5 9 ↖	3 8 ↖	3 7 ↖	3 6 ↖	2 6 ↖	2 6 ↖	2 5 ↖	2 6 ↖	3 6 ↖	3 7 ↖	3 8 ↖	6 10 ↖	7 13 ↖	7 14 ↖
Houston Pilots I - Exxon 3	10 16 ↖	10 17 ↖	12 20 ↖	13 20 ↖	13 20 ↖	13 20 ↖	13 18 ↖	13 17 ↖	10 16 ↖	10 15 ↖	8 13 ↖	8 12 ↖	8 10 ↖	7 10 ↖	6 9 ↖	6 8 ↖	6 8 ↖	6 8 ↖	6 9 ↖	6 9 ↖	7 10 ↖	8 12 ↖	8 14 ↖	8 15 ↖
Houston Pilots H - Morgans Point	10 16 ↖	10 17 ↖	12 20 ↖	13 20 ↖	13 20 ↖	13 20 ↖	13 20 ↖	13 17 ↖	10 16 ↖	10 15 ↖	9 14 ↖	8 13 ↖	8 12 ↖	7 10 ↖	6 9 ↖	6 8 ↖	6 8 ↖	6 8 ↖	6 9 ↖	6 9 ↖	7 10 ↖	8 12 ↖	8 14 ↖	8 15 ↖
Houston Pilots G - 75/76	10 17 ↖	10 18 ↖	13 20 ↖	13 21 ↖	13 21 ↖	14 21 ↖	14 20 ↖	13 18 ↖	13 17 ↖	12 16 ↖	10 15 ↖	10 14 ↖	9 14 ↖	8 13 ↖	8 12 ↖	7 10 ↖	7 10 ↖	7 10 ↖	7 10 ↖	7 12 ↖	8 12 ↖	8 14 ↖	8 15 ↖	9 16 ↖
Houston Pilots F - 63/64	10 17 ↖	10 18 ↖	12 20 ↖	13 21 ↖	13 21 ↖	13 20 ↖	13 20 ↖	13 18 ↖	12 17 ↖	12 16 ↖	10 15 ↖	10 15 ↖	9 14 ↖	8 13 ↖	8 12 ↖	8 12 ↖	7 10 ↖	7 10 ↖	7 10 ↖	7 12 ↖	8 13 ↖	8 14 ↖	9 15 ↖	9 16 ↖
Houston Pilots E - 51/52	10 17 ↖	10 18 ↖	12 20 ↖	13 20 ↖	13 21 ↖	13 20 ↖	13 20 ↖	13 18 ↖	13 17 ↖	12 16 ↖	10 16 ↖	10 15 ↖	10 14 ↖	9 13 ↖	8 12 ↖	8 12 ↖	7 10 ↖	7 10 ↖	7 10 ↖	8 12 ↖	8 13 ↖	9 14 ↖	9 15 ↖	10 16 ↖
Houston Pilots D - 37/38	10 17 ↖	10 17 ↖	12 20 ↖	13 20 ↖	13 20 ↖	13 20 ↖	13 18 ↖	13 18 ↖	12 17 ↖	12 16 ↖	10 16 ↖	10 15 ↖	10 15 ↖	9 13 ↖	8 12 ↖	8 12 ↖	7 10 ↖	7 10 ↖	7 10 ↖	8 12 ↖	8 13 ↖	9 14 ↖	9 15 ↖	10 16 ↖
Houston Pilots C - 25/26	10 16 ↖	10 17 ↖	12 18 ↖	12 18 ↖	13 18 ↖	13 20 ↖	13 18 ↖	13 17 ↖	12 16 ↖	10 16 ↖	10 15 ↖	10 15 ↖	9 14 ↖	8 13 ↖	8 13 ↖	8 12 ↖	7 10 ↖	7 10 ↖	7 10 ↖	7 12 ↖	8 13 ↖	9 14 ↖	10 15 ↖	10 16 ↖
Houston Pilots B - 11/12	10 15 ↖	10 16 ↖	10 17 ↖	12 17 ↖	12 17 ↖	12 18 ↖	12 17 ↖	10 16 ↖	10 16 ↖	10 16 ↖	9 15 ↖	8 14 ↖	8 14 ↖	8 13 ↖	7 12 ↖	7 12 ↖	6 10 ↖	6 10 ↖	6 10 ↖	6 12 ↖	8 13 ↖	8 13 ↖	9 15 ↖	10 15 ↖
Houston Pilots A - 1 & 2 Bravo	9 15 ↖	10 16 ↖	10 16 ↖	12 17 ↖	12 17 ↖	13 18 ↖	13 18 ↖	13 17 ↖	12 17 ↖	12 17 ↖	10 16 ↖	10 16 ↖	10 15 ↖	10 15 ↖	9 14 ↖	8 13 ↖	8 12 ↖	8 12 ↖	8 12 ↖	8 12 ↖	8 13 ↖	9 14 ↖	9 15 ↖	10 15 ↖

NOTE: This is automated data that may/may not agree with the official BAM thinking that's found on the daily slides.
This data should be used as a guide only.

Houston Pilots: MON 6/23/2025

Forecast Discussion

Precip: Isolated showers/storms will be possible through 9PM. Most activity is favored to be North of All Stations. **Some isolated storms will become strong in nature, with main risks being frequent lightning, hail, heavy downpours, and wind gusts of 35 kts.**

Wind: Winds will be out of the SE throughout the day. **N of Morgan's Point:** Winds will be 5-8 kts. **S of Morgan's Point:** Winds will be at 8 – 13 kts throughout the day **with wind gusts up to 17 kts being possible.**

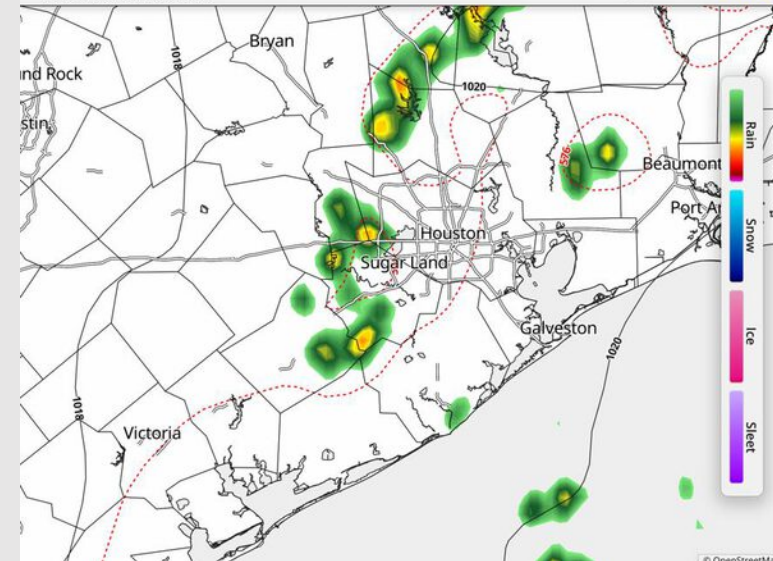
Low Temps: **N of Morgan's Point:** High 70s F. **S of Morgan's Point:** Low 80s F.

Visibility: No fog concerns today, however, a few downpours may limit visibility.

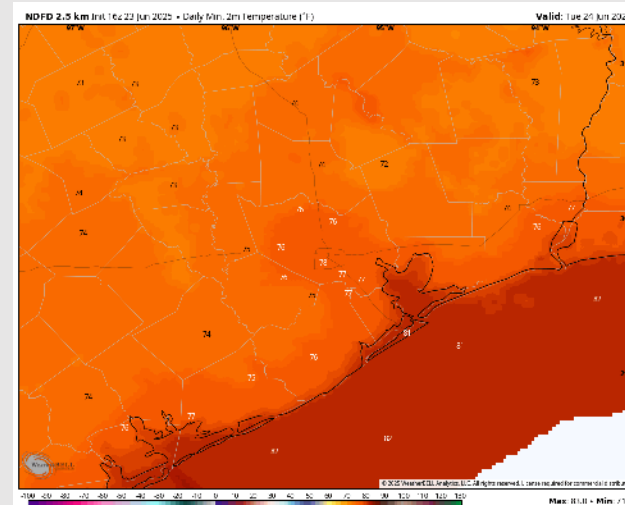
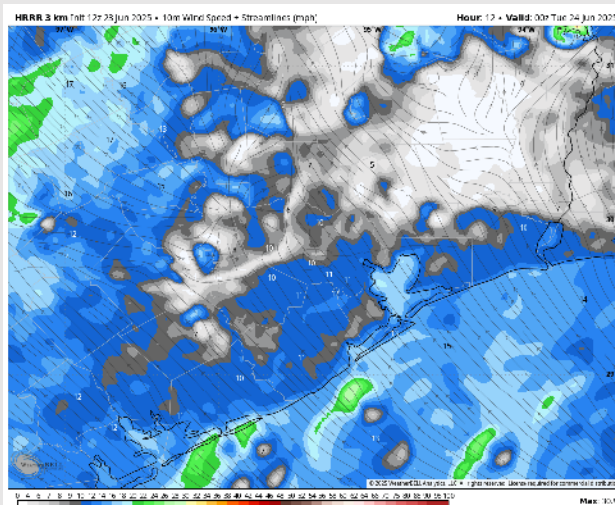
Precip Image: 3 PM CT

HRRR 1km Ref & Type | MSLP (mb) | 1000-500mb Thickness (dam)
RUN: 2025-06-23 06Z FH 014
VALID: 2025-06-23 20:00Z

Synoptic Weather
synopticwx.com [Beta](#)



Wind Speed:
7 PM CT



Low Temps
TUE AM

Houston Pilots: TUE. 6/24/2025

Forecast Discussion

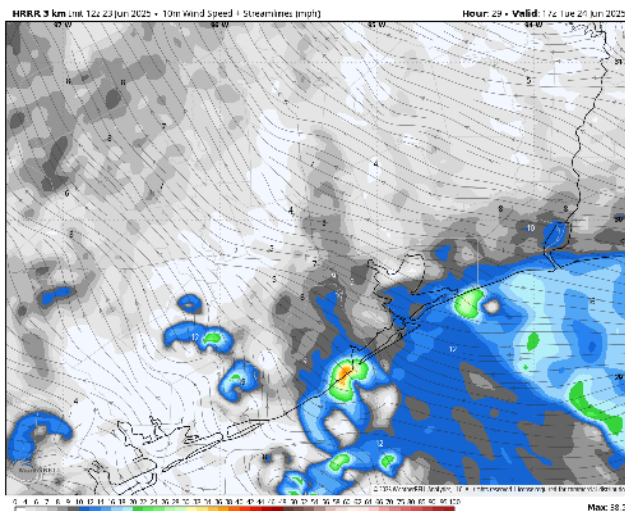
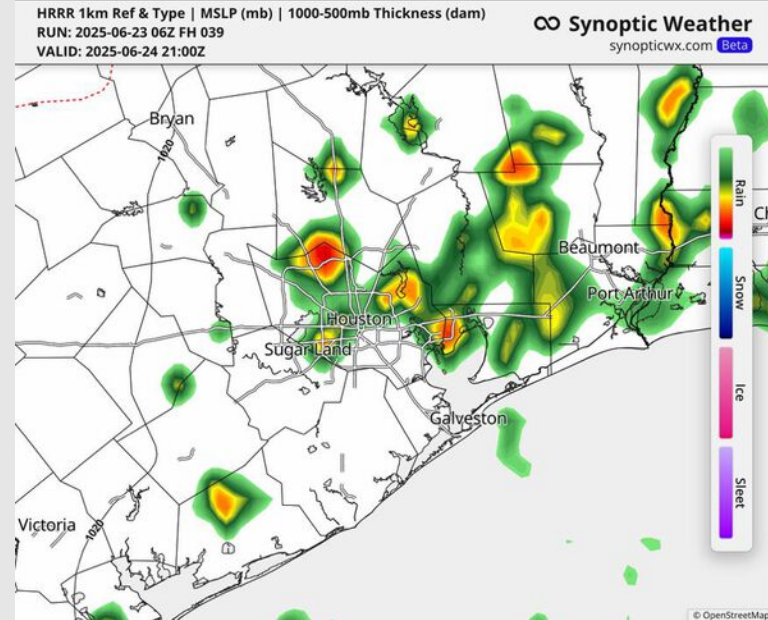
Precip: Scattered showers and storms in play for all Stations from 5AM to 7PM, with the heaviest storms occurring between 2 – 5 PM. Some storms will have risks of frequent lightning, hail, heavy downpours, and wind gusts of 35 kts.

Wind: Winds will be out of the E/SE Tuesday. **N of Morgan's Point:** Winds will be at 4 – 10 kts. **S of Morgan's Point:** Winds will be at 8 – 12 kts.

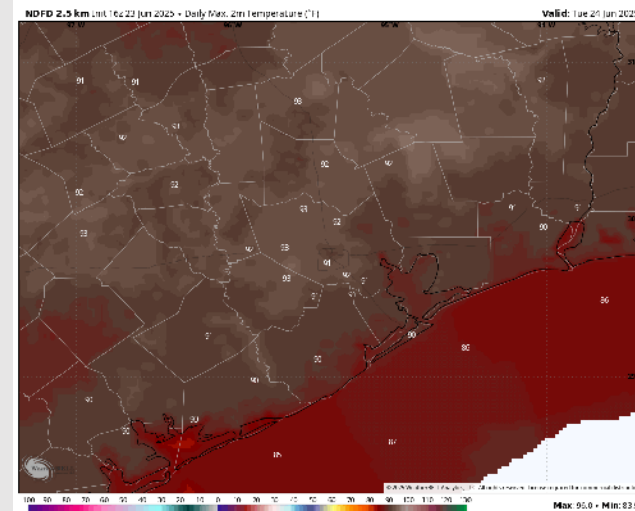
High Temps: **N of Morgan's Point:** Lower 90s F. **S of Morgan's Point:** Upper 80s F.

Visibility: No fog concerns Tuesday, however, a few downpours may limit visibility.

Precip Image: 4 PM CT



Wind Speed:
12 PM CT



High Temps
Tuesday

Houston Pilots: WED. 6/25/2025

Forecast Discussion

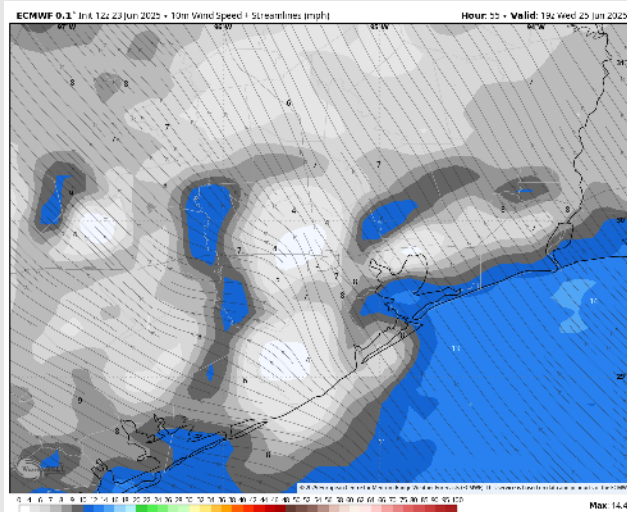
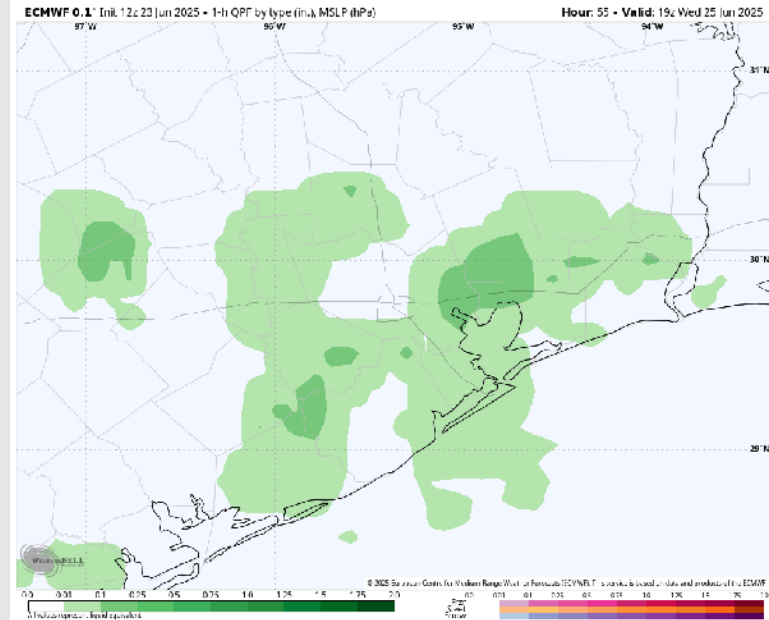
Precip: Scattered showers and storms in play for Stations S of Morgan's Point from 5 AM to 12 PM, then for all Stations through 7 PM. **A few storms may contain frequent lightning, hail, and wind gusts of 30+ kts, however better risks are expected to be to the West of ALL Stations.**

Wind: Winds will be out of the SE. **N of Morgan's Point:** Winds will be at 3 – 7 kts. **S of Morgan's Point:** Winds will be 8 – 11 kts.

High Temps: **N of Morgan's Point:** Low 90s F. **S of Morgan's Point:** High 80s F.

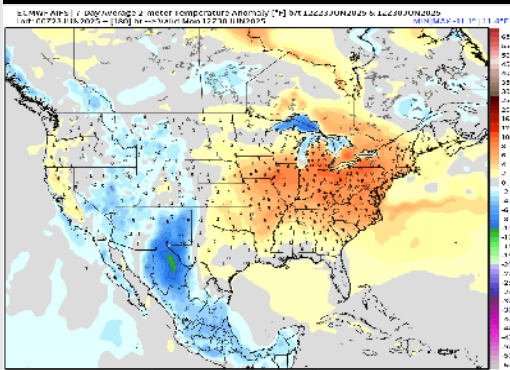
Visibility: No fog concerns Wednesday, however, a few downpours may limit visibility.

Precip Image: 2 PM CT

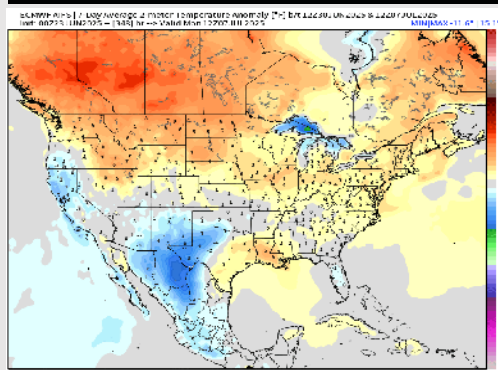


Houston Pilots: 6/23/25

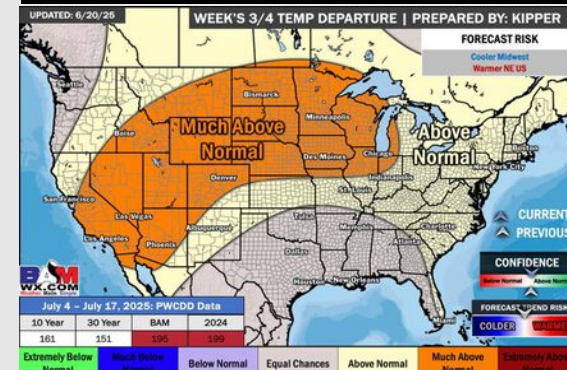
Next 7 Day Temperature Departure



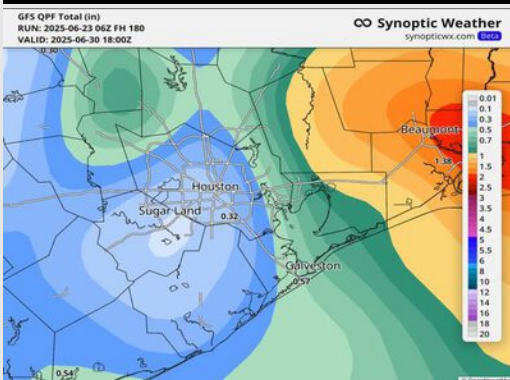
8-14 Day Temperature Departure



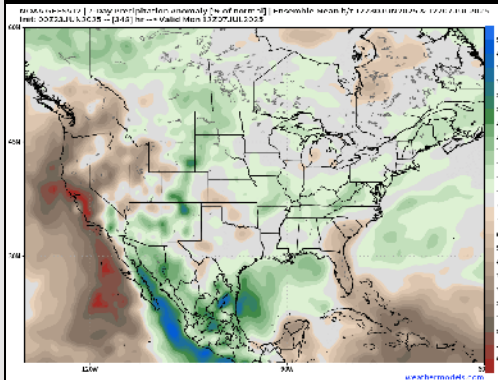
15-30 Day Temperature Departure



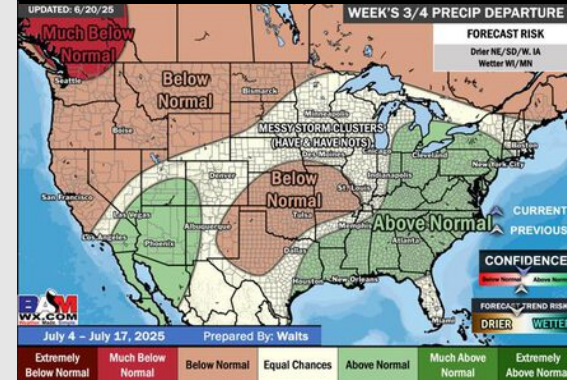
Next 7 Day Total Precipitation



8-14 Day % of Average Precip.



15-30 Day % of Average Precip.



- Temps are expected to be near normal the next 7 days. Scattered rain chances expected through the mid-week with better coverage favored after THU the 26th
- Above normal temps and near normal rainfall is favored for days 8 – 14.
- Near normal temperatures are favored into early July along with slightly above normal rainfall chances.