

Houston Pilots Forecast Package

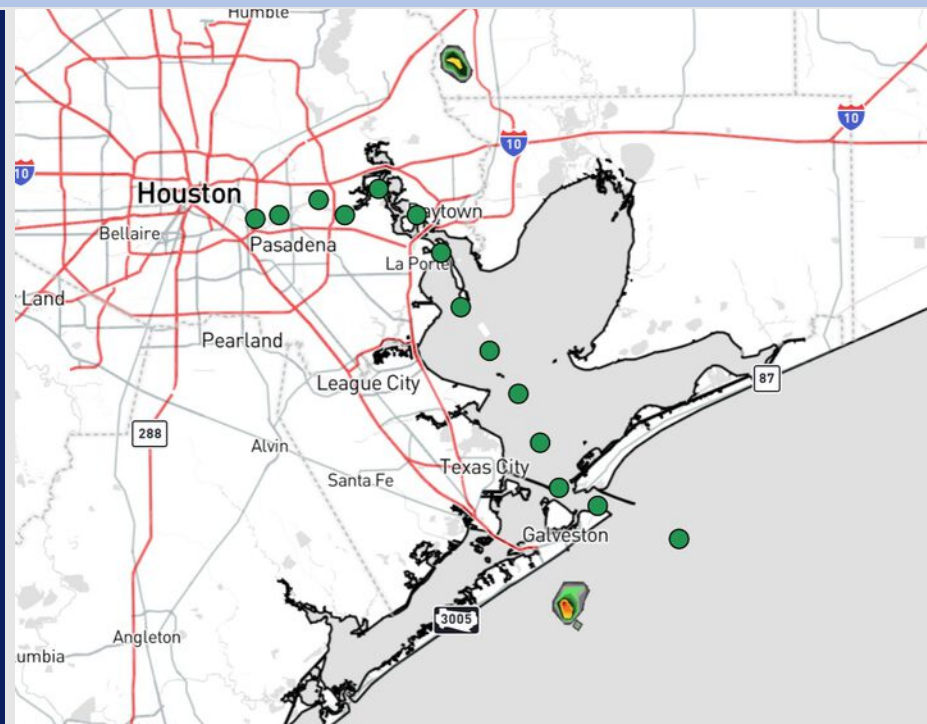


Updated: 9:00 PM CT
Sunday, June 22, 2025

Forecaster: Tyler Riggles

Weather Headlines

- Scattered rain chances will continue into the start of the week. **A few stronger storms containing frequent lightning, hail, and wind gusts of 30+ kts will be in play over the next 72 hours.**
- Winds outside of thunderstorms expected to be generally calmer, not exceeding 12 kts over the next 72 hours.
- Waves will be a bit choppy around the Boarding Station at 3 ft through the PM today.



Current Radar: 8:38 PM CT

As always, please do not hesitate to reach out to us with any forecast questions at **(317)-560-8122**. **Press 1 for forecast questions.**

You can also access real-time forecast updates and 24/7 meteorological chat assistance on your **Clarity** app. Click **here** for login assistance.



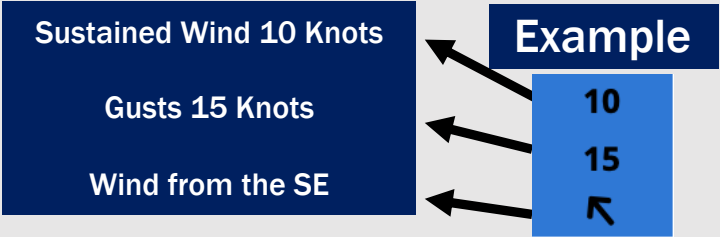
Houston Pilots Visibility Chart (miles)



Visibility	Sun 10 pm	Sun 11 pm	Mon 12 am	Mon 1 am	Mon 2 am	Mon 3 am	Mon 4 am	Mon 5 am	Mon 6 am	Mon 7 am	Mon 8 am	Mon 9 am	Mon 10 am	Mon 11 am	Mon 12 pm	Mon 1 pm	Mon 2 pm	Mon 3 pm	Mon 4 pm	Mon 5 pm	Mon 6 pm	Mon 7 pm	Mon 8 pm	Mon 9 pm
Houston Pilots N - 610 Bridge	10	10	10	10	10	10	10	10	10	10	6.9	10	10	10	10	10	10	10	10	10	10	10	10	10
Houston Pilots M - Kinder 1	10	10	10	10	10	10	10	10	10	10	6.9	10	10	10	10	10	10	10	10	10	10	10	10	10
Houston Pilots L - Greens Bayou	10	10	10	10	10	10	10	10	10	10	8	10	10	10	10	10	10	10	10	10	10	10	10	10
Houston Pilots K - Shell Crude	10	10	10	10	10	10	10	10	10	10	8	10	10	10	10	10	10	10	10	10	10	10	10	10
Houston Pilots J - Lynchburg Ferries	10	10	10	10	10	10	10	10	10	10	8	10	10	10	10	10	10	10	10	10	10	10	10	10
Houston Pilots I - Exxon 3	10	10	10	10	10	10	10	10	10	10	8	10	10	10	10	10	10	10	10	10	10	10	10	10
Houston Pilots H - Morgans Point	10	10	10	10	10	10	10	10	10	10	10	10	10	10	10	10	10	10	10	10	10	10	10	10
Houston Pilots G - 75/76	10	10	10	10	10	10	10	10	10	10	10	10	10	10	10	10	10	10	10	10	10	10	10	10
Houston Pilots F - 63/64	10	10	10	10	10	10	10	10	10	10	10	10	10	10	10	10	10	10	10	10	10	10	10	10
Houston Pilots E - 51/52	10	10	10	10	10	10	10	10	10	10	10	10	10	10	10	10	10	10	10	10	10	10	10	10
Houston Pilots D - 37/38	10	10	10	10	10	10	10	10	10	10	10	10	10	10	10	10	10	10	10	10	10	10	10	10
Houston Pilots C - 25/26	10	10	10	10	10	10	10	10	10	10	10	10	10	10	10	10	10	10	10	10	10	10	10	10
Houston Pilots B - 11/12	10	10	10	10	10	10	10	10	10	10	10	10	10	10	10	10	10	10	10	10	10	10	10	10
Houston Pilots A - 1 & 2 Bravo	10	10	10	10	10	10	10	10	10	10	10	10	10	10	10	10	10	10	10	10	10	10	10	10

NOTE: This is automated data that may/may not agree with the official BAM thinking that’s found on the daily slides or special visibility report slides. This data should be used as a guide only

Houston Pilots Wind Chart



Wind	Sun 10 pm	Sun 11 pm	Mon 12 am	Mon 1 am	Mon 2 am	Mon 3 am	Mon 4 am	Mon 5 am	Mon 6 am	Mon 7 am	Mon 8 am	Mon 9 am	Mon 10 am	Mon 11 am	Mon 12 pm	Mon 1 pm	Mon 2 pm	Mon 3 pm	Mon 4 pm	Mon 5 pm	Mon 6 pm	Mon 7 pm	Mon 8 pm	Mon 9 pm
Houston Pilots N - 610 Bridge	9	8	8	7	6	6	5	5	3	3	3	3	3	6	6	7	8	8	8	9	9	9	9	8
	17	16	15	14	13	12	10	9	8	7	7	7	9	10	13	14	16	16	17	18	18	18	17	16
	↖	↖	↖	↖	↖	↖	↖	↖	↖	↖	↖	↖	↖	↖	↖	↖	↖	↖	↖	↖	↖	↖	↖	↖
Houston Pilots M - Kinder 1	9	8	8	7	6	6	5	5	3	3	3	3	3	6	6	7	8	8	9	9	9	9	9	8
	17	16	15	14	13	12	10	9	8	7	7	7	8	10	13	14	16	16	17	18	18	18	17	16
	↖	↖	↖	↖	↖	↖	↖	↖	↖	↖	↖	↖	↖	↖	↖	↖	↖	↖	↖	↖	↖	↖	↖	↖
Houston Pilots L - Greens Bayou	8	8	7	7	6	6	5	5	3	3	3	3	3	6	6	7	8	8	9	9	9	9	9	8
	17	16	15	14	13	12	10	9	7	7	7	7	8	10	13	14	16	16	17	17	18	17	17	15
	↖	↖	↖	↖	↖	↖	↖	↖	↖	↖	↖	↖	↖	↖	↖	↖	↖	↖	↖	↖	↖	↖	↖	↖
Houston Pilots K - Shell Crude	8	8	8	7	6	6	5	5	3	3	3	3	3	6	6	8	8	8	9	10	10	9	9	8
	17	16	15	14	14	12	10	9	7	7	7	7	8	10	13	14	16	16	17	18	18	17	17	15
	↖	↖	↖	↖	↖	↖	↖	↖	↖	↖	↖	↖	↖	↖	↖	↖	↖	↖	↖	↖	↖	↖	↖	↖
Houston Pilots J - Lynchburg Ferries	8	8	7	6	6	5	5	3	3	3	2	3	3	6	7	8	8	8	9	9	9	9	8	8
	17	16	15	14	13	10	9	8	7	7	6	7	8	10	13	14	16	16	17	17	18	17	16	15
	↖	↖	↖	↖	↖	↖	↖	↖	↖	↖	↖	↖	↖	↖	↖	↖	↖	↖	↖	↖	↖	↖	↖	↖
Houston Pilots I - Exxon 3	13	13	13	12	12	10	9	8	7	6	6	6	6	7	8	9	10	10	12	13	13	13	13	12
	18	18	18	17	16	15	14	13	10	9	8	9	9	12	14	15	17	17	18	20	20	18	18	16
	↖	↖	↖	↖	↖	↖	↖	↖	↖	↖	↖	↖	↖	↖	↖	↖	↖	↖	↖	↖	↖	↖	↖	↖
Houston Pilots H - Morgans Point	13	13	13	13	12	10	9	8	8	6	6	6	7	8	8	9	10	10	12	13	13	13	13	12
	18	18	18	17	17	15	14	13	10	9	8	9	9	12	14	15	17	17	18	20	20	18	18	16
	↖	↖	↖	↖	↖	↖	↖	↖	↖	↖	↖	↖	↖	↖	↖	↖	↖	↖	↖	↖	↖	↖	↖	↖
Houston Pilots G - 75/76	14	14	14	14	13	13	10	10	9	8	7	7	8	8	8	9	10	10	12	13	13	13	13	13
	20	20	20	20	20	18	16	15	13	12	10	10	12	13	15	16	17	18	20	20	20	20	18	18
	↖	↖	↖	↖	↖	↖	↖	↖	↖	↖	↖	↖	↖	↖	↖	↖	↖	↖	↖	↖	↖	↖	↖	↖
Houston Pilots F - 63/64	14	14	14	13	13	13	12	10	9	8	7	7	8	8	8	9	10	10	12	13	13	13	13	13
	20	20	20	20	20	18	16	15	14	12	10	10	12	13	15	16	17	18	18	20	20	20	18	17
	↖	↖	↖	↖	↖	↖	↖	↖	↖	↖	↖	↖	↖	↖	↖	↖	↖	↖	↖	↖	↖	↖	↖	↖
Houston Pilots E - 51/52	14	14	14	14	14	13	12	10	9	8	8	8	8	8	9	10	10	10	12	13	13	13	13	13
	20	21	21	20	20	18	17	16	14	12	10	12	12	13	15	16	17	18	18	20	20	18	18	17
	↖	↖	↖	↖	↖	↖	↖	↖	↖	↖	↖	↖	↖	↖	↖	↖	↖	↖	↖	↖	↖	↖	↖	↖
Houston Pilots D - 37/38	14	14	14	14	14	13	12	10	9	8	8	8	8	8	9	10	10	10	12	12	13	13	13	12
	20	20	21	20	20	18	17	16	14	13	10	12	12	13	15	16	17	17	18	18	20	18	17	17
	↖	↖	↖	↖	↖	↖	↖	↖	↖	↖	↖	↖	↖	↖	↖	↖	↖	↖	↖	↖	↖	↖	↖	↖
Houston Pilots C - 25/26	13	13	13	13	13	13	10	10	9	8	8	8	8	8	9	10	10	10	10	12	12	12	12	12
	18	20	20	20	20	17	16	15	14	13	10	10	12	13	15	16	17	17	18	18	17	17	16	16
	↖	↖	↖	↖	↖	↖	↖	↖	↖	↖	↖	↖	↖	↖	↖	↖	↖	↖	↖	↖	↖	↖	↖	↖
Houston Pilots B - 11/12	12	12	12	12	12	10	10	9	8	7	7	7	7	8	8	9	10	10	10	10	10	10	10	10
	18	18	18	18	18	17	16	15	14	12	10	10	12	13	15	15	16	16	16	17	17	17	16	16
	↖	↖	↖	↖	↖	↖	↖	↖	↖	↖	↖	↖	↖	↖	↖	↖	↖	↖	↖	↖	↖	↖	↖	↖
Houston Pilots A - 1 & 2 Bravo	14	14	14	14	14	13	13	12	10	9	8	8	8	8	8	9	10	10	10	10	12	12	12	12
	20	21	21	20	20	20	17	16	15	13	12	12	12	13	14	14	16	15	16	17	17	17	17	17
	↖	↖	↖	↖	↖	↖	↖	↖	↖	↖	↖	↖	↖	↖	↖	↖	↖	↖	↖	↖	↖	↖	↖	↖

NOTE: This is automated data that may/may not agree with the official BAM thinking that's found on the daily slides.
This data should be used as a guide only.

Houston Pilots: MON 6/23/2025

Forecast Discussion

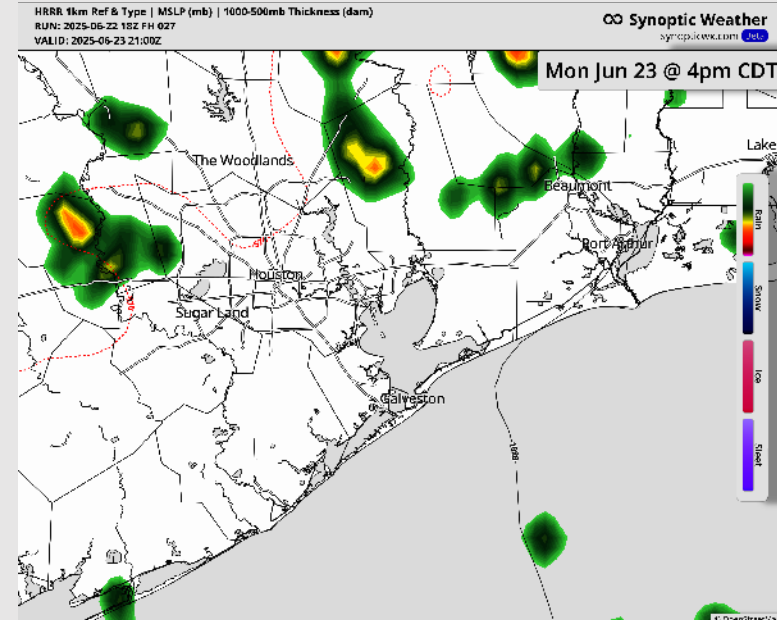
Precip: Isolated showers/storms will be possible through 8PM. Most activity is favored to be North of All Stations. **Some isolated storms will become strong in nature, with main risks being frequent lightning, hail and wind gusts of 35 kts.**

Wind: Winds will be out of the SE throughout the day. **N of Morgan's Point:** Winds will be at 2-6 kts through ~2 PM before slightly increasing to 5-10 kts. **S of Morgan's Point:** Winds will be at 8 – 13 kts throughout the day.

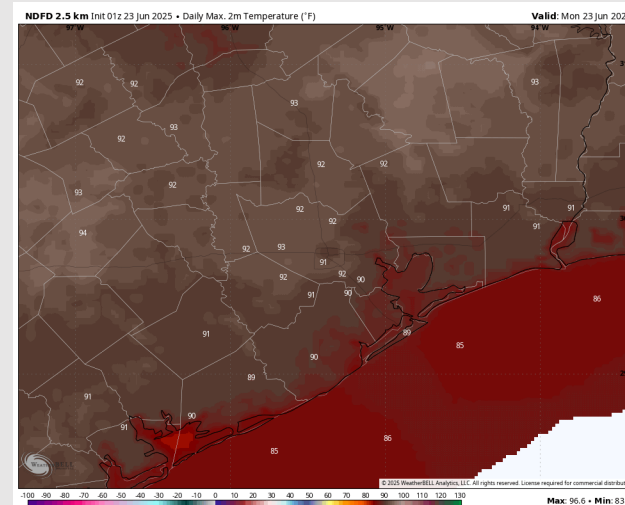
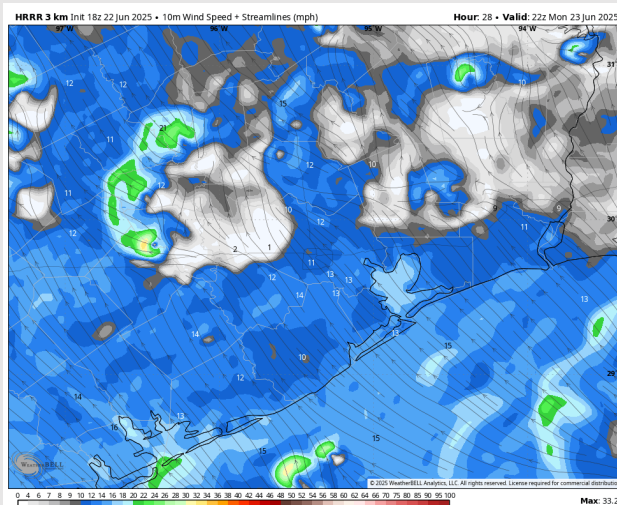
High Temps: **N of Morgan's Point:** Low 90s F. **S of Morgan's Point:** Upper 80s F.

Visibility: No fog concerns today, however, a few downpours may limit visibility.

Precip Image: 4 PM CT



Wind Speed:
5 PM CT



High Temps
Today

Houston Pilots: TUE. 6/24/2025

Forecast Discussion

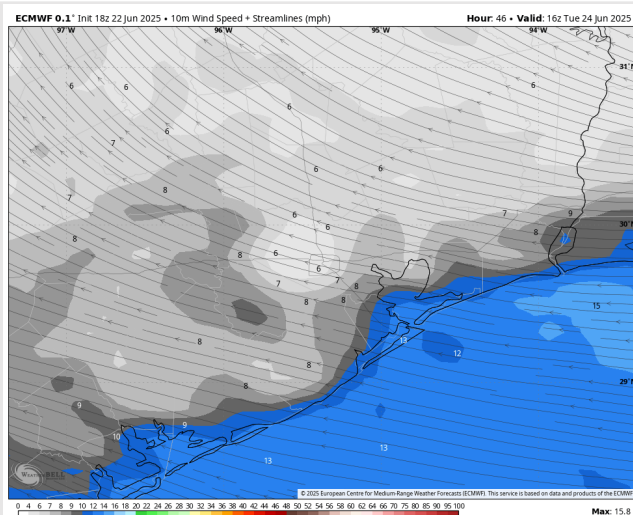
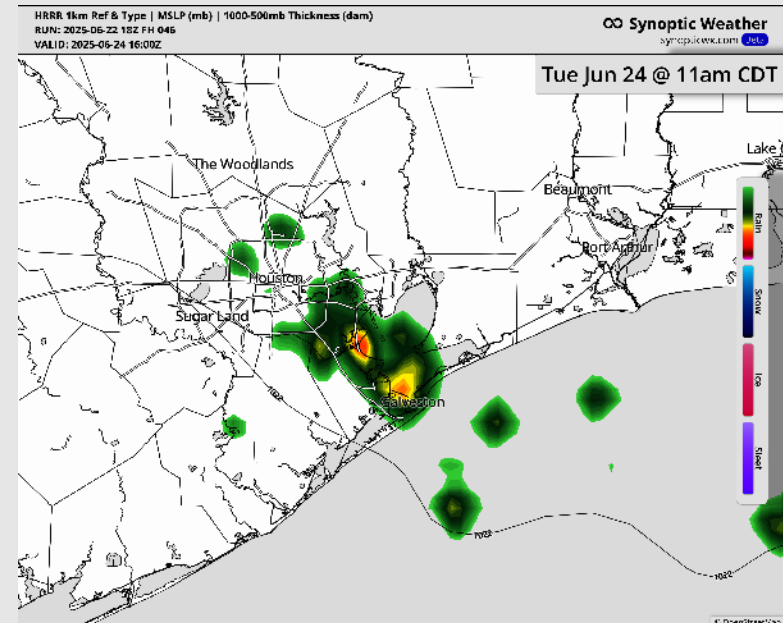
Precip: Scattered showers and storms in play for all Stations from 7AM to 7PM. **Some storms will become strong in nature, with main risks being frequent lightning, hail and wind gusts of 35 kts.**

Wind: Winds will be out of the E/SE Tuesday. **N of Morgan's Point:** Winds will be at 3 – 8 kts. **S of Morgan's Point:** Winds will be at 7 – 12 kts.

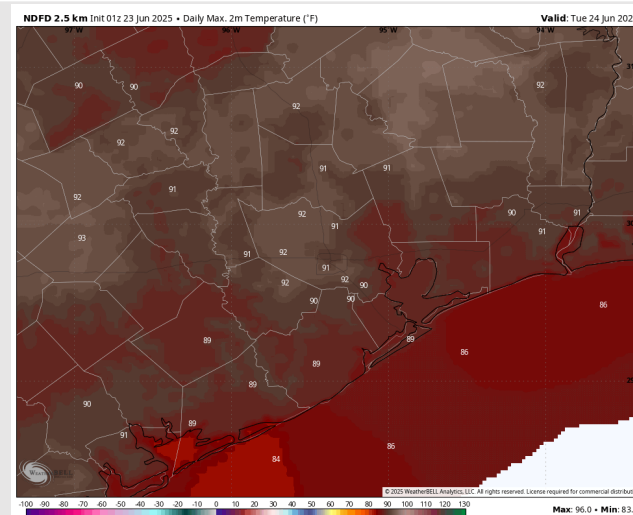
High Temps: **N of Morgan's Point:** Lower 90s F. **S of Morgan's Point:** Upper 80s F.

Visibility: No fog concerns Tuesday, however, a few downpours may limit visibility.

Precip Image: 11 AM CT



Wind Speed:
10 AM CT



High Temps
Tuesday

Houston Pilots: WED. 6/25/2025

Forecast Discussion

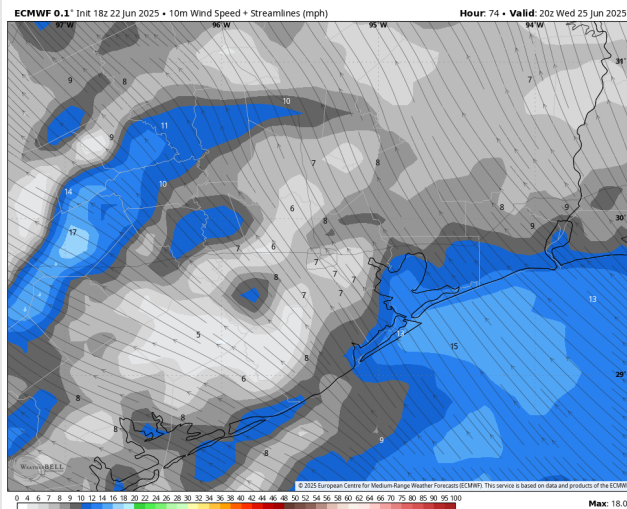
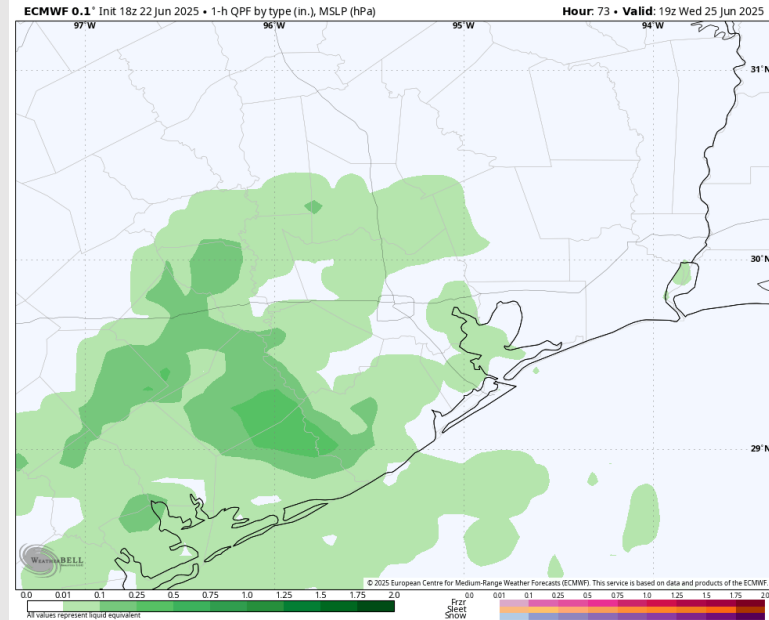
Precip: Scattered showers and storms in play for Stations S of Morgan's Point from 5 AM to 12 PM, then for all Stations through 7 PM. **A few storms may contain frequent lightning, hail, and wind gusts of 30+ kts, however better risks are expected to be to the West of ALL Stations.**

Wind: Winds will be out of the SE. **N of Morgan's Point:** Winds will be at 3 – 8 kts. **S of Morgan's Point:** Winds will be 7 – 12 kts.

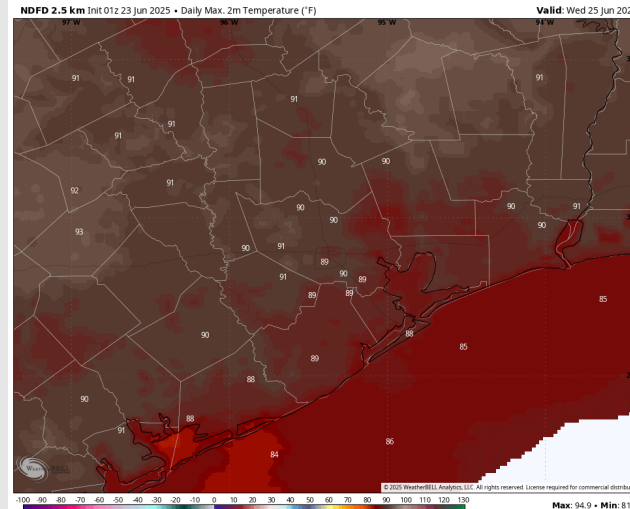
High Temps: **N of Morgan's Point:** High 80s F. **S of Morgan's Point:** Mid 80s F.

Visibility: No fog concerns Wednesday, however, a few downpours may limit visibility.

Precip Image: 2 PM CT



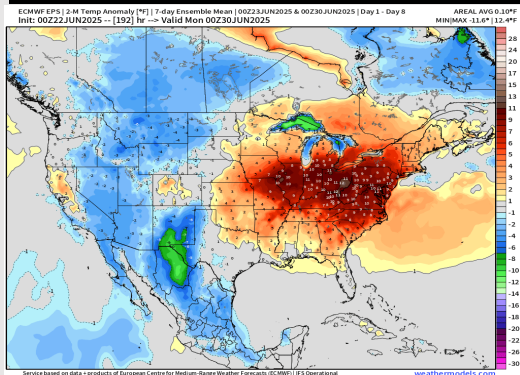
Wind Speed:
3 PM CT



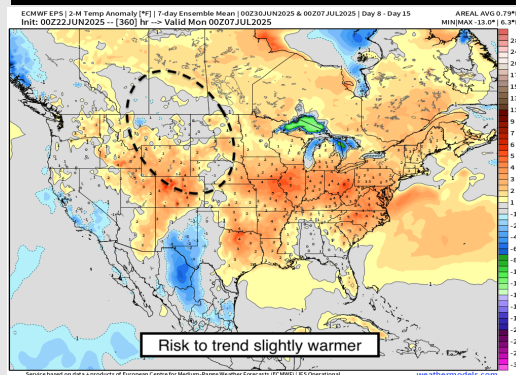
High Temps
Wednesday

Houston Pilots: 6/23/25

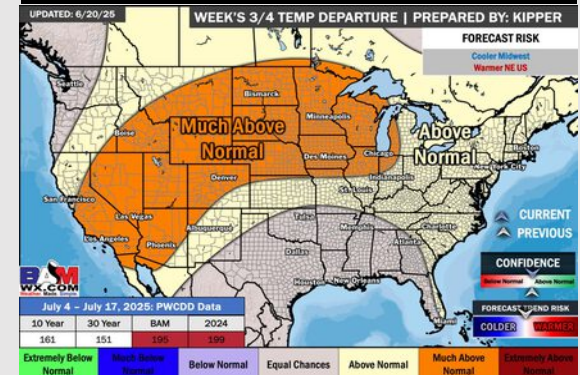
Next 7 Day Temperature Departure



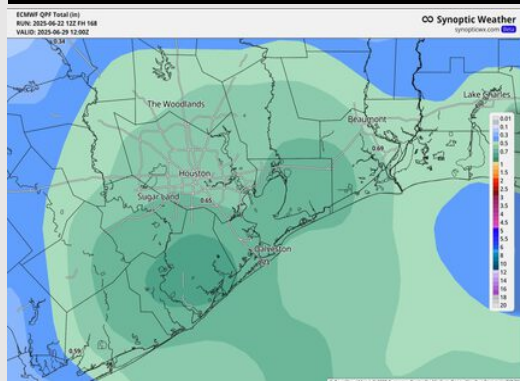
8-14 Day Temperature Departure



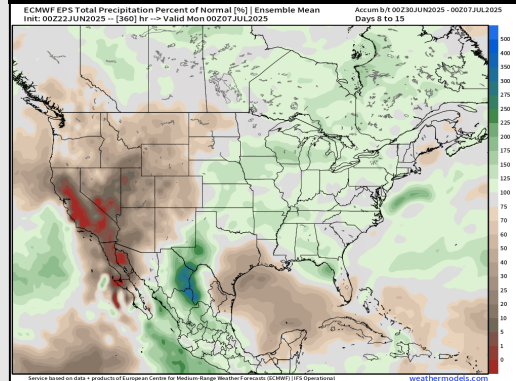
15-30 Day Temperature Departure



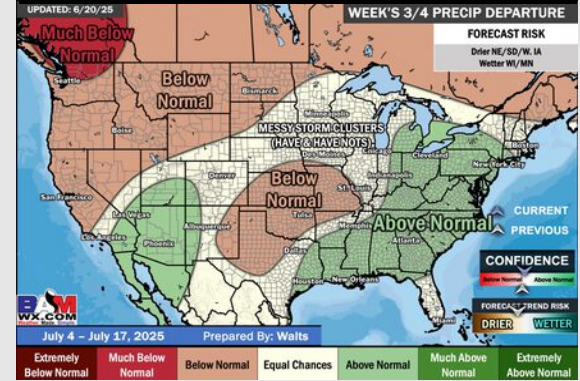
Next 7 Day Total Precipitation



8-14 Day % of Average Precip.



15-30 Day % of Average Precip.



- Temps are expected to be near normal the next 7 days. Scattered rain chances expected through the mid-week with better coverage favored after THU the 26th
- Above normal temps and below normal rainfall is favored for days 8 – 14.
- Near normal temperatures are favored into early July along with slightly above normal rainfall chances.