

Houston Pilots Forecast Package

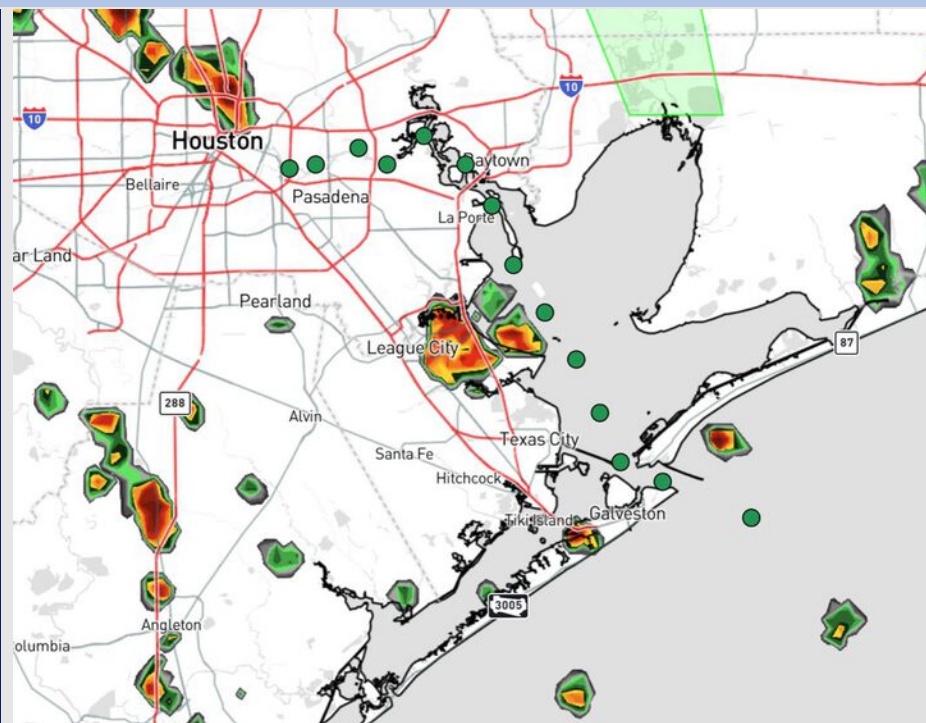


Updated: 1:30 PM CT
Sunday, June 22, 2025

Forecaster: Hope Kleitsch

Weather Headlines

- Scattered rain chances will continue into the start of the week. **A few stronger storms containing frequent lightning, hail, and wind gusts of 30+ kts will be in play over the next 72 hours.**
- **Non-thunderstorm wind gusts out of the SE of 20+ kts will be possible for Stations S of Morgan's Point for the rest of the day.**
- Waves will be a bit choppy around the Boarding Station at 3 ft through MON PM.



Current Radar: 1:30 PM CT

As always, please do not hesitate to reach out to us with any forecast questions at **(317)-560-8122**. **Press 1 for forecast questions.**

You can also access real-time forecast updates and 24/7 meteorological chat assistance on your [Clarity](#) app. Click [here](#) for login assistance.



Houston Pilots Visibility Chart (miles)



Visibility	Sun 3 pm	Sun 4 pm	Sun 5 pm	Sun 6 pm	Sun 7 pm	Sun 8 pm	Sun 9 pm	Sun 10 pm	Sun 11 pm	Mon 12 am	Mon 1 am	Mon 2 am	Mon 3 am	Mon 4 am	Mon 5 am	Mon 6 am	Mon 7 am	Mon 8 am	Mon 9 am	Mon 10 am	Mon 11 am	Mon 12 pm	Mon 1 pm	Mon 2 pm
Houston Pilots N - 610 Bridge	10	10	10	10	10	10	10	10	10	10	10	10	10	10	10	10	10	9	10	10	10	10	10	10
Houston Pilots M - Kinder 1	10	10	10	10	10	10	10	10	10	10	10	10	10	10	10	10	10	9	10	10	10	10	10	10
Houston Pilots L - Greens Bayou	10	10	10	10	10	10	10	10	10	10	10	10	10	10	10	10	10	9	10	10	10	10	10	10
Houston Pilots K - Shell Crude	10	10	10	10	10	10	10	10	10	10	10	10	10	10	10	10	10	9	10	10	10	10	10	10
Houston Pilots J - Lynchburg Ferries	10	10	10	10	10	10	10	10	10	10	10	10	10	10	10	10	10	9	10	10	10	10	10	10
Houston Pilots I - Exxon 3	10	10	10	10	10	10	10	10	10	10	10	10	10	10	10	10	10	9	10	10	10	10	10	10
Houston Pilots H - Morgans Point	10	10	10	10	10	10	10	10	10	10	10	10	10	10	10	10	10	10	10	10	10	10	10	10
Houston Pilots G - 75/76	10	10	10	10	10	10	10	10	10	10	10	10	10	10	10	10	10	10	10	10	10	10	10	10
Houston Pilots F - 63/64	10	10	10	10	10	10	10	10	10	10	10	10	10	10	10	10	10	10	10	10	10	10	10	10
Houston Pilots E - 51/52	10	10	10	10	10	10	10	10	10	10	10	10	10	10	10	10	10	10	10	10	10	10	10	10
Houston Pilots D - 37/38	10	10	10	10	10	10	10	10	10	10	10	10	10	10	10	10	10	10	10	10	10	10	10	10
Houston Pilots C - 25/26	10	10	10	10	10	10	10	10	10	10	10	10	10	10	10	10	10	10	10	10	10	10	10	10
Houston Pilots B - 11/12	10	10	10	10	10	10	10	10	10	10	10	10	10	10	10	10	10	10	10	10	10	10	10	10
Houston Pilots A - 1 & 2 Bravo	10	10	10	10	10	10	10	10	10	10	10	10	10	10	10	10	10	9	10	10	10	10	10	10

NOTE: This is automated data that may/may not agree with the official BAM thinking that's found on the daily slides or special visibility report slides. This data should be used as a guide only

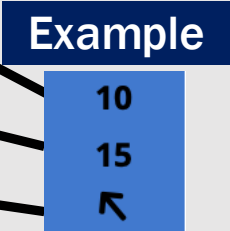
Houston Pilots Wind Chart



Forecast Confidence



Sustained Wind 10 Knots
Gusts 15 Knots
Wind from the SE



Wind	Sun 3 pm	Sun 4 pm	Sun 5 pm	Sun 6 pm	Sun 7 pm	Sun 8 pm	Sun 9 pm	Sun 10 pm	Sun 11 pm	Mon 12 am	Mon 1 am	Mon 2 am	Mon 3 am	Mon 4 am	Mon 5 am	Mon 6 am	Mon 7 am	Mon 8 am	Mon 9 am	Mon 10 am	Mon 11 am	Mon 12 pm	Mon 1 pm	Mon 2 pm
Houston Pilots N - 610 Bridge	10 21 ↖	10 22 ↖	10 22 ↖	10 22 ↖	12 22 ↖	10 21 ↖	10 20 ↖	9 17 ↖	8 16 ↖	8 15 ↖	7 14 ↖	6 13 ↖	6 12 ↖	5 10 ↖	5 9 ↖	3 8 ↖	3 7 ↖	3 7 ↖	3 7 ↖	5 9 ↖	6 12 ↖	7 13 ↖	8 15 ↖	8 16 ↖
Houston Pilots M - Kinder 1	10 21 ↖	10 22 ↖	10 22 ↖	12 22 ↖	10 22 ↖	10 21 ↖	10 20 ↖	9 17 ↖	8 16 ↖	8 15 ↖	7 14 ↖	6 13 ↖	6 12 ↖	5 9 ↖	5 9 ↖	3 8 ↖	3 7 ↖	3 7 ↖	3 7 ↖	5 9 ↖	6 12 ↖	7 13 ↖	8 15 ↖	8 16 ↖
Houston Pilots L - Greens Bayou	10 21 ↖	10 22 ↖	10 22 ↖	10 22 ↖	10 21 ↖	10 20 ↖	9 20 ↖	8 17 ↖	8 16 ↖	7 15 ↖	6 14 ↖	6 13 ↖	6 10 ↖	5 9 ↖	5 9 ↖	3 7 ↖	3 7 ↖	3 7 ↖	3 7 ↖	5 9 ↖	6 12 ↖	7 13 ↖	8 15 ↖	8 16 ↖
Houston Pilots K - Shell Crude	10 21 ↖	10 21 ↖	10 21 ↖	12 21 ↖	10 21 ↖	10 20 ↖	9 20 ↖	8 17 ↖	8 16 ↖	7 15 ↖	7 14 ↖	6 13 ↖	6 12 ↖	5 9 ↖	5 9 ↖	3 7 ↖	3 7 ↖	3 7 ↖	3 7 ↖	5 9 ↖	6 12 ↖	7 13 ↖	8 15 ↖	8 16 ↖
Houston Pilots J - Lynchburg Ferries	10 21 ↖	10 21 ↖	10 21 ↖	10 21 ↖	10 21 ↖	10 20 ↖	9 18 ↖	8 17 ↖	8 15 ↖	7 14 ↖	6 14 ↖	6 13 ↖	5 10 ↖	5 9 ↖	3 8 ↖	3 7 ↖	3 7 ↖	2 7 ↖	3 7 ↖	3 8 ↖	6 12 ↖	7 13 ↖	8 15 ↖	8 16 ↖
Houston Pilots I - Exxon 3	13 21 ↖	13 22 ↖	14 22 ↖	14 22 ↖	14 22 ↖	14 21 ↖	14 20 ↖	13 18 ↖	13 18 ↖	13 17 ↖	12 16 ↖	10 16 ↖	10 15 ↖	9 13 ↖	8 13 ↖	7 10 ↖	6 9 ↖	6 8 ↖	6 9 ↖	7 10 ↖	8 13 ↖	8 14 ↖	9 15 ↖	10 17 ↖
Houston Pilots H - Morgans Point	13 21 ↖	13 22 ↖	14 22 ↖	14 22 ↖	14 22 ↖	14 20 ↖	13 20 ↖	13 18 ↖	13 18 ↖	13 17 ↖	12 17 ↖	12 16 ↖	10 15 ↖	9 14 ↖	8 13 ↖	8 10 ↖	7 9 ↖	6 9 ↖	6 9 ↖	7 10 ↖	8 13 ↖	8 14 ↖	9 15 ↖	10 17 ↖
Houston Pilots G - 75/76	13 21 ↖	13 22 ↖	14 22 ↖	14 22 ↖	15 22 ↖	15 21 ↖	14 20 ↖	14 20 ↖	14 20 ↖	14 20 ↖	13 20 ↖	13 20 ↖	13 17 ↖	10 16 ↖	10 15 ↖	9 13 ↖	8 12 ↖	8 10 ↖	8 10 ↖	8 12 ↖	8 13 ↖	8 15 ↖	10 16 ↖	10 18 ↖
Houston Pilots F - 63/64	13 21 ↖	13 21 ↖	14 22 ↖	14 22 ↖	14 22 ↖	14 21 ↖	14 20 ↖	14 20 ↖	14 20 ↖	14 20 ↖	13 20 ↖	13 20 ↖	13 18 ↖	12 16 ↖	10 15 ↖	9 14 ↖	8 13 ↖	8 10 ↖	8 12 ↖	8 12 ↖	8 12 ↖	8 15 ↖	10 16 ↖	10 18 ↖
Houston Pilots E - 51/52	13 20 ↖	13 21 ↖	13 21 ↖	13 21 ↖	14 21 ↖	14 20 ↖	14 20 ↖	14 20 ↖	14 20 ↖	14 20 ↖	14 20 ↖	14 20 ↖	13 18 ↖	12 17 ↖	10 16 ↖	9 14 ↖	8 13 ↖	8 12 ↖	8 12 ↖	8 12 ↖	8 13 ↖	8 16 ↖	10 16 ↖	10 18 ↖
Houston Pilots D - 37/38	13 20 ↖	13 20 ↖	13 21 ↖	13 21 ↖	13 21 ↖	13 20 ↖	14 20 ↖	14 20 ↖	14 20 ↖	14 20 ↖	14 20 ↖	14 20 ↖	13 18 ↖	12 17 ↖	10 16 ↖	10 14 ↖	8 13 ↖	8 12 ↖	8 12 ↖	8 12 ↖	8 13 ↖	8 16 ↖	10 16 ↖	10 18 ↖
Houston Pilots C - 25/26	12 18 ↖	13 20 ↖	13 20 ↖	13 20 ↖	13 20 ↖	13 18 ↖	13 18 ↖	13 18 ↖	13 18 ↖	13 20 ↖	13 18 ↖	13 18 ↖	13 17 ↖	13 16 ↖	12 16 ↖	10 14 ↖	9 13 ↖	8 12 ↖	8 12 ↖	8 12 ↖	8 12 ↖	8 15 ↖	10 16 ↖	10 17 ↖
Houston Pilots B - 11/12	10 17 ↖	12 18 ↖	12 18 ↖	12 18 ↖	12 18 ↖	12 17 ↖	12 18 ↖	12 18 ↖	12 18 ↖	12 18 ↖	12 18 ↖	12 18 ↖	10 17 ↖	10 16 ↖	9 15 ↖	8 14 ↖	8 13 ↖	7 12 ↖	7 12 ↖	8 12 ↖	8 13 ↖	8 15 ↖	9 15 ↖	10 16 ↖
Houston Pilots A - 1 & 2 Bravo	10 17 ↖	12 17 ↖	12 18 ↖	13 18 ↖	13 18 ↖	13 18 ↖	13 20 ↖	14 20 ↖	14 20 ↖	14 21 ↖	14 20 ↖	14 20 ↖	13 20 ↖	13 18 ↖	12 16 ↖	10 15 ↖	9 14 ↖	8 13 ↖	8 13 ↖	8 12 ↖	8 13 ↖	8 14 ↖	9 14 ↖	10 16 ↖

NOTE: This is automated data that may/may not agree with the official BAM thinking that's found on the daily slides.
This data should be used as a guide only.

Houston Pilots: SUN. 6/22/2025

Forecast Discussion

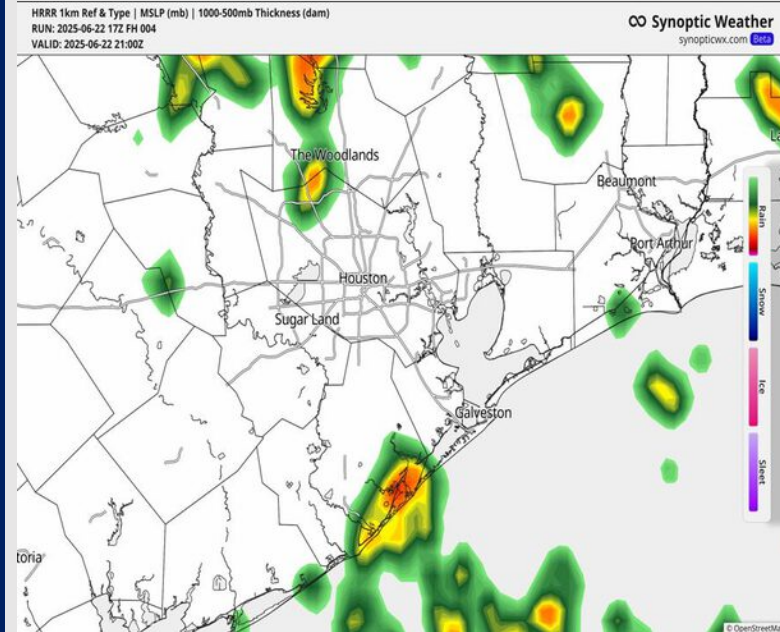
Precip: Scattered showers and storms will continue through ~7PM, with dry conditions favored after then. **A few storms may contain frequent lightning, hail, and wind gusts of 30+ kts, however better risks will be to the north of ALL Stations.**

Wind: Winds will be out of the SE. **N of Morgan's Point:** Winds will be at 5 – 10 kts for the rest of the day. **S of Morgan's Point:** Winds will be 10 – 15 kts the rest of the day. **Non-thunderstorm wind gusts of 20 kts will be possible for Stations S of Morgan's Point throughout the remainder of the day.**

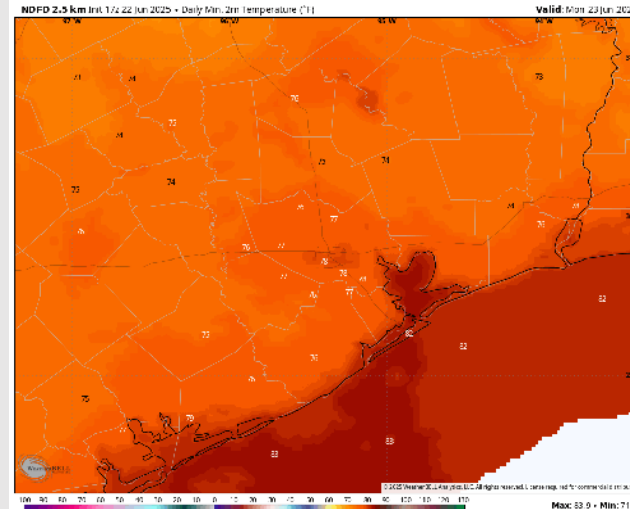
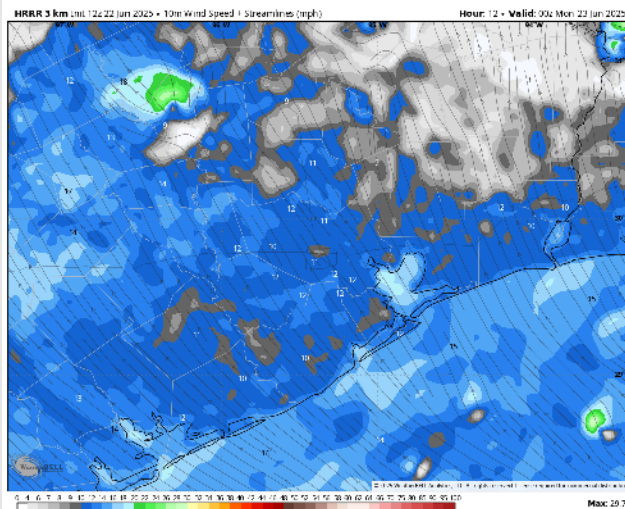
Low Temps: **N of Morgan's Point:** High 70s F. **S of Morgan's Point:** Low 80s F.

Visibility: No fog concerns today, however, a few downpours may limit visibility.

Precip Image: 4 PM CT



**Wind Speed:
7 PM CT**



**Low Temps
MON AM**

Houston Pilots: MON 6/23/2025

Forecast Discussion

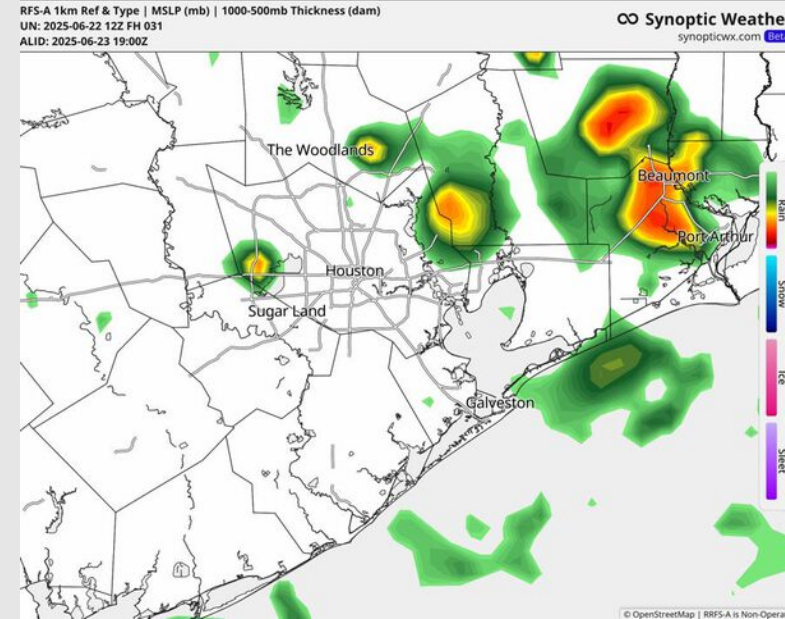
Precip: Isolated showers/storms will be possible from 5 AM to 8PM. Most activity is favored to be north of All Stations. **Some isolated storms will become strong in nature, with main risks being frequent lightning, hail and wind gusts of 35 kts.**

Wind: Winds will be out of the SE throughout MON. **N of Morgan's Point:** Winds will be at 2-6 kts through ~2 PM before slightly increasing to 4-9 kts. **S of Morgan's Point:** Winds will be at 8 – 13 kts throughout the day.

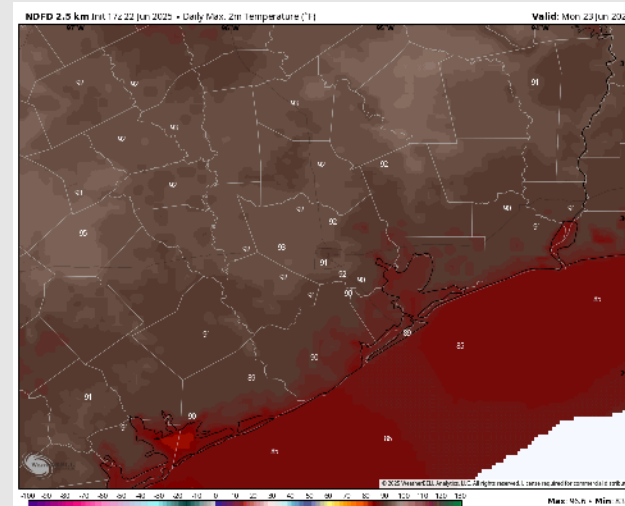
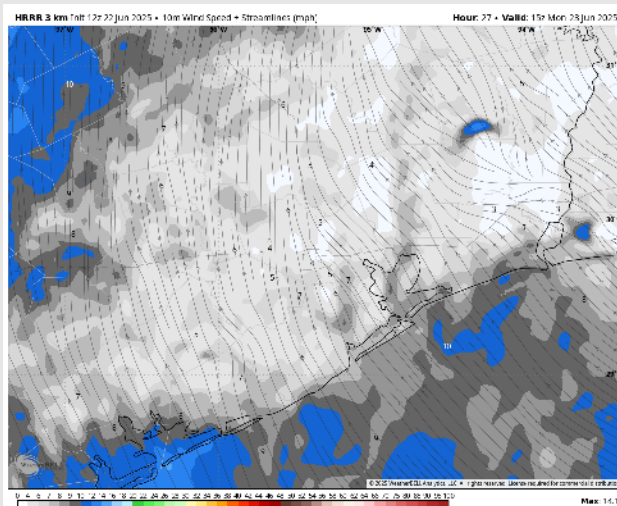
High Temps: **N of Morgan's Point:** Low 90s F. **S of Morgan's Point:** Upper 80s F.

Visibility: No fog concerns Monday, however, a few downpours may limit visibility.

Precip Image: 2 PM CT



Wind Speed:
10 AM CT



High Temps
Monday

Houston Pilots: TUE. 6/24/2025

Forecast Discussion

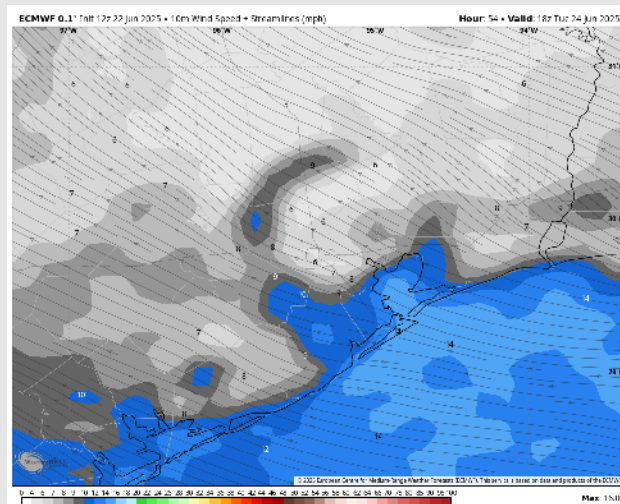
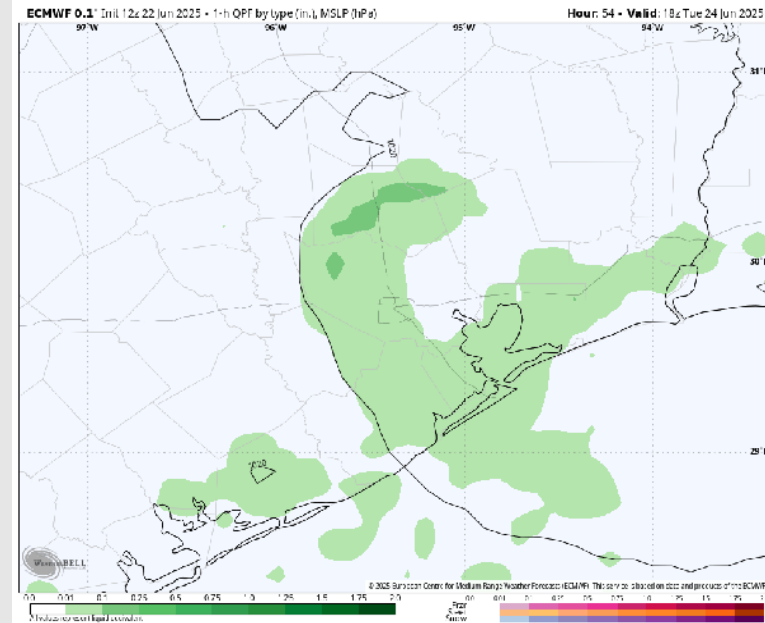
Precip: Scattered showers and storms in play for all Stations from 7AM to 7PM. **Some storms will become strong in nature, with main risks being frequent lightning, hail and wind gusts of 35 kts.**

Wind: Winds will be out of the E/SE Tuesday. **N of Morgan's Point:** Winds will be at 3 – 8 kts. **S of Morgan's Point:** Winds will be at 7 – 12 kts.

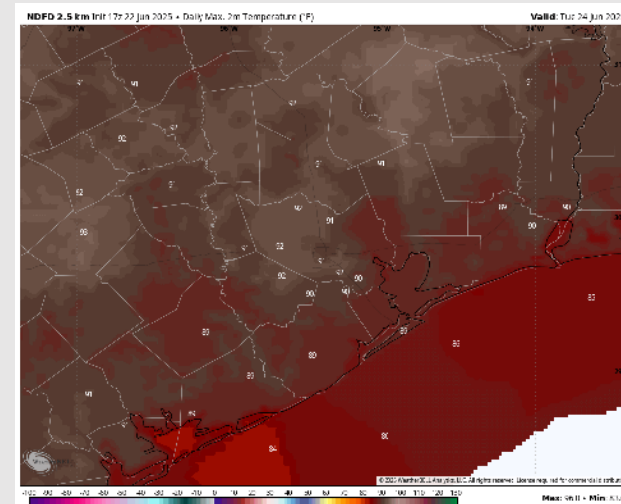
High Temps: **N of Morgan's Point:** Lower 90s F. **S of Morgan's Point:** Upper 80s F.

Visibility: No fog concerns Tuesday, however, a few downpours may limit visibility.

Precip Image: 1 PM CT



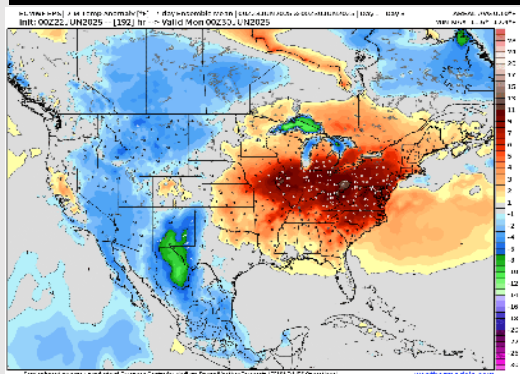
Wind Speed:
1 PM CT



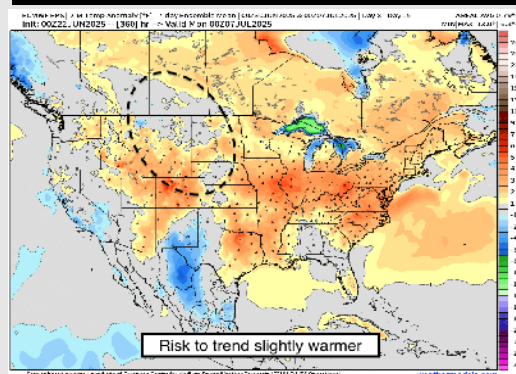
High Temps
Tuesday

Houston Pilots: 6/22/25

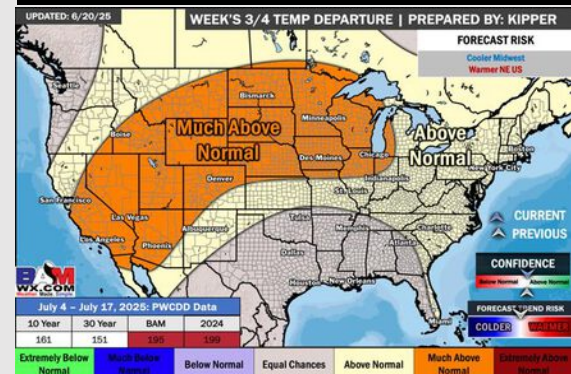
Next 7 Day Temperature Departure



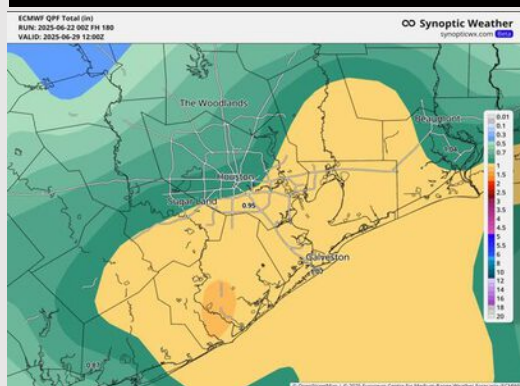
8-14 Day Temperature Departure



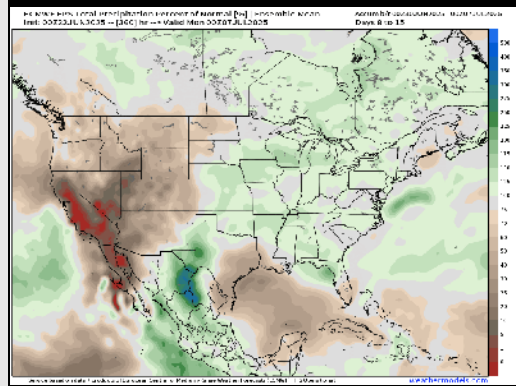
15-30 Day Temperature Departure



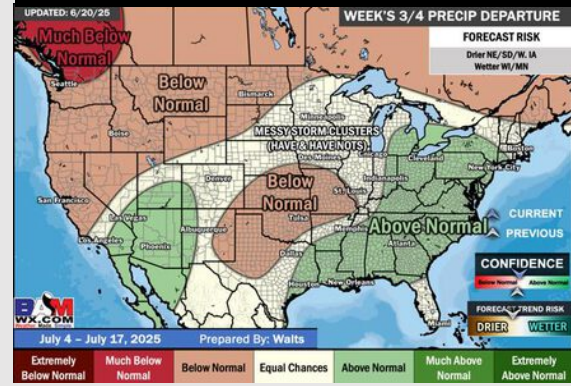
Next 7 Day Total Precipitation



8-14 Day % of Average Precip.



15-30 Day % of Average Precip.



- Temps are expected to be near normal the next 7 days. Scattered rain chances expected through the mid-week with better coverage favored after THU the 26th
- Above normal temps and below normal rainfall is favored for days 8 – 14.
- Near normal temperatures are favored into early July along with slightly above normal rainfall chances.