

# Houston Pilots Forecast Package

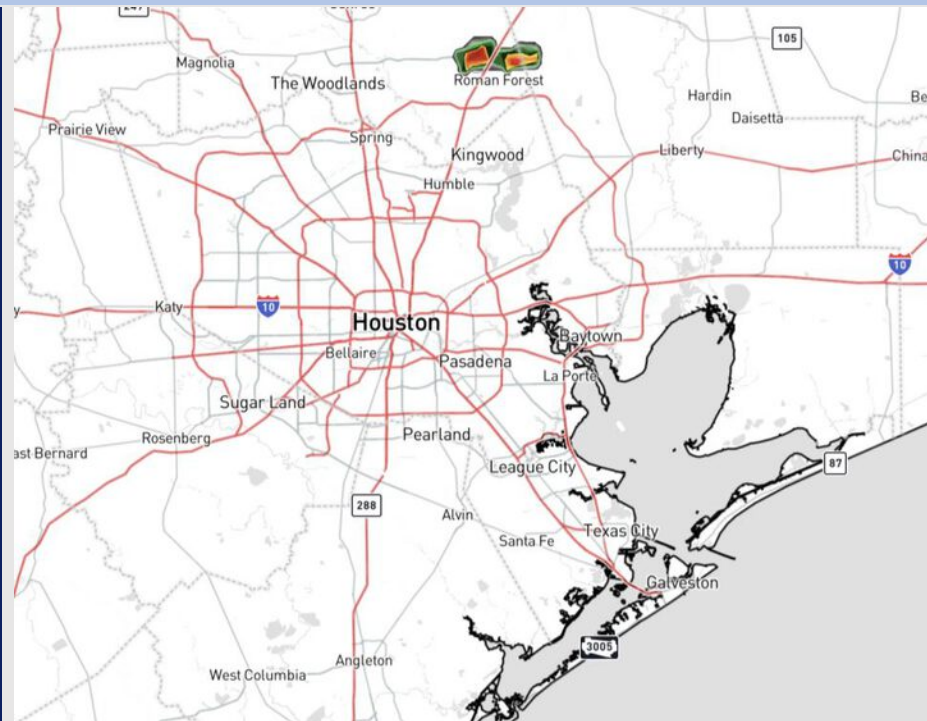


Updated: 1:15 PM CT  
Friday, June 20, 2025

Forecaster: Alyssa Elliott

## Weather Headlines

- Isolated showers and storms will be possible this PM and Saturday.
- Scattered showers and storms are expected from 3PM – 7PM Sunday. **A few storms may contain frequent lightning, hail, and wind gusts of 30 – 40 kts.**
- **Wind gusts out of the SSE of 20 – 25 kts will be possible for all stations S of Morgan's Point Saturday.**
- Waves will be a bit choppy around the Boarding Station at 3 ft through SAT AM



**Current Radar: 1:00 PM CT**

As always, please do not hesitate to reach out to us with any forecast questions at **(317)-560-8122**. **Press 1 for forecast questions.**

**You can also access real-time forecast updates and 24/7 meteorological chat assistance on your [Clarity](#) app. Click [here](#) for login assistance.**



# Houston Pilots Visibility Chart (miles)



Visibility	Fri 2 pm	Fri 3 pm	Fri 4 pm	Fri 5 pm	Fri 6 pm	Fri 7 pm	Fri 8 pm	Fri 9 pm	Fri 10 pm	Fri 11 pm	Sat 12 am	Sat 1 am	Sat 2 am	Sat 3 am	Sat 4 am	Sat 5 am	Sat 6 am	Sat 7 am	Sat 8 am	Sat 9 am	Sat 10 am	Sat 11 am	Sat 12 pm	Sat 1 pm
Houston Pilots N - 610 Bridge	10	10	10	10	10	10	10	10	10	10	10	10	10	10	10	10	10	10	10	10	10	10	10	10
Houston Pilots M - Kinder 1	10	10	10	10	10	10	10	10	10	10	10	10	10	10	10	10	10	10	10	10	10	10	10	10
Houston Pilots L - Greens Bayou	10	10	10	10	10	10	10	10	10	10	10	10	10	10	10	10	10	10	10	10	10	10	10	10
Houston Pilots K - Shell Crude	10	10	10	10	10	10	10	10	10	10	10	10	10	10	10	10	10	10	10	10	10	10	10	10
Houston Pilots J - Lynchburg Ferries	10	10	10	10	10	10	10	10	10	10	10	10	10	10	10	10	10	10	10	10	10	10	10	10
Houston Pilots I - Exxon 3	10	10	10	10	10	10	10	10	10	10	10	10	10	10	10	10	10	10	10	10	10	10	10	10
Houston Pilots H - Morgans Point	10	10	10	10	10	10	10	10	10	10	10	10	10	10	10	10	10	10	10	10	10	10	10	10
Houston Pilots G - 75/76	10	10	10	10	10	10	10	10	10	10	10	10	10	10	10	10	10	10	10	10	10	10	10	10
Houston Pilots F - 63/64	10	10	10	10	10	10	10	10	10	10	10	10	10	10	10	10	10	10	10	10	10	10	10	10
Houston Pilots E - 51/52	10	10	10	10	10	10	10	10	10	10	10	10	10	10	10	10	10	10	10	10	10	10	10	10
Houston Pilots D - 37/38	10	10	10	10	10	10	10	10	10	10	10	10	10	10	10	10	10	10	10	10	10	10	10	10
Houston Pilots C - 25/26	10	10	10	10	10	10	10	10	10	10	10	10	10	10	10	10	10	10	10	10	10	10	10	10
Houston Pilots B - 11/12	10	10	10	10	10	10	10	10	10	10	10	10	10	10	10	10	10	10	10	10	10	10	10	10
Houston Pilots A - 1 & 2 Bravo	10	10	10	10	10	10	10	10	10	10	10	10	10	10	10	10	10	10	10	9	10	10	10	10

**NOTE:** This is automated data that may/may not agree with the official BAM thinking that’s found on the daily slides or special visibility report slides. This data should be used as a guide only

# Houston Pilots Wind Chart



Sustained Wind 10 Knots  
Gusts 15 Knots  
Wind from the SE



Wind	Fri 2 pm	Fri 3 pm	Fri 4 pm	Fri 5 pm	Fri 6 pm	Fri 7 pm	Fri 8 pm	Fri 9 pm	Fri 10 pm	Fri 11 pm	Sat 12 am	Sat 1 am	Sat 2 am	Sat 3 am	Sat 4 am	Sat 5 am	Sat 6 am	Sat 7 am	Sat 8 am	Sat 9 am	Sat 10 am	Sat 11 am	Sat 12 pm	Sat 1 pm
Houston Pilots N - 610 Bridge	8 17 ↗	9 18 ↗	10 20 ↗	10 20 ↗	10 21 ↗	10 21 ↗	10 20 ↗	9 18 ↗	8 17 ↗	8 16 ↗	8 15 ↗	7 14 ↗	6 13 ↗	6 13 ↗	6 12 ↗	6 12 ↗	6 10 ↗	6 12 ↗	5 10 ↗	6 13 ↗	7 13 ↗	8 16 ↗	9 18 ↗	9 20 ↗
Houston Pilots M - Kinder 1	8 17 ↗	9 18 ↗	10 20 ↗	10 20 ↗	10 21 ↗	10 21 ↗	10 20 ↗	9 18 ↗	8 17 ↗	8 16 ↗	8 15 ↗	7 14 ↗	6 13 ↗	6 13 ↗	6 12 ↗	6 12 ↗	6 10 ↗	5 10 ↗	5 10 ↗	6 12 ↗	7 13 ↗	8 16 ↗	9 18 ↗	9 20 ↗
Houston Pilots L - Greens Bayou	9 17 ↗	10 20 ↗	10 20 ↗	10 20 ↗	10 21 ↗	10 20 ↗	10 20 ↗	9 17 ↗	8 16 ↗	8 15 ↗	7 15 ↗	7 13 ↗	6 13 ↗	6 12 ↗	6 12 ↗	6 12 ↗	6 10 ↗	5 10 ↗	5 10 ↗	6 12 ↗	7 13 ↗	8 16 ↗	9 17 ↗	10 20 ↗
Houston Pilots K - Shell Crude	9 18 ↗	10 20 ↗	10 20 ↗	10 20 ↗	10 21 ↗	10 20 ↗	10 20 ↗	9 17 ↗	8 16 ↗	8 15 ↗	7 15 ↗	7 14 ↗	6 13 ↗	6 13 ↗	6 12 ↗	6 12 ↗	6 10 ↗	5 10 ↗	5 10 ↗	6 12 ↗	7 13 ↗	8 16 ↗	9 17 ↗	10 20 ↗
Houston Pilots J - Lynchburg Ferries	9 18 ↗	10 18 ↗	10 20 ↗	10 20 ↗	10 21 ↗	10 20 ↗	10 20 ↗	8 17 ↗	8 16 ↗	8 15 ↗	7 15 ↗	6 13 ↗	6 13 ↗	6 12 ↗	6 12 ↗	6 12 ↗	5 10 ↗	5 10 ↗	5 10 ↗	6 12 ↗	6 13 ↗	8 16 ↗	9 17 ↗	10 18 ↗
Houston Pilots I - Exxon 3	12 18 ↗	13 20 ↗	13 21 ↗	13 21 ↗	14 22 ↗	14 21 ↗	14 21 ↗	13 18 ↗	13 18 ↗	13 17 ↗	12 17 ↗	12 17 ↗	12 16 ↗	10 16 ↗	10 15 ↗	10 15 ↗	9 14 ↗	9 14 ↗	8 14 ↗	9 14 ↗	10 15 ↗	10 16 ↗	12 18 ↗	12 20 ↗
Houston Pilots H - Morgans Point	12 18 ↗	13 20 ↗	13 21 ↗	13 21 ↗	14 22 ↗	14 21 ↗	14 20 ↗	13 18 ↗	13 18 ↗	13 17 ↗	12 17 ↗	12 17 ↗	12 17 ↗	10 16 ↗	10 16 ↗	10 16 ↗	10 15 ↗	9 15 ↗	9 14 ↗	9 15 ↗	10 16 ↗	10 16 ↗	10 18 ↗	12 20 ↗
Houston Pilots G - 75/76	12 20 ↗	13 21 ↗	13 21 ↗	14 22 ↗	14 22 ↗	14 22 ↗	14 21 ↗	14 20 ↗	13 20 ↗	13 18 ↗	13 18 ↗	13 20 ↗	13 20 ↗	13 18 ↗	13 18 ↗	13 17 ↗	12 17 ↗	12 16 ↗	10 16 ↗	10 16 ↗	10 17 ↗	12 17 ↗	12 20 ↗	12 20 ↗
Houston Pilots F - 63/64	12 20 ↗	12 20 ↗	13 21 ↗	13 21 ↗	14 22 ↗	14 21 ↗	14 20 ↗	13 18 ↗	13 18 ↗	13 18 ↗	13 18 ↗	13 20 ↗	13 20 ↗	13 20 ↗	13 18 ↗	13 17 ↗	12 17 ↗	12 16 ↗	10 16 ↗	10 17 ↗	12 17 ↗	12 17 ↗	12 20 ↗	12 20 ↗
Houston Pilots E - 51/52	12 20 ↗	12 20 ↗	13 20 ↗	13 20 ↗	13 21 ↗	13 20 ↗	13 20 ↗	13 18 ↗	13 18 ↗	13 18 ↗	13 20 ↗	13 20 ↗	14 20 ↗	13 20 ↗	13 20 ↗	13 18 ↗	13 17 ↗	13 17 ↗	13 17 ↗	12 17 ↗	12 17 ↗	12 17 ↗	12 20 ↗	13 20 ↗
Houston Pilots D - 37/38	12 18 ↗	12 20 ↗	13 20 ↗	13 20 ↗	13 20 ↗	13 20 ↗	13 18 ↗	13 18 ↗	13 18 ↗	13 18 ↗	13 18 ↗	13 20 ↗	14 20 ↗	13 20 ↗	13 20 ↗	13 18 ↗	13 17 ↗	13 17 ↗	13 17 ↗	12 17 ↗	12 17 ↗	12 17 ↗	13 20 ↗	13 20 ↗
Houston Pilots C - 25/26	12 18 ↗	12 18 ↗	12 18 ↗	12 20 ↗	13 18 ↗	13 18 ↗	13 18 ↗	13 17 ↗	13 18 ↗	13 18 ↗	13 18 ↗	13 18 ↗	13 20 ↗	13 20 ↗	13 18 ↗	13 17 ↗	13 17 ↗	13 17 ↗	12 17 ↗	12 17 ↗	12 17 ↗	12 17 ↗	13 18 ↗	13 20 ↗
Houston Pilots B - 11/12	10 16 ↗	10 16 ↗	10 17 ↗	10 18 ↗	12 17 ↗	12 17 ↗	10 17 ↗	10 17 ↗	10 17 ↗	10 17 ↗	12 17 ↗	12 18 ↗	12 18 ↗	12 18 ↗	12 18 ↗	12 17 ↗	10 17 ↗	10 16 ↗	10 16 ↗	10 16 ↗	10 16 ↗	10 16 ↗	12 18 ↗	12 18 ↗
Houston Pilots A - 1 & 2 Bravo	10 16 ↗	10 16 ↗	10 17 ↗	10 17 ↗	12 17 ↗	12 17 ↗	12 17 ↗	13 17 ↗	13 18 ↗	13 18 ↗	13 20 ↗	14 20 ↗	14 21 ↗	14 20 ↗	14 20 ↗	13 18 ↗	13 18 ↗	13 18 ↗	13 17 ↗	12 17 ↗	12 17 ↗	12 17 ↗	12 17 ↗	12 17 ↗

NOTE: This is automated data that may/may not agree with the official BAM thinking that's found on the daily slides.  
This data should be used as a guide only.

# Houston Pilots: FRI. 6/20/2025

## Forecast Discussion

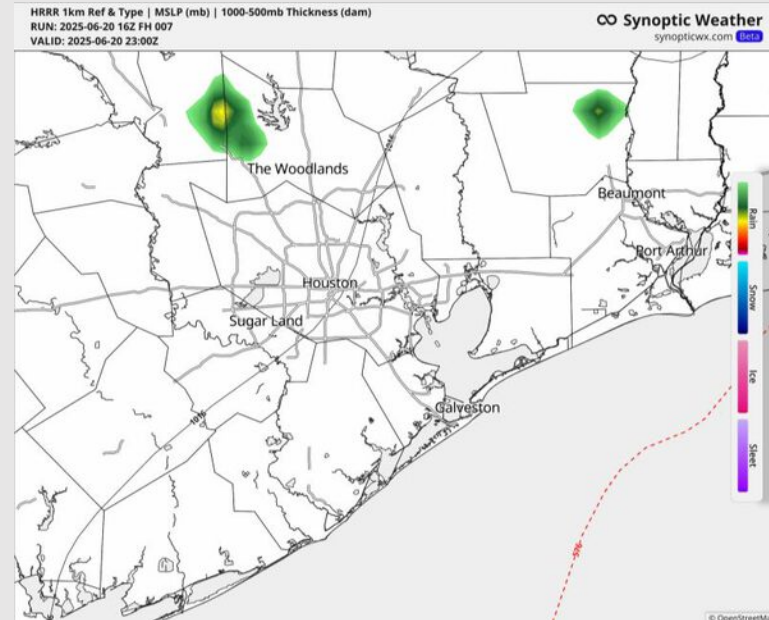
**Precip:** Isolated showers will be possible through 4PM. Then dry conditions favored for the rest of the day.

**Wind:** Winds are from the S/SE this PM. **N of Morgan's Point:** Winds will be at 6 - 11 kts. **S of Morgan's Point:** Winds will be at 13 - 18 kts throughout the PM.

**Low Temps:** **N of Morgan's Point:** Upper 70s F. **S of Morgan's Point:** Low 80s F.

**Visibility:** No visibility concerns today.

## Precip Image: 6 PM CT





# Houston Pilots: SAT. 6/21/2025

## Forecast Discussion

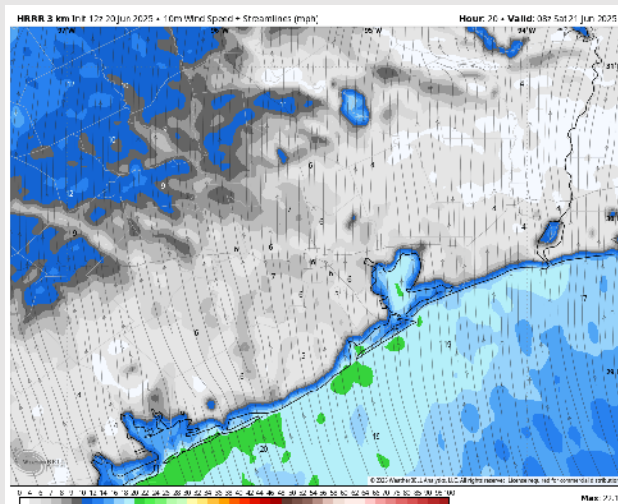
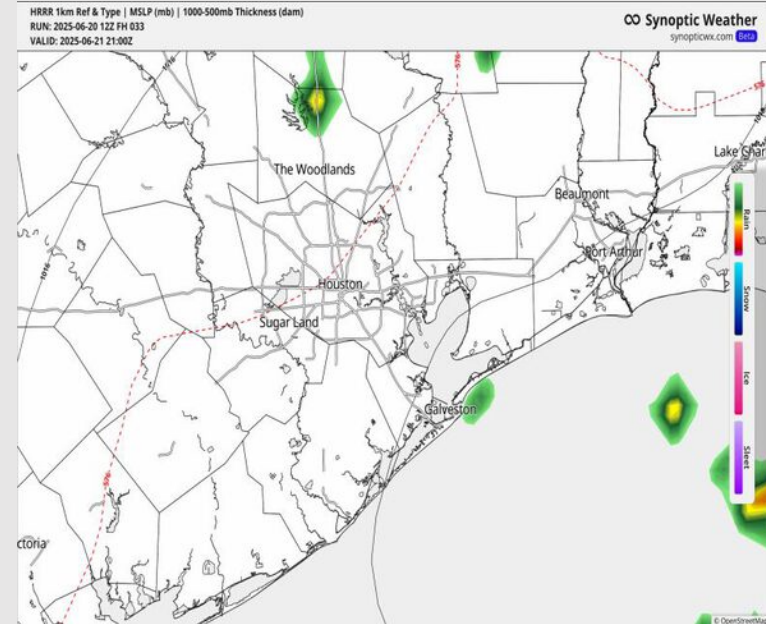
**Precip:** Dry conditions favored outside of isolated showers/storms from 3AM – 7AM and from 12 PM – 8 PM.

**Wind:** Winds will be from the SE Saturday. **N of Morgan's Point:** Winds will be at 6 – 11 kts. **S of Morgan's Point:** Winds will be at 8 – 13 kts. **Wind gusts of 20 – 25 kts will be possible for all stations S of Morgan's Point.**

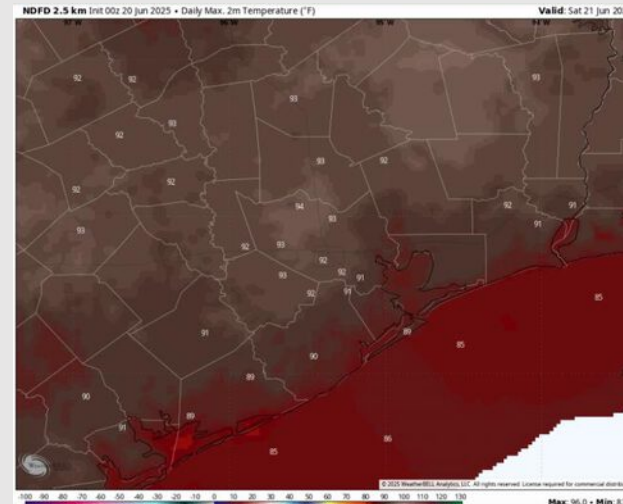
**High Temps:** **N of Morgan's Point:** Low 90s F. **S of Morgan's Point:** Upper 80s F.

**Visibility:** No visibility concerns Saturday.

## Precip Image: 3 AM CT



**Wind Speed:**  
3 AM CT



**High Temps**  
**Saturday**

# Houston Pilots: SUN. 6/22/2025

## Forecast Discussion

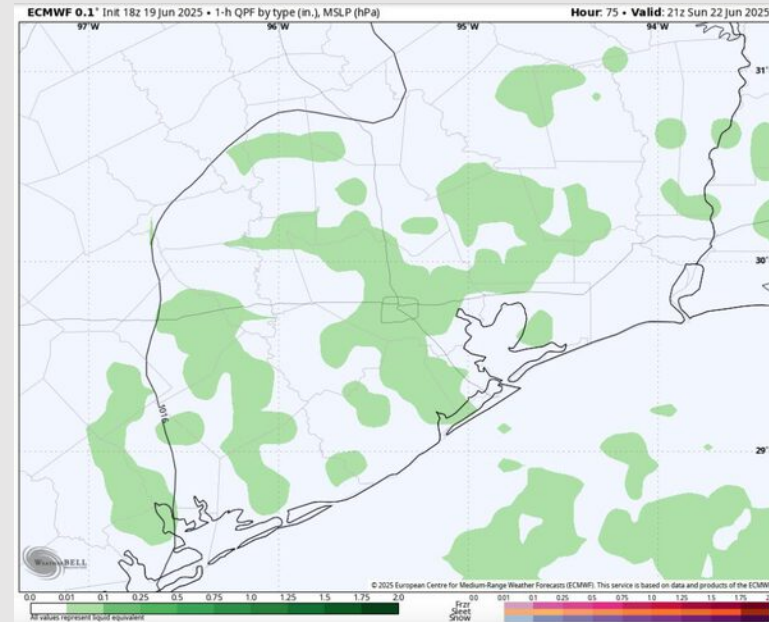
**Precip:** Scattered showers and storms are expected from 3PM – 7PM Sunday. A few storms may contain frequent lightning, hail, and wind gusts of 30 – 40 kts.

**Wind:** Winds will be out of the SE Sunday. **N of Morgan's Point:** Winds will be at 5 – 10 kts. **S of Morgan's Point:** Winds will be 10 – 15 kts.

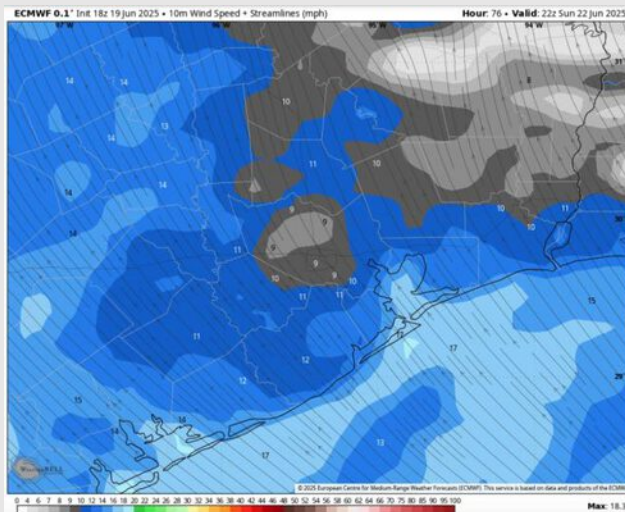
**High Temps:** **N of Morgan's Point:** Low 90s F. **S of Morgan's Point:** High 80s F.

**Visibility:** No fog concerns Sunday, however, a few downpours may limit visibility.

## Precip Image: 4 PM CT



Wind Speed:  
5 PM CT



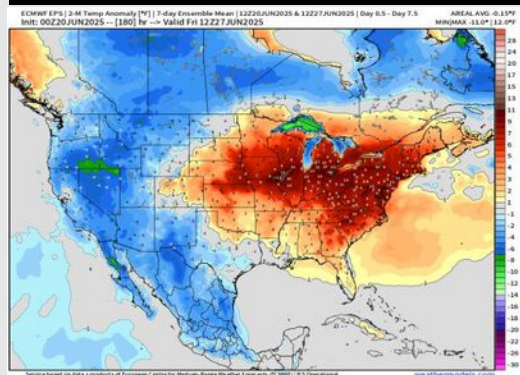
High Temps  
Sunday



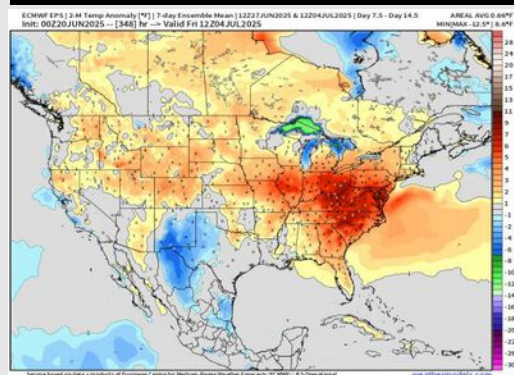


# Houston Pilots: 6/20/25

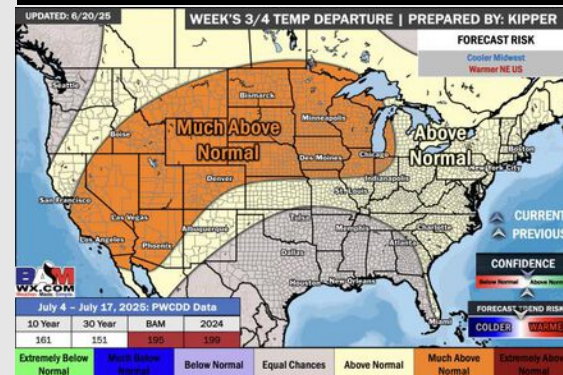
## Next 7 Day Temperature Departure



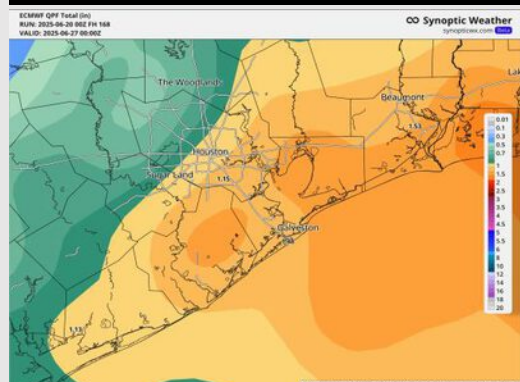
## 8-14 Day Temperature Departure



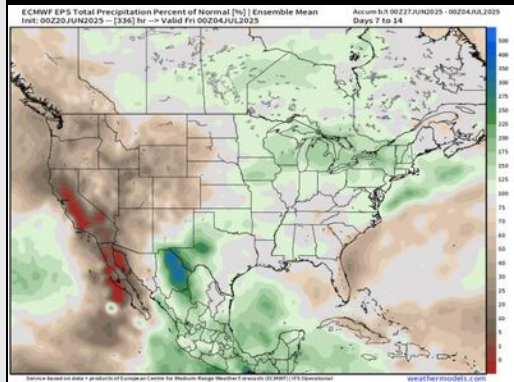
## 15-30 Day Temperature Departure



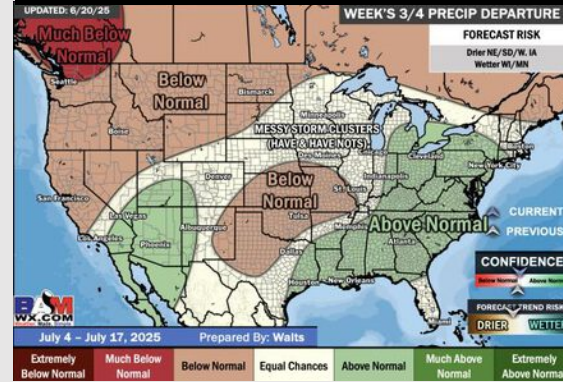
## Next 7 Day Total Precipitation



## 8-14 Day % of Average Precip.



## 15-30 Day % of Average Precip.



- Temps are expected to be near normal the next 7 days. Scattered rain chances expected early to mid next week. Heavy downpours and strong to severe storms will be possible at times.
- Near normal temps and rainfall is favored for days 8 – 14.
- Near normal temperatures are favored into early July along with slightly above normal rainfall chances.