

Houston Pilots Forecast Package

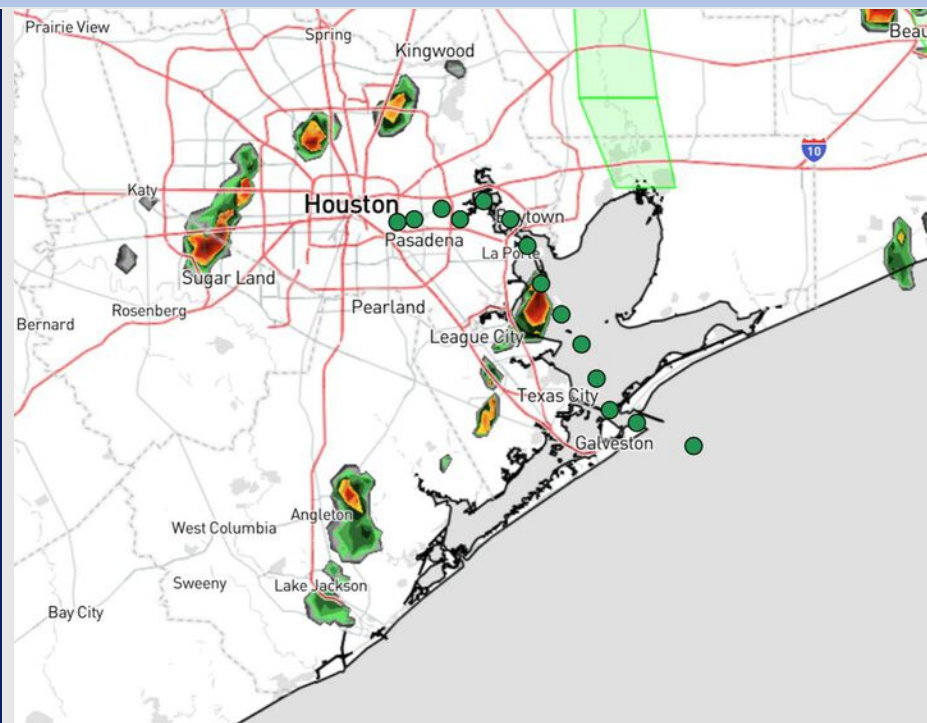


Updated: 1:25 PM CT
Monday, June 16, 2025

Forecaster: Hope Kleitsch

Weather Headlines

- Scattered showers and storms with strong to severe risks expected over the next 72 hours. **Main severe risks will be frequent lightning, large hail, and wind gusts of 30 – 40+ kts.**
- **Non-thunderstorm wind gusts of 20-25 kts will also be in play Tuesday and Wednesday.**



Current Radar: 1:25 PM CT

As always, please do not hesitate to reach out to us with any forecast questions at **(317)-560-8122**. **Press 1 for forecast questions.**

You can also access real-time forecast updates and 24/7 meteorological chat assistance on your **Clarity** app. Click [here](#) for login assistance.



Houston Pilots Visibility Chart (miles)



Visibility	Mon 2 pm	Mon 3 pm	Mon 4 pm	Mon 5 pm	Mon 6 pm	Mon 7 pm	Mon 8 pm	Mon 9 pm	Mon 10 pm	Mon 11 pm	Tue 12 am	Tue 1 am	Tue 2 am	Tue 3 am	Tue 4 am	Tue 5 am	Tue 6 am	Tue 7 am	Tue 8 am	Tue 9 am	Tue 10 am	Tue 11 am	Tue 12 pm	Tue 1 pm
Houston Pilots N - 610 Bridge	10	10	10	10	10	10	10	10	10	10	10	10	10	10	10	10	10	10	9	10	10	10	10	10
Houston Pilots M - Kinder 1	10	10	10	10	10	10	10	10	10	10	10	10	10	10	10	10	10	10	9	10	10	10	10	10
Houston Pilots L - Greens Bayou	10	10	10	10	10	9	10	10	10	10	10	10	10	10	10	10	10	10	9	10	10	10	10	10
Houston Pilots K - Shell Crude	10	10	10	10	10	7.9	10	10	10	10	10	10	10	10	10	10	10	10	9	10	10	10	10	10
Houston Pilots J - Lynchburg Ferries	10	10	10	10	6.9	6.9	10	10	10	10	10	10	10	10	10	10	10	10	9	10	10	10	10	10
Houston Pilots I - Exxon 3	10	10	10	10	10	6.9	10	10	10	10	10	10	10	10	10	10	10	10	9	10	10	10	10	10
Houston Pilots H - Morgans Point	10	10	10	10	10	6.9	10	10	10	10	10	10	10	10	10	10	10	10	9	10	10	10	10	10
Houston Pilots G - 75/76	10	10	10	10	10	10	10	10	10	10	10	10	10	10	10	10	10	10	10	10	10	10	10	10
Houston Pilots F - 63/64	10	10	10	10	10	10	10	10	10	10	10	10	10	10	10	10	10	10	10	10	10	10	10	10
Houston Pilots E - 51/52	10	10	10	10	10	10	10	10	10	10	10	10	10	10	10	10	10	10	10	10	10	10	10	10
Houston Pilots D - 37/38	10	10	10	10	10	10	10	10	10	10	10	10	10	10	10	10	10	10	10	10	10	10	10	10
Houston Pilots C - 25/26	10	10	10	10	10	10	10	10	10	10	10	10	10	10	10	10	10	10	10	10	10	10	10	10
Houston Pilots B - 11/12	10	10	10	10	10	10	10	10	10	10	10	10	10	10	10	10	10	10	10	10	10	10	10	10
Houston Pilots A - 1 & 2 Bravo	10	10	10	10	10	10	10	10	10	10	10	10	10	10	10	10	10	10	10	9	10	10	10	10

NOTE: This is automated data that may/may not agree with the official BAM thinking that's found on the daily slides or special visibility report slides. This data should be used as a guide only

Houston Pilots Wind Chart



Sustained Wind 10 Knots
Gusts 15 Knots
Wind from the SE



Wind	Mon 2 pm	Mon 3 pm	Mon 4 pm	Mon 5 pm	Mon 6 pm	Mon 7 pm	Mon 8 pm	Mon 9 pm	Mon 10 pm	Mon 11 pm	Tue 12 am	Tue 1 am	Tue 2 am	Tue 3 am	Tue 4 am	Tue 5 am	Tue 6 am	Tue 7 am	Tue 8 am	Tue 9 am	Tue 10 am	Tue 11 am	Tue 12 pm	Tue 1 pm
Houston Pilots N - 610 Bridge	7 14 ↗	7 14 ↗	7 13 ↗	6 13 ↗	6 13 ↗	6 13 ↗	6 12 ↗	6 13 ↗	6 13 ↗	6 13 ↗	6 14 ↗	6 13 ↗	6 14 ↗	6 14 ↗	6 13 ↗	6 13 ↗	6 13 ↗	6 13 ↗	6 13 ↗	6 14 ↗	7 15 ↗	8 16 ↗	8 17 ↗	9 18 ↗
Houston Pilots M - Kinder 1	7 15 ↗	7 14 ↗	7 13 ↗	7 13 ↗	7 13 ↗	7 13 ↗	6 12 ↗	6 13 ↗	6 13 ↗	6 13 ↗	6 14 ↗	6 13 ↗	6 14 ↗	6 13 ↗	6 13 ↗	6 13 ↗	6 13 ↗	6 13 ↗	6 13 ↗	6 14 ↗	7 15 ↗	8 16 ↗	9 17 ↗	9 18 ↗
Houston Pilots L - Greens Bayou	7 15 ↗	7 14 ↗	7 13 ↗	7 13 ↗	7 13 ↗	7 13 ↗	6 12 ↗	6 13 ↗	6 13 ↗	6 13 ↗	6 13 ↗	6 13 ↗	6 14 ↗	6 13 ↗	6 13 ↗	6 13 ↗	6 13 ↗	6 13 ↗	6 13 ↗	6 14 ↗	7 15 ↗	8 16 ↗	9 17 ↗	9 18 ↗
Houston Pilots K - Shell Crude	7 15 ↗	7 14 ↗	7 13 ↗	7 13 ↗	7 13 ↗	7 13 ↗	6 12 ↗	6 13 ↗	6 13 ↗	6 13 ↗	6 14 ↗	6 13 ↗	6 14 ↗	6 13 ↗	6 13 ↗	6 13 ↗	6 13 ↗	6 13 ↗	6 13 ↗	6 14 ↗	7 15 ↗	8 16 ↗	9 17 ↗	9 18 ↗
Houston Pilots J - Lynchburg Ferries	7 15 ↗	7 14 ↗	7 13 ↗	7 13 ↗	7 13 ↗	7 13 ↗	6 12 ↗	6 13 ↗	6 12 ↗	6 13 ↗	6 13 ↗	6 13 ↗	6 13 ↗	6 13 ↗	6 13 ↗	6 12 ↗	6 12 ↗	6 12 ↗	6 12 ↗	6 12 ↗	7 15 ↗	8 15 ↗	9 17 ↗	9 18 ↗
Houston Pilots I - Exxon 3	9 16 ↗	9 15 ↗	9 15 ↗	9 15 ↗	9 15 ↗	9 15 ↗	9 14 ↗	9 14 ↗	10 15 ↗	10 16 ↗	10 16 ↗	10 16 ↗	10 16 ↗	10 16 ↗	10 16 ↗	10 15 ↗	10 15 ↗	10 15 ↗	9 15 ↗	10 15 ↗	10 15 ↗	10 16 ↗	10 17 ↗	12 20 ↗
Houston Pilots H - Morgans Point	9 16 ↗	9 15 ↗	9 15 ↗	9 15 ↗	9 15 ↗	9 15 ↗	9 15 ↗	10 14 ↗	10 15 ↗	10 16 ↗	10 16 ↗	10 16 ↗	10 16 ↗	10 16 ↗	10 16 ↗	10 16 ↗	10 16 ↗	10 15 ↗	10 15 ↗	10 15 ↗	10 16 ↗	10 17 ↗	12 17 ↗	12 20 ↗
Houston Pilots G - 75/76	9 17 ↗	9 17 ↗	9 17 ↗	10 16 ↗	10 17 ↗	10 17 ↗	10 16 ↗	10 16 ↗	12 17 ↗	13 18 ↗	13 17 ↗	13 17 ↗	13 17 ↗	13 17 ↗	13 17 ↗	13 18 ↗	13 17 ↗	13 17 ↗	12 17 ↗	12 17 ↗	12 17 ↗	13 18 ↗	13 20 ↗	13 21 ↗
Houston Pilots F - 63/64	10 17 ↗	9 17 ↗	10 17 ↗	10 17 ↗	10 17 ↗	10 17 ↗	10 16 ↗	10 16 ↗	12 17 ↗	13 18 ↗	13 17 ↗	13 17 ↗	13 17 ↗	13 17 ↗	13 17 ↗	13 18 ↗	13 17 ↗	13 17 ↗	13 17 ↗	13 17 ↗	13 18 ↗	13 18 ↗	13 20 ↗	13 21 ↗
Houston Pilots E - 51/52	12 18 ↗	12 18 ↗	10 17 ↗	10 17 ↗	10 17 ↗	10 17 ↗	12 16 ↗	12 16 ↗	12 17 ↗	13 18 ↗	13 17 ↗	13 18 ↗	13 18 ↗	13 18 ↗	13 18 ↗	13 20 ↗	13 18 ↗	13 18 ↗	13 18 ↗	13 18 ↗	13 20 ↗	13 20 ↗	13 21 ↗	14 22 ↗
Houston Pilots D - 37/38	12 18 ↗	12 18 ↗	10 18 ↗	10 18 ↗	10 17 ↗	10 17 ↗	12 16 ↗	12 16 ↗	13 17 ↗	13 18 ↗	13 17 ↗	13 18 ↗	13 18 ↗	13 18 ↗	13 18 ↗	14 20 ↗	14 20 ↗	13 18 ↗	13 18 ↗	13 20 ↗	13 20 ↗	13 21 ↗	14 21 ↗	14 22 ↗
Houston Pilots C - 25/26	12 18 ↗	12 18 ↗	10 18 ↗	10 17 ↗	10 17 ↗	10 17 ↗	12 16 ↗	12 16 ↗	12 17 ↗	13 17 ↗	13 17 ↗	13 18 ↗	13 18 ↗	13 18 ↗	13 18 ↗	13 20 ↗	13 18 ↗	13 18 ↗	13 18 ↗	13 20 ↗	13 20 ↗	14 21 ↗	14 21 ↗	14 22 ↗
Houston Pilots B - 11/12	12 17 ↗	12 17 ↗	10 17 ↗	10 17 ↗	10 16 ↗	10 16 ↗	12 16 ↗	12 16 ↗	12 16 ↗	13 17 ↗	13 17 ↗	12 18 ↗	12 18 ↗	12 18 ↗	12 18 ↗	13 20 ↗	13 18 ↗	13 18 ↗	13 18 ↗	13 20 ↗	13 20 ↗	13 20 ↗	13 20 ↗	13 21 ↗
Houston Pilots A - 1 & 2 Bravo	12 17 ↗	12 17 ↗	10 17 ↗	10 17 ↗	12 17 ↗	12 17 ↗	12 16 ↗	12 16 ↗	13 17 ↗	13 18 ↗	13 18 ↗	14 20 ↗	14 20 ↗	15 21 ↗	15 21 ↗	15 21 ↗	15 21 ↗	15 21 ↗	15 21 ↗	14 21 ↗	14 20 ↗	14 21 ↗	14 20 ↗	13 21 ↗

NOTE: This is automated data that may/may not agree with the official BAM thinking that's found on the daily slides.
This data should be used as a guide only.

Houston Pilots: MON. 6/16/2025

Forecast Discussion

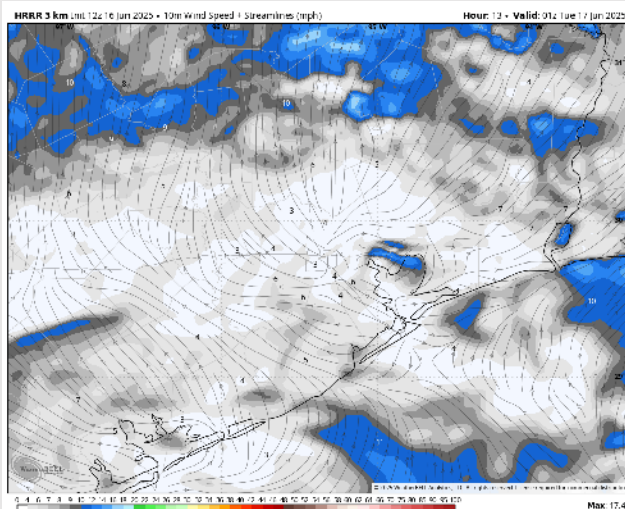
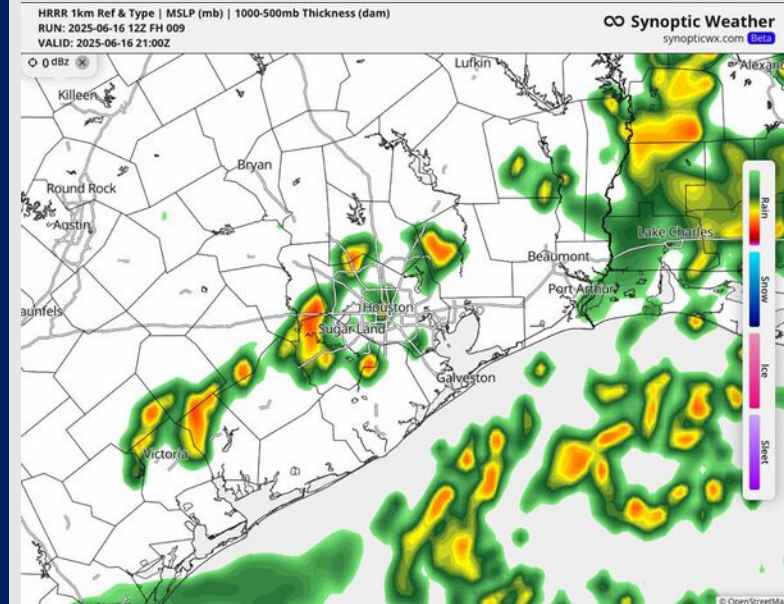
Precip: Scattered showers and storms in play for all Stations through 10PM. A few strong to severe storms will be possible from 3PM to 8PM. **Some storms may have risks for lightning, hail and 35 – 45 kt gusts.**

Wind: Winds will be out of the S/SW. **N of Morgan's Point:** Winds will be at 5 - 10 kts. **S of Morgan's Point:** Winds will be at 6 – 12 kts.

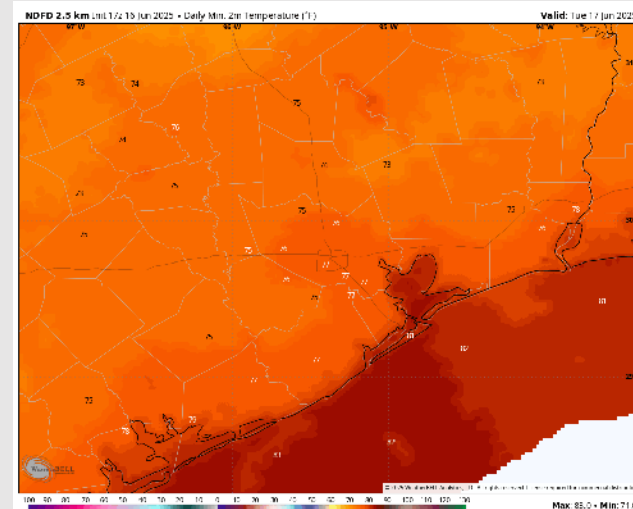
Low Temps: **N of Morgan's Point:** High 70s F. **S of Morgan's Point:** Low 80s F.

Visibility: No fog concerns for the rest of today however visibilities can be reduced below heavy downpours.

Precip Image: 4 PM CT



Wind Speed:
8 PM CT



Low Temps
TUE AM

Houston Pilots: TUE. 6/17/2025

Forecast Discussion

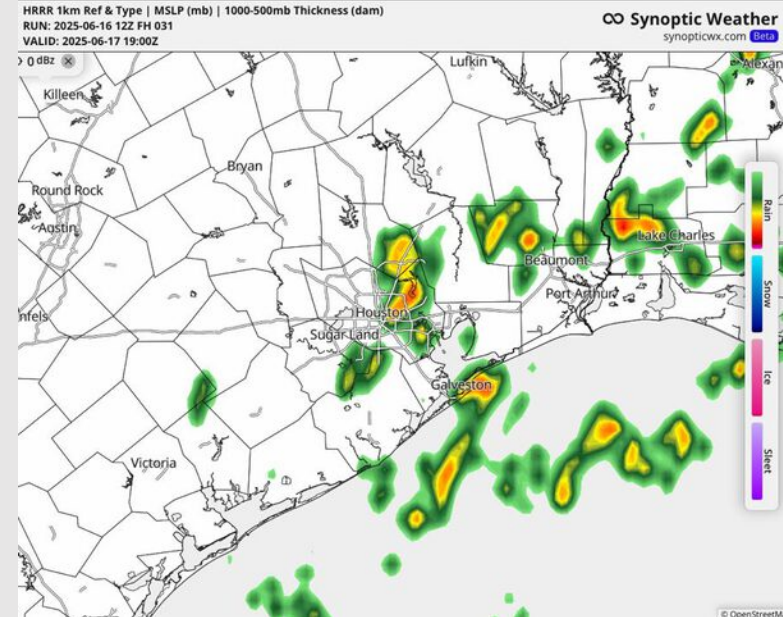
Precip: Scattered showers and storms will be possible for all Stations from 10 AM to 9 PM. **Strong storms with wind gusts of 30 – 40 kts and heavy downpours possible.**

Wind: Winds will be out of the S/SE. **N of Morgan's Point:** Winds will be at 4 – 9 kts. **S of Morgan's Point:** Winds will be at 12 - 17 kts throughout the day. **Non-thunderstorm wind gusts of 20 kts will be in play for all Stations throughout the day.**

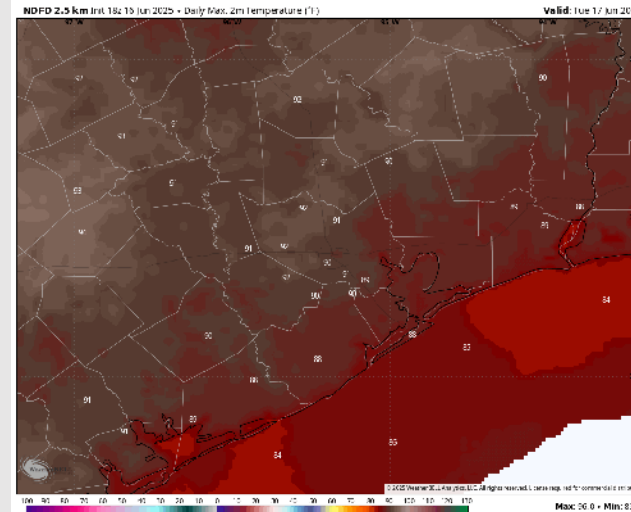
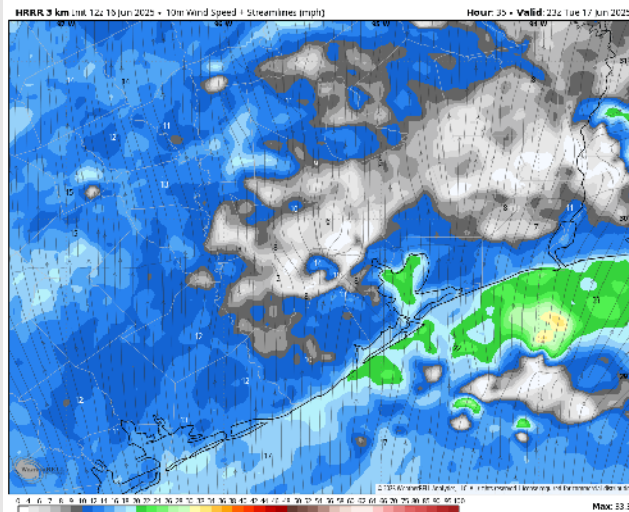
High Temps: **N of Morgan's Point:** Low 90s F. **S of Morgan's Point:** High 80s F.

Visibility: No fog concerns Tuesday however visibility may be reduced under heavier downpours.

Precip Image: 2 PM CT



Wind Speed:
6 PM CT



High Temps
Tuesday

Houston Pilots: WED. 6/18/2025

Forecast Discussion

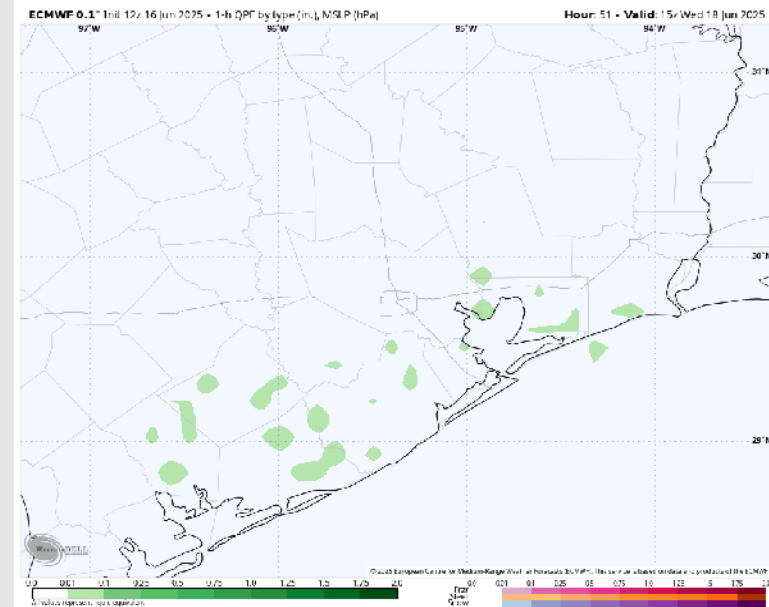
Precip: Hit/miss showers in play for all Stations between 9 AM and 5 PM. Isolated strong storms with wind gusts of 30 – 40 kts and heavy downpours possible.

Wind: Winds will be out of the S/SE throughout the day. **N of Morgan's Point:** Winds will be at 4 – 9 kts. **S of Morgan's Point:** Winds will be at 12 – 17 kts through 12 PM before slightly decreasing to 10 – 15 kts for the rest of the day. **Non-thunderstorm wind gusts of 20-25 kts will be in play for all Stations throughout the day.**

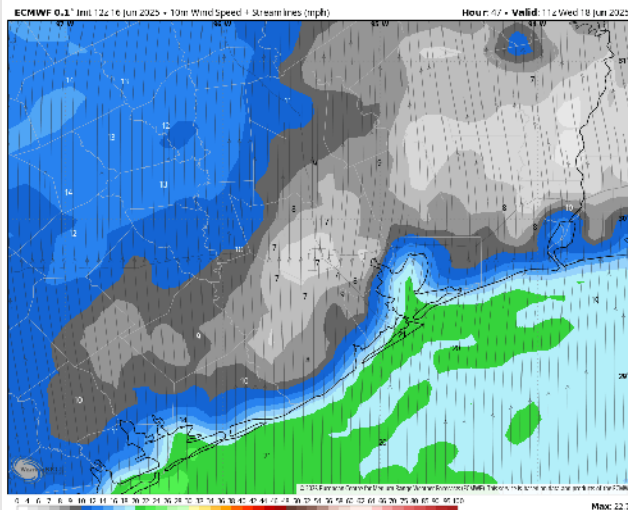
High Temps: **N of Morgan's Point:** Upper 80s to low 90s F. **S of Morgan's Point:** High 80s F.

Visibility: No fog concerns Wednesday however visibilities can be reduced under isolated heavier downpours.

Precip Image: 10 AM CT

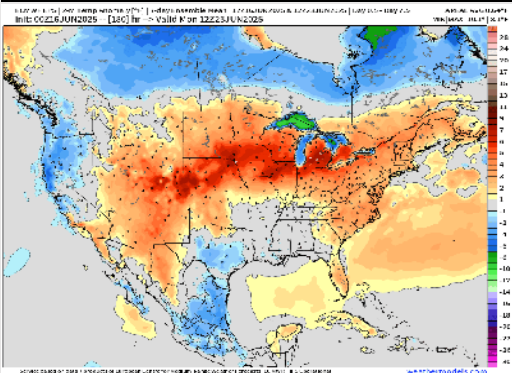


Wind Speed:
6 AM CT

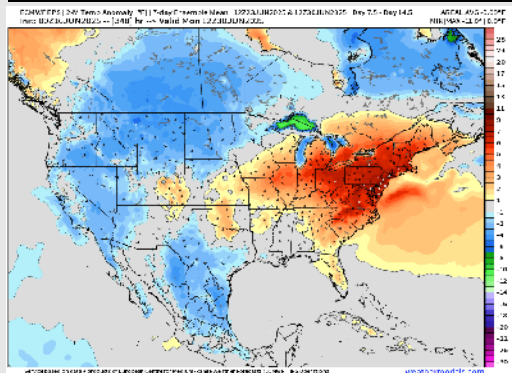


Houston Pilots: 6/16/25

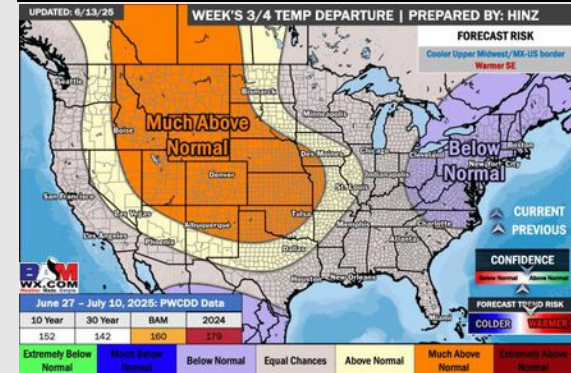
Next 7 Day Temperature Departure



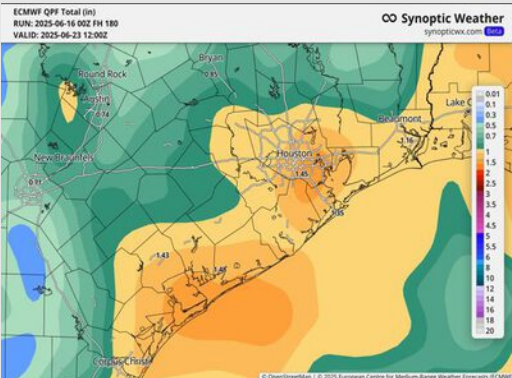
8-14 Day Temperature Departure



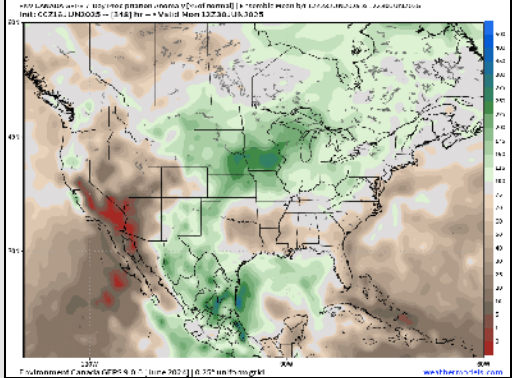
15-30 Day Temperature Departure



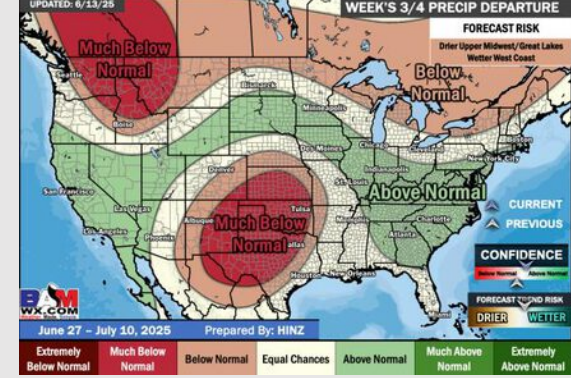
Next 7 Day Total Precipitation



8-14 Day % of Average Precip.



15-30 Day % of Average Precip.



- Temps are expected to be below normal the next 7 days. Scattered rain chances expected, with heavy downpours at times.
- Below normal temps and below normal rainfall is favored for days 8 – 14.
- Near normal temperatures are favored late June into early July along with near normal rainfall chances.