

# Houston Pilots Forecast Package

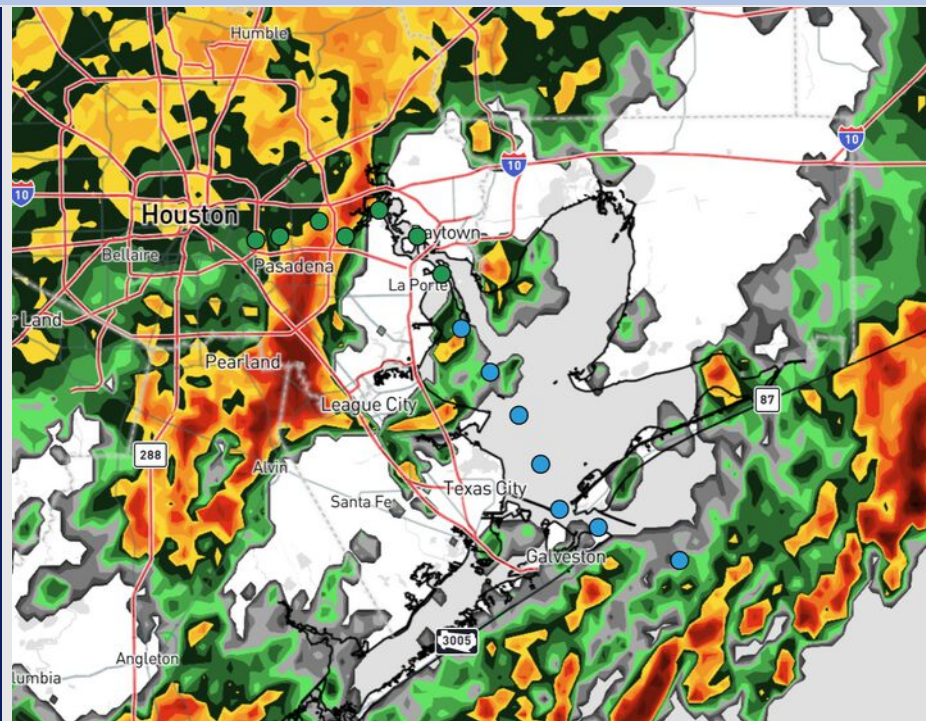


Updated: 9:15 PM CT  
Sunday, June 15, 2025

Forecaster: Tyler Riggles

## Weather Headlines

- Scattered showers and storms with strong to severe risks expected over the next 72 hours. **Main severe risks will be frequent lightning, large hail, and wind gusts of 40-50 kts.**
- **Non-thunderstorm wind gusts of 20-25 kts will also be in play Tuesday and Wednesday.**



Current Radar: 9:13 PM CT

As always, please do not hesitate to reach out to us with any forecast questions at **(317)-560-8122**. **Press 1 for forecast questions.**

You can also access real-time forecast updates and 24/7 meteorological chat assistance on your **Clarity** app. Click **[here](#)** for login assistance.



# Houston Pilots Visibility Chart (miles)



## Forecast Confidence

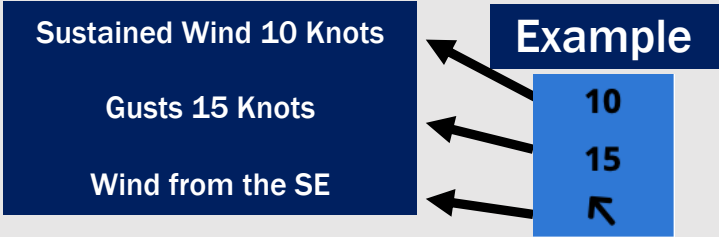
Above  
Normal

Below  
Normal

Visibility	Sun 11 pm	Mon 12 am	Mon 1 am	Mon 2 am	Mon 3 am	Mon 4 am	Mon 5 am	Mon 6 am	Mon 7 am	Mon 8 am	Mon 9 am	Mon 10 am	Mon 11 am	Mon 12 pm	Mon 1 pm	Mon 2 pm	Mon 3 pm	Mon 4 pm	Mon 5 pm	Mon 6 pm	Mon 7 pm	Mon 8 pm	Mon 9 pm	Mon 10 pm
Houston Pilots N - 610 Bridge	10	10	10	10	10	10	10	10	10	6.9	9	10	10	10	10	10	10	10	10	10	10	10	10	10
Houston Pilots M - Kinder 1	10	10	10	10	10	10	10	10	10	6.9	9	10	10	10	10	10	10	10	10	10	10	10	10	10
Houston Pilots L - Greens Bayou	10	10	10	10	10	10	10	10	10	6.9	9	10	10	10	10	10	10	10	10	10	10	10	10	10
Houston Pilots K - Shell Crude	10	10	10	10	10	10	10	10	10	6.9	9	10	10	10	10	10	10	10	10	10	10	10	10	10
Houston Pilots J - Lynchburg Ferries	10	10	10	10	10	10	10	10	10	6.9	9	10	10	10	10	10	10	10	10	10	10	10	10	10
Houston Pilots I - Exxon 3	10	10	10	10	10	10	10	10	10	6.9	10	10	10	10	10	10	10	10	10	10	10	10	10	10
Houston Pilots H - Morgans Point	10	10	10	10	10	10	10	10	10	7.9	10	10	10	10	10	10	10	10	10	10	10	10	10	10
Houston Pilots G - 75/76	10	10	10	10	10	10	10	10	10	10	10	10	10	10	10	10	10	10	10	10	10	10	9	9
Houston Pilots F - 63/64	10	10	10	10	10	10	10	10	10	10	10	10	10	10	10	10	10	10	10	10	10	10	9	9
Houston Pilots E - 51/52	10	10	10	10	10	10	10	10	10	10	10	10	10	10	10	10	10	10	10	10	10	10	9	9
Houston Pilots D - 37/38	9	10	10	10	10	10	10	10	10	10	10	10	10	10	10	10	10	10	10	10	10	10	9	9
Houston Pilots C - 25/26	9	10	10	10	10	10	10	10	10	10	10	10	10	10	10	10	10	10	10	10	10	10	9	9
Houston Pilots B - 11/12	10	10	10	10	10	10	10	10	10	10	10	10	10	10	10	10	10	10	10	10	10	10	9	9
Houston Pilots A - 1 & 2 Bravo	9	10	10	10	10	10	10	10	10	10	10	10	10	10	10	10	10	10	10	9	10	10	9	9

NOTE: This is automated data that may/may not agree with the official BAM thinking that's found on the daily slides or special visibility report slides. This data should be used as a guide only

# Houston Pilots Wind Chart



Wind	Sun 11 pm	Mon 12 am	Mon 1 am	Mon 2 am	Mon 3 am	Mon 4 am	Mon 5 am	Mon 6 am	Mon 7 am	Mon 8 am	Mon 9 am	Mon 10 am	Mon 11 am	Mon 12 pm	Mon 1 pm	Mon 2 pm	Mon 3 pm	Mon 4 pm	Mon 5 pm	Mon 6 pm	Mon 7 pm	Mon 8 pm	Mon 9 pm	Mon 10 pm
Houston Pilots N - 610 Bridge	6 13 ↑	6 12 ↑	6 12 ↑	6 12 ↑	5 10 ↑	5 10 ↑	5 9 ↑	3 9 ↑	3 9 ↑	3 9 ↑	5 9 ↑	6 10 ↑	6 13 ↑	6 13 ↑	7 14 ↑	7 14 ↑	7 15 ↑	7 15 ↑	7 15 ↑	8 15 ↑	8 15 ↑	8 15 ↑	8 15 ↑	7 14 ↑
Houston Pilots M - Kinder 1	6 13 ↑	6 12 ↑	6 12 ↑	6 12 ↑	5 10 ↑	5 10 ↑	5 9 ↑	3 9 ↑	3 9 ↑	3 8 ↑	5 9 ↑	6 10 ↑	6 13 ↑	7 13 ↑	7 14 ↑	7 14 ↑	7 15 ↑	7 15 ↑	7 15 ↑	8 15 ↑	8 15 ↑	8 15 ↑	8 15 ↑	7 14 ↑
Houston Pilots L - Greens Bayou	6 12 ↑	6 12 ↑	6 12 ↑	6 10 ↑	5 10 ↑	5 9 ↑	5 9 ↑	3 9 ↑	3 8 ↑	3 8 ↑	5 9 ↑	5 10 ↑	6 13 ↑	7 13 ↑	7 14 ↑	7 15 ↑	7 15 ↑	7 15 ↑	8 15 ↑	8 15 ↑	8 15 ↑	8 15 ↑	7 15 ↑	7 13 ↑
Houston Pilots K - Shell Crude	6 12 ↑	6 12 ↑	6 12 ↑	6 10 ↑	5 10 ↑	5 10 ↑	5 9 ↑	3 9 ↑	3 8 ↑	3 8 ↑	5 9 ↑	5 9 ↑	6 12 ↑	7 13 ↑	7 14 ↑	7 15 ↑	8 15 ↑	8 15 ↑	8 16 ↑	8 15 ↑	8 15 ↑	8 15 ↑	7 15 ↑	7 14 ↑
Houston Pilots J - Lynchburg Ferries	6 12 ↑	6 12 ↑	6 12 ↑	5 10 ↑	5 10 ↑	3 9 ↑	3 9 ↑	3 8 ↑	3 8 ↑	3 8 ↑	3 9 ↑	5 9 ↑	6 12 ↑	7 13 ↑	7 14 ↑	7 15 ↑	8 15 ↑	8 16 ↑	8 16 ↑	8 15 ↑	8 15 ↑	8 15 ↑	7 15 ↑	7 14 ↑
Houston Pilots I - Exxon 3	10 15 ↑	9 15 ↑	9 15 ↑	9 14 ↑	8 14 ↑	8 13 ↑	8 12 ↑	8 12 ↑	7 12 ↑	7 10 ↑	7 12 ↑	8 12 ↑	8 13 ↑	8 14 ↑	8 15 ↑	8 16 ↑	9 16 ↑	10 17 ↑	10 17 ↑	10 17 ↑	12 17 ↑	12 17 ↑	12 16 ↑	10 16 ↑
Houston Pilots H - Morgans Point	10 15 ↑	10 15 ↑	10 15 ↑	10 15 ↑	9 14 ↑	8 13 ↑	8 13 ↑	8 12 ↑	8 12 ↑	8 12 ↑	8 12 ↑	8 12 ↑	8 13 ↑	8 14 ↑	8 15 ↑	8 16 ↑	9 16 ↑	10 17 ↑	12 17 ↑	12 17 ↑	12 17 ↑	12 17 ↑	12 16 ↑	12 16 ↑
Houston Pilots G - 75/76	10 16 ↑	10 16 ↑	12 16 ↑	12 16 ↑	10 15 ↑	10 15 ↑	10 15 ↑	9 14 ↑	9 14 ↑	9 14 ↑	8 14 ↑	8 14 ↑	8 15 ↑	8 15 ↑	9 16 ↑	10 17 ↑	10 17 ↑	12 17 ↑	12 18 ↑	13 20 ↑	13 20 ↑	13 20 ↑	13 18 ↑	13 18 ↑
Houston Pilots F - 63/64	10 16 ↑	10 16 ↑	12 16 ↑	12 17 ↑	10 15 ↑	10 15 ↑	10 15 ↑	9 14 ↑	9 14 ↑	9 14 ↑	9 14 ↑	9 14 ↑	9 15 ↑	9 15 ↑	9 16 ↑	10 17 ↑	10 17 ↑	12 17 ↑	12 18 ↑	13 18 ↑	13 20 ↑	13 18 ↑	13 18 ↑	13 18 ↑
Houston Pilots E - 51/52	10 16 ↑	12 16 ↑	12 16 ↑	13 17 ↑	12 16 ↑	10 15 ↑	10 15 ↑	10 15 ↑	10 15 ↑	10 15 ↑	10 15 ↑	10 15 ↑	10 15 ↑	10 16 ↑	10 17 ↑	10 17 ↑	12 18 ↑	12 18 ↑	12 18 ↑	13 18 ↑	13 20 ↑	13 18 ↑	13 18 ↑	13 18 ↑
Houston Pilots D - 37/38	10 16 ↑	12 16 ↑	12 16 ↑	13 17 ↑	12 16 ↑	10 15 ↑	10 15 ↑	10 15 ↑	10 15 ↑	10 15 ↑	10 15 ↑	10 15 ↑	10 15 ↑	10 17 ↑	10 17 ↑	10 17 ↑	12 18 ↑	12 18 ↑	12 18 ↑	13 18 ↑	13 18 ↑	13 17 ↑	13 17 ↑	13 17 ↑
Houston Pilots C - 25/26	10 16 ↑	10 16 ↑	12 16 ↑	12 17 ↑	12 16 ↑	10 16 ↑	10 16 ↑	10 15 ↑	10 15 ↑	10 15 ↑	10 15 ↑	10 15 ↑	10 15 ↑	10 16 ↑	10 17 ↑	10 17 ↑	12 17 ↑	12 18 ↑	12 18 ↑	12 18 ↑	13 18 ↑	13 18 ↑	13 17 ↑	12 17 ↑
Houston Pilots B - 11/12	9 15 ↑	10 16 ↑	10 16 ↑	10 17 ↑	10 16 ↑	10 15 ↑	9 16 ↑	9 15 ↑	9 15 ↑	9 15 ↑	9 15 ↑	9 15 ↑	10 15 ↑	10 16 ↑	10 16 ↑	10 17 ↑	10 17 ↑	12 17 ↑	12 17 ↑	10 17 ↑	10 17 ↑	10 17 ↑	10 16 ↑	10 16 ↑
Houston Pilots A - 1 & 2 Bravo	10 16 ↑	12 17 ↑	13 17 ↑	13 18 ↑	13 18 ↑	13 17 ↑	12 17 ↑	12 16 ↑	12 16 ↑	12 16 ↑	10 16 ↑	10 16 ↑	10 15 ↑	10 16 ↑	10 16 ↑	10 16 ↑	10 17 ↑	12 17 ↑	12 17 ↑	12 17 ↑	12 17 ↑	12 17 ↑	13 17 ↑	13 18 ↑

**NOTE:** This is automated data that may/may not agree with the official BAM thinking that's found on the daily slides.  
This data should be used as a guide only.

# Houston Pilots: MON. 6/16/2025

## Forecast Discussion

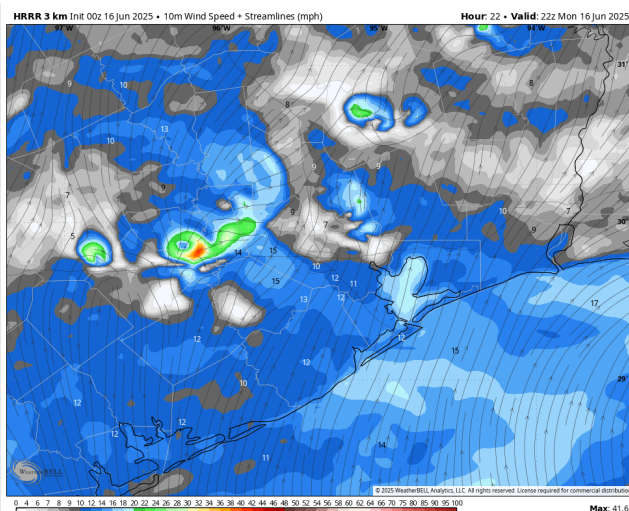
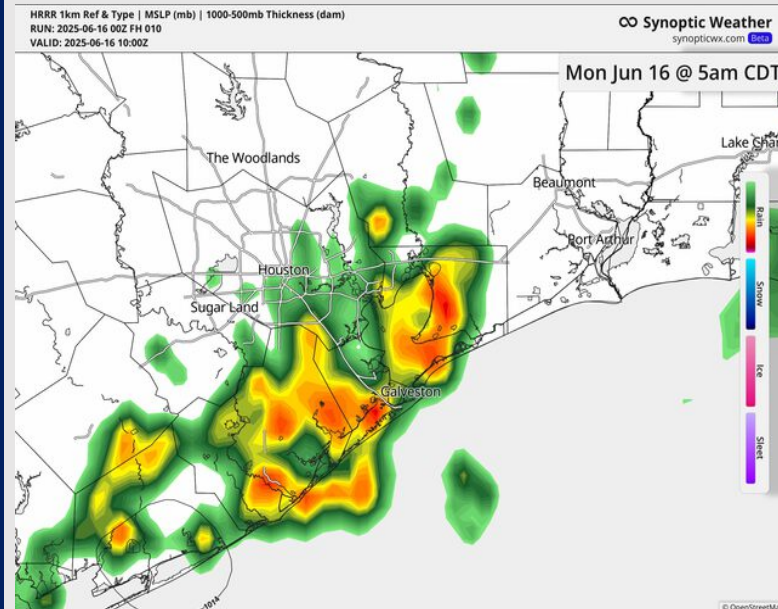
**Precip:** Scattered showers and storms in play for all Stations between through 3 PM. **Some storms will be able to become severe with risks for lightning, hail and 35 – 45 kt gusts.**

**Wind:** Winds will be out of the S/SW. **N of Morgan's Point:** Winds will be at 3 – 8 kts. **S of Morgan's Point:** Winds will be at 5 – 10 kts, increasing to 10 – 15 kts after 5PM.

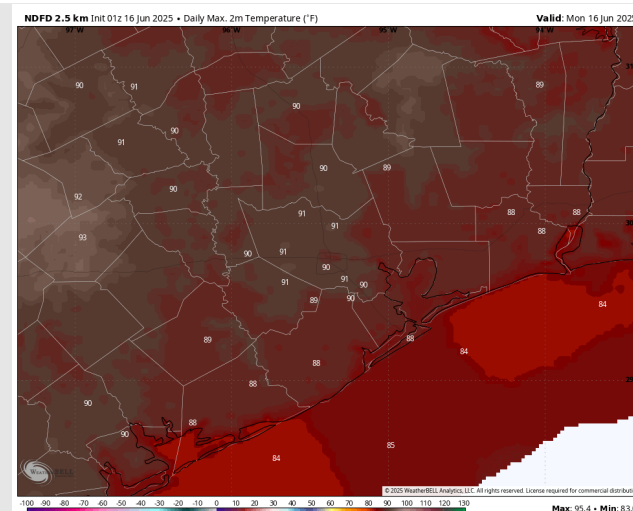
**High Temps:** **N of Morgan's Point:** Near 90 F. **S of Morgan's Point:** High 80s F.

**Visibility:** No fog concerns for today however visibilities can be reduced below heavy downpours.

## Precip Image: 5 AM CT



**Wind Speed:**  
**5 PM CT**



**High Temps**  
**Today**



# Houston Pilots: TUE. 6/17/2025

## Forecast Discussion

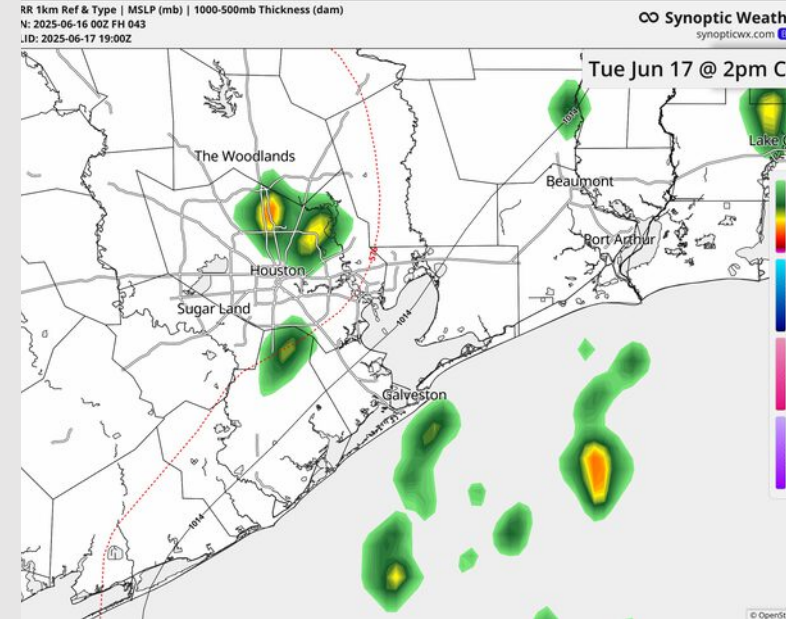
**Precip:** Scattered showers and storms will be possible for all Stations from 7 AM to 3 PM. **Strong storms with wind gusts of 30 – 40 kts and heavy downpours possible.**

**Wind:** Winds will be out of the S/SE. **N of Morgan's Point:** Winds will be at 4 – 9 kts. **S of Morgan's Point:** Winds will be at 12 - 17 kts throughout the day. **Non-thunderstorm wind gusts of 20 kts will be in play for all Stations throughout the day.**

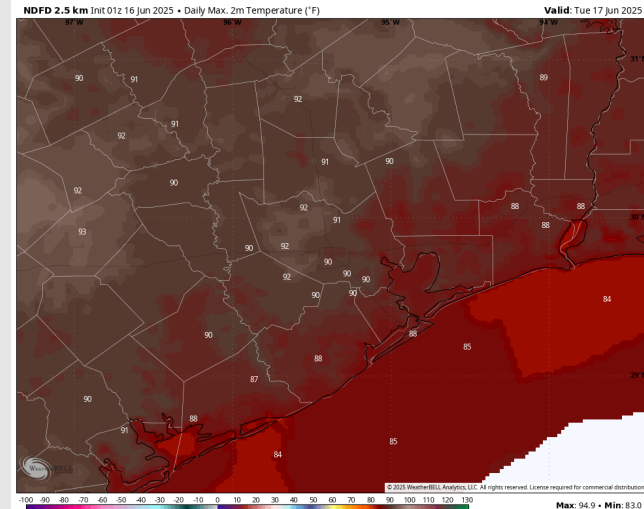
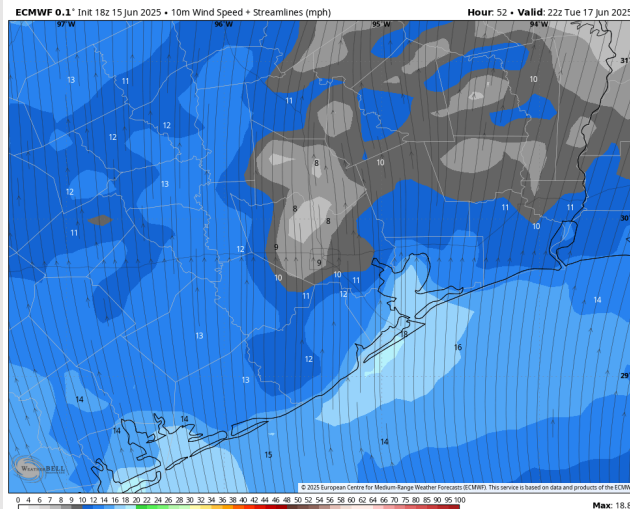
**High Temps:** **N of Morgan's Point:** Low 90s F. **S of Morgan's Point:** High 80s F.

**Visibility:** No fog concerns Tuesday however visibility may be reduced under heavier downpours.

## Precip Image: 2 PM CT



Wind Speed:  
5 PM CT



High Temps  
Tuesday

# Houston Pilots: WED. 6/18/2025

## Forecast Discussion

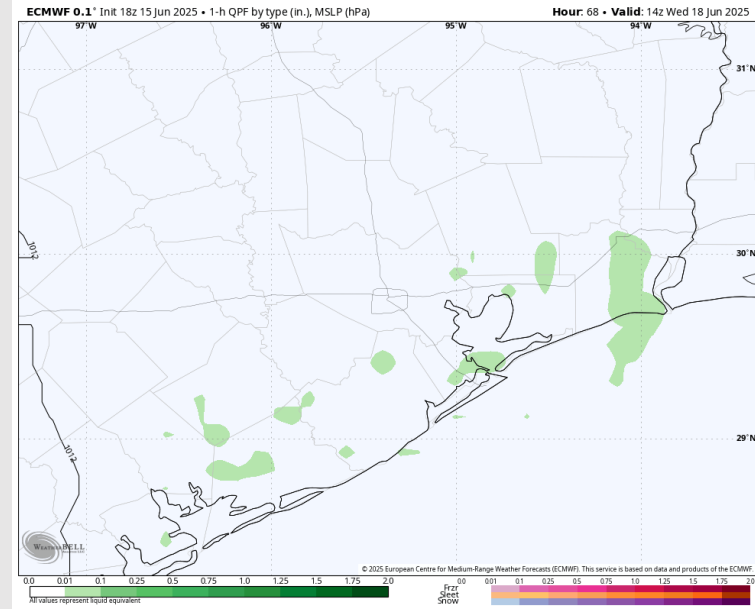
**Precip:** Hit/miss showers in play for all Stations between 6 AM and 5 PM. Isolated strong storms with wind gusts of 30 – 40 kts and heavy downpours possible.

**Wind:** Winds will be out of the S/SE throughout the day. **N of Morgan's Point:** Winds will be at 4 – 9 kts. **S of Morgan's Point:** Winds will be at 12 – 17 kts through 10 AM before slightly decreasing to 10 – 15 kts for the rest of the day. Non-thunderstorm wind gusts of 20-25 kts will be in play for all Stations throughout the day.

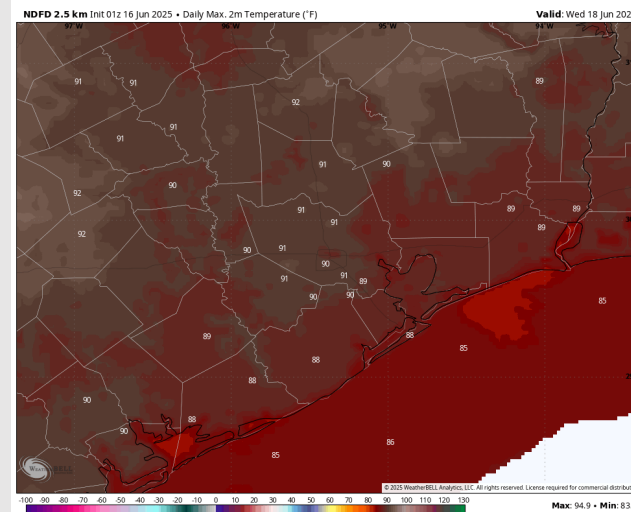
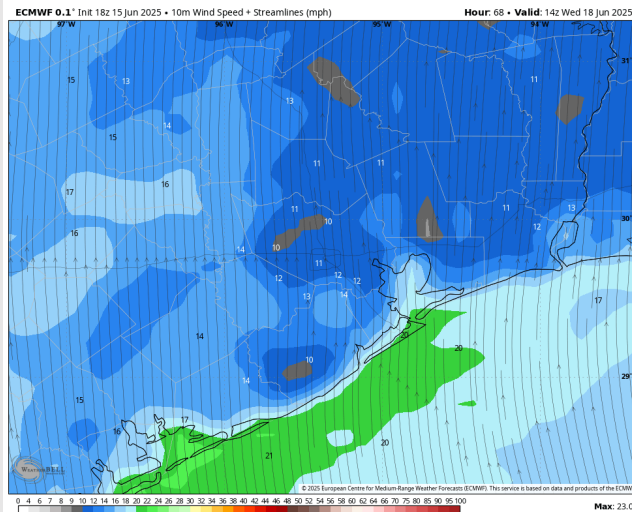
**High Temps:** **N of Morgan's Point:** Low 90s F. **S of Morgan's Point:** High 80s F.

**Visibility:** No fog concerns Wednesday however visibilities can be reduced under isolated heavier downpours.

## Precip Image: 9 AM CT



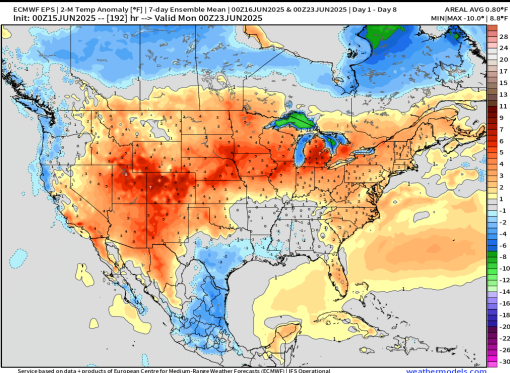
**Wind Speed:**  
9 AM CT



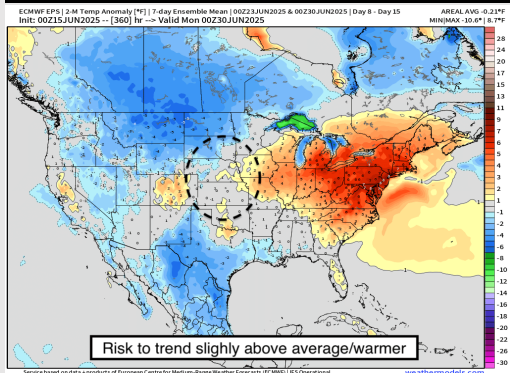
**High Temps**  
**Wednesday**

# Houston Pilots: 6/16/25

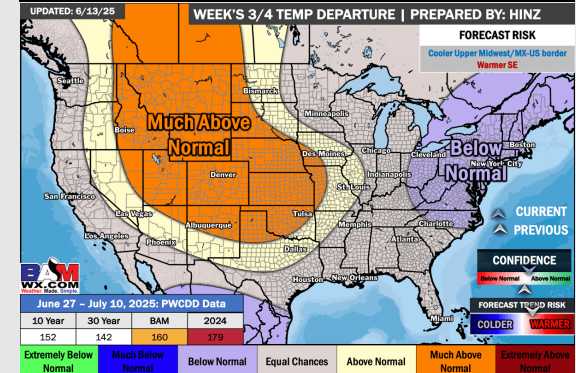
## Next 7 Day Temperature Departure



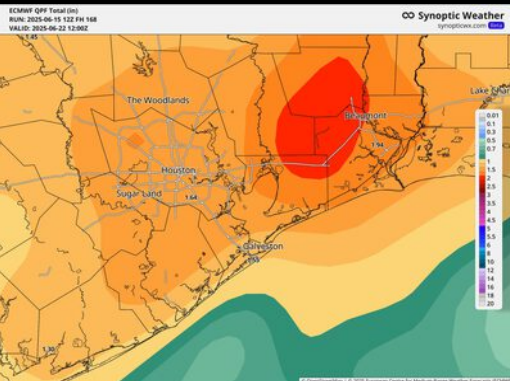
## 8-14 Day Temperature Departure



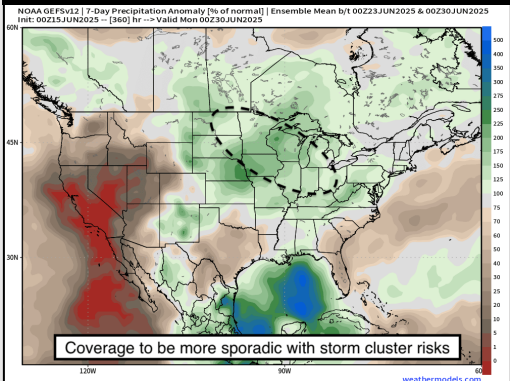
## 15-30 Day Temperature Departure



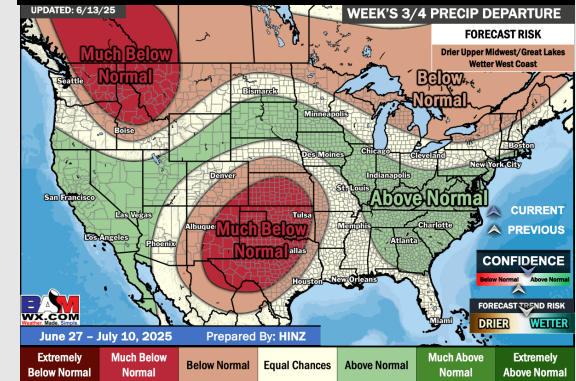
## Next 7 Day Total Precipitation



## 8-14 Day % of Average Precip.



## 15-30 Day % of Average Precip.



- Temps are expected to be below normal the next 7 days. Scattered rain chances expected, with heavy downpours at times.
- Below normal temps and below normal rainfall is favored for days 8 – 14.
- Near normal temperatures are favored late June into early July along with near normal rainfall chances.