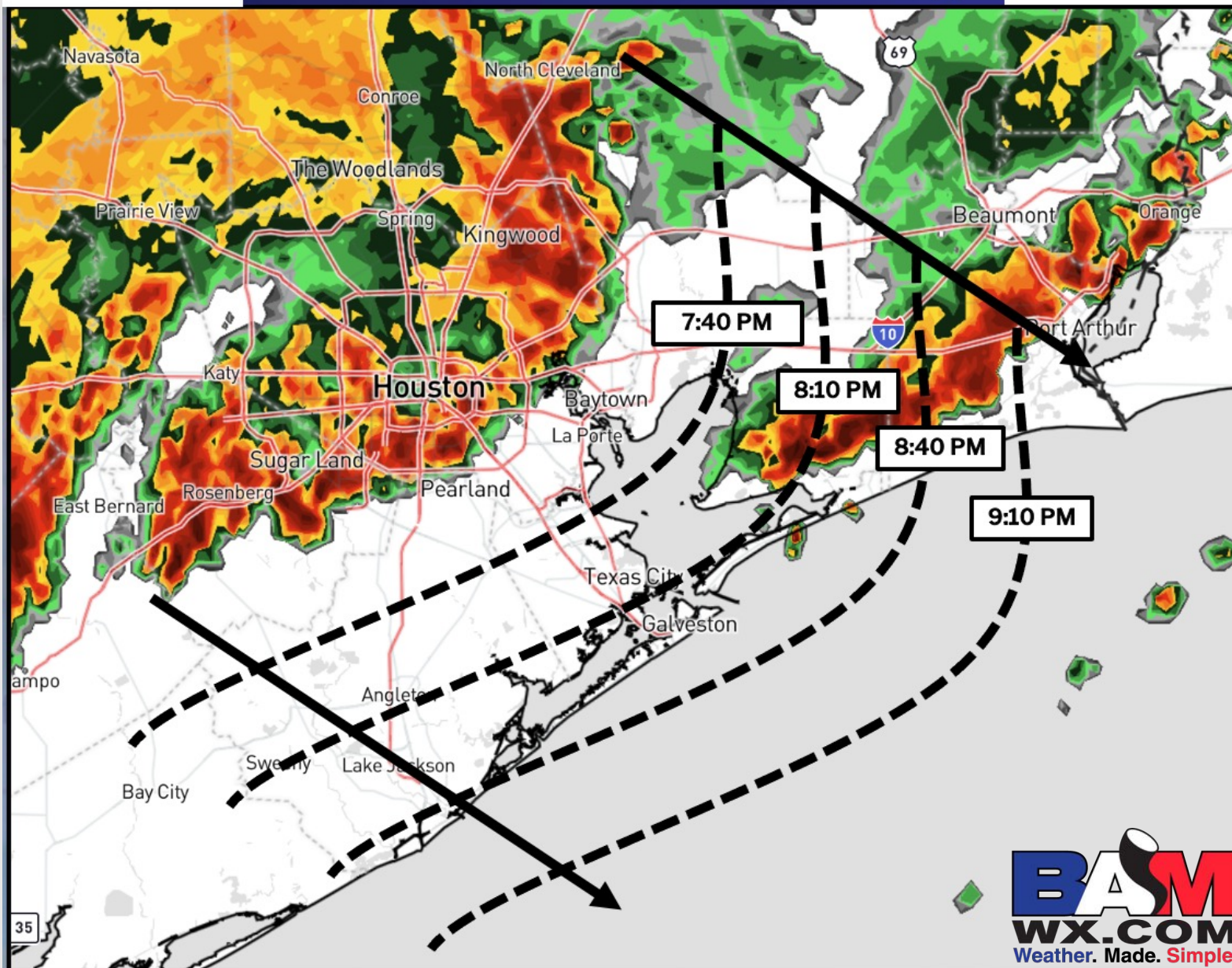




ETA of Strong Storms/Heavy Rain

Current: 7:10 PM CT 6/15/25

Forecaster: Riggles



Houston Pilots Forecast Package

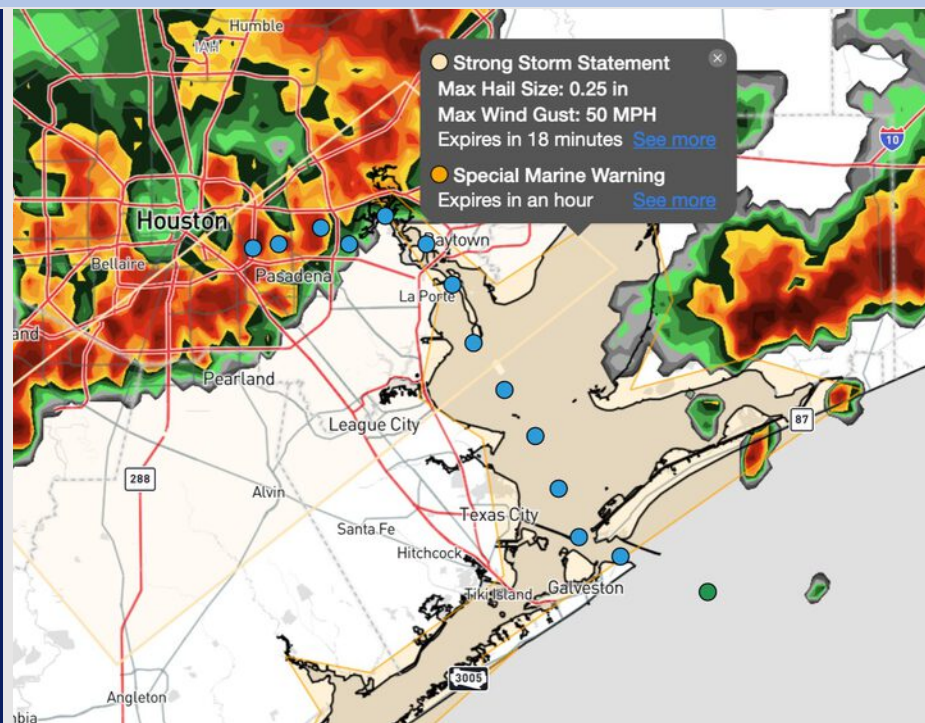


Updated: 7:10 PM CT
Sunday, June 15, 2025

Forecaster: Tyler Riggles

Weather Headlines

- Scattered showers and storms with strong to severe risks expected over the next 72 hours. **Some storms can potentially become severe with frequent lightning, large hail, and wind gusts of 40-50 kts possible as the main hazards.**
- **A low-end risk of non-sea fog will be possible MON AM for Stations N. of Morgan's Point.**



Current Radar: 7:10 PM CT

As always, please do not hesitate to reach out to us with any forecast questions at (317)-560-8122. **Press 1 for forecast questions.**

You can also access real-time forecast updates and 24/7 meteorological chat assistance on your [Clarity](#) app. Click [here](#) for login assistance.



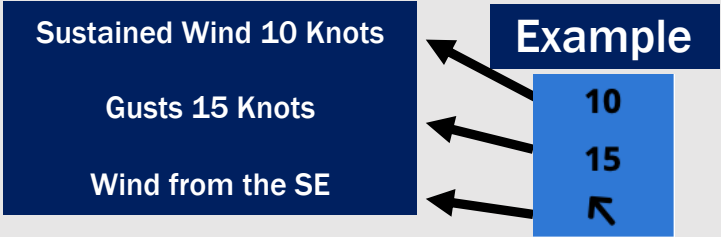
Houston Pilots Visibility Chart (miles)



Visibility	Sun 1 pm	Sun 2 pm	Sun 3 pm	Sun 4 pm	Sun 5 pm	Sun 6 pm	Sun 7 pm	Sun 8 pm	Sun 9 pm	Sun 10 pm	Sun 11 pm	Mon 12 am	Mon 1 am	Mon 2 am	Mon 3 am	Mon 4 am	Mon 5 am	Mon 6 am	Mon 7 am	Mon 8 am	Mon 9 am	Mon 10 am	Mon 11 am	Mon 12 pm
Houston Pilots N - 610 Bridge	10	10	10	10	10	10	10	10	10	10	10	10	10	10	10	10	10	10	10	9	9	10	10	10
Houston Pilots M - Kinder 1	10	10	10	10	10	10	10	10	10	10	10	10	10	10	10	10	10	10	10	9	9	10	10	10
Houston Pilots L - Greens Bayou	10	10	10	10	10	10	10	10	10	10	10	10	10	10	10	10	10	10	10	9	9	10	10	10
Houston Pilots K - Shell Crude	10	10	10	10	10	10	10	10	10	10	10	10	10	10	10	10	10	10	10	9	9	10	10	10
Houston Pilots J - Lynchburg Ferries	10	10	10	10	10	7.9	10	10	10	10	10	10	10	10	10	10	10	10	10	9	9	10	10	10
Houston Pilots I - Exxon 3	10	10	10	10	10	7.9	10	10	10	10	10	10	10	10	10	10	10	10	10	9	9	10	10	10
Houston Pilots H - Morgans Point	10	10	10	10	10	10	10	10	10	10	10	10	10	10	10	10	10	10	10	9	9	10	10	10
Houston Pilots G - 75/76	10	10	10	10	10	10	10	10	10	10	10	10	10	10	10	10	10	10	10	9	10	10	10	9
Houston Pilots F - 63/64	10	10	10	10	10	10	10	10	10	10	10	10	10	10	10	10	10	10	10	9	10	10	10	9
Houston Pilots E - 51/52	10	10	10	10	10	10	10	10	10	10	10	10	10	10	10	10	10	10	10	10	10	10	10	9
Houston Pilots D - 37/38	10	10	10	10	10	10	10	10	10	10	10	10	10	10	10	10	10	10	10	10	10	10	10	9
Houston Pilots C - 25/26	10	10	10	10	10	10	10	10	10	10	10	10	10	10	10	10	10	10	10	10	10	10	10	9
Houston Pilots B - 11/12	10	10	10	10	10	10	10	10	10	10	10	10	10	10	10	10	10	10	10	10	10	10	10	9
Houston Pilots A - 1 & 2 Bravo	10	10	10	10	10	10	10	10	10	10	10	10	10	10	10	10	10	10	10	10	9	10	10	8

NOTE: This is automated data that may/may not agree with the official BAM thinking that’s found on the daily slides or special visibility report slides. This data should be used as a guide only

Houston Pilots Wind Chart



Wind	Sun 1 pm	Sun 2 pm	Sun 3 pm	Sun 4 pm	Sun 5 pm	Sun 6 pm	Sun 7 pm	Sun 8 pm	Sun 9 pm	Sun 10 pm	Sun 11 pm	Mon 12 am	Mon 1 am	Mon 2 am	Mon 3 am	Mon 4 am	Mon 5 am	Mon 6 am	Mon 7 am	Mon 8 am	Mon 9 am	Mon 10 am	Mon 11 am	Mon 12 pm
Houston Pilots N - 610 Bridge	7 13 ↑	7 14 ↑	7 15 ↑	8 15 ↑	8 15 ↑	8 15 ↑	8 15 ↑	8 13 ↑	7 14 ↑	6 13 ↑	6 13 ↑	6 13 ↑	6 13 ↑	6 13 ↑	6 12 ↑	5 10 ↑	5 10 ↑	3 9 ↑	3 8 ↑	3 8 ↑	5 9 ↑	6 10 ↑	6 13 ↑	7 13 ↑
Houston Pilots M - Kinder 1	7 13 ↑	8 15 ↑	8 15 ↑	8 15 ↑	8 15 ↑	8 15 ↑	8 15 ↑	8 14 ↑	7 14 ↑	6 13 ↑	6 13 ↑	6 13 ↑	6 13 ↑	6 12 ↑	6 12 ↑	5 10 ↑	5 9 ↑	3 9 ↑	3 8 ↑	3 8 ↑	5 9 ↑	6 10 ↑	6 13 ↑	7 13 ↑
Houston Pilots L - Greens Bayou	7 14 ↑	8 15 ↑	8 15 ↑	8 15 ↑	8 15 ↑	8 16 ↑	8 15 ↑	7 13 ↑	7 13 ↑	6 13 ↑	6 13 ↑	6 12 ↑	6 12 ↑	6 12 ↑	5 10 ↑	5 10 ↑	5 9 ↑	3 9 ↑	3 8 ↑	3 8 ↑	5 9 ↑	5 10 ↑	6 13 ↑	7 13 ↑
Houston Pilots K - Shell Crude	8 14 ↑	8 15 ↑	8 15 ↑	8 15 ↑	8 15 ↑	8 16 ↑	8 15 ↑	8 13 ↑	7 13 ↑	6 13 ↑	6 13 ↑	6 13 ↑	6 12 ↑	6 12 ↑	5 10 ↑	5 10 ↑	5 9 ↑	3 9 ↑	3 8 ↑	3 8 ↑	5 9 ↑	5 10 ↑	6 13 ↑	7 13 ↑
Houston Pilots J - Lynchburg Ferries	8 14 ↑	8 15 ↑	8 15 ↑	8 16 ↑	8 16 ↑	8 16 ↑	8 16 ↑	8 14 ↑	7 14 ↑	6 13 ↑	6 13 ↑	6 12 ↑	6 12 ↑	6 12 ↑	5 10 ↑	5 9 ↑	3 9 ↑	3 8 ↑	3 8 ↑	3 8 ↑	5 9 ↑	5 10 ↑	6 12 ↑	7 13 ↑
Houston Pilots I - Exxon 3	9 15 ↑	9 16 ↑	10 17 ↑	10 17 ↑	10 17 ↑	10 17 ↑	10 17 ↑	10 16 ↑	10 16 ↑	10 15 ↑	10 15 ↑	10 15 ↑	10 15 ↑	10 15 ↑	9 14 ↑	8 13 ↑	8 13 ↑	8 12 ↑	7 10 ↑	7 10 ↑	7 10 ↑	8 12 ↑	8 14 ↑	8 13 ↑
Houston Pilots H - Morgans Point	9 15 ↑	10 16 ↑	10 17 ↑	10 17 ↑	10 17 ↑	10 17 ↑	10 17 ↑	10 16 ↑	10 16 ↑	10 15 ↑	10 15 ↑	10 15 ↑	10 15 ↑	10 15 ↑	9 14 ↑	8 14 ↑	8 13 ↑	8 12 ↑	7 10 ↑	7 10 ↑	7 10 ↑	8 12 ↑	8 14 ↑	8 14 ↑
Houston Pilots G - 75/76	10 16 ↑	10 17 ↑	10 18 ↑	10 18 ↑	12 18 ↑	12 17 ↑	12 17 ↑	12 17 ↑	12 17 ↑	12 16 ↑	12 16 ↑	12 16 ↑	12 16 ↑	12 17 ↑	10 15 ↑	10 15 ↑	10 15 ↑	9 14 ↑	8 14 ↑	8 13 ↑	8 14 ↑	8 13 ↑	9 15 ↑	9 15 ↑
Houston Pilots F - 63/64	10 16 ↑	10 17 ↑	10 17 ↑	10 18 ↑	10 18 ↑	12 17 ↑	12 17 ↑	12 17 ↑	12 16 ↑	10 16 ↑	10 16 ↑	12 16 ↑	12 16 ↑	12 17 ↑	12 16 ↑	10 15 ↑	10 15 ↑	9 15 ↑	9 14 ↑	9 14 ↑	8 14 ↑	8 14 ↑	9 15 ↑	9 15 ↑
Houston Pilots E - 51/52	10 17 ↑	10 17 ↑	10 17 ↑	10 17 ↑	10 17 ↑	10 17 ↑	10 17 ↑	12 16 ↑	10 16 ↑	10 16 ↑	10 16 ↑	12 16 ↑	12 16 ↑	13 17 ↑	12 16 ↑	10 15 ↑	10 16 ↑	10 15 ↑	10 15 ↑	9 14 ↑	9 15 ↑	10 15 ↑	10 15 ↑	10 16 ↑
Houston Pilots D - 37/38	10 17 ↑	10 17 ↑	10 17 ↑	10 17 ↑	10 17 ↑	10 17 ↑	10 17 ↑	10 16 ↑	10 16 ↑	10 16 ↑	10 16 ↑	12 16 ↑	12 16 ↑	13 17 ↑	12 16 ↑	12 16 ↑	10 16 ↑	10 15 ↑	10 15 ↑	10 15 ↑	10 15 ↑	10 15 ↑	10 15 ↑	10 17 ↑
Houston Pilots C - 25/26	10 16 ↑	10 17 ↑	10 17 ↑	10 16 ↑	10 16 ↑	10 16 ↑	10 16 ↑	10 15 ↑	10 16 ↑	10 16 ↑	10 16 ↑	10 16 ↑	12 16 ↑	13 16 ↑	12 16 ↑	10 16 ↑	10 16 ↑	10 15 ↑	10 15 ↑	10 15 ↑	10 15 ↑	10 15 ↑	10 15 ↑	10 17 ↑
Houston Pilots B - 11/12	10 16 ↑	10 16 ↑	9 15 ↑	9 15 ↑	10 15 ↑	10 16 ↑	10 15 ↑	10 14 ↑	9 15 ↑	9 15 ↑	9 15 ↑	10 16 ↑	10 16 ↑	10 16 ↑	10 16 ↑	10 16 ↑	10 16 ↑	9 15 ↑	9 15 ↑	9 15 ↑	9 15 ↑	9 15 ↑	10 15 ↑	10 16 ↑
Houston Pilots A - 1 & 2 Bravo	10 15 ↑	9 15 ↑	9 15 ↑	9 15 ↑	9 15 ↑	10 15 ↑	10 15 ↑	10 15 ↑	10 16 ↑	10 16 ↑	10 16 ↑	12 16 ↑	12 17 ↑	13 18 ↑	13 18 ↑	13 17 ↑	13 17 ↑	12 16 ↑	12 16 ↑	10 16 ↑	10 16 ↑	10 16 ↑	10 16 ↑	10 16 ↑

NOTE: This is automated data that may/may not agree with the official BAM thinking that's found on the daily slides.
This data should be used as a guide only.

Houston Pilots: SUN. 6/15/2025

Forecast Discussion

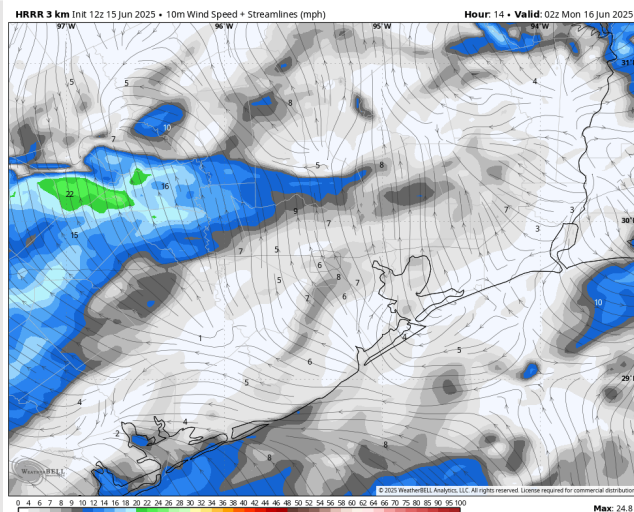
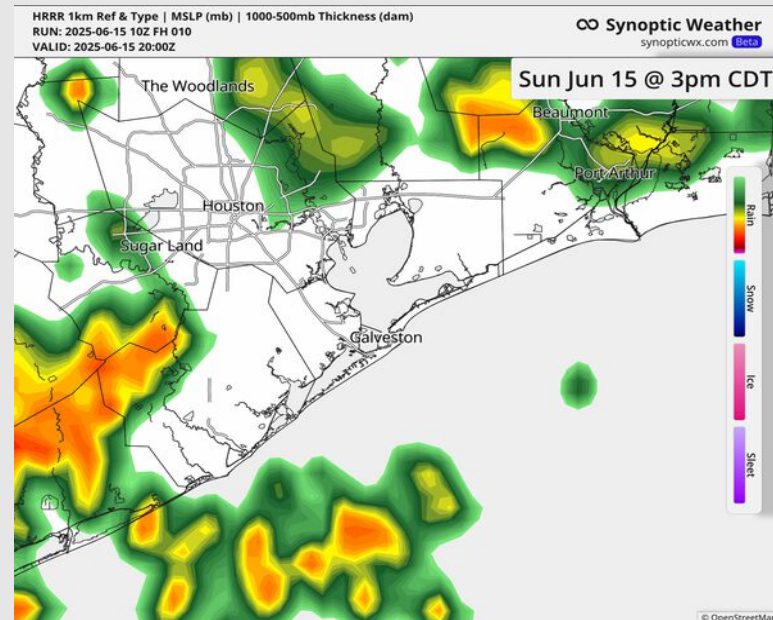
Precip: Scattered showers and storms will be possible through 3 PM. After 3PM, activity is expected to become more isolated in nature through 10 PM as the more widespread activity stays to the North of Stations. **Some storms will be able to become severe with risks for lightning, hail and 35 – 50 kt gusts.**

Wind: Winds will be out of the S/SE, becoming variable after 5PM. **N of Morgan's Point:** Winds will be at 3 – 8 kts for the rest of the day. **S of Morgan's Point:** Winds will be at 5 – 10 kts the remainder of the day.

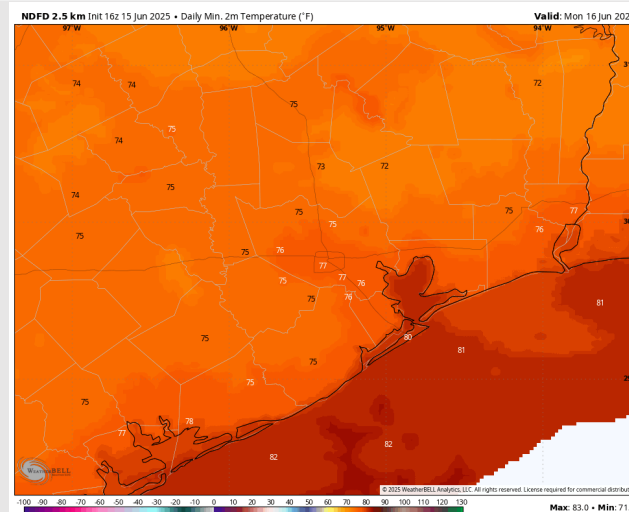
Low Temps: **N of Morgan's Point:** Mid 70s F. **S of Morgan's Point:** Near 80 F.

Visibility: No fog concerns today however visibilities can be reduced under heavier downpours.

Precip Image: 3 PM CT



Wind Speed:
9 PM CT



Low Temps
MON AM

Houston Pilots: MON. 6/16/2025

Forecast Discussion

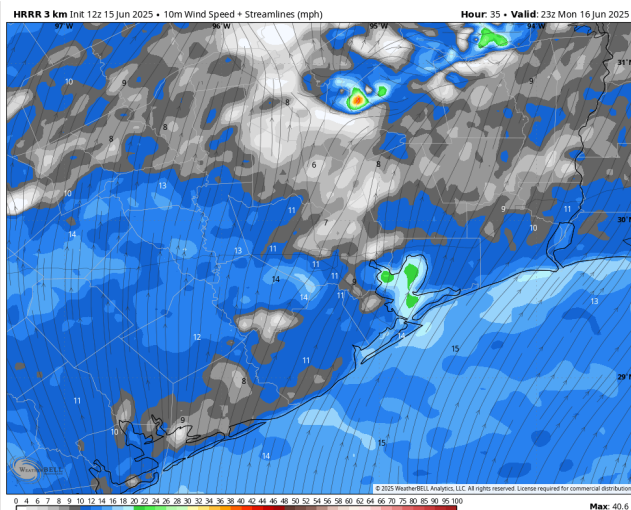
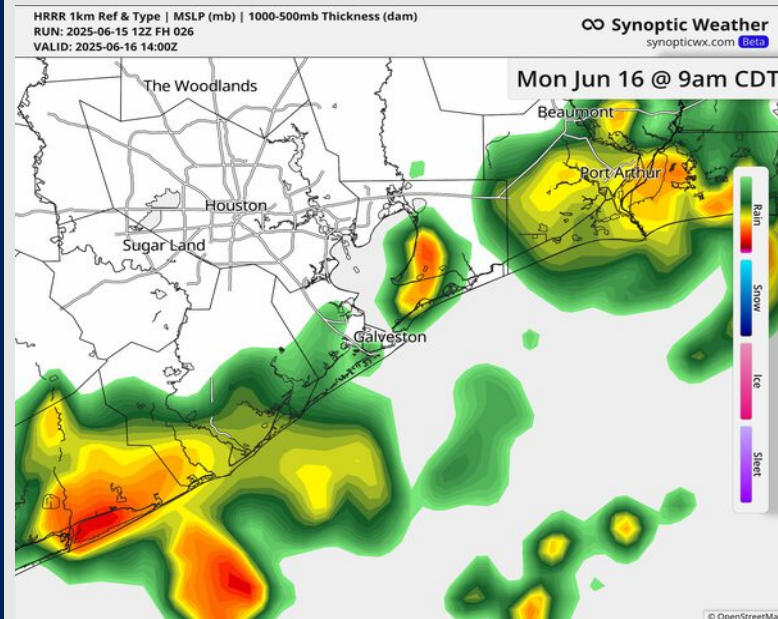
Precip: Scattered showers and storms in play for all Stations between 3 AM and 3 PM. **Some storms will be able to become severe with risks for lightning, hail and 35 – 45 kt gusts.**

Wind: Winds will be out of the S/SW. **N of Morgan's Point:** Winds will be at 3 - 8 kts. **S of Morgan's Point:** Winds will be at 5 – 10 kts, increasing to 10 – 15 kts after 5PM.

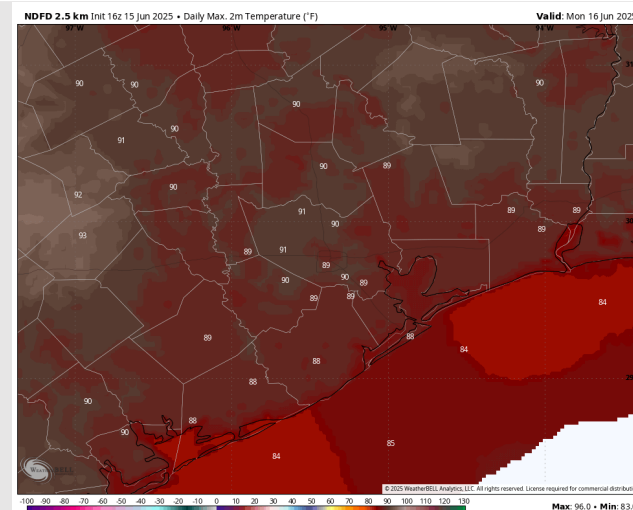
High Temps: **N of Morgan's Point:** Near 90 F. **S of Morgan's Point:** High 80s F.

Visibility: Monitoring a low-end non-sea fog risk for Stations N of Morgan's Point prior to 3 AM. Visibilities can also be reduced below heavy downpours.

Precip Image: 9 AM CT



Wind Speed:
5 PM CT



High Temps
Monday

Houston Pilots: TUE. 6/17/2025

Forecast Discussion

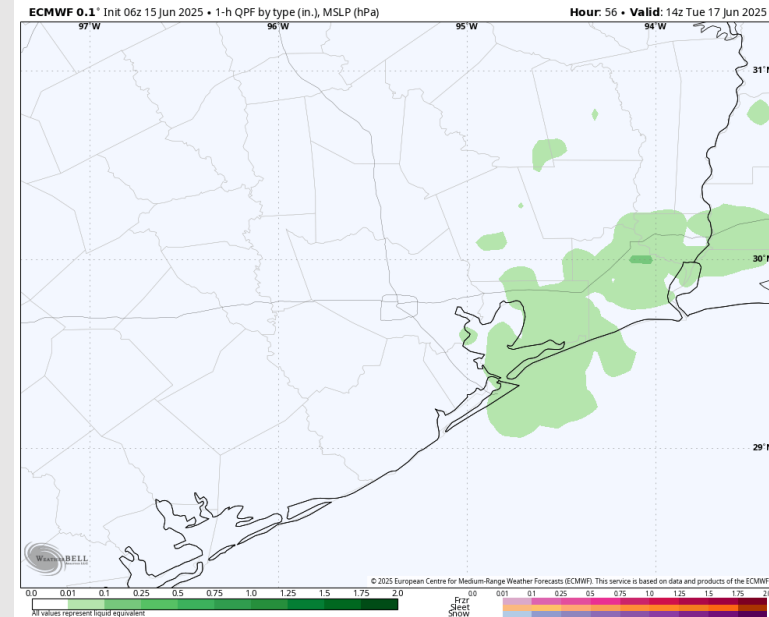
Precip: Scattered showers and storms will be possible for all Stations from 4 AM to 2 PM. **Strong storms with wind gusts of 30 – 40 kts and heavy downpours possible.**

Wind: Winds will be out of the S/SE. **N of Morgan's Point:** Winds will be at 4 – 9 kts. **S of Morgan's Point:** Winds will be at 12 - 17 kts throughout the day. **Non-thunderstorm wind gusts of 20 kts will be in play for all Stations throughout the day.**

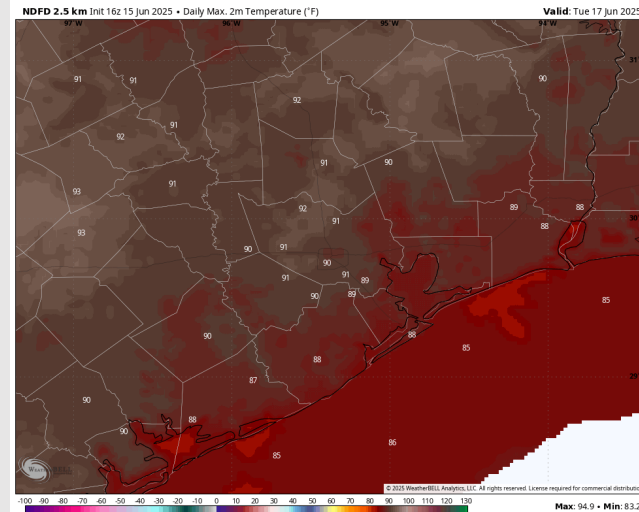
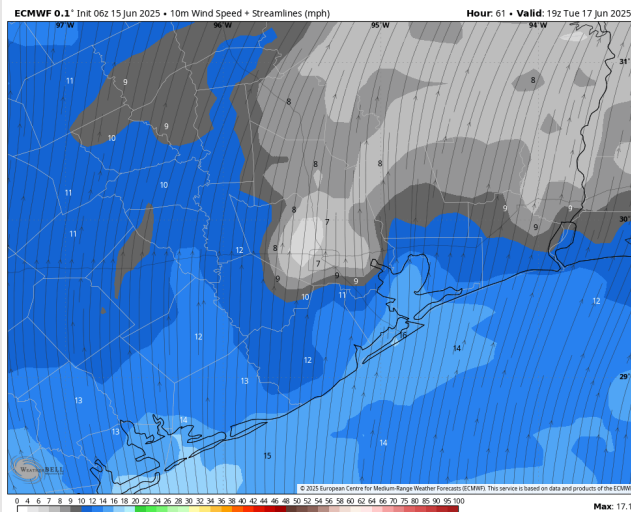
High Temps: **N of Morgan's Point:** Low 90s F. **S of Morgan's Point:** High 80s F.

Visibility: No fog concerns Tuesday however visibility may be reduced under heavier downpours.

Precip Image: 9 AM CT



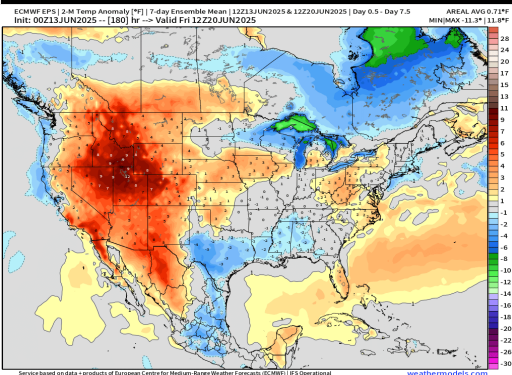
Wind Speed:
2 PM CT



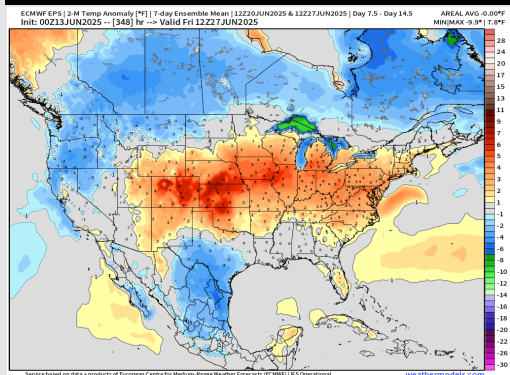
High Temps
Tuesday

Houston Pilots: 6/15/25

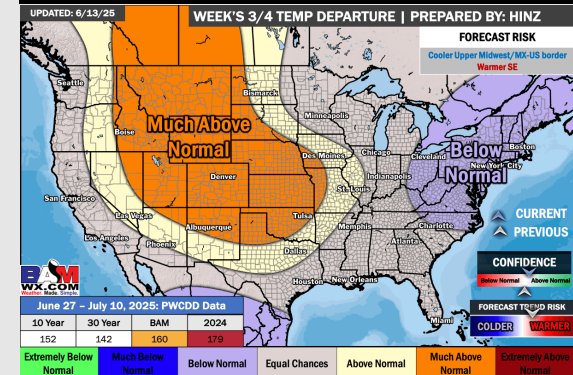
Next 7 Day Temperature Departure



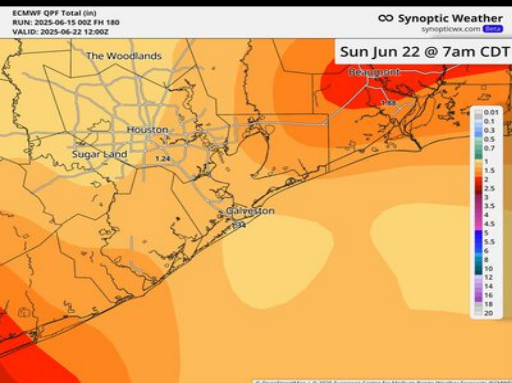
8-14 Day Temperature Departure



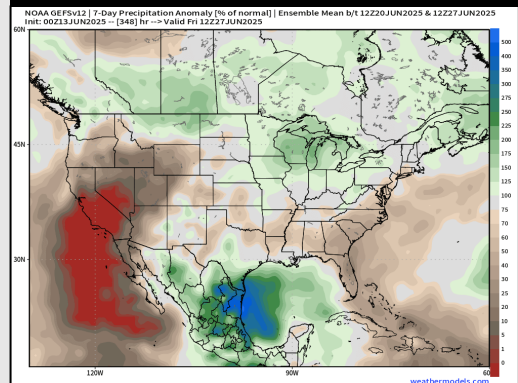
15-30 Day Temperature Departure



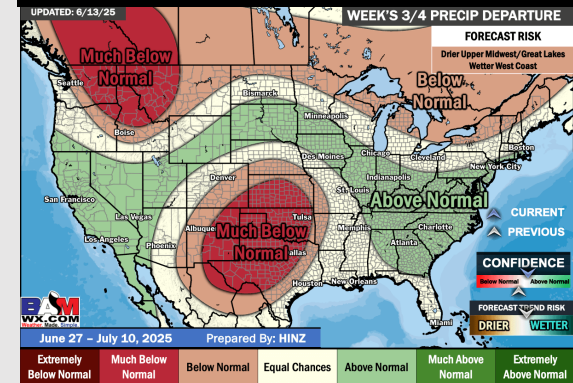
Next 7 Day Total Precipitation



8-14 Day % of Average Precip.



15-30 Day % of Average Precip.



- Temps are expected to be below normal the next 7 days. Scattered rain chances expected, with heavy downpours at times.
- Near normal temps and near to slightly above normal rainfall is favored for days 8 – 14.
- Near normal temperatures are favored late June into early July along with near normal rainfall chances.