

Houston Pilots Forecast Package



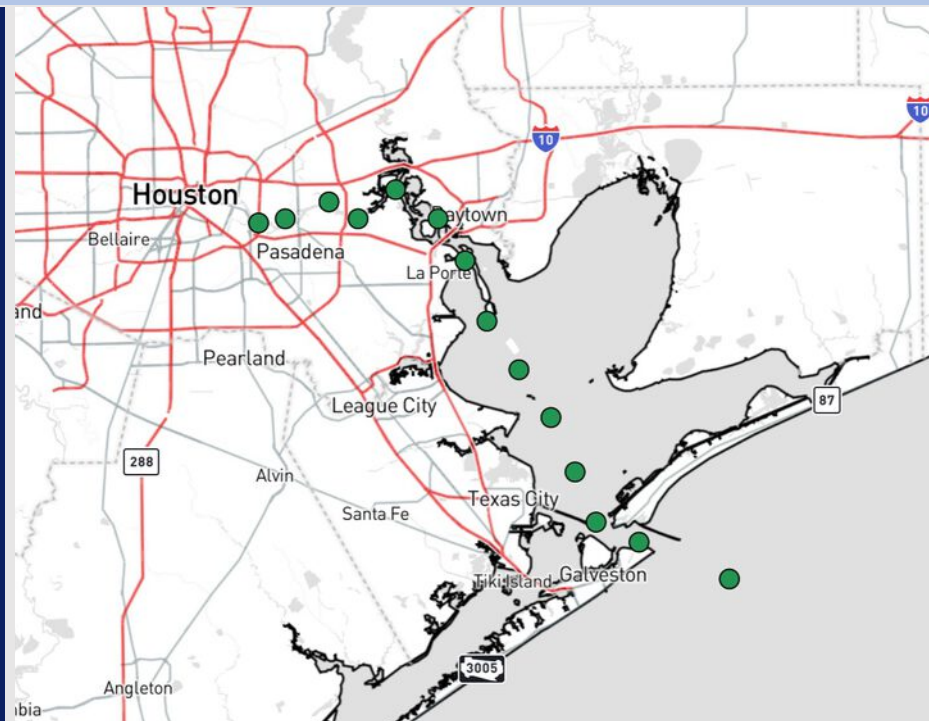
Updated: 10:00 PM CT

Saturday, June 14, 2025

Forecaster: Tyler Riggles

Weather Headlines

- Scattered showers and storms with strong to severe risks expected over the next 72 hours. **Some storms can potentially become severe with frequent lightning, large hail, and wind gusts of 40-50 kts possible as the main hazards.**
- **A low-end risk of non-sea fog will be possible MON AM for Stations N. of Morgan's Point.**



Current Radar: 9:55 PM CT

As always, please do not hesitate to reach out to us with any forecast questions at **(317)-560-8122**. **Press 1 for forecast questions.**

You can also access real-time forecast updates and 24/7 meteorological chat assistance on your **Clarity** app. Click [here](#) for login assistance.



Houston Pilots Visibility Chart (miles)



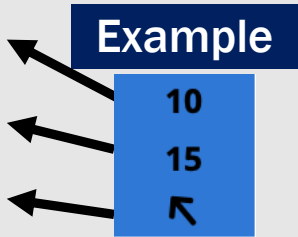
Visibility	Sat 11 pm	Sun 12 am	Sun 1 am	Sun 2 am	Sun 3 am	Sun 4 am	Sun 5 am	Sun 6 am	Sun 7 am	Sun 8 am	Sun 9 am	Sun 10 am	Sun 11 am	Sun 12 pm	Sun 1 pm	Sun 2 pm	Sun 3 pm	Sun 4 pm	Sun 5 pm	Sun 6 pm	Sun 7 pm	Sun 8 pm	Sun 9 pm	Sun 10 pm
Houston Pilots N - 610 Bridge	10	10	10	10	10	10	10	9	9	6.9	7.9	10	10	10	10	10	10	10	10	10	10	10	10	10
Houston Pilots M - Kinder 1	10	10	10	10	10	10	10	9	10	6.9	9	10	10	10	10	10	10	10	10	10	10	10	10	10
Houston Pilots L - Greens Bayou	10	10	10	10	10	10	10	9	10	6.9	9	10	10	10	10	10	10	10	10	10	10	10	10	10
Houston Pilots K - Shell Crude	10	10	10	10	10	10	10	9	10	6.9	9	10	10	10	10	10	10	10	10	10	10	10	10	10
Houston Pilots J - Lynchburg Ferries	10	10	10	10	10	10	10	9	10	6.9	9	10	10	10	10	10	10	10	10	10	10	10	10	10
Houston Pilots I - Exxon 3	10	10	10	10	10	10	10	10	10	6.9	9	10	10	10	10	10	10	10	10	10	10	10	10	10
Houston Pilots H - Morgans Point	10	10	10	10	10	10	10	10	10	6.9	9	10	10	10	10	10	10	10	10	10	10	10	10	10
Houston Pilots G - 75/76	10	10	10	10	10	10	10	10	10	9	9	10	10	10	10	10	10	10	10	10	10	10	10	9
Houston Pilots F - 63/64	10	10	10	10	10	10	10	10	10	9	9	10	10	10	10	10	10	10	10	10	10	10	10	9
Houston Pilots E - 51/52	10	10	10	10	10	10	10	10	10	9	9	10	10	10	10	10	10	10	10	10	10	10	10	9
Houston Pilots D - 37/38	10	10	10	10	10	10	10	10	10	9	9	10	10	10	10	10	10	10	10	10	10	10	10	9
Houston Pilots C - 25/26	10	10	10	10	10	10	10	10	10	10	9	10	10	10	10	10	10	10	10	10	10	10	10	9
Houston Pilots B - 11/12	10	10	10	10	10	10	10	10	10	10	10	10	10	10	10	10	10	10	10	10	10	10	10	9
Houston Pilots A - 1 & 2 Bravo	10	10	10	10	10	10	10	10	10	9	10	10	10	10	10	10	10	10	9	9	6.9	6.9	6.9	9

NOTE: This is automated data that may/may not agree with the official BAM thinking that’s found on the daily slides or special visibility report slides. This data should be used as a guide only

Houston Pilots Wind Chart



Sustained Wind 10 Knots
Gusts 15 Knots
Wind from the SE



Wind	Sat 11 pm	Sun 12 am	Sun 1 am	Sun 2 am	Sun 3 am	Sun 4 am	Sun 5 am	Sun 6 am	Sun 7 am	Sun 8 am	Sun 9 am	Sun 10 am	Sun 11 am	Sun 12 pm	Sun 1 pm	Sun 2 pm	Sun 3 pm	Sun 4 pm	Sun 5 pm	Sun 6 pm	Sun 7 pm	Sun 8 pm	Sun 9 pm	Sun 10 pm
Houston Pilots N - 610 Bridge	6 13 ↖	6 12 ↖	6 10 ↖	6 10 ↖	5 9 ↖	5 9 ↖	5 9 ↖	3 9 ↖	3 9 ↖	3 9 ↖	5 9 ↖	5 10 ↖	6 10 ↖	6 13 ↖	6 13 ↖	7 13 ↖	7 13 ↖	7 13 ↖	7 14 ↖	7 14 ↖	7 14 ↖	7 14 ↖	7 13 ↖	6 13 ↖
Houston Pilots M - Kinder 1	6 13 ↖	6 12 ↖	6 10 ↖	6 10 ↖	5 9 ↖	5 9 ↖	5 9 ↖	3 9 ↖	3 8 ↖	3 9 ↖	5 9 ↖	5 9 ↖	6 10 ↖	6 13 ↖	6 13 ↖	7 13 ↖	7 13 ↖	7 13 ↖	7 14 ↖	7 15 ↖	8 14 ↖	7 14 ↖	7 13 ↖	6 13 ↖
Houston Pilots L - Greens Bayou	6 13 ↖	6 12 ↖	6 10 ↖	5 10 ↖	5 10 ↖	5 9 ↖	5 9 ↖	3 8 ↖	3 8 ↖	3 8 ↖	3 9 ↖	5 9 ↖	6 10 ↖	6 13 ↖	6 13 ↖	7 13 ↖	7 14 ↖	8 14 ↖	8 14 ↖	8 15 ↖	8 14 ↖	7 14 ↖	7 13 ↖	6 13 ↖
Houston Pilots K - Shell Crude	6 13 ↖	6 12 ↖	6 10 ↖	6 10 ↖	5 9 ↖	5 9 ↖	5 9 ↖	3 8 ↖	3 8 ↖	3 8 ↖	3 9 ↖	5 9 ↖	6 10 ↖	6 13 ↖	6 13 ↖	7 14 ↖	8 14 ↖	8 14 ↖	8 14 ↖	8 15 ↖	8 14 ↖	7 14 ↖	7 13 ↖	6 13 ↖
Houston Pilots J - Lynchburg Ferries	6 12 ↖	6 12 ↖	5 10 ↖	5 10 ↖	5 9 ↖	3 9 ↖	3 9 ↖	3 8 ↖	3 8 ↖	3 8 ↖	3 8 ↖	5 9 ↖	6 10 ↖	6 13 ↖	7 13 ↖	7 14 ↖	8 14 ↖	8 14 ↖	8 15 ↖	8 15 ↖	8 15 ↖	7 15 ↖	7 13 ↖	6 13 ↖
Houston Pilots I - Exxon 3	10 15 ↖	9 15 ↖	9 14 ↖	9 14 ↖	8 13 ↖	8 13 ↖	8 13 ↖	8 12 ↖	7 12 ↖	7 12 ↖	7 12 ↖	7 12 ↖	8 13 ↖	8 13 ↖	8 14 ↖	9 15 ↖	9 15 ↖	10 16 ↖	10 16 ↖	10 17 ↖	10 17 ↖	10 16 ↖	10 16 ↖	10 15 ↖
Houston Pilots H - Morgans Point	10 15 ↖	10 15 ↖	9 15 ↖	9 15 ↖	9 14 ↖	8 13 ↖	8 13 ↖	8 12 ↖	8 12 ↖	8 12 ↖	8 12 ↖	8 12 ↖	8 13 ↖	8 13 ↖	8 15 ↖	9 16 ↖	9 16 ↖	10 16 ↖	10 16 ↖	10 17 ↖	10 17 ↖	10 16 ↖	10 16 ↖	10 15 ↖
Houston Pilots G - 75/76	12 16 ↖	12 16 ↖	10 16 ↖	12 16 ↖	10 16 ↖	10 15 ↖	10 15 ↖	9 14 ↖	9 14 ↖	9 14 ↖	8 14 ↖	8 14 ↖	8 14 ↖	8 14 ↖	9 16 ↖	9 16 ↖	10 17 ↖	10 17 ↖	10 17 ↖	12 18 ↖	12 17 ↖	12 17 ↖	12 16 ↖	12 16 ↖
Houston Pilots F - 63/64	12 16 ↖	12 16 ↖	12 17 ↖	12 17 ↖	10 16 ↖	10 15 ↖	10 15 ↖	10 15 ↖	9 14 ↖	9 14 ↖	9 14 ↖	8 14 ↖	8 14 ↖	9 15 ↖	9 16 ↖	9 16 ↖	9 16 ↖	10 17 ↖	10 17 ↖	12 18 ↖	12 17 ↖	12 17 ↖	12 16 ↖	12 16 ↖
Houston Pilots E - 51/52	12 17 ↖	12 17 ↖	12 17 ↖	13 17 ↖	12 17 ↖	10 16 ↖	10 16 ↖	10 15 ↖	10 15 ↖	10 15 ↖	9 15 ↖	9 15 ↖	9 15 ↖	9 15 ↖	9 16 ↖	10 17 ↖	10 17 ↖	10 17 ↖	10 17 ↖	12 18 ↖	12 17 ↖	12 16 ↖	12 16 ↖	12 16 ↖
Houston Pilots D - 37/38	12 17 ↖	12 17 ↖	12 17 ↖	13 17 ↖	12 17 ↖	10 16 ↖	10 16 ↖	10 15 ↖	10 15 ↖	10 15 ↖	9 15 ↖	9 15 ↖	9 15 ↖	9 15 ↖	10 16 ↖	10 16 ↖	10 16 ↖	10 16 ↖	10 17 ↖	12 18 ↖	12 17 ↖	12 16 ↖	12 16 ↖	12 16 ↖
Houston Pilots C - 25/26	10 16 ↖	12 17 ↖	12 17 ↖	12 17 ↖	12 17 ↖	10 16 ↖	10 16 ↖	10 15 ↖	10 15 ↖	10 15 ↖	9 15 ↖	9 15 ↖	10 15 ↖	10 15 ↖	10 16 ↖	10 16 ↖	10 16 ↖	10 16 ↖	10 16 ↖	10 16 ↖	10 16 ↖	10 15 ↖	10 15 ↖	10 15 ↖
Houston Pilots B - 11/12	10 16 ↖	10 16 ↖	10 17 ↖	10 17 ↖	10 16 ↖	10 16 ↖	9 16 ↖	9 15 ↖	9 15 ↖	8 15 ↖	8 15 ↖	8 15 ↖	9 15 ↖	9 15 ↖	9 15 ↖	9 15 ↖	9 15 ↖	9 15 ↖	9 15 ↖	10 16 ↖	10 16 ↖	10 15 ↖	10 15 ↖	9 15 ↖
Houston Pilots A - 1 & 2 Bravo	12 17 ↖	13 17 ↖	13 17 ↖	13 18 ↖	13 17 ↖	13 17 ↖	12 17 ↖	12 16 ↖	10 15 ↖	10 15 ↖	10 15 ↖	10 15 ↖	9 15 ↖	9 14 ↖	9 15 ↖	9 14 ↖	8 14 ↖	8 14 ↖	9 15 ↖	9 16 ↖	10 16 ↖	10 15 ↖	10 15 ↖	10 16 ↖

NOTE: This is automated data that may/may not agree with the official BAM thinking that's found on the daily slides.
This data should be used as a guide only.

Houston Pilots: SUN. 6/15/2025

Forecast Discussion

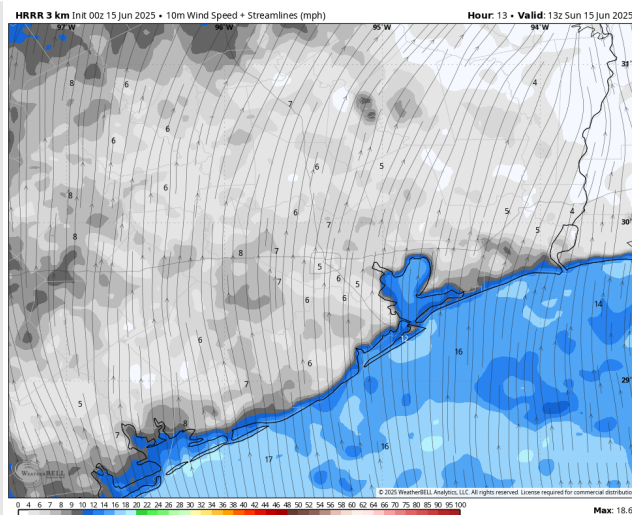
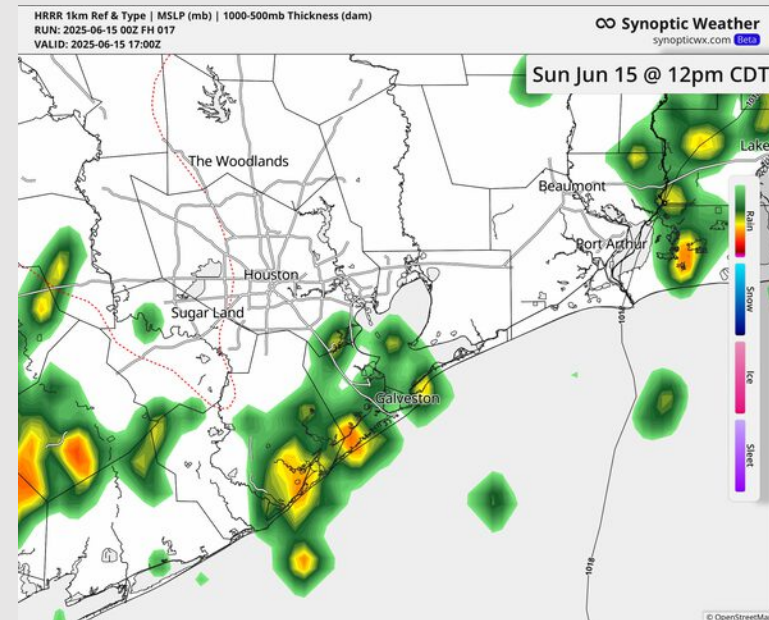
Precip: Scattered showers and storms will be possible from 10 AM – 3 PM. After 3PM, activity is expected to become more isolated in nature through 10 PM as the more widespread activity stays to the North of Stations. **Some storms will be able to become severe with risks for lightning, hail and 35 – 50 kt gusts.**

Wind: Winds will be out of the S/SE, becoming variable after 1PM. **N of Morgan's Point:** Winds will be at 3 – 8 kts throughout the day. **S of Morgan's Point:** Winds will be at 5 – 10 kts. **Non-thunderstorm wind gusts of 20 kts will be possible for Stations S of Morgan's Point through 10 AM.**

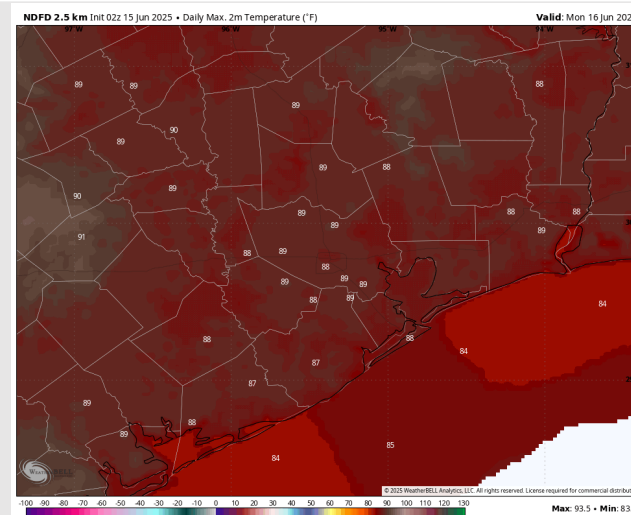
High Temps: **N of Morgan's Point:** Low 90s F. **S of Morgan's Point:** High 80s F.

Visibility: No fog concerns today however visibilities can be reduced under heavier downpours.

Precip Image: 12 PM CT



Wind Speed:
8 AM CT



High Temps
Today

Houston Pilots: MON. 6/16/2025

Forecast Discussion

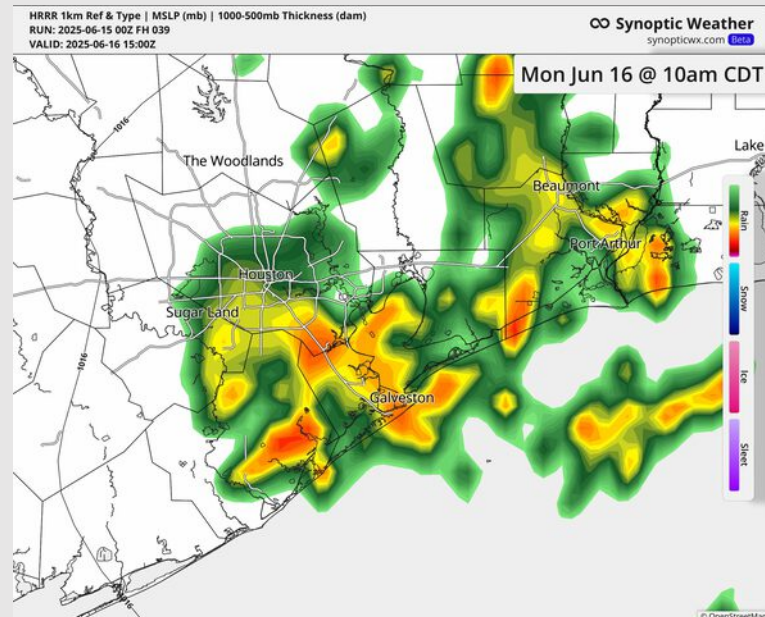
Precip: Scattered showers and storms in play for all Stations between 3 AM and 4 PM. **Some storms will be able to become severe with risks for lightning, hail and 35 – 45 kt gusts.**

Wind: Winds will be out of the S/SE. **N of Morgan's Point:** Winds will be at 2 - 7 kts. **S of Morgan's Point:** Winds will be at 7 – 12 kts throughout the day.

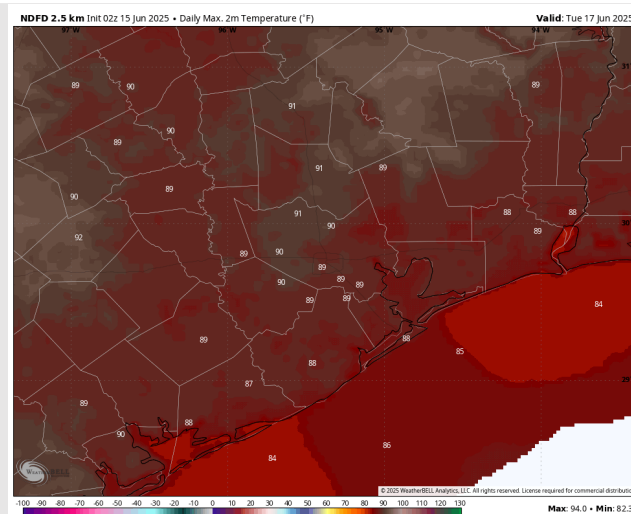
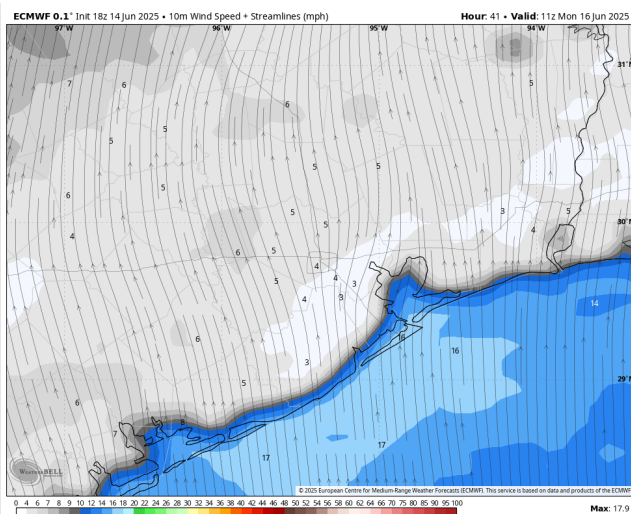
High Temps: **N of Morgan's Point:** Near 90 F. **S of Morgan's Point:** High 80s F.

Visibility: Monitoring a low-end non-sea fog risk for Stations N of Morgan's Point prior to 3 AM. Visibilities can also be reduced below heavy downpours.

Precip Image: 10 AM CT



Wind Speed:
8 AM CT



High Temps
Monday

Houston Pilots: TUE. 6/17/2025

Forecast Discussion

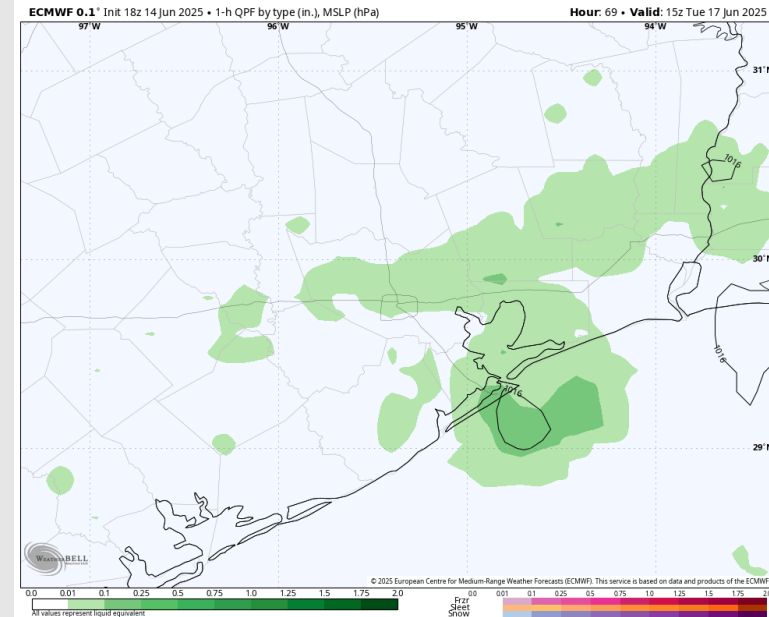
Precip: Scattered showers and storms will be possible for all Stations from 4 AM to 12 PM. **Strong storms with wind gusts of 30 – 40 kts and heavy downpours possible.**

Wind: Winds will be out of the S/SE. **N of Morgan's Point:** Winds will be at 4 – 9 kts. **S of Morgan's Point:** Winds will be at 12 - 17 kts through 6 AM before decreasing to 5-10 kts. **Non-thunderstorm wind gusts of 20 kts will be in play for all Stations throughout the day.**

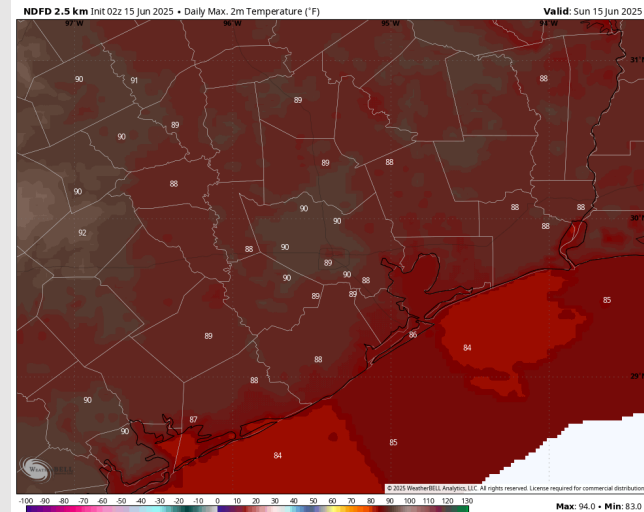
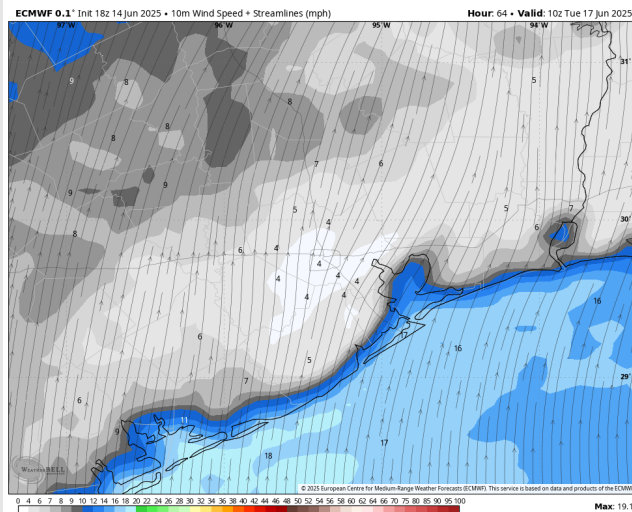
High Temps: **N of Morgan's Point:** Low 90s F. **S of Morgan's Point:** High 80s F.

Visibility: No fog concerns Tuesday however visibility may be reduced under heavier downpours.

Precip Image: 10 AM CT



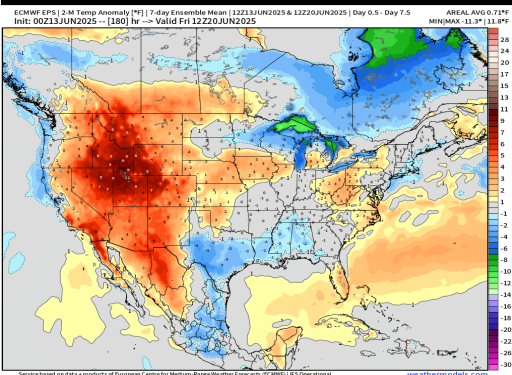
Wind Speed:
5 AM CT



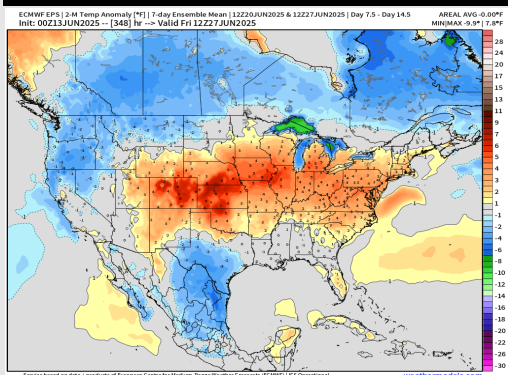
High Temps
Tuesday

Houston Pilots: 6/15/25

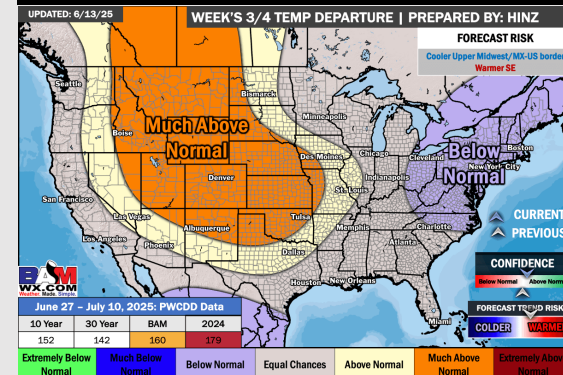
Next 7 Day Temperature Departure



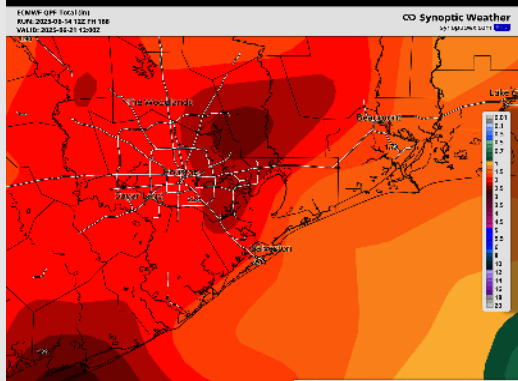
8-14 Day Temperature Departure



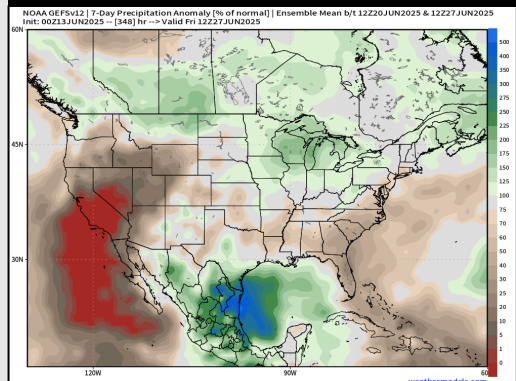
15-30 Day Temperature Departure



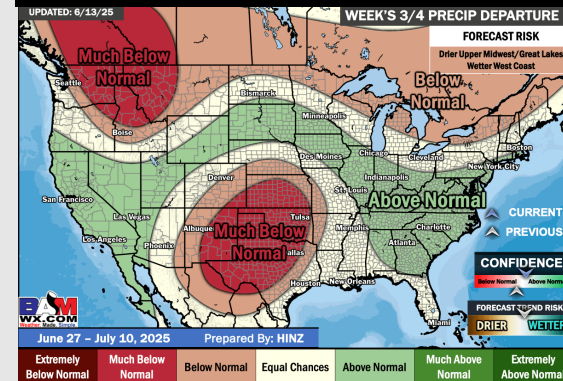
Next 7 Day Total Precipitation



8-14 Day % of Average Precip.



15-30 Day % of Average Precip.



- Temps are expected to be below normal the next 7 days. Scattered rain chances expected, with heavy downpours at times.
- Near normal temps and near to slightly above normal rainfall is favored for days 8 – 14.
- Near normal temperatures are favored late June into early July along with near normal rainfall chances.