

# Houston Pilots Forecast Package



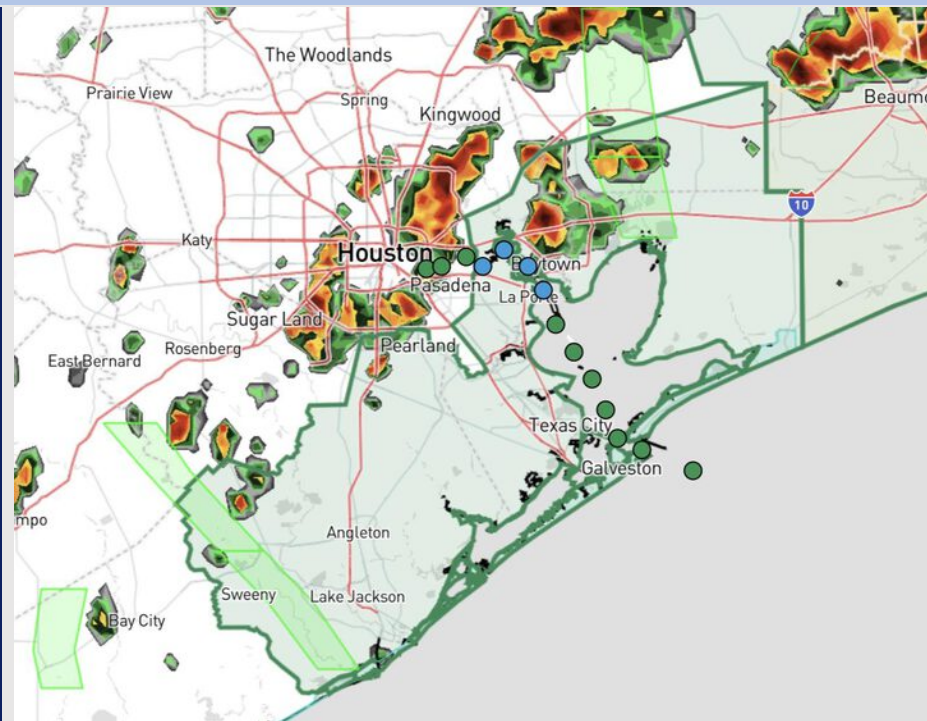
Updated: 1:20 PM CT

Friday, June 13, 2025

Forecaster: Alyssa Elliott

## Weather Headlines

- Wave heights at the Boarding Station are expected to be 3 – 4' through the PM.
- Scattered showers and storms today expected until 6PM. **Some storms can potentially become severe with frequent lightning, large hail, and wind gusts of 40-50 kts possible as the main hazards.**



Current Radar: 1:00 PM CT

As always, please do not hesitate to reach out to us with any forecast questions at **(317)-560-8122**. **Press 1 for forecast questions.**

You can also access real-time forecast updates and 24/7 meteorological chat assistance on your **Clarity** app. Click **here** for login assistance.



# Houston Pilots Visibility Chart (miles)



Visibility	Fri 3 pm	Fri 4 pm	Fri 5 pm	Fri 6 pm	Fri 7 pm	Fri 8 pm	Fri 9 pm	Fri 10 pm	Fri 11 pm	Sat 12 am	Sat 1 am	Sat 2 am	Sat 3 am	Sat 4 am	Sat 5 am	Sat 6 am	Sat 7 am	Sat 8 am	Sat 9 am	Sat 10 am	Sat 11 am	Sat 12 pm	Sat 1 pm	Sat 2 pm
Houston Pilots N - 610 Bridge	10	6.9	10	10	10	10	10	10	10	10	10	10	10	10	10	9	9	6.9	6.9	10	10	10	10	10
Houston Pilots M - Kinder 1	10	6.9	10	10	10	10	10	10	10	10	10	10	10	10	10	10	9	6.9	6.9	10	10	10	10	10
Houston Pilots L - Greens Bayou	10	6.9	10	10	10	10	10	10	10	10	10	10	10	10	10	10	9	6.9	6.9	10	10	10	10	10
Houston Pilots K - Shell Crude	10	6.9	10	10	10	10	10	10	10	10	10	10	10	10	10	10	9	6.9	6.9	10	10	10	10	10
Houston Pilots J - Lynchburg Ferries	6.9	6.9	10	10	10	10	10	10	10	10	10	10	10	10	10	9	9	6.9	6.9	10	10	10	10	10
Houston Pilots I - Exxon 3	6.9	3.9	10	10	10	10	10	10	10	10	10	10	10	10	10	10	9	6.9	6.9	10	10	10	10	10
Houston Pilots H - Morgans Point	10	10	10	10	10	10	10	10	10	10	10	10	10	10	10	10	10	6.9	7.9	10	10	10	10	10
Houston Pilots G - 75/76	10	10	10	10	10	10	10	10	10	10	10	10	10	10	10	10	10	7.9	7.9	10	10	10	10	10
Houston Pilots F - 63/64	10	10	10	10	10	10	10	10	10	10	10	10	10	10	10	10	10	7.9	7.9	10	10	10	10	10
Houston Pilots E - 51/52	10	10	10	10	10	10	10	10	10	10	10	10	10	10	10	10	10	7.9	7.9	10	10	10	10	10
Houston Pilots D - 37/38	10	10	10	10	10	10	10	10	10	10	10	10	10	10	10	10	10	7.9	7.9	10	10	10	10	10
Houston Pilots C - 25/26	10	10	10	10	10	10	10	10	10	10	10	10	10	10	10	10	10	7.9	7.9	10	10	10	10	10
Houston Pilots B - 11/12	10	10	10	9	10	10	10	10	10	10	10	10	10	10	10	10	10	7.9	7.9	10	10	10	10	10
Houston Pilots A - 1 & 2 Bravo	7.9	7.9	9	9	9	10	9	9	9	9	9	10	10	10	10	10	10	6.9	6.9	7.9	9	7.9	10	10

NOTE: This is automated data that may/may not agree with the official BAM thinking that's found on the daily slides or special visibility report slides. This data should be used as a guide only

# Houston Pilots Wind Chart



Sustained Wind 10 Knots  
Gusts 15 Knots  
Wind from the SE



Wind	Fri 3 pm	Fri 4 pm	Fri 5 pm	Fri 6 pm	Fri 7 pm	Fri 8 pm	Fri 9 pm	Fri 10 pm	Fri 11 pm	Sat 12 am	Sat 1 am	Sat 2 am	Sat 3 am	Sat 4 am	Sat 5 am	Sat 6 am	Sat 7 am	Sat 8 am	Sat 9 am	Sat 10 am	Sat 11 am	Sat 12 pm	Sat 1 pm	Sat 2 pm
Houston Pilots N - 610 Bridge	8 16 ↗	8 16 ↗	8 16 ↗	8 15 ↗	8 15 ↗	8 14 ↗	7 13 ↗	6 13 ↗	6 12 ↗	6 12 ↗	6 12 ↗	5 10 ↗	5 10 ↗	5 10 ↗	5 10 ↗	5 10 ↗	5 10 ↗	5 10 ↗	5 10 ↗	6 10 ↗	6 12 ↗	7 13 ↗	7 13 ↗	7 15 ↗
Houston Pilots M - Kinder 1	8 16 ↗	8 16 ↗	8 16 ↗	8 16 ↗	8 15 ↗	8 14 ↗	7 13 ↗	6 12 ↗	6 12 ↗	6 12 ↗	6 10 ↗	6 12 ↗	5 10 ↗	5 10 ↗	5 10 ↗	5 10 ↗	5 9 ↗	5 10 ↗	5 10 ↗	6 10 ↗	6 12 ↗	7 13 ↗	7 13 ↗	7 15 ↗
Houston Pilots L - Greens Bayou	8 16 ↗	8 16 ↗	8 16 ↗	8 16 ↗	8 15 ↗	8 13 ↗	7 13 ↗	6 12 ↗	6 12 ↗	6 10 ↗	6 10 ↗	6 10 ↗	5 10 ↗	5 10 ↗	5 10 ↗	5 9 ↗	5 9 ↗	5 9 ↗	5 10 ↗	6 10 ↗	6 12 ↗	7 13 ↗	7 13 ↗	8 15 ↗
Houston Pilots K - Shell Crude	8 16 ↗	8 16 ↗	8 16 ↗	8 16 ↗	8 15 ↗	7 13 ↗	6 13 ↗	6 12 ↗	6 12 ↗	6 12 ↗	6 12 ↗	6 10 ↗	5 10 ↗	5 10 ↗	5 10 ↗	5 10 ↗	5 10 ↗	5 10 ↗	5 10 ↗	6 10 ↗	6 12 ↗	7 13 ↗	7 14 ↗	8 15 ↗
Houston Pilots J - Lynchburg Ferries	8 16 ↗	8 16 ↗	8 16 ↗	8 16 ↗	8 15 ↗	7 14 ↗	6 13 ↗	6 12 ↗	6 10 ↗	6 10 ↗	5 10 ↗	6 10 ↗	5 10 ↗	5 10 ↗	5 10 ↗	3 9 ↗	3 9 ↗	3 9 ↗	5 9 ↗	6 10 ↗	6 12 ↗	7 13 ↗	7 14 ↗	8 15 ↗
Houston Pilots I - Exxon 3	10 17 ↗	10 18 ↗	10 17 ↗	10 17 ↗	10 16 ↗	10 16 ↗	10 15 ↗	9 15 ↗	9 14 ↗	9 14 ↗	9 15 ↗	9 14 ↗	8 14 ↗	8 14 ↗	8 14 ↗	8 13 ↗	8 13 ↗	8 13 ↗	8 13 ↗	8 13 ↗	8 13 ↗	8 14 ↗	8 15 ↗	9 16 ↗
Houston Pilots H - Morgans Point	10 17 ↗	10 18 ↗	10 17 ↗	10 17 ↗	10 17 ↗	10 16 ↗	10 16 ↗	10 15 ↗	9 14 ↗	9 14 ↗	9 15 ↗	10 14 ↗	9 14 ↗	9 14 ↗	9 14 ↗	8 14 ↗	8 13 ↗	8 13 ↗	8 13 ↗	8 13 ↗	8 14 ↗	8 14 ↗	9 15 ↗	9 16 ↗
Houston Pilots G - 75/76	10 18 ↗	10 20 ↗	12 18 ↗	12 20 ↗	12 18 ↗	12 17 ↗	12 17 ↗	10 16 ↗	10 16 ↗	10 16 ↗	10 16 ↗	12 16 ↗	12 16 ↗	10 16 ↗	10 16 ↗	10 16 ↗	10 15 ↗	10 15 ↗	10 15 ↗	10 15 ↗	9 15 ↗	9 16 ↗	9 16 ↗	10 17 ↗
Houston Pilots F - 63/64	10 18 ↗	10 20 ↗	12 18 ↗	12 18 ↗	12 18 ↗	12 17 ↗	12 16 ↗	10 16 ↗	10 16 ↗	10 16 ↗	10 16 ↗	12 17 ↗	12 17 ↗	12 17 ↗	12 17 ↗	10 16 ↗	10 15 ↗	10 15 ↗	10 16 ↗	10 16 ↗	10 15 ↗	10 16 ↗	10 17 ↗	10 17 ↗
Houston Pilots E - 51/52	10 20 ↗	10 20 ↗	12 18 ↗	12 18 ↗	12 17 ↗	12 17 ↗	12 16 ↗	10 16 ↗	10 16 ↗	10 16 ↗	10 16 ↗	12 17 ↗	13 17 ↗	12 17 ↗	13 17 ↗	12 16 ↗	12 16 ↗	12 16 ↗	10 16 ↗	10 16 ↗	10 16 ↗	10 17 ↗	10 17 ↗	10 17 ↗
Houston Pilots D - 37/38	10 18 ↗	12 18 ↗	10 18 ↗	10 18 ↗	12 17 ↗	12 16 ↗	10 16 ↗	10 16 ↗	10 16 ↗	12 16 ↗	12 17 ↗	13 17 ↗	13 17 ↗	13 17 ↗	13 17 ↗	13 17 ↗	13 17 ↗	12 17 ↗	12 17 ↗	10 16 ↗	10 16 ↗	10 17 ↗	10 17 ↗	10 17 ↗
Houston Pilots C - 25/26	10 18 ↗	10 18 ↗	10 17 ↗	10 17 ↗	10 16 ↗	10 16 ↗	10 16 ↗	10 16 ↗	10 16 ↗	10 16 ↗	12 17 ↗	12 17 ↗	12 17 ↗	12 17 ↗	12 17 ↗	12 17 ↗	12 17 ↗	12 17 ↗	12 17 ↗	10 16 ↗	10 16 ↗	10 17 ↗	10 17 ↗	10 17 ↗
Houston Pilots B - 11/12	10 17 ↗	10 16 ↗	10 16 ↗	10 16 ↗	10 15 ↗	10 15 ↗	9 15 ↗	9 15 ↗	9 15 ↗	10 16 ↗	10 16 ↗	10 17 ↗	10 17 ↗	10 17 ↗	10 17 ↗	10 17 ↗	10 16 ↗	10 16 ↗	10 16 ↗	10 16 ↗	10 16 ↗	10 16 ↗	10 16 ↗	10 16 ↗
Houston Pilots A - 1 & 2 Bravo	10 16 ↗	10 16 ↗	10 16 ↗	10 16 ↗	10 16 ↗	10 16 ↗	10 16 ↗	10 16 ↗	10 16 ↗	12 17 ↗	13 18 ↗	13 18 ↗	13 18 ↗	13 18 ↗	13 18 ↗	13 18 ↗	13 18 ↗	13 18 ↗	12 17 ↗	10 16 ↗	10 16 ↗	10 15 ↗	10 15 ↗	10 15 ↗

NOTE: This is automated data that may/may not agree with the official BAM thinking that's found on the daily slides.  
This data should be used as a guide only.

# Houston Pilots: FRI. 6/13/2025

## Forecast Discussion

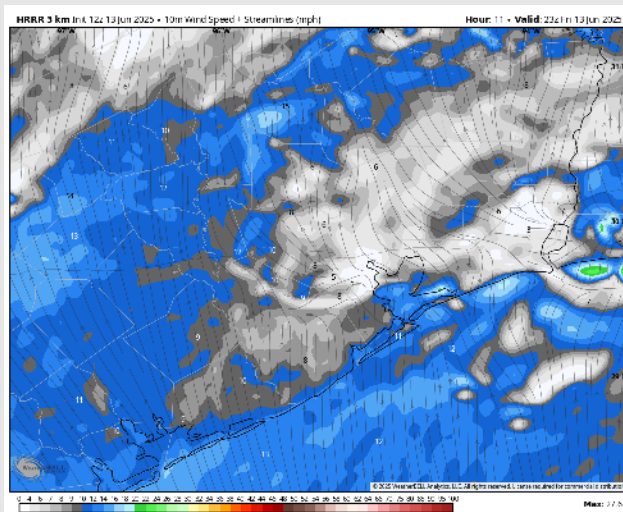
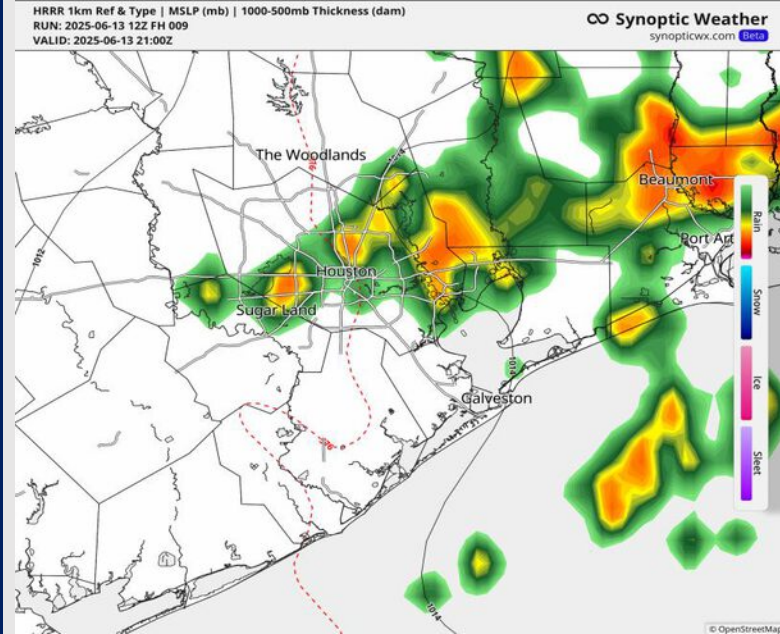
**Precip:** Scattered showers and storms will be in play through 6PM. Between 6 PM – 12 AM showers will be isolated in nature. **Some storms can potentially become severe with frequent lightning, hail, and wind gusts of 40-50 kts possible as the main risks.**

**Wind:** Winds will be out of the S/SW for today. **N of Morgan's Point:** Winds will be at 7 – 12 kts. **S of Morgan's Point:** Winds will be at 15 – 20 kts through the rest of the day. **Non-thunderstorm wind gusts of 20-25 kts will be possible for all stations through 5 PM.**

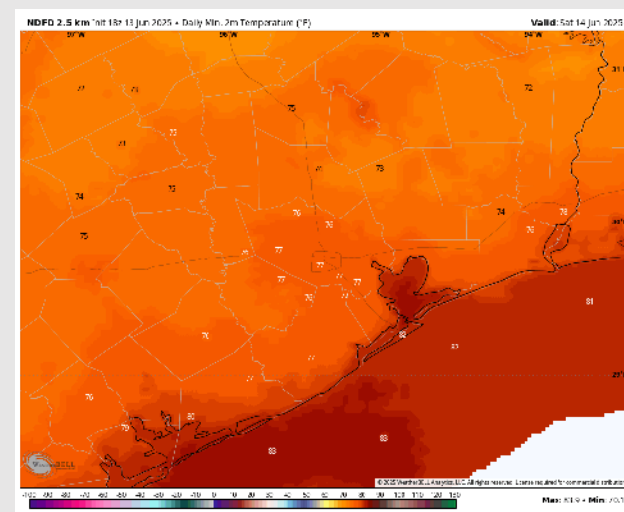
**Low Temps:** **N of Morgan's Point:** High 70s F. **S of Morgan's Point:** Low 80s F.

**Visibility:** No fog concerns today, however, visibilities may be reduced under heavy downpours.

## Precip Image: 4 PM CT



**Wind Speed:**  
6 PM CT



**Low Temps**  
SAT AM



# Houston Pilots: SAT. 6/14/2025

## Forecast Discussion

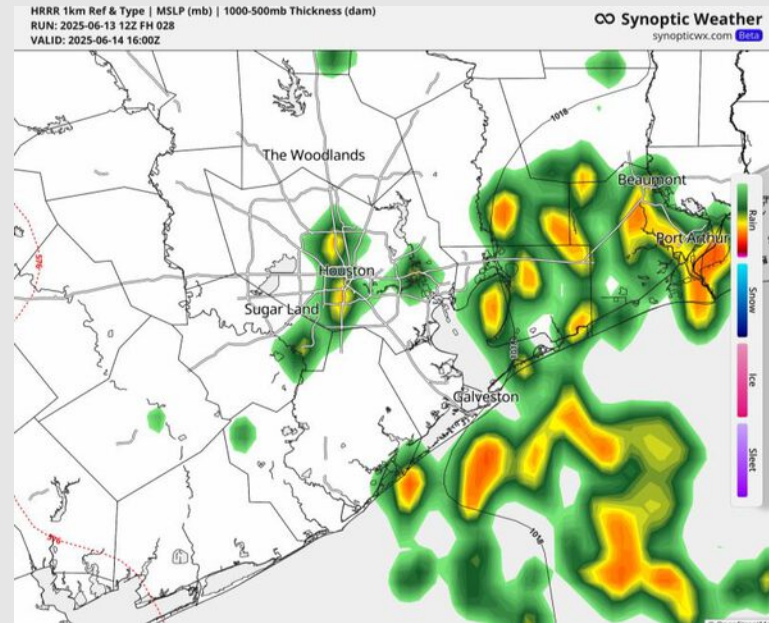
**Precip:** Scattered showers and storms are expected from 5AM - 9AM with additional scattered showers and storms from 1PM - 5PM. **Wind gusts of 30 - 40+ kts, lightning, and heavy downpours will be possible.**

**Wind:** Winds will be out of the S/SE. **N of Morgan's Point:** Winds will be at 2 - 7 kts. **S of Morgan's Point:** Winds will be at 10 - 15 kts through 8AM before decreasing to 3 - 8 kts the rest of the day.

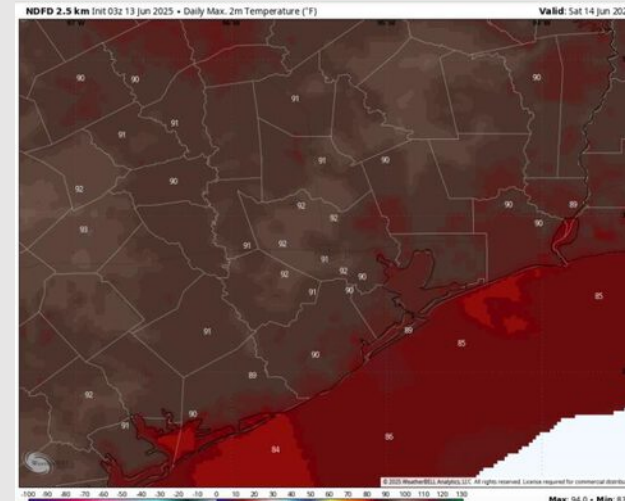
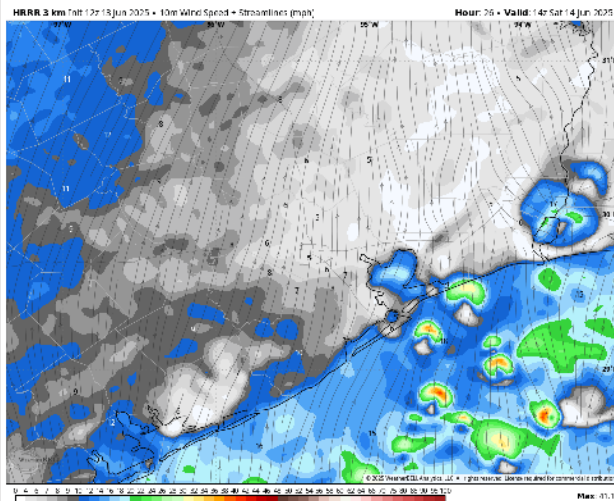
**High Temps:** **N of Morgan's Point:** Low 90s F. **S of Morgan's Point:** High 80s F.

**Visibility:** No fog concerns Saturday, however, visibility may be reduced under heavier downpours.

## Precip Image: 11 AM CT



Wind Speed  
3 AM CT



High Temps  
Saturday

# Houston Pilots: SUN. 6/15/2025

## Forecast Discussion

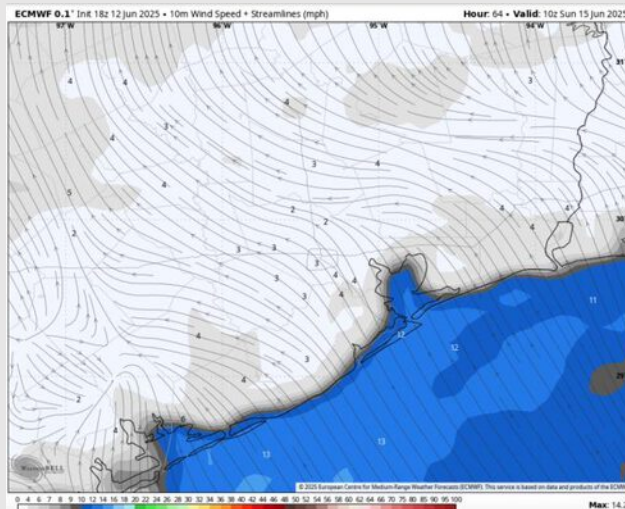
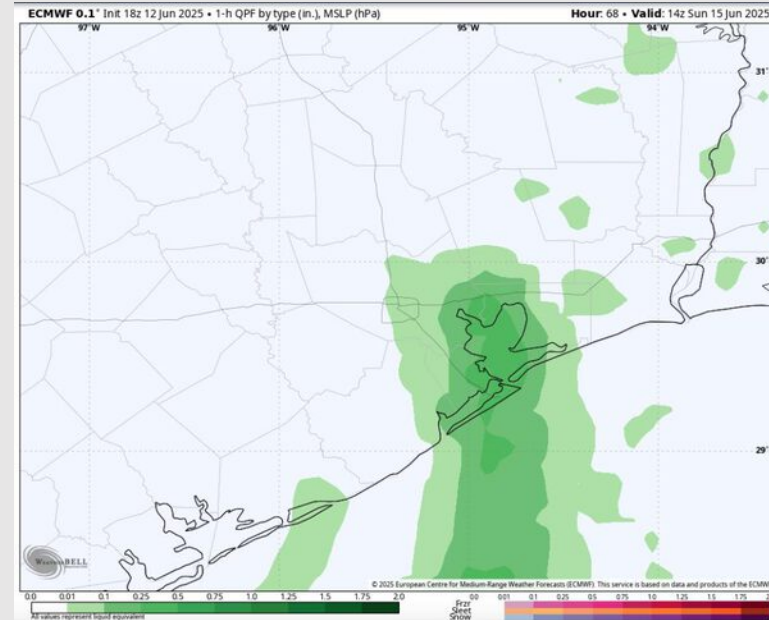
**Precip:** Scattered showers and storms will be possible from 8AM – 2PM Sunday.

**Wind:** **N of Morgan's Point:** Winds will be from the SE at 1 – 6 kts. **S of Morgan's Point:** Winds will be from the SE at 6 – 11 kts.

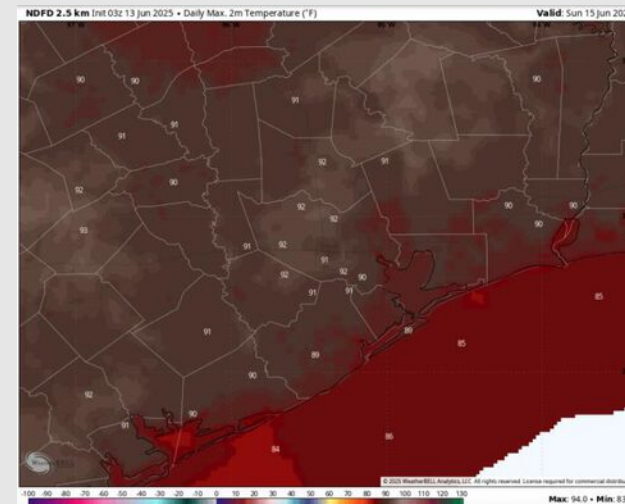
**High Temps:** **N of Morgan's Point:** Low 90s F. **S of Morgan's Point:** High 80s F.

**Visibility:** No visibility concerns Sunday.

## Precip Image: 9AM CT



**Wind Speed:**  
5 AM CT

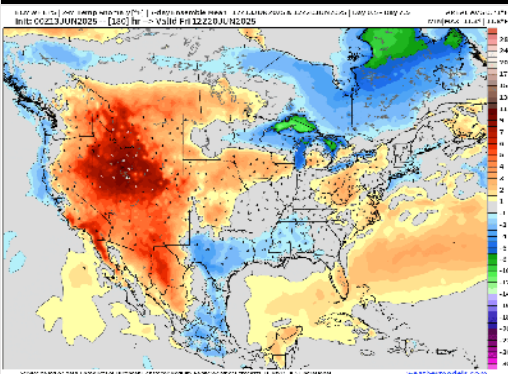


**High Temps**  
**Sunday**

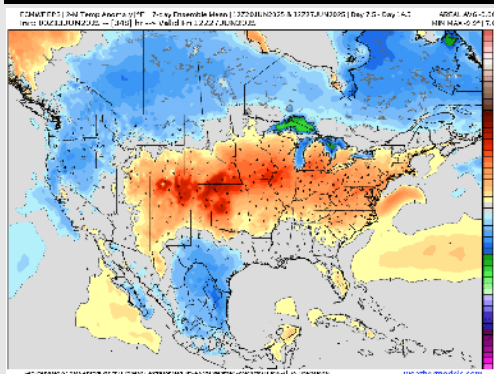


# Houston Pilots: 6/13/25

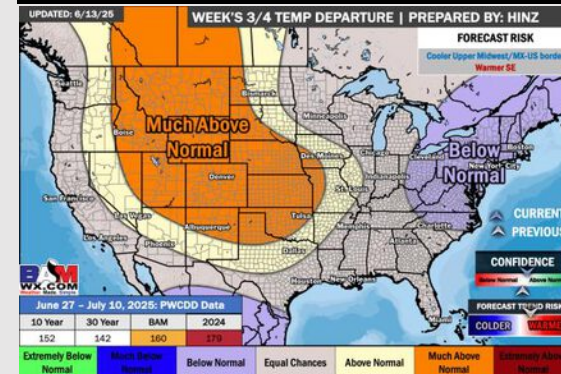
## Next 7 Day Temperature Departure



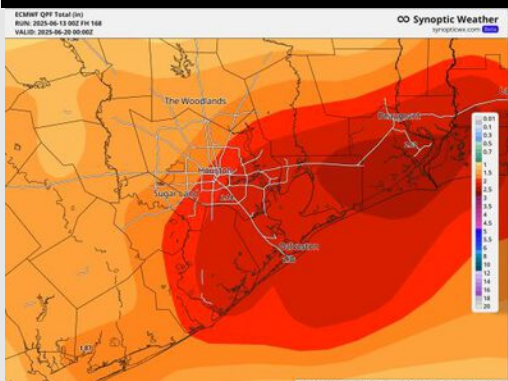
## 8-14 Day Temperature Departure



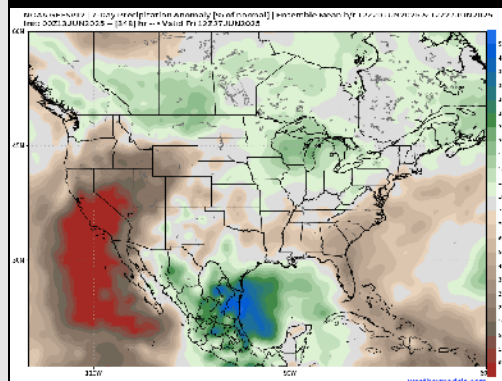
## 15-30 Day Temperature Departure



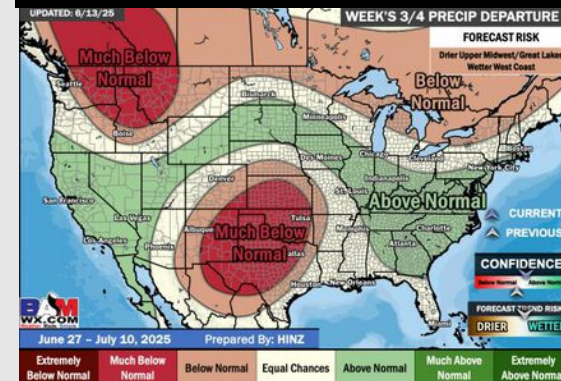
## Next 7 Day Total Precipitation



## 8-14 Day % of Average Precip.



## 15-30 Day % of Average Precip.



- Temps are expected to be below normal the next 7 days. Scattered rain chances expected, with heavy downpours at times.
- Near normal temps and near normal rainfall is favored for days 8 – 14.
- Near normal temperatures are favored late June into early July along with near normal rainfall chances.