

Houston Pilots Forecast Package



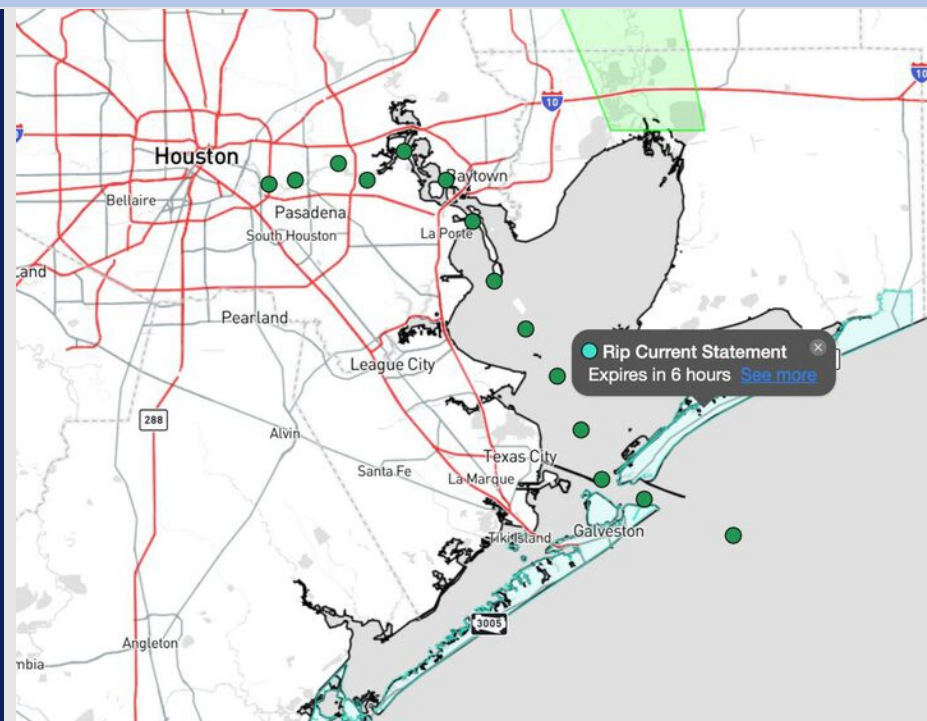
Updated: 1:30 PM CT

Monday, June 9, 2025

Forecaster: Hope Kleitsch

Weather Headlines

- Wave heights at the Boarding Station are expected to increase to 3 – 4' through TUE.
- **Non-thunderstorm wind gusts of 20 – 25 kts will be possible for all stations the remainder of today and on Wednesday.**
- **Strong to severe storms will be possible through Wednesday.**



Current Radar: 1:30 PM CT

As always, please do not hesitate to reach out to us with any forecast questions at (317)-560-8122. Press 1 for forecast questions.

You can also access real-time forecast updates and 24/7 meteorological chat assistance on your [Clarity](#) app. Click [here](#) for login assistance.



Houston Pilots Visibility Chart (miles)



| Visibility | Mon 3 pm | Mon 4 pm | Mon 5 pm | Mon 6 pm | Mon 7 pm | Mon 8 pm | Mon 9 pm | Mon 10 pm | Mon 11 pm | Tue 12 am | Tue 1 am | Tue 2 am | Tue 3 am | Tue 4 am | Tue 5 am | Tue 6 am | Tue 7 am | Tue 8 am | Tue 9 am | Tue 10 am | Tue 11 am | Tue 12 pm | Tue 1 pm | Tue 2 pm |
|--------------------------------------|----------|----------|----------|----------|----------|----------|----------|-----------|-----------|-----------|----------|----------|----------|----------|----------|----------|----------|----------|----------|-----------|-----------|-----------|----------|----------|
| Houston Pilots N - 610 Bridge | 10 | 10 | 10 | 9 | 7.9 | 10 | 10 | 10 | 10 | 10 | 10 | 10 | 10 | 10 | 10 | 10 | 10 | 9 | 9 | 10 | 10 | 10 | 10 | 10 |
| Houston Pilots M - Kinder 1 | 10 | 10 | 10 | 9 | 7.9 | 10 | 10 | 10 | 10 | 10 | 10 | 10 | 10 | 10 | 10 | 10 | 10 | 9 | 9 | 10 | 10 | 10 | 10 | 10 |
| Houston Pilots L - Greens Bayou | 10 | 10 | 10 | 9 | 7.9 | 10 | 10 | 10 | 10 | 10 | 10 | 10 | 10 | 10 | 10 | 10 | 10 | 9 | 9 | 10 | 10 | 10 | 10 | 10 |
| Houston Pilots K - Shell Crude | 10 | 10 | 10 | 9 | 7.9 | 10 | 10 | 10 | 10 | 10 | 10 | 10 | 10 | 10 | 10 | 10 | 10 | 9 | 9 | 10 | 10 | 10 | 10 | 10 |
| Houston Pilots J - Lynchburg Ferries | 10 | 10 | 10 | 9 | 10 | 10 | 10 | 10 | 10 | 10 | 10 | 10 | 10 | 10 | 10 | 10 | 10 | 9 | 9 | 10 | 10 | 10 | 10 | 10 |
| Houston Pilots I - Exxon 3 | 10 | 10 | 10 | 10 | 10 | 10 | 10 | 10 | 10 | 10 | 10 | 10 | 10 | 10 | 10 | 10 | 10 | 9 | 9 | 10 | 10 | 10 | 10 | 10 |
| Houston Pilots H - Morgans Point | 10 | 10 | 10 | 10 | 10 | 10 | 10 | 10 | 10 | 10 | 10 | 10 | 10 | 10 | 10 | 10 | 10 | 9 | 9 | 10 | 10 | 10 | 10 | 10 |
| Houston Pilots G - 75/76 | 10 | 10 | 10 | 10 | 10 | 10 | 10 | 10 | 10 | 10 | 10 | 10 | 10 | 10 | 10 | 10 | 10 | 10 | 10 | 10 | 10 | 10 | 10 | 10 |
| Houston Pilots F - 63/64 | 10 | 10 | 10 | 10 | 10 | 10 | 10 | 10 | 10 | 10 | 10 | 10 | 10 | 10 | 10 | 10 | 10 | 10 | 10 | 10 | 10 | 10 | 10 | 10 |
| Houston Pilots E - 51/52 | 10 | 10 | 10 | 10 | 10 | 10 | 10 | 10 | 10 | 10 | 10 | 10 | 10 | 10 | 10 | 10 | 10 | 10 | 10 | 10 | 10 | 10 | 10 | 10 |
| Houston Pilots D - 37/38 | 10 | 10 | 10 | 10 | 10 | 10 | 10 | 10 | 10 | 10 | 10 | 10 | 10 | 10 | 10 | 10 | 10 | 10 | 10 | 10 | 10 | 10 | 10 | 10 |
| Houston Pilots C - 25/26 | 10 | 10 | 10 | 10 | 10 | 10 | 10 | 10 | 10 | 10 | 10 | 10 | 10 | 10 | 10 | 10 | 10 | 10 | 10 | 10 | 10 | 10 | 10 | 10 |
| Houston Pilots B - 11/12 | 10 | 10 | 10 | 10 | 10 | 10 | 10 | 10 | 10 | 10 | 10 | 10 | 10 | 10 | 10 | 10 | 10 | 10 | 10 | 10 | 10 | 10 | 10 | 10 |
| Houston Pilots A - 1 & 2 Bravo | 10 | 10 | 10 | 10 | 10 | 10 | 10 | 10 | 10 | 10 | 10 | 10 | 10 | 10 | 10 | 10 | 10 | 10 | 10 | 10 | 10 | 9 | 10 | 10 |

NOTE: This is automated data that may/may not agree with the official BAM thinking that's found on the daily slides or special visibility report slides. This data should be used as a guide only

Houston Pilots Wind Chart



Sustained Wind 10 Knots
Gusts 15 Knots
Wind from the SE



| Wind | Mon 3 pm | Mon 4 pm | Mon 5 pm | Mon 6 pm | Mon 7 pm | Mon 8 pm | Mon 9 pm | Mon 10 pm | Mon 11 pm | Tue 12 am | Tue 1 am | Tue 2 am | Tue 3 am | Tue 4 am | Tue 5 am | Tue 6 am | Tue 7 am | Tue 8 am | Tue 9 am | Tue 10 am | Tue 11 am | Tue 12 pm | Tue 1 pm | Tue 2 pm |
|--------------------------------------|---------------|---------------|---------------|---------------|---------------|---------------|---------------|---------------|---------------|---------------|---------------|---------------|---------------|---------------|--------------|--------------|--------------|--------------|--------------|--------------|--------------|--------------|--------------|--------------|
| Houston Pilots N - 610 Bridge | 9 18 ↑ | 9 18 ↑ | 9 18 ↑ | 9 18 ↑ | 9 18 ↑ | 9 17 ↑ | 8 15 ↑ | 8 15 ↑ | 7 14 ↑ | 6 12 ↑ | 6 10 ↑ | 5 9 ↑ | 3 8 ↑ | 3 7 ↑ | 3 7 ↑ | 3 6 ↑ | 3 6 ↑ | 2 5 ← | 2 4 ← | 3 6 ↑ | 3 7 → | 3 8 → | 5 10 → | 6 12 → |
| Houston Pilots M - Kinder 1 | 9 18 ↑ | 9 18 ↑ | 9 20 ↑ | 9 18 ↑ | 10 18 ↑ | 9 16 ↑ | 8 15 ↑ | 8 15 ↑ | 7 14 ↑ | 6 12 ↑ | 6 10 ↑ | 5 9 ↑ | 3 8 ↑ | 3 7 ↑ | 3 7 ↑ | 3 6 ↑ | 3 6 ↑ | 2 5 ← | 2 4 ← | 3 6 ↑ | 3 7 → | 5 8 → | 5 10 → | 6 12 → |
| Houston Pilots L - Greens Bayou | 9 18 ↑ | 9 20 ↑ | 9 20 ↑ | 9 18 ↑ | 10 18 ↑ | 9 17 ↑ | 8 15 ↑ | 7 14 ↑ | 6 14 ↑ | 6 12 ↑ | 5 9 ↑ | 5 8 ↑ | 3 7 ↑ | 3 7 ↑ | 3 7 ↑ | 3 6 ↑ | 2 5 ← | 2 4 ← | 2 3 ← | 3 6 ↑ | 3 7 → | 5 8 → | 5 10 → | 6 12 → |
| Houston Pilots K - Shell Crude | 10 18 ↑ | 10 20 ↑ | 10 20 ↑ | 10 20 ↑ | 10 18 ↑ | 9 17 ↑ | 8 15 ↑ | 7 15 ↑ | 6 14 ↑ | 6 12 ↑ | 5 10 ↑ | 5 9 ↑ | 3 8 ↑ | 3 7 ↑ | 3 7 ↑ | 3 6 ↑ | 2 5 ← | 2 4 ← | 2 3 ← | 3 6 ↑ | 3 7 → | 5 8 → | 6 10 → | 6 12 → |
| Houston Pilots J - Lynchburg Ferries | 10 18 ↑ | 10 20 ↑ | 10 20 ↑ | 10 20 ↑ | 10 18 ↑ | 9 17 ↑ | 8 15 ↑ | 7 14 ↑ | 6 13 ↑ | 6 10 ↑ | 5 9 ↑ | 3 8 ↑ | 3 7 ↑ | 3 7 ↑ | 3 7 ↑ | 2 5 ← | 2 4 ← | 2 3 ← | 2 2 ← | 2 3 ← | 3 6 ↑ | 5 8 → | 6 10 → | 6 12 → |
| Houston Pilots I - Exxon 3 | 12 20 ↑ | 13 21 ↑ | 14 21 ↑ | 14 21 ↑ | 13 21 ↑ | 14 20 ↑ | 13 17 ↑ | 10 16 ↑ | 10 15 ↑ | 9 14 ↑ | 8 13 ↑ | 8 10 ↑ | 7 9 ↑ | 6 8 ↑ | 6 8 ↑ | 6 8 ↑ | 5 7 ↑ | 5 7 ↑ | 5 7 ↑ | 5 7 ↑ | 5 8 ↑ | 6 9 ↑ | 6 12 ↑ | 7 13 ↑ |
| Houston Pilots H - Morgans Point | 13 20 ↑ | 13 21 ↑ | 14 22 ↑ | 14 22 ↑ | 14 21 ↑ | 14 20 ↑ | 13 18 ↑ | 12 17 ↑ | 10 15 ↑ | 9 14 ↑ | 8 13 ↑ | 8 12 ↑ | 7 10 ↑ | 6 9 ↑ | 6 9 ↑ | 6 8 ↑ | 5 7 ↑ | 5 7 ↑ | 5 7 ↑ | 5 7 ↑ | 5 8 ↑ | 6 9 ↑ | 6 12 ↑ | 7 13 ↑ |
| Houston Pilots G - 75/76 | 13 22 ↑ | 14 22 ↑ | 15 23 ↑ | 15 24 ↑ | 15 22 ↑ | 15 22 ↑ | 14 20 ↑ | 13 17 ↑ | 12 16 ↑ | 10 15 ↑ | 10 14 ↑ | 9 14 ↑ | 8 13 ↑ | 8 12 ↑ | 8 10 ↑ | 7 10 ↑ | 6 9 ↑ | 6 8 ↑ | 6 8 ↑ | 6 8 ↑ | 6 9 ↑ | 6 10 ↑ | 7 13 ↑ | 8 14 ↑ |
| Houston Pilots F - 63/64 | 13 22 ↑ | 14 22 ↑ | 15 23 ↑ | 15 24 ↑ | 15 22 ↑ | 14 21 ↑ | 14 20 ↑ | 13 17 ↑ | 12 16 ↑ | 10 15 ↑ | 10 15 ↑ | 9 14 ↑ | 8 13 ↑ | 8 12 ↑ | 8 10 ↑ | 7 10 ↑ | 6 9 ↑ | 6 8 ↑ | 6 8 ↑ | 6 8 ↑ | 6 9 ↑ | 6 10 ↑ | 7 13 ↑ | 8 14 ↑ |
| Houston Pilots E - 51/52 | 14 23 ↑ | 15 23 ↑ | 15 23 ↑ | 15 23 ↑ | 15 22 ↑ | 15 21 ↑ | 14 20 ↑ | 13 18 ↑ | 12 16 ↑ | 10 15 ↑ | 10 15 ↑ | 10 15 ↑ | 9 13 ↑ | 8 13 ↑ | 8 12 ↑ | 7 10 ↑ | 7 9 ↑ | 6 9 ↑ | 6 9 ↑ | 6 9 ↑ | 6 9 ↑ | 7 12 ↑ | 7 13 ↑ | 8 14 ↑ |
| Houston Pilots D - 37/38 | 14 23 ↑ | 15 23 ↑ | 15 23 ↑ | 15 23 ↑ | 15 22 ↑ | 14 21 ↑ | 14 20 ↑ | 13 17 ↑ | 12 16 ↑ | 10 15 ↑ | 10 15 ↑ | 10 15 ↑ | 9 14 ↑ | 8 13 ↑ | 8 13 ↑ | 7 12 ↑ | 7 10 ↑ | 6 9 ↑ | 6 9 ↑ | 6 9 ↑ | 6 9 ↑ | 7 12 ↑ | 8 13 ↑ | 8 14 ↑ |
| Houston Pilots C - 25/26 | 14 22 ↑ | 15 22 ↑ | 15 22 ↑ | 15 22 ↑ | 14 22 ↑ | 14 21 ↑ | 13 18 ↑ | 13 17 ↑ | 12 16 ↑ | 10 15 ↑ | 10 15 ↑ | 10 15 ↑ | 9 14 ↑ | 8 13 ↑ | 8 13 ↑ | 7 12 ↑ | 7 10 ↑ | 6 9 ↑ | 6 9 ↑ | 6 9 ↑ | 6 9 ↑ | 7 12 ↑ | 8 13 ↑ | 8 13 ↑ |
| Houston Pilots B - 11/12 | 14 21 ↑ | 14 22 ↑ | 14 22 ↑ | 14 21 ↑ | 13 21 ↑ | 13 20 ↑ | 12 18 ↑ | 10 17 ↑ | 10 16 ↑ | 10 15 ↑ | 9 15 ↑ | 8 15 ↑ | 8 14 ↑ | 8 13 ↑ | 8 13 ↑ | 7 12 ↑ | 6 10 ↑ | 6 9 ↑ | 6 9 ↑ | 6 9 ↑ | 6 9 ↑ | 7 12 ↑ | 7 12 ↑ | 8 13 ↑ |
| Houston Pilots A - 1 & 2 Bravo | 14 21 ↑ | 14 21 ↑ | 14 22 ↑ | 14 21 ↑ | 14 21 ↑ | 14 20 ↑ | 13 18 ↑ | 13 17 ↑ | 12 17 ↑ | 12 17 ↑ | 12 16 ↑ | 10 16 ↑ | 10 15 ↑ | 10 15 ↑ | 9 14 ↑ | 8 13 ↑ | 8 12 ↑ | 8 12 ↑ | 7 10 ↑ | 7 10 ↑ | 7 10 ↑ | 6 10 ↑ | 7 12 ↑ | 7 13 ↑ |

NOTE: This is automated data that may/may not agree with the official BAM thinking that's found on the daily slides.
This data should be used as a guide only.

Houston Pilots: MON. 6/9/2025

Forecast Discussion

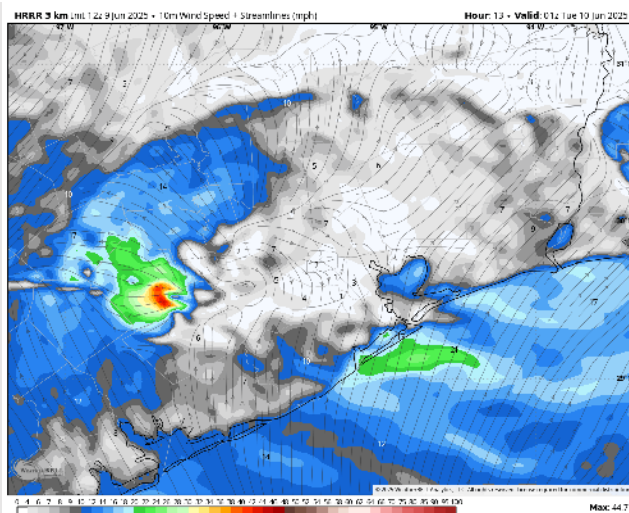
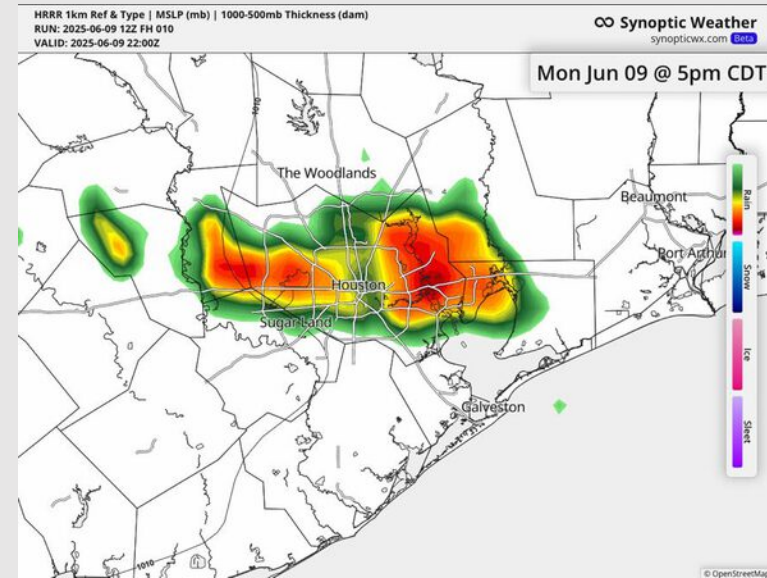
Precip: Another round of showers/storms is favored from 4PM to 10PM. **Lightning, wind gusts of 35-50+ kts, large hail, and an isolated tornado** will all be possible within storms.

Wind: Winds will be out of the S/SW for the rest of the day, becoming variable at times. **N of Morgan's Point:** Winds will be at 5 – 10 kts the rest of the day. **S of Morgan's Point:** Winds will be at 12 – 17 kts for the remainder of the PM. **Non-thunderstorm wind gusts of 20 – 25 kts will be possible for all Stations the rest of the day.**

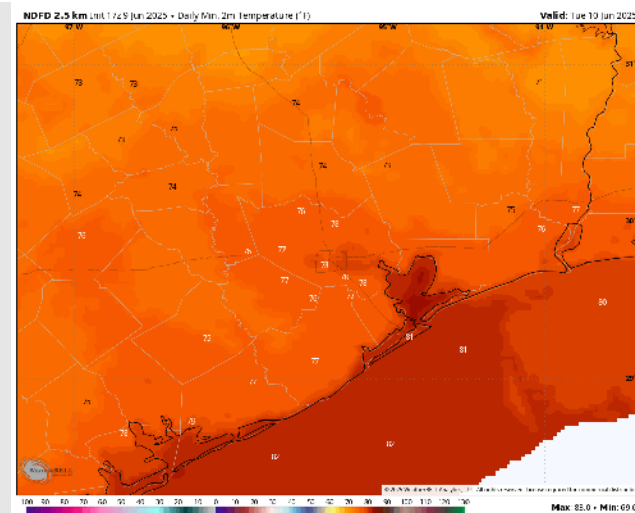
Low Temps: **N of Morgan's Point:** Upper 70s F. **S of Morgan's Point:** Low 80s F.

Visibility: No fog concerns today, however, visibility may be reduced under heavy downpours.

Precip Image: 5 PM CT



Wind Speed:
8 PM CT



Low Temps
TUE AM

Houston Pilots: TUE. 6/10/2025

Forecast Discussion

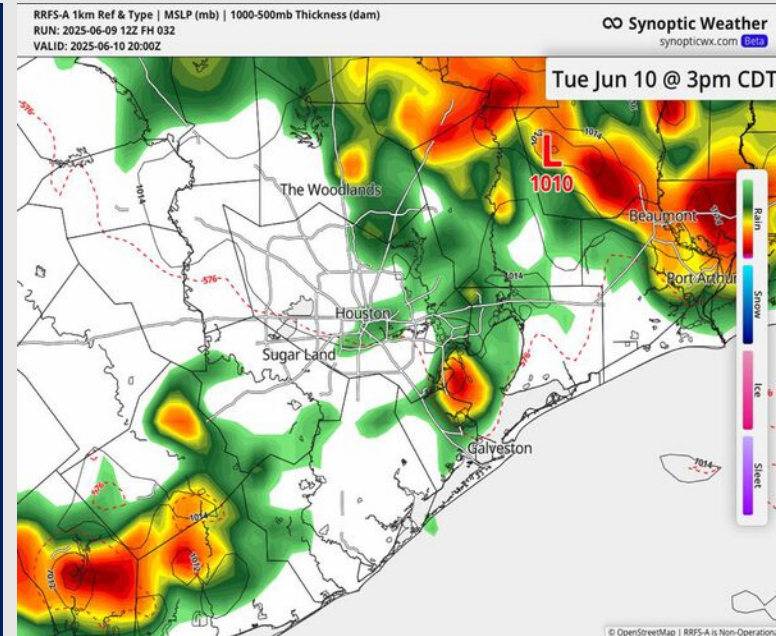
Precip: Favoring scattered showers and storms in play for all Stations from 12 PM to 8 PM. **Some storms can potentially become severe, with lightning, large hail and wind gusts of 35-50 kts in play.**

Wind: Winds will generally be out of the S through Tuesday. **N of Morgan's Point:** Winds will be at 3 – 8 kts. **S of Morgan's Point:** Winds will be at 5 – 10 kts, increasing to 10 – 15 kts after 1PM.

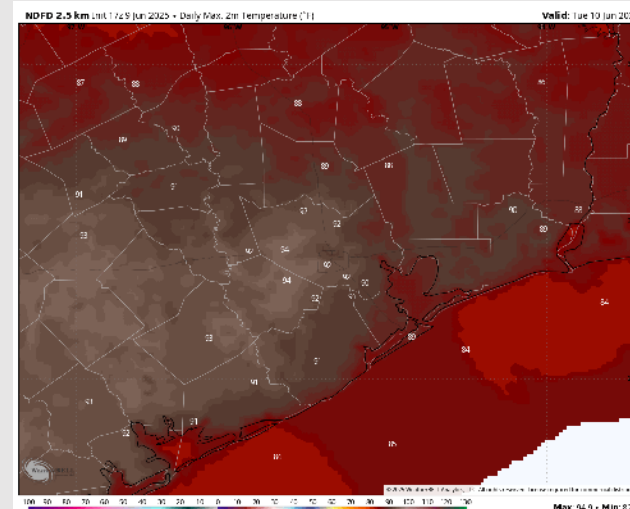
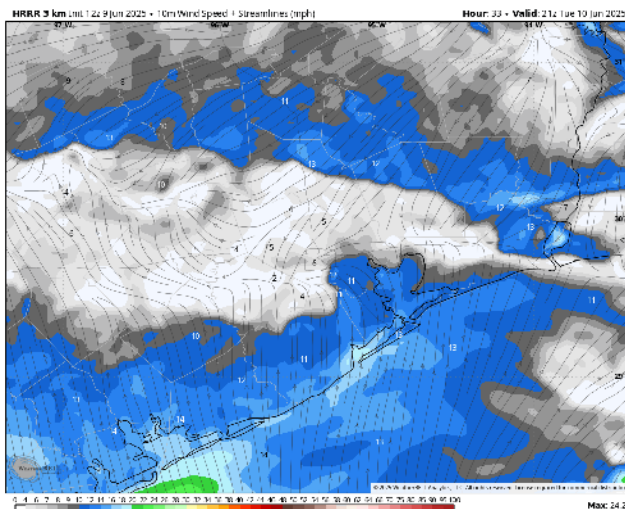
High Temps: **N of Morgan's Point:** Low 90s F. **S of Morgan's Point:** Upper 80s F.

Visibility: No fog concerns for Tuesday, however visibilities may be reduced under heavy downpours.

Precip Image: 3 PM CT



Wind Speed:
4 PM CT



High Temps
Tuesday

Houston Pilots: WED. 6/11/2025

Forecast Discussion

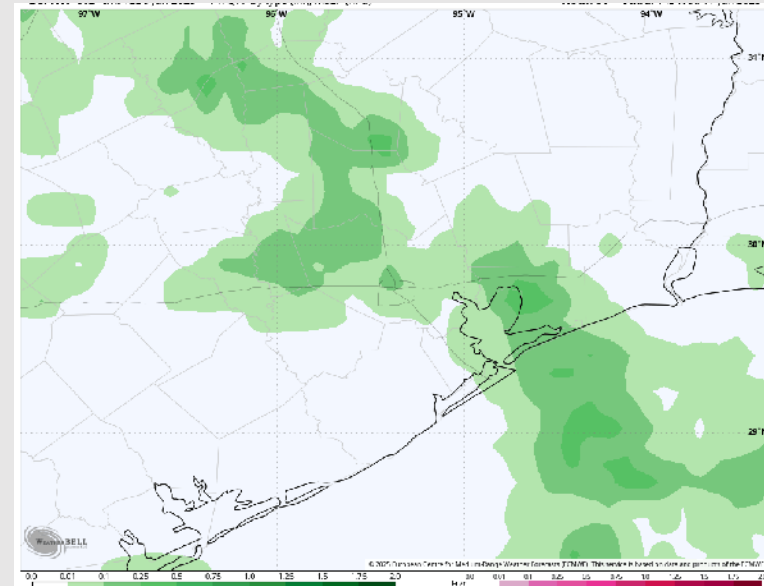
Precip: Scattered showers and storms in play for all Stations between 4AM and 3 PM. **Some storms can potentially become severe, with lightning, large hail and wind gusts of 35-50 kts in play.**

Wind: Winds will be out of the SSE. **N of Morgan's Point:** Winds will be at 3 – 8 kts. **S of Morgan's Point:** Winds will be at 5 – 10 kts throughout the day. **Non-thunderstorm wind gusts of 20 kts will be possible for all stations after 12 PM.**

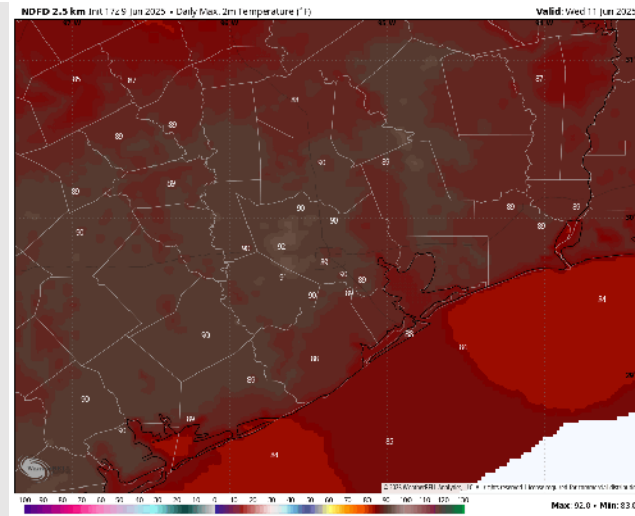
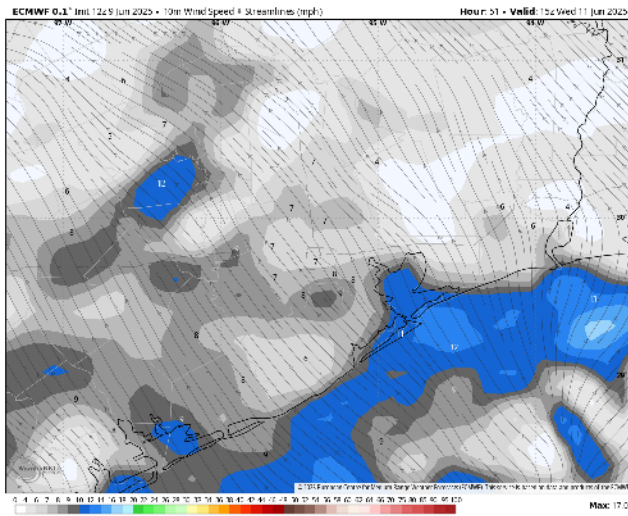
High Temps: **N of Morgan's Point:** Near 90 F. **S of Morgan's Point:** High 80s F.

Visibility: No fog concerns for Wednesday, however visibilities may be reduced under heavy downpours.

Precip Image: 9 AM CT



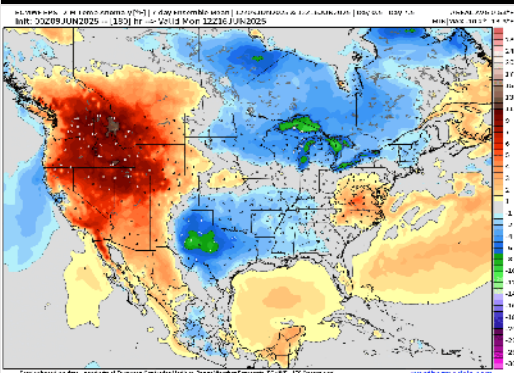
Wind Speed
10 AM CT



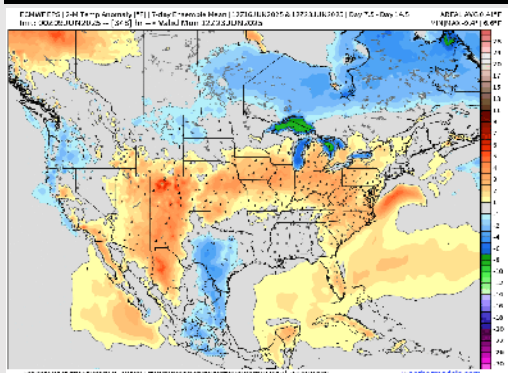
High Temps
Wednesday

Houston Pilots: 6/9/25

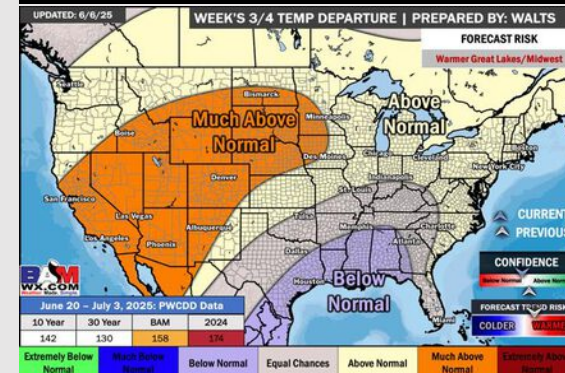
Next 7 Day Temperature Departure



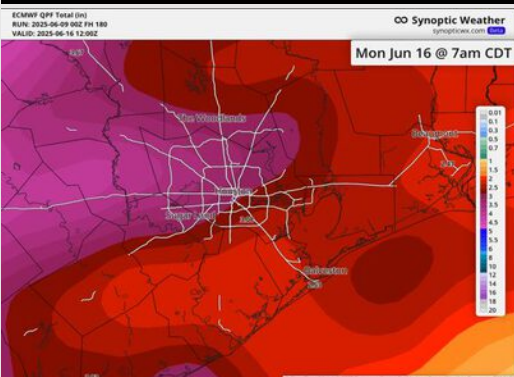
8-14 Day Temperature Departure



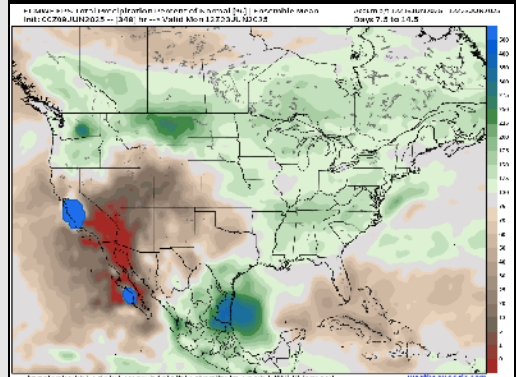
15-30 Day Temperature Departure



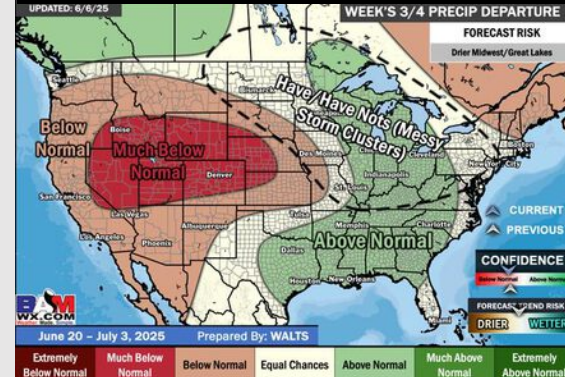
Next 7 Day Total Precipitation



8-14 Day % of Average Precip.



15-30 Day % of Average Precip.



- Temps are expected to be slightly below normal the next 7 days. Scattered rain chances expected, with heavier/widespread rain chances mid-week and into the weekend.
- Near to slightly below normal temps and near to above normal rainfall is favored for days 8 – 14.
- Below normal temperatures are favored late June into early July along with above normal rainfall chances.