

# Houston Pilots Forecast Package

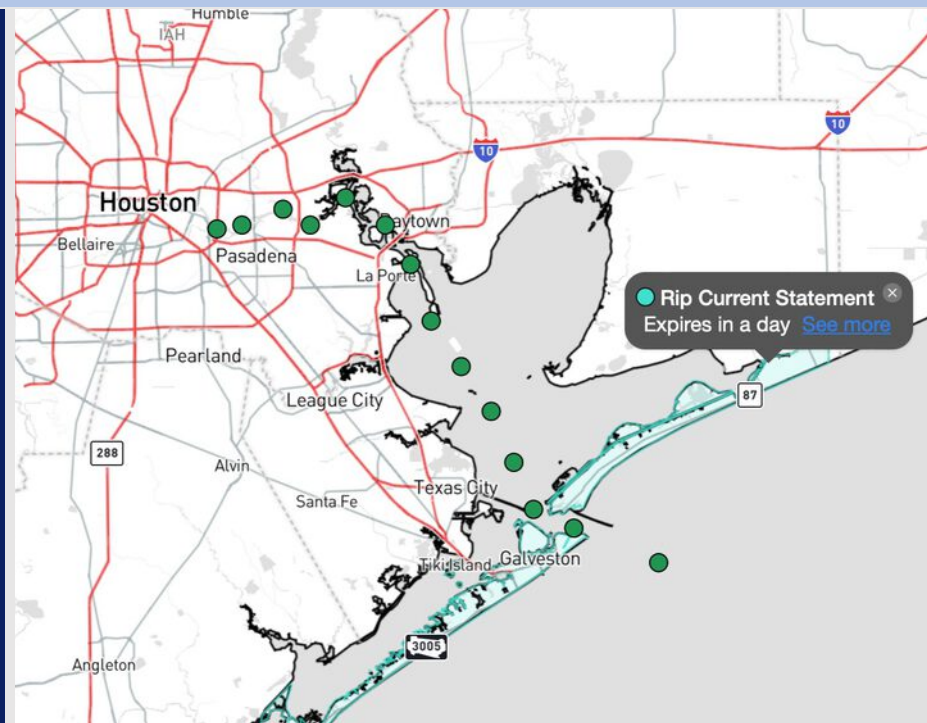


Updated: 9:15 PM CT  
Sunday, June 8, 2025

Forecaster: Tyler Riggles

## Weather Headlines

- Wave heights at the Boarding Station are expected to increase to 3 – 4' through TUE.
- **Non-thunderstorm wind gusts of 20 – 25 kts will be possible for all stations today and Wednesday.**
- **Strong to severe storms will be possible through Wednesday.**



Current Radar: 9:11 PM CT

As always, please do not hesitate to reach out to us with any forecast questions at (317)-560-8122. Press 1 for forecast questions.

You can also access real-time forecast updates and 24/7 meteorological chat assistance on your [Clarity](#) app. Click [here](#) for login assistance.



# Houston Pilots Visibility Chart (miles)



## Forecast Confidence

Above  
Normal

Below  
Normal

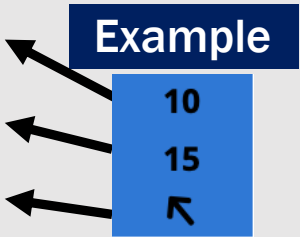
Visibility	Sun 11 pm	Mon 12 am	Mon 1 am	Mon 2 am	Mon 3 am	Mon 4 am	Mon 5 am	Mon 6 am	Mon 7 am	Mon 8 am	Mon 9 am	Mon 10 am	Mon 11 am	Mon 12 pm	Mon 1 pm	Mon 2 pm	Mon 3 pm	Mon 4 pm	Mon 5 pm	Mon 6 pm	Mon 7 pm	Mon 8 pm	Mon 9 pm	Mon 10 pm
Houston Pilots N - 610 Bridge	10	10	10	10	10	10	10	10	10	9	10	10	10	10	10	10	10	10	10	10	10	10	10	10
Houston Pilots M - Kinder 1	10	10	10	10	10	10	10	10	10	9	10	10	10	10	10	10	10	10	10	10	10	10	10	10
Houston Pilots L - Greens Bayou	10	10	10	10	10	10	10	10	10	6.9	10	10	10	10	10	10	10	10	10	10	10	10	10	10
Houston Pilots K - Shell Crude	10	10	10	10	10	10	10	10	10	6.9	10	10	10	10	10	10	10	10	10	10	10	10	10	10
Houston Pilots J - Lynchburg Ferries	10	10	10	10	10	10	10	10	10	6.9	10	10	10	10	10	10	10	10	10	10	10	10	10	10
Houston Pilots I - Exxon 3	10	10	10	10	10	10	10	10	10	6.9	10	10	10	10	10	10	10	10	10	10	10	10	10	10
Houston Pilots H - Morgans Point	10	10	10	10	10	10	10	10	10	6.9	10	10	10	10	10	10	10	10	10	10	10	10	10	10
Houston Pilots G - 75/76	10	10	10	10	10	10	10	10	10	6.9	10	10	10	10	10	10	10	10	10	10	10	10	10	10
Houston Pilots F - 63/64	10	10	10	10	10	10	10	10	10	6.9	10	10	10	10	10	10	10	10	10	10	10	10	10	10
Houston Pilots E - 51/52	10	10	10	10	10	10	10	10	10	6.9	10	10	10	10	10	10	10	10	10	10	10	10	10	10
Houston Pilots D - 37/38	10	10	10	10	10	10	10	10	10	7.9	10	10	10	10	10	10	10	10	10	10	10	10	10	10
Houston Pilots C - 25/26	10	10	10	10	10	10	10	10	10	9	10	10	10	10	10	10	10	10	10	10	10	10	10	10
Houston Pilots B - 11/12	10	10	10	10	10	10	10	10	10	9	10	10	10	10	10	10	10	10	10	10	10	10	10	10
Houston Pilots A - 1 & 2 Bravo	10	10	10	10	10	10	10	10	10	9	10	10	10	10	10	10	10	10	10	9	7.9	7.9	10	10

NOTE: This is automated data that may/may not agree with the official BAM thinking that's found on the daily slides or special visibility report slides. This data should be used as a guide only

# Houston Pilots Wind Chart



Sustained Wind 10 Knots  
Gusts 15 Knots  
Wind from the SE



Wind	Sun 11 pm	Mon 12 am	Mon 1 am	Mon 2 am	Mon 3 am	Mon 4 am	Mon 5 am	Mon 6 am	Mon 7 am	Mon 8 am	Mon 9 am	Mon 10 am	Mon 11 am	Mon 12 pm	Mon 1 pm	Mon 2 pm	Mon 3 pm	Mon 4 pm	Mon 5 pm	Mon 6 pm	Mon 7 pm	Mon 8 pm	Mon 9 pm	Mon 10 pm
Houston Pilots N - 610 Bridge	10 21 ↑	10 20 ↑	8 17 ↑	8 17 ↑	8 15 ↑	7 15 ↑	6 15 ↑	6 14 →	6 13 →	6 12 ↓	6 13 ↖	6 13 ↗	7 14 ↗	8 15 ↗	8 16 ↗	8 17 ↗	8 17 ↗	9 18 ↗	9 18 ↗	9 18 ↗	9 18 ↑	9 17 ↑	8 16 ↖	8 15 ↖
Houston Pilots M - Kinder 1	10 21 ↑	9 20 ↑	8 17 ↑	8 17 ↑	8 15 ↑	7 15 ↑	6 15 ↗	6 14 ↗	6 13 ↘	6 12 ↓	6 13 ↖	6 13 ↗	7 14 ↗	8 15 ↗	8 16 ↗	8 17 ↗	8 17 ↗	9 18 ↗	9 18 ↗	9 18 ↗	10 18 ↑	9 17 ↑	8 16 ↖	8 15 ↖
Houston Pilots L - Greens Bayou	10 20 ↑	9 18 ↑	8 17 ↑	8 16 ↑	8 15 ↑	7 15 ↑	7 14 ↗	6 13 ↗	6 13 ↘	6 12 ↓	6 12 ↖	6 13 ↗	7 14 ↗	8 15 ↗	8 16 ↗	8 17 ↗	9 17 ↗	9 18 ↗	9 18 ↗	9 18 ↑	9 18 ↑	9 17 ↑	8 16 ↖	7 15 ↖
Houston Pilots K - Shell Crude	10 20 ↑	9 18 ↑	8 17 ↑	8 16 ↑	8 15 ↑	7 15 ↑	7 14 ↗	6 13 ↗	6 13 ↘	6 12 ↓	6 13 ↖	6 13 ↗	7 14 ↗	8 15 ↗	8 16 ↗	8 17 ↗	9 17 ↗	9 18 ↗	9 18 ↗	10 18 ↑	10 18 ↑	9 17 ↑	8 16 ↖	7 15 ↖
Houston Pilots J - Lynchburg Ferries	10 20 ↑	9 18 ↑	8 17 ↑	8 16 ↑	8 15 ↑	7 15 ↑	7 14 ↗	6 13 ↗	6 12 ↘	6 12 ↓	6 12 ↖	6 12 ↗	7 14 ↗	8 15 ↗	8 16 ↗	8 17 ↗	9 17 ↗	9 18 ↗	9 18 ↗	10 18 ↑	10 18 ↑	9 17 ↑	8 16 ↖	7 14 ↖
Houston Pilots I - Exxon 3	15 22 ↑	14 21 ↑	13 20 ↑	13 18 ↑	12 17 ↑	10 16 ↑	10 15 ↗	10 15 ↗	9 15 ↘	9 14 ↓	8 14 ↖	8 14 ↗	9 15 ↗	9 16 ↗	10 17 ↗	10 18 ↗	12 18 ↗	12 20 ↗	13 21 ↑	13 21 ↑	13 21 ↑	13 20 ↑	13 17 ↖	10 16 ↖
Houston Pilots H - Morgans Point	15 22 ↑	14 21 ↑	13 20 ↑	13 18 ↑	13 17 ↑	12 17 ↑	10 16 ↗	10 15 ↗	9 15 ↘	9 15 ↓	9 15 ↖	9 15 ↗	9 15 ↗	10 16 ↗	10 17 ↗	10 18 ↗	12 20 ↗	13 20 ↗	14 21 ↑	13 21 ↑	13 21 ↑	13 20 ↑	13 18 ↖	12 16 ↖
Houston Pilots G - 75/76	16 23 ↑	15 22 ↑	15 22 ↑	15 21 ↑	14 20 ↑	13 20 ↑	13 18 ↗	13 17 ↗	12 17 ↘	10 16 ↘	10 16 ↖	10 16 ↗	10 16 ↗	10 18 ↗	12 20 ↗	13 21 ↑	13 22 ↑	14 22 ↑	14 22 ↑	15 22 ↑	15 22 ↑	15 21 ↑	14 20 ↑	13 17 ↖
Houston Pilots F - 63/64	15 23 ↑	15 22 ↑	15 22 ↑	15 21 ↑	14 21 ↑	14 20 ↑	13 18 ↗	13 18 ↗	13 17 ↘	12 16 ↘	10 16 ↖	10 16 ↗	10 17 ↗	10 18 ↗	12 20 ↗	13 21 ↑	13 22 ↑	14 22 ↑	14 23 ↑	15 22 ↑	15 22 ↑	15 21 ↑	14 20 ↑	13 17 ↖
Houston Pilots E - 51/52	16 23 ↑	16 23 ↑	15 23 ↑	15 22 ↑	15 22 ↑	15 21 ↑	14 21 ↑	14 20 ↑	13 18 ↘	13 17 ↘	13 17 ↖	12 17 ↖	12 17 ↗	13 20 ↗	13 20 ↗	13 22 ↑	14 22 ↑	14 23 ↑	14 23 ↑	15 22 ↑	15 22 ↑	15 21 ↑	14 20 ↑	13 17 ↖
Houston Pilots D - 37/38	15 23 ↑	16 23 ↑	16 23 ↑	15 22 ↑	15 22 ↑	15 22 ↑	15 21 ↑	14 20 ↑	13 18 ↘	13 17 ↘	13 17 ↖	12 17 ↖	12 17 ↗	13 20 ↗	13 20 ↗	13 21 ↑	13 22 ↑	14 22 ↑	14 22 ↑	14 22 ↑	14 21 ↑	14 20 ↑	13 18 ↖	13 17 ↖
Houston Pilots C - 25/26	15 22 ↑	15 22 ↑	15 22 ↑	15 22 ↑	15 22 ↑	15 22 ↑	15 21 ↑	14 20 ↑	13 20 ↑	13 19 ↘	13 18 ↖	12 17 ↖	12 17 ↗	13 20 ↗	13 20 ↗	13 21 ↑	13 21 ↑	14 21 ↑	14 22 ↑	14 22 ↑	14 21 ↑	13 20 ↑	13 18 ↖	12 17 ↖
Houston Pilots B - 11/12	14 21 ↑	14 22 ↑	14 21 ↑	14 21 ↑	14 21 ↑	13 21 ↑	13 21 ↑	13 20 ↑	13 18 ↘	12 18 ↖	12 17 ↖	10 17 ↖	10 17 ↗	12 18 ↗	13 20 ↗	13 20 ↗	13 20 ↗	14 20 ↗	14 21 ↑	14 20 ↑	13 20 ↑	13 20 ↑	12 18 ↖	12 17 ↖
Houston Pilots A - 1 & 2 Bravo	16 23 ↑	16 23 ↑	16 24 ↑	16 24 ↑	16 24 ↑	16 24 ↑	16 23 ↑	15 22 ↑	15 21 ↑	14 20 ↑	13 20 ↖	13 18 ↖	13 17 ↖	13 18 ↗	13 18 ↗	13 18 ↗	13 18 ↗	13 18 ↗	14 20 ↗	14 20 ↗	13 20 ↗	13 20 ↑	13 18 ↖	13 17 ↖

NOTE: This is automated data that may/may not agree with the official BAM thinking that's found on the daily slides.  
This data should be used as a guide only.

# Houston Pilots: MON. 6/9/2025

## Forecast Discussion

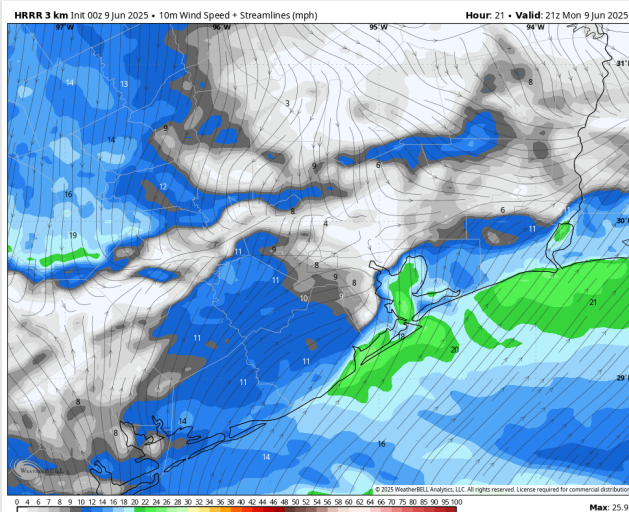
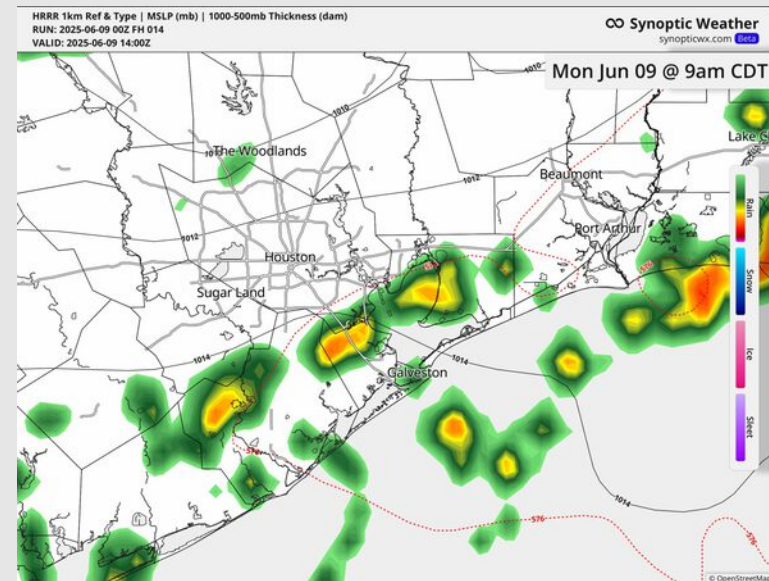
**Precip:** Scattered showers/storms will be possible from 6AM to 10AM across all Stations. Another round of showers/storms is favored from 5PM to 10PM. **Lightning and wind gusts of 30-40kts will be possible within storms.**

**Wind:** Winds will be variable from 4AM to 10AM before settling out of the S/SW. **N of Morgan's Point:** Winds will be at 5 – 10 kts. **S of Morgan's Point:** Winds will be at 12 – 17 kts throughout the day. **Wind gusts of 20 – 25 kts will be possible for all Stations throughout the day.**

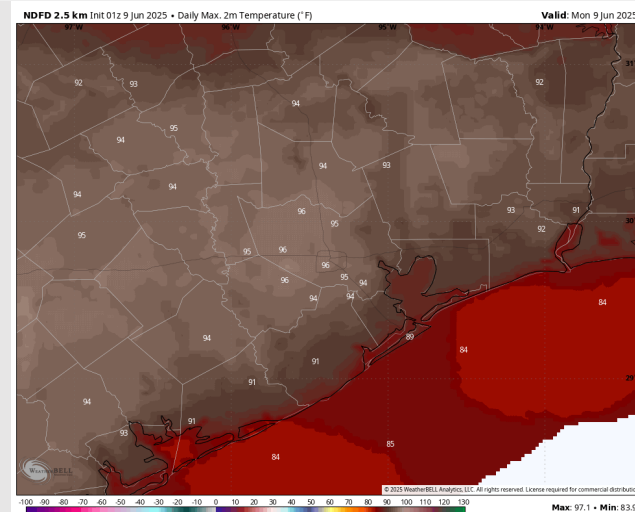
**High Temps:** **N of Morgan's Point:** Mid 90s F. **S of Morgan's Point:** Upper 80s F.

**Visibility:** No fog concerns today, however, visibility may be reduced under heavy downpours.

## Precip Image: 9 AM CT



Wind Speed:  
4 PM CT



High Temps  
Today



# Houston Pilots: TUE. 6/10/2025

## Forecast Discussion

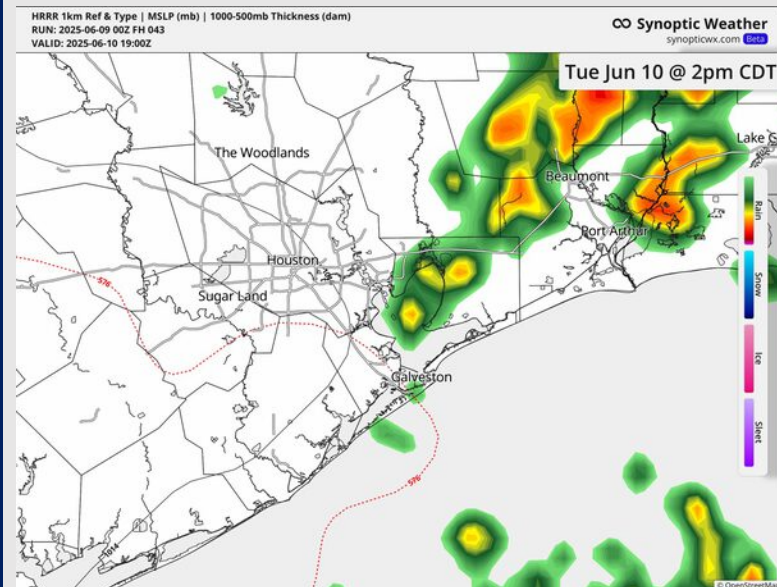
**Precip:** Favoring scattered showers and storms in play for all Stations from 10 AM to 4 PM. **Some storms can potentially become severe, with lightning, large hail and wind gusts of 35-50 kts in play.**

**Wind:** Winds will generally be out of the S through Tuesday but will become variable between 12 – 5 PM. **N of Morgan's Point:** Winds will be at 3 – 8 kts. **S of Morgan's Point:** Winds will be at 5 – 10 kts.

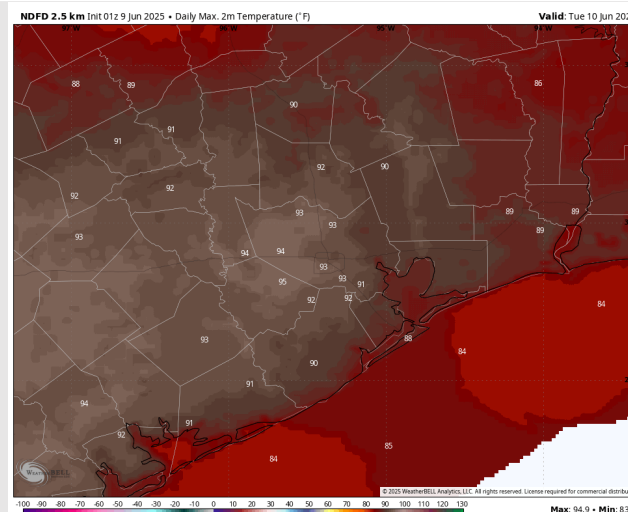
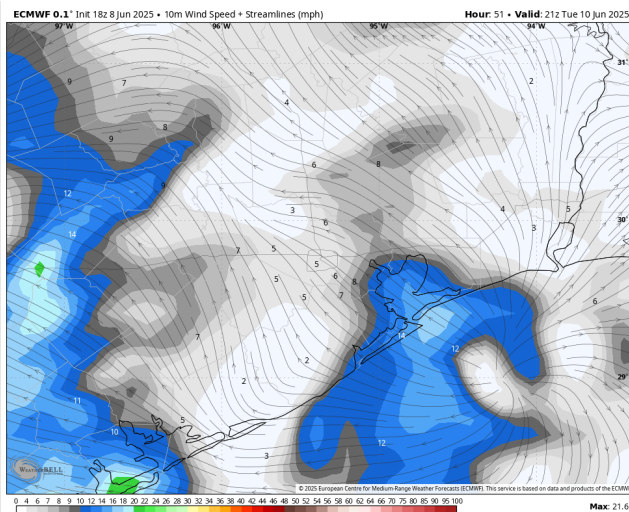
**High Temps:** **N of Morgan's Point:** Low 90s F. **S of Morgan's Point:** Upper 80s F.

**Visibility:** No fog concerns for Tuesday, however visibilities may be reduced under heavy downpours.

## Precip Image: 2 PM CT



**Wind Speed:  
4 PM CT**



**High Temps  
Tuesday**

# Houston Pilots: WED. 6/11/2025

## Forecast Discussion

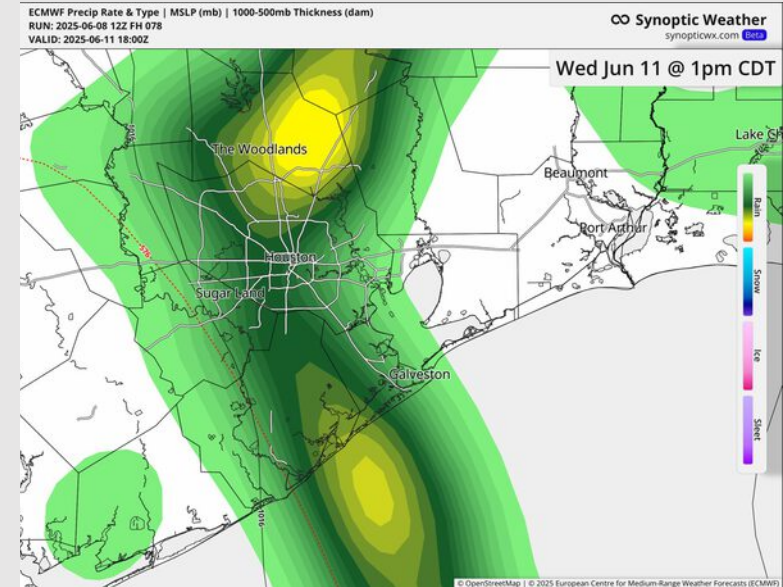
**Precip:** Scattered showers and storms in play for all Stations between 2 AM and 7 PM. **Some storms can potentially become severe, with lightning, large hail and wind gusts of 35-50 kts in play.**

**Wind:** Winds will be out of the SE. **N of Morgan's Point:** Winds will be at 4 – 9 kts. **S of Morgan's Point:** Winds will be at 8 – 13 kts throughout the remainder of the day. **Non-thunderstorm wind gusts of 20 kts will be possible for all stations after 12 PM.**

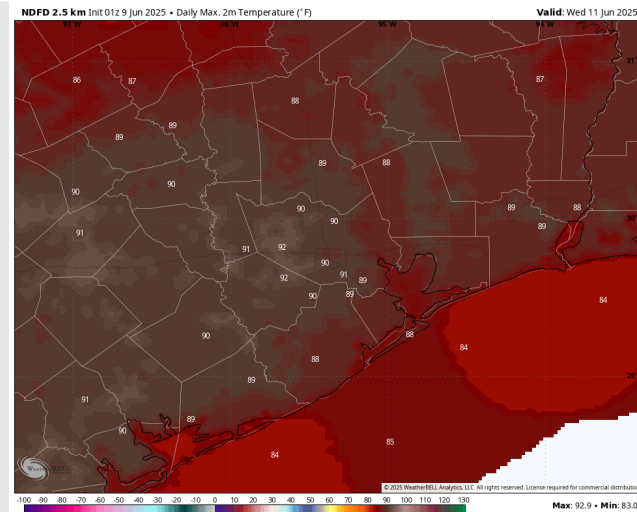
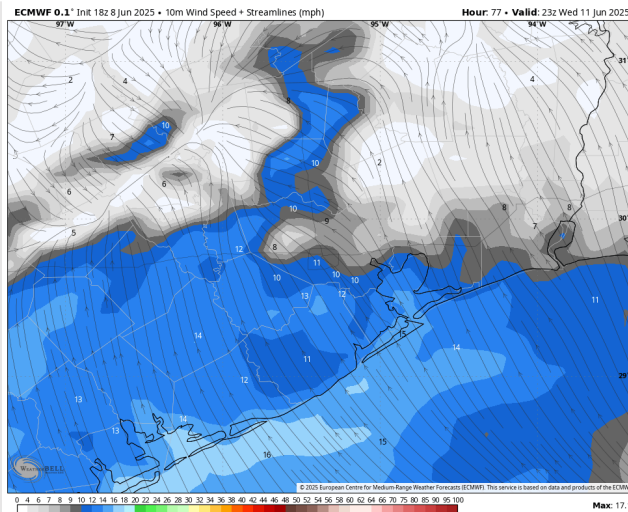
**High Temps:** **N of Morgan's Point:** Near 90 F. **S of Morgan's Point:** High 80s F.

**Visibility:** No fog concerns for Wednesday, however visibilities may be reduced under heavy downpours.

## Precip Image: 1 PM CT



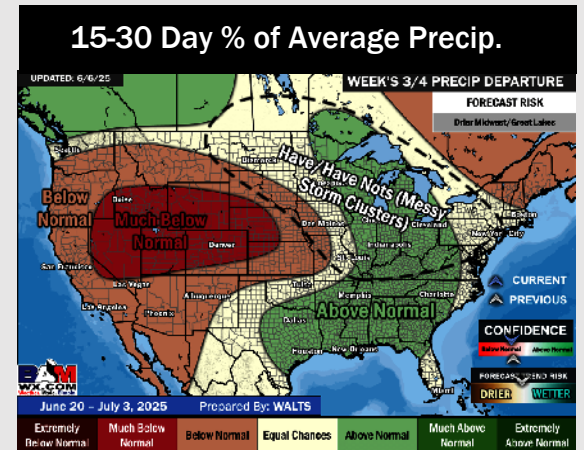
Wind Speed  
6 PM CT



High Temps  
Wednesday



## The image contains two logos. On the left is the logo for BAM WX.COM, featuring the letters 'BAM' in a stylized font with a black and white swirl, followed by 'WX.COM' in bold black letters, and the tagline 'Weather. Made. Simple.' in blue and red. On the right is the logo for Houston Pilots, featuring a large red 'H' with the text 'Houston Pilots' in a serif font to its right.



- Temps are expected to be slightly below normal the next 7 days. Scattered rain chances expected, with heavier/widespread rain chances mid-week.
- Near to slightly below normal temps and near to slightly above normal rainfall is favored for days 8 – 14.
- Below normal temperatures are favored late June into early July along with above normal rainfall chances.