

Houston Pilots Forecast Package

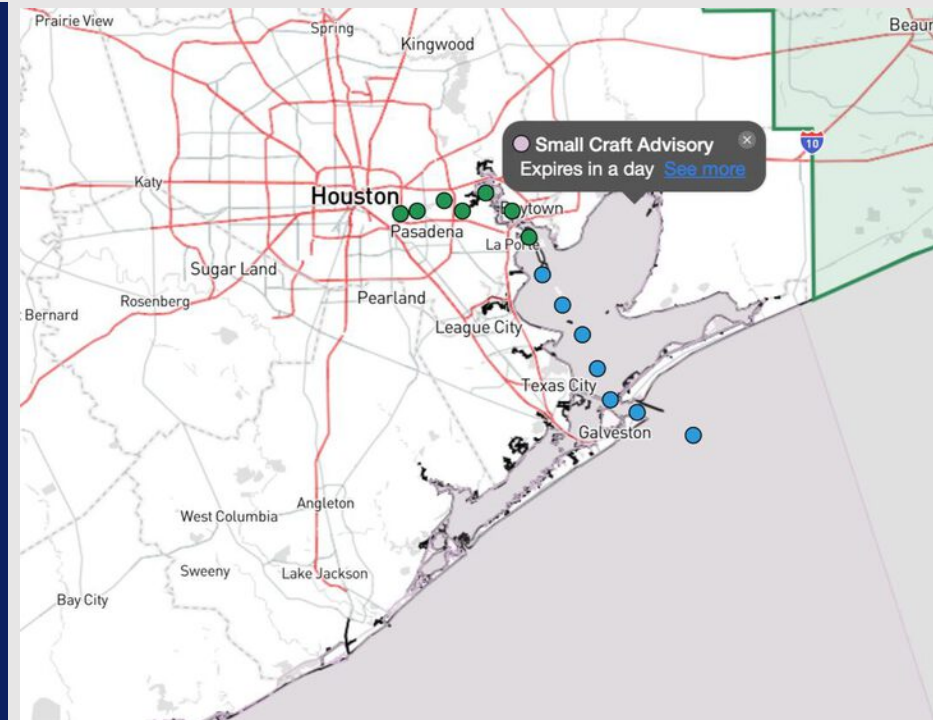


Updated: 1:30 PM CT
Monday, May 5, 2025

Forecaster: Hope Kleitsch

Weather Headlines

- Non-thunderstorm wind gusts of 20 - 30 kts possible for all stations at times over the next 48 hours.
- **Severe storms in play for all Stations on Tuesday. Main risks expected to be lightning, 35 – 50 kt gusts, hail, and an isolated tornado.**
- **Yankee Port Conditions are in effect due to wave heights reaching 6' at the Boarding Station by 7AM TUE.**



Current Radar: 1:20 PM CT

As always, please do not hesitate to reach out to us with any forecast questions at **(317)-560-8122**. Press **1** for forecast questions.

You can also access real-time forecast updates and 24/7 meteorological chat assistance on your **Clarity** app. Click [here](#) for login assistance.



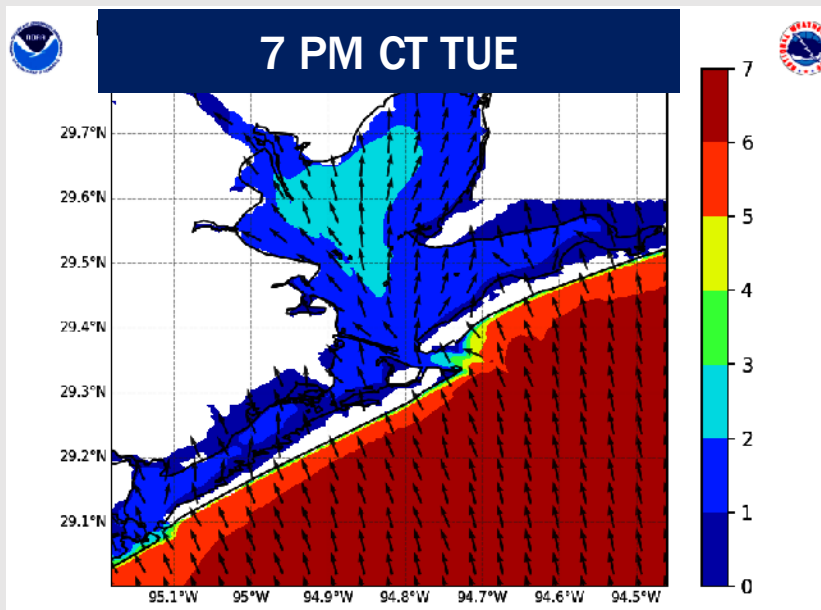
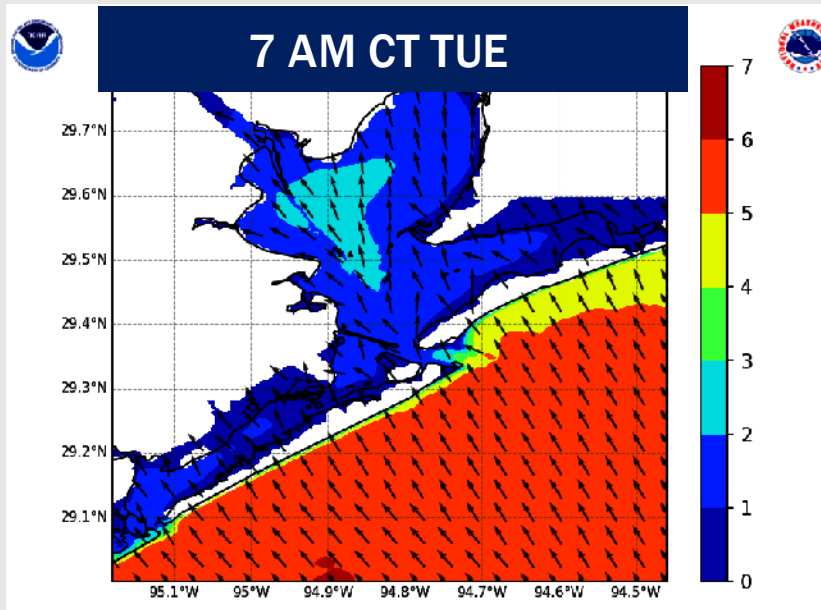
Houston Pilots Port Trigger Update

Port Condition	34 KTS+ Sustained Wind Trigger Reached at:	6 Foot Wave Trigger Reached at:	Time Remaining/Trigger Ends At:
Victor	---	---	---
Whiskey	---	---	---
X-Ray	---	---	---
Yankee	---	CURRENT	7 PM MON
Zulu	---	7 PM MON	4 AM WED

Port Condition	Trigger Definition	Trigger Reached?
Victor	Hurricane entering/developing in Gulf of Mexico that's a threat to the area	N/A
Whiskey	72 hours prior to predicted sustained winds of 34+ KTS	N/A
X-Ray	48 hours prior to predicted sustained winds of 34+ KTS or 6' wave height	PAST
Yankee	24 hours prior to predicted sustained winds of 34+ KTS or 6' wave height	YES
Zulu	12 hours prior to predicted sustained winds of 34+ KTS or 6' wave height	NO

NOTES:
 Due to elevated winds and strong gusts today and Tuesday, max wave heights are expected to increase to 6' for the Boarding Station by 7AM on Tuesday. 6' wave heights are expected to persist through 4 AM Wednesday. Wave heights expected to drop below 5' after 1 PM on Wednesday.

Wave Height Forecast Update



Due to elevated winds and strong gusts today and Tuesday, max wave heights are expected to increase to 6' for the Boarding Station by 7 AM on Tuesday.

A few wave heights up to 7' will be possible from 12PM TUE to 12AM WED.

6' wave heights are expected to persist through 4 AM Wednesday. Wave heights expected to drop below 5' after 1 PM on Wednesday.

Houston Pilots Visibility Chart (miles)



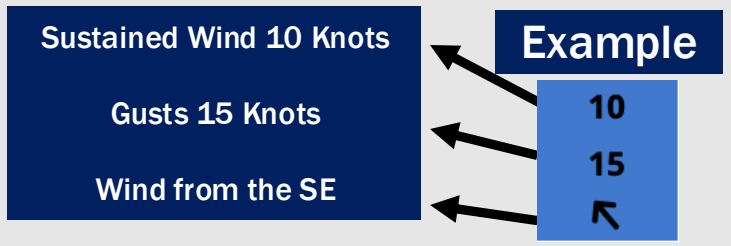
Forecast Confidence



Visibility	Mon 3 pm	Mon 4 pm	Mon 5 pm	Mon 6 pm	Mon 7 pm	Mon 8 pm	Mon 9 pm	Mon 10 pm	Mon 11 pm	Tue 12 am	Tue 1 am	Tue 2 am	Tue 3 am	Tue 4 am	Tue 5 am	Tue 6 am	Tue 7 am	Tue 8 am	Tue 9 am	Tue 10 am	Tue 11 am	Tue 12 pm	Tue 1 pm	Tue 2 pm
Houston Pilots N - 610 Bridge	10	3.9	3.9	4.9	5.9	5.9	5.9	4.9	6.9	7.9	9	9	9	7.9	9	7.9	7.9	6.9	4.9	4.9	6.9	7.9	9	9
Houston Pilots M - Kinder 1	10	10	3.9	4.9	5.9	5.9	6.9	5.9	6.9	7.9	9	10	9	7.9	9	7.9	7.9	6.9	4.9	4.9	6.9	7.9	9	9
Houston Pilots L - Greens Bayou	10	10	3.9	4.9	5.9	6.9	6.9	6.9	6.9	9	10	10	9	7.9	9	7.9	7.9	6.9	4.9	4.9	6.9	6.9	9	9
Houston Pilots K - Shell Crude	10	10	3.9	4.9	5.9	6.9	6.9	6.9	6.9	9	10	10	9	7.9	9	7.9	7.9	6.9	4.9	4.9	6.9	6.9	9	9
Houston Pilots J - Lynchburg Ferries	10	9	3.9	4.9	4.9	6.9	6.9	6.9	6.9	9	10	10	9	7.9	9	7.9	7.9	6.9	4.9	4.9	6.9	6.9	8	9
Houston Pilots I - Exxon 3	10	9	3.9	4.9	4.9	6.9	6.9	6.9	6.9	9	10	10	9	7.9	9	7.9	7.9	6.9	4.9	4.9	6.9	6.9	8	9
Houston Pilots H - Morgans Point	10	10	3.9	4.9	4.9	6.9	6.9	6.9	6.9	9	10	10	9	7.9	9	7.9	7.9	6.9	4.9	4.9	6.9	6.9	8	8
Houston Pilots G - 75/76	10	10	3	4.9	4.9	6.9	6.9	6.9	6.9	6.9	6.9	6.9	6.9	6.9	6.9	7.9	7.9	6.9	4.9	4.9	6.9	6.9	9	9
Houston Pilots F - 63/64	10	10	3	3.9	4.9	6.9	6.9	6.9	6.9	6.9	6.9	6.9	6.9	6.9	6.9	7.9	7.9	6.9	4.9	4.9	6.9	6.9	9	9
Houston Pilots E - 51/52	10	10	3.9	3	4.9	6.9	6.9	6.9	6.9	6.9	6.9	6.9	6.9	6.9	6.9	6.9	7.9	6.9	4.9	4.9	6.9	6.9	9	8
Houston Pilots D - 37/38	10	10	6.9	3	4.9	5.9	6.9	6.9	6.9	6.9	6.9	6.9	6.9	6.9	6.9	6.9	7.9	6.9	4.9	4.9	6.9	6.9	9	8
Houston Pilots C - 25/26	9	10	6.9	3	4.9	5.9	6.9	6.9	6.9	6.9	6.9	6.9	6.9	6.9	7.9	7.9	7.9	6.9	4.9	4.9	6.9	6.9	9	8
Houston Pilots B - 11/12	6.9	10	6.9	3	4.9	4.9	6.9	6.9	6.9	6.9	6.9	6.9	6.9	5.9	6.9	6.9	6.9	6.9	4.9	4.9	6.9	6.9	8	8
Houston Pilots A - 1 & 2 Bravo	9	7.9	6.9	3.9	3	4.9	6.9	6.9	6.9	6.9	6.9	5.9	5.9	4.9	5.9	6.9	6.9	5.9	3.9	4.9	5.9	5.9	8	8

NOTE: This is automated data that may/may not agree with the official BAM thinking that's found on the daily slides or special visibility report slides. This data should be used as a guide only

Houston Pilots Wind Chart



Wind	Mon 3 pm	Mon 4 pm	Mon 5 pm	Mon 6 pm	Mon 7 pm	Mon 8 pm	Mon 9 pm	Mon 10 pm	Mon 11 pm	Tue 12 am	Tue 1 am	Tue 2 am	Tue 3 am	Tue 4 am	Tue 5 am	Tue 6 am	Tue 7 am	Tue 8 am	Tue 9 am	Tue 10 am	Tue 11 am	Tue 12 pm	Tue 1 pm	Tue 2 pm
Houston Pilots N - 610 Bridge	13 25 ↖	13 25 ↖	13 25 ↖	13 26 ↖	13 25 ↖	12 24 ↖	12 24 ↖	12 24 ↖	12 23 ↖	12 23 ↖	10 22 ↖	10 22 ↖	10 22 ↖	10 22 ↖	10 22 ↖	10 23 ↖	10 24 ↖	12 23 ↖	13 26 ↖	14 26 ↖	15 29 ↖	16 32 ↖	16 32 ↖	16 33 ↖
Houston Pilots M - Kinder 1	13 25 ↖	13 25 ↖	13 25 ↖	13 25 ↖	13 25 ↖	12 24 ↖	12 24 ↖	12 24 ↖	12 23 ↖	12 23 ↖	10 22 ↖	10 22 ↖	10 22 ↖	10 22 ↖	10 23 ↖	10 23 ↖	12 24 ↖	12 24 ↖	13 26 ↖	14 28 ↖	15 29 ↖	16 32 ↖	16 32 ↖	16 32 ↖
Houston Pilots L - Greens Bayou	13 24 ↖	13 24 ↖	13 25 ↖	13 25 ↖	13 24 ↖	12 23 ↖	12 23 ↖	12 23 ↖	12 23 ↖	12 23 ↖	10 22 ↖	10 22 ↖	10 22 ↖	10 22 ↖	10 22 ↖	10 23 ↖	12 24 ↖	12 24 ↖	13 26 ↖	14 26 ↖	15 29 ↖	16 31 ↖	16 32 ↖	16 32 ↖
Houston Pilots K - Shell Crude	13 24 ↖	13 24 ↖	13 24 ↖	13 25 ↖	13 24 ↖	12 23 ↖	12 23 ↖	12 23 ↖	12 23 ↖	12 23 ↖	10 23 ↖	10 22 ↖	10 22 ↖	10 22 ↖	10 23 ↖	10 23 ↖	12 24 ↖	12 24 ↖	13 26 ↖	14 28 ↖	15 29 ↖	16 31 ↖	17 32 ↖	17 32 ↖
Houston Pilots J - Lynchburg Ferries	13 24 ↖	13 24 ↖	13 24 ↖	13 24 ↖	13 23 ↖	12 23 ↖	10 22 ↖	10 22 ↖	10 22 ↖	10 22 ↖	10 22 ↖	10 22 ↖	10 21 ↖	10 22 ↖	10 22 ↖	10 23 ↖	12 24 ↖	12 24 ↖	13 26 ↖	14 26 ↖	15 29 ↖	16 31 ↖	17 32 ↖	17 32 ↖
Houston Pilots I - Exxon 3	15 24 ↖	15 24 ↖	15 24 ↖	15 25 ↖	15 24 ↖	15 23 ↖	15 23 ↖	16 24 ↖	16 24 ↖	17 24 ↖	16 24 ↖	16 23 ↖	16 24 ↖	16 24 ↖	16 25 ↖	17 25 ↖	17 25 ↖	17 25 ↖	18 26 ↖	18 26 ↖	20 28 ↖	20 30 ↖	20 31 ↖	20 32 ↖
Houston Pilots H - Margans Point	15 24 ↖	15 25 ↖	15 25 ↖	16 25 ↖	16 25 ↖	15 24 ↖	16 24 ↖	16 24 ↖	17 25 ↖	17 25 ↖	17 24 ↖	16 24 ↖	17 24 ↖	17 25 ↖	17 25 ↖	17 25 ↖	17 26 ↖	17 25 ↖	18 26 ↖	18 28 ↖	20 29 ↖	20 30 ↖	20 31 ↖	20 31 ↖
Houston Pilots G - 75/76	16 26 ↖	17 26 ↖	17 28 ↖	17 28 ↖	17 28 ↖	17 26 ↖	18 26 ↖	18 28 ↖	20 28 ↖	20 28 ↖	20 28 ↖	20 26 ↖	20 28 ↖	20 28 ↖	20 28 ↖	20 29 ↖	20 29 ↖	20 29 ↖	21 29 ↖	21 30 ↖	21 31 ↖	21 32 ↖	21 32 ↖	20 32 ↖
Houston Pilots F - 63/64	17 26 ↖	17 28 ↖	17 28 ↖	17 28 ↖	17 28 ↖	17 26 ↖	18 26 ↖	20 28 ↖	20 28 ↖	20 28 ↖	20 28 ↖	20 26 ↖	20 28 ↖	20 28 ↖	20 28 ↖	20 29 ↖	20 28 ↖	21 29 ↖	21 29 ↖	22 30 ↖	22 31 ↖	22 32 ↖	22 32 ↖	21 32 ↖
Houston Pilots E - 51/52	17 28 ↖	17 28 ↖	17 28 ↖	17 28 ↖	17 28 ↖	17 26 ↖	18 26 ↖	20 28 ↖	20 28 ↖	20 29 ↖	20 28 ↖	20 28 ↖	20 28 ↖	20 29 ↖	20 29 ↖	21 29 ↖	21 29 ↖	21 29 ↖	22 30 ↖	22 31 ↖	22 31 ↖	22 32 ↖	22 32 ↖	21 32 ↖
Houston Pilots D - 37/38	17 28 ↖	17 28 ↖	17 28 ↖	18 28 ↖	17 28 ↖	17 26 ↖	18 26 ↖	20 28 ↖	20 28 ↖	20 29 ↖	20 28 ↖	20 28 ↖	20 28 ↖	20 29 ↖	20 29 ↖	21 29 ↖	21 29 ↖	21 29 ↖	21 30 ↖	22 31 ↖	22 32 ↖	22 32 ↖	22 32 ↖	22 32 ↖
Houston Pilots C - 25/26	17 26 ↖	17 28 ↖	17 28 ↖	17 28 ↖	17 28 ↖	17 26 ↖	18 26 ↖	20 28 ↖	20 28 ↖	20 28 ↖	20 28 ↖	20 28 ↖	20 28 ↖	20 29 ↖	20 29 ↖	20 29 ↖	20 29 ↖	21 29 ↖	21 29 ↖	22 31 ↖	22 31 ↖	22 32 ↖	22 32 ↖	22 32 ↖
Houston Pilots B - 11/12	17 26 ↖	17 26 ↖	17 26 ↖	17 26 ↖	17 25 ↖	17 25 ↖	17 26 ↖	20 28 ↖	20 28 ↖	20 28 ↖	20 26 ↖	20 28 ↖	20 28 ↖	20 28 ↖	20 28 ↖	20 28 ↖	20 28 ↖	20 28 ↖	21 29 ↖	21 30 ↖	21 30 ↖	21 32 ↖	21 32 ↖	21 32 ↖
Houston Pilots A - 1 & 2 Bravo	18 26 ↖	18 26 ↖	18 26 ↖	18 28 ↖	18 26 ↖	18 28 ↖	20 28 ↖	20 29 ↖	20 29 ↖	21 29 ↖	21 29 ↖	21 29 ↖	21 29 ↖	21 29 ↖	21 29 ↖	21 29 ↖	21 29 ↖	21 29 ↖	21 30 ↖	22 30 ↖	22 31 ↖	23 32 ↖	23 32 ↖	22 32 ↖

NOTE: This is automated data that may/may not agree with the official BAM thinking that's found on the daily slides. This data should be used as a guide only.

Houston Pilots: MON. 5/5/2025



Forecast Discussion

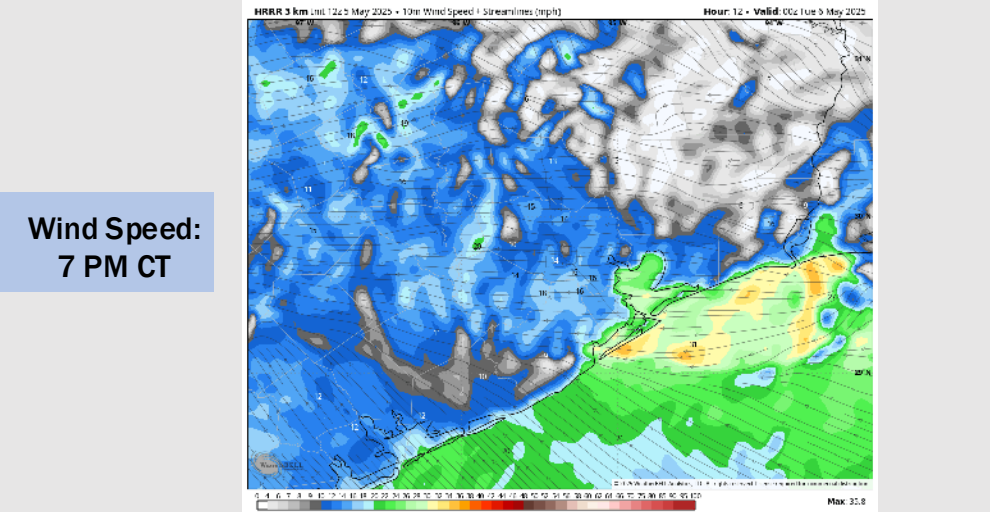
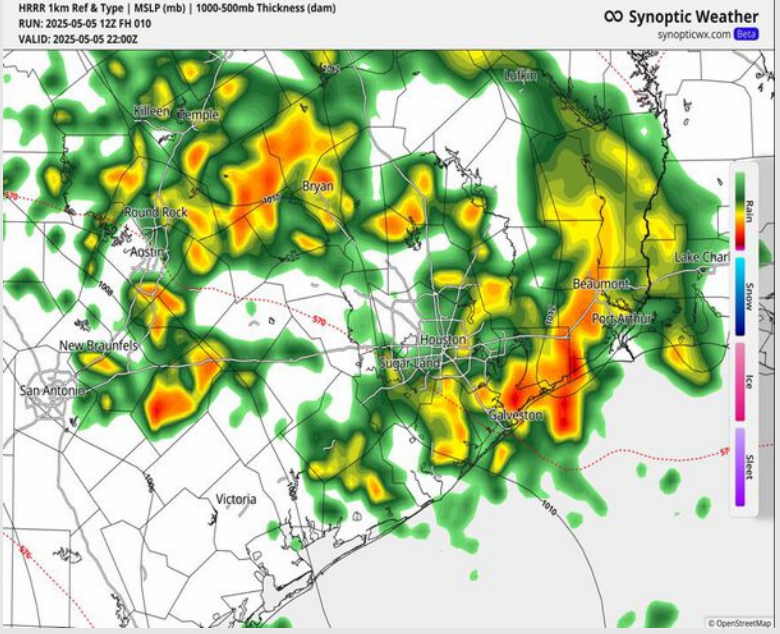
Precip: Isolated to scattered showers will work into the area post 2PM, becoming more widespread in nature after 5PM. A few storms will be in the mix from 2PM to 9PM. **Lightning and wind gusts of 30 - 35 kts will be a risk within storms.**

Wind: Winds will be out of the E/SE today. **N of Morgan's Point:** Winds will be at 8-13 kts the rest of the day. **S of Morgan's Point:** Winds will be at 15-20 kts for the rest of the PM hours. **Gusts up to 22-27 kts possible for all stations after 2 PM.**

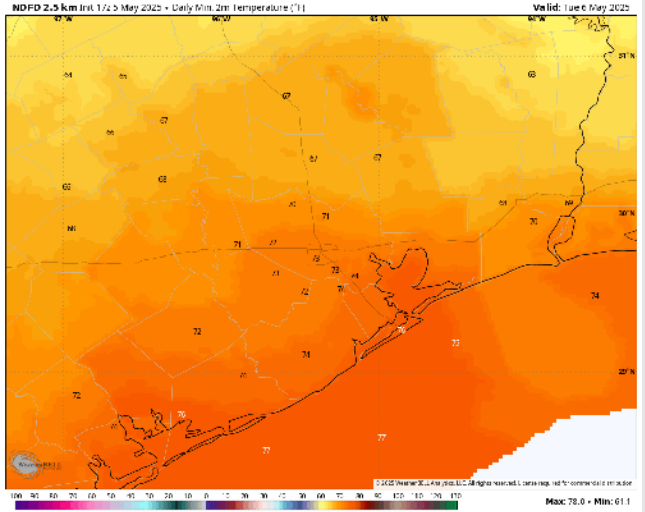
Low Temps: **N of Morgan's Point:** Low 70s F. **S of Morgan's Point:** Mid 70s F.

Visibility: Visibilities may be reduced under heavy downpours.

Precip Image: 5 PM CT



Wind Speed:
7 PM CT



Low Temps
TUE AM

Houston Pilots: TUE. 5/6/2025

Forecast Discussion

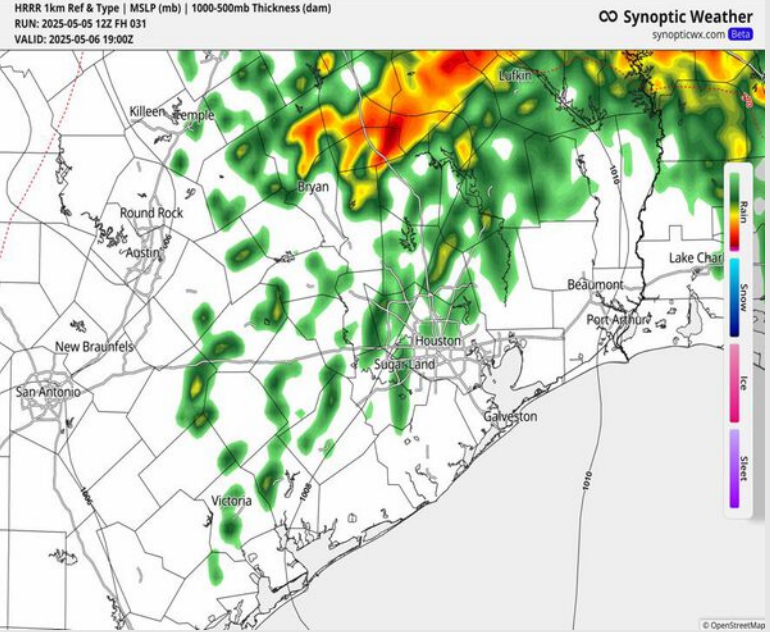
Precip: Scattered (30%) showers in play throughout the day. Storms will be possible after 2PM, with some able to become strong to severe after 2 PM. Main risks will be lightning, large hail, wind gusts of 35 – 50 kts, and an isolated tornado.

Wind: Winds will be out of the SE throughout the day. **N of Morgan's Point:** Winds will be at 4 – 9 kts through much of the day, increasing to 10 – 15 kts between 9AM and 5PM. **S of Morgan's Point:** Winds will be at 17 - 22 kts throughout the day. **Non-thunderstorm wind gusts of 25 – 30 kts in play for all Stations throughout the day. Gusts increase to 30 – 35 kts for all Stations between 10 AM – 5 PM.**

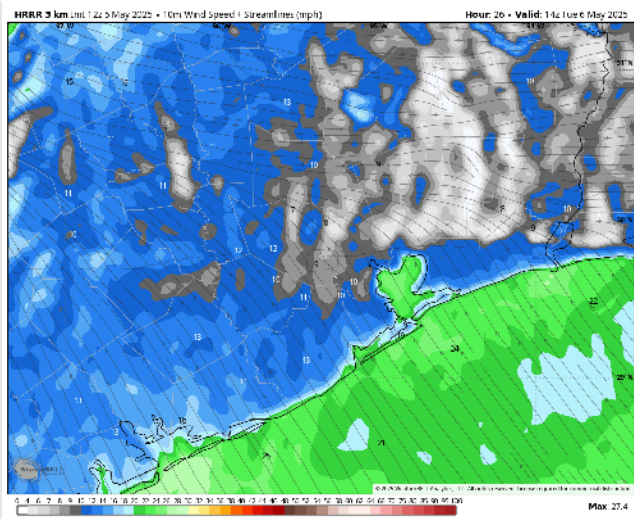
High Temps: **N of Morgan's Point:** Low 80s F. **S of Morgan's Point:** Near 80 F.

Visibility: No fog concerns for Tuesday, however visibilities can be reduced under heavy downpours.

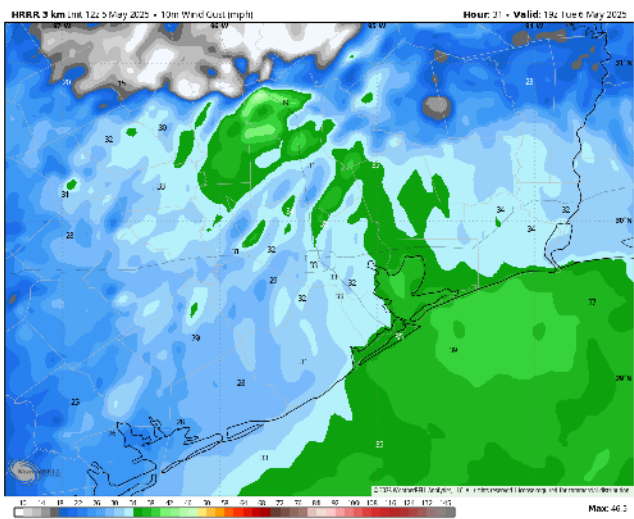
Precip Image: 2 PM CT



Wind Speed
9 AM CT



PEAK Wind
Gusts



Houston Pilots: WED. 5/7/2025



Forecast Discussion

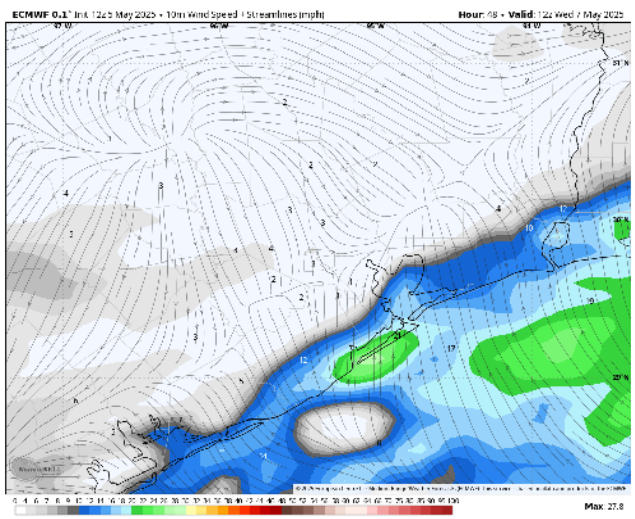
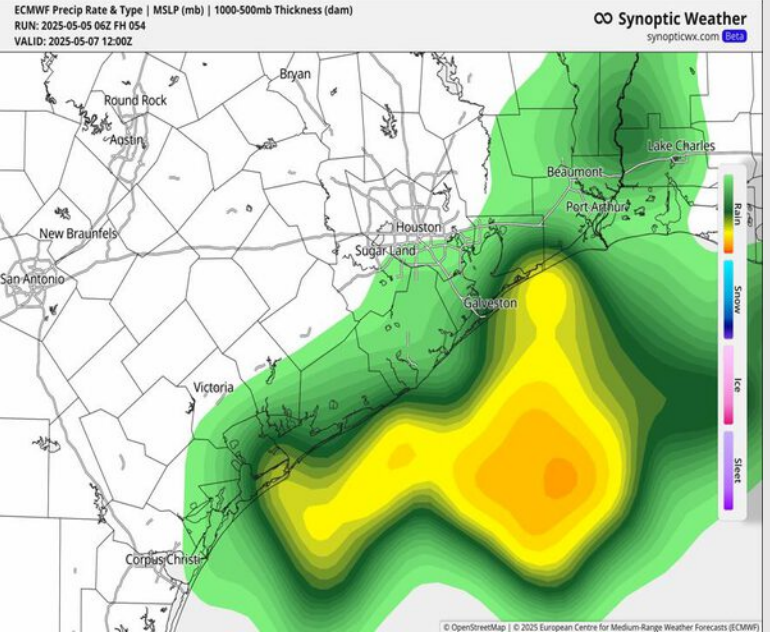
Precip: Scattered showers and storms in play for all Stations throughout the day. No severe weather is expected however lightning will be a risk with general thunderstorms.

Wind: Winds will settle out of the SE shortly after midnight and remain there throughout Wednesday. **N of Morgan's Point:** Winds will at 3 – 8 kts throughout the day. **S of Morgan's Point:** Winds will be at 15 – 20 kts through 1 PM, decreasing to 5 – 10 kts after that time. **Wind gusts of 20 – 25 kts in play for Stations S of Morgan's Point through 12PM.**

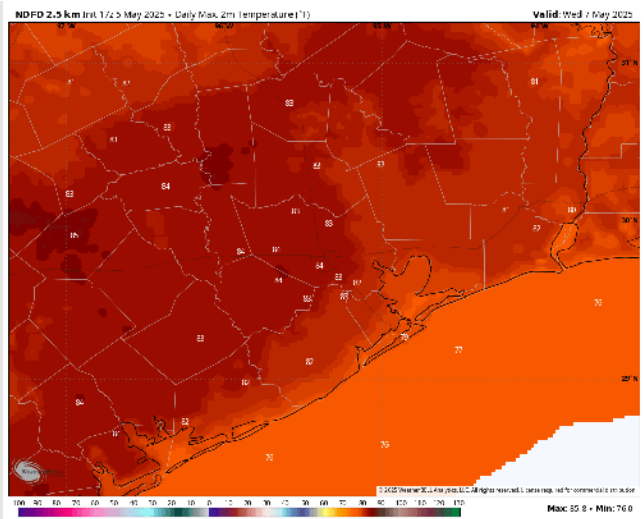
High Temps: **N of Morgan's Point:** Low 80s F. **S of Morgan's Point:** Near 80 F.

Visibility: No fog concerns for Wednesday, however visibilities may be reduced under heavy downpours.

Precip Image: 7 AM CT



Wind Speed:
7 AM CT

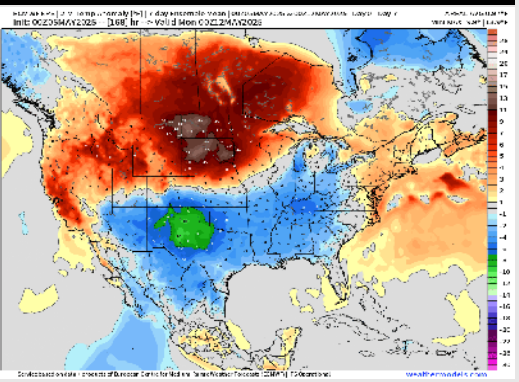


High Temps
Wednesday

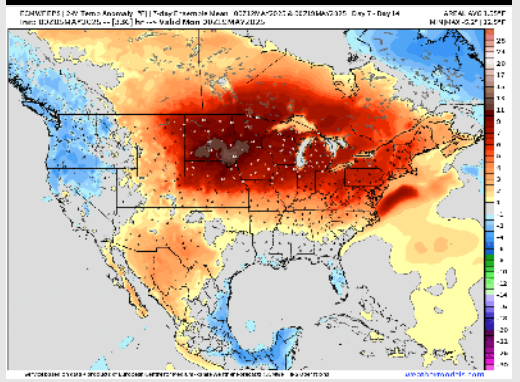
Houston Pilots: 5/5/25



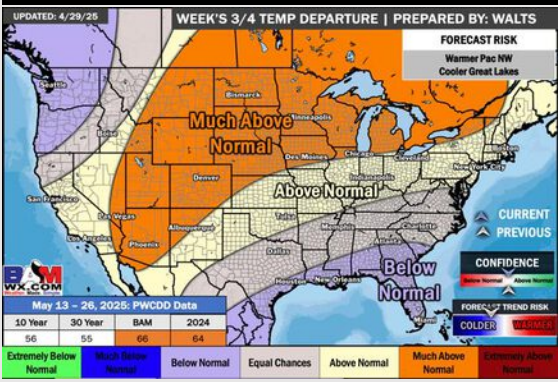
Next 7 Day Temperature Departure



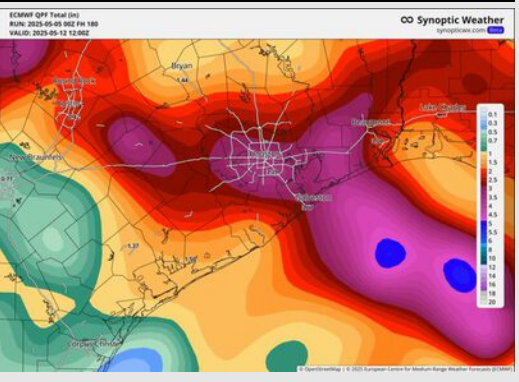
8-14 Day Temperature Departure



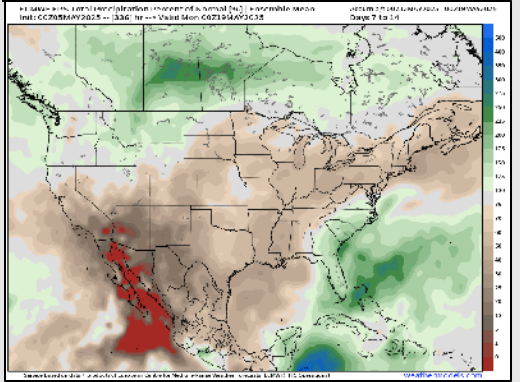
15-30 Day Temperature Departure



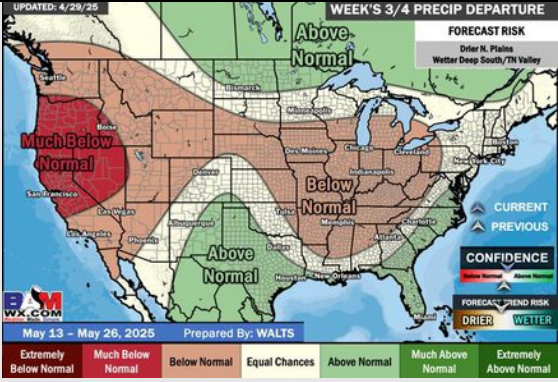
Next 7 Day Total Precipitation



8-14 Day % of Average Precip.



15-30 Day % of Average Precip.



- Temps are expected to be below normal the next 7 days. Scattered rain showers expected throughout the week, becoming heavy at times.
- Near normal temps and below normal rainfall is favored 8 - 14 days from now.
- Below normal temperatures and above normal precipitation chances are favored for mid May.