

Houston Pilots Forecast Package



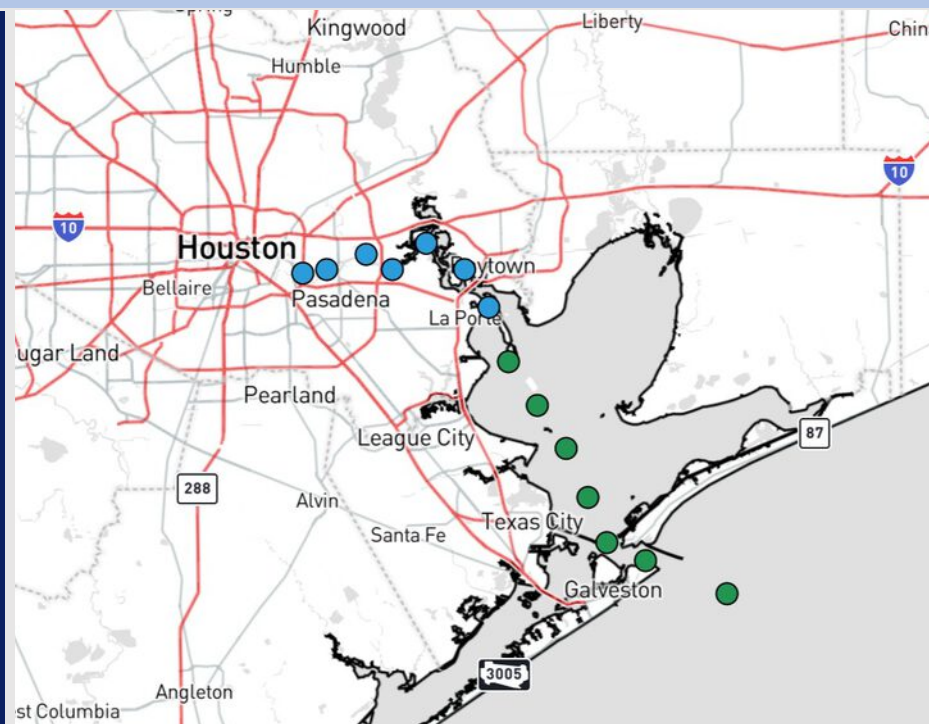
Updated: 10:00 PM CT

Saturday, May 31, 2025

Forecaster: Tyler Riggles

Weather Headlines

- **Monitoring the risk for patchy non-sea fog for Stations N of Morgan's Point this morning.**
- **A few stronger storms will be possible this afternoon/early evening in an isolated fashion.**



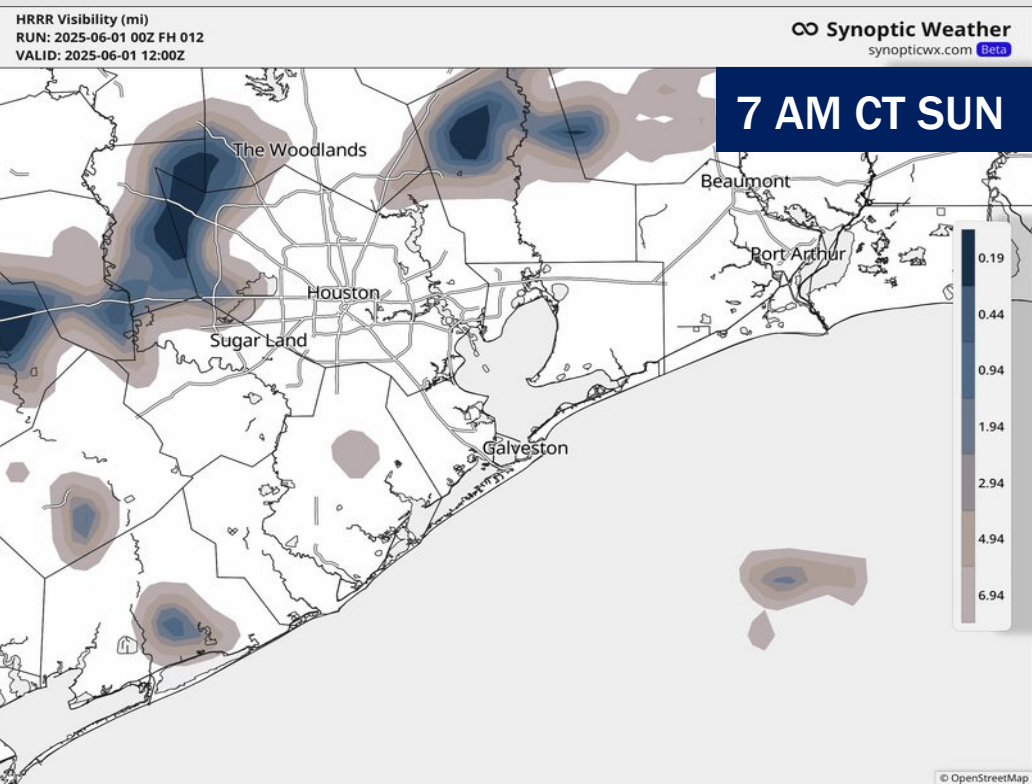
Current Radar: 9:48 PM CT

As always, please do not hesitate to reach out to us with any forecast questions at **(317)-560-8122**. **Press 1 for forecast questions.**

You can also access real-time forecast updates and 24/7 meteorological chat assistance on your [Clarity](#) app. Click [here](#) for login assistance.



Houston Pilots Visibility Report



TIMEFRAME DISCUSSED	THREAT	Confidence
4AM - 8 AM SUN	Low-End	Above Normal
		Below Normal

From 4AM – 8AM CT, stations **N of Morgan’s Point** will be at risk for Isolated Fog.

This risk will primarily remain over land, but reduced visibilities of 1-3 miles can’t be ruled out sporadically during this timeframe.

Reduced visibilities of locally less than 1 mile will be possible, however better risks will be N of All Stations.

Confidence remains below normal in terms of this risk. Confidence remains high in terms of timing however, and that Stations **S of Morgan’s Point** will not be impacted.

Houston Pilots Visibility Chart (miles)



Visibility	Sat 11 pm	Sun 12 am	Sun 1 am	Sun 2 am	Sun 3 am	Sun 4 am	Sun 5 am	Sun 6 am	Sun 7 am	Sun 8 am	Sun 9 am	Sun 10 am	Sun 11 am	Sun 12 pm	Sun 1 pm	Sun 2 pm	Sun 3 pm	Sun 4 pm	Sun 5 pm	Sun 6 pm	Sun 7 pm	Sun 8 pm	Sun 9 pm	Sun 10 pm
Houston Pilots N - 610 Bridge	10	10	10	10	10	9	6.9	6.9	6.9	5.9	9	10	10	10	10	10	10	10	10	10	10	10	10	10
Houston Pilots M - Kinder 1	10	10	10	10	10	9	6.9	6.9	6.9	5.9	9	10	10	10	10	10	10	10	10	10	10	10	10	10
Houston Pilots L - Greens Bayou	10	10	10	10	10	9	6.9	6.9	6.9	5.9	9	10	10	10	10	10	10	10	10	10	10	10	10	10
Houston Pilots K - Shell Crude	10	10	10	10	10	9	6.9	6.9	6.9	5.9	9	10	10	10	10	10	10	10	10	10	10	10	10	10
Houston Pilots J - Lynchburg Ferries	10	10	10	10	10	9	6.9	6.9	6.9	5.9	9	10	10	10	10	10	10	10	10	10	10	10	10	10
Houston Pilots I - Exxon 3	10	10	10	10	10	9	6.9	6.9	6.9	5.9	9	10	10	10	10	10	10	10	10	10	10	10	10	10
Houston Pilots H - Morgans Point	10	10	10	10	10	9	7.9	6.9	7.9	6.9	9	10	10	10	10	10	10	10	10	10	10	10	10	10
Houston Pilots G - 75/76	10	10	10	10	10	10	10	10	10	6.9	9	10	10	10	10	10	10	10	10	10	10	10	10	10
Houston Pilots F - 63/64	10	10	10	10	10	10	10	10	10	6.9	9	10	10	10	10	10	10	10	10	10	10	10	10	10
Houston Pilots E - 51/52	10	10	10	10	10	10	10	10	10	6.9	9	10	10	10	10	10	10	10	10	10	10	10	10	10
Houston Pilots D - 37/38	10	10	10	10	10	10	10	10	10	6.9	9	10	10	10	10	10	10	10	10	10	10	10	10	10
Houston Pilots C - 25/26	10	10	10	10	10	10	10	10	10	6.9	9	10	10	10	10	10	10	10	10	10	10	10	10	10
Houston Pilots B - 11/12	10	10	10	10	10	10	10	10	10	6.9	9	10	10	10	10	10	10	10	10	10	10	10	10	10
Houston Pilots A - 1 & 2 Bravo	10	10	10	10	10	10	10	10	10	7.9	10	10	10	10	10	10	10	10	10	9	9	10	10	10

NOTE: This is automated data that may/may not agree with the official BAM thinking that’s found on the daily slides or special visibility report slides. This data should be used as a guide only

Houston Pilots Wind Chart



Sustained Wind 10 Knots

Gusts 15 Knots

Wind from the SE



Wind	Sat 11 pm	Sun 12 am	Sun 1 am	Sun 2 am	Sun 3 am	Sun 4 am	Sun 5 am	Sun 6 am	Sun 7 am	Sun 8 am	Sun 9 am	Sun 10 am	Sun 11 am	Sun 12 pm	Sun 1 pm	Sun 2 pm	Sun 3 pm	Sun 4 pm	Sun 5 pm	Sun 6 pm	Sun 7 pm	Sun 8 pm	Sun 9 pm	Sun 10 pm
Houston Pilots N - 610 Bridge	3 8 ↑	3 8 ↑	3 7 ↗	3 7 ↗	3 6 ↗	2 6 ↗	2 6 ↗	2 5 ↗	1 5 ↗	1 3 ↗	1 5 ↗	2 5 ↗	2 6 ↗	3 6 ↗	3 7 ↗	3 8 ↑	5 10 ↑	6 12 ↗	7 14 ↑	8 15 ↑	8 16 ↑	8 16 ↑	8 15 ↑	7 14 ↑
Houston Pilots M - Kinder 1	3 8 ↑	3 8 ↑	3 7 ↗	3 7 ↗	3 6 ↗	2 6 ↗	2 6 ↗	2 5 ↗	1 5 ↗	1 3 ↗	1 3 ↗	2 5 ↗	2 6 ↗	3 6 ↗	3 7 ↗	3 8 ↑	5 10 ↑	6 12 ↗	7 14 ↑	8 15 ↑	8 16 ↑	8 16 ↑	8 15 ↑	7 14 ↑
Houston Pilots L - Greens Bayou	3 8 ↑	3 8 ↑	3 7 ↗	3 6 ↗	3 6 ↗	2 6 ↗	2 5 ↗	1 5 ↗	1 5 ↗	1 3 ↗	1 3 ↗	2 5 ↗	2 6 ↗	3 7 ↗	3 7 ↗	5 8 ↗	6 10 ↗	6 12 ↗	7 14 ↑	8 15 ↑	8 16 ↑	8 16 ↑	8 15 ↑	7 14 ↑
Houston Pilots K - Shell Crude	3 8 ↑	3 8 ↑	3 7 ↗	3 7 ↗	2 6 ↗	2 5 ↗	2 5 ↗	1 5 ↗	1 5 ↗	1 3 ↗	1 3 ↗	2 5 ↗	2 6 ↗	3 7 ↗	3 8 ↑	5 8 ↗	6 10 ↗	6 13 ↗	7 14 ↑	8 15 ↑	8 16 ↑	8 16 ↑	8 15 ↑	7 14 ↑
Houston Pilots J - Lynchburg Ferries	3 8 ↑	3 7 ↑	3 7 ↗	3 6 ↗	2 6 ↗	2 5 ↗	2 5 ↗	1 5 ↗	1 3 ↗	1 3 ↗	1 3 ↗	1 3 ↗	2 6 ↗	3 7 ↗	3 8 ↑	5 8 ↗	6 10 ↗	6 13 ↗	7 14 ↑	8 16 ↑	8 16 ↑	8 17 ↑	8 15 ↑	7 14 ↑
Houston Pilots I - Exxon 3	7 10 ↑	6 9 ↗	6 9 ↗	6 8 ↗	5 8 ↗	3 7 ↗	3 6 ↗	3 6 ↗	3 6 ↗	3 6 ↗	3 6 ↗	3 7 ↗	3 7 ↗	3 8 ↑	5 9 ↑	6 10 ↑	7 13 ↑	8 15 ↑	10 15 ↑	10 17 ↑	12 17 ↑	13 18 ↑	12 16 ↑	10 16 ↑
Houston Pilots H - Morgans Point	7 12 ↑	6 9 ↗	6 9 ↗	6 8 ↗	5 8 ↗	3 7 ↗	3 6 ↗	3 6 ↗	3 6 ↗	3 6 ↗	3 6 ↗	3 7 ↗	3 7 ↗	3 8 ↑	5 9 ↑	6 10 ↑	7 13 ↑	8 15 ↑	10 16 ↑	10 17 ↑	12 17 ↑	13 18 ↑	12 16 ↑	10 16 ↑
Houston Pilots G - 75/76	8 13 ↑	8 10 ↗	7 9 ↗	6 9 ↗	6 8 ↗	6 8 ↗	5 8 ↗	5 7 ↗	3 7 ↗	3 6 ↗	3 6 ↗	3 7 ↗	3 7 ↗	5 8 ↑	6 10 ↑	6 13 ↑	8 14 ↑	9 15 ↑	12 17 ↑	12 18 ↑	13 18 ↑	13 20 ↑	13 17 ↑	12 16 ↑
Houston Pilots F - 63/64	8 13 ↑	8 10 ↗	7 9 ↗	6 9 ↗	6 8 ↗	6 8 ↗	6 8 ↗	5 7 ↗	5 7 ↗	3 6 ↗	3 6 ↗	3 7 ↗	5 7 ↗	5 9 ↑	6 10 ↑	6 13 ↑	8 14 ↑	9 15 ↑	12 17 ↑	12 18 ↑	13 18 ↑	13 20 ↑	13 17 ↑	12 16 ↑
Houston Pilots E - 51/52	8 13 ↑	8 10 ↗	7 9 ↗	7 9 ↗	6 8 ↗	6 8 ↗	6 8 ↗	5 7 ↗	5 7 ↗	5 6 ↗	3 6 ↗	3 6 ↗	3 7 ↗	5 9 ↑	6 10 ↑	7 13 ↑	8 14 ↑	9 15 ↑	10 17 ↑	12 17 ↑	13 17 ↑	13 18 ↑	12 16 ↑	10 16 ↑
Houston Pilots D - 37/38	8 13 ↑	7 10 ↑	7 9 ↗	6 9 ↗	6 8 ↗	6 8 ↗	6 8 ↗	5 7 ↗	3 7 ↗	3 6 ↗	3 6 ↗	3 6 ↗	5 7 ↗	6 9 ↑	6 10 ↑	7 13 ↑	8 14 ↑	9 15 ↑	10 16 ↑	10 17 ↑	12 17 ↑	13 17 ↑	12 16 ↑	10 16 ↑
Houston Pilots C - 25/26	8 12 ↑	7 9 ↑	6 9 ↗	6 9 ↗	6 8 ↗	6 8 ↗	5 8 ↗	5 7 ↗	3 7 ↗	3 6 ↗	3 6 ↗	3 6 ↗	5 7 ↗	6 9 ↑	6 10 ↑	7 12 ↑	8 13 ↑	8 15 ↑	9 15 ↑	10 16 ↑	10 17 ↑	12 17 ↑	10 15 ↑	10 15 ↑
Houston Pilots B - 11/12	6 10 ↑	6 9 ↑	6 9 ↗	6 9 ↗	5 8 ↗	5 8 ↗	5 8 ↗	5 7 ↗	3 7 ↗	3 6 ↗	3 6 ↗	3 6 ↗	3 7 ↗	5 8 ↑	6 9 ↑	7 10 ↑	7 12 ↑	8 14 ↑	9 15 ↑	10 16 ↑	10 16 ↑	10 15 ↑	10 15 ↑	9 14 ↑
Houston Pilots A - 1 & 2 Bravo	8 12 ↑	7 10 ↑	7 9 ↑	7 9 ↗	6 9 ↗	6 8 ↗	6 8 ↗	5 7 ↗	3 7 ↗	3 7 ↗	3 7 ↗	3 7 ↗	5 7 ↗	5 8 ↑	6 8 ↑	6 9 ↑	7 12 ↑	8 13 ↑	9 14 ↑	10 16 ↑	10 16 ↑	10 16 ↑	10 15 ↑	10 15 ↑

NOTE: This is automated data that may/may not agree with the official BAM thinking that's found on the daily slides.
This data should be used as a guide only.

Houston Pilots: SUN. 6/1/2025

Forecast Discussion

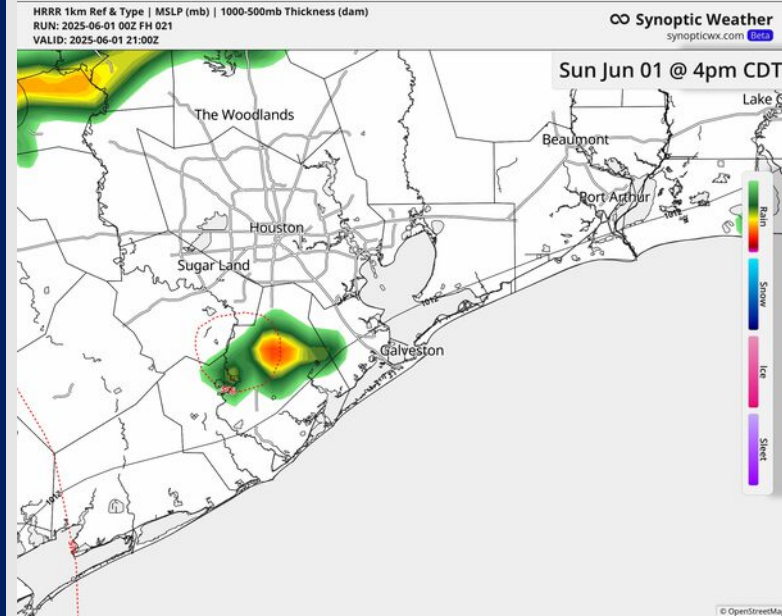
Precip: Isolated showers/storms (20-30%) will be able to work across the area from 4– 7 PM. **The strongest storms will be able to produce gusts of 35-40 kts, although the greatest risk will be North/West of All Stations.**

Wind: Winds will be out of the SW throughout the day. **N of Morgan's Point:** Winds will be at 2-6 kts through ~8 PM before increasing to 5-9 kts the rest of the day. **S of Morgan's Point:** Winds will be at 3 – 8 kts through 4 PM before increasing to 9-14 kts.

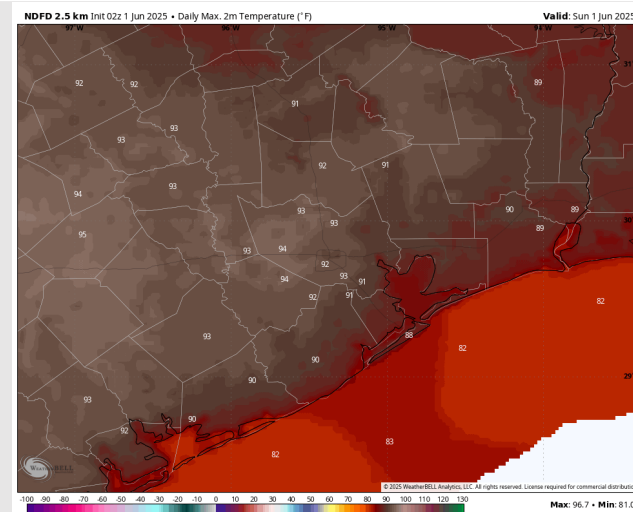
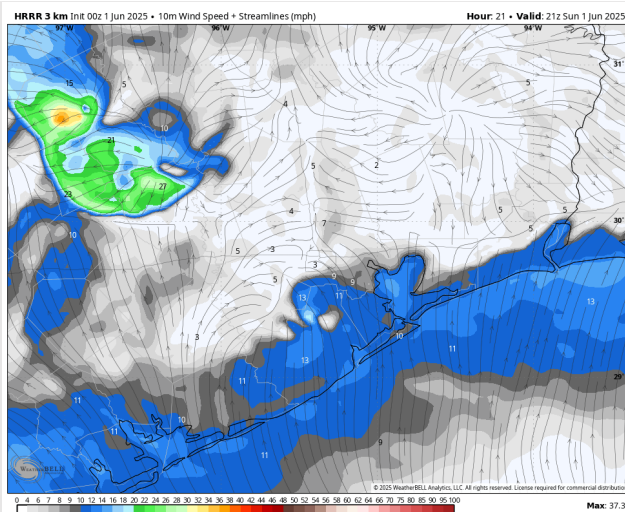
High Temps: **N of Morgan's Point:** Low 90s F. **S of Morgan's Point:** Mid 80s F.

Visibility: Monitoring the risk for patchy non-sea fog for Stations N of Morgan's Point this morning. More details on visibility slide above.

Precip Image: 4 PM CT



Wind Speed:
4 PM CT



High Temps
Today

Houston Pilots: MON. 6/2/2025

Forecast Discussion

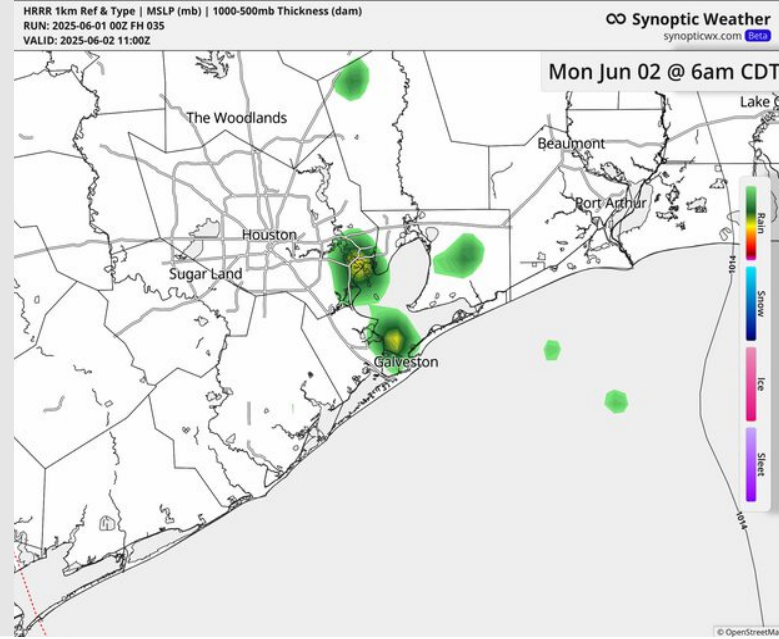
Precip: Isolated showers/storms will be possible from 3 AM – 12 PM Monday, with dry conditions favored for the PM.

Wind: Winds will start out of the South before shifting to being from the SE after 7 AM. **N of Morgan's Point:** Winds will be at 2-6 kts through 2 PM before increasing to 5-10 kts. **S of Morgan's Point:** Winds will be at 3-7 kts through 2 PM before increasing to 9-14 kts.

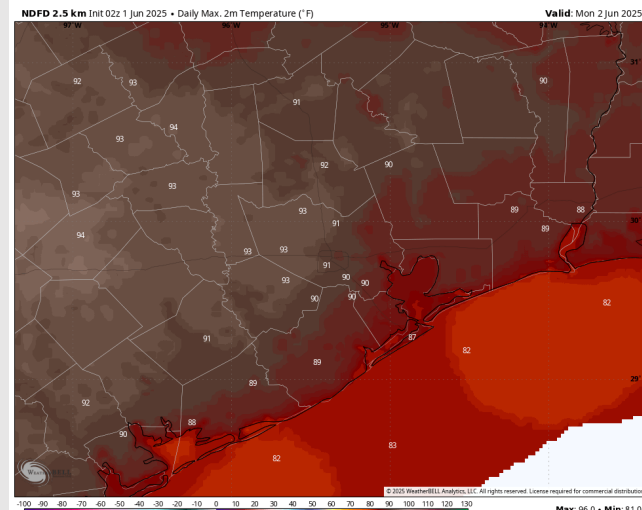
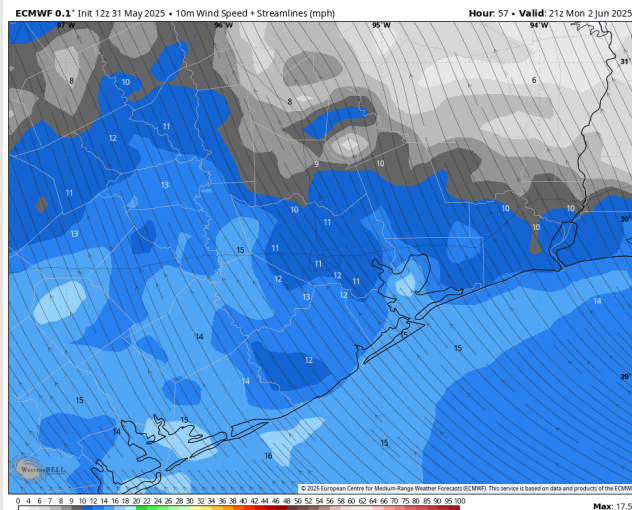
High Temps: **N of Morgan's Point:** Low 90s F. **S of Morgan's Point:** Mid 80s F.

Visibility: No visibility concerns Monday.

Precip Image: 3 PM CT



Wind Speed
4 PM CT



High Temps
Monday

Houston Pilots: TUE. 6/3/2025

Forecast Discussion

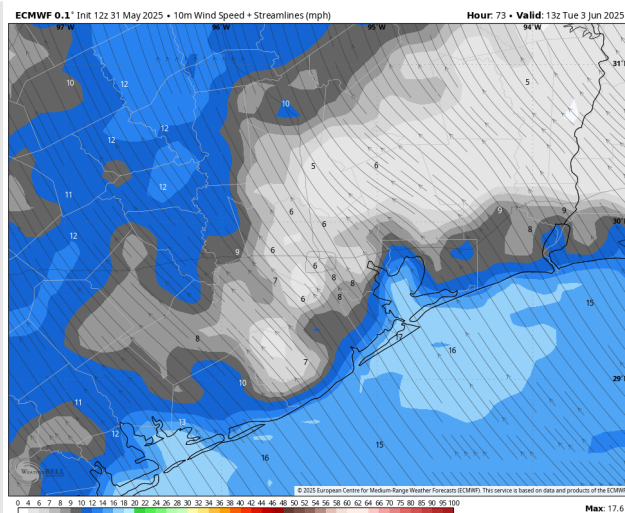
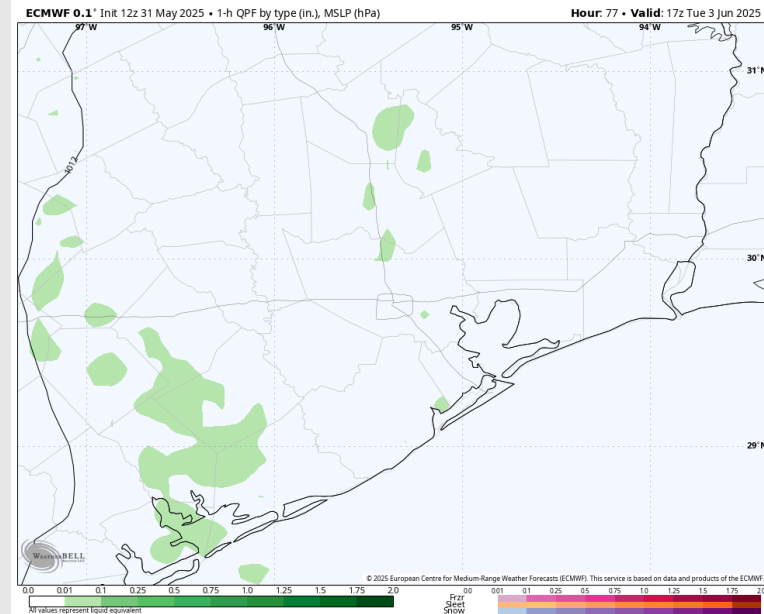
Precip: Isolated showers will be possible from 11 AM to 4 PM, however the majority of coverage likely stays to the West of Stations.

Wind: Winds will be out of the SE throughout Tuesday. **N of Morgan's Point:** Winds will be at 4 – 9 kts. **S of Morgan's Point:** Winds will be at 12 – 17 kts. **Intermittent wind gusts of 20 – 25 kts in play for all Stations throughout the day.**

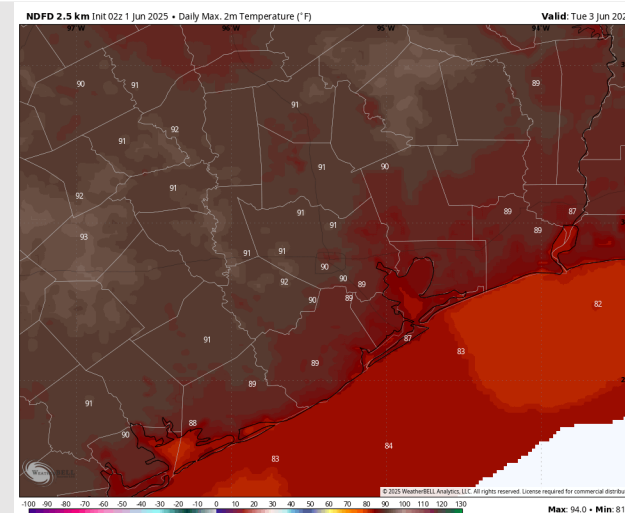
High Temps: **N of Morgan's Point:** Near 90 F. **S of Morgan's Point:** Upper 80s F.

Visibility: No visibility concerns for Tuesday.

Precip Image: 12 PM CT



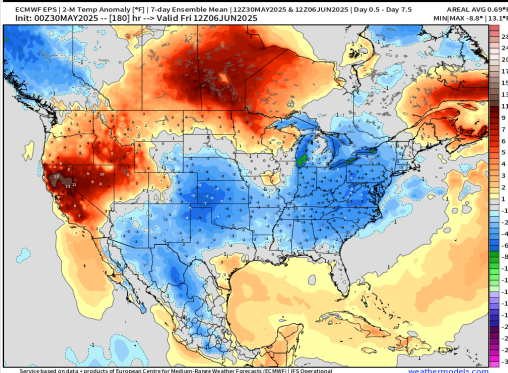
Wind Speed:
8 AM CT



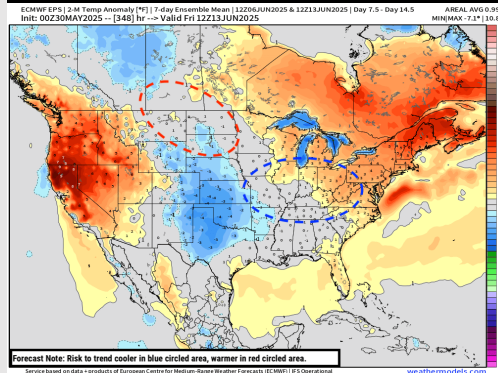
High Temps
Tuesday

Houston Pilots: 6/1/25

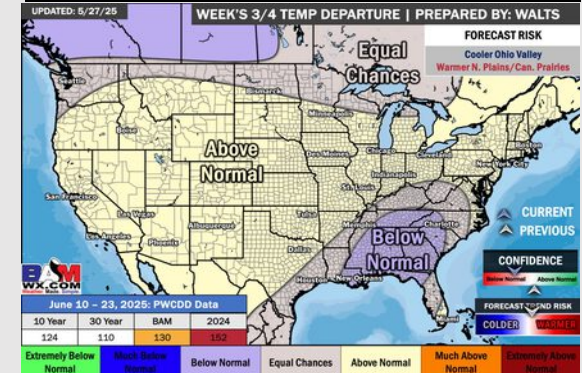
Next 7 Day Temperature Departure



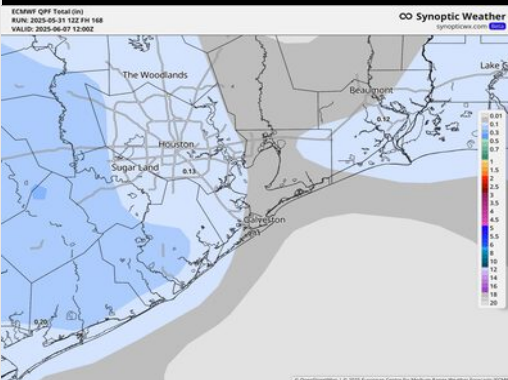
8-14 Day Temperature Departure



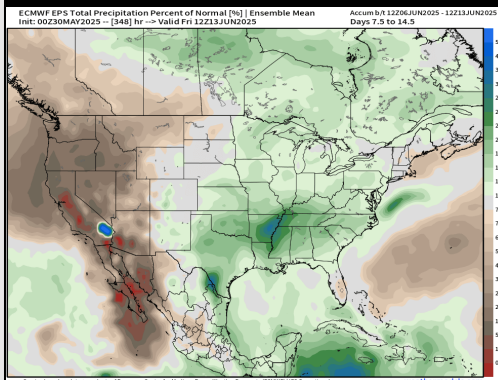
15-30 Day Temperature Departure



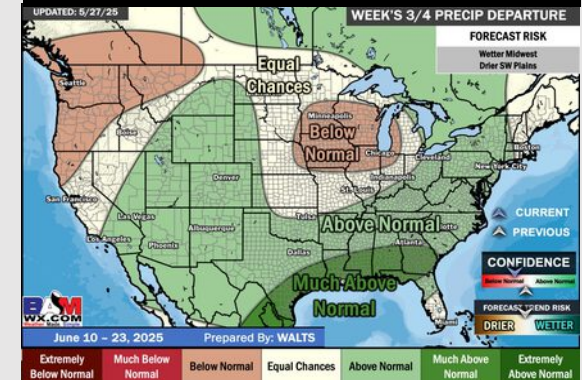
Next 7 Day Total Precipitation



8-14 Day % of Average Precip.



15-30 Day % of Average Precip.



- Temps are expected to be slightly above normal the next 7 days. Scattered rain chances throughout the week.
- Near normal temps and well above normal rainfall is favored for days 8 – 14.
- Slightly below normal temperatures are favored for mid to late June along with much above normal rainfall chances.