

# Houston Pilots Forecast Package



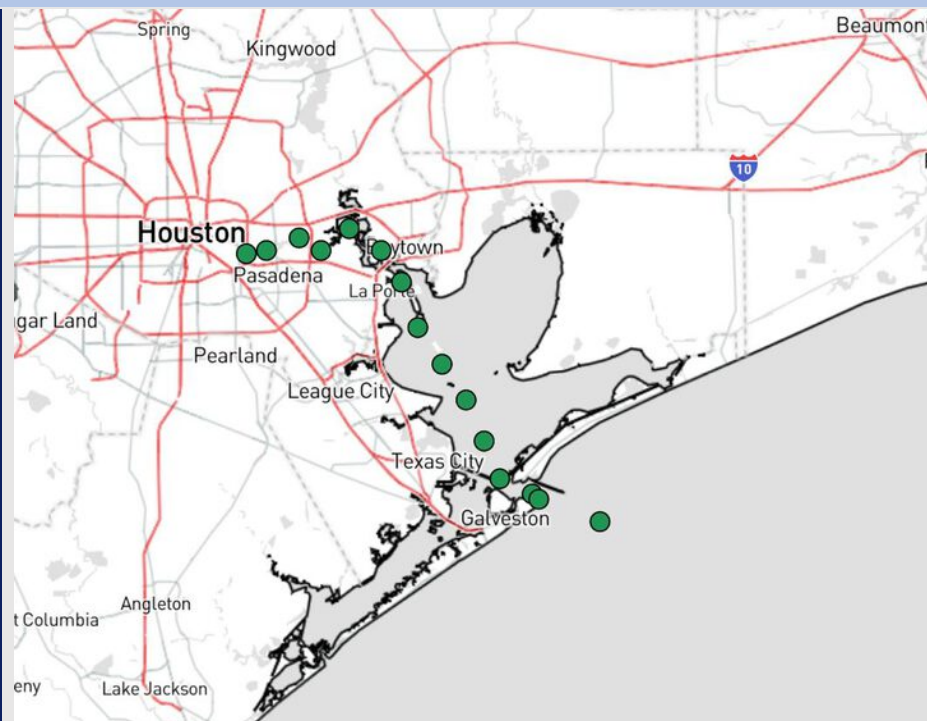
Updated: 12:20 PM CT

Saturday, May 31, 2025

Forecaster: Jonathan Kipper

## Weather Headlines

- **Monitoring the risk for patchy non-sea fog for Stations N of Morgan's Point Sunday morning.**
- **A few stronger storms will be possible SUN afternoon/early evening**



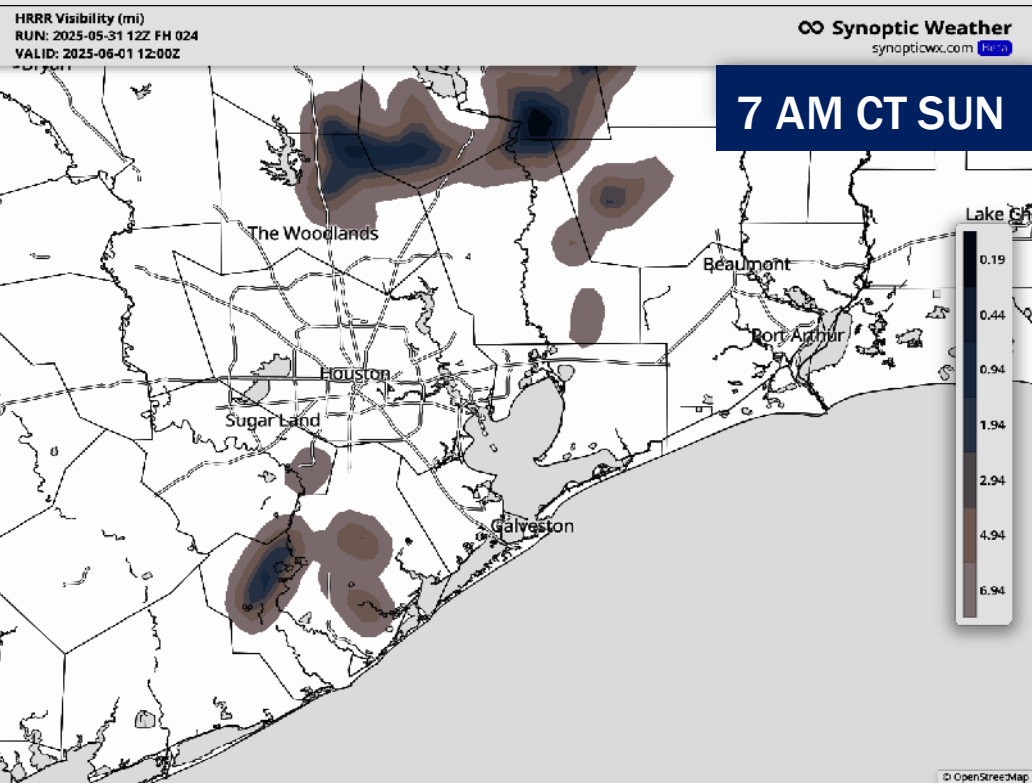
**Current Radar: 12:15 PM CT**

As always, please do not hesitate to reach out to us with any forecast questions at **(317)-560-8122**. **Press 1 for forecast questions.**

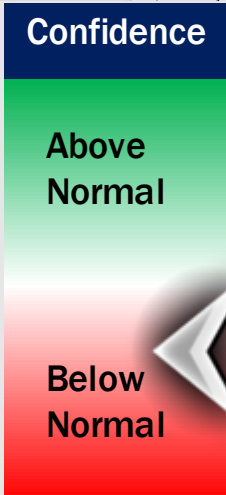
You can also access real-time forecast updates and 24/7 meteorological chat assistance on your **Clarity** app. Click [here](#) for login assistance.



# Houston Pilots Visibility Report



TIMEFRAME DISCUSSED	THREAT
4AM - 8 AM SUN	Low-End



From 4AM – 8AM CT, stations **N of Morgan’s Point** will be at risk for Isolated Fog.

This risk will primarily remain over land, but reduced visibilities of 1-3 miles can’t be ruled out sporadically during this timeframe.

Reduced visibilities of 1-2 miles with locally less than 1 mile will be possible, however better risks will be N of All Stations.

Confidence remains below normal in terms of this risk. Confidence remains high in terms of timing however, and that stations **S of Morgan’s Point** will not be impacted.

# Houston Pilots Visibility Chart (miles)



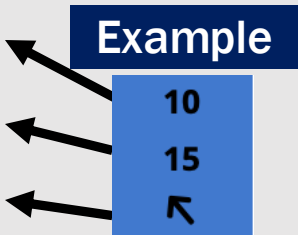
Visibility	Sat 2 pm	Sat 3 pm	Sat 4 pm	Sat 5 pm	Sat 6 pm	Sat 7 pm	Sat 8 pm	Sat 9 pm	Sat 10 pm	Sat 11 pm	Sun 12 am	Sun 1 am	Sun 2 am	Sun 3 am	Sun 4 am	Sun 5 am	Sun 6 am	Sun 7 am	Sun 8 am	Sun 9 am	Sun 10 am	Sun 11 am	Sun 12 pm	Sun 1 pm
Houston Pilots N - 610 Bridge	10	10	10	10	10	10	10	10	10	10	10	10	10	10	10	10	10	9	6.9	9	10	10	10	10
Houston Pilots M - Kinder 1	10	10	10	10	10	10	10	10	10	10	10	10	10	10	10	10	10	9	6.9	9	10	10	10	10
Houston Pilots L - Greens Bayou	10	10	10	10	10	10	10	10	10	10	10	10	10	10	10	10	10	9	6.9	9	10	10	10	10
Houston Pilots K - Shell Crude	10	10	10	10	10	10	10	10	10	10	10	10	10	10	10	10	10	9	6.9	9	10	10	10	10
Houston Pilots J - Lynchburg Ferries	10	10	10	10	10	10	10	10	10	10	10	10	10	10	10	10	10	9	6.9	9	10	10	10	10
Houston Pilots I - Exxon 3	10	10	10	10	10	10	10	10	10	10	10	10	10	10	10	10	10	9	6.9	9	10	10	10	10
Houston Pilots H - Morgans Point	10	10	10	10	10	10	10	10	10	10	10	10	10	10	10	10	10	9	6.9	9	10	10	10	10
Houston Pilots G - 75/76	10	10	10	10	10	10	10	10	10	10	10	10	10	10	10	10	10	10	6.9	10	10	10	10	10
Houston Pilots F - 63/64	10	10	10	10	10	10	10	10	10	10	10	10	10	10	10	10	10	10	6.9	10	10	10	10	10
Houston Pilots E - 51/52	10	10	10	10	10	10	10	10	10	10	10	10	10	10	10	10	10	10	6.9	10	10	10	10	10
Houston Pilots D - 37/38	10	10	10	10	10	10	10	10	10	10	10	10	10	10	10	10	10	10	6.9	10	10	10	10	10
Houston Pilots C - 25/26	10	10	10	10	10	10	10	10	10	10	10	10	10	10	10	10	10	10	6.9	10	10	10	10	10
Houston Pilots B - 11/12	10	10	10	10	10	10	10	10	10	10	10	10	10	10	10	10	10	10	6.9	10	10	10	10	10
Houston Pilots A - 1 & 2 Bravo	10	10	10	10	10	10	10	10	10	10	9	10	10	10	10	10	10	9	6.9	9	10	10	10	10

NOTE: This is automated data that may/may not agree with the official BAM thinking that's found on the daily slides or special visibility report slides. This data should be used as a guide only

# Houston Pilots Wind Chart



Sustained Wind 10 Knots  
Gusts 15 Knots  
Wind from the SE



Wind	Sat 2 pm	Sat 3 pm	Sat 4 pm	Sat 5 pm	Sat 6 pm	Sat 7 pm	Sat 8 pm	Sat 9 pm	Sat 10 pm	Sat 11 pm	Sun 12 am	Sun 1 am	Sun 2 am	Sun 3 am	Sun 4 am	Sun 5 am	Sun 6 am	Sun 7 am	Sun 8 am	Sun 9 am	Sun 10 am	Sun 11 am	Sun 12 pm	Sun 1 pm
Houston Pilots N - 610 Bridge	5	5	5	5	5	6	6	5	3	3	3	3	3	2	2	2	2	2	2	2	2	2	3	3
	9	9	9	9	10	10	9	9	8	8	7	6	6	6	6	5	5	5	5	5	5	6	6	7
Houston Pilots M - Kinder 1	5	5	5	5	6	6	6	5	3	3	3	3	3	2	2	2	2	2	2	2	2	3	3	
	9	9	9	9	10	10	10	9	8	8	7	6	6	6	6	5	5	5	3	5	5	6	6	7
Houston Pilots L - Greens Bayou	5	5	5	5	5	6	6	5	3	3	3	3	3	2	2	2	2	1	1	1	2	2	3	3
	9	9	9	9	10	10	9	9	8	7	7	6	6	6	5	5	3	5	3	5	5	6	6	7
Houston Pilots K - Shell Crude	5	5	5	6	6	6	6	5	3	3	3	3	3	2	2	2	1	1	1	1	2	2	3	3
	9	9	9	9	10	10	9	9	8	8	7	6	6	6	5	5	3	5	3	5	5	6	7	7
Houston Pilots J - Lynchburg Ferries	5	5	5	5	5	6	6	5	3	3	3	2	2	2	1	1	1	1	1	1	1	2	3	3
	9	9	9	9	10	10	10	9	8	7	7	6	6	5	5	5	3	3	3	5	5	6	7	7
Houston Pilots I - Exxon 3	5	6	6	7	8	8	8	8	7	6	6	5	5	3	3	3	3	3	3	3	3	3	3	5
	10	10	10	10	13	13	13	12	10	10	9	8	8	7	6	6	6	6	6	6	6	7	7	8
Houston Pilots H - Morgans Point	6	6	6	7	8	8	8	8	7	6	6	6	5	5	3	3	3	3	3	3	3	3	3	5
	10	10	10	12	13	13	13	12	10	10	9	8	8	7	7	6	6	6	6	6	6	7	7	8
Houston Pilots G - 75/76	6	6	6	8	8	9	10	9	8	8	7	6	6	6	5	5	5	3	5	3	3	5	5	6
	12	12	13	13	14	15	14	13	13	12	9	9	9	8	8	8	7	7	7	7	7	7	8	9
Houston Pilots F - 63/64	6	6	6	8	8	9	10	9	8	8	7	6	6	6	6	6	5	5	5	3	3	5	5	6
	12	12	12	13	14	14	14	13	13	12	9	9	9	8	8	8	7	7	7	7	7	7	8	10
Houston Pilots E - 51/52	6	6	6	7	8	8	9	9	8	8	7	6	6	6	6	6	5	5	5	3	3	5	5	6
	12	12	12	13	14	14	14	13	13	12	9	9	9	8	8	8	7	7	7	7	7	7	8	10
Houston Pilots D - 37/38	6	6	6	7	8	8	9	8	8	8	7	6	6	6	6	5	5	5	5	3	3	5	5	6
	12	12	12	13	13	14	13	13	12	12	9	9	9	8	8	8	7	7	7	7	6	7	8	10
Houston Pilots C - 25/26	6	6	6	7	7	8	8	8	8	7	6	6	6	6	5	5	5	3	5	3	3	5	5	6
	12	12	12	12	13	13	13	12	12	10	9	9	9	8	8	8	7	7	7	7	6	7	8	9
Houston Pilots B - 11/12	7	6	6	7	7	8	8	7	6	6	6	6	6	5	5	3	3	3	3	3	3	3	5	6
	12	10	10	10	12	12	12	12	10	10	9	9	8	8	8	7	6	7	6	7	6	7	7	9
Houston Pilots A - 1 & 2 Bravo	7	7	6	7	7	8	8	8	8	7	7	6	6	6	6	6	5	5	5	3	3	3	5	5
	12	12	10	10	12	12	12	12	12	12	9	9	9	9	8	8	7	7	7	7	7	7	7	8

NOTE: This is automated data that may/may not agree with the official BAM thinking that's found on the daily slides.  
This data should be used as a guide only.

# Houston Pilots: SAT. 5/31/2025

## Forecast Discussion

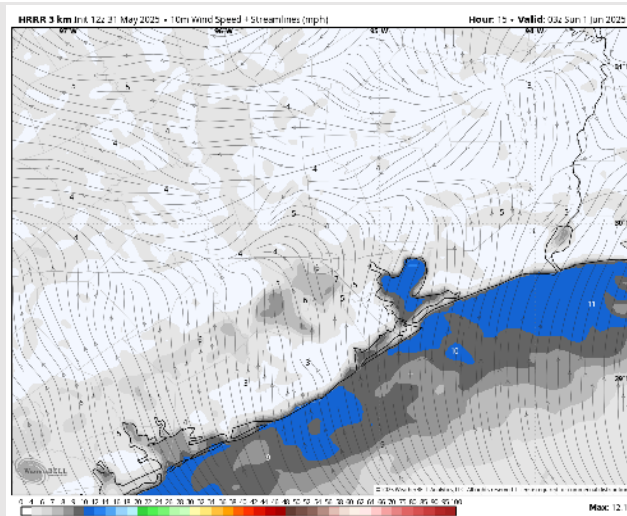
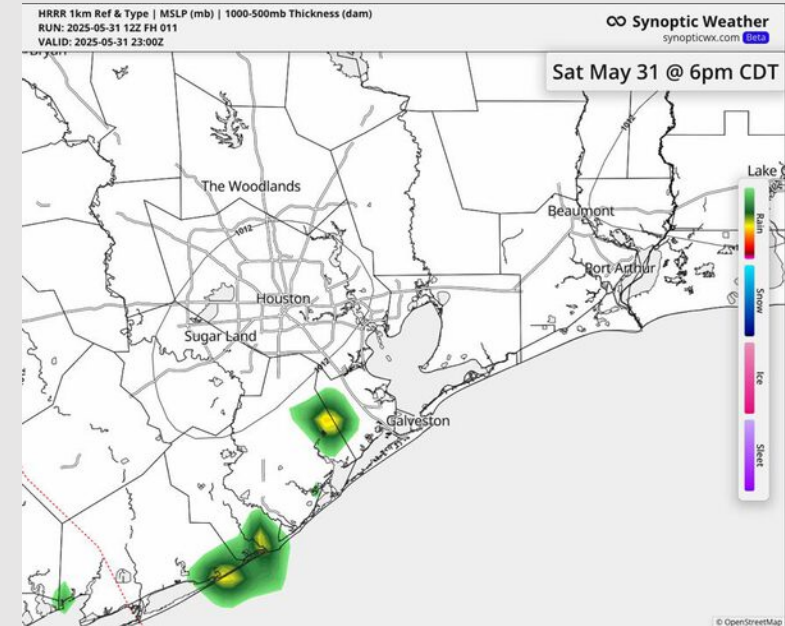
**Precip:** Isolated showers will be possible from 3 to 7 PM with dry time favored the rest of the day.

**Wind:** Winds will be variable in direction through ~9 PM before settling out of the S/SW. **N of Morgan's Point:** Winds will be at 2 – 7 kts. **S of Morgan's Point:** Winds will be at 4-9 kts for the remainder of the day.

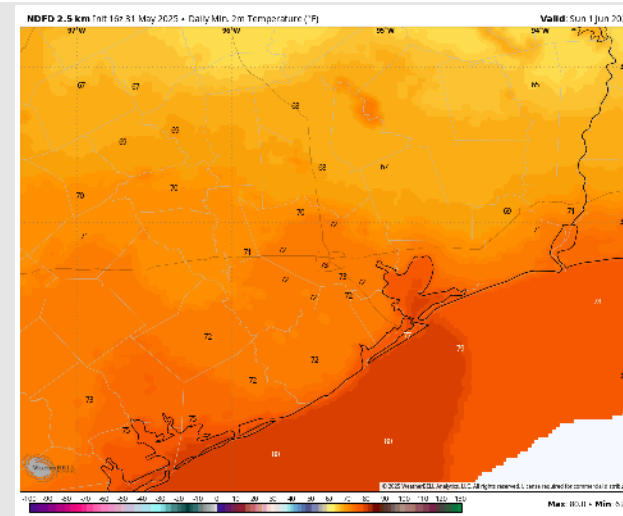
**Low Temps:** **N of Morgan's Point:** Low 70s F. **S of Morgan's Point:** Upper 70s F.

**Visibility:** No visibility concerns the rest of today.

## Precip Image: 6 PM CT



Wind Speed:  
10 PM CT





# Houston Pilots: SUN. 6/1/2025

## Forecast Discussion

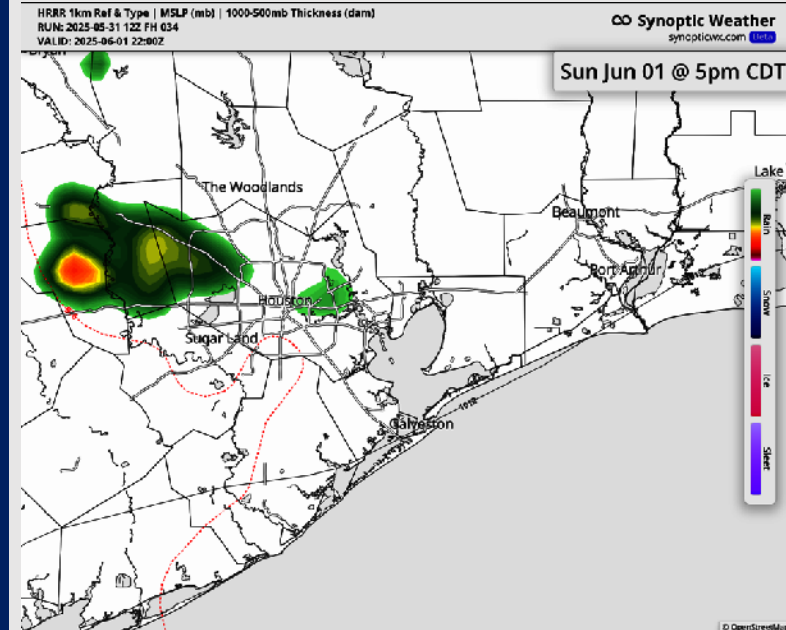
**Precip:** Isolated showers/storms (20-30%) will be able to work across the area from 4– 7 PM SUN. **The strongest storms will be able to produce gusts of 35-40 kts, although the greatest risk will be North of All Stations.**

**Wind:** Winds will be out of the SW throughout the entire day on SUN. **N of Morgan's Point:** Winds will be at 2-6 kts through ~8 PM before increasing to 5-9 kts the rest of the day. **S of Morgan's Point:** Winds will be at 3 – 8 kts through 5 PM before increasing to 9-14 kts.

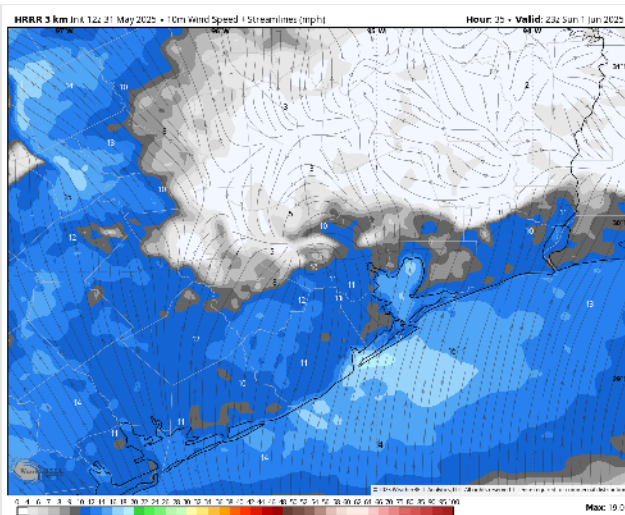
**High Temps:** **N of Morgan's Point:** Low 90s F. **S of Morgan's Point:** Mid 80s F.

**Visibility:** Monitoring the risk for patchy non-sea fog for Stations N of Morgan's Point Sunday morning. More details on visibility slide above.

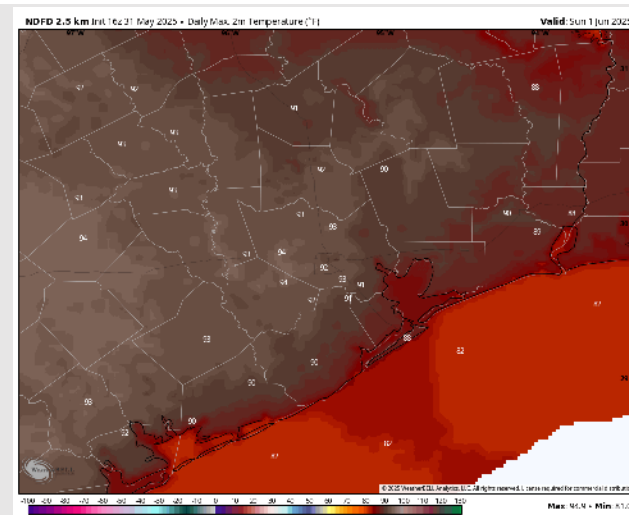
## Precip Image: 5 PM CT



Wind Speed:  
6 PM CT



High Temps  
Sunday



# Houston Pilots: MON. 6/2/2025

## Forecast Discussion

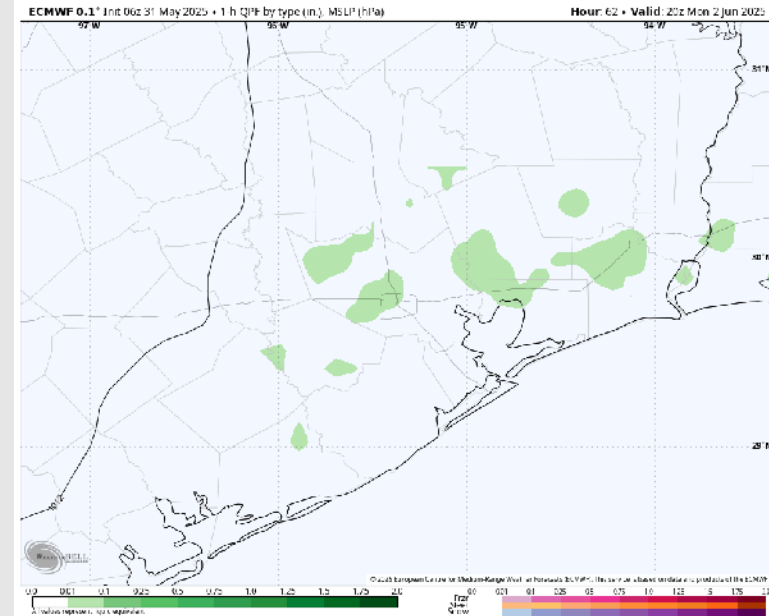
**Precip:** Isolated showers/storms will be possible from 12PM – 5PM Monday, with dry time favored outside of this window.

**Wind:** Winds will start out of the South before shifting to being from the SE after 7 AM. **N of Morgan's Point:** Winds will be at 2-6 kts through 2 PM before increasing to 5-10 kts. **S of Morgan's Point:** Winds will be at 3-7 kts through 2 PM before increasing to 9-14 kts.

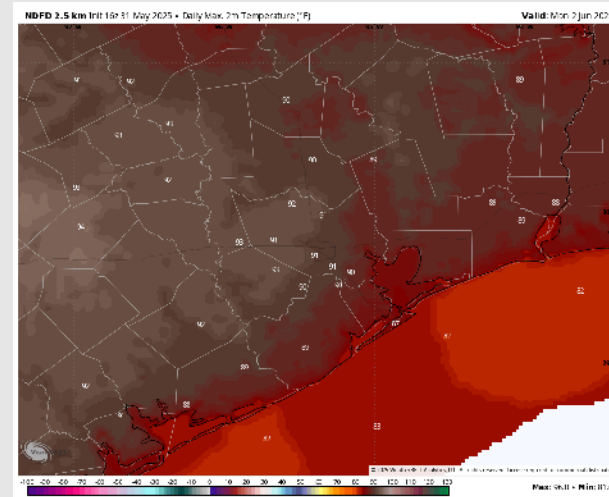
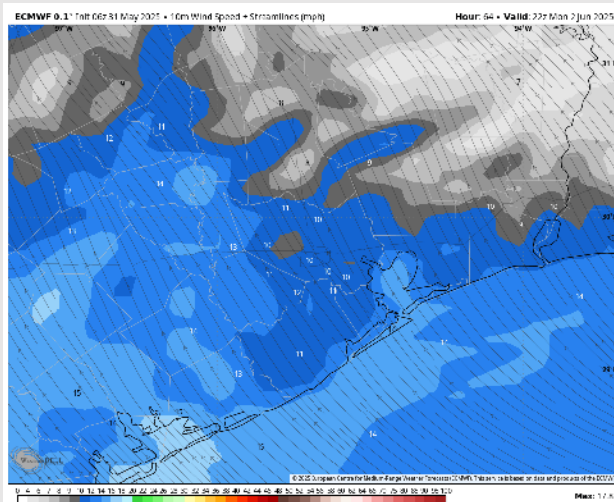
**High Temps:** **N of Morgan's Point:** Low 90s F. **S of Morgan's Point:** Mid 80s F.

**Visibility:** No visibility concerns Monday.

## Precip Image: 3 PM CT



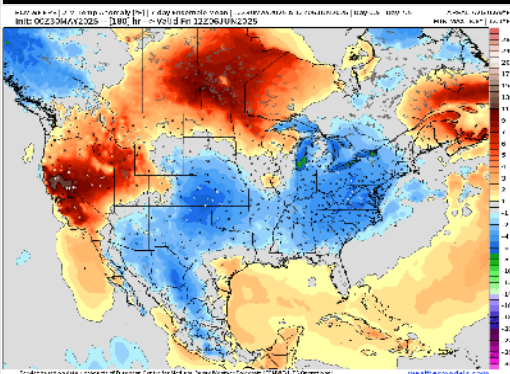
Wind Speed  
5 PM CT



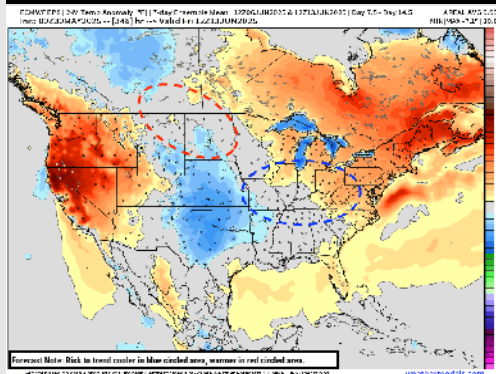
High Temps  
Monday

# Houston Pilots: 5/31/25

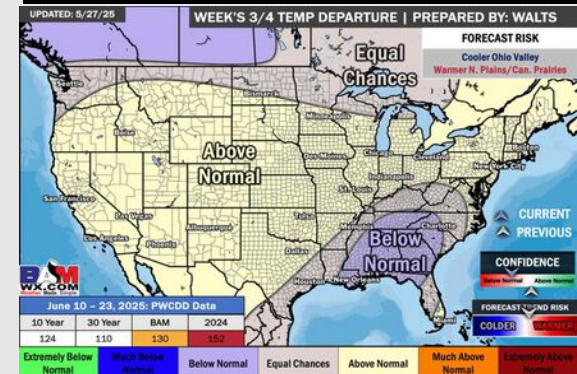
## Next 7 Day Temperature Departure



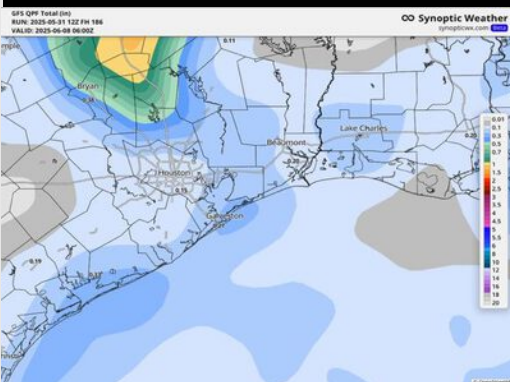
## 8-14 Day Temperature Departure



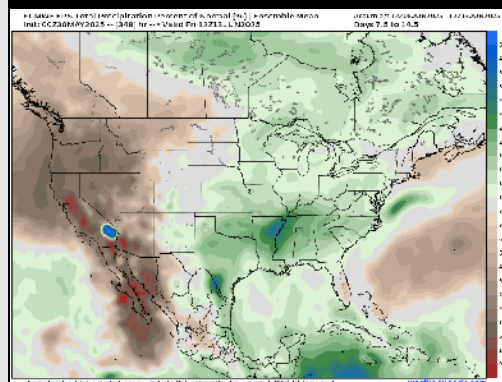
## 15-30 Day Temperature Departure



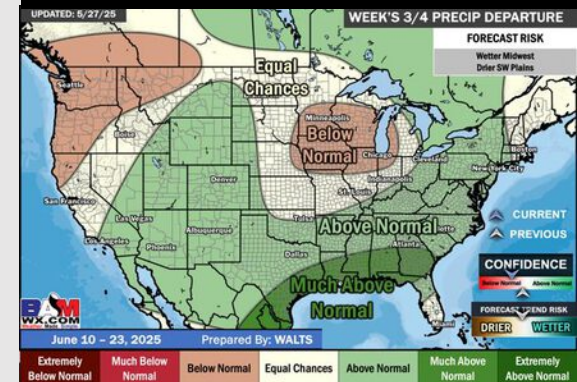
## Next 7 Day Total Precipitation



## 8-14 Day % of Average Precip.



## 15-30 Day % of Average Precip.



- Temps are expected to be slightly above normal the next 7 days. Scattered rain chances throughout the week.
- Near normal temps and well above normal rainfall is favored for days 8 – 14.
- Slightly below normal temperatures are favored for mid to late June along with much above normal rainfall chances.