

# Houston Pilots Forecast Package



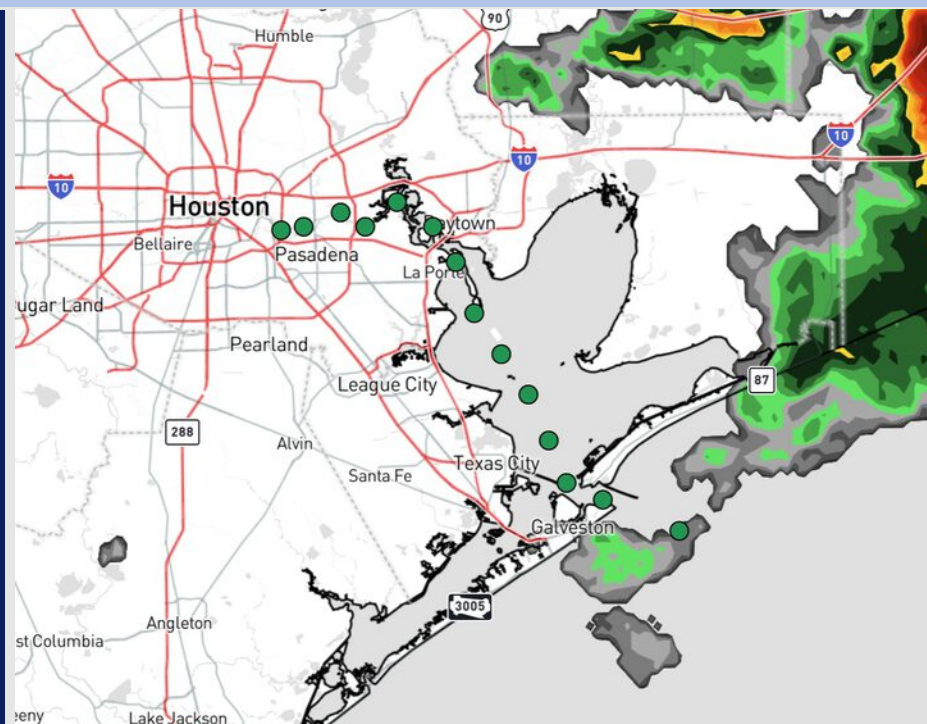
Updated: 1:55 PM CT

Friday, May 30, 2025

Forecaster: Tyler Riggles

## Weather Headlines

- Hit/miss shower risks expected to linger for all Stations through 5 PM.
- Calm winds expected over the next 72 hours outside of scattered storms.
- **Monitoring an isolated non-sea fog risk for Sunday AM.**



Current Radar: 1:52 PM CT

As always, please do not hesitate to reach out to us with any forecast questions at **(317)-560-8122**. Press **1** for forecast questions.

You can also access real-time forecast updates and 24/7 meteorological chat assistance on your **Clarity** app. Click [here](#) for login assistance.



# Houston Pilots Visibility Chart (miles)



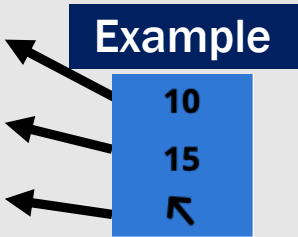
Visibility	Fri 3 pm	Fri 4 pm	Fri 5 pm	Fri 6 pm	Fri 7 pm	Fri 8 pm	Fri 9 pm	Fri 10 pm	Fri 11 pm	Sat 12 am	Sat 1 am	Sat 2 am	Sat 3 am	Sat 4 am	Sat 5 am	Sat 6 am	Sat 7 am	Sat 8 am	Sat 9 am	Sat 10 am	Sat 11 am	Sat 12 pm	Sat 1 pm	Sat 2 pm
Houston Pilots N - 610 Bridge	10	10	10	10	10	10	10	10	10	10	10	10	10	9	9	9	9	6.9	9	10	10	10	10	10
Houston Pilots M - Kinder 1	10	10	10	10	10	10	10	10	10	10	10	10	10	9	9	9	9	6.9	9	10	10	10	10	10
Houston Pilots L - Greens Bayou	10	10	10	10	10	10	10	10	10	10	10	10	10	9	9	9	9	6.9	9	10	10	10	10	10
Houston Pilots K - Shell Crude	10	10	10	10	10	10	10	10	10	10	10	10	10	9	9	9	9	6.9	9	10	10	10	10	10
Houston Pilots J - Lynchburg Ferries	10	10	10	10	10	10	10	10	10	10	10	10	10	9	7.9	7.9	9	6.9	9	10	10	10	10	10
Houston Pilots I - Exxon 3	10	10	10	10	10	10	10	10	10	10	10	10	10	9	7.9	9	9	6.9	9	10	10	10	10	10
Houston Pilots H - Morgans Point	10	10	10	10	10	10	10	10	10	10	10	10	10	9	9	9	9	6.9	9	10	10	10	10	10
Houston Pilots G - 75/76	10	10	10	10	10	10	10	10	10	10	10	10	10	10	10	10	10	9	10	10	10	10	10	10
Houston Pilots F - 63/64	10	10	10	10	10	10	10	10	10	10	10	10	10	10	10	10	10	9	10	10	10	10	10	10
Houston Pilots E - 51/52	10	10	10	10	10	10	10	10	10	10	10	10	10	10	10	10	10	10	10	10	10	10	10	10
Houston Pilots D - 37/38	10	10	10	10	10	10	10	10	10	10	10	10	10	10	10	10	10	10	10	10	10	10	10	10
Houston Pilots C - 25/26	10	10	10	10	10	10	10	10	10	10	10	10	10	10	10	10	10	10	10	10	10	10	10	10
Houston Pilots B - 11/12	9	10	10	10	10	10	10	10	10	10	10	10	10	10	10	10	10	10	10	10	10	10	10	10
Houston Pilots A - 1 & 2 Bravo	6.9	10	10	10	10	10	10	10	10	10	10	10	10	10	10	10	10	10	10	10	9	7.9	7.9	10

NOTE: This is automated data that may/may not agree with the official BAM thinking that’s found on the daily slides or special visibility report slides. This data should be used as a guide only

# Houston Pilots Wind Chart



Sustained Wind 10 Knots  
Gusts 15 Knots  
Wind from the SE



Wind	Fri 3 pm	Fri 4 pm	Fri 5 pm	Fri 6 pm	Fri 7 pm	Fri 8 pm	Fri 9 pm	Fri 10 pm	Fri 11 pm	Sat 12 am	Sat 1 am	Sat 2 am	Sat 3 am	Sat 4 am	Sat 5 am	Sat 6 am	Sat 7 am	Sat 8 am	Sat 9 am	Sat 10 am	Sat 11 am	Sat 12 pm	Sat 1 pm	Sat 2 pm
Houston Pilots N - 610 Bridge	6 10 ↘	6 12 ↓	6 12 ↓	6 12 ↓	6 10 ↓	6 10 ↓	5 9 ✓	3 8 ✓	3 7 ✓	3 7 ✓	3 7 ✓	3 7 ↓	3 8 ↓	3 5 ↓	3 8 ↓	5 9 ✓	5 9 ✓	6 10 ✓	5 9 ✓	5 8 ✓	5 9 ✓	5 8 ✓	3 8 ✓	5 8 ✓
Houston Pilots M - Kinder 1	6 10 ↘	6 12 ↓	6 12 ↓	6 12 ↓	6 10 ↓	6 10 ↓	5 9 ✓	3 8 ✓	3 7 ✓	3 7 ✓	3 7 ✓	3 8 ↓	3 8 ↓	3 5 ↓	3 8 ↓	5 9 ✓	5 9 ✓	5 10 ✓	5 9 ✓	5 8 ✓	5 9 ✓	5 8 ✓	5 8 ✓	5 8 ✓
Houston Pilots L - Greens Bayou	6 10 ↘	6 12 ↓	6 10 ↓	6 12 ↓	6 10 ↓	6 9 ↓	5 8 ✓	3 7 ✓	3 7 ✓	3 7 ✓	3 7 ✓	3 7 ↓	3 7 ↓	3 8 ↓	3 8 ↓	5 9 ✓	5 10 ✓	5 5 ✓	5 9 ✓	5 8 ✓	5 9 ✓	5 8 ✓	5 8 ✓	3 8 ✓
Houston Pilots K - Shell Crude	6 10 ↘	6 10 ↓	6 10 ↓	6 12 ↓	6 10 ↓	5 9 ↓	3 8 ✓	3 7 ✓	3 7 ✓	3 7 ✓	3 7 ↓	3 7 ↓	3 7 ↓	3 8 ↓	3 8 ↓	5 9 ✓	5 10 ✓	5 5 ✓	5 9 ✓	5 8 ✓	5 9 ✓	5 8 ✓	5 8 ✓	5 8 ✓
Houston Pilots J - Lynchburg Ferries	6 10 ↘	6 10 ↓	6 10 ↓	6 12 ↓	6 10 ↓	5 10 ↓	3 8 ✓	3 7 ✓	3 7 ✓	3 7 ✓	3 7 ↓	3 7 ↓	3 7 ↓	3 8 ↓	3 8 ↓	3 8 ✓	3 9 ✓	5 9 ✓	3 8 ✓	3 8 ✓	5 9 ✓	5 8 ✓	5 8 ✓	3 8 ✓
Houston Pilots I - Exxon 3	6 10 ↘	7 12 ↙	7 12 ↓	8 13 ↓	8 12 ↓	8 10 ↓	6 10 ✓	6 9 ✓	6 8 ✓	6 8 ✓	6 8 ✓	6 9 ↓	6 9 ↓	6 10 ↓	6 10 ↓	6 7 ✓	7 12 ✓	7 12 ✓	7 10 ✓	6 9 ✓	6 10 ✓	6 9 ✓	5 9 ✓	5 9 ✓
Houston Pilots H - Morgans Point	6 10 ↘	6 12 ↙	7 12 ↓	7 13 ↓	7 12 ↓	7 10 ↓	6 9 ✓	6 8 ✓	6 8 ✓	6 8 ✓	6 8 ✓	6 9 ↓	6 9 ↓	6 10 ↓	7 10 ↓	7 10 ↓	7 12 ✓	8 12 ✓	7 12 ✓	6 10 ✓	6 10 ✓	6 9 ✓	6 9 ✓	5 9 ✓
Houston Pilots G - 75/76	6 10 ↘	6 12 ↙	7 13 ↓	7 13 ↓	8 12 ↓	8 12 ↓	7 10 ✓	6 9 ✓	6 9 ✓	6 8 ✓	6 7 ✓	7 9 ↓	7 10 ↓	8 10 ↓	8 12 ↓	8 13 ↓	8 13 ↓	9 14 ✓	8 13 ✓	8 12 ✓	7 12 ✓	6 12 ✓	6 10 ✓	6 10 ↙
Houston Pilots F - 63/64	6 10 ↘	6 12 ↙	6 12 ↓	7 12 ↓	7 12 ↓	8 10 ↓	7 10 ✓	6 9 ✓	6 9 ✓	6 9 ✓	6 10 ✓	7 10 ✓	7 10 ✓	8 12 ✓	8 12 ✓	8 13 ✓	9 14 ✓	10 15 ✓	8 14 ✓	8 12 ✓	8 13 ✓	7 12 ✓	6 10 ✓	6 10 ✓
Houston Pilots E - 51/52	6 10 ↘	6 10 ✓	6 10 ↓	6 12 ↓	6 10 ↓	7 10 ↓	6 9 ✓	6 9 ✓	6 9 ✓	6 8 ✓	6 9 ✓	7 10 ✓	7 10 ✓	8 12 ✓	8 12 ✓	8 13 ✓	9 14 ✓	10 15 ✓	9 14 ✓	8 13 ✓	8 13 ✓	7 12 ✓	6 10 ✓	6 10 ✓
Houston Pilots D - 37/38	6 10 ↘	6 10 ✓	6 10 ↓	6 10 ↓	6 10 ↓	7 9 ✓	6 9 ✓	6 9 ✓	6 8 ✓	6 8 ✓	6 9 ✓	7 9 ✓	7 10 ✓	8 10 ✓	8 12 ✓	8 13 ✓	9 14 ✓	10 15 ✓	9 14 ✓	8 13 ✓	8 13 ✓	8 13 ✓	7 12 ✓	6 10 ✓
Houston Pilots C - 25/26	6 9 ↘	6 9 ↓	6 9 ↓	6 10 ↓	6 9 ↓	6 9 ✓	6 9 ✓	6 8 ✓	5 8 ✓	6 8 ✓	6 9 ✓	6 9 ✓	7 10 ✓	7 10 ✓	8 12 ✓	8 13 ✓	9 13 ✓	10 15 ✓	9 14 ✓	8 13 ✓	8 13 ✓	8 13 ✓	7 12 ✓	6 10 ✓
Houston Pilots B - 11/12	6 8 ↘	5 8 ↓	5 8 ↓	5 9 ↓	6 8 ↓	6 8 ✓	6 8 ✓	5 7 ✓	5 7 ✓	5 7 ✓	6 8 ✓	6 9 ✓	6 9 ✓	6 10 ✓	7 12 ✓	7 12 ✓	8 13 ✓	8 14 ✓	8 13 ✓	8 13 ✓	8 13 ✓	8 12 ✓	7 10 ✓	6 10 ✓
Houston Pilots A - 1 & 2 Bravo	5 8 ↘	5 8 ↓	5 8 ↓	6 9 ↓	6 8 ↓	6 8 ✓	6 9 ✓	6 9 ✓	6 8 ✓	6 8 ✓	6 9 ✓	7 9 ✓	7 10 ✓	8 12 ✓	8 13 ✓	8 13 ✓	9 14 ✓	10 15 ✓	9 14 ✓	9 14 ✓	8 13 ✓	8 13 ✓	7 10 ✓	6 10 ✓

NOTE: This is automated data that may/may not agree with the official BAM thinking that's found on the daily slides.  
This data should be used as a guide only.

# Houston Pilots: FRI. 5/30/2025

## Forecast Discussion

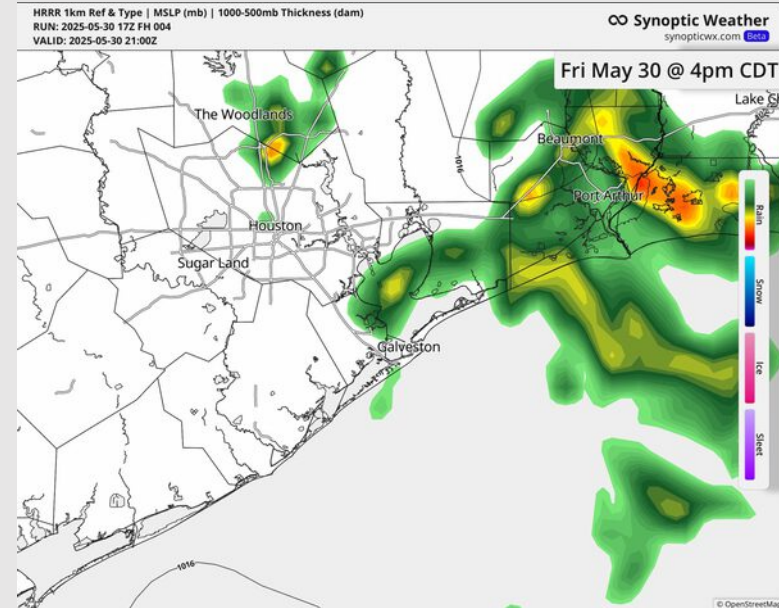
**Precip:** Risks for hit/miss (30-40%) showers expected to fully exit Stations by 5 PM.

**Wind:** Winds will be variable, with a tendency to be out of the NE for the remainder of the day. **N of Morgan's Point:** Winds will be at 2 – 7 kts through the remainder of the day. **S of Morgan's Point:** Winds will be at 3 – 8 kts through the remainder of the day.

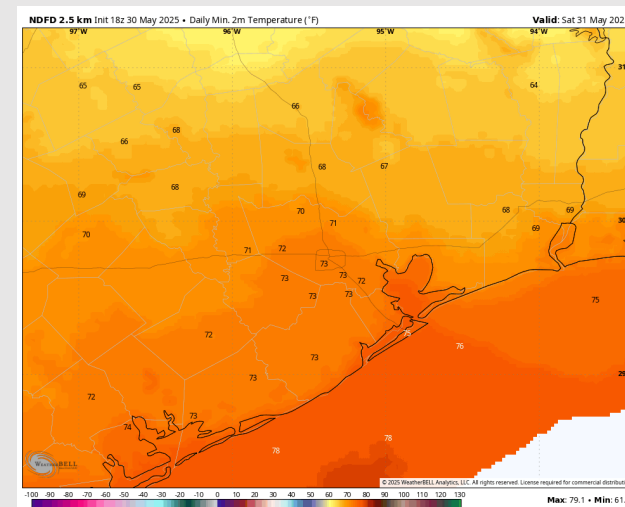
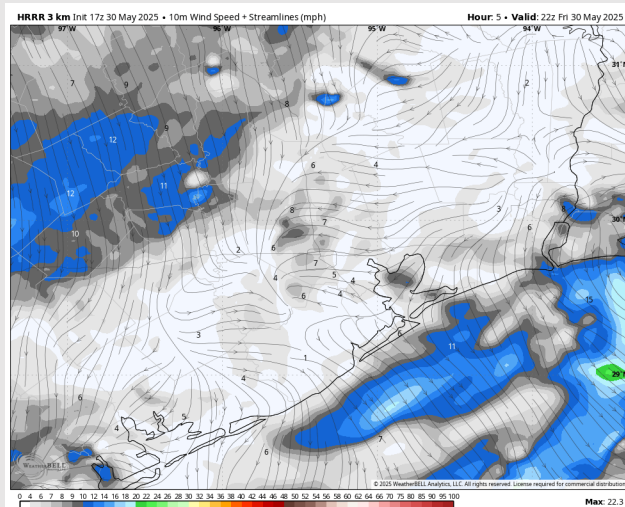
**Low Temps:** **N of Morgan's Point:** Low 70s F. **S of Morgan's Point:** Mid 70s F.

**Visibility:** No visibility concerns for the rest of the day.

## Precip Image: 4 PM CT



Wind Speed  
5 PM CT



Low Temps  
SAT AM



# Houston Pilots: SAT. 5/31/2025

## Forecast Discussion

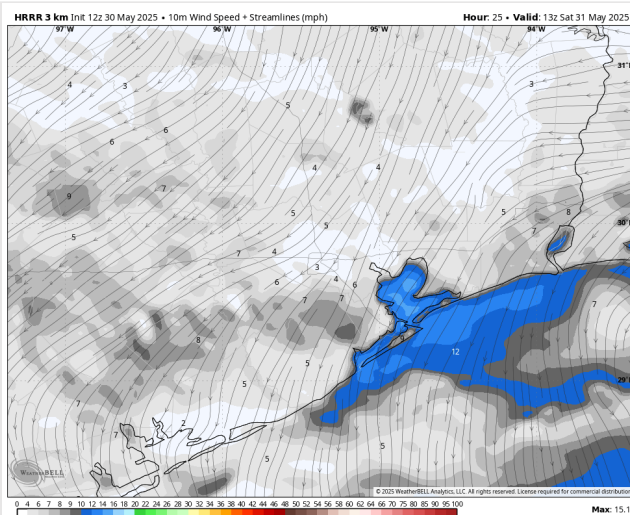
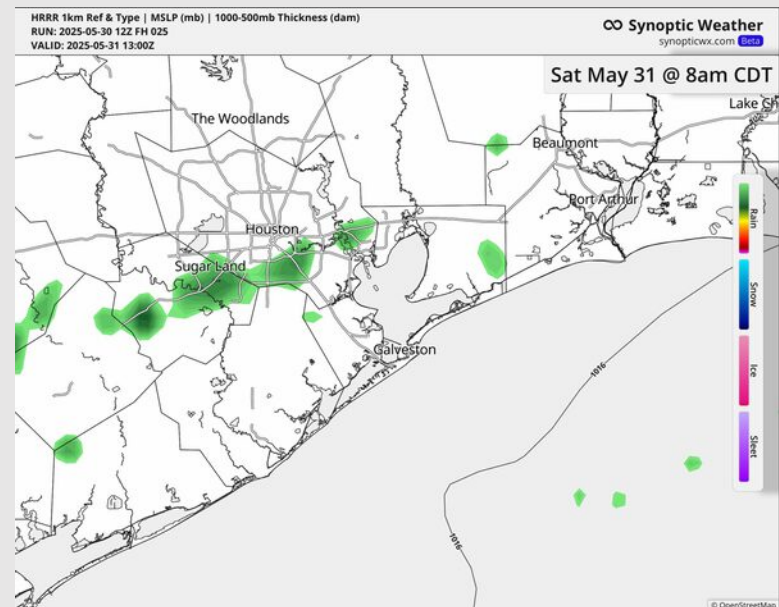
**Precip:** A few isolated showers are possible from 6 AM – 12 PM, but otherwise, favoring mostly dry conditions.

**Wind:** Variable winds will settle out of the NE by 5 AM and will become variable again after 7 PM. **N of Morgan's Point:** Winds will be at 2 – 7 kts. **S of Morgan's Point:** Winds will be at 5 – 10 kts throughout the day.

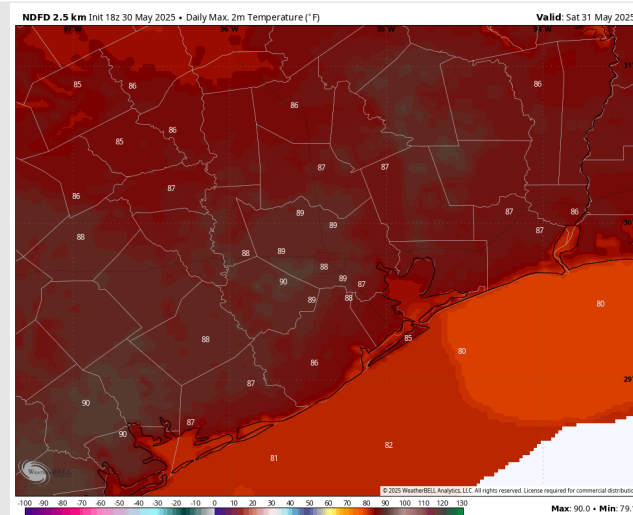
**High Temps:** **N of Morgan's Point:** Upper 80s F. **S of Morgan's Point:** Low to Mid 80s F.

**Visibility:** No visibility concerns Saturday.

## Precip Image: 8 AM CT



Wind Speed:  
8 AM CT



High Temps  
Saturday

# Houston Pilots: SUN. 6/1/2025

## Forecast Discussion

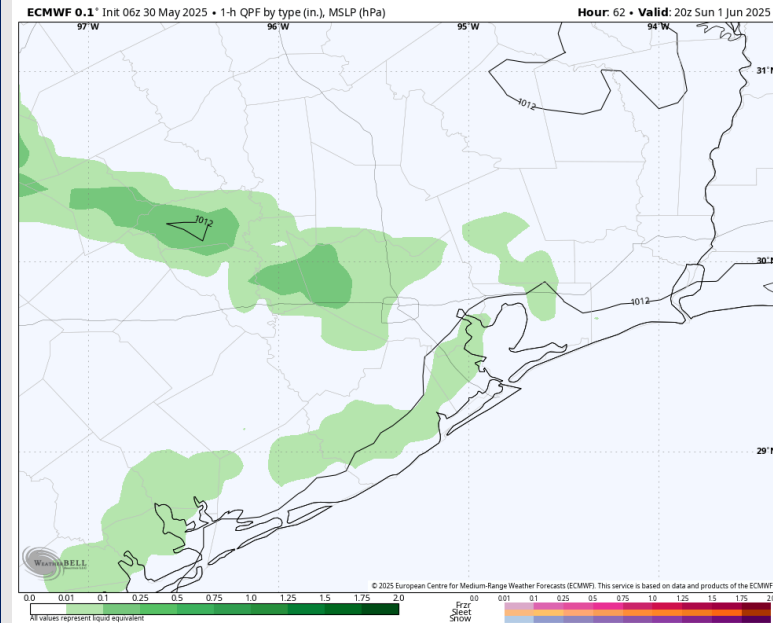
**Precip:** Hit/miss (30-40%) showers and storms possible Sunday from 2PM – 7PM.

**Wind:** Variable winds will quick settle out of the W/SW after 2 AM. Winds will then shift out of the S by 3 PM. **N of Morgan's Point:** Winds will be at 2 – 7 kts. **S of Morgan's Point:** Winds will be at 5 – 10 kts.

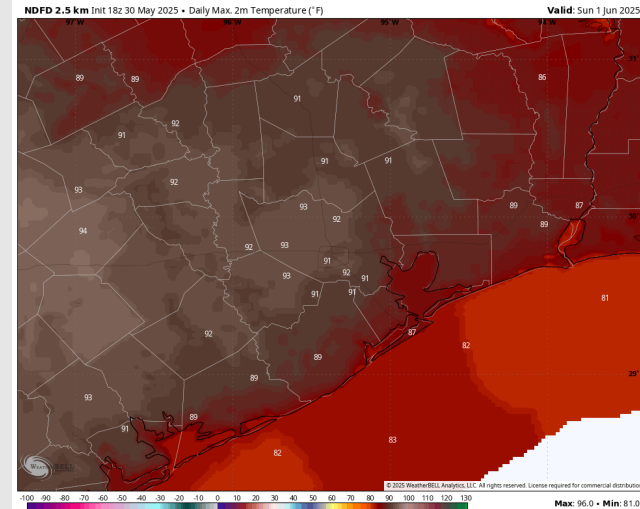
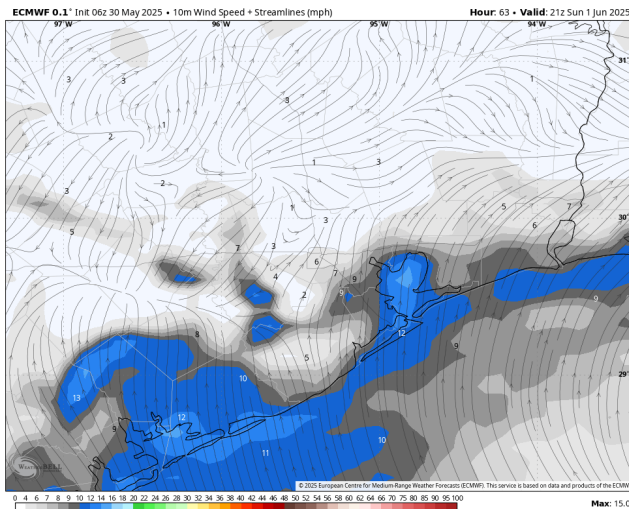
**High Temps:** **N of Morgan's Point:** Mid 90s F. **S of Morgan's Point:** Mid 80s F.

**Visibility:** Monitoring the risk for isolated non-sea fog for Stations N of Morgan's Point on Sunday.

## Precip Image: 3 PM CT



**Wind Speed:**  
4 PM CT

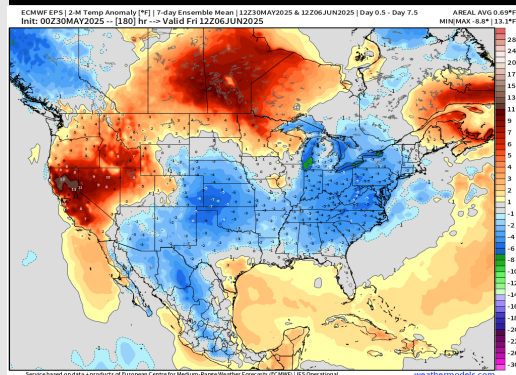


**High Temps**  
**Sunday**

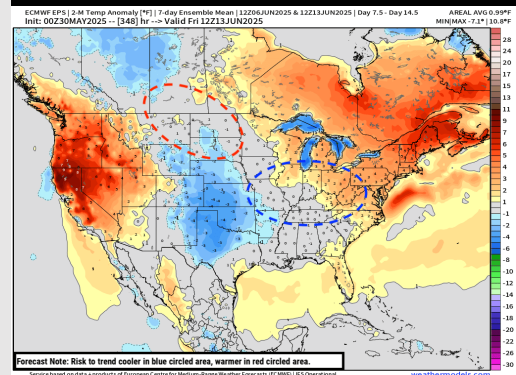


# Houston Pilots: 5/30/25

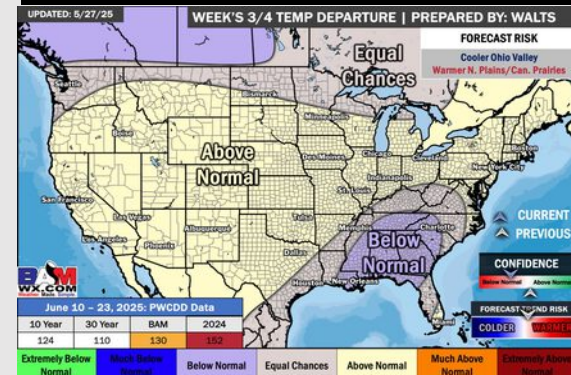
## Next 7 Day Temperature Departure



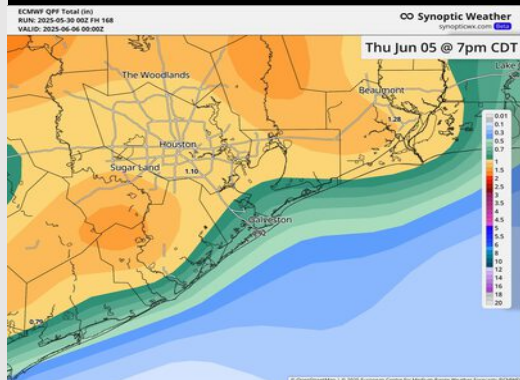
## 8-14 Day Temperature Departure



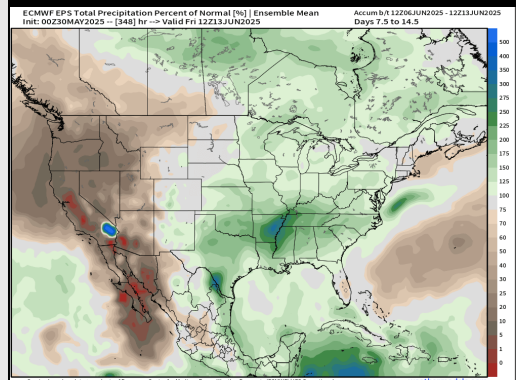
## 15-30 Day Temperature Departure



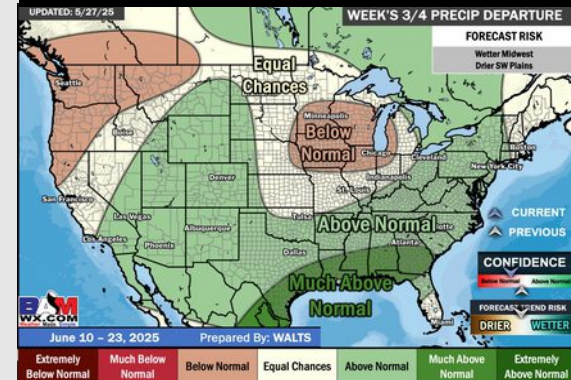
## Next 7 Day Total Precipitation



## 8-14 Day % of Average Precip.



## 15-30 Day % of Average Precip.



- Temps are expected to be slightly above normal the next 7 days. Scattered rain chances throughout the week.
- Near normal temps and well above normal rainfall is favored for days 8 – 14.
- Slightly below normal temperatures are favored for mid to late June.