

Houston Pilots Forecast Package



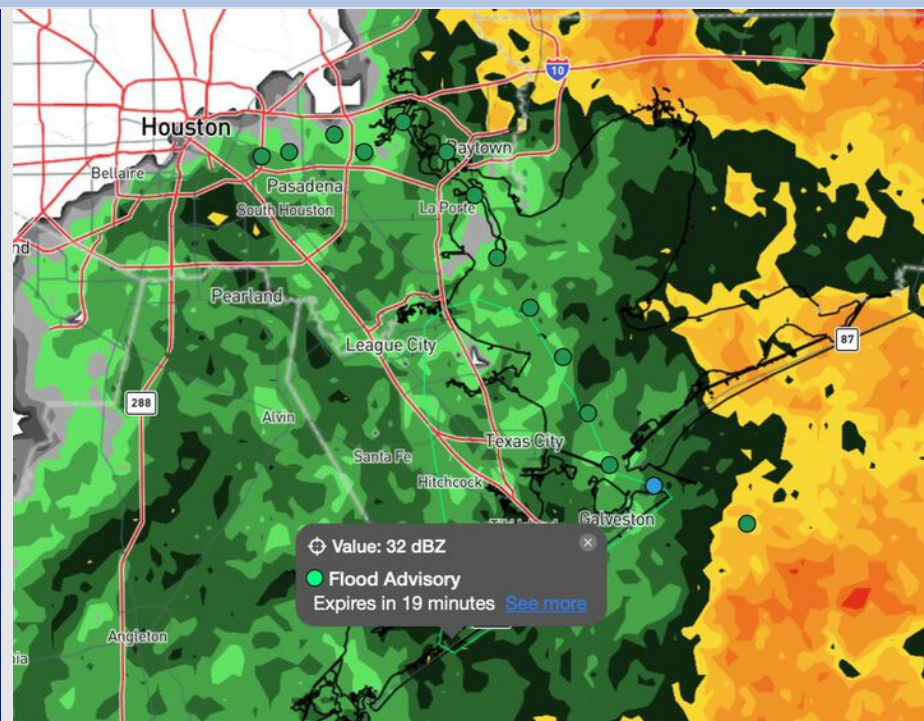
Updated: 1:25 PM CT

Wednesday, May 28, 2025

Forecaster: Hope Kleitsch

Weather Headlines

- A few strong storms will be possible THU PM and FRI PM.
- Choppy waters of 3– 4' wave heights will be possible at the Boarding Station through THU PM.
- Monitoring a patchy non-sea fog/mist for FRI AM.



Current Radar: 1:25 PM CT

As always, please do not hesitate to reach out to us with any forecast questions at (317)-560-8122. Press 1 for forecast questions.

You can also access real-time forecast updates and 24/7 meteorological chat assistance on your [Clarity](#) app. Click [here](#) for login assistance.



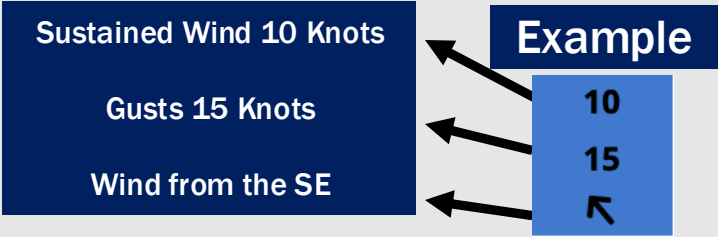
Houston Pilots Visibility Chart (miles)



Visibility	Wed 3 pm	Wed 4 pm	Wed 5 pm	Wed 6 pm	Wed 7 pm	Wed 8 pm	Wed 9 pm	Wed 10 pm	Wed 11 pm	Thu 12 am	Thu 1 am	Thu 2 am	Thu 3 am	Thu 4 am	Thu 5 am	Thu 6 am	Thu 7 am	Thu 8 am	Thu 9 am	Thu 10 am	Thu 11 am	Thu 12 pm	Thu 1 pm	Thu 2 pm
Houston Pilots N - 610 Bridge	4.9	7.9	7.9	10	10	10	10	10	10	10	10	10	10	10	6.9	6.9	6.9	5.9	5.9	6.9	9	10	10	10
Houston Pilots M - Kinder 1	4.9	7.9	7.9	9	10	10	10	10	10	10	10	10	10	10	6.9	6.9	6.9	4.9	4.9	6.9	7.9	10	10	10
Houston Pilots L - Greens Bayou	4.9	6.9	6.9	9	10	10	10	10	10	10	10	9	9	9	6.9	6.9	5.9	4.9	4.9	5.9	6.9	9	10	10
Houston Pilots K - Shell Crude	4.9	6.9	6.9	9	10	10	10	10	10	10	10	9	9	9	6.9	6.9	5.9	4.9	4.9	5.9	6.9	9	10	10
Houston Pilots J - Lynchburg Ferries	4.9	6.9	6.9	7.9	10	10	10	10	10	10	10	9	9	9	6.9	6.9	5.9	4.9	4.9	5.9	6.9	9	10	10
Houston Pilots I - Exxon 3	4.9	6.9	6.9	7.9	10	10	10	10	10	10	9	9	9	9	6.9	6.9	5.9	4.9	4.9	5.9	6.9	9	10	10
Houston Pilots H - Morgans Point	4.9	6.9	6.9	9	10	10	10	10	10	10	9	9	9	7.9	6.9	6.9	5.9	4.9	4.9	5.9	6.9	9	10	9
Houston Pilots G - 75/76	4.9	5.9	6.9	6.9	6.9	6.9	6.9	6.9	6.9	6.9	6.9	6.9	6.9	7.9	6.9	6.9	5.9	4.9	4.9	4.9	5.9	6.9	10	10
Houston Pilots F - 63/64	3.9	5.9	6.9	6.9	6.9	6.9	6.9	6.9	6.9	6.9	6.9	6.9	6.9	7.9	6.9	6.9	6.9	4.9	4.9	4.9	5.9	6.9	10	10
Houston Pilots E - 51/52	3.9	6.9	6.9	6.9	6.9	7.9	6.9	6.9	6.9	6.9	6.9	6.9	6.9	7.9	6.9	6.9	6.9	4.9	4.9	4.9	5.9	6.9	10	10
Houston Pilots D - 37/38	3.9	6.9	6.9	6.9	6.9	7.9	6.9	6.9	6.9	6.9	6.9	6.9	7.9	7.9	6.9	6.9	6.9	5.9	4.9	4.9	5.9	6.9	10	10
Houston Pilots C - 25/26	3.9	6.9	7.9	6.9	7.9	7.9	6.9	7.9	6.9	7.9	6.9	6.9	9	10	7.9	7.9	7.9	5.9	4.9	5.9	6.9	6.9	10	10
Houston Pilots B - 11/12	3.9	5.9	7.9	6.9	7.9	9	6.9	7.9	6.9	6.9	6.9	7.9	9	10	7.9	9	7.9	5.9	4.9	5.9	6.9	6.9	10	10
Houston Pilots A - 1 & 2 Bravo	3	3.9	6.9	7.9	7.9	9	6.9	6.9	6.9	6.9	6.9	7.9	9	9	7.9	9	7.9	5.9	4.9	5.9	6.9	6.9	10	10

NOTE: This is automated data that may/may not agree with the official BAM thinking that's found on the daily slides or special visibility report slides. This data should be used as a guide only

Houston Pilots Wind Chart



Wind	Wed 3 pm	Wed 4 pm	Wed 5 pm	Wed 6 pm	Wed 7 pm	Wed 8 pm	Wed 9 pm	Wed 10 pm	Wed 11 pm	Thu 12 am	Thu 1 am	Thu 2 am	Thu 3 am	Thu 4 am	Thu 5 am	Thu 6 am	Thu 7 am	Thu 8 am	Thu 9 am	Thu 10 am	Thu 11 am	Thu 12 pm	Thu 1 pm	Thu 2 pm
Houston Pilots N - 610 Bridge	8 16 ↖	8 15 ↖	8 16 ↖	8 15 ↖	8 15 ↖	7 13 ↖	6 13 ↖	6 12 ↖	6 12 ↖	6 10 ↖	6 10 ↖	6 10 ↖	5 10 ↖	5 9 ↖	3 9 ↖	3 8 ↖	3 8 ↖	3 8 ↖	5 9 ↖	5 10 ↖	6 12 ↖	6 13 ↖	7 14 ↖	7 14 ↖
Houston Pilots M - Kinder 1	8 16 ↖	8 15 ↖	8 16 ↖	8 15 ↖	8 15 ↖	7 13 ↖	6 13 ↖	6 12 ↖	6 12 ↖	6 10 ↖	6 10 ↖	6 10 ↖	5 10 ↖	5 9 ↖	3 9 ↖	3 8 ↖	3 8 ↖	3 8 ↖	5 9 ↖	5 10 ↖	6 12 ↖	6 13 ↖	7 14 ↖	7 14 ↖
Houston Pilots L - Greens Bayou	8 15 ↖	8 15 ↖	8 16 ↖	8 15 ↖	7 14 ↖	7 13 ↖	6 13 ↖	6 12 ↖	6 12 ↖	6 10 ↖	6 10 ↖	6 10 ↖	5 10 ↖	5 9 ↖	5 9 ↖	3 8 ↖	3 8 ↖	3 8 ↖	5 9 ↖	5 10 ↖	6 12 ↖	6 13 ↖	7 14 ↖	7 14 ↖
Houston Pilots K - Shell Crude	8 16 ↖	8 15 ↖	8 16 ↖	8 15 ↖	7 14 ↖	7 13 ↖	6 13 ↖	6 12 ↖	6 12 ↖	6 10 ↖	6 10 ↖	6 10 ↖	5 10 ↖	5 9 ↖	5 9 ↖	3 8 ↖	3 8 ↖	3 8 ↖	5 9 ↖	5 10 ↖	6 12 ↖	6 13 ↖	7 14 ↖	7 14 ↖
Houston Pilots J - Lynchburg Ferries	8 15 ↖	8 15 ↖	8 16 ↖	8 15 ↖	7 15 ↖	7 13 ↖	6 13 ↖	6 12 ↖	6 12 ↖	5 10 ↖	5 10 ↖	5 10 ↖	5 9 ↖	5 9 ↖	3 8 ↖	3 8 ↖	3 8 ↖	3 8 ↖	5 9 ↖	5 9 ↖	6 12 ↖	7 13 ↖	7 14 ↖	8 14 ↖
Houston Pilots I - Exxon 3	8 16 ↖	8 16 ↖	8 17 ↖	8 16 ↖	7 15 ↖	7 14 ↖	6 13 ↖	6 13 ↖	6 13 ↖	5 13 ↖	5 13 ↖	5 14 ↖	5 13 ↖	5 12 ↖	3 12 ↖	3 12 ↖	3 10 ↖	3 10 ↖	5 12 ↖	5 12 ↖	6 13 ↖	7 14 ↖	7 14 ↖	8 15 ↖
Houston Pilots H - Morgans Point	9 16 ↖	10 16 ↖	10 17 ↖	10 16 ↖	10 15 ↖	9 14 ↖	9 13 ↖	8 13 ↖	8 13 ↖	8 14 ↖	8 14 ↖	8 14 ↖	8 13 ↖	8 12 ↖	8 12 ↖	7 12 ↖	7 12 ↖	7 12 ↖	7 12 ↖	8 13 ↖	8 13 ↖	8 14 ↖	8 15 ↖	8 15 ↖
Houston Pilots G - 75/76	10 17 ↖	10 17 ↖	10 18 ↖	10 18 ↖	10 16 ↖	10 16 ↖	10 15 ↖	10 15 ↖	10 15 ↖	10 15 ↖	10 16 ↖	10 16 ↖	10 15 ↖	10 15 ↖	9 14 ↖	9 14 ↖	9 14 ↖	9 14 ↖	9 14 ↖	9 14 ↖	9 15 ↖	9 16 ↖	9 16 ↖	9 16 ↖
Houston Pilots F - 63/64	10 17 ↖	10 17 ↖	10 18 ↖	10 18 ↖	10 16 ↖	10 16 ↖	10 15 ↖	10 15 ↖	10 15 ↖	10 16 ↖	10 16 ↖	12 16 ↖	10 16 ↖	10 15 ↖	10 15 ↖	10 15 ↖	9 15 ↖	9 14 ↖	9 15 ↖	9 15 ↖	10 16 ↖	10 16 ↖	9 16 ↖	10 16 ↖
Houston Pilots E - 51/52	10 17 ↖	10 17 ↖	10 18 ↖	10 17 ↖	10 16 ↖	10 16 ↖	10 15 ↖	10 15 ↖	10 16 ↖	12 16 ↖	12 17 ↖	12 17 ↖	12 17 ↖	10 16 ↖	10 16 ↖	10 15 ↖	10 15 ↖	10 15 ↖	10 15 ↖	10 15 ↖	10 16 ↖	10 16 ↖	10 17 ↖	10 17 ↖
Houston Pilots D - 37/38	10 17 ↖	10 17 ↖	10 17 ↖	10 17 ↖	10 16 ↖	10 15 ↖	10 15 ↖	10 15 ↖	10 16 ↖	12 16 ↖	12 17 ↖	12 17 ↖	12 17 ↖	12 16 ↖	10 16 ↖	10 15 ↖	10 15 ↖	10 16 ↖	10 15 ↖	10 15 ↖	10 15 ↖	10 17 ↖	10 17 ↖	10 17 ↖
Houston Pilots C - 25/26	10 17 ↖	10 17 ↖	10 17 ↖	10 16 ↖	10 15 ↖	10 15 ↖	10 15 ↖	10 15 ↖	10 15 ↖	10 16 ↖	12 16 ↖	12 17 ↖	12 16 ↖	10 16 ↖	10 16 ↖	10 15 ↖	10 15 ↖	10 16 ↖	10 15 ↖	10 15 ↖	10 15 ↖	10 16 ↖	10 16 ↖	10 16 ↖
Houston Pilots B - 11/12	10 16 ↖	10 15 ↖	10 16 ↖	10 15 ↖	10 15 ↖	9 14 ↖	9 14 ↖	9 15 ↖	9 15 ↖	10 16 ↖	10 16 ↖	10 16 ↖	10 16 ↖	10 16 ↖	10 16 ↖	10 15 ↖	10 15 ↖	10 15 ↖	10 15 ↖	10 15 ↖	10 15 ↖	10 16 ↖	10 16 ↖	10 16 ↖
Houston Pilots A - 1 & 2 Bravo	10 15 ↖	10 15 ↖	10 16 ↖	10 15 ↖	10 15 ↖	10 15 ↖	10 16 ↖	10 16 ↖	12 16 ↖	12 17 ↖	13 17 ↖	13 17 ↖	13 17 ↖	13 17 ↖	13 17 ↖	12 17 ↖	12 16 ↖	12 16 ↖	12 16 ↖	10 16 ↖	10 16 ↖	10 16 ↖	10 16 ↖	10 16 ↖

NOTE: This is automated data that may/may not agree with the official BAM thinking that's found on the daily slides.
This data should be used as a guide only.

Houston Pilots: WED. 5/28/2025

Forecast Discussion

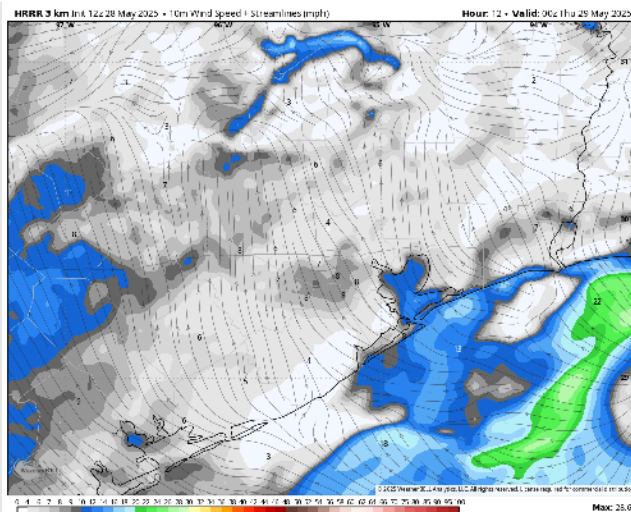
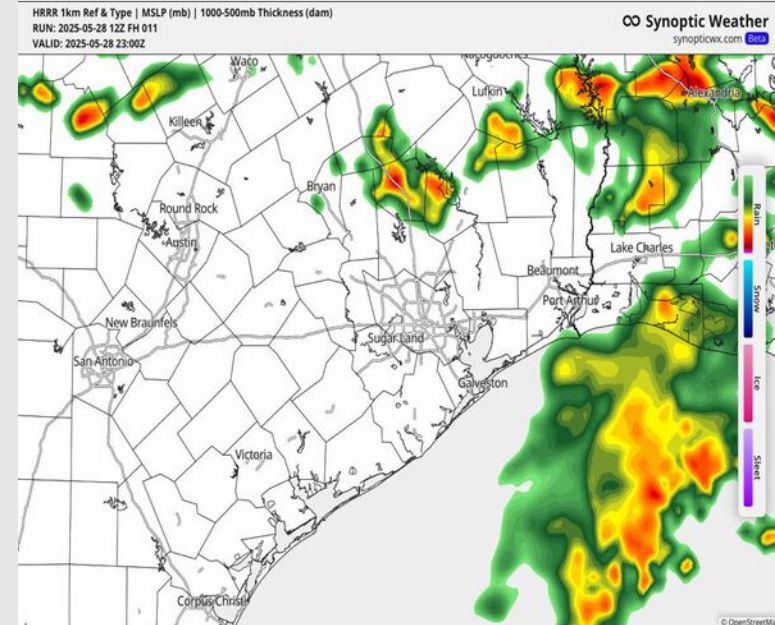
Precip: Widespread rain/storms will become more scattered after 3PM. Rain finally clears out of the region after 5PM with dry conditions favored the rest of the day.

Wind: Winds will be rather variable through 4PM. From 4PM onward, winds will establish out of the ESE. **N of Morgan's Point:** Winds will be at 4 – 9 kts the rest of the day. **S of Morgan's Point:** Winds will be at 5 – 10 kts the remainder of the day. **Non-thunderstorm wind gusts up to 23 kts will be possible for all Stations through 8PM.**

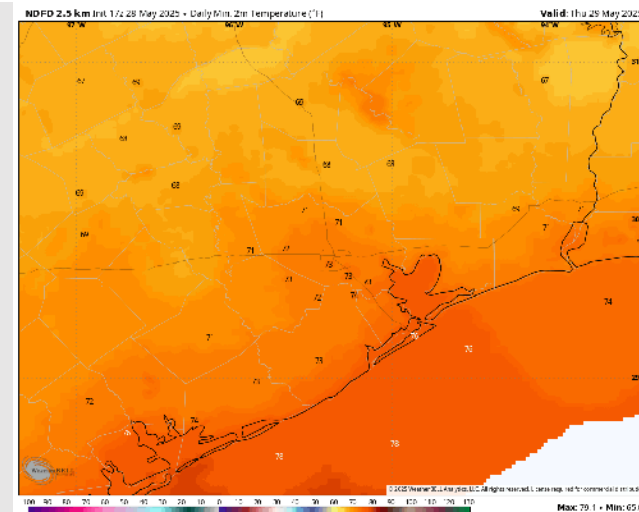
Low Temps: **N of Morgan's Point:** Low 70s F. **S of Morgan's Point:** Mid 70s F.

Visibility: No fog concerns for today, however visibilities may be reduced under heavy downpours.

Precip Image: 6 PM CT



Wind Speed:
7 PM CT



Low Temps
THU AM

Houston Pilots: THU. 5/29/2025

Forecast Discussion

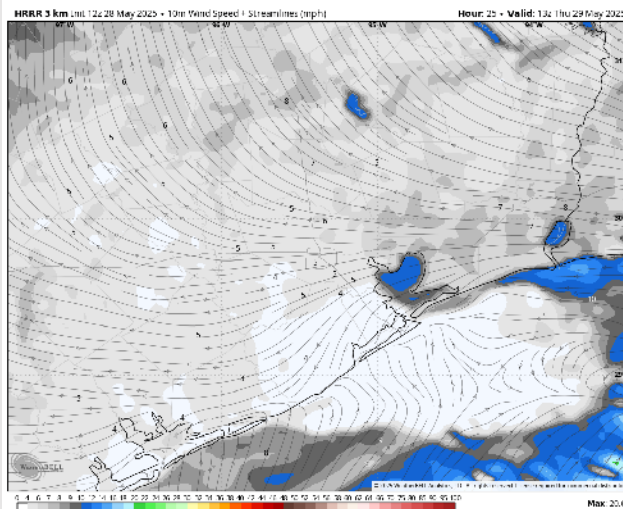
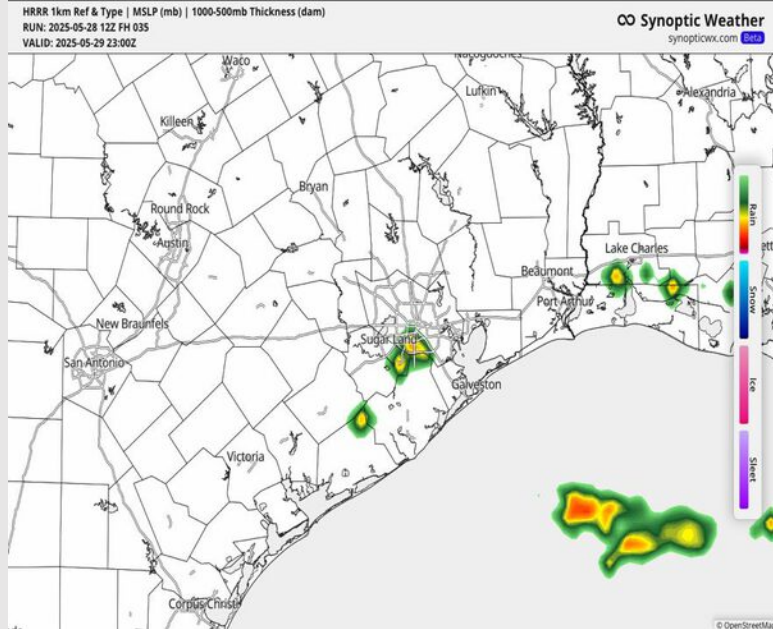
Precip: Isolated showers will be possible from 6AM to 9 AM. After 9AM, dry conditions will be in play for the majority of the PM, with isolated storms in play between 4 – 9 PM. **Lightning and wind gusts of 30 – 40 kts will be possible within any storm.**

Wind: Winds will be generally out of the E/SE throughout the day, becoming variable at times. **N of Morgan's Point:** Winds will be at 3 – 6 kts for all of Thursday. **S of Morgan's Point:** Winds will be at 5 – 10 kts for all of Thursday.

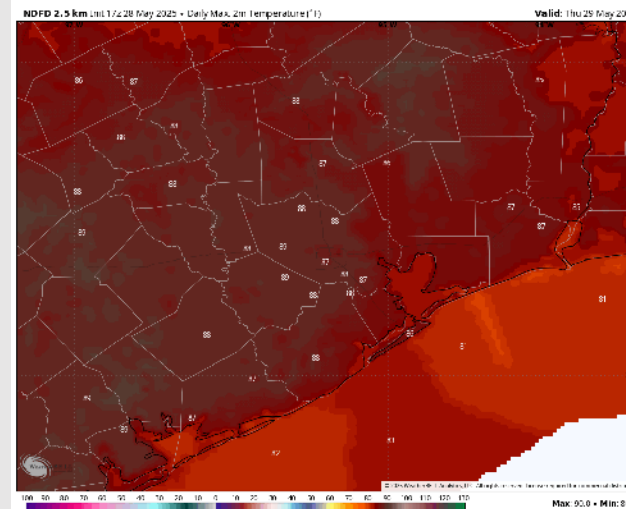
High Temps: **N of Morgan's Point:** Upper 80s F. **S of Morgan's Point:** Low to mid 80s F.

Visibility: No visibility concerns for Thursday.

Precip Image: 6 PM CT



Wind Speed:
8 AM CT



High Temps
Thursday

Houston Pilots: FRI. 5/30/2025

Forecast Discussion

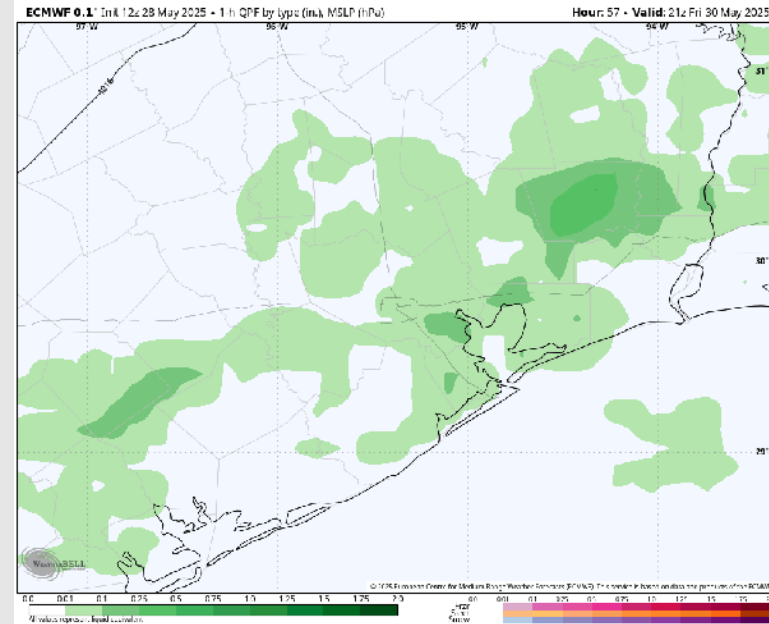
Precip: Hit/miss (40-50%) showers and storms will be possible for all Stations from 10 AM to 7 PM. **Lightning and wind gusts of 30-40 kts will be possible within storms.**

Wind: Winds will be out of the S/SE, gradually rotating to be out of the NE after 11AM. **N of Morgan's Point:** Winds will be at 2 – 7 kts throughout Friday. **S of Morgan's Point:** Winds will be at 3 – 8 kts throughout the day.

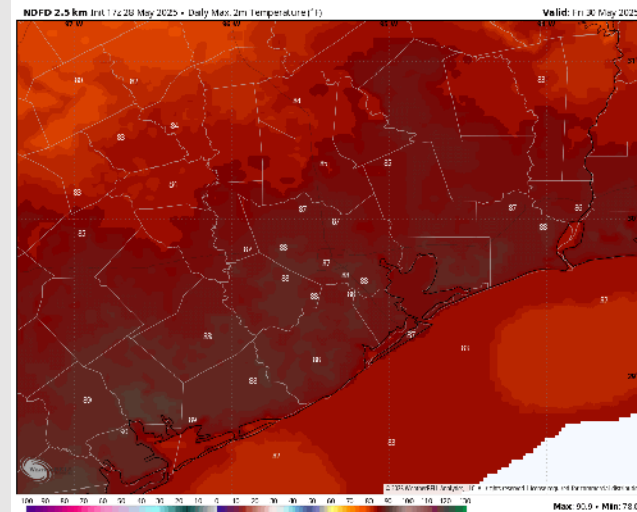
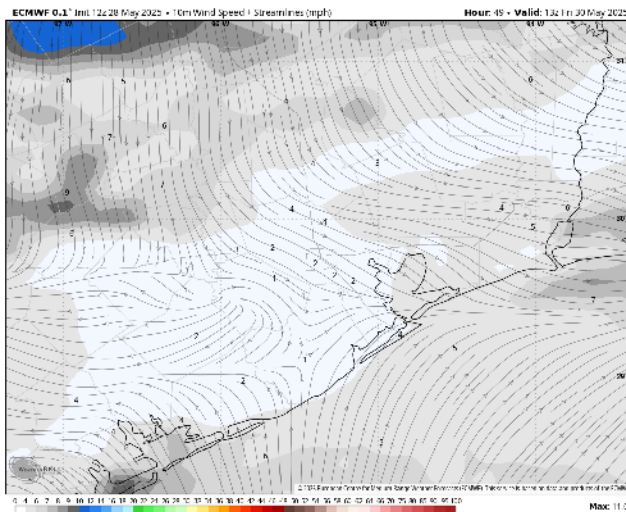
High Temps: **N of Morgan's Point:** High 80s F. **S of Morgan's Point:** Mid 80s F.

Visibility: Lowered visibilities will be possible under any heavy downpours. We also need to watch for misty conditions/non-sea fog N. of Morgan's Point from 4AM to 10AM which can also reduce visibilities.

Precip Image: 4 PM CT



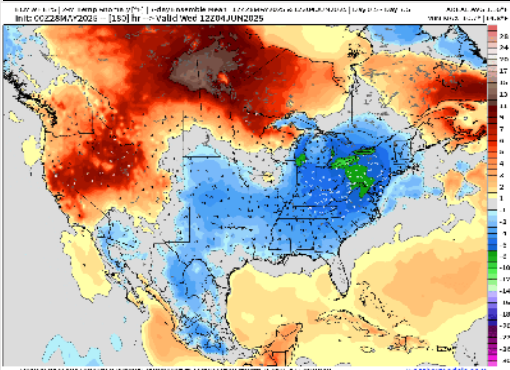
Wind Speed
8 AM CT



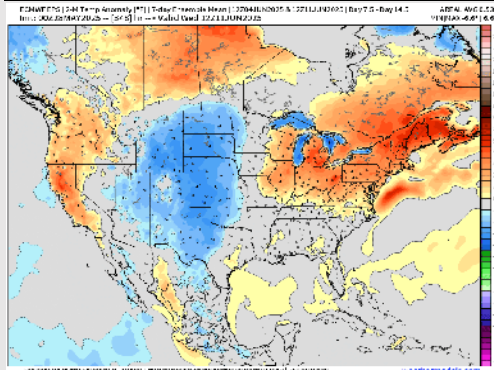
High Temps
Friday

Houston Pilots: 5/28/25

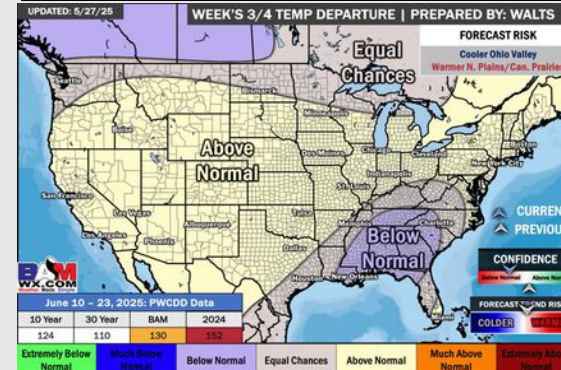
Next 7 Day Temperature Departure



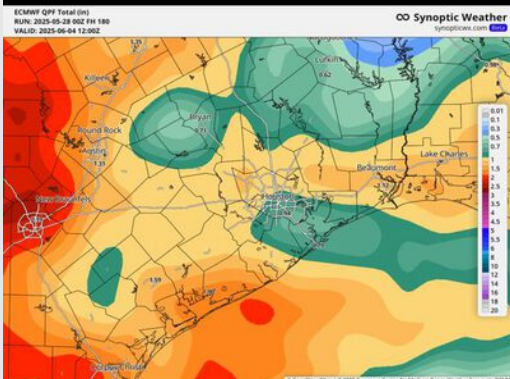
8-14 Day Temperature Departure



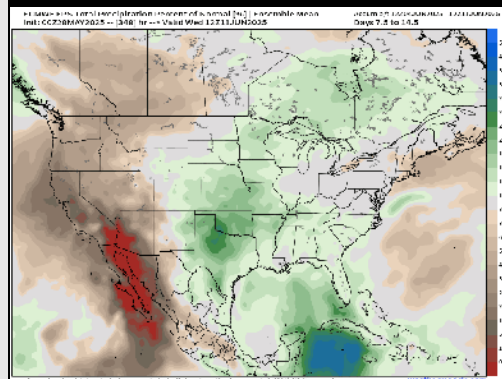
15-30 Day Temperature Departure



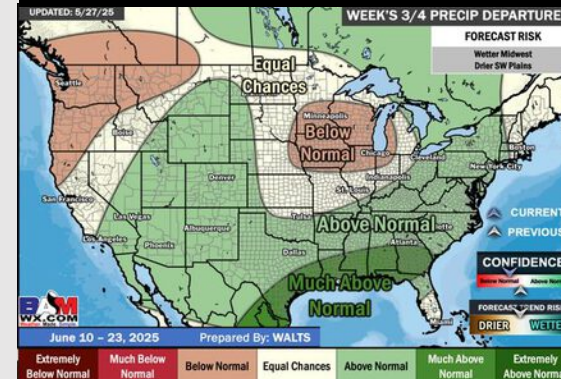
Next 7 Day Total Precipitation



8-14 Day % of Average Precip.



15-30 Day % of Average Precip.



- Temps are expected to be near normal the next 7 days. Scattered rain chances throughout the week.
- Near normal temps and above normal rainfall is favored for days 8 – 14.
- Slightly below normal temperatures and much above normal precipitation chances are favored for mid to late June