

Houston Pilots Forecast Package



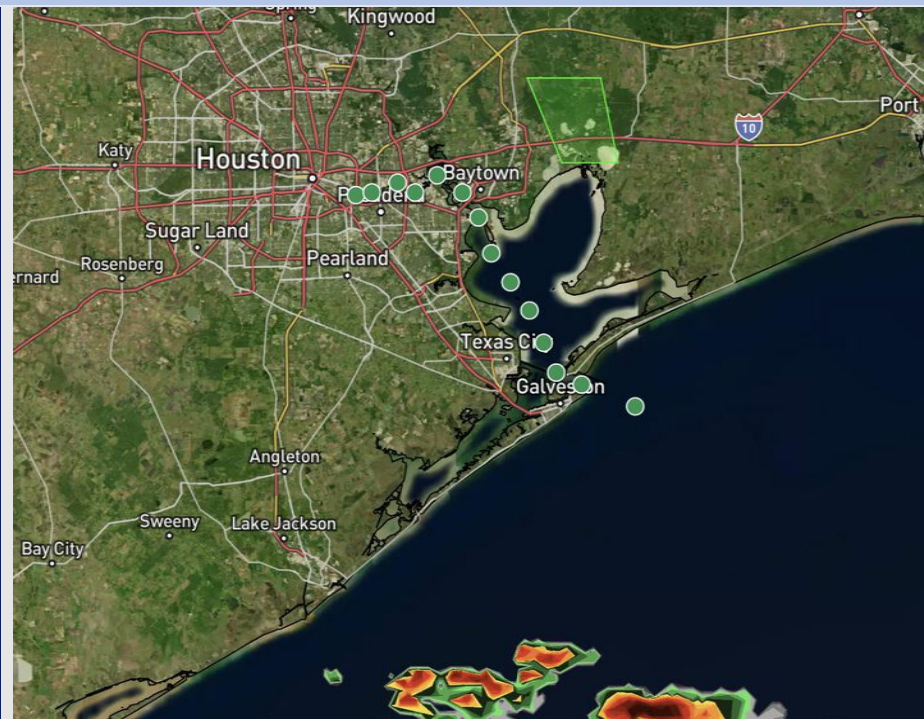
Updated: 3:00 PM CT

Friday, May 23, 2025

Forecaster: Alyssa Elliott

Weather Headlines

- Favoring dry conditions this PM with storms staying S of Stations.
- Isolated showers possible from 12PM – 6PM Saturday.
- **Wind gusts of 20 – 25 kts will be possible for ALL stations Saturday.**



Current Radar: 2:50 PM CT

As always, please do not hesitate to reach out to us with any forecast questions at **(317)-560-8122**. Press **1** for forecast questions.

You can also access real-time forecast updates and 24/7 meteorological chat assistance on your **Clarity** app. Click [here](#) for login assistance.



Houston Pilots Visibility Chart (miles)



Visibility	Fri 4 pm	Fri 5 pm	Fri 6 pm	Fri 7 pm	Fri 8 pm	Fri 9 pm	Fri 10 pm	Fri 11 pm	Sat 12 am	Sat 1 am	Sat 2 am	Sat 3 am	Sat 4 am	Sat 5 am	Sat 6 am	Sat 7 am	Sat 8 am	Sat 9 am	Sat 10 am	Sat 11 am	Sat 12 pm	Sat 1 pm	Sat 2 pm	Sat 3 pm
Houston Pilots N - 610 Bridge	10	10	10	10	10	10	10	10	10	10	10	10	10	10	10	10	7.9	7.9	10	10	10	10	10	10
Houston Pilots M - Kinder 1	10	10	10	10	10	10	10	10	10	10	10	10	10	10	10	10	7.9	7.9	10	10	10	10	10	10
Houston Pilots L - Greens Bayou	10	10	10	10	10	10	10	10	10	10	10	10	10	10	10	10	6.9	7.9	10	10	10	10	10	10
Houston Pilots K - Shell Crude	10	10	10	10	10	10	10	10	10	10	10	10	10	10	10	10	6.9	7.9	10	10	10	10	10	10
Houston Pilots J - Lynchburg Ferries	10	10	10	10	10	10	10	10	10	10	10	10	10	10	10	10	6.9	7.9	10	10	10	10	10	10
Houston Pilots I - Exxon 3	10	10	10	10	10	10	10	10	10	10	10	10	10	10	10	10	6.9	7.9	10	10	10	10	10	10
Houston Pilots H - Morgans Point	10	10	10	10	10	10	10	10	10	10	10	10	10	10	10	10	6.9	7.9	10	10	10	10	10	10
Houston Pilots G - 75/76	10	10	10	10	10	10	10	10	10	10	10	10	10	10	10	9	6.9	5.9	6.9	10	10	10	10	10
Houston Pilots F - 63/64	10	10	10	10	10	10	10	10	10	10	10	10	10	10	10	9	6.9	5.9	6.9	10	10	10	10	10
Houston Pilots E - 51/52	10	10	10	10	10	10	10	10	10	10	10	10	10	10	10	7.9	6.9	5.9	6.9	9	10	10	10	9
Houston Pilots D - 37/38	10	10	10	10	10	10	10	10	10	10	10	10	10	10	10	7.9	6.9	5.9	6.9	9	10	10	10	9
Houston Pilots C - 25/26	10	10	10	10	10	10	10	10	10	10	10	10	10	10	10	10	6.9	5.9	6.9	9	10	10	10	9
Houston Pilots B - 11/12	10	10	10	10	10	10	10	10	10	10	10	10	10	10	10	10	6.9	5.9	6.9	9	10	10	10	9
Houston Pilots A - 1 & 2 Bravo	10	10	10	10	10	10	10	10	10	10	9	10	10	10	9	7.9	5.9	4.9	6.9	7.9	9	10	10	9

NOTE: This is automated data that may/may not agree with the official BAM thinking that's found on the daily slides or special visibility report slides. This data should be used as a guide only

Houston Pilots Wind Chart



Sustained Wind 10 Knots
Gusts 15 Knots
Wind from the SE



Wind	Fri 4 pm	Fri 5 pm	Fri 6 pm	Fri 7 pm	Fri 8 pm	Fri 9 pm	Fri 10 pm	Fri 11 pm	Sat 12 am	Sat 1 am	Sat 2 am	Sat 3 am	Sat 4 am	Sat 5 am	Sat 6 am	Sat 7 am	Sat 8 am	Sat 9 am	Sat 10 am	Sat 11 am	Sat 12 pm	Sat 1 pm	Sat 2 pm	Sat 3 pm
Houston Pilots N - 610 Bridge	10 20 ↖	10 21 ↖	10 22 ↖	12 21 ↖	10 21 ↖	10 21 ↖	10 20 ↖	9 18 ↖	8 17 ↖	8 17 ↖	8 16 ↖	8 16 ↖	8 16 ↖	8 17 ↖	8 16 ↖	8 16 ↖	8 16 ↖	8 17 ↖	8 20 ↖	10 21 ↖	10 22 ↖	12 24 ↖	12 24 ↖	13 24 ↖
Houston Pilots M - Kinder 1	10 20 ↖	10 21 ↖	12 22 ↖	12 21 ↖	10 21 ↖	10 20 ↖	9 20 ↖	9 18 ↖	8 17 ↖	8 17 ↖	8 16 ↖	8 16 ↖	8 16 ↖	8 17 ↖	8 16 ↖	8 16 ↖	7 16 ↖	8 17 ↖	8 17 ↖	10 20 ↖	10 21 ↖	12 22 ↖	12 24 ↖	13 24 ↖
Houston Pilots L - Greens Bayou	10 20 ↖	10 21 ↖	12 21 ↖	10 21 ↖	10 21 ↖	10 20 ↖	9 18 ↖	8 18 ↖	8 17 ↖	8 16 ↖	8 16 ↖	8 16 ↖	8 16 ↖	8 16 ↖	8 16 ↖	7 16 ↖	7 16 ↖	8 17 ↖	8 17 ↖	10 18 ↖	10 21 ↖	12 22 ↖	13 23 ↖	13 24 ↖
Houston Pilots K - Shell Crude	10 20 ↖	10 21 ↖	12 21 ↖	12 21 ↖	10 20 ↖	10 20 ↖	9 18 ↖	8 17 ↖	8 17 ↖	8 17 ↖	8 16 ↖	8 16 ↖	8 16 ↖	8 17 ↖	8 16 ↖	8 16 ↖	8 16 ↖	8 17 ↖	8 17 ↖	10 18 ↖	10 21 ↖	12 22 ↖	13 23 ↖	13 24 ↖
Houston Pilots J - Lynchburg Ferries	10 20 ↖	10 21 ↖	12 21 ↖	10 21 ↖	10 20 ↖	10 20 ↖	9 18 ↖	8 17 ↖	8 17 ↖	8 16 ↖	8 16 ↖	7 16 ↖	8 16 ↖	8 16 ↖	8 16 ↖	7 16 ↖	7 16 ↖	8 17 ↖	8 17 ↖	10 18 ↖	10 21 ↖	12 22 ↖	13 23 ↖	13 24 ↖
Houston Pilots I - Exxon 3	13 21 ↖	13 22 ↖	14 22 ↖	14 21 ↖	14 21 ↖	14 21 ↖	13 20 ↖	13 20 ↖	13 20 ↖	13 17 ↖	12 18 ↖	13 17 ↖	13 17 ↖	13 17 ↖	12 17 ↖	12 17 ↖	12 17 ↖	12 17 ↖	13 18 ↖	13 20 ↖	13 21 ↖	14 22 ↖	14 23 ↖	15 24 ↖
Houston Pilots H - Morgans Point	13 21 ↖	13 22 ↖	14 22 ↖	14 21 ↖	14 21 ↖	13 20 ↖	13 20 ↖	13 20 ↖	13 17 ↖	13 18 ↖	13 17 ↖	13 17 ↖	13 18 ↖	13 17 ↖	13 17 ↖	12 17 ↖	12 17 ↖	12 17 ↖	13 18 ↖	13 20 ↖	13 21 ↖	14 22 ↖	14 23 ↖	15 24 ↖
Houston Pilots G - 75/76	13 22 ↖	14 23 ↖	15 23 ↖	15 22 ↖	15 22 ↖	15 21 ↖	14 21 ↖	14 20 ↖	14 20 ↖	14 20 ↖	14 20 ↖	14 20 ↖	14 21 ↖	14 21 ↖	14 20 ↖	14 20 ↖	14 20 ↖	14 20 ↖	14 21 ↖	14 21 ↖	14 22 ↖	15 23 ↖	15 24 ↖	15 24 ↖
Houston Pilots F - 63/64	13 21 ↖	14 22 ↖	14 22 ↖	14 22 ↖	14 21 ↖	14 21 ↖	14 21 ↖	14 20 ↖	14 20 ↖	14 20 ↖	14 20 ↖	14 20 ↖	14 21 ↖	15 21 ↖	15 21 ↖	15 21 ↖	14 20 ↖	14 21 ↖	14 21 ↖	14 21 ↖	14 22 ↖	15 23 ↖	15 24 ↖	15 24 ↖
Houston Pilots E - 51/52	13 21 ↖	13 22 ↖	14 21 ↖	14 21 ↖	14 20 ↖	14 20 ↖	14 20 ↖	14 20 ↖	14 20 ↖	15 20 ↖	15 21 ↖	15 21 ↖	15 21 ↖	15 21 ↖	15 21 ↖	15 21 ↖	15 21 ↖	15 21 ↖	15 21 ↖	15 22 ↖	15 23 ↖	15 24 ↖	15 24 ↖	15 24 ↖
Houston Pilots D - 37/38	13 20 ↖	13 21 ↖	13 21 ↖	13 20 ↖	13 20 ↖	13 20 ↖	13 20 ↖	13 20 ↖	14 20 ↖	14 20 ↖	15 20 ↖	15 21 ↖	15 21 ↖	15 21 ↖	15 21 ↖	15 21 ↖	15 21 ↖	15 21 ↖	15 21 ↖	15 22 ↖	15 23 ↖	15 24 ↖	15 24 ↖	15 24 ↖
Houston Pilots C - 25/26	13 20 ↖	13 20 ↖	13 20 ↖	13 20 ↖	13 18 ↖	13 18 ↖	13 18 ↖	13 20 ↖	13 20 ↖	14 20 ↖	14 20 ↖	14 21 ↖	15 21 ↖	15 21 ↖	15 21 ↖	15 21 ↖	15 21 ↖	15 21 ↖	15 21 ↖	15 21 ↖	15 22 ↖	15 23 ↖	15 24 ↖	15 24 ↖
Houston Pilots B - 11/12	12 17 ↖	12 18 ↖	12 17 ↖	12 18 ↖	12 17 ↖	12 17 ↖	12 18 ↖	12 18 ↖	13 20 ↖	13 18 ↖	13 20 ↖	13 20 ↖	13 20 ↖	13 21 ↖	13 21 ↖	13 21 ↖	13 21 ↖	13 20 ↖	13 20 ↖	13 21 ↖	14 21 ↖	14 22 ↖	14 22 ↖	14 22 ↖
Houston Pilots A - 1 & 2 Bravo	10 17 ↖	12 17 ↖	12 17 ↖	13 18 ↖	13 17 ↖	13 18 ↖	13 20 ↖	13 20 ↖	14 20 ↖	15 21 ↖	15 21 ↖	15 22 ↖	15 22 ↖	15 22 ↖	15 22 ↖	15 22 ↖	15 22 ↖	15 22 ↖	15 21 ↖	15 21 ↖	14 21 ↖	14 22 ↖	14 21 ↖	14 21 ↖

NOTE: This is automated data that may/may not agree with the official BAM thinking that's found on the daily slides.
This data should be used as a guide only.

Houston Pilots: FRI. 5/23/2025

Forecast Discussion

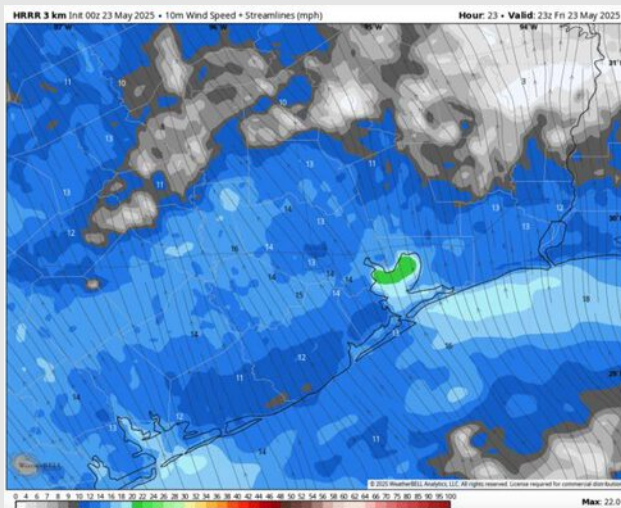
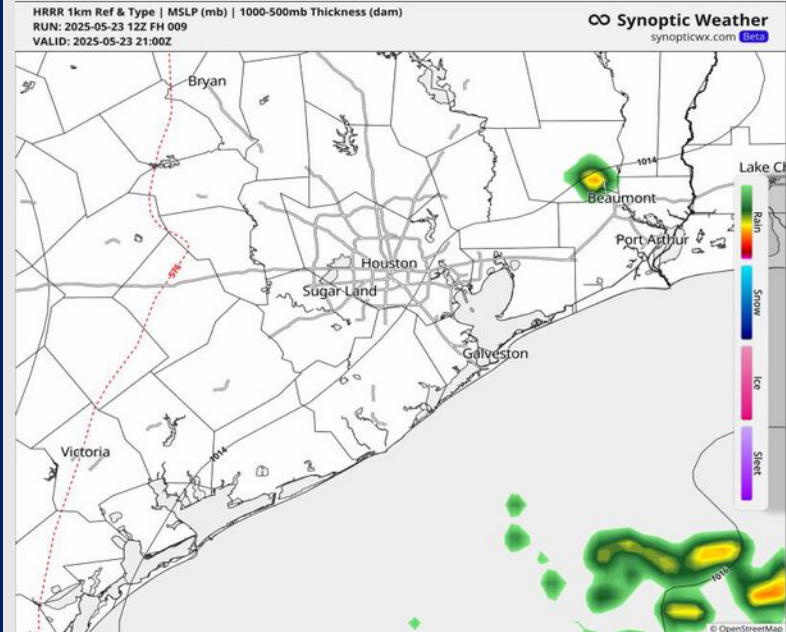
Precip: Favoring dry conditions the rest of the day with heavier storms staying to the south and west of ALL stations.

Wind: Winds will from the SE for the rest of the day. **N of Morgan's Point:** Winds will be at 8 - 13 kts. **S of Morgan's Point:** Winds will be at 13 - 18 kts.

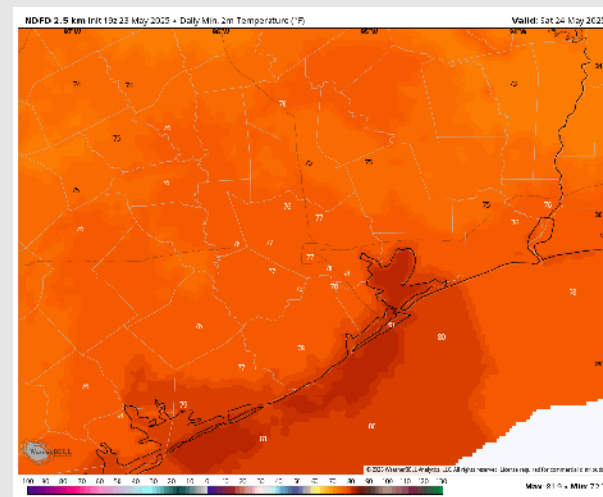
Low Temps: **N of Morgan's Point:** Upper 70s F. **S of Morgan's Point:** Low 80s F.

Visibility: No visibility concerns for today.

Precip Image: 4 PM CT



Wind Speed:
6 PM CT



Low Temps
SAT AM

Houston Pilots: SAT. 5/24/2025

Forecast Discussion

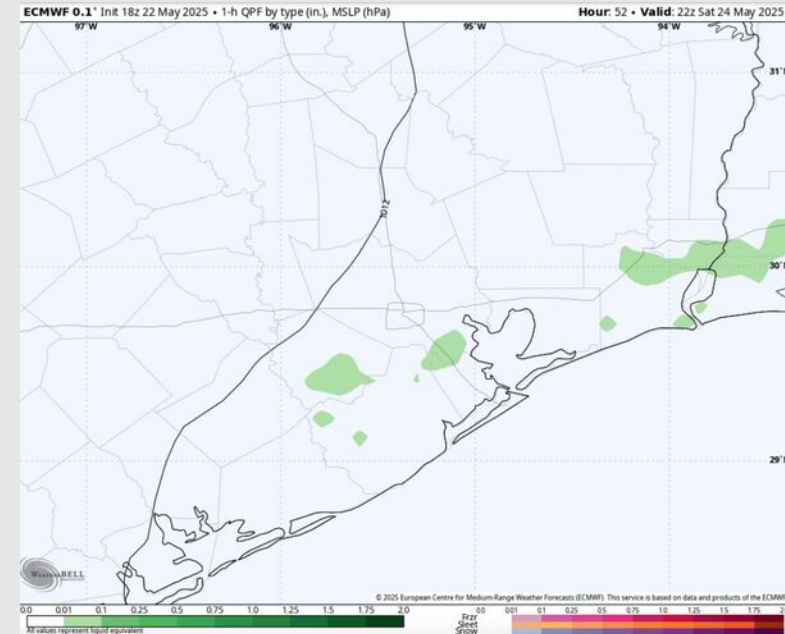
Precip: Isolated showers possible from 12PM – 6PM Saturday.

Wind: Winds will be out of the S Saturday. **N of Morgan's Point:** Winds will be at 6 – 11 kts. **S of Morgan's Point:** Winds will be at 10 – 15 kts. **Wind gusts of 20 – 25 kts will be possible for ALL stations Saturday.**

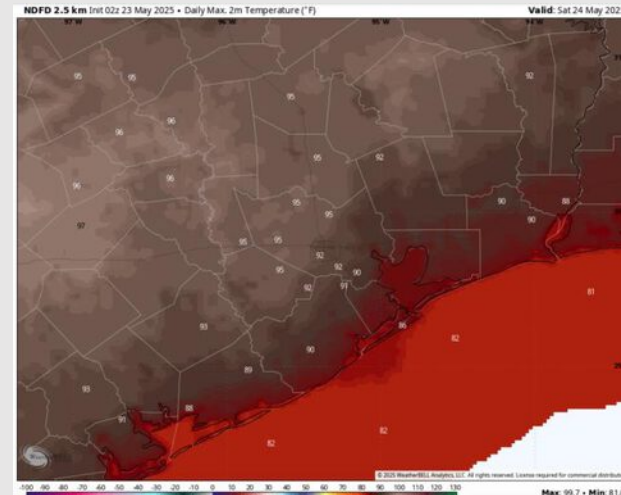
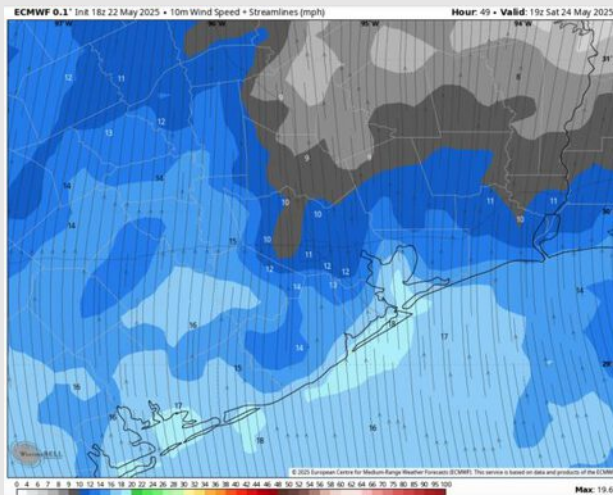
High Temps: **N of Morgan's Point:** Low 90s F. **S of Morgan's Point:** Mid 80s F.

Visibility: No fog concerns Saturday.

Precip Image: 5 PM CT



Wind Speed
2 PM CT



High Temps
Saturday

Houston Pilots: SUN. 5/25/2025

Forecast Discussion

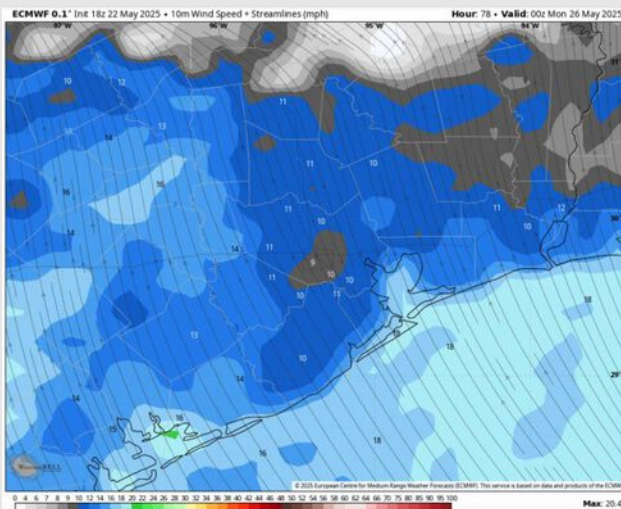
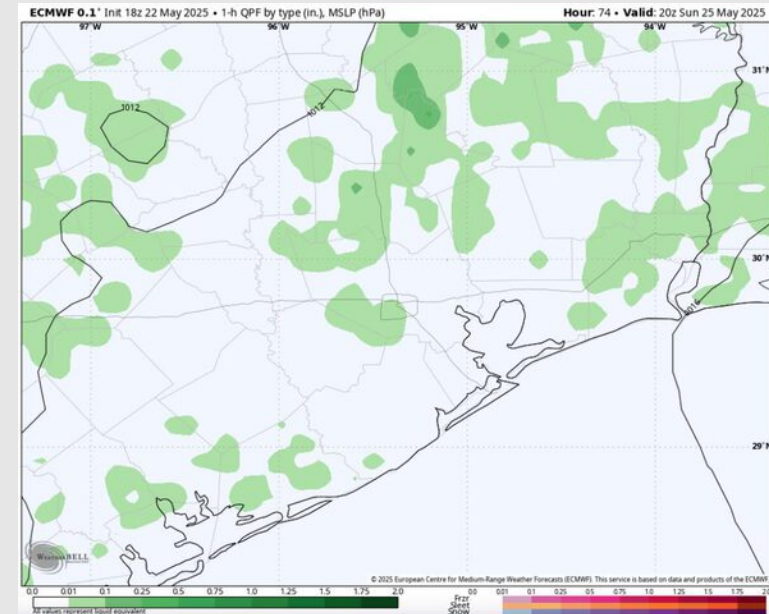
Precip: Isolated showers possible from 12PM – 8PM Sunday.

Wind: Winds will be out of the SE Sunday. **N of Morgan's Point:** Winds will be at 5 – 10 kts. **S of Morgan's Point:** Winds will be at 10 - 15 kts.

High Temps: **N of Morgan's Point:** Low 90s F. **S of Morgan's Point:** Mid 80s F.

Visibility: No fog concerns Sunday.

Precip Image: 3 PM CT



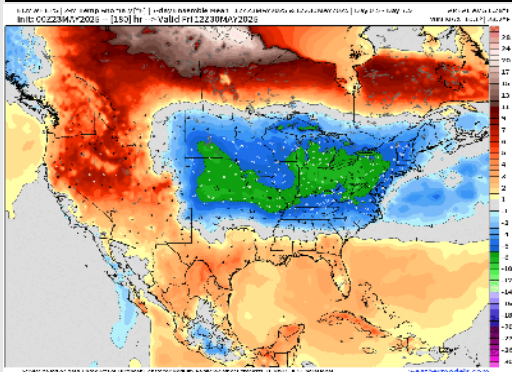
Wind Speed:
7 PM CT



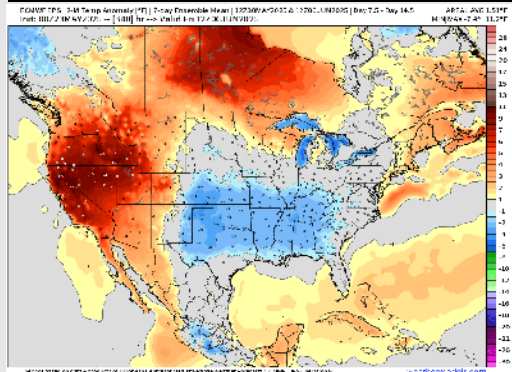
High Temps
Sunday

Houston Pilots: 5/23/25

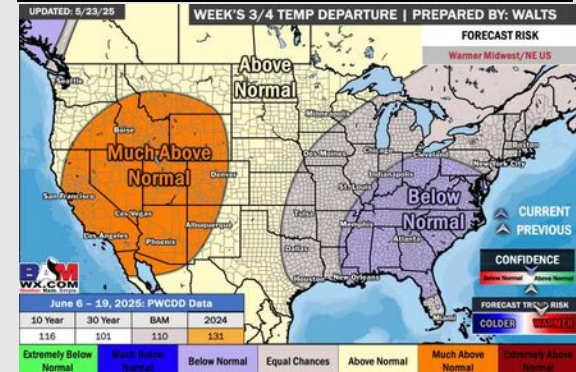
Next 7 Day Temperature Departure



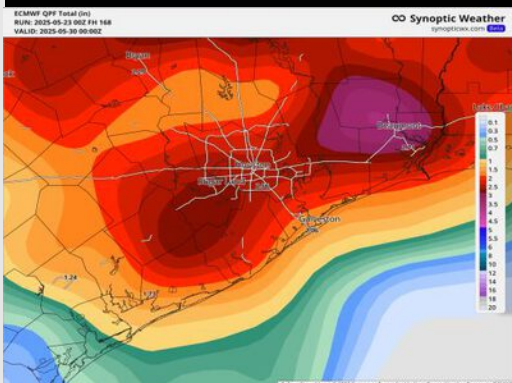
8-14 Day Temperature Departure



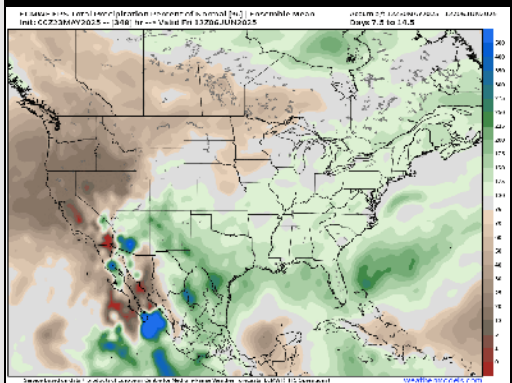
15-30 Day Temperature Departure



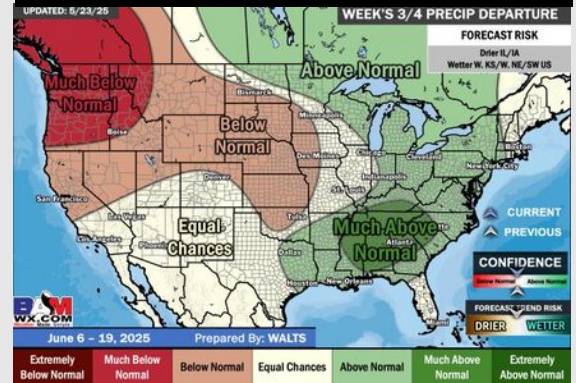
Next 7 Day Total Precipitation



8-14 Day % of Average Precip.



15-30 Day % of Average Precip.



- Temps are expected to be above normal the next 7 days. Scattered rain chances will start the week with the heaviest rains coming mid week.
- Near normal temps and above normal rainfall is favored for days 8 – 14.
- Near normal temperatures and near / slightly above normal precipitation chances are favored for early to mid June.