

# Houston Pilots Forecast Package



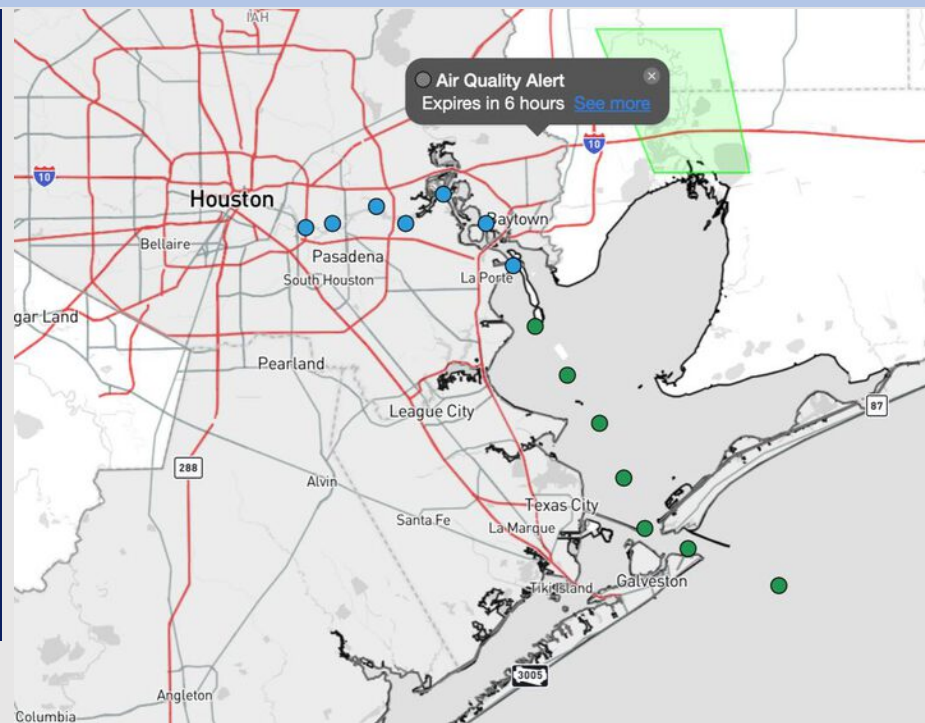
Updated: 12:45 PM CT

Thursday, May 22, 2025

Forecaster: Hope Kleitsch

## Weather Headlines

- Isolated showers will be possible FRI and SAT, however, favoring more dry time than not.
- **Wind gusts of 20 – 25 kts will be possible for ALL stations Saturday.**



**Current Radar: 12:45 PM CT**

As always, please do not hesitate to reach out to us with any forecast questions at **(317)-560-8122**. **Press 1 for forecast questions.**

You can also access real-time forecast updates and 24/7 meteorological chat assistance on your **Clarity** app. Click [here](#) for login assistance.



# Houston Pilots Visibility Chart (miles)



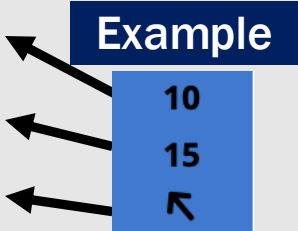
Visibility	Thu 2 pm	Thu 3 pm	Thu 4 pm	Thu 5 pm	Thu 6 pm	Thu 7 pm	Thu 8 pm	Thu 9 pm	Thu 10 pm	Thu 11 pm	Fri 12 am	Fri 1 am	Fri 2 am	Fri 3 am	Fri 4 am	Fri 5 am	Fri 6 am	Fri 7 am	Fri 8 am	Fri 9 am	Fri 10 am	Fri 11 am	Fri 12 pm	Fri 1 pm
Houston Pilots N - 610 Bridge	10	10	10	10	10	10	10	10	10	10	10	10	10	10	7.9	7.9	6.9	5.9	3.9	4.9	9	10	10	10
Houston Pilots M - Kinder 1	10	10	10	10	10	10	10	10	10	10	10	10	10	10	7.9	7.9	6.9	5.9	3.9	4.9	9	10	10	10
Houston Pilots L - Greens Bayou	10	10	10	10	10	10	10	10	10	10	10	10	10	10	7.9	7.9	6.9	5.9	3.9	4.9	9	10	10	10
Houston Pilots K - Shell Crude	10	10	10	10	10	10	10	10	10	10	10	10	10	10	7.9	7.9	6.9	5.9	3.9	4.9	9	10	10	10
Houston Pilots J - Lynchburg Ferries	10	10	10	10	10	10	10	10	10	10	10	10	10	10	7.9	7.9	6.9	5.9	3.9	4.9	9	10	10	10
Houston Pilots I - Exxon 3	10	10	10	10	10	10	10	10	10	10	10	10	10	10	9	7.9	6.9	5.9	3.9	4.9	9	10	10	10
Houston Pilots H - Morgans Point	10	10	10	10	10	10	10	10	10	10	10	10	10	10	9	9	6.9	5.9	4.9	4.9	9	10	10	10
Houston Pilots G - 75/76	10	10	10	10	10	10	10	10	10	10	10	10	10	10	10	9	6.9	6.9	4.9	4.9	6.9	10	10	10
Houston Pilots F - 63/64	10	10	10	10	10	10	10	10	10	10	10	10	10	10	10	9	7.9	6.9	4.9	4.9	6.9	10	10	10
Houston Pilots E - 51/52	10	10	10	10	10	10	10	10	10	10	10	10	10	10	10	9	7.9	6.9	5.9	5.9	6.9	9	9	10
Houston Pilots D - 37/38	10	10	10	10	10	10	10	10	10	10	10	10	10	10	10	9	7.9	6.9	5.9	5.9	6.9	9	9	10
Houston Pilots C - 25/26	10	10	10	10	10	10	10	10	10	10	10	10	10	10	10	10	7.9	6.9	5.9	5.9	6.9	9	9	10
Houston Pilots B - 11/12	10	10	10	10	10	10	10	10	10	10	10	10	10	10	10	9	9	7.9	5.9	5.9	6.9	9	9	10
Houston Pilots A - 1 & 2 Bravo	10	10	10	9	10	10	10	10	10	10	10	10	9	7.9	9	7.9	6.9	6.9	5.9	4.9	5.9	6.9	6.9	10

NOTE: This is automated data that may/may not agree with the official BAM thinking that's found on the daily slides or special visibility report slides. This data should be used as a guide only

# Houston Pilots Wind Chart



Sustained Wind 10 Knots  
Gusts 15 Knots  
Wind from the SE



Wind	Thu 2 pm	Thu 3 pm	Thu 4 pm	Thu 5 pm	Thu 6 pm	Thu 7 pm	Thu 8 pm	Thu 9 pm	Thu 10 pm	Thu 11 pm	Fri 12 am	Fri 1 am	Fri 2 am	Fri 3 am	Fri 4 am	Fri 5 am	Fri 6 am	Fri 7 am	Fri 8 am	Fri 9 am	Fri 10 am	Fri 11 am	Fri 12 pm	Fri 1 pm
Houston Pilots N - 610 Bridge	7 14 ↖	8 15 ↖	8 15 ↖	8 17 ↖	9 17 ↖	10 17 ↖	10 18 ↖	8 16 ↖	8 15 ↖	7 14 ↖	6 13 ↖	5 10 ↖	5 9 ↖	3 8 ↖	3 7 ↖	3 7 ↖	3 7 ↖	3 7 ↖	3 7 ↖	3 8 ↖	5 9 ↖	6 12 ↖	7 14 ↖	8 15 ↖
Houston Pilots M - Kinder 1	7 14 ↖	8 15 ↖	8 15 ↖	8 17 ↖	9 17 ↖	9 17 ↖	9 17 ↖	8 16 ↖	8 15 ↖	7 14 ↖	6 12 ↖	5 9 ↖	5 9 ↖	3 8 ↖	3 7 ↖	3 7 ↖	3 7 ↖	3 7 ↖	3 7 ↖	3 8 ↖	5 12 ↖	6 12 ↖	7 14 ↖	8 15 ↖
Houston Pilots L - Greens Bayou	7 14 ↖	8 15 ↖	8 15 ↖	8 17 ↖	9 17 ↖	9 17 ↖	9 17 ↖	8 16 ↖	7 14 ↖	6 13 ↖	6 12 ↖	5 9 ↖	5 9 ↖	3 8 ↖	3 7 ↖	3 7 ↖	3 6 ↖	3 6 ↖	3 7 ↖	3 8 ↖	5 9 ↖	6 12 ↖	7 14 ↖	8 15 ↖
Houston Pilots K - Shell Crude	7 14 ↖	8 15 ↖	8 15 ↖	9 17 ↖	9 17 ↖	9 17 ↖	9 17 ↖	8 15 ↖	7 14 ↖	6 13 ↖	6 12 ↖	5 9 ↖	5 9 ↖	3 8 ↖	3 7 ↖	3 7 ↖	3 6 ↖	3 6 ↖	3 7 ↖	3 8 ↖	5 9 ↖	6 12 ↖	7 14 ↖	8 15 ↖
Houston Pilots J - Lynchburg Ferries	7 13 ↖	8 15 ↖	8 15 ↖	8 17 ↖	9 17 ↖	9 17 ↖	9 17 ↖	8 15 ↖	7 14 ↖	6 13 ↖	6 12 ↖	5 9 ↖	5 8 ↖	3 7 ↖	3 7 ↖	3 6 ↖	3 6 ↖	3 6 ↖	3 6 ↖	3 7 ↖	5 9 ↖	6 12 ↖	7 14 ↖	8 15 ↖
Houston Pilots I - Exxon 3	8 14 ↖	9 15 ↖	10 16 ↖	10 17 ↖	12 17 ↖	13 18 ↖	13 18 ↖	12 17 ↖	10 15 ↖	9 14 ↖	8 13 ↖	8 12 ↖	7 12 ↖	6 9 ↖	6 8 ↖	6 8 ↖	5 8 ↖	5 8 ↖	6 8 ↖	6 9 ↖	7 10 ↖	8 13 ↖	8 15 ↖	9 16 ↖
Houston Pilots H - Morgans Point	8 15 ↖	9 15 ↖	10 17 ↖	10 17 ↖	12 18 ↖	13 18 ↖	13 18 ↖	12 16 ↖	10 15 ↖	9 14 ↖	8 13 ↖	8 12 ↖	7 12 ↖	6 9 ↖	6 8 ↖	6 8 ↖	6 8 ↖	6 8 ↖	6 9 ↖	6 10 ↖	7 13 ↖	8 15 ↖	8 16 ↖	10 17 ↖
Houston Pilots G - 75/76	9 15 ↖	10 16 ↖	10 18 ↖	12 18 ↖	13 20 ↖	13 20 ↖	13 18 ↖	13 17 ↖	10 16 ↖	10 15 ↖	9 14 ↖	8 13 ↖	8 13 ↖	8 12 ↖	7 10 ↖	7 10 ↖	7 10 ↖	6 10 ↖	7 10 ↖	7 12 ↖	8 13 ↖	8 14 ↖	9 16 ↖	10 17 ↖
Houston Pilots F - 63/64	9 15 ↖	10 16 ↖	10 17 ↖	12 18 ↖	13 18 ↖	13 18 ↖	13 18 ↖	12 17 ↖	10 16 ↖	10 15 ↖	9 14 ↖	9 13 ↖	8 13 ↖	8 12 ↖	8 10 ↖	7 10 ↖	7 10 ↖	7 10 ↖	7 10 ↖	8 12 ↖	8 13 ↖	9 14 ↖	10 16 ↖	10 17 ↖
Houston Pilots E - 51/52	10 16 ↖	10 16 ↖	10 17 ↖	12 18 ↖	12 18 ↖	12 17 ↖	13 17 ↖	12 16 ↖	10 15 ↖	10 15 ↖	9 14 ↖	9 13 ↖	9 13 ↖	8 12 ↖	8 12 ↖	8 10 ↖	8 10 ↖	7 10 ↖	7 10 ↖	8 12 ↖	8 13 ↖	9 14 ↖	10 16 ↖	10 17 ↖
Houston Pilots D - 37/38	10 16 ↖	10 16 ↖	10 17 ↖	12 17 ↖	12 17 ↖	12 17 ↖	12 16 ↖	10 16 ↖	10 15 ↖	10 15 ↖	9 13 ↖	8 13 ↖	8 13 ↖	8 12 ↖	8 12 ↖	8 10 ↖	7 10 ↖	7 10 ↖	8 12 ↖	8 12 ↖	8 13 ↖	9 14 ↖	10 16 ↖	10 17 ↖
Houston Pilots C - 25/26	10 15 ↖	10 16 ↖	10 16 ↖	12 17 ↖	12 17 ↖	12 17 ↖	12 16 ↖	10 15 ↖	10 15 ↖	9 14 ↖	8 13 ↖	8 13 ↖	8 13 ↖	8 12 ↖	8 12 ↖	7 10 ↖	7 10 ↖	7 10 ↖	8 12 ↖	8 12 ↖	8 13 ↖	8 14 ↖	10 15 ↖	10 16 ↖
Houston Pilots B - 11/12	9 15 ↖	9 15 ↖	10 15 ↖	10 16 ↖	10 16 ↖	10 16 ↖	10 15 ↖	8 14 ↖	8 14 ↖	8 14 ↖	8 13 ↖	8 13 ↖	8 13 ↖	7 12 ↖	7 10 ↖	7 10 ↖	7 10 ↖	7 10 ↖	7 10 ↖	8 12 ↖	8 12 ↖	8 13 ↖	9 15 ↖	10 16 ↖
Houston Pilots A - 1 & 2 Bravo	9 15 ↖	9 15 ↖	9 15 ↖	10 16 ↖	10 16 ↖	10 16 ↖	10 15 ↖	10 15 ↖	10 15 ↖	9 15 ↖	9 14 ↖	9 14 ↖	9 13 ↖	8 13 ↖	8 13 ↖	8 13 ↖	8 12 ↖	8 12 ↖	8 12 ↖	8 13 ↖	8 13 ↖	8 14 ↖	9 14 ↖	9 15 ↖

NOTE: This is automated data that may/may not agree with the official BAM thinking that's found on the daily slides.  
This data should be used as a guide only.

# Houston Pilots: THU. 5/22/2025

## Forecast Discussion

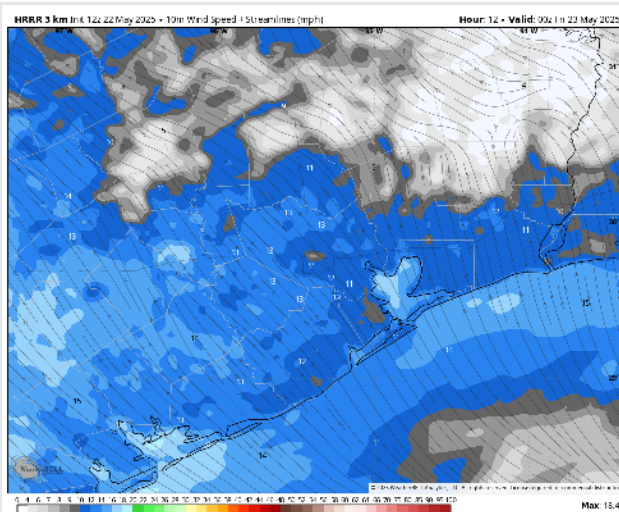
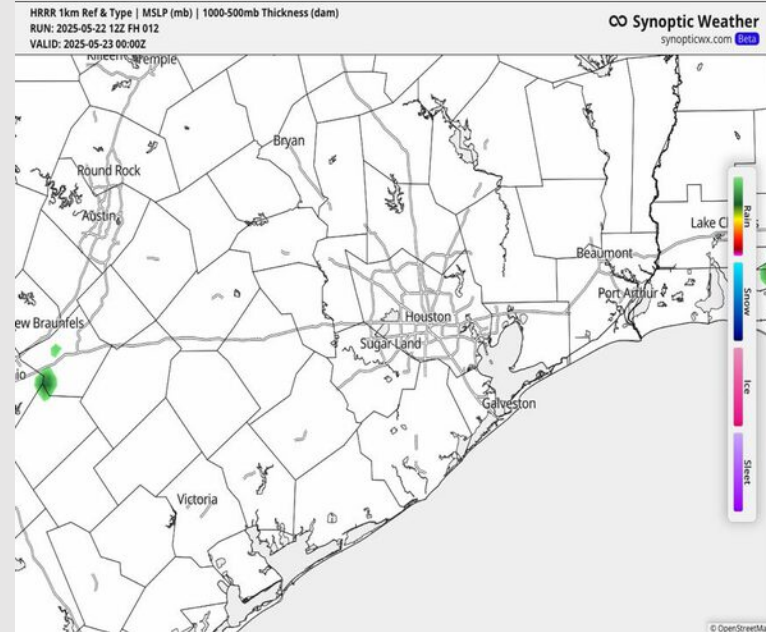
**Precip:** Favoring dry conditions for the rest of the day.

**Wind:** Winds will be out of the SE the rest of today. **N of Morgan's Point:** Winds will be at 5 – 10 kts for the remainder of the day. **S of Morgan's Point:** Winds will be at 8 – 13 kts for the rest of the PM.

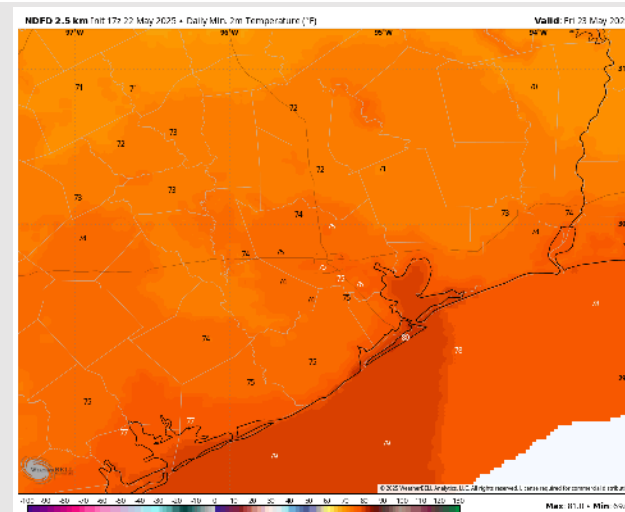
**Low Temps:** **N of Morgan's Point:** Mid 70s F. **S of Morgan's Point:** Near 80s F.

**Visibility:** No fog concerns the remainder of today.

## Precip Image: 7 PM CT



**Wind Speed:**  
7 PM CT



**Low Temps**  
**FRI AM**



# Houston Pilots: FRI. 5/23/2025

## Forecast Discussion

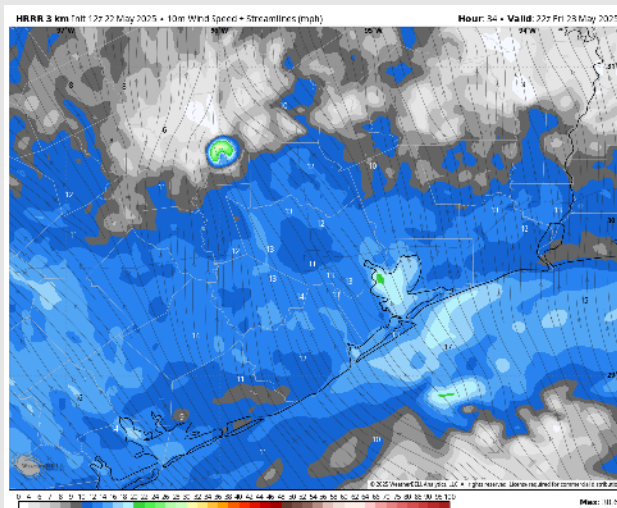
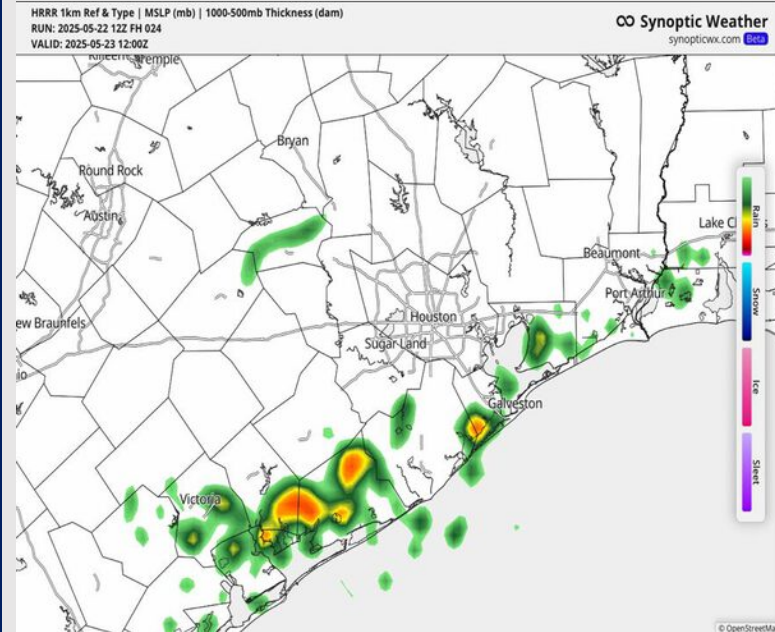
**Precip:** Isolated showers (20%) will be possible from 5AM to 9AM. Dry conditions are then favored through 2PM. After then, a few isolated (10%) showers will be possible through 6PM.

**Wind:** Winds will be variable from 3AM to 10AM as a front passes through. Winds are then expected to settle out of the SE for the rest of the day. **N of Morgan's Point:** Winds will be at 5 - 10 kts. **S of Morgan's Point:** Winds will be at 10 - 15 kts.

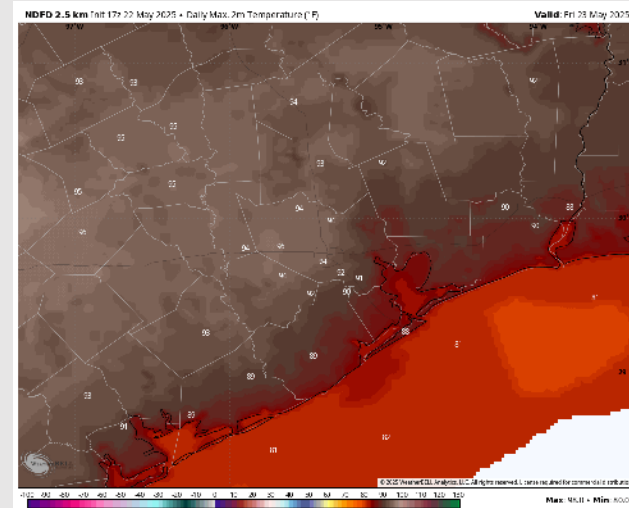
**High Temps:** **N of Morgan's Point:** Low 90s F. **S of Morgan's Point:** Mid 80s F.

**Visibility:** No visibility concerns for Friday.

## Precip Image: 7 AM CT



Wind Speed:  
5 PM CT



High Temps  
Friday

# Houston Pilots: SAT. 5/24/2025

## Forecast Discussion

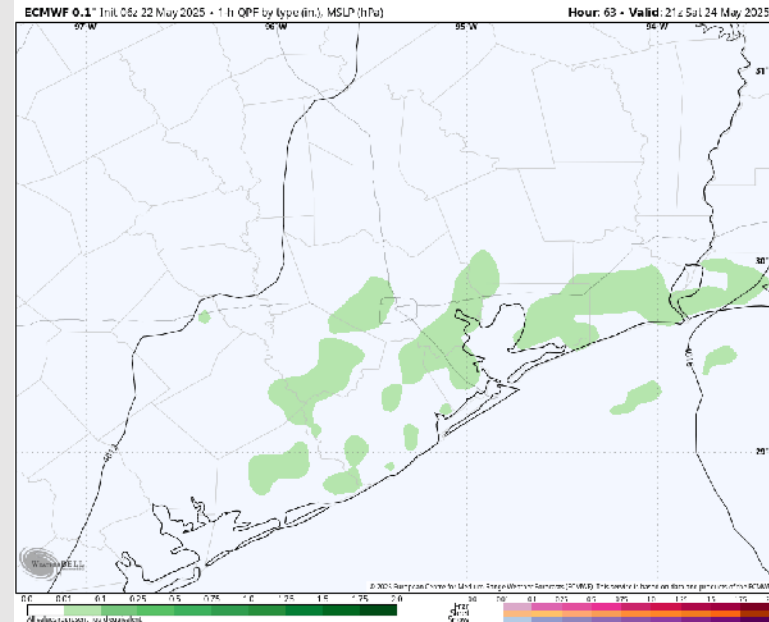
**Precip:** Isolated showers possible from 11AM – 5PM Saturday.

**Wind:** Winds will be out of the SSE Saturday. **N of Morgan's Point:** Winds will be at 8 – 13 kts. **S of Morgan's Point:** Winds will be at 13 – 18 kts. **Wind gusts of 20 – 25 kts will be possible for ALL stations Saturday.**

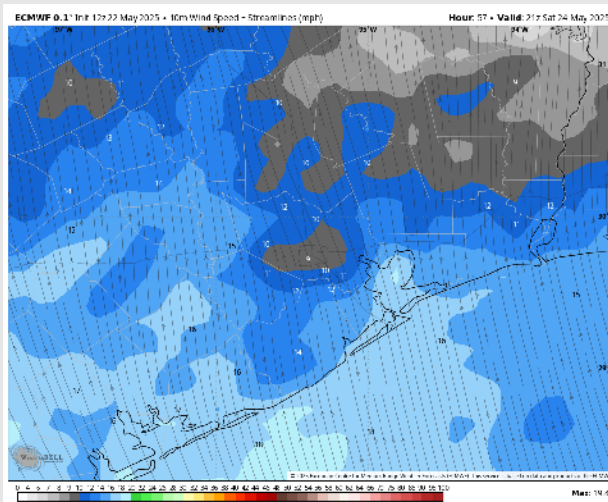
**High Temps:** **N of Morgan's Point:** Low 90s F. **S of Morgan's Point:** Mid 80s F.

**Visibility:** No fog concerns for the rest of today.

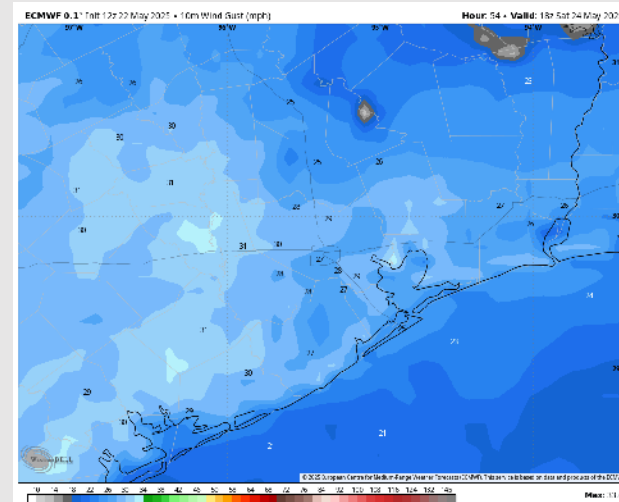
## Precip Image: 4 PM CT



**Wind Speed**  
**4 PM CT**



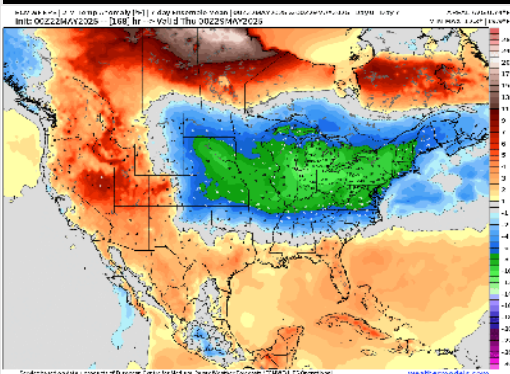
**MAX Wind**  
**Gusts**



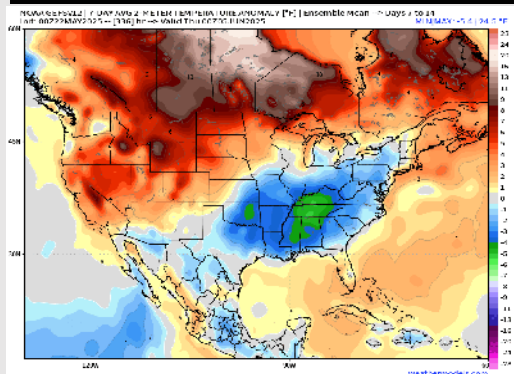


# Houston Pilots: 5/22/25

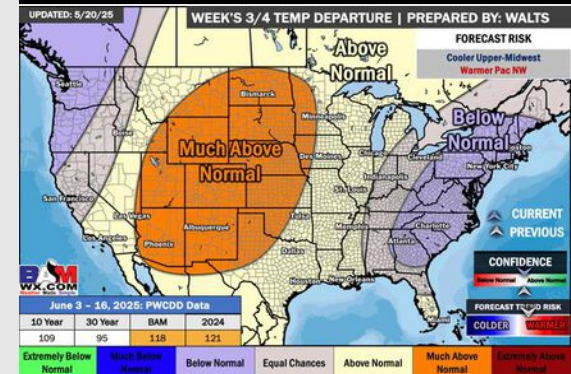
Next 7 Day Temperature Departure



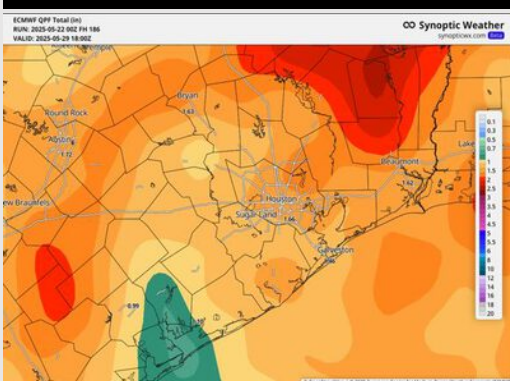
8-14 Day Temperature Departure



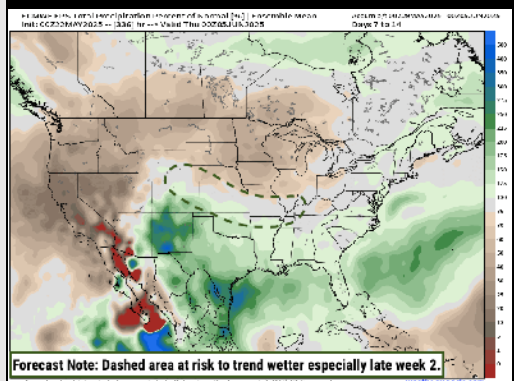
15-30 Day Temperature Departure



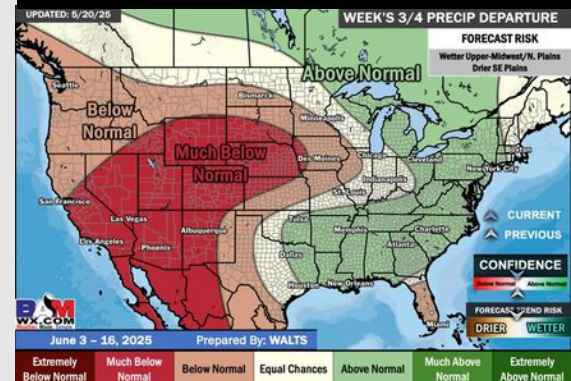
Next 7 Day Total Precipitation



8-14 Day % of Average Precip.



15-30 Day % of Average Precip.



- Temps are expected to be above normal the next 7 days. Scattered rain chances begin to enter the region early next week.
- Below normal temps and much above normal rainfall is favored for days 8 – 14.
- Above normal temperatures and near / slightly above normal precipitation chances are favored for the start of June.