



Timing of Severe Storm

Current: 6:40 PM CT 5/2/25

Forecaster: Wagner

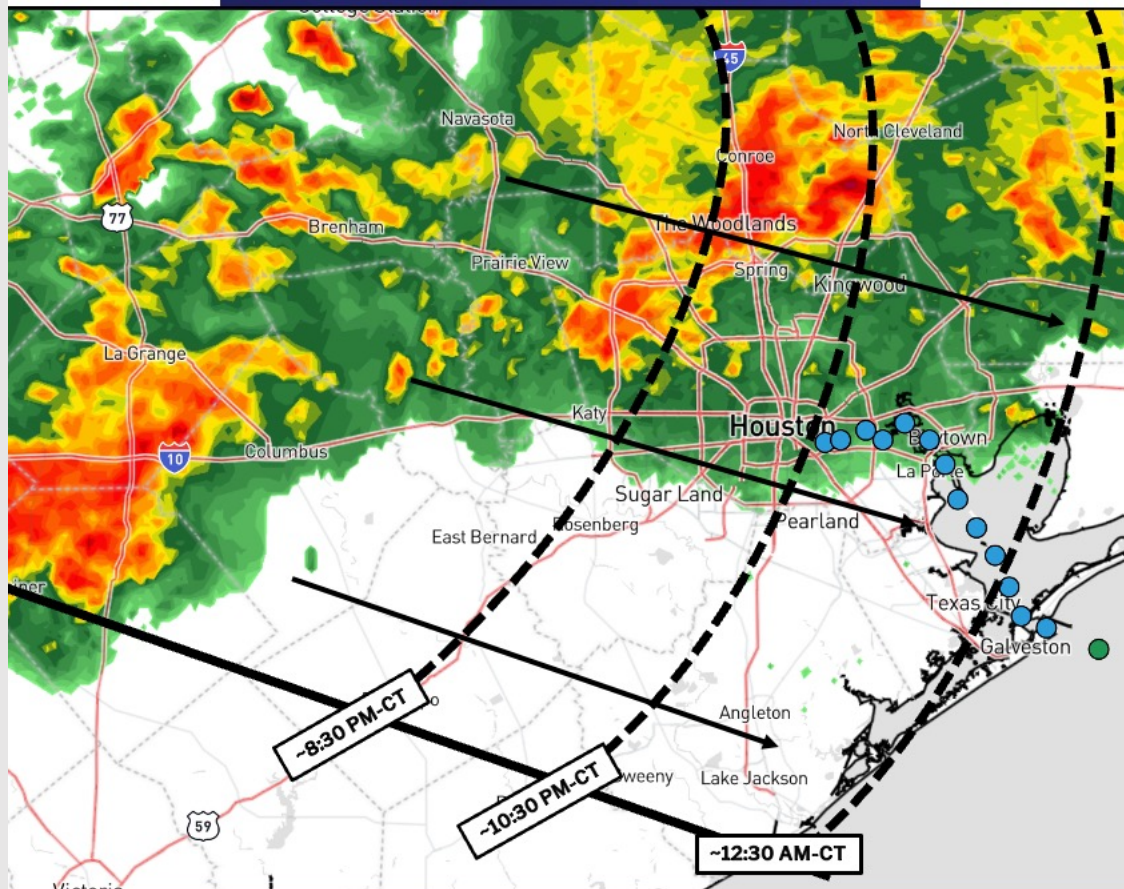


IMAGE NOTES:

- ✓ Graphic depicts the timing of the severe storm pushing E.
- ✓ Severe risks include winds up to 60 MPH and small hail.
- ✓ Localized totals up to 1.5" possible and rough waters expected along the coastline.

Houston Pilots Forecast Package



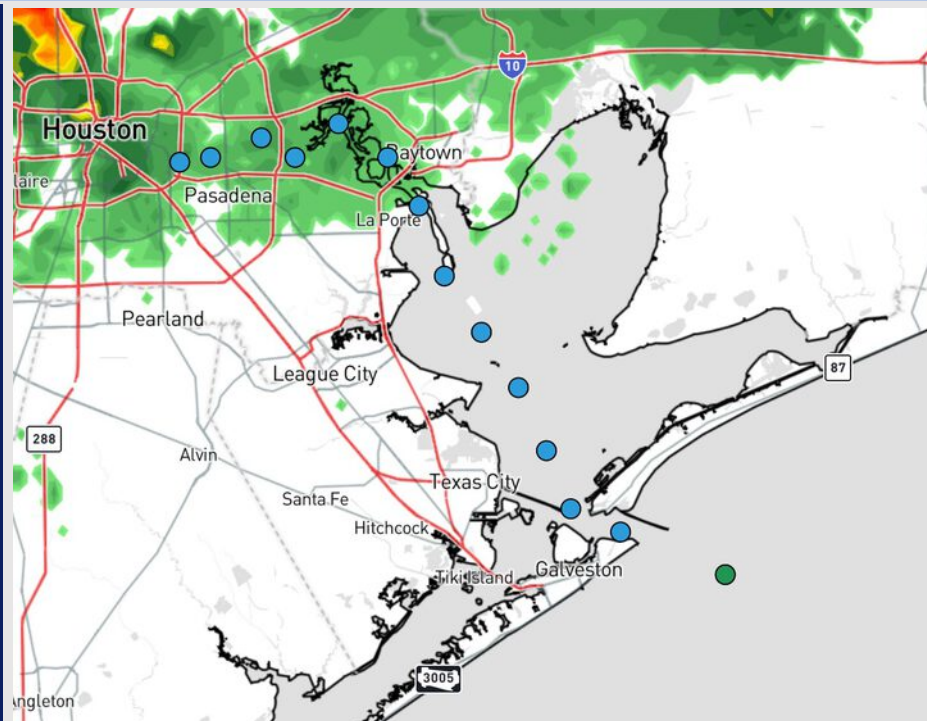
Updated: 7:00 PM CT

Friday, May 2, 2025

Forecaster: Tyler Riggles

Weather Headlines

- A line of strong to severe storms will impact all Stations after 6 PM. Frequent lightning, gusty winds of 35 – 50 kts, small hail, and rough waters are expected.
- Wave heights reaching 3 - 4' for the Boarding Station will be possible through SAT AM.
- Non-thunderstorm gusts of 25 kts will be possible for all Stations through SAT AM.



Current Radar: 7:00 PM CT

As always, please do not hesitate to reach out to us with any forecast questions at (317)-560-8122. Press 1 for forecast questions.

You can also access real-time forecast updates and 24/7 meteorological chat assistance on your [Clarity](#) app. Click [here](#) for login assistance.



Houston Pilots Visibility Chart (miles)



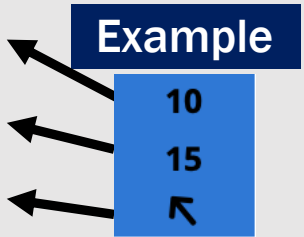
Visibility	Fri 4 pm	Fri 5 pm	Fri 6 pm	Fri 7 pm	Fri 8 pm	Fri 9 pm	Fri 10 pm	Fri 11 pm	Sat 12 am	Sat 1 am	Sat 2 am	Sat 3 am	Sat 4 am	Sat 5 am	Sat 6 am	Sat 7 am	Sat 8 am	Sat 9 am	Sat 10 am	Sat 11 am	Sat 12 pm	Sat 1 pm	Sat 2 pm	Sat 3 pm
Houston Pilots N - 610 Bridge	10	10	10	4.9	9	6.9	10	10	7.9	10	10	10	10	10	10	10	9	10	10	10	10	10	10	10
Houston Pilots M - Kinder 1	10	10	10	4.9	10	6.9	10	10	10	9	10	10	10	10	10	10	9	10	10	10	10	10	10	10
Houston Pilots L - Greens Bayou	10	10	10	4.9	10	6.9	10	10	10	9	10	10	10	10	10	10	9	10	10	10	10	10	10	10
Houston Pilots K - Shell Crude	10	10	10	4.9	10	6.9	10	10	10	9	10	10	10	10	10	10	9	10	10	10	10	10	10	10
Houston Pilots J - Lynchburg Ferries	10	10	10	4.9	9	6.9	10	10	10	9	10	10	10	10	10	10	9	10	10	10	10	10	10	10
Houston Pilots I - Exxon 3	10	10	10	5.9	6.9	6.9	10	10	10	9	10	10	10	10	10	10	9	10	10	10	10	10	10	10
Houston Pilots H - Morgans Point	10	10	10	7.9	6.9	6.9	10	10	10	9	10	10	10	10	10	10	9	10	10	10	10	10	10	10
Houston Pilots G - 75/76	10	10	9	7.9	5.9	6.9	7.9	10	6.9	10	7.9	7.9	10	7.9	7.9	10	6.9	7.9	9	7.9	9	9	10	10
Houston Pilots F - 63/64	10	10	9	7.9	5.9	6.9	6.9	10	6.9	10	7.9	7.9	10	7.9	7.9	10	6.9	7.9	9	7.9	9	9	10	10
Houston Pilots E - 51/52	9	9	7.9	7.9	5.9	6.9	6.9	10	6.9	9	7.9	7.9	10	9	9	10	9	9	7.9	6.9	6.9	7.9	10	10
Houston Pilots D - 37/38	9	9	7.9	7.9	6.9	6.9	6.9	10	6.9	9	7.9	7.9	10	10	9	10	9	9	7.9	6.9	6.9	7.9	10	10
Houston Pilots C - 25/26	9	9	7.9	7.9	7.9	6.9	6.9	9	7.9	9	7.9	7.9	10	10	10	10	9	9	6.9	6.9	6.9	6.9	10	10
Houston Pilots B - 11/12	7.9	7.9	7.9	7.9	6.9	6.9	6.9	9	7.9	9	7.9	7.9	10	10	10	10	9	9	6.9	5.9	6.9	6.9	10	10
Houston Pilots A - 1 & 2 Bravo	6.9	6.9	6.9	6.9	5.9	5.9	6.9	7.9	7.9	7.9	6.9	7.9	10	9	9	9	9	9	6.9	5.9	5.9	6.9	10	10

NOTE: This is automated data that may/may not agree with the official BAM thinking that's found on the daily slides or special visibility report slides. This data should be used as a guide only

Houston Pilots Wind Chart



Sustained Wind 10 Knots
Gusts 15 Knots
Wind from the SE



Wind	Fri 4 pm	Fri 5 pm	Fri 6 pm	Fri 7 pm	Fri 8 pm	Fri 9 pm	Fri 10 pm	Fri 11 pm	Sat 12 am	Sat 1 am	Sat 2 am	Sat 3 am	Sat 4 am	Sat 5 am	Sat 6 am	Sat 7 am	Sat 8 am	Sat 9 am	Sat 10 am	Sat 11 am	Sat 12 pm	Sat 1 pm	Sat 2 pm	Sat 3 pm
Houston Pilots N - 610 Bridge	12 23 ↑	10 22 ↑	10 21 ↑	10 18 ↖	8 16 ↖	8 14 ↖	6 13 ↖	6 12 ↘	6 10 ↑	5 9 ↑	5 9 ↘	5 9 ↘	6 10 ↓	6 13 ↓	7 14 ↓	7 15 ↓	8 16 ↓	8 17 ↓	8 17 ↓	9 18 ↓	10 18 ↓	10 20 ↓	10 18 ↓	10 20 ↓
Houston Pilots M - Kinder 1	12 23 ↑	12 22 ↑	10 21 ↑	10 18 ↖	8 16 ↖	7 14 ↖	6 12 ↖	6 12 ↘	6 10 ↑	5 9 ↑	5 9 ↘	5 9 ↘	6 10 ↓	6 13 ↓	7 14 ↓	7 15 ↓	8 16 ↓	8 17 ↓	8 17 ↓	9 18 ↓	10 18 ↓	10 20 ↓	10 18 ↓	9 20 ↓
Houston Pilots L - Greens Bayou	12 23 ↑	12 22 ↑	10 21 ↑	9 18 ↖	8 16 ↖	7 13 ↖	6 12 ↖	6 10 ↘	6 10 ↑	5 9 ↑	5 9 ↘	5 9 ↘	6 10 ↓	6 12 ↓	6 14 ↓	7 15 ↓	8 16 ↓	8 17 ↓	8 17 ↓	9 18 ↓	10 18 ↓	10 20 ↓	10 18 ↓	9 20 ↓
Houston Pilots K - Shell Crude	12 23 ↑	12 22 ↑	10 21 ↑	9 18 ↖	8 16 ↖	7 13 ↖	6 12 ↖	6 10 ↑	6 10 ↑	5 9 ↑	5 9 ↘	5 9 ↘	6 10 ↓	6 12 ↓	6 14 ↓	7 15 ↓	8 16 ↓	8 17 ↓	8 17 ↓	9 18 ↓	10 18 ↓	10 20 ↓	10 18 ↓	10 20 ↓
Houston Pilots J - Lynchburg Ferries	13 23 ↑	12 22 ↑	10 21 ↑	9 18 ↖	8 16 ↖	7 13 ↖	6 12 ↖	6 10 ↖	5 10 ↑	5 9 ↑	5 9 ↘	5 9 ↘	5 10 ↓	6 12 ↓	6 13 ↓	7 14 ↓	8 16 ↓	8 16 ↓	8 17 ↓	9 18 ↓	10 18 ↓	10 18 ↓	10 18 ↓	10 18 ↓
Houston Pilots I - Exxon 3	14 23 ↑	14 22 ↑	13 21 ↑	13 20 ↑	10 17 ↖	10 15 ↖	8 13 ↖	8 13 ↖	8 12 ↖	7 10 ↑	7 10 ↓	7 10 ↓	8 12 ↓	8 13 ↓	9 14 ↓	10 16 ↓	10 17 ↓	12 17 ↓	12 17 ↓	12 18 ↓	12 18 ↓	10 20 ↓	10 18 ↓	10 20 ↓
Houston Pilots H - Morgans Point	14 23 ↑	14 22 ↑	13 21 ↑	12 18 ↑	10 16 ↖	9 14 ↖	8 13 ↖	8 13 ↖	8 12 ↖	7 10 ↑	7 10 ↘	7 10 ↓	8 12 ↓	8 13 ↓	9 14 ↓	10 16 ↓	10 17 ↓	10 17 ↓	12 17 ↓	12 18 ↓	12 18 ↓	10 20 ↓	10 18 ↓	10 20 ↓
Houston Pilots G - 75/76	15 24 ↑	15 24 ↑	14 22 ↑	13 20 ↑	12 17 ↖	10 15 ↖	10 14 ↖	9 14 ↖	8 13 ↖	8 13 ↖	8 13 ↖	8 13 ↖	9 13 ↓	10 15 ↓	10 16 ↓	12 17 ↓	13 17 ↓	13 18 ↓	13 18 ↓	13 20 ↓	13 20 ↓	13 20 ↓	12 20 ↓	12 20 ↓
Houston Pilots F - 63/64	15 24 ↑	15 23 ↑	14 22 ↑	13 20 ↑	12 17 ↖	10 15 ↖	10 14 ↖	9 14 ↖	9 13 ↖	8 13 ↖	9 13 ↖	9 13 ↖	9 14 ↓	10 15 ↓	10 16 ↓	12 17 ↓	13 17 ↓	13 18 ↓	13 18 ↓	13 20 ↓	13 20 ↓	13 20 ↓	12 20 ↓	12 20 ↓
Houston Pilots E - 51/52	15 24 ↑	15 23 ↑	14 22 ↑	13 20 ↑	10 16 ↑	10 15 ↓	10 14 ↖	9 14 ↖	9 13 ↖	9 13 ↖	8 13 ↑	9 13 ↘	9 13 ↓	10 15 ↓	10 16 ↓	12 17 ↓	13 17 ↓	13 18 ↓	13 18 ↓	14 20 ↓	13 21 ↓	13 20 ↓	13 20 ↓	12 20 ↓
Houston Pilots D - 37/38	15 24 ↑	15 23 ↑	13 22 ↑	13 18 ↑	10 16 ↑	10 15 ↖	9 14 ↖	9 14 ↖	9 13 ↖	8 13 ↖	8 13 ↖	8 13 ↖	9 13 ↓	10 14 ↓	10 15 ↓	12 17 ↓	13 17 ↓	13 18 ↓	13 18 ↓	14 20 ↓	13 21 ↓	13 20 ↓	13 20 ↓	13 20 ↓
Houston Pilots C - 25/26	15 23 ↑	14 22 ↑	13 21 ↑	12 18 ↑	10 16 ↑	10 14 ↑	9 14 ↖	9 14 ↖	8 13 ↖	8 13 ↖	8 13 ↖	8 13 ↖	9 13 ↓	9 14 ↓	10 15 ↓	12 16 ↓	13 17 ↓	13 18 ↓	13 18 ↓	14 20 ↓	14 21 ↓	13 20 ↓	13 20 ↓	13 20 ↓
Houston Pilots B - 11/12	15 22 ↑	14 21 ↑	13 20 ↑	10 17 ↑	9 15 ↑	9 14 ↑	8 13 ↖	8 13 ↖	8 12 ↖	8 12 ↖	8 12 ↖	8 13 ↖	8 13 ↓	8 14 ↓	9 15 ↓	10 16 ↓	12 17 ↓	12 17 ↓	12 17 ↓	13 20 ↓	13 20 ↓	13 20 ↓	13 18 ↓	12 18 ↓
Houston Pilots A - 1 & 2 Bravo	15 22 ↑	14 21 ↑	13 20 ↑	12 18 ↑	10 16 ↑	10 15 ↖	10 15 ↖	10 15 ↖	9 14 ↖	9 14 ↖	9 14 ↖	9 14 ↖	9 14 ↓	10 15 ↓	10 16 ↓	12 16 ↓	13 17 ↓	13 17 ↓	13 18 ↓	13 20 ↓	13 20 ↓	13 20 ↓	13 18 ↓	12 18 ↓

NOTE: This is automated data that may/may not agree with the official BAM thinking that's found on the daily slides.
This data should be used as a guide only.

Houston Pilots: FRI. 5/2/2025

Forecast Discussion

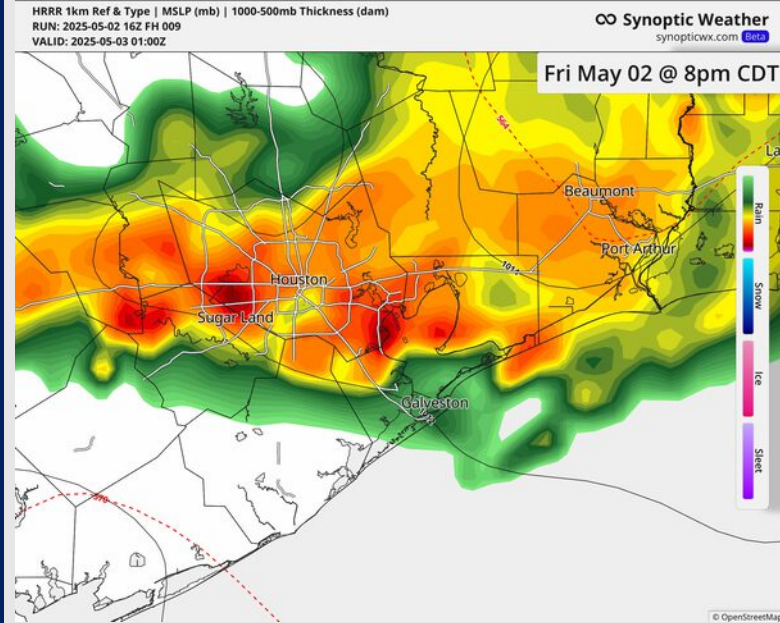
Precip: Strong to severe storms will gradually slide into the area after 6 PM, impacting all Stations. Frequent lightning, gusty winds of 35 – 50 kts, small hail, and rough waters are expected.

Wind: Winds from the S will become variable after 5 PM. **N of Morgan's Point:** Winds will be at 6 – 11 kts through 3 PM, increasing to 13 – 17 kts after that time. **S of Morgan's Point:** Winds will be at 15 – 20 kts through 8 PM, increasing to 20 – 25 kts through 12 AM. **Non-thunderstorm gusts up to 25 kts will be possible for all Stations for the rest of the day.**

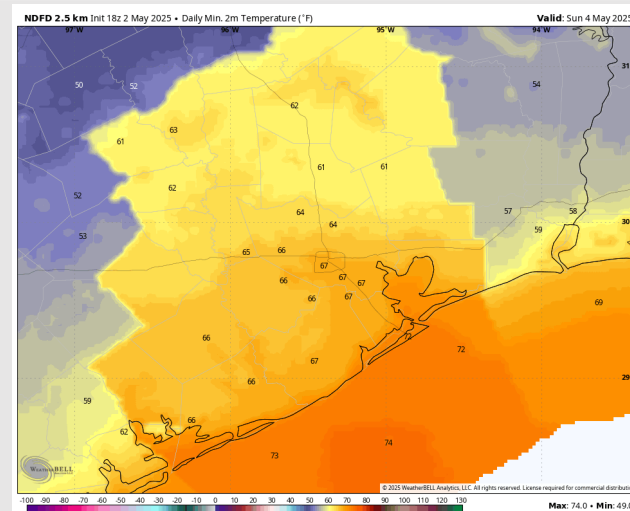
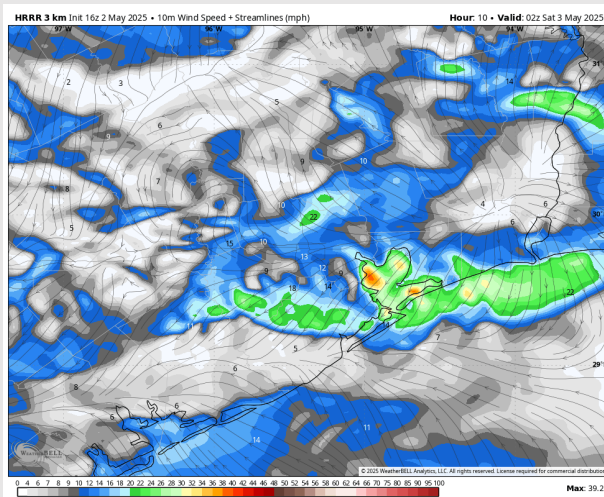
Low Temps: **N of Morgan's Point:** Mid-Upper 60s F. **S of Morgan's Point:** Low 70s F.

Visibility: No fog concerns for the rest of the day, however reduced visibilities will be possible under heavier downpours.

Precip Image: 8 PM CT



Wind Speed:
9 PM CT



Low Temps
SAT AM

Houston Pilots: SAT. 5/3/2025

Forecast Discussion

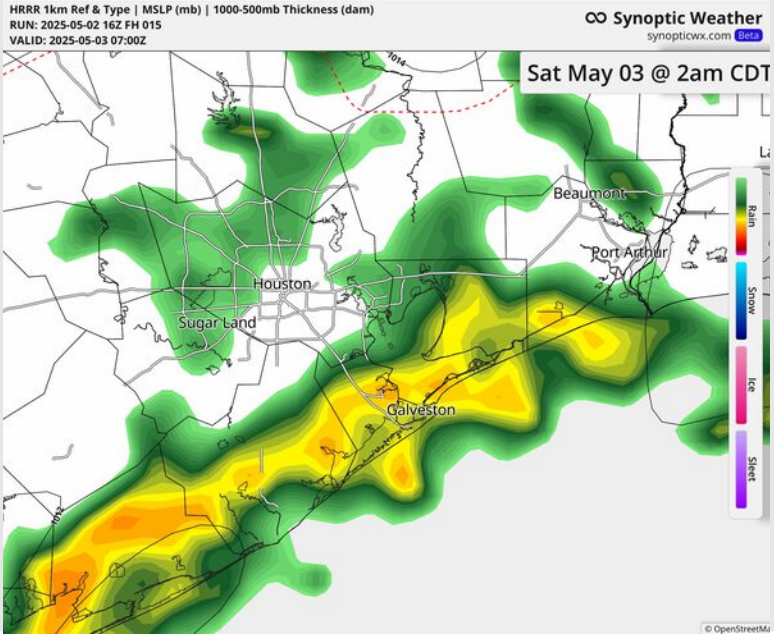
Precip: Showers expected from 12 – 5 AM Saturday, with dry conditions favored the rest of the day after that time.

Wind: Variable winds will settle out of the N after 1 AM and remain from that direction throughout Saturday. **N of Morgan’s Point:** Winds will be at 4 – 9 kts throughout the day. **S of Morgan’s Point:** Winds will be at 15 – 20 kts through 11 AM, decreasing to 7 – 12 kts for the rest of the day after that time. A few gusts of 20 – 25 kts will be possible for all Stations through 11 AM.

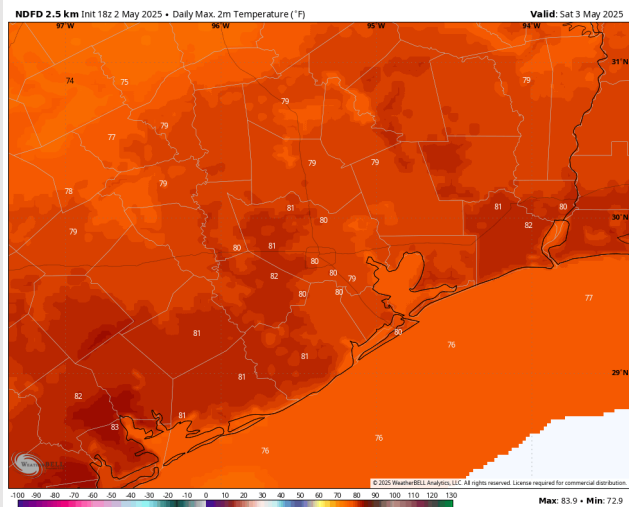
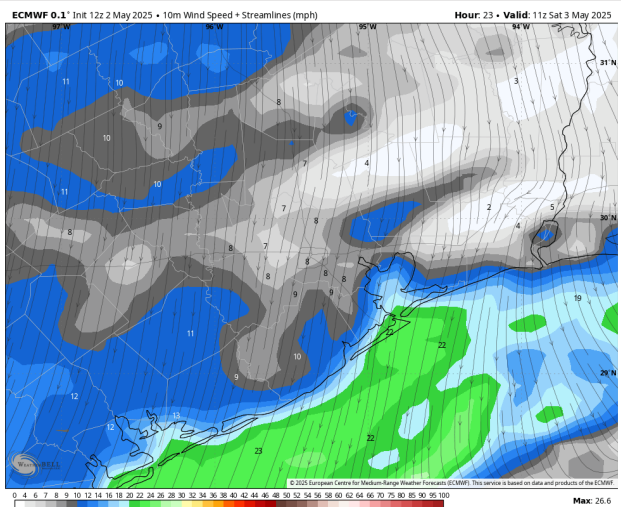
High Temps: **N of Morgan’s Point:** Upper 70s F. **S of Morgan’s Point:** Upper 70s F.

Visibility: No fog concerns for Saturday. Reduced visibility possible under heavier showers in the early AM.

Precip Image: 3 AM CT



Wind Speed
6 AM CT



High Temps
Saturday

Houston Pilots: SUN. 5/4/2025

Forecast Discussion

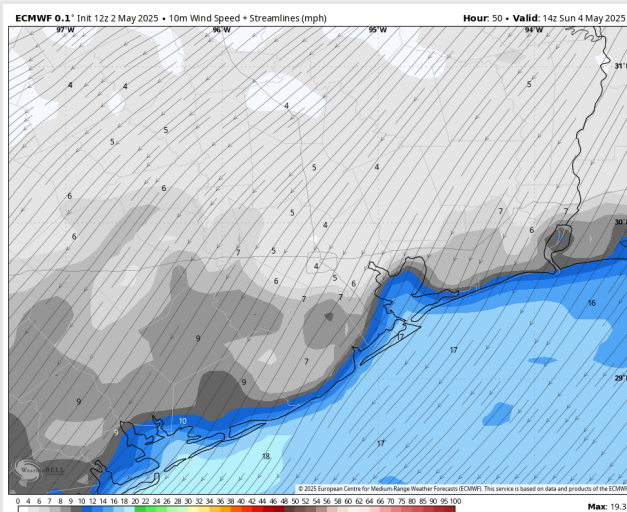
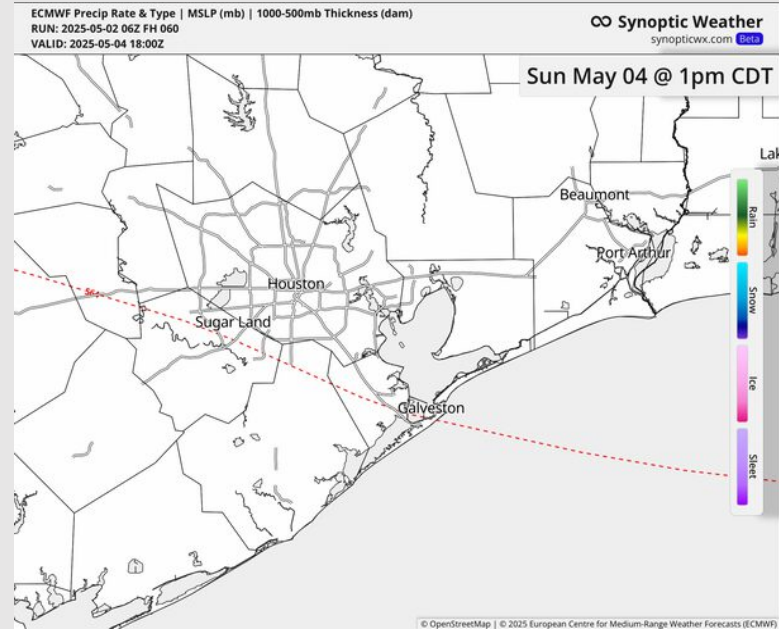
Precip: Favoring dry conditions for Sunday.

Wind: Winds will be out of the NE throughout the day. **N of Morgan's Point:** Winds will be at 2 – 7 kts throughout Sunday. **S of Morgan's Point:** Winds will be at 10 - 15 kts through 1PM, decreasing to 6 – 11 kts for the remainder of Sunday.

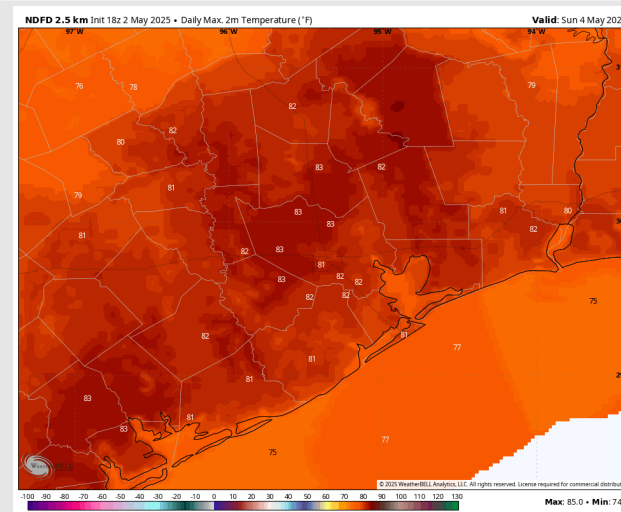
High Temps: **N of Morgan's Point:** Low 80s F. **S of Morgan's Point:** Upper 70s F.

Visibility: No visibility concerns Sunday.

Precip Image: 1 PM CT



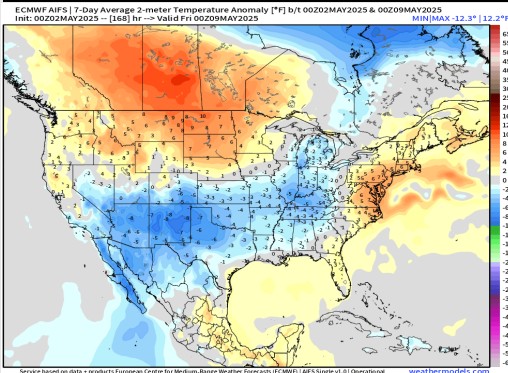
Wind Speed:
9 AM CT



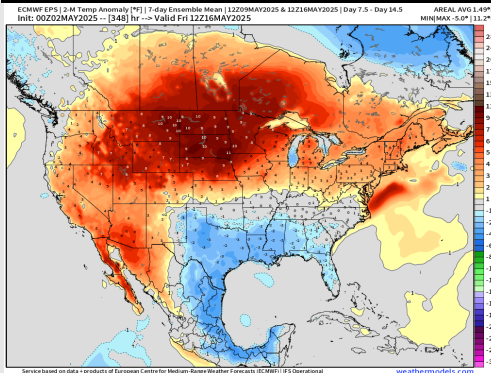
High Temps
Sunday

Houston Pilots: 5/2/25

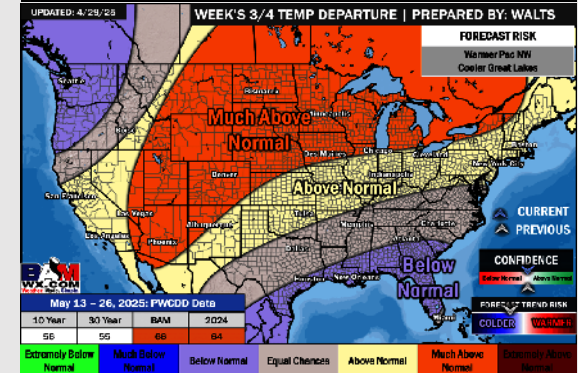
Next 7 Day Temperature Departure



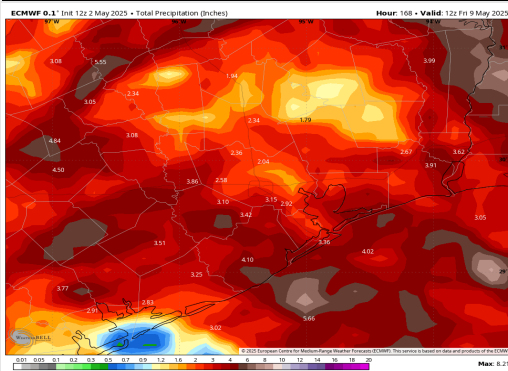
8-14 Day Temperature Departure



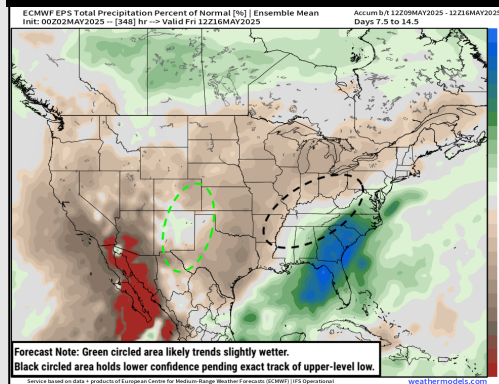
15-30 Day Temperature Departure



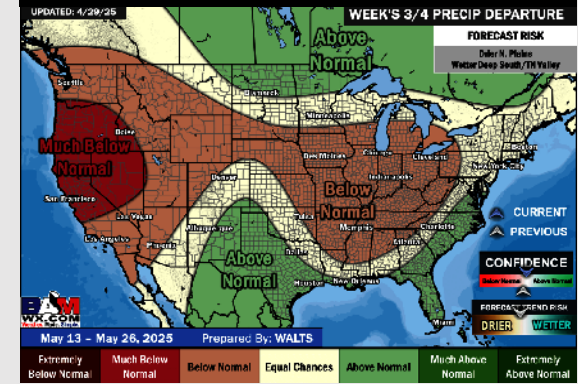
Next 7 Day Total Precipitation



8-14 Day % of Average Precip.



15-30 Day % of Average Precip.



- Temps are expected to be near normal the next 7 days. Scattered rain showers expected throughout the week with heaviest rain over the weekend and mid-week next week.
- Below normal temps and below normal rainfall is favored 8 - 14 days from now.
- Below normal temperatures and above normal precipitation chances are favored for mid May.