

# Houston Pilots Forecast Package



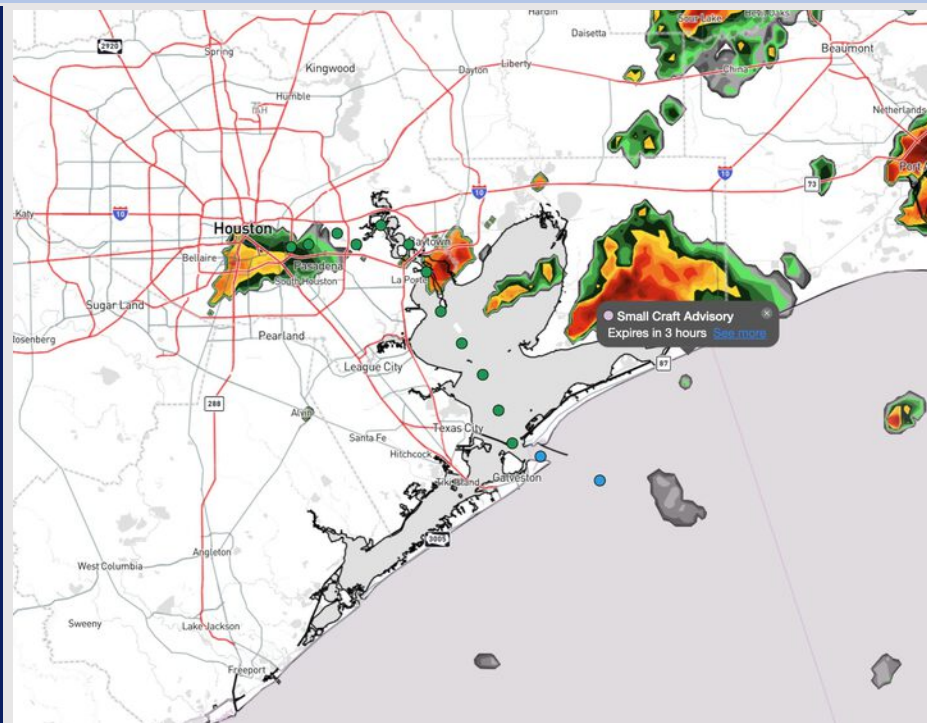
Updated: 10:00 PM CT

Tuesday, May 6, 2025

Forecaster: John Kemper

## Weather Headlines

- Non-thunderstorm wind gusts of 20 - 30 kts possible for all stations at times over the next 36 hours.
- **Severe storms in play for all Stations for Wednesday AM. Main risks expected to be lightning, 35 – 45 kt gusts, and large hail.**
- **Zulu Port Conditions are in effect due to wave heights reaching 6' at the Boarding Station.**



Current Radar: 9:40 PM CT

As always, please do not hesitate to reach out to us with any forecast questions at **(317)-560-8122**. Press **1** for forecast questions.

You can also access real-time forecast updates and 24/7 meteorological chat assistance on your **Clarity** app. Click [here](#) for login assistance.



# Houston Pilots Port Trigger Update

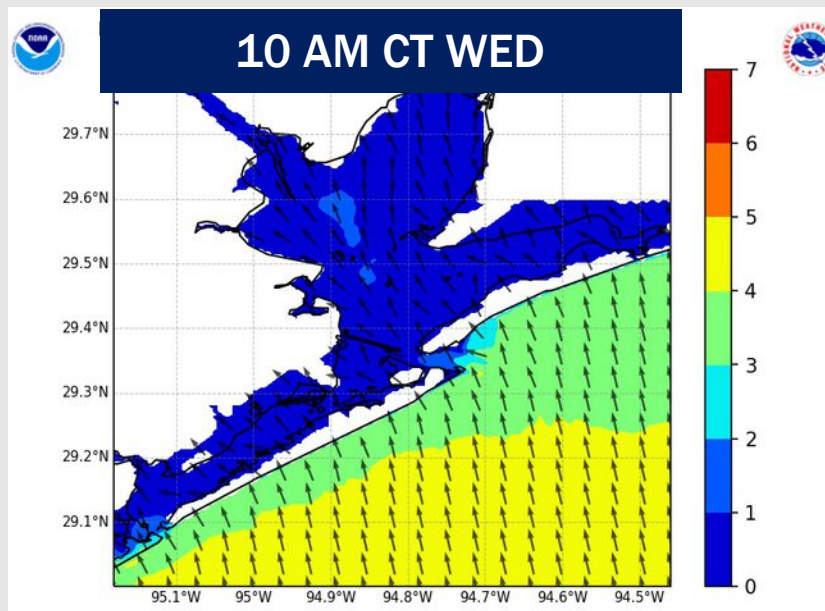
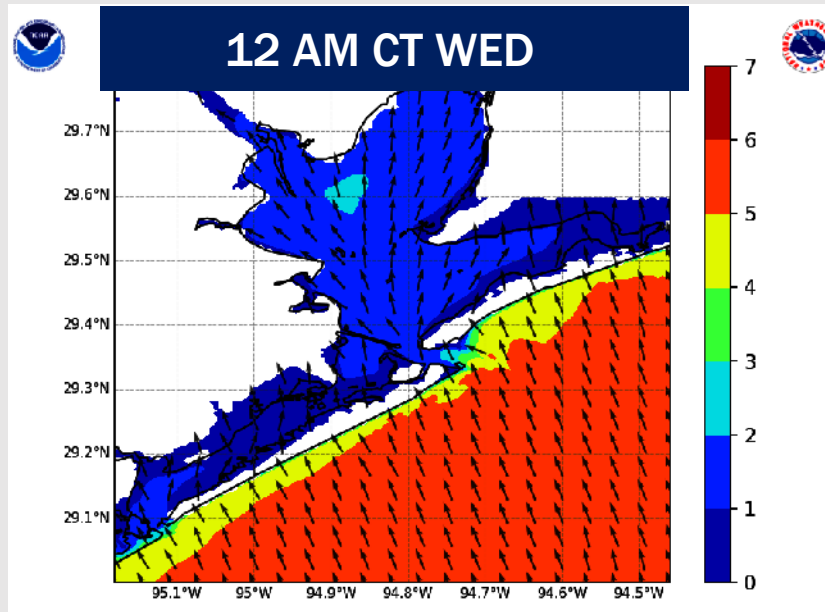
Port Condition	34 KTS+ Sustained Wind Trigger Reached at:	6 Foot Wave Trigger Reached at:	Time Remaining/Trigger Ends At:
Victor	—	—	—
Whiskey	—	—	—
X-Ray	—	—	—
Yankee	—	—	—
Zulu	—	CURRENT	7 AM WED

Port Condition	Trigger Definition	Trigger Reached?
Victor	Hurricane entering/developing in Gulf of Mexico that's a threat to the area	N/A
Whiskey	72 hours prior to predicted sustained winds of 34+ KTS	N/A
X-Ray	48 hours prior to predicted sustained winds of 34+ KTS or 6' wave height	PAST
Yankee	24 hours prior to predicted sustained winds of 34+ KTS or 6' wave height	PAST
Zulu	12 hours prior to predicted sustained winds of 34+ KTS or 6' wave height	Yes

**NOTES:**

Due to elevated winds and strong gusts, wave heights have reached the 6' threshold at the Boarding Station. 6' wave heights are expected to persist through 7 AM Wednesday. Wave heights expected to drop below 5' after 10 AM on Wednesday.

# Wave Height Forecast Update



Due to elevated winds and strong gusts, wave heights have reached near 6' at the Boarding Station.

6' wave heights are expected to persist through 7 AM Wednesday. Wave heights expected to drop below 5' after 10 AM on Wednesday.

# Houston Pilots Visibility Chart (miles)



Visibility	Tue 10 pm	Tue 11 pm	Wed 12 am	Wed 1 am	Wed 2 am	Wed 3 am	Wed 4 am	Wed 5 am	Wed 6 am	Wed 7 am	Wed 8 am	Wed 9 am	Wed 10 am	Wed 11 am	Wed 12 pm	Wed 1 pm	Wed 2 pm	Wed 3 pm	Wed 4 pm	Wed 5 pm	Wed 6 pm	Wed 7 pm	Wed 8 pm	Wed 9 pm
Houston Pilots N - 610 Bridge	5.9	6.9	5.9	5.9	4.9	4.9	4.9	4.9	4.9	4.9	3.9	4.9	6.9	6.9	9	10	10	10	10	10	10	10	10	9
Houston Pilots M - Kinder 1	4.9	6.9	5.9	5.9	4.9	4.9	4.9	4.9	4.9	4.9	3.9	4.9	6.9	6.9	7.9	9	10	10	10	10	10	10	9	9
Houston Pilots L - Greens Bayou	4.9	5.9	4.9	4.9	4.9	4.9	4.9	4.9	3.9	3.9	3.9	3.9	5.9	6.9	6.9	7.9	7.9	7.9	9	10	10	9	7.9	9
Houston Pilots K - Shell Crude	4.9	4.9	4.9	4.9	4.9	4.9	4.9	4.9	3.9	3.9	3.9	3.9	5.9	6.9	6.9	6.9	6.9	6.9	9	10	9	7.9	7.9	6.9
Houston Pilots J - Lynchburg Ferries	4.9	4.9	4.9	4.9	4.9	4.9	4.9	4.9	3.9	3.9	2.9	3.9	5.9	6.9	6.9	7.9	6.9	7.9	9	10	10	9	7.9	9
Houston Pilots I - Exxon 3	4.9	4.9	4.9	4.9	4.9	4.9	4.9	4.9	3.9	3.9	3.9	3.9	5.9	6.9	6.9	6.9	6.9	6.9	7.9	10	9	7.9	7.9	6.9
Houston Pilots H - Morgans Point	4.9	4.9	4.9	4.9	4.9	4.9	4.9	4.9	4.9	4.9	3.9	3.9	5.9	5.9	6.9	6.9	6.9	6.9	6.9	9	9	6.9	6.9	6.9
Houston Pilots G - 75/76	3.9	4.9	4.9	4.9	4.9	4.9	4.9	4.9	4.9	4.9	3.9	3.9	4.9	4.9	5.9	5.9	5.9	5.9	5.9	4.9	4.9	3.9	3.9	9
Houston Pilots F - 63/64	3.9	4.9	4.9	4.9	4.9	4.9	4.9	4.9	4.9	4.9	3.9	3.9	4.9	4.9	5.9	5.9	5.9	5.9	5.9	4.9	4.9	3.9	3.9	9
Houston Pilots E - 51/52	4.9	4.9	4.9	4.9	4.9	4.9	4.9	4.9	4.9	4.9	2.9	3.9	4.9	4.9	5.9	5.9	5.9	4.9	5.9	4.9	4.9	3.9	3.9	9
Houston Pilots D - 37/38	4.9	4.9	4.9	4.9	4.9	4.9	4.9	4.9	4.9	4.9	2.9	3.9	4.9	4.9	5.9	5.9	5.9	4.9	5.9	4.9	4.9	3.9	3.9	8
Houston Pilots C - 25/26	4.9	4.9	4.9	4.9	4.9	4.9	4.9	5.9	4.9	4.9	2.9	3.9	4.9	5.9	5.9	5.9	5.9	4.9	5.9	4.9	4.9	3.9	3.9	8
Houston Pilots B - 11/12	4.9	4.9	4.9	4.9	4.9	4.9	4.9	5.9	4.9	4.9	2.9	3.9	5.9	4.9	5.9	4.9	5.9	4.9	4.9	4.9	3.9	3.9	3.9	8
Houston Pilots A - 1 & 2 Bravo	3.9	4.9	4.9	4.9	4.9	4.9	4.9	4.9	4.9	3.9	2.5	3.9	4.9	4.9	4.9	4.9	4.9	4.9	4.9	3.9	3.9	2.9	2.9	7

NOTE: This is automated data that may/may not agree with the official BAM thinking that's found on the daily slides or special visibility report slides. This data should be used as a guide only

# Houston Pilots Wind Chart



Forecast Confidence

Above Normal

Below Normal

Sustained Wind 10 Knots

Gusts 15 Knots

Wind from the SE

Example

10

15

↖

Wind	Tue 10 pm	Tue 11 pm	Wed 12 am	Wed 1 am	Wed 2 am	Wed 3 am	Wed 4 am	Wed 5 am	Wed 6 am	Wed 7 am	Wed 8 am	Wed 9 am	Wed 10 am	Wed 11 am	Wed 12 pm	Wed 1 pm	Wed 2 pm	Wed 3 pm	Wed 4 pm	Wed 5 pm	Wed 6 pm	Wed 7 pm	Wed 8 pm	Wed 9 pm
Houston Pilots N - 610 Bridge	8 16 ↖	7 14 ↑	6 13 ↖	6 12 ↖	6 10 ↖	5 10 ↖	5 9 ↖	5 9 ↖	5 9 ↖	5 9 ↖	5 9 ↖	5 9 ↖	5 10 ↖	6 10 ↖	6 12 ↖	6 13 ↖	7 13 ↖	7 14 ↖	7 14 ↖	8 15 ↖	8 14 ↖	8 15 ↖	8 14 ↖	6 13 ↖
Houston Pilots M - Kinder 1	8 16 ↖	7 14 ↑	6 13 ↖	6 12 ↖	6 10 ↖	5 10 ↖	5 10 ↖	5 9 ↖	5 9 ↖	5 9 ↖	5 10 ↖	5 10 ↖	5 10 ↖	6 10 ↖	6 12 ↖	6 13 ↖	7 13 ↖	7 14 ↖	7 14 ↖	8 15 ↖	8 15 ↖	8 15 ↖	8 14 ↖	6 13 ↖
Houston Pilots L - Greens Bayou	8 16 ↖	7 15 ↑	6 13 ↖	6 12 ↖	6 12 ↖	5 10 ↖	5 10 ↖	5 10 ↖	5 9 ↖	5 9 ↖	5 10 ↖	5 10 ↖	5 10 ↖	6 10 ↖	6 12 ↖	6 13 ↖	7 14 ↖	7 14 ↖	7 14 ↖	8 15 ↖	8 15 ↖	8 15 ↖	7 13 ↖	6 13 ↖
Houston Pilots K - Shell Crude	8 16 ↖	7 15 ↑	6 14 ↖	6 13 ↖	6 12 ↖	5 10 ↖	5 10 ↖	5 10 ↖	5 10 ↖	5 10 ↖	5 10 ↖	5 10 ↖	6 10 ↖	6 10 ↖	6 12 ↖	6 13 ↖	7 14 ↖	7 14 ↖	8 14 ↖	8 15 ↖	8 15 ↖	8 15 ↖	7 14 ↖	6 13 ↖
Houston Pilots J - Lynchburg Ferries	8 16 ↖	7 15 ↑	6 14 ↖	6 12 ↖	6 12 ↖	5 10 ↖	5 10 ↖	5 10 ↖	5 9 ↖	5 9 ↖	5 10 ↖	5 10 ↖	5 10 ↖	6 10 ↖	6 12 ↖	6 13 ↖	7 14 ↖	7 14 ↖	8 14 ↖	8 15 ↖	8 15 ↖	8 15 ↖	7 14 ↖	6 13 ↖
Houston Pilots I - Exxon 3	12 18 ↑	10 17 ↑	10 16 ↑	9 15 ↑	8 14 ↖	8 13 ↖	8 13 ↖	8 13 ↖	8 13 ↖	8 12 ↖	8 13 ↖	8 13 ↖	8 12 ↖	8 12 ↖	8 13 ↖	8 15 ↖	8 15 ↖	9 15 ↖	9 15 ↖	9 15 ↖	10 16 ↖	10 15 ↖	10 15 ↖	9 14 ↖
Houston Pilots H - Morgans Point	12 18 ↖	10 17 ↑	10 16 ↑	9 15 ↖	8 14 ↖	8 14 ↖	8 13 ↖	8 13 ↖	8 13 ↖	8 13 ↖	8 13 ↖	8 13 ↖	8 12 ↖	8 12 ↖	8 13 ↖	8 15 ↖	8 15 ↖	9 15 ↖	9 15 ↖	9 15 ↖	10 16 ↖	10 15 ↖	10 15 ↖	9 14 ↖
Houston Pilots G - 75/76	14 20 ↑	13 20 ↑	13 17 ↑	12 17 ↖	10 16 ↖	10 16 ↖	10 15 ↖	10 15 ↖	10 15 ↖	10 15 ↖	10 15 ↖	9 15 ↖	9 14 ↖	9 14 ↖	8 14 ↖	9 15 ↖	9 15 ↖	9 16 ↖	10 17 ↖	10 17 ↖	10 18 ↖	12 17 ↖	12 17 ↖	10 15 ↖
Houston Pilots F - 63/64	14 21 ↑	13 20 ↑	13 18 ↑	12 17 ↖	10 16 ↖	10 16 ↖	10 16 ↖	10 16 ↖	10 16 ↖	10 15 ↖	10 15 ↖	10 15 ↖	9 15 ↖	9 14 ↖	9 14 ↖	9 15 ↖	9 15 ↖	9 16 ↖	10 16 ↖	10 17 ↖	10 18 ↖	12 17 ↖	12 17 ↖	10 15 ↖
Houston Pilots E - 51/52	15 21 ↑	14 20 ↑	13 20 ↑	13 17 ↖	12 17 ↖	12 17 ↖	12 16 ↖	10 16 ↖	10 16 ↖	10 16 ↖	10 16 ↖	10 15 ↖	10 15 ↖	10 15 ↖	10 15 ↖	10 16 ↖	10 16 ↖	10 17 ↖	10 17 ↖	10 17 ↖	10 18 ↖	12 17 ↖	12 17 ↖	10 16 ↖
Houston Pilots D - 37/38	15 22 ↑	14 21 ↑	14 20 ↑	13 18 ↖	13 17 ↖	12 17 ↖	12 17 ↖	10 16 ↖	10 16 ↖	10 16 ↖	10 15 ↖	10 15 ↖	10 15 ↖	10 15 ↖	10 15 ↖	10 16 ↖	10 16 ↖	10 17 ↖	10 17 ↖	10 17 ↖	10 17 ↖	12 17 ↖	12 16 ↖	10 15 ↖
Houston Pilots C - 25/26	15 22 ↑	14 21 ↑	13 20 ↑	13 18 ↖	12 17 ↖	12 17 ↖	12 17 ↖	10 16 ↖	10 16 ↖	10 16 ↖	10 15 ↖	10 15 ↖	10 15 ↖	10 15 ↖	10 15 ↖	10 15 ↖	10 17 ↖	10 17 ↖	10 17 ↖	10 17 ↖	10 17 ↖	10 16 ↖	10 16 ↖	10 15 ↖
Houston Pilots B - 11/12	14 21 ↑	13 20 ↑	13 20 ↑	12 17 ↖	10 17 ↖	10 17 ↖	10 17 ↖	10 16 ↖	10 16 ↖	10 16 ↖	10 15 ↖	10 15 ↖	9 15 ↖	9 15 ↖	10 15 ↖	10 15 ↖	10 16 ↖	10 16 ↖	10 16 ↖	10 16 ↖	10 16 ↖	10 16 ↖	10 15 ↖	10 15 ↖
Houston Pilots A - 1 & 2 Bravo	16 24 ↑	15 23 ↑	15 22 ↑	14 21 ↑	13 20 ↖	13 18 ↖	13 18 ↖	13 18 ↖	13 18 ↖	13 17 ↖	12 17 ↖	12 16 ↖	10 16 ↖	10 16 ↖	10 16 ↖	10 15 ↖	10 15 ↖	10 16 ↖	10 17 ↖	12 17 ↖	12 17 ↖	12 17 ↖	12 17 ↖	12 17 ↖

NOTE: This is automated data that may/may not agree with the official BAM thinking that's found on the daily slides.  
This data should be used as a guide only.



## Forecast Discussion

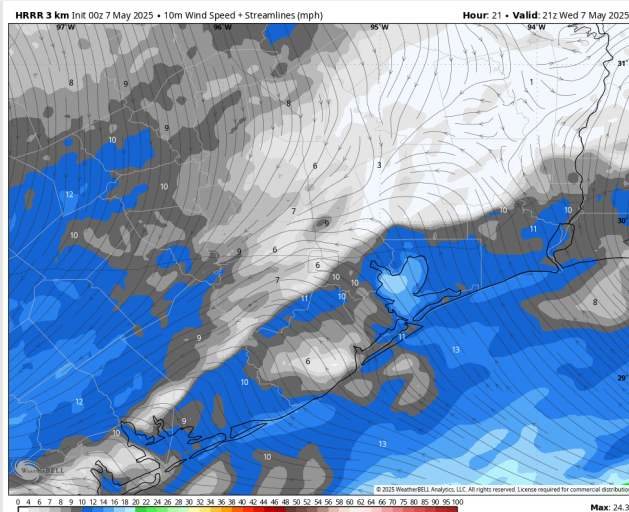
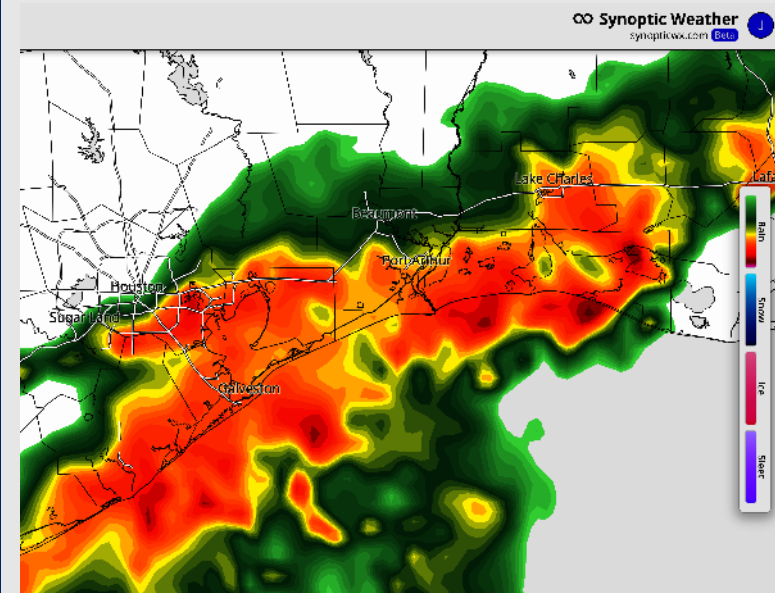
**Precip:** A wave of scattered storms will be possible from 12AM – 4AM (30%) before a widespread wave of heavy rain and thunderstorms moves through the area between 4AM – 10AM (80%). **A few storms embedded in the main line can contain gusts of 40-45 kts.** Isolated showers will be possible from 10AM to 5PM before scattered downpours / storms chances return after 5PM (60%).

**Wind:** Winds quickly shift to be out of the ESE after midnight, holding steady through 2PM before shifting back to out of the SE. **N of Morgan's Point:** Winds will be at 4 – 9 kts throughout the day. **S of Morgan's Point:** Winds will be at 15 – 20 kts through 5 PM, decreasing to 5 – 10 kts after that time. **Non thunderstorm wind gusts of 20 – 25 kts in play for Stations S of Morgan's Point through 12PM.** A few gusts up to 30 kts will be possible at the Boarding Station.

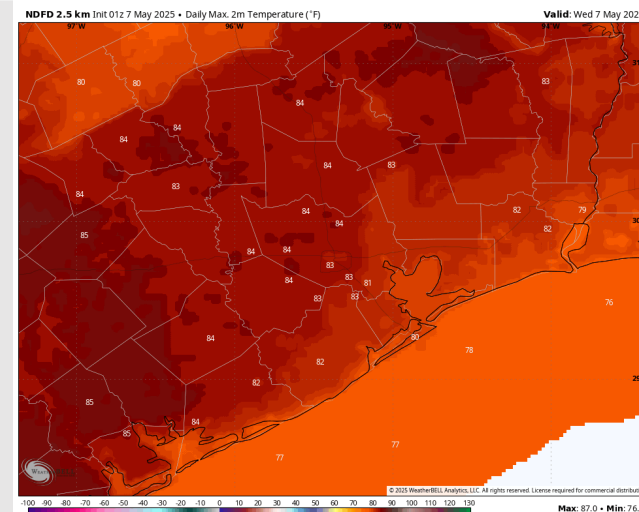
**High Temps:** **N of Morgan's Point:** Low 80s F. **S of Morgan's Point:** Near 80 F.

**Visibility:** No fog concerns for Wednesday, however visibilities may be reduced under heavy downpours.

## Precip Image: 8 AM CT



Wind Speed:  
4 PM CT



High Temps  
Today

# Houston Pilots: THU. 5/8/2025

## Forecast Discussion

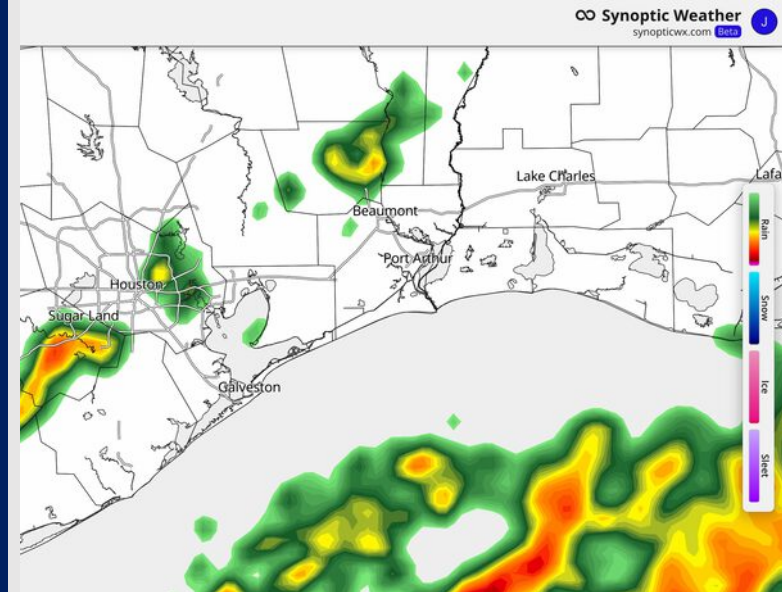
**Precip:** Scattered showers and storms will be possible from 12PM – 9PM. A few strong storms will be in the mix from 3PM to 9PM as the front “stalls” over the area. **Lightning and wind gusts of 30 – 35 kts will be a risk within storms.**

**Wind:** Winds will be out of the SE/ESE throughout the day, with a brief period blowing from the NE from 7AM to 1PM. **N of Morgan's Point:** Winds will be at 5 - 10 kts on Thursday. **S of Morgan's Point:** Winds will be at 3 – 8 kts, increasing to 13-18 kts after 12PM. **Gusts up to 20 kts will be possible for all stations after 10 AM through 7PM.**

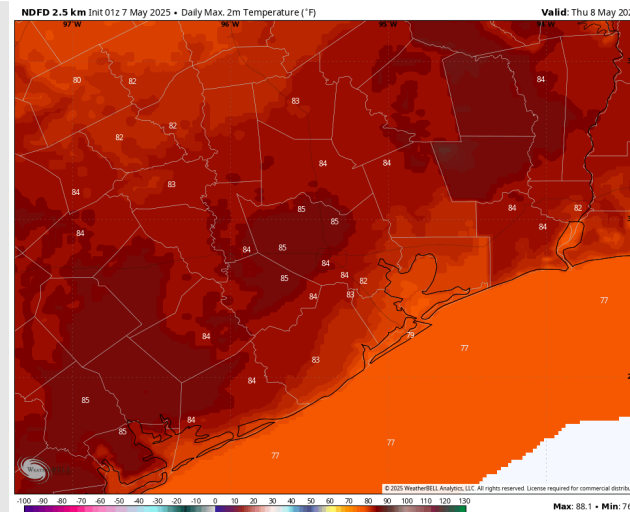
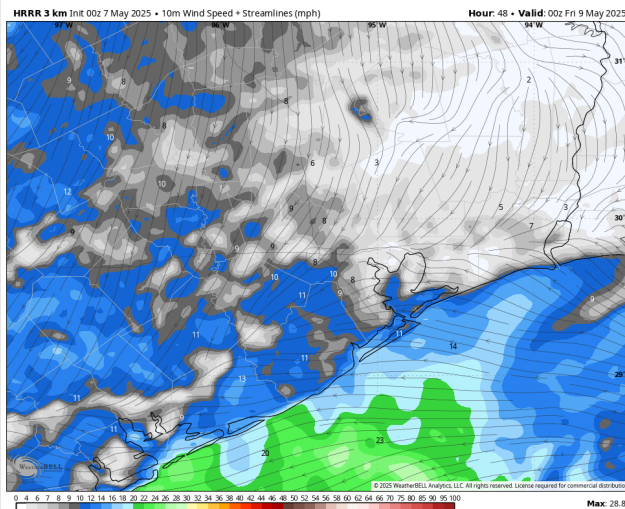
**High Temps:** **N of Morgan's Point:** Low 80s F. **S of Morgan's Point:** Upper 70s F.

**Visibility:** Visibilities may be reduced under heavy downpours, but no fog risks are favored.

## Precip Image: 5 PM CT



**Wind Speed:**  
7 PM CT



**High Temps**  
**Thursday**

# Houston Pilots: FRI. 5/9/2025

## Forecast Discussion

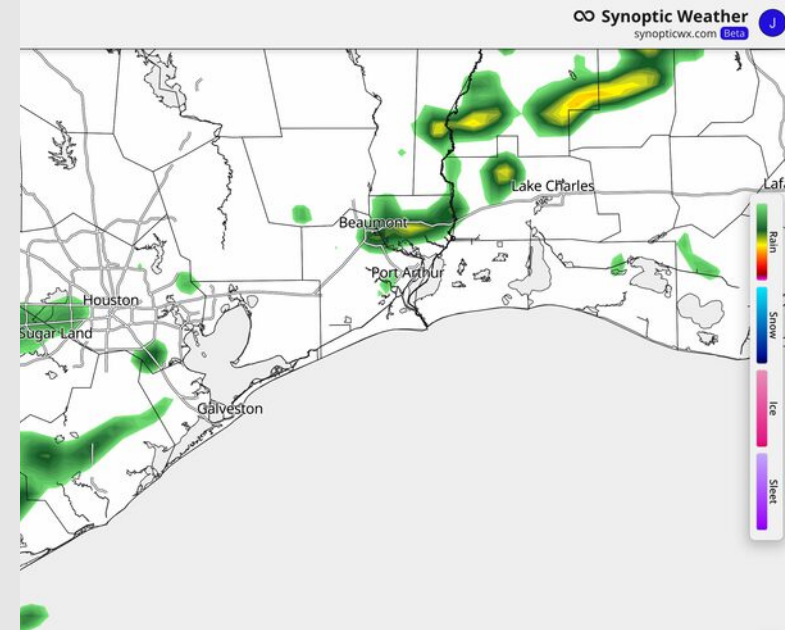
**Precip:** A few scattered downpours and storms will be possible from 3PM – 9PM on Friday (30%).

**Wind:** Winds will quickly shift from being out of the SE to out of the N between 12AM – 4AM as the front passes over. **N of Morgan's Point:** Winds will be at 5 – 10 kts for all of Friday. **S of Morgan's Point:** Winds will be at 10 – 15 kts for all of Friday. **Non-thunderstorm Gusts up to 25 kts will be in play through 7PM.**

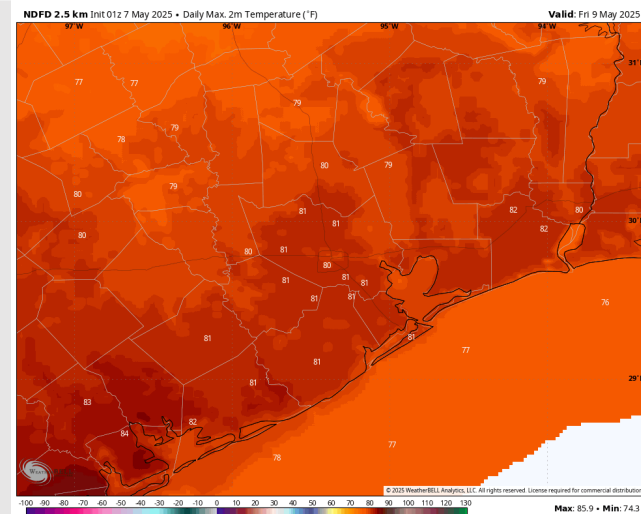
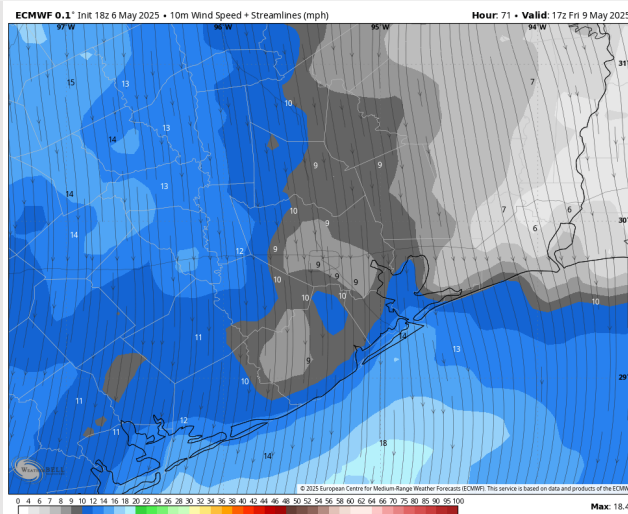
**High Temps:** **N of Morgan's Point:** Low 80s F. **S of Morgan's Point:** Upper 70s F.

**Visibility:** No fog concerns for Friday.

## Precip Image: 7 PM CT



Wind Speed  
11 AM CT

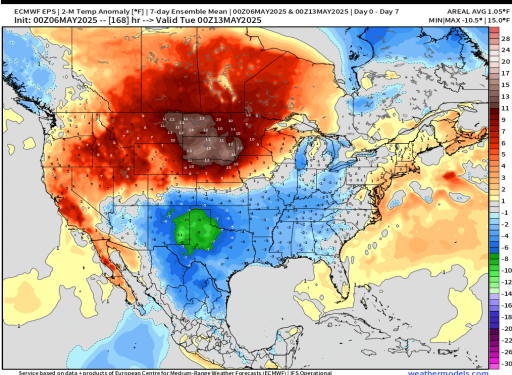


High Temps  
Friday

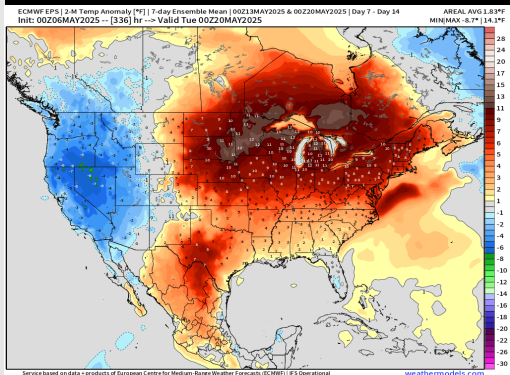


# Houston Pilots: 5/7/25

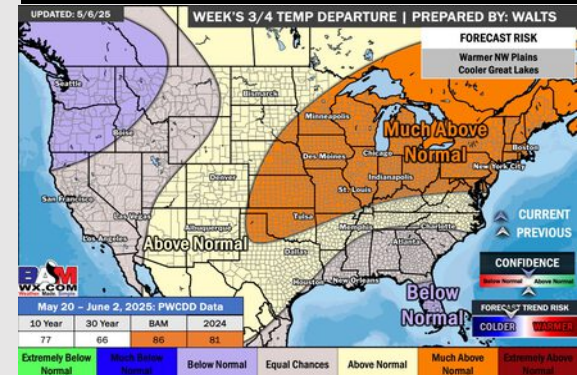
## Next 7 Day Temperature Departure



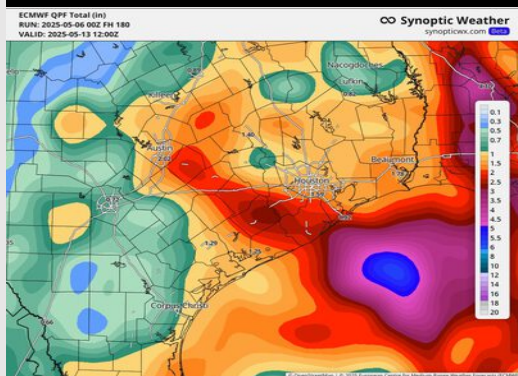
## 8-14 Day Temperature Departure



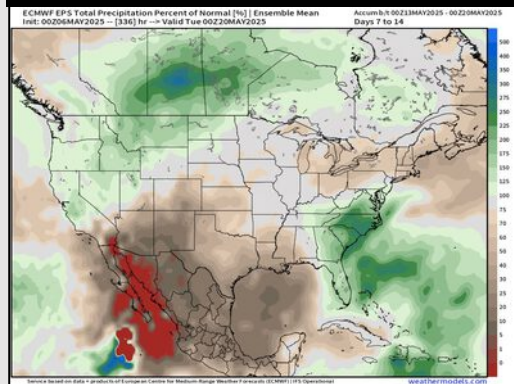
## 15-30 Day Temperature Departure



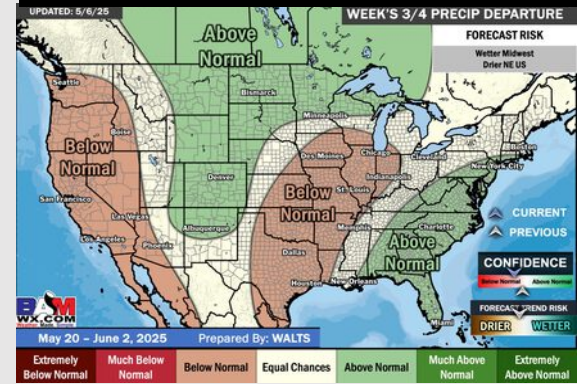
## Next 7 Day Total Precipitation



## 8-14 Day % of Average Precip.



## 15-30 Day % of Average Precip.



- Temps are expected to be below normal the next 7 days. Scattered rain showers expected throughout the week, becoming heavy at times.
- Above normal temps and below normal rainfall is favored 8 - 14 days from now.
- Below normal temperatures and below normal precipitation chances are favored for mid May.