

Houston Pilots Forecast Package



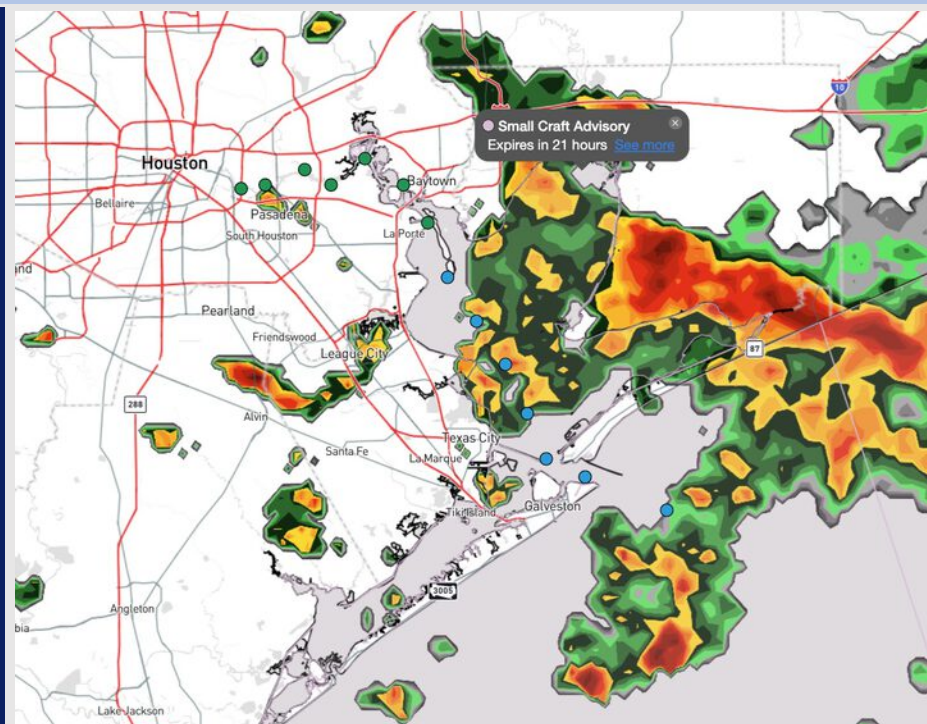
Updated: 10:00 PM CT

Monday, May 5, 2025

Forecaster: John Kemper

Weather Headlines

- Non-thunderstorm wind gusts of 20 - 30 kts possible for all stations at times over the next 48 hours.
- **Severe storms in play for all Stations on Tuesday into Wednesday. Main risks expected to be lightning, 35 – 50 kt gusts, and large hail.**
- **Zulu Port Conditions are in effect due to wave heights reaching 6' at the Boarding Station by 7AM TUE.**



Current Radar: 9:55 PM CT

As always, please do not hesitate to reach out to us with any forecast questions at (317)-560-8122. Press 1 for forecast questions.

You can also access real-time forecast updates and 24/7 meteorological chat assistance on your [Clarity](#) app. Click [here](#) for login assistance.



Houston Pilots Port Trigger Update

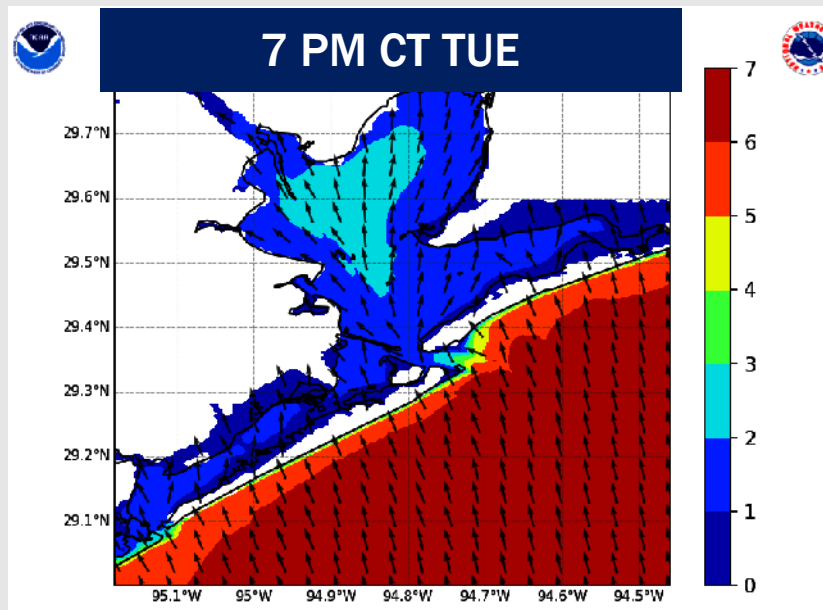
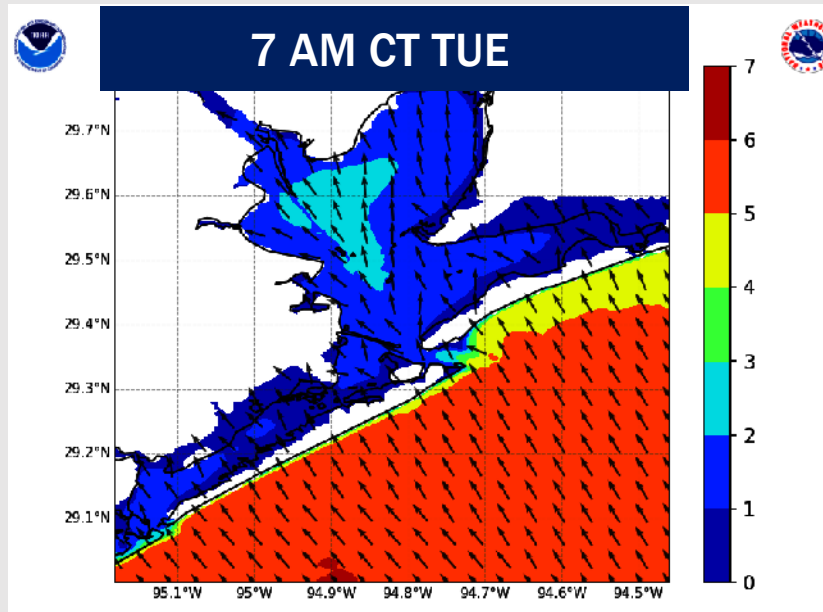
Port Condition	34 KTS+ Sustained Wind Trigger Reached at:	6 Foot Wave Trigger Reached at:	Time Remaining/Trigger Ends At:
Victor	—	—	—
Whiskey	—	—	—
X-Ray	—	—	—
Yankee	—	—	—
Zulu	—	CURRENT	4 AM WED

Port Condition	Trigger Definition	Trigger Reached?
Victor	Hurricane entering/developing in Gulf of Mexico that's a threat to the area	N/A
Whiskey	72 hours prior to predicted sustained winds of 34+ KTS	N/A
X-Ray	48 hours prior to predicted sustained winds of 34+ KTS or 6' wave height	PAST
Yankee	24 hours prior to predicted sustained winds of 34+ KTS or 6' wave height	PAST
Zulu	12 hours prior to predicted sustained winds of 34+ KTS or 6' wave height	Yes

NOTES:

Due to elevated winds and strong gusts today and Tuesday, max wave heights are expected to increase to 6' for the Boarding Station by 7AM on Tuesday. 6' wave heights are expected to persist through 4 AM Wednesday. Wave heights expected to drop below 5' after 1 PM on Wednesday.

Wave Height Forecast Update



Due to elevated winds and strong gusts Tuesday, max wave heights are expected to increase to 6' for the Boarding Station by 7 AM on Tuesday.

A few wave heights up to 7' will be possible from 12PM TUE to 12AM WED.

6' wave heights are expected to persist through 4 AM Wednesday. Wave heights expected to drop below 5' after 1 PM on Wednesday.

Houston Pilots Visibility Chart (miles)



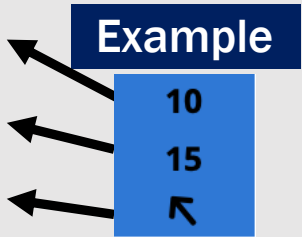
Visibility	Mon 11 pm	Tue 12 am	Tue 1 am	Tue 2 am	Tue 3 am	Tue 4 am	Tue 5 am	Tue 6 am	Tue 7 am	Tue 8 am	Tue 9 am	Tue 10 am	Tue 11 am	Tue 12 pm	Tue 1 pm	Tue 2 pm	Tue 3 pm	Tue 4 pm	Tue 5 pm	Tue 6 pm	Tue 7 pm	Tue 8 pm	Tue 9 pm	Tue 10 pm
Houston Pilots N - 610 Bridge	6.9	7.9	6.9	6.9	7.9	9	9	9	9	6.9	5.9	5.9	7.9	7.9	10	10	10	10	10	7.9	6.9	6.9	6.9	6.9
Houston Pilots M - Kinder 1	5.9	6.9	6.9	6.9	6.9	9	9	9	9	6.9	5.9	5.9	6.9	7.9	9	10	10	10	9	7.9	6.9	6.9	6.9	6.9
Houston Pilots L - Greens Bayou	5.9	5.9	6.9	6.9	6.9	7.9	9	9	9	6.9	5.9	5.9	6.9	7.9	9	10	10	10	9	6.9	6.9	6.9	6.9	6.9
Houston Pilots K - Shell Crude	5.9	5.9	6.9	5.9	6.9	7.9	7.9	9	9	6.9	5.9	5.9	6.9	7.9	9	10	9	9	9	6.9	6.9	6.9	6.9	6.9
Houston Pilots J - Lynchburg Ferries	5.9	6.9	6.9	6.9	6.9	7.9	9	9	9	6.9	5.9	5.9	6.9	7.9	9	10	10	10	9	6.9	6.9	6.9	6.9	6.9
Houston Pilots I - Exxon 3	5.9	6.9	5.9	5.9	6.9	7.9	7.9	10	9	6.9	5.9	5.9	6.9	7.9	9	9	9	9	9	6.9	6.9	6.9	6.9	6.9
Houston Pilots H - Morgans Point	4.9	6.9	5.9	4.9	6.9	7.9	7.9	10	9	6.9	5.9	5.9	6.9	7.9	9	9	9	9	7.9	6.9	6.9	6.9	6.9	6.9
Houston Pilots G - 75/76	4.9	4.9	4.9	4.9	6.9	7.9	7.9	9	7.9	6.9	5.9	5.9	6.9	7.9	9	9	6.9	4.9	3.9	3.9	3.9	3.9	1.6	5
Houston Pilots F - 63/64	4.9	3.9	4.9	4.9	6.9	7.9	7.9	9	7.9	6.9	5.9	5.9	6.9	7.9	9	9	6.9	3.9	3.9	3.9	3.9	3.9	0.7	5
Houston Pilots E - 51/52	4.9	3.9	3.9	4.9	6.9	6.9	6.9	7.9	7.9	6.9	4.9	5.9	6.9	6.9	7.9	6.9	5.9	3.9	3.9	3.9	2.9	3.9	0.7	4
Houston Pilots D - 37/38	4.9	3.9	3.9	4.9	6.9	6.9	6.9	7.9	7.9	6.9	4.9	5.9	5.9	6.9	7.9	6.9	5.9	3.9	2.9	3.9	2.9	3.9	0.7	4
Houston Pilots C - 25/26	4.9	3.9	3.9	4.9	6.9	6.9	6.9	7.9	7.9	6.9	4.9	4.9	5.9	6.9	6.9	6.9	4.9	3.9	2.9	3.9	2.9	3.9	1.6	4
Houston Pilots B - 11/12	4.9	3.9	3.9	4.9	6.9	6.9	6.9	6.9	6.9	6.9	4.9	4.9	4.9	6.9	6.9	6.9	4.9	3.9	2.9	2.9	2.9	2.9	4	4
Houston Pilots A - 1 & 2 Bravo	4.9	3.9	3.9	3.9	4.9	4.9	5.9	6.9	6.9	4.9	3.9	3.9	4.9	4.9	4.9	3.9	3.9	2.9	2.9	2.9	2.9	2.9	8	7

NOTE: This is automated data that may/may not agree with the official BAM thinking that's found on the daily slides or special visibility report slides. This data should be used as a guide only

Houston Pilots Wind Chart



Sustained Wind 10 Knots
Gusts 15 Knots
Wind from the SE



Wind	Mon 11 pm	Tue 12 am	Tue 1 am	Tue 2 am	Tue 3 am	Tue 4 am	Tue 5 am	Tue 6 am	Tue 7 am	Tue 8 am	Tue 9 am	Tue 10 am	Tue 11 am	Tue 12 pm	Tue 1 pm	Tue 2 pm	Tue 3 pm	Tue 4 pm	Tue 5 pm	Tue 6 pm	Tue 7 pm	Tue 8 pm	Tue 9 pm	Tue 10 pm
Houston Pilots N - 610 Bridge	12 25 ↖	12 24 ↖	10 23 ↖	10 22 ↖	10 22 ↖	10 22 ↖	10 22 ↖	10 23 ↖	10 23 ↖	10 23 ↖	13 25 ↖	14 26 ↖	15 29 ↖	16 32 ↖	16 32 ↖	16 33 ↖	16 32 ↖	15 31 ↖	14 30 ↖	13 28 ↖	13 25 ↖	10 23 ↖	10 20 ↖	8 18 ↖
Houston Pilots M - Kinder 1	12 25 ↖	12 24 ↖	10 23 ↖	10 22 ↖	10 22 ↖	10 22 ↖	10 22 ↖	10 23 ↖	10 23 ↖	10 23 ↖	13 25 ↖	14 26 ↖	15 29 ↖	15 32 ↖	16 32 ↖	16 32 ↖	16 32 ↖	15 31 ↖	14 29 ↖	13 28 ↖	13 25 ↖	10 23 ↖	10 20 ↖	8 18 ↖
Houston Pilots L - Greens Bayou	12 24 ↖	12 24 ↖	10 23 ↖	10 22 ↖	10 22 ↖	10 22 ↖	10 22 ↖	10 23 ↖	10 23 ↖	10 23 ↖	12 25 ↖	13 26 ↖	14 29 ↖	15 31 ↖	16 32 ↖	16 31 ↖	16 31 ↖	15 30 ↖	14 29 ↖	14 28 ↖	13 25 ↖	10 22 ↖	10 20 ↖	8 18 ↖
Houston Pilots K - Shell Crude	13 25 ↖	12 24 ↖	12 23 ↖	10 22 ↖	10 23 ↖	10 23 ↖	10 23 ↖	10 23 ↖	12 24 ↖	12 24 ↖	13 26 ↖	14 26 ↖	15 29 ↖	16 31 ↖	16 32 ↖	16 31 ↖	16 31 ↖	15 30 ↖	15 29 ↖	14 26 ↖	13 25 ↖	10 23 ↖	10 21 ↖	9 18 ↖
Houston Pilots J - Lynchburg Ferries	12 24 ↖	12 23 ↖	10 22 ↖	10 22 ↖	10 22 ↖	10 22 ↖	10 22 ↖	10 23 ↖	10 23 ↖	12 23 ↖	13 25 ↖	14 26 ↖	15 29 ↖	16 31 ↖	17 32 ↖	17 31 ↖	16 31 ↖	15 30 ↖	15 29 ↖	14 28 ↖	13 25 ↖	10 23 ↖	10 21 ↖	9 18 ↖
Houston Pilots I - Exxon 3	17 25 ↖	17 25 ↖	17 25 ↖	16 24 ↖	16 24 ↖	16 24 ↖	16 24 ↖	16 24 ↖	17 25 ↖	17 25 ↖	17 26 ↖	18 26 ↖	20 28 ↖	20 30 ↖	20 31 ↖	18 31 ↖	18 30 ↖	17 30 ↖	17 29 ↖	17 28 ↖	16 26 ↖	15 23 ↖	14 22 ↖	13 21 ↖
Houston Pilots H - Morgans Point	17 26 ↖	17 26 ↖	17 26 ↖	17 24 ↖	17 25 ↖	17 25 ↖	17 24 ↖	17 25 ↖	17 25 ↖	17 25 ↖	18 26 ↖	18 28 ↖	20 29 ↖	20 30 ↖	20 31 ↖	18 30 ↖	18 30 ↖	18 30 ↖	17 29 ↖	17 28 ↖	16 26 ↖	15 24 ↖	15 22 ↖	14 21 ↖
Houston Pilots G - 75/76	21 29 ↖	21 30 ↖	20 29 ↖	20 28 ↖	20 28 ↖	20 28 ↖	20 28 ↖	20 28 ↖	20 28 ↖	20 28 ↖	21 29 ↖	21 30 ↖	21 31 ↖	21 32 ↖	21 32 ↖	20 31 ↖	20 32 ↖	20 32 ↖	20 31 ↖	18 30 ↖	17 28 ↖	17 25 ↖	16 24 ↖	15 22 ↖
Houston Pilots F - 63/64	21 29 ↖	21 29 ↖	21 29 ↖	20 28 ↖	20 28 ↖	20 28 ↖	20 28 ↖	20 28 ↖	20 28 ↖	20 28 ↖	21 29 ↖	22 30 ↖	22 31 ↖	22 32 ↖	21 32 ↖	21 32 ↖	21 32 ↖	20 32 ↖	20 31 ↖	18 30 ↖	17 28 ↖	17 25 ↖	16 24 ↖	15 23 ↖
Houston Pilots E - 51/52	21 29 ↖	21 30 ↖	21 29 ↖	20 28 ↖	20 29 ↖	20 29 ↖	20 28 ↖	21 28 ↖	21 29 ↖	21 28 ↖	21 30 ↖	22 31 ↖	22 31 ↖	22 32 ↖	21 32 ↖	21 32 ↖	21 32 ↖	20 32 ↖	20 31 ↖	20 30 ↖	18 28 ↖	17 25 ↖	17 24 ↖	16 23 ↖
Houston Pilots D - 37/38	21 29 ↖	21 30 ↖	21 29 ↖	20 28 ↖	20 29 ↖	20 29 ↖	20 29 ↖	20 28 ↖	21 29 ↖	21 29 ↖	21 30 ↖	22 31 ↖	22 32 ↖	22 32 ↖	22 32 ↖	21 32 ↖	21 32 ↖	21 32 ↖	20 31 ↖	20 30 ↖	17 28 ↖	17 25 ↖	17 24 ↖	16 23 ↖
Houston Pilots C - 25/26	20 ↖	21 ↖	20 ↖	20 ↖	20 ↖	20 ↖	20 ↖	20 ↖	20 ↖	20 ↖	21 ↖	22 ↖	22 ↖	22 ↖	22 ↖	21 ↖	21 ↖	21 ↖	20 ↖	20 ↖	17 ↖	17 ↖	16 ↖	16 ↖
Houston Pilots B - 11/12	20 ↖	20 ↖	18 ↖	18 ↖	18 ↖	18 ↖	18 ↖	18 ↖	18 ↖	18 ↖	20 ↖	20 ↖	21 ↖	21 ↖	21 ↖	20 ↖	20 ↖	20 ↖	20 ↖	18 ↖	17 ↖	16 ↖	15 ↖	15 ↖
Houston Pilots A - 1 & 2 Bravo	21 ↖	22 ↖	21 ↖	21 ↖	21 ↖	21 ↖	20 ↖	21 ↖	21 ↖	21 ↖	22 ↖	22 ↖	22 ↖	22 ↖	22 ↖	22 ↖	22 ↖	22 ↖	21 ↖	20 ↖	20 ↖	18 ↖	18 ↖	17 ↖

NOTE: This is automated data that may/may not agree with the official BAM thinking that's found on the daily slides.
This data should be used as a guide only.

Houston Pilots: TUE. 5/6/2025

Forecast Discussion

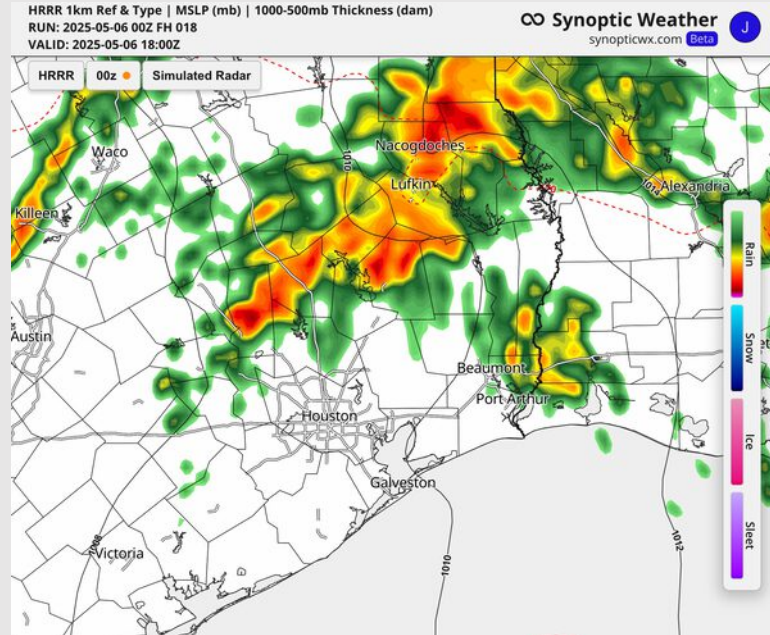
Precip: Scattered (30%) showers and a few storms will be in play from 12AM – 10AM before a brief dry gap occurs. **A few storm related gusts of up to 35kts can't be ruled out S of Morgan's Point.** Storm chances (40%) will resume after 2PM, with some able to become strong to severe after 2 PM. Main risks will be lightning, large hail, wind gusts of 35 – 50 kts, and an isolated tornado. These chances will continue through 10PM.

Wind: Winds will be out of the SE throughout the day. **N of Morgan's Point:** Winds will be at 4 – 9 kts through much of the day, increasing to 10 – 15 kts between 9AM and 7PM. **S of Morgan's Point:** Winds will be at 17 - 22 kts throughout the day. **Non-thunderstorm wind gusts of 25 – 30 kts in play for all Stations throughout the day.** Gusts increase to 30 – 35 kts for all Stations between 10 AM – 5 PM.

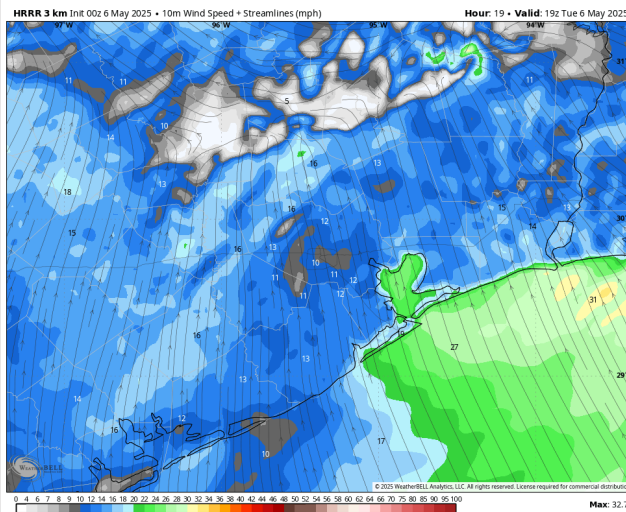
High Temps: **N of Morgan's Point:** Low 80s F. **S of Morgan's Point:** Near 80 F.

Visibility: No fog concerns for today, however visibilities can be reduced under heavy downpours.

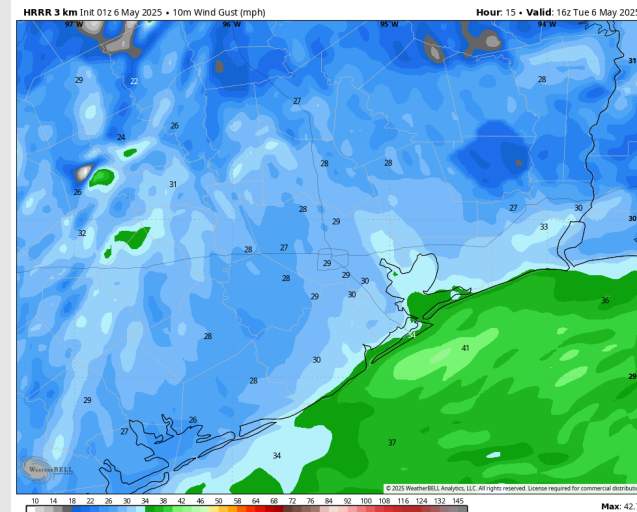
Precip Image: 1 PM CT



Wind Speed
2 PM CT



PEAK Wind
Gusts



Houston Pilots: WED. 5/7/2025

Forecast Discussion

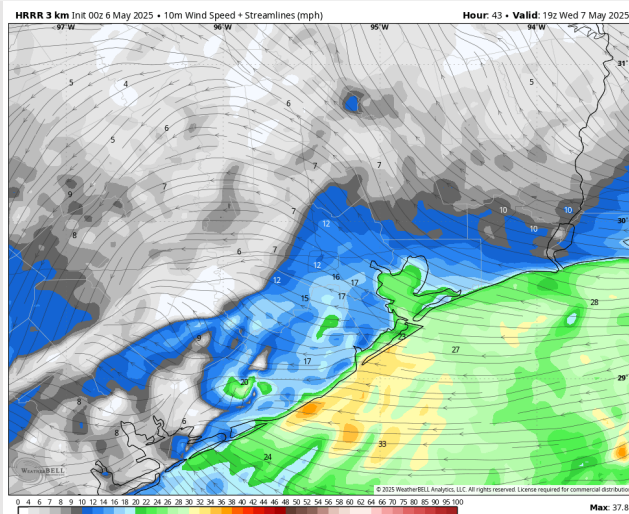
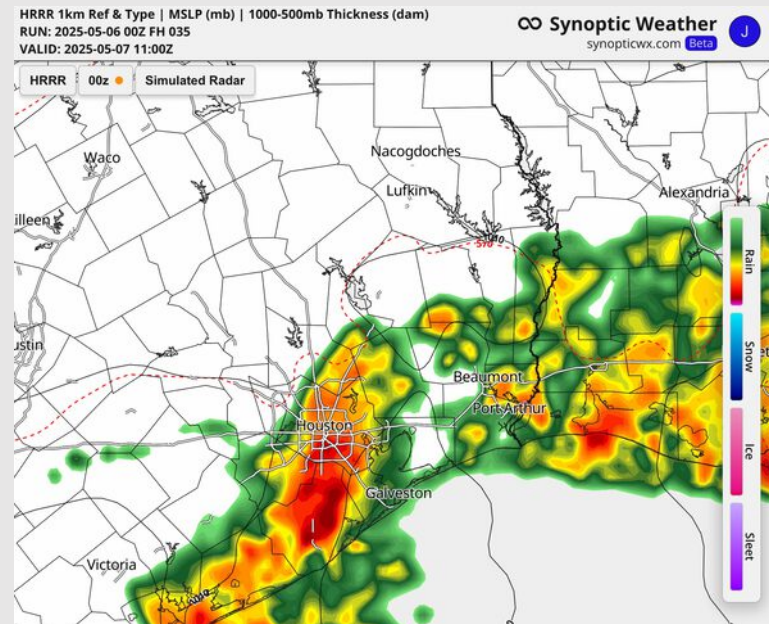
Precip: A wave of widespread heavy rain and thunderstorms is expected to move through the area between 3AM – 9AM (80%). **A few storms embedded in the main line can contain gusts of 40-45 kts.** Dry conditions are favored between 9AM – 6PM, before scattered downpours / storms chances return (30%).

Wind: Winds will settle out of the SE shortly after midnight and remain there through 10AM before veering more out of the ESE. **N of Morgan's Point:** Winds will be at 4 – 9 kts throughout the day. **S of Morgan's Point:** Winds will be at 15 – 20 kts through 1 PM, decreasing to 5 – 10 kts after that time. **Wind gusts of 20 – 25 kts in play for Stations S of Morgan's Point through 12PM.**

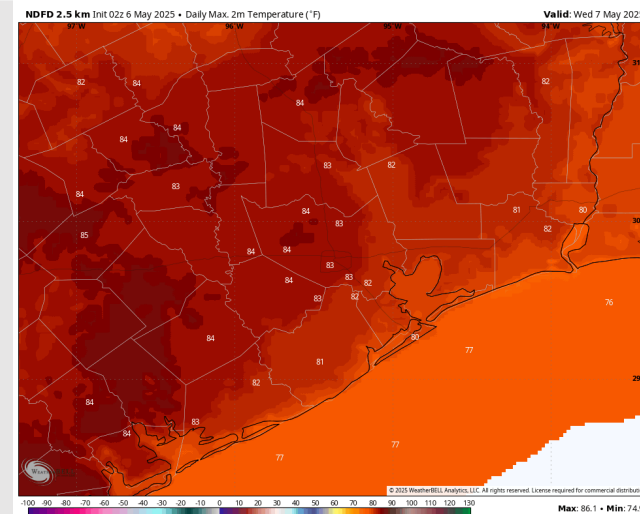
High Temps: **N of Morgan's Point:** Low 80s F. **S of Morgan's Point:** Near 80 F.

Visibility: No fog concerns for Wednesday, however visibilities may be reduced under heavy downpours.

Precip Image: 6 AM CT



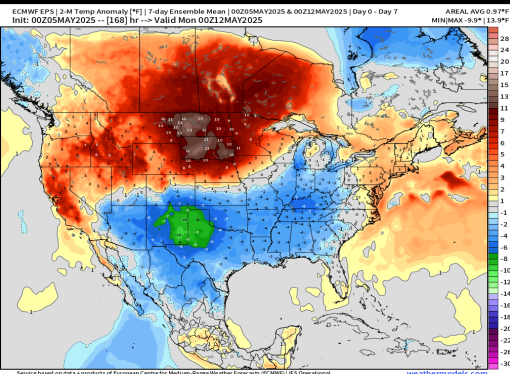
Wind Speed:
2 PM CT



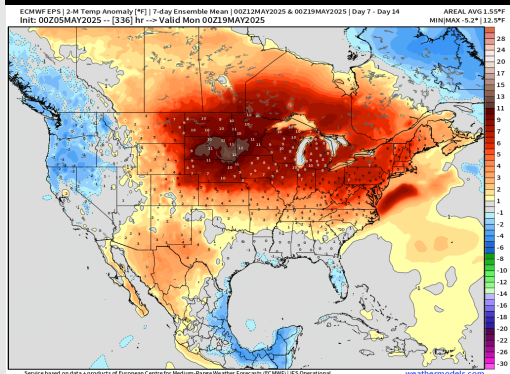
High Temps
Wednesday

Houston Pilots: 5/6/25

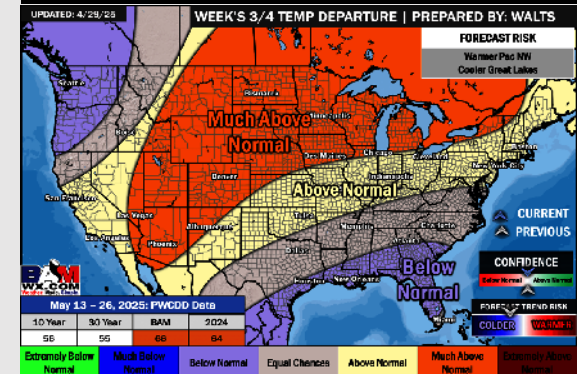
Next 7 Day Temperature Departure



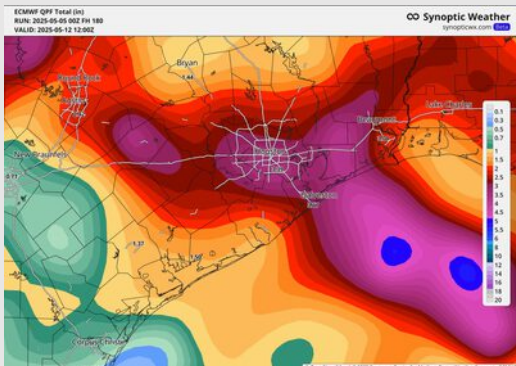
8-14 Day Temperature Departure



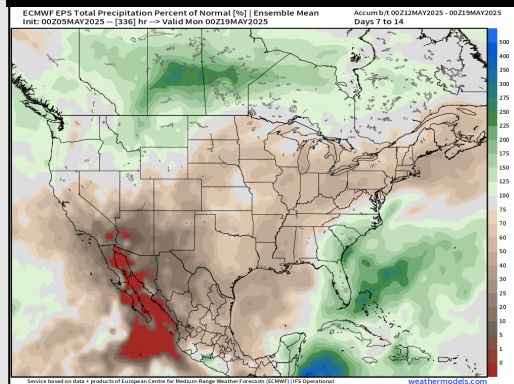
15-30 Day Temperature Departure



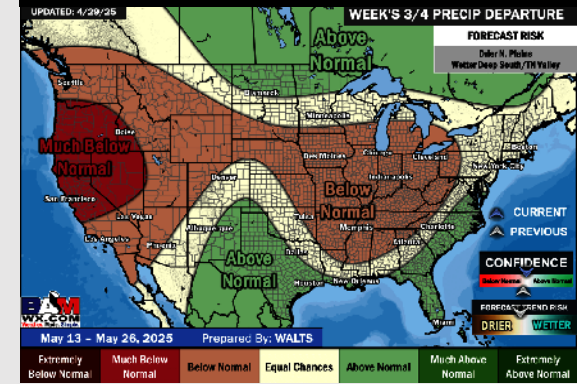
Next 7 Day Total Precipitation



8-14 Day % of Average Precip.



15-30 Day % of Average Precip.



- Temps are expected to be below normal the next 7 days. Scattered rain showers expected throughout the week, becoming heavy at times.
- Near normal temps and below normal rainfall is favored 8 - 14 days from now.
- Below normal temperatures and above normal precipitation chances are favored for mid May.