

Houston Pilots Forecast Package



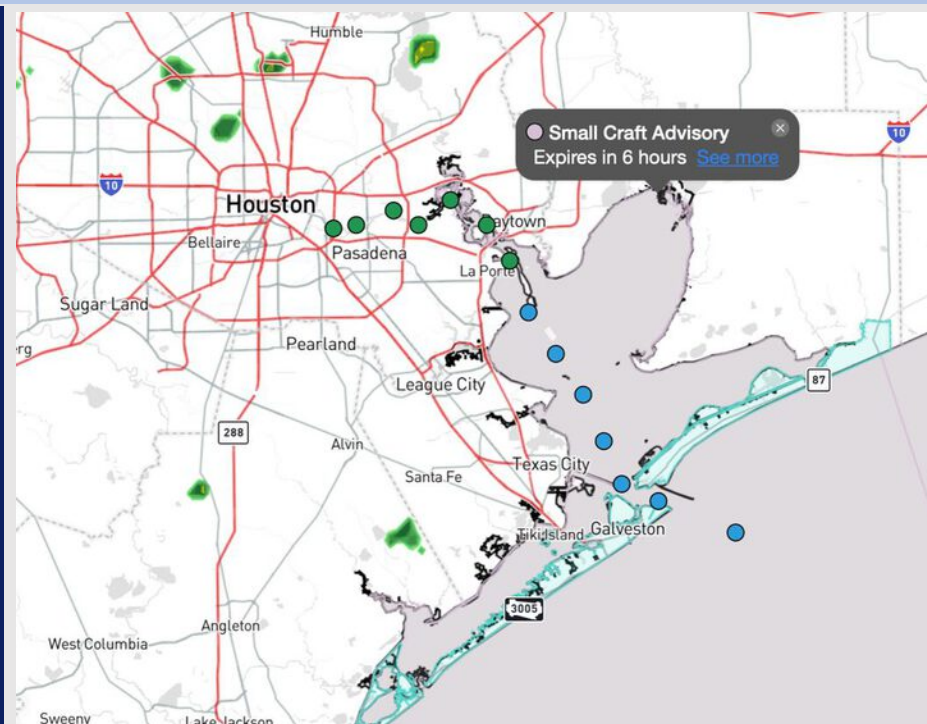
Updated: 12:40 PM CT

Wednesday, April 30, 2025

Forecaster: Hope Kleitsch

Weather Headlines

- Isolated showers possible today, with storms entering the area THU AM.
- **Gusts of 20 - 30 kts will be possible for all stations through FRI PM.**
- Expect wave heights reaching 3-5' for the Boarding Station through Thursday PM.



Current Radar: 12:35 PM CT

As always, please do not hesitate to reach out to us with any forecast questions at **(317)-560-8122**. **Press 1 for forecast questions.**

You can also access real-time forecast updates and 24/7 meteorological chat assistance on your **Clarity** app. Click [here](#) for login assistance.



Houston Pilots Visibility Chart (miles)



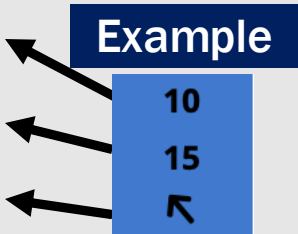
Visibility	Wed 2 pm	Wed 3 pm	Wed 4 pm	Wed 5 pm	Wed 6 pm	Wed 7 pm	Wed 8 pm	Wed 9 pm	Wed 10 pm	Wed 11 pm	Thu 12 am	Thu 1 am	Thu 2 am	Thu 3 am	Thu 4 am	Thu 5 am	Thu 6 am	Thu 7 am	Thu 8 am	Thu 9 am	Thu 10 am	Thu 11 am	Thu 12 pm	Thu 1 pm
Houston Pilots N - 610 Bridge	10	10	10	10	10	10	10	10	10	10	10	10	10	10	10	10	10	10	7.9	7.9	10	10	10	10
Houston Pilots M - Kinder 1	10	10	10	10	10	10	10	10	10	10	10	10	10	10	10	10	10	10	7.9	7.9	10	10	10	10
Houston Pilots L - Greens Bayou	10	10	10	10	10	10	10	10	10	10	10	10	10	10	10	10	10	10	7.9	7.9	10	10	10	10
Houston Pilots K - Shell Crude	10	10	10	10	10	10	10	10	10	10	10	10	10	10	10	10	10	10	7.9	7.9	10	10	10	10
Houston Pilots J - Lynchburg Ferries	10	10	10	10	10	10	10	10	10	10	10	10	10	10	10	10	10	10	7.9	7.9	10	10	10	10
Houston Pilots I - Exxon 3	10	10	10	10	10	10	10	10	10	10	10	10	10	10	10	10	10	10	6.9	7.9	10	10	10	10
Houston Pilots H - Morgans Point	10	10	10	10	10	10	10	10	10	10	10	10	10	10	10	10	10	10	7.9	7.9	10	10	10	10
Houston Pilots G - 75/76	10	10	9	8	9	10	10	10	10	9	9	7.9	7.9	6.9	7.9	7.9	7.9	6.9	6.9	5.9	6.9	9	10	10
Houston Pilots F - 63/64	10	10	9	8	9	10	10	10	10	9	9	7.9	7.9	6.9	7.9	7.9	7.9	6.9	6.9	5.9	6.9	7.9	10	10
Houston Pilots E - 51/52	9	8	6.9	6.9	6.9	7.9	7.9	7.9	9	7.9	7.9	7.9	7.9	6.9	7.9	7.9	7.9	6.9	5.9	4.9	5.9	6.9	10	10
Houston Pilots D - 37/38	9	8	6.9	6.9	6.9	7.9	7.9	7.9	9	7.9	7.9	7.9	7.9	6.9	7.9	7.9	7.9	6.9	5.9	4.9	5.9	6.9	10	10
Houston Pilots C - 25/26	9	8	6.9	6.9	6.9	7.9	7.9	7.9	9	7.9	7.9	7.9	7.9	6.9	7.9	7.9	7.9	7.9	5.9	4.9	5.9	6.9	10	10
Houston Pilots B - 11/12	7.9	6.9	6.9	6.9	6.9	6.9	6.9	6.9	9	7.9	7.9	6.9	7.9	6.9	7.9	7.9	7.9	7.9	5.9	4.9	5.9	6.9	10	10
Houston Pilots A - 1 & 2 Bravo	6.9	6.9	5.9	5.9	5.9	6.9	6.9	6.9	6.9	6.9	6.9	6.9	6.9	6.9	6.9	6.9	6.9	6.9	5.9	4.9	4.9	6.9	10	10

NOTE: This is automated data that may/may not agree with the official BAM thinking that's found on the daily slides or special visibility report slides. This data should be used as a guide only

Houston Pilots Wind Chart



Sustained Wind 10 Knots
Gusts 15 Knots
Wind from the SE



Wind	Wed 2 pm	Wed 3 pm	Wed 4 pm	Wed 5 pm	Wed 6 pm	Wed 7 pm	Wed 8 pm	Wed 9 pm	Wed 10 pm	Wed 11 pm	Thu 12 am	Thu 1 am	Thu 2 am	Thu 3 am	Thu 4 am	Thu 5 am	Thu 6 am	Thu 7 am	Thu 8 am	Thu 9 am	Thu 10 am	Thu 11 am	Thu 12 pm	Thu 1 pm
Houston Pilots N - 610 Bridge	15 32 ↑	16 33 ↑	16 33 ↑	16 33 ↑	16 33 ↑	16 32 ↑	15 29 ↑	14 29 ↑	13 26 ↑	13 26 ↑	13 24 ↑	12 24 ↑	10 23 ↑	10 22 ↑	9 20 ↑	8 18 ↑	8 16 ↑	7 15 ↑	6 14 ↑	7 15 ↑	8 16 ↑	9 17 ↑	10 20 ↑	10 21 ↑
Houston Pilots M - Kinder 1	15 31 ↑	16 33 ↑	16 33 ↑	17 33 ↑	16 33 ↑	16 32 ↑	16 29 ↑	14 29 ↑	13 26 ↑	13 26 ↑	13 24 ↑	12 24 ↑	10 23 ↑	10 22 ↑	9 20 ↑	8 18 ↑	8 16 ↑	7 15 ↑	6 14 ↑	7 15 ↑	8 16 ↑	9 17 ↑	10 20 ↑	10 21 ↑
Houston Pilots L - Greens Bayou	16 31 ↑	16 32 ↑	17 32 ↑	17 32 ↑	17 32 ↑	16 31 ↑	16 29 ↑	15 28 ↑	14 26 ↑	13 26 ↑	13 24 ↑	12 24 ↑	10 23 ↑	10 22 ↑	9 20 ↑	8 18 ↑	8 16 ↑	7 15 ↑	6 14 ↑	7 15 ↑	8 16 ↑	9 17 ↑	10 20 ↑	10 21 ↑
Houston Pilots K - Shell Crude	16 30 ↑	16 31 ↑	16 32 ↑	16 31 ↑	16 32 ↑	16 31 ↑	15 28 ↑	14 28 ↑	13 26 ↑	13 26 ↑	13 24 ↑	12 24 ↑	10 23 ↑	10 22 ↑	9 20 ↑	8 18 ↑	8 16 ↑	7 15 ↑	6 14 ↑	7 15 ↑	8 16 ↑	9 17 ↑	10 20 ↑	10 21 ↑
Houston Pilots J - Lynchburg Ferries	16 30 ↑	17 31 ↑	17 32 ↑	17 32 ↑	17 32 ↑	16 31 ↑	16 28 ↑	14 28 ↑	13 26 ↑	13 25 ↑	13 24 ↑	12 24 ↑	10 23 ↑	10 21 ↑	9 20 ↑	8 18 ↑	8 16 ↑	7 15 ↑	6 14 ↑	7 15 ↑	8 16 ↑	9 17 ↑	10 20 ↑	10 21 ↑
Houston Pilots I - Exxon 3	17 30 ↑	18 31 ↑	18 31 ↑	18 31 ↑	20 31 ↑	20 30 ↑	18 28 ↑	18 28 ↑	18 26 ↑	17 26 ↑	17 25 ↑	17 24 ↑	16 23 ↑	15 22 ↑	15 20 ↑	13 20 ↑	13 18 ↑	10 16 ↑	10 16 ↑	10 16 ↑	12 17 ↑	12 18 ↑	13 20 ↑	13 21 ↑
Houston Pilots H - Morgans Point	17 29 ↑	18 30 ↑	18 31 ↑	20 31 ↑	20 31 ↑	20 30 ↑	18 28 ↑	18 28 ↑	18 26 ↑	17 26 ↑	17 25 ↑	17 24 ↑	17 23 ↑	16 22 ↑	15 21 ↑	13 21 ↑	13 18 ↑	10 17 ↑	10 16 ↑	10 17 ↑	12 17 ↑	12 18 ↑	13 20 ↑	13 21 ↑
Houston Pilots G - 75/76	18 30 ↑	20 31 ↑	20 32 ↑	20 32 ↑	21 32 ↑	21 32 ↑	20 30 ↑	20 29 ↑	20 29 ↑	20 29 ↑	20 29 ↑	20 28 ↑	20 26 ↑	18 25 ↑	17 24 ↑	16 23 ↑	15 22 ↑	13 20 ↑	13 17 ↑	13 18 ↑	13 18 ↑	14 20 ↑	14 22 ↑	14 23 ↑
Houston Pilots F - 63/64	20 30 ↑	20 31 ↑	20 32 ↑	21 32 ↑	21 32 ↑	21 31 ↑	20 29 ↑	20 29 ↑	20 28 ↑	20 28 ↑	20 28 ↑	20 28 ↑	20 26 ↑	18 25 ↑	17 24 ↑	16 23 ↑	15 22 ↑	14 20 ↑	13 18 ↑	13 18 ↑	13 20 ↑	14 21 ↑	15 22 ↑	15 23 ↑
Houston Pilots E - 51/52	20 30 ↑	20 31 ↑	20 31 ↑	21 31 ↑	20 31 ↑	20 30 ↑	20 29 ↑	20 29 ↑	20 28 ↑	20 28 ↑	21 29 ↑	20 28 ↑	20 26 ↑	20 26 ↑	18 24 ↑	17 24 ↑	16 23 ↑	15 21 ↑	13 18 ↑	14 20 ↑	14 20 ↑	15 21 ↑	15 22 ↑	15 24 ↑
Houston Pilots D - 37/38	20 30 ↑	20 31 ↑	20 31 ↑	21 31 ↑	20 31 ↑	20 30 ↑	20 29 ↑	20 28 ↑	20 28 ↑	20 28 ↑	21 29 ↑	20 28 ↑	20 26 ↑	20 25 ↑	18 24 ↑	17 24 ↑	16 23 ↑	15 21 ↑	14 20 ↑	14 20 ↑	14 21 ↑	15 21 ↑	15 22 ↑	15 24 ↑
Houston Pilots C - 25/26	20 30 ↑	20 30 ↑	21 30 ↑	21 30 ↑	21 30 ↑	20 30 ↑	18 28 ↑	20 29 ↑	20 28 ↑	20 28 ↑	20 28 ↑	20 28 ↑	20 26 ↑	20 25 ↑	18 24 ↑	17 24 ↑	16 23 ↑	15 22 ↑	14 20 ↑	14 20 ↑	14 21 ↑	15 21 ↑	15 22 ↑	15 23 ↑
Houston Pilots B - 11/12	18 28 ↑	20 29 ↑	20 29 ↑	20 29 ↑	20 29 ↑	18 28 ↑	17 26 ↑	17 26 ↑	18 26 ↑	18 26 ↑	18 26 ↑	18 26 ↑	17 25 ↑	17 25 ↑	17 24 ↑	16 24 ↑	15 23 ↑	14 21 ↑	13 20 ↑	13 20 ↑	13 20 ↑	14 21 ↑	15 21 ↑	15 22 ↑
Houston Pilots A - 1 & 2 Bravo	20 29 ↑	20 29 ↑	21 30 ↑	21 30 ↑	20 29 ↑	20 29 ↑	20 28 ↑	20 29 ↑	20 28 ↑	20 28 ↑	21 29 ↑	20 28 ↑	20 28 ↑	20 28 ↑	20 26 ↑	18 25 ↑	17 24 ↑	16 23 ↑	15 22 ↑	15 21 ↑	15 21 ↑	15 21 ↑	15 22 ↑	15 22 ↑

NOTE: This is automated data that may/may not agree with the official BAM thinking that's found on the daily slides.
This data should be used as a guide only.

Houston Pilots: WED. 4/30/2025

Forecast Discussion

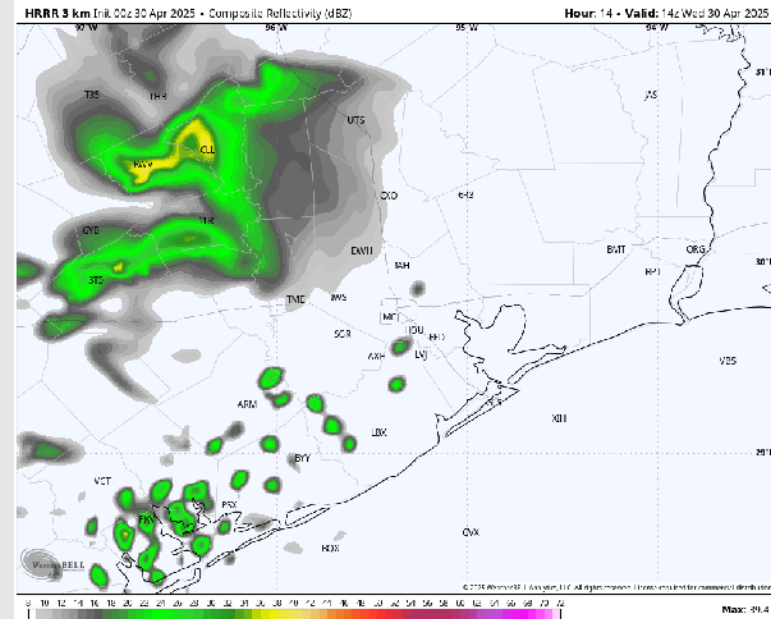
Precip: Isolated showers (20%) will be possible through 7PM for all Stations.

Wind: Winds will be out of the SE/SSE throughout today. **N of Morgan's Point:** Winds will be at 8 – 15 kts for the rest of the day. **S of Morgan's Point:** Winds will be at 15 – 20 kts throughout the day. Wind gusts of 20 – 25 kts will be possible for all Stations throughout the day. A few gusts up to 30 kts will be possible through 6PM.

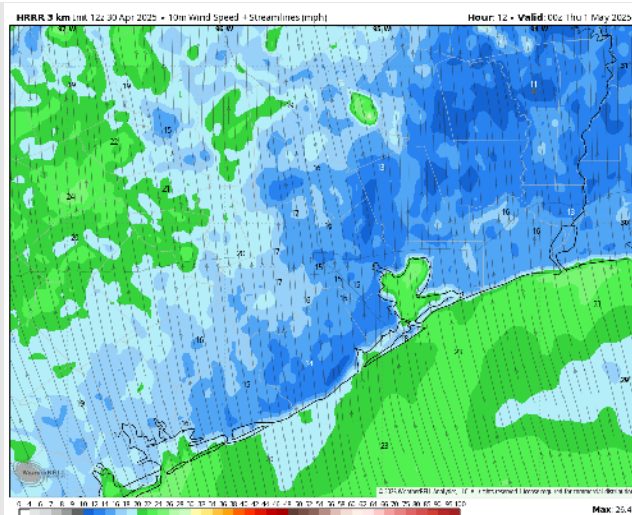
Low Temps: **N of Morgan's Point:** Near 70 F. **S of Morgan's Point:** Low 70s F.

Visibility: No visibility concerns for the rest of today.

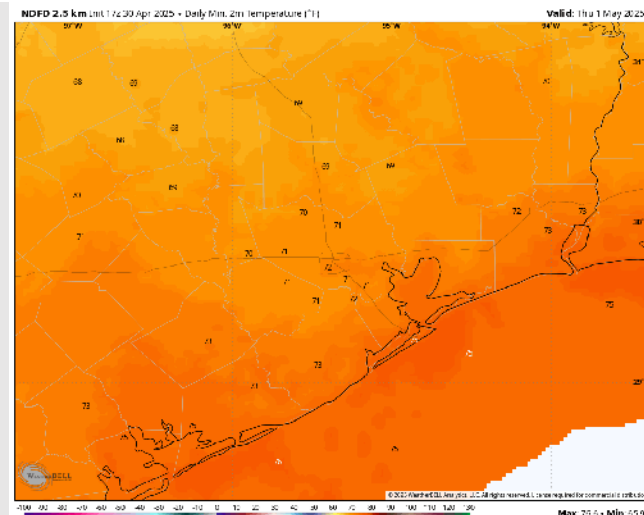
Precip Image: 9 AM CT



Wind Speed
7 PM CT



Low Temps
THU AM



Houston Pilots: THU. 5/1/2025

Forecast Discussion

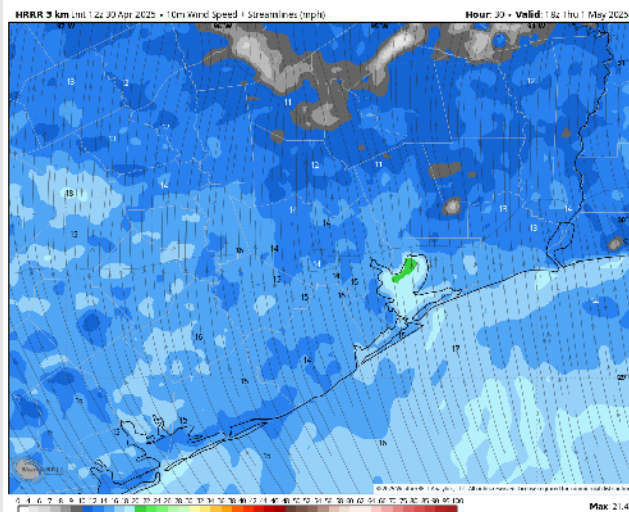
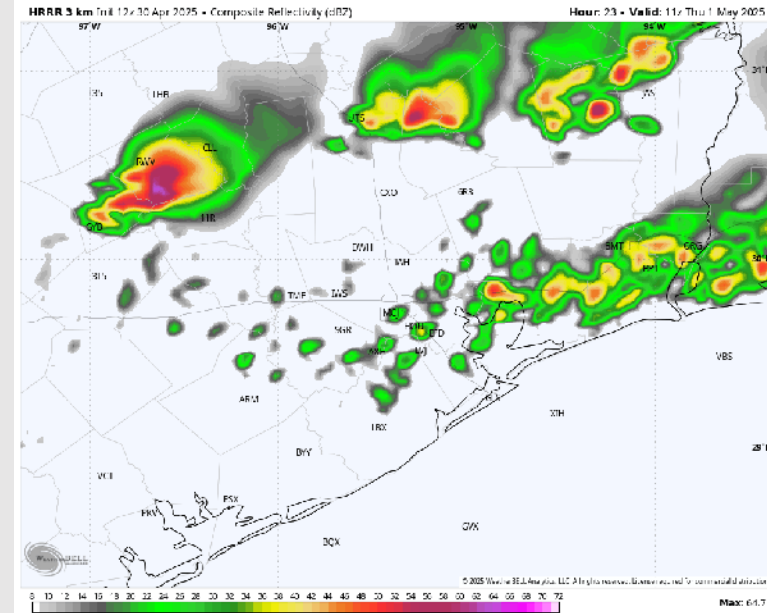
Precip: Lower confidence on coverage currently, but we are favoring a broken line of storms to impact stations from 5– 10AM (50%). We'll need to watch for additional thunderstorms to develop after 4PM (30%).
Lightning, wind gusts of 30-40 kts, and small hail will be possible within storms.

Wind: Winds will be out of the S/SSE through all of Thursday. **N of Morgan's Point:** Winds will be at 7 – 11 kts for all of Thursday. **S of Morgan's Point:** Winds will be at 11 – 16 kts throughout the day. **Wind gusts of 20 – 25 kts will be possible for all Stations throughout the day.**

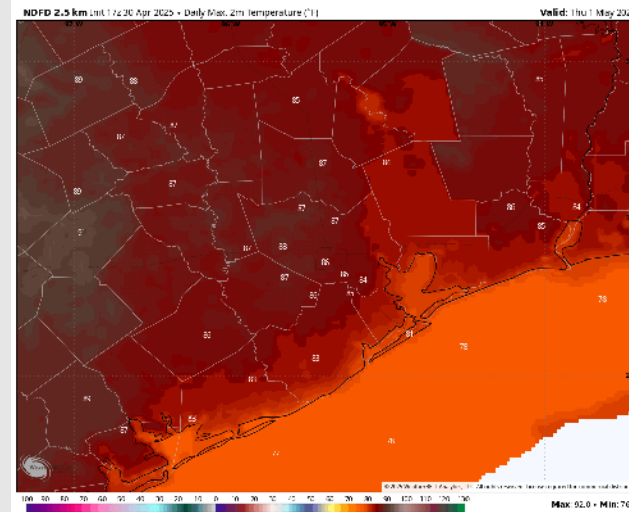
High Temps: **N of Morgan's Point:** Mid 80s F. **S of Morgan's Point:** Near 80 F.

Visibility: No visibility concerns for Thursday.

Precip Image: 6 AM CT



Wind Speed:
1 PM CT



High Temps
Thursday

Houston Pilots: FRI. 5/2/2025

Forecast Discussion

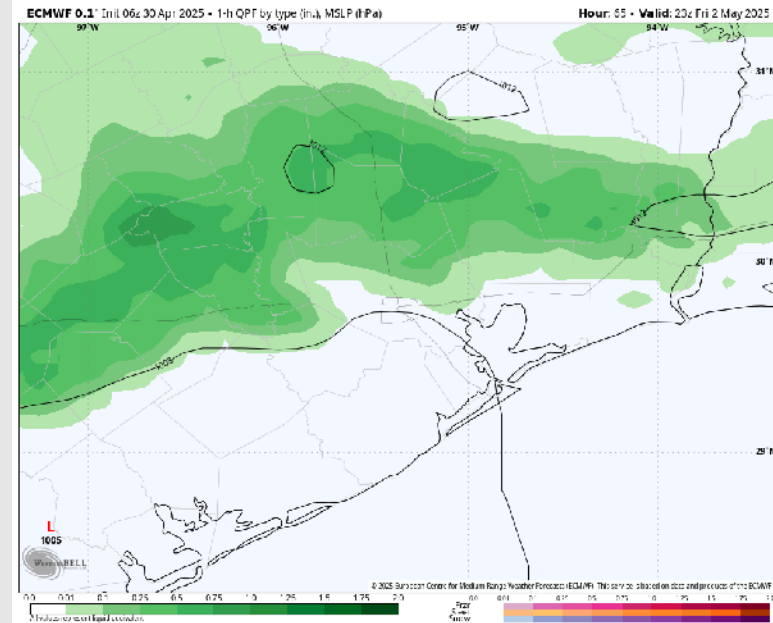
Precip: Scattered showers will be possible after 12PM (30%) for all stations. Widespread showers and storms will need to be monitored after 7PM. **Lightning, wind gusts of 30-40 kts, and small hail will be possible within storms.**

Wind: Winds will be out of the S through 7PM before becoming variable for the remainder of Friday as the front “sits” across the bay. **N of Morgan’s Point:** Winds will be at 5 – 10 kts throughout Friday. **S of Morgan’s Point:** Winds will be at 13 – 18 kts for all of Friday. **Non-Storm wind gusts up to 25 kts will be possible for all Stations for all of Friday.**

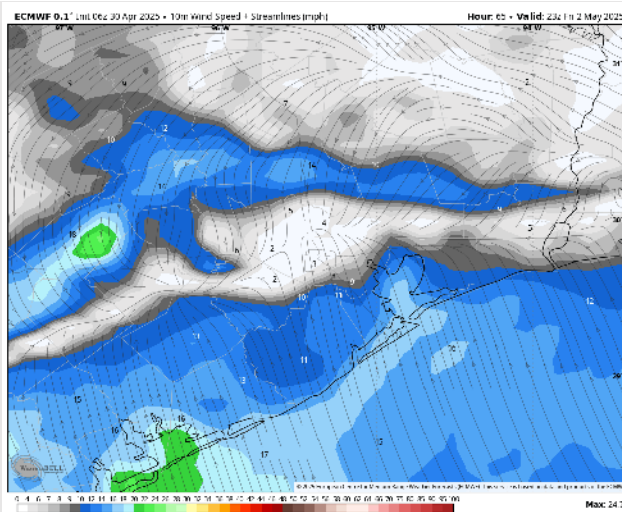
High Temps: **N of Morgan’s Point:** Mid 80s F. **S of Morgan’s Point:** Low 80s F.

Visibility: Reduced visibilities will be possible within any storms.

Precip Image: 6 PM CT

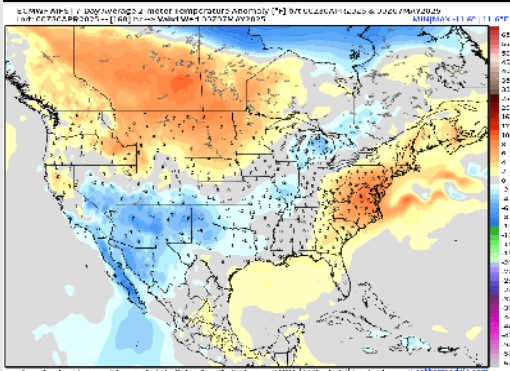


Wind Speed:
6 PM CT

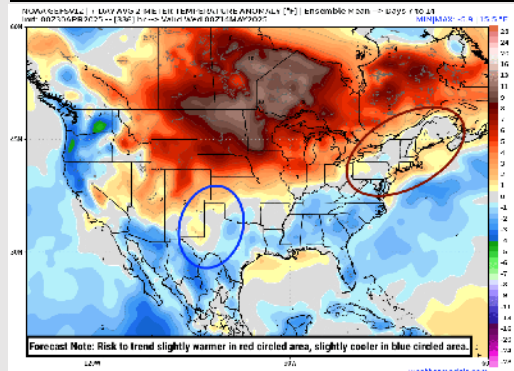


Houston Pilots: 4/30/25

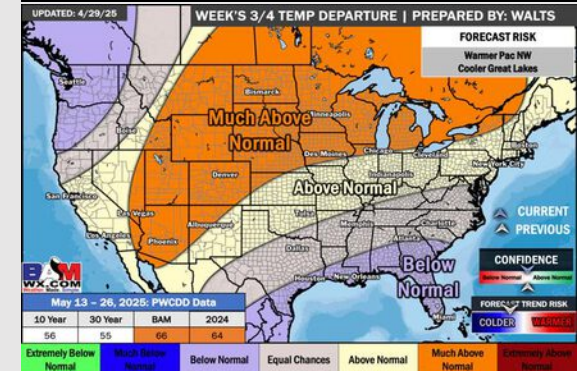
Next 7 Day Temperature Departure



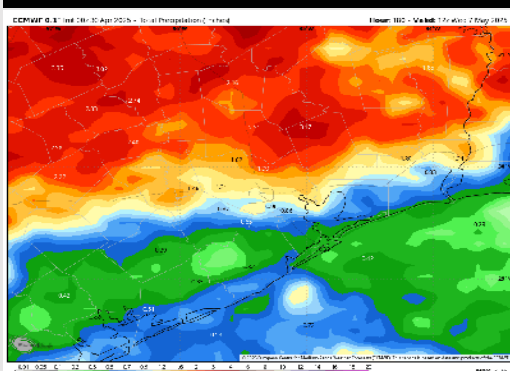
8-14 Day Temperature Departure



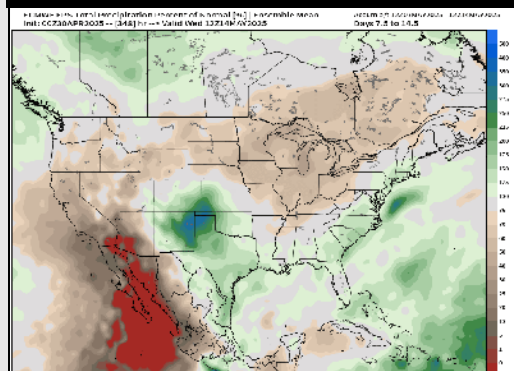
15-30 Day Temperature Departure



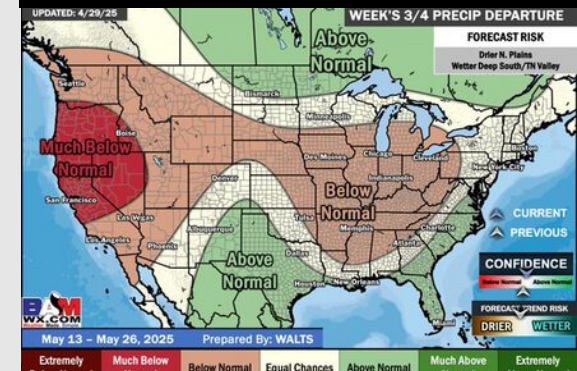
Next 7 Day Total Precipitation



8-14 Day % of Average Precip.



15-30 Day % of Average Precip.



- Temps are expected to be near normal the next 7 days. Scattered rain showers expected throughout the week with heaviest rain over the weekend.
- Near normal temps and well above normal rainfall is favored 8 - 14 days from now.
- Below normal temperatures and above normal precipitation chances are favored for mid May.