

Houston Pilots Forecast Package

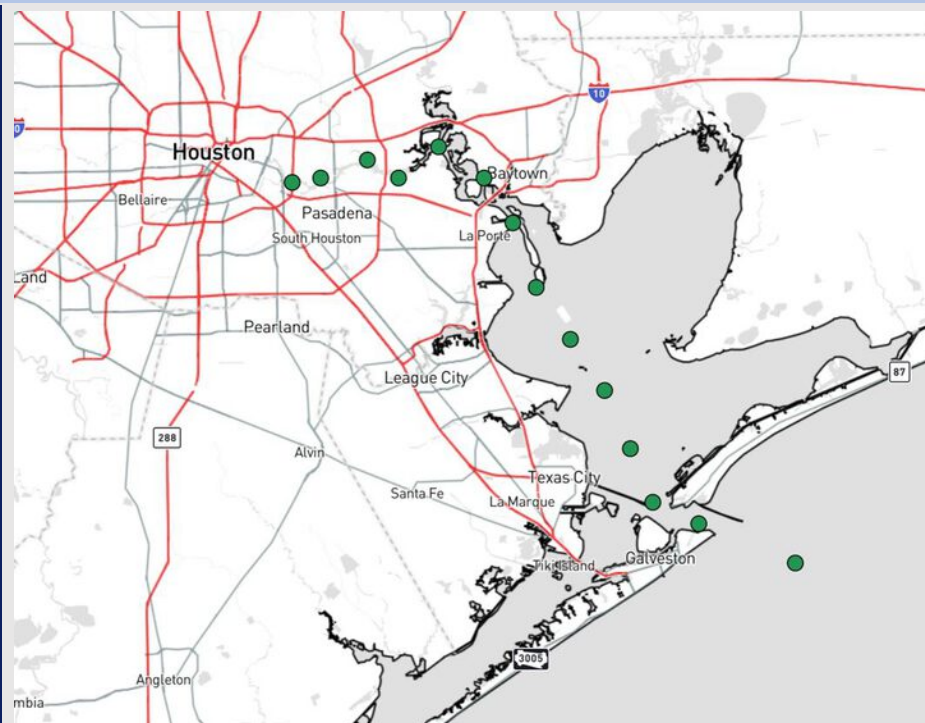


Updated: 1:00 PM CT
Sunday, April 27, 2025

Forecaster: Hope Kleitsch

Weather Headlines

- Isolated showers will be possible at times across the next 72 hours.
- **Gusts up to 25 kts will be possible for all Stations on Monday and Tuesday.**
- No visibility concerns for the foreseeable future.



Current Radar: 1:00 PM CT

As always, please do not hesitate to reach out to us with any forecast questions at **(317)-560-8122**. Press **1** for forecast questions.

You can also access real-time forecast updates and 24/7 meteorological chat assistance on your **Clarity** app. Click [here](#) for login assistance.



Houston Pilots Visibility Chart (miles)



Visibility	Sun 2 pm	Sun 3 pm	Sun 4 pm	Sun 5 pm	Sun 6 pm	Sun 7 pm	Sun 8 pm	Sun 9 pm	Sun 10 pm	Sun 11 pm	Mon 12 am	Mon 1 am	Mon 2 am	Mon 3 am	Mon 4 am	Mon 5 am	Mon 6 am	Mon 7 am	Mon 8 am	Mon 9 am	Mon 10 am	Mon 11 am	Mon 12 pm	Mon 1 pm
Houston Pilots N - 610 Bridge	10	10	10	10	10	10	10	10	10	10	10	10	10	10	10	9	7.9	6.9	5.9	6.9	10	10	10	10
Houston Pilots M - Kinder 1	10	10	10	10	10	10	10	10	10	10	10	10	10	10	10	9	7.9	6.9	5.9	6.9	10	10	10	10
Houston Pilots L - Greens Bayou	10	10	10	10	10	10	10	10	10	10	10	10	10	10	10	9	7.9	6.9	5.9	6.9	10	10	10	10
Houston Pilots K - Shell Crude	10	10	10	10	10	10	10	10	10	10	10	10	10	10	10	9	7.9	6.9	5.9	6.9	10	10	10	10
Houston Pilots J - Lynchburg Ferries	10	10	10	10	10	10	10	10	10	10	10	10	10	10	10	9	7.9	6.9	5.9	6.9	10	10	10	10
Houston Pilots I - Exxon 3	10	10	10	10	10	10	10	10	10	10	10	10	10	10	10	10	7.9	6.9	5.9	6.9	10	10	10	10
Houston Pilots H - Morgans Point	10	10	10	10	10	10	10	10	10	10	10	10	10	10	10	10	7.9	6.9	5.9	6.9	10	10	10	10
Houston Pilots G - 75/76	10	10	10	10	10	10	10	10	10	10	10	10	10	10	10	10	9	6.9	6.9	5.9	9	10	10	10
Houston Pilots F - 63/64	10	10	10	10	10	10	10	10	10	10	10	10	10	10	10	10	9	6.9	6.9	5.9	9	10	10	10
Houston Pilots E - 51/52	10	10	10	10	10	10	10	10	10	10	10	10	10	10	10	10	9	7.9	6.9	5.9	7.9	10	10	10
Houston Pilots D - 37/38	10	10	10	10	10	10	10	10	10	10	10	10	10	10	10	10	9	7.9	6.9	5.9	7.9	10	10	10
Houston Pilots C - 25/26	10	10	10	10	10	10	10	10	10	10	10	10	10	10	10	10	10	7.9	6.9	5.9	7.9	10	10	10
Houston Pilots B - 11/12	10	10	10	10	10	10	10	10	10	10	10	10	10	10	10	10	9	7.9	6.9	4.9	6.9	10	10	10
Houston Pilots A - 1 & 2 Bravo	10	10	9	7.9	9	10	10	10	10	10	10	10	10	9	9	7.9	7.9	6.9	5.9	4.9	6.9	7.9	6.9	10

NOTE: This is automated data that may/may not agree with the official BAM thinking that's found on the daily slides or special visibility report slides. This data should be used as a guide only

Houston Pilots Wind Chart



Sustained Wind 10 Knots
Gusts 15 Knots
Wind from the SE



Wind	Sun 2 pm	Sun 3 pm	Sun 4 pm	Sun 5 pm	Sun 6 pm	Sun 7 pm	Sun 8 pm	Sun 9 pm	Sun 10 pm	Sun 11 pm	Mon 12 am	Mon 1 am	Mon 2 am	Mon 3 am	Mon 4 am	Mon 5 am	Mon 6 am	Mon 7 am	Mon 8 am	Mon 9 am	Mon 10 am	Mon 11 am	Mon 12 pm	Mon 1 pm
Houston Pilots N - 610 Bridge	10 20 ↗	12 21 ↗	12 22 ↗	12 23 ↗	13 23 ↗	12 23 ↗	12 22 ↗	10 21 ↗	9 18 ↗	8 17 ↗	8 16 ↗	7 15 ↗	7 15 ↗	7 14 ↗	6 14 ↗	6 14 ↗	6 14 ↗	6 13 ↗	6 14 ↗	7 15 ↗	8 17 ↗	10 20 ↗	10 22 ↗	13 23 ↗
Houston Pilots M - Kinder 1	10 20 ↗	12 21 ↗	12 22 ↗	12 23 ↗	13 23 ↗	12 23 ↗	12 22 ↗	10 21 ↗	9 18 ↗	8 17 ↗	8 16 ↗	7 15 ↗	7 15 ↗	6 14 ↗	6 14 ↗	6 14 ↗	6 14 ↗	6 13 ↗	6 14 ↗	7 15 ↗	8 17 ↗	10 20 ↗	10 22 ↗	13 23 ↗
Houston Pilots L - Greens Bayou	10 20 ↗	12 21 ↗	12 22 ↗	12 23 ↗	13 23 ↗	12 22 ↗	12 22 ↗	10 20 ↗	9 18 ↗	8 16 ↗	8 16 ↗	7 15 ↗	7 15 ↗	6 14 ↗	6 14 ↗	6 14 ↗	6 13 ↗	6 13 ↗	6 13 ↗	7 15 ↗	8 17 ↗	10 20 ↗	10 21 ↗	13 23 ↗
Houston Pilots K - Shell Crude	10 20 ↗	12 21 ↗	12 22 ↗	12 22 ↗	13 23 ↗	12 22 ↗	12 22 ↗	10 20 ↗	9 18 ↗	8 16 ↗	8 16 ↗	7 15 ↗	7 15 ↗	7 14 ↗	6 14 ↗	6 14 ↗	6 14 ↗	6 13 ↗	6 13 ↗	7 15 ↗	8 17 ↗	10 20 ↗	12 21 ↗	13 23 ↗
Houston Pilots J - Lynchburg Ferries	12 20 ↗	12 21 ↗	12 21 ↗	13 22 ↗	13 23 ↗	12 22 ↗	12 22 ↗	10 20 ↗	8 18 ↗	8 16 ↗	8 15 ↗	7 15 ↗	7 14 ↗	6 14 ↗	6 13 ↗	6 13 ↗	6 13 ↗	6 13 ↗	6 13 ↗	7 14 ↗	8 16 ↗	10 18 ↗	12 21 ↗	13 22 ↗
Houston Pilots I - Exxon 3	12 20 ↗	13 21 ↗	14 22 ↗	14 22 ↗	14 23 ↗	14 22 ↗	14 22 ↗	13 20 ↗	13 18 ↗	12 17 ↗	10 17 ↗	10 16 ↗	10 16 ↗	10 16 ↗	10 15 ↗	9 15 ↗	9 15 ↗	9 14 ↗	9 15 ↗	10 16 ↗	12 17 ↗	13 20 ↗	13 21 ↗	14 22 ↗
Houston Pilots H - Morgans Point	12 20 ↗	13 21 ↗	14 22 ↗	14 22 ↗	14 22 ↗	14 22 ↗	14 22 ↗	13 20 ↗	13 18 ↗	12 17 ↗	10 17 ↗	10 16 ↗	10 16 ↗	10 16 ↗	10 15 ↗	10 15 ↗	9 15 ↗	9 15 ↗	9 15 ↗	10 16 ↗	10 17 ↗	13 18 ↗	13 21 ↗	14 22 ↗
Houston Pilots G - 75/76	13 21 ↗	14 21 ↗	14 22 ↗	14 23 ↗	15 23 ↗	15 23 ↗	15 22 ↗	14 21 ↗	13 20 ↗	13 20 ↗	13 18 ↗	13 17 ↗	13 17 ↗	13 17 ↗	13 17 ↗	12 17 ↗	12 17 ↗	12 17 ↗	12 17 ↗	13 18 ↗	13 20 ↗	14 21 ↗	14 22 ↗	15 23 ↗
Houston Pilots F - 63/64	13 20 ↗	13 21 ↗	14 22 ↗	14 23 ↗	15 23 ↗	15 22 ↗	15 22 ↗	14 21 ↗	13 20 ↗	13 20 ↗	13 18 ↗	13 17 ↗	13 17 ↗	13 17 ↗	13 18 ↗	13 18 ↗	12 17 ↗	12 17 ↗	12 17 ↗	13 18 ↗	13 20 ↗	14 21 ↗	15 22 ↗	15 23 ↗
Houston Pilots E - 51/52	13 20 ↗	13 21 ↗	13 21 ↗	13 22 ↗	14 22 ↗	14 21 ↗	14 21 ↗	13 20 ↗	13 20 ↗	13 18 ↗	13 18 ↗	13 18 ↗	13 18 ↗	13 17 ↗	13 18 ↗	13 18 ↗	13 18 ↗	13 17 ↗	12 17 ↗	13 18 ↗	13 20 ↗	14 21 ↗	15 22 ↗	15 23 ↗
Houston Pilots D - 37/38	12 20 ↗	13 20 ↗	13 21 ↗	13 21 ↗	13 21 ↗	13 20 ↗	13 20 ↗	13 20 ↗	13 20 ↗	13 18 ↗	13 18 ↗	13 18 ↗	13 18 ↗	13 17 ↗	13 18 ↗	13 18 ↗	13 18 ↗	13 17 ↗	12 17 ↗	13 18 ↗	13 20 ↗	14 21 ↗	15 22 ↗	15 22 ↗
Houston Pilots C - 25/26	12 20 ↗	12 20 ↗	13 20 ↗	13 20 ↗	13 20 ↗	13 20 ↗	13 20 ↗	13 18 ↗	13 18 ↗	13 18 ↗	13 18 ↗	13 17 ↗	13 17 ↗	13 17 ↗	13 18 ↗	13 18 ↗	13 18 ↗	13 17 ↗	12 17 ↗	13 18 ↗	13 20 ↗	14 21 ↗	14 22 ↗	15 22 ↗
Houston Pilots B - 11/12	12 17 ↗	12 18 ↗	12 18 ↗	12 18 ↗	12 17 ↗	12 17 ↗	12 18 ↗	12 17 ↗	12 17 ↗	12 17 ↗	12 17 ↗	12 17 ↗	12 17 ↗	12 17 ↗	12 17 ↗	12 17 ↗	12 17 ↗	10 17 ↗	10 17 ↗	10 17 ↗	12 18 ↗	13 20 ↗	14 21 ↗	14 22 ↗
Houston Pilots A - 1 & 2 Bravo	10 16 ↗	12 16 ↗	12 17 ↗	12 17 ↗	12 17 ↗	13 17 ↗	13 18 ↗	13 18 ↗	13 20 ↗	13 18 ↗	13 20 ↗	13 18 ↗	13 18 ↗	13 18 ↗	13 20 ↗	13 20 ↗	13 18 ↗	13 18 ↗	13 17 ↗	13 18 ↗	13 20 ↗	13 20 ↗	14 21 ↗	14 22 ↗

NOTE: This is automated data that may/may not agree with the official BAM thinking that's found on the daily slides.
This data should be used as a guide only.

Houston Pilots: SUN. 4/27/2025

Forecast Discussion

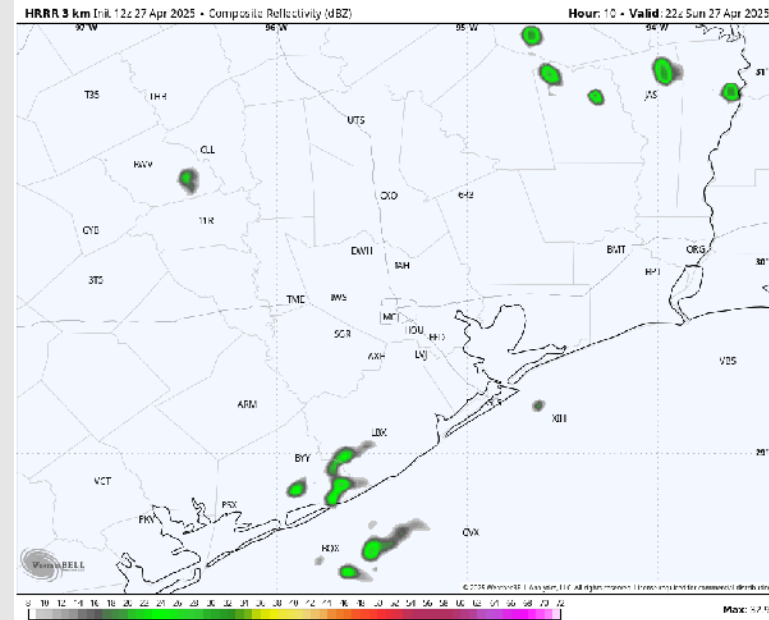
Precip: Isolated showers (10%) will be possible through 4PM.

Wind: Winds will be out of the SE throughout the rest of the day. **N of Morgan's Point:** Winds will be at 5 – 10 kts the rest of the day. **S of Morgan's Point:** Winds will be at 10 – 15 kts throughout the rest of the day. **Wind gusts up to 20 kts will be possible at all Stations for the rest of the day.**

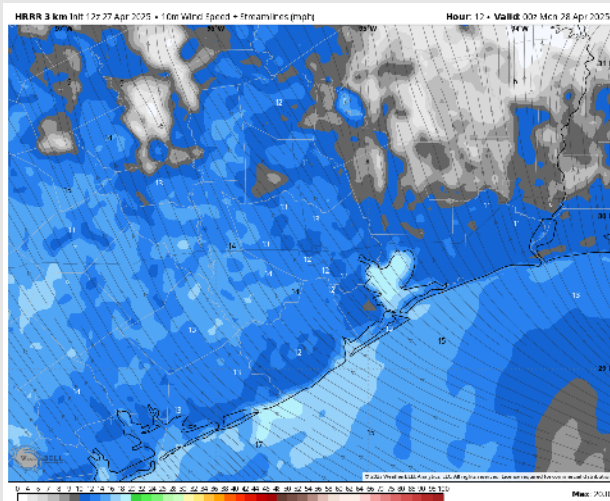
Low Temps: **N of Morgan's Point:** Near 70 F. **S of Morgan's Point:** Low 70s F.

Visibility: No visibility concerns for the remainder of today.

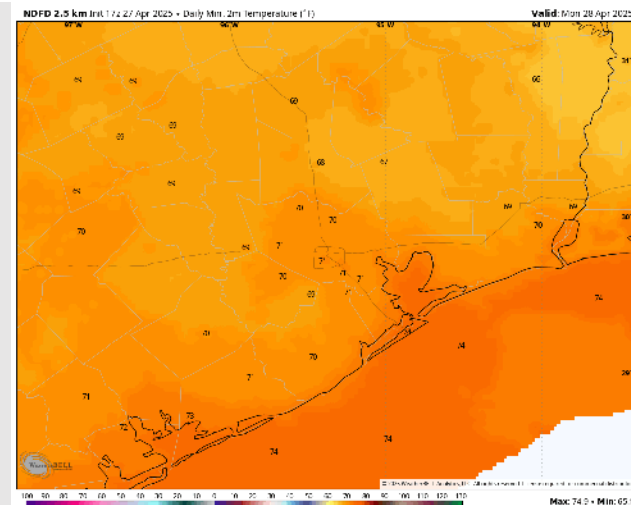
Precip Image: 5 PM CT



Wind Speed
7 PM CT



Low Temps
MON AM



Houston Pilots: MON. 4/28/2025

Forecast Discussion

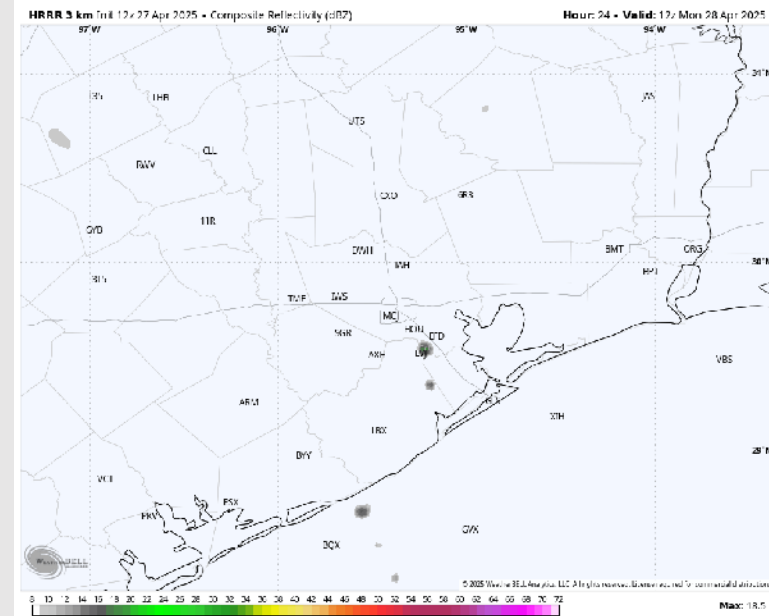
Precip: Isolated showers (10-20%) will be possible from 7AM – 5 PM for all Stations Monday.

Wind: Winds will be out of the S/SE for all of Monday. **N of Morgan's Point:** Winds will be at 3 – 7 kts through 9AM before increasing to 8 – 13 kts. **S of Morgan's Point:** Winds will be at 11 – 16 kts throughout the day. **Wind gusts up to 22 kts will be possible for all Stations throughout the day.**

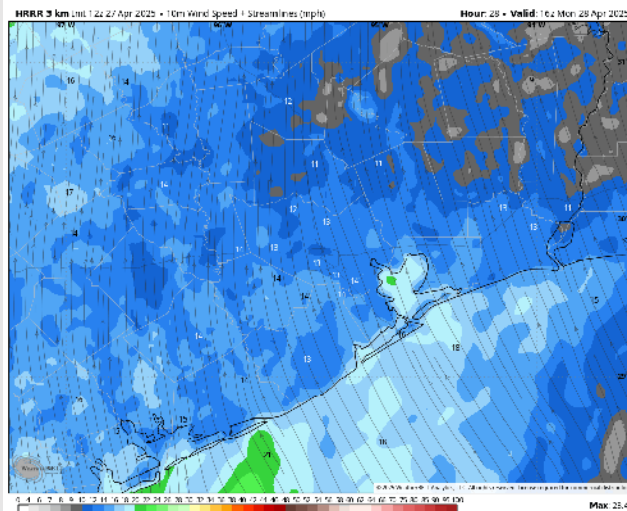
High Temps: **N of Morgan's Point:** Mid 80s F. **S of Morgan's Point:** Near 80 F.

Visibility: No visibility concerns for Monday.

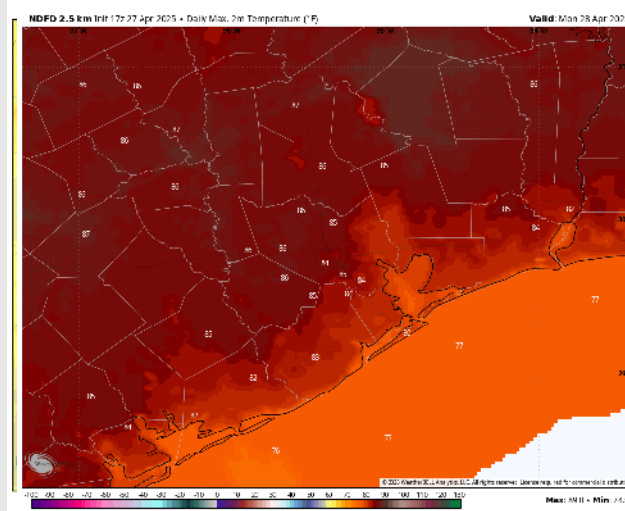
Precip Image: 7 AM CT



Wind Speed:
11 AM CT



High Temps
Monday



Houston Pilots: TUE. 4/29/2025

Forecast Discussion

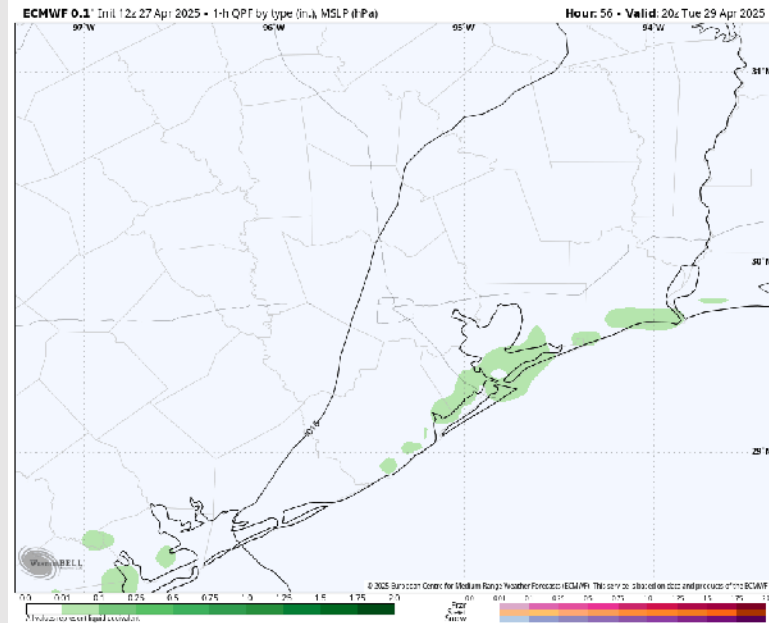
Precip: Hit/miss (40%) showers in play S of Morgan's Point after 3PM.

Wind: Winds will be out of the S/SE throughout Tuesday. **N of Morgan's Point:** Winds will be at 3 – 8 kts through 10 AM, increasing to 7 – 12 kts for the rest of the day. **S of Morgan's Point:** Winds will be at 10 – 15 kts throughout the day. **Wind gusts up to 25 kts will be possible for all Stations throughout Tuesday.**

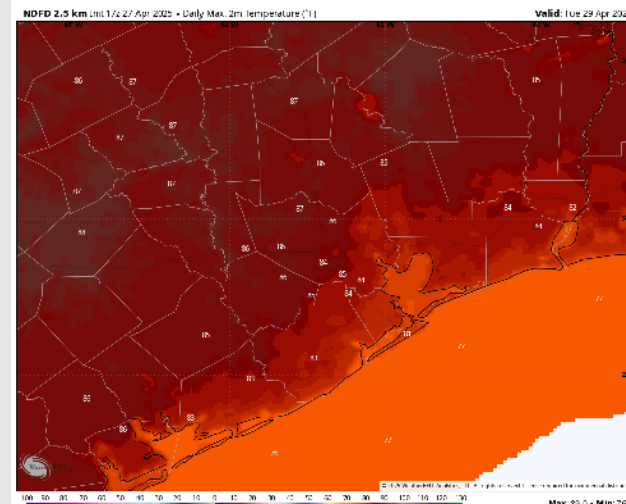
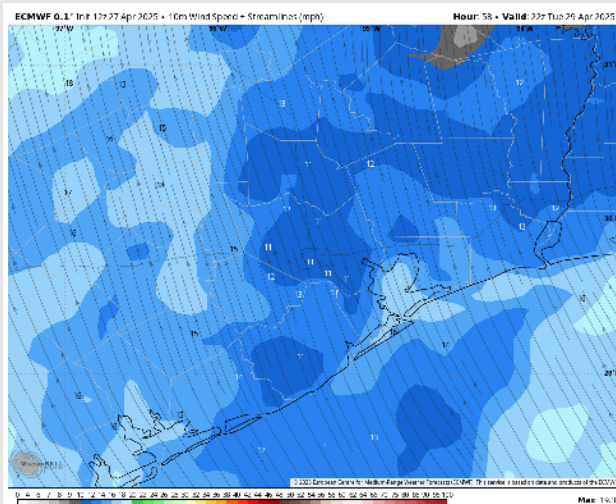
High Temps: **N of Morgan's Point:** Mid 80s F. **S of Morgan's Point:** Near 80 F.

Visibility: Not anticipating visibility concerns for Tuesday.

Precip Image: 3 PM CT



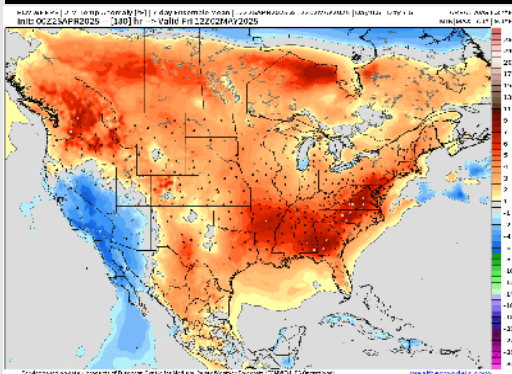
Wind Speed:
5 PM CT



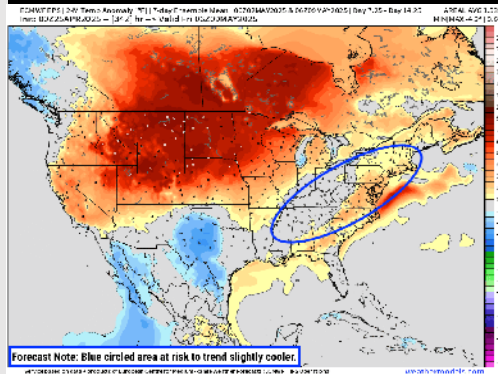
High Temps
Tuesday

Houston Pilots: 4/27/25

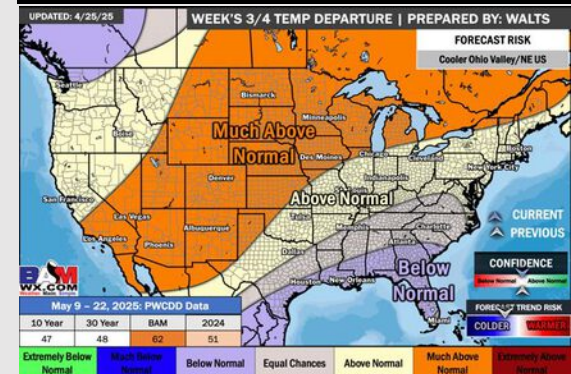
Next 7 Day Temperature Departure



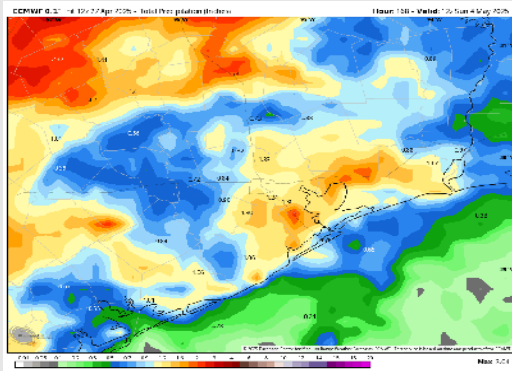
8-14 Day Temperature Departure



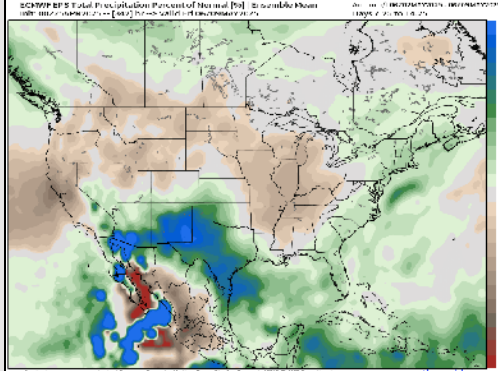
15-30 Day Temperature Departure



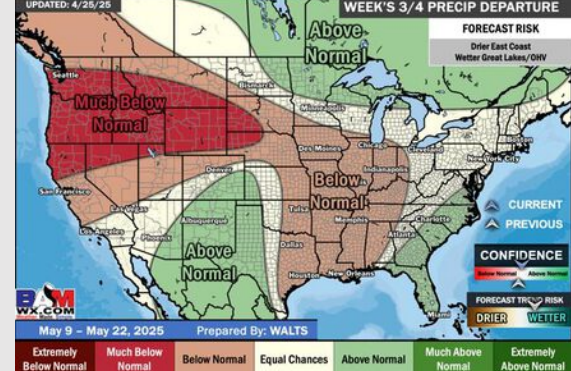
Next 7 Day Total Precipitation



8-14 Day % of Average Precip.



15-30 Day % of Average Precip.



- Temps are expected to be above normal the next 7 days. Scattered rain showers expected throughout the week with heaviest rain over next weekend.
- Near normal temps and well above normal rainfall is favored 8 - 14 days from now.
- Below normal temperatures and below normal precipitation chances are favored for mid May.