

Houston Pilots Forecast Package



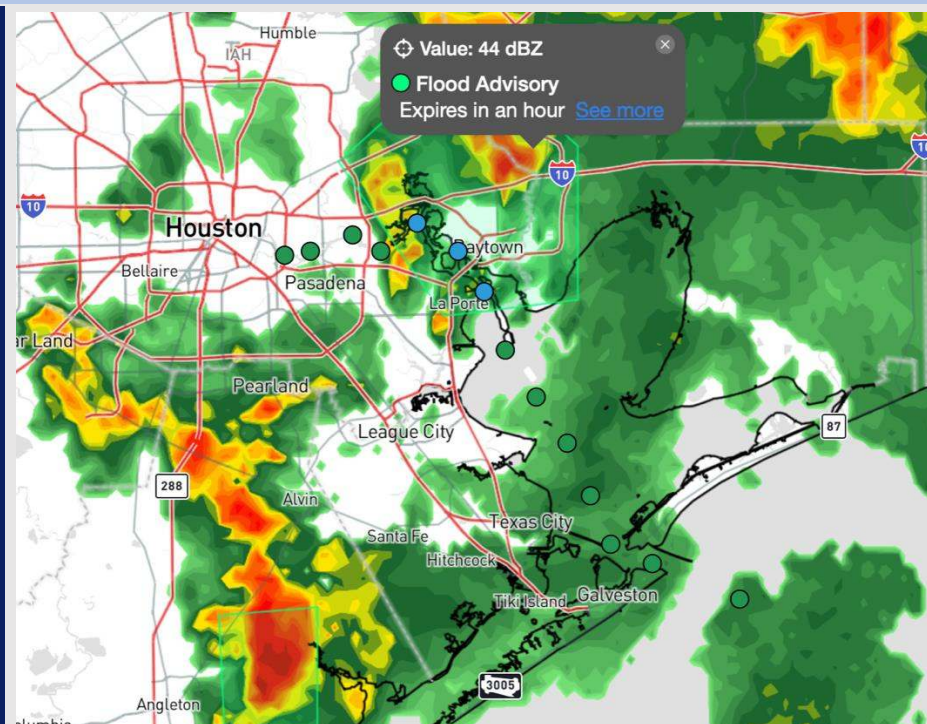
Updated: 1:00 PM CT

Wednesday, April 23, 2025

Forecaster: Hope Kleitsch

Weather Headlines

- Favoring widespread showers/storms to become more isolated this evening before clearing out by 8PM.
- Scattered showers and storms will be possible over the next 72 hours.
- Non-thunderstorm wind gusts on THU and FRI may reach 20 kts.



Current Radar: 1:00 PM CT

As always, please do not hesitate to reach out to us with any forecast questions at (317)-560-8122. Press 1 for forecast questions.

You can also access real-time forecast updates and 24/7 meteorological chat assistance on your [Clarity](#) app. Click [here](#) for login assistance.



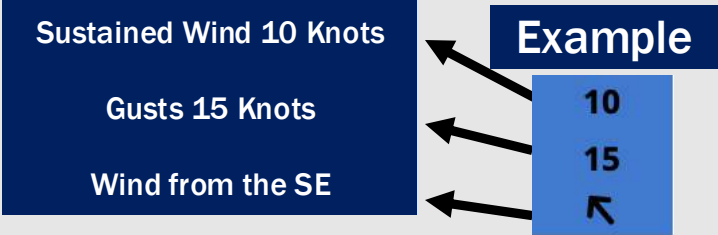
Houston Pilots Visibility Chart (miles)



Visibility	Wed 2 pm	Wed 3 pm	Wed 4 pm	Wed 5 pm	Wed 6 pm	Wed 7 pm	Wed 8 pm	Wed 9 pm	Wed 10 pm	Wed 11 pm	Thu 12 am	Thu 1 am	Thu 2 am	Thu 3 am	Thu 4 am	Thu 5 am	Thu 6 am	Thu 7 am	Thu 8 am	Thu 9 am	Thu 10 am	Thu 11 am	Thu 12 pm	Thu 1 pm
Houston Pilots N - 610 Bridge	4.9	5.9	5.9	5.9	5.9	5.9	5.9	6.9	6.9	6.9	5.9	5.9	4.9	4.9	4.9	4.9	4.9	4.9	3.9	3.9	4.9	5.9	6.9	9
Houston Pilots M - Kinder 1	4.9	4.9	5.9	5.9	5.9	5.9	5.9	5.9	6.9	6.9	5.9	5.9	4.9	4.9	4.9	4.9	4.9	4.9	3.9	3.9	4.9	5.9	6.9	10
Houston Pilots L - Greens Bayou	4.9	4.9	5.9	5.9	5.9	5.9	5.9	5.9	6.9	6.9	5.9	5.9	4.9	4.9	4.9	4.9	4.9	4.9	3.9	3.9	4.9	5.9	6.9	10
Houston Pilots K - Shell Crude	4.9	4.9	5.9	4.9	5.9	5.9	5.9	5.9	6.9	6.9	5.9	5.9	4.9	4.9	4.9	4.9	4.9	4.9	3.9	3.9	4.9	5.9	6.9	10
Houston Pilots J - Lynchburg Ferries	4.9	4.9	4.9	4.9	5.9	5.9	5.9	5.9	6.9	6.9	5.9	5.9	4.9	4.9	4.9	4.9	4.9	4.9	3.9	3.9	4.9	5.9	6.9	10
Houston Pilots I - Exxon 3	4.9	4.9	4.9	4.9	5.9	5.9	5.9	5.9	6.9	6.9	5.9	5.9	4.9	5.9	4.9	4.9	4.9	4.9	3.9	3.9	4.9	5.9	7.9	10
Houston Pilots H - Morgans Point	4.9	4.9	4.9	4.9	5.9	4.9	5.9	5.9	6.9	6.9	5.9	5.9	4.9	4.9	4.9	4.9	4.9	4.9	3.9	3.9	4.9	5.9	7.9	10
Houston Pilots G - 75/76	3.9	3.9	4.9	5.9	5.9	4.9	4.9	4.9	5.9	5.9	5.9	5.9	4.9	4.9	4.9	4.9	4.9	4.9	3.9	2.9	3.9	5.9	6.9	10
Houston Pilots F - 63/64	3.9	3.9	4.9	5.9	5.9	4.9	4.9	4.9	5.9	5.9	5.9	4.9	4.9	4.9	4.9	4.9	4.9	4.9	3.9	2.9	3.9	5.9	6.9	10
Houston Pilots E - 51/52	3.9	3	5.9	5.9	5.9	4.9	4.9	4.9	5.9	5.9	5.9	4.9	4.9	4.9	4.9	4.9	4.9	4.9	3.9	2.9	3.9	5.9	6.9	10
Houston Pilots D - 37/38	3.9	3.9	5.9	5.9	5.9	4.9	4.9	4.9	5.9	5.9	5.9	4.9	4.9	4.9	4.9	4.9	4.9	4.9	3.9	2.9	3.9	5.9	6.9	10
Houston Pilots C - 25/26	3.9	3.9	7.9	6.9	5.9	4.9	5.9	4.9	5.9	5.9	5.9	5.9	4.9	4.9	4.9	4.9	4.9	4.9	3.9	2.9	4.9	5.9	6.9	10
Houston Pilots B - 11/12	3.9	3.9	6.9	5.9	4.9	4.9	4.9	4.9	5.9	5.9	5.9	4.9	4.9	4.9	4.9	4.9	4.9	4.9	3.9	2.9	3.9	5.9	6.9	10
Houston Pilots A - 1 & 2 Bravo	4.9	3.9	4.9	4.9	4.9	4.9	4.9	4.9	5.9	5.9	4.9	4.9	4.9	4.9	4.9	4.9	4.9	4.9	3.9	2.9	3.9	5.9	6.9	9

NOTE: This is automated data that may/may not agree with the official BAM thinking that's found on the daily slides or special visibility report slides. This data should be used as a guide only

Houston Pilots Wind Chart



Wind	Wed 2 pm	Wed 3 pm	Wed 4 pm	Wed 5 pm	Wed 6 pm	Wed 7 pm	Wed 8 pm	Wed 9 pm	Wed 10 pm	Wed 11 pm	Thu 12 am	Thu 1 am	Thu 2 am	Thu 3 am	Thu 4 am	Thu 5 am	Thu 6 am	Thu 7 am	Thu 8 am	Thu 9 am	Thu 10 am	Thu 11 am	Thu 12 pm	Thu 1 pm
Houston Pilots N - 610 Bridge	10 20 ↖	10 21 ↖	10 21 ↖	10 22 ↖	10 21 ↖	10 21 ↖	10 18 ↖	9 18 ↖	8 17 ↖	8 17 ↖	8 16 ↖	7 16 ↖	7 15 ↖	7 15 ↖	7 15 ↖	7 15 ↖	7 15 ↖	7 15 ↖	7 15 ↖	8 15 ↖	8 16 ↖	9 18 ↖	10 20 ↖	10 22 ↖
Houston Pilots M - Kinder 1	10 20 ↖	10 21 ↖	10 21 ↖	10 22 ↖	10 21 ↖	10 21 ↖	10 18 ↖	9 18 ↖	8 17 ↖	8 17 ↖	8 16 ↖	7 16 ↖	7 15 ↖	7 15 ↖	7 15 ↖	7 15 ↖	7 15 ↖	7 15 ↖	7 15 ↖	8 15 ↖	8 16 ↖	9 18 ↖	10 20 ↖	10 22 ↖
Houston Pilots L - Greens Bayou	10 20 ↖	10 21 ↖	10 21 ↖	10 21 ↖	10 21 ↖	10 21 ↖	10 18 ↖	9 17 ↖	8 17 ↖	8 16 ↖	8 16 ↖	7 16 ↖	7 15 ↖	7 15 ↖	7 15 ↖	7 15 ↖	7 15 ↖	7 15 ↖	7 15 ↖	8 15 ↖	8 16 ↖	9 18 ↖	10 20 ↖	10 22 ↖
Houston Pilots K - Shell Crude	10 20 ↖	10 21 ↖	10 21 ↖	10 21 ↖	10 21 ↖	10 21 ↖	10 18 ↖	9 17 ↖	8 17 ↖	8 16 ↖	8 16 ↖	8 16 ↖	7 15 ↖	7 15 ↖	7 15 ↖	7 15 ↖	7 15 ↖	7 15 ↖	7 15 ↖	8 15 ↖	8 16 ↖	9 18 ↖	10 20 ↖	10 22 ↖
Houston Pilots J - Lynchburg Ferries	10 20 ↖	10 21 ↖	10 21 ↖	10 21 ↖	10 21 ↖	10 21 ↖	10 18 ↖	9 17 ↖	8 17 ↖	8 16 ↖	8 16 ↖	7 15 ↖	7 15 ↖	7 15 ↖	6 14 ↖	6 14 ↖	6 15 ↖	6 15 ↖	7 15 ↖	8 15 ↖	8 16 ↖	9 18 ↖	10 20 ↖	10 21 ↖
Houston Pilots I - Exxon 3	12 20 ↖	13 21 ↖	13 21 ↖	13 21 ↖	13 21 ↖	13 21 ↖	13 20 ↖	13 18 ↖	12 17 ↖	10 17 ↖	10 17 ↖	10 17 ↖	10 16 ↖	10 16 ↖	10 16 ↖	10 15 ↖	10 15 ↖	10 15 ↖	10 15 ↖	10 16 ↖	12 17 ↖	12 18 ↖	13 20 ↖	13 21 ↖
Houston Pilots H - Morgans Point	12 20 ↖	13 21 ↖	13 21 ↖	13 22 ↖	13 22 ↖	13 21 ↖	13 20 ↖	13 18 ↖	12 17 ↖	12 17 ↖	10 17 ↖	10 17 ↖	10 16 ↖	10 16 ↖	10 16 ↖	10 16 ↖	10 16 ↖	10 16 ↖	10 16 ↖	10 16 ↖	12 17 ↖	12 18 ↖	13 20 ↖	13 21 ↖
Houston Pilots G - 75/76	13 21 ↖	13 22 ↖	13 22 ↖	14 23 ↖	14 23 ↖	14 22 ↖	14 21 ↖	13 21 ↖	13 20 ↖	13 18 ↖	13 18 ↖	13 18 ↖	13 18 ↖	13 18 ↖	13 17 ↖	13 18 ↖	13 18 ↖	13 18 ↖	13 18 ↖	13 18 ↖	13 20 ↖	13 20 ↖	14 21 ↖	14 22 ↖
Houston Pilots F - 63/64	13 21 ↖	13 22 ↖	13 22 ↖	14 23 ↖	14 22 ↖	14 22 ↖	14 21 ↖	13 20 ↖	13 18 ↖	13 18 ↖	13 18 ↖	13 18 ↖	13 18 ↖	13 18 ↖	13 18 ↖	13 18 ↖	13 18 ↖	13 18 ↖	13 18 ↖	13 18 ↖	13 20 ↖	14 20 ↖	14 21 ↖	14 22 ↖
Houston Pilots E - 51/52	13 21 ↖	13 22 ↖	13 22 ↖	13 22 ↖	14 22 ↖	14 21 ↖	14 20 ↖	13 20 ↖	13 18 ↖	13 18 ↖	13 18 ↖	13 18 ↖	13 18 ↖	13 18 ↖	13 18 ↖	13 18 ↖	13 18 ↖	13 18 ↖	13 18 ↖	13 20 ↖	13 20 ↖	14 21 ↖	14 21 ↖	14 22 ↖
Houston Pilots D - 37/38	13 21 ↖	13 22 ↖	13 22 ↖	13 22 ↖	13 22 ↖	13 21 ↖	13 20 ↖	13 20 ↖	13 18 ↖	13 18 ↖	13 18 ↖	13 18 ↖	13 18 ↖	13 18 ↖	13 18 ↖	13 18 ↖	13 18 ↖	13 18 ↖	13 18 ↖	13 20 ↖	13 20 ↖	14 21 ↖	14 21 ↖	14 22 ↖
Houston Pilots C - 25/26	13 20 ↖	13 21 ↖	13 21 ↖	13 21 ↖	13 21 ↖	13 21 ↖	13 20 ↖	13 20 ↖	13 18 ↖	13 18 ↖	13 18 ↖	13 18 ↖	13 18 ↖	13 18 ↖	13 18 ↖	13 18 ↖	13 18 ↖	13 18 ↖	13 18 ↖	13 18 ↖	13 20 ↖	13 20 ↖	14 21 ↖	14 21 ↖
Houston Pilots B - 11/12	13 20 ↖	13 20 ↖	13 20 ↖	13 20 ↖	13 20 ↖	13 20 ↖	13 18 ↖	13 18 ↖	12 17 ↖	12 17 ↖	12 17 ↖	12 17 ↖	12 18 ↖	12 18 ↖	12 18 ↖	12 18 ↖	12 18 ↖	12 18 ↖	12 18 ↖	13 18 ↖	13 18 ↖	13 18 ↖	14 20 ↖	14 20 ↖
Houston Pilots A - 1 & 2 Bravo	13 20 ↖	13 20 ↖	13 20 ↖	13 20 ↖	13 20 ↖	13 20 ↖	13 20 ↖	13 20 ↖	13 20 ↖	13 20 ↖	13 20 ↖	13 20 ↖	13 20 ↖	14 20 ↖	14 20 ↖	14 20 ↖	13 20 ↖	13 20 ↖	13 20 ↖	13 20 ↖	13 20 ↖	14 20 ↖	14 20 ↖	14 20 ↖

NOTE: This is automated data that may/may not agree with the official BAM thinking that's found on the daily slides.
This data should be used as a guide only.

Houston Pilots: WED. 4/23/2025

Forecast Discussion

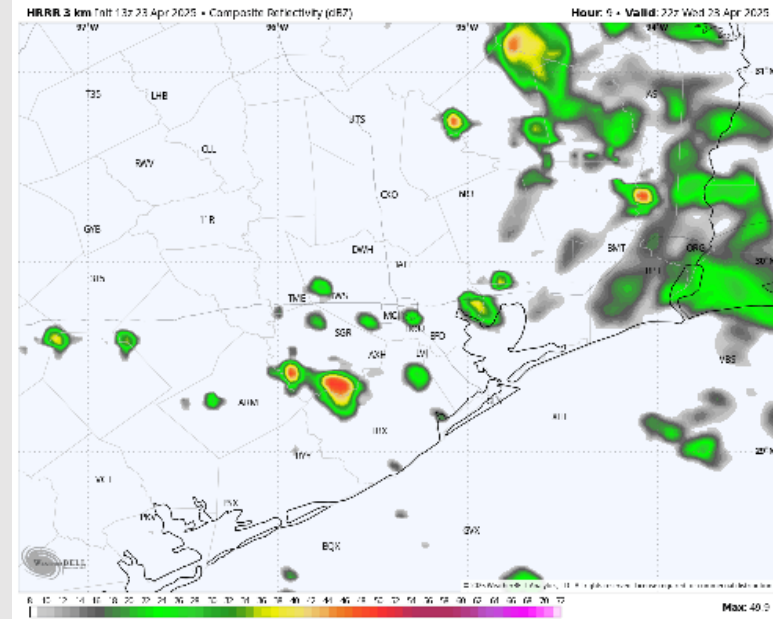
Precip: Widespread (70%) showers and storms will continue through 4 PM. After 4PM, expect showers/storms to become more scattered in nature, lasting through 8PM. **Main risks with storms will be lightning and gusts reaching 45 kts.**

Wind: Winds will be out of the SE throughout Wednesday, with the exception of 11AM – 3PM when winds will be variable as the storm front passes. **N of Morgan's Point:** Winds will be at 3 – 8 kts throughout Wednesday. **S of Morgan's Point:** Winds will be at 8 – 13 kts, increasing slightly to 11 – 16 kts from 3PM to 8PM. **Non-thunderstorm wind gusts will briefly be able to reach 20 kts at times for all Stations after 11AM.**

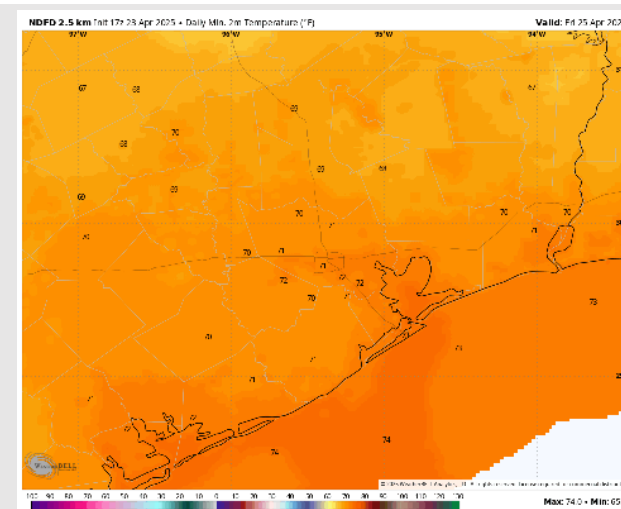
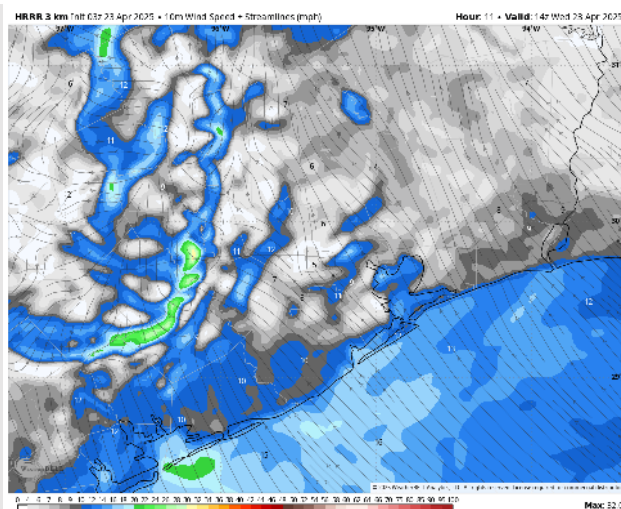
Low Temps: **N of Morgan's Point:** Low 70s F. **S of Morgan's Point:** Low 70s F.

Visibility: Not anticipating fog concerns for today, but visibilities can be reduced under heavy downpours.

Precip Image: 5 PM CT



Wind Speed:
9 AM CT



Low Temps
THU AM

Houston Pilots: THU. 4/24/2025

Forecast Discussion

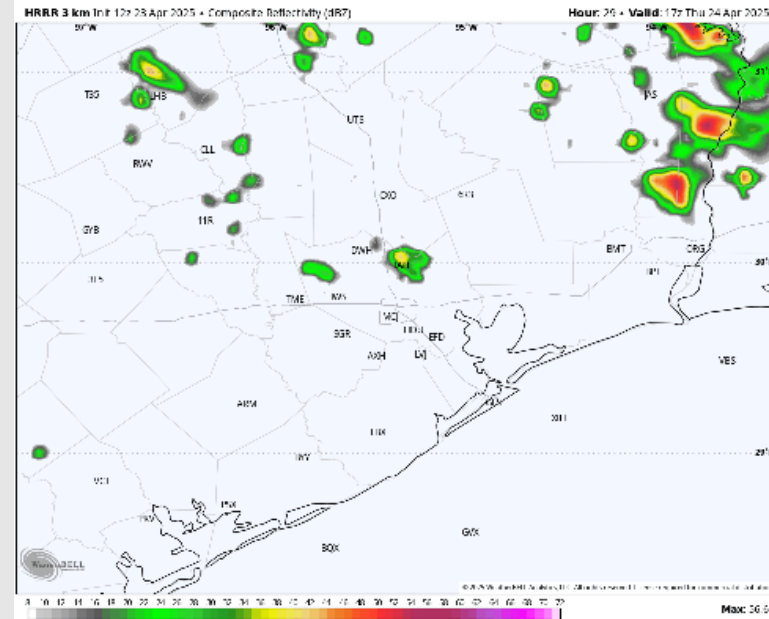
Precip: Hit/miss showers will be possible from 11AM to 4PM, however expecting most development to stay north of all Stations.

Wind: Winds will be generally out of the SE. **N of Morgan's Point:** Winds will be at 3 – 8 kts throughout the day. **S of Morgan's Point:** Winds will be at 8– 13 kts for Thursday. **A few gusts of 20 kts will be possible throughout the day for all Stations.**

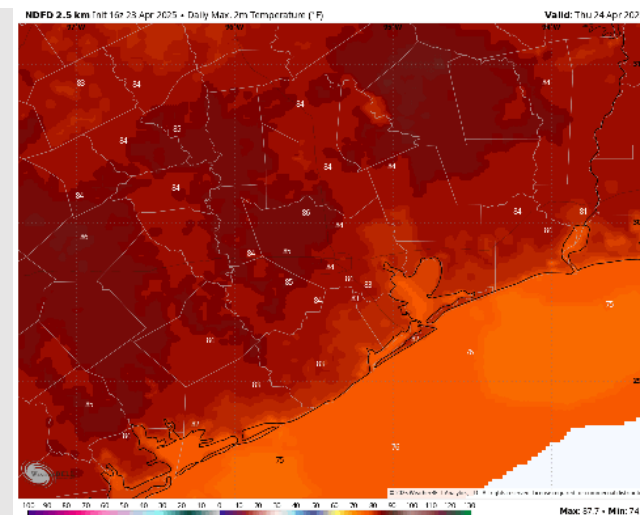
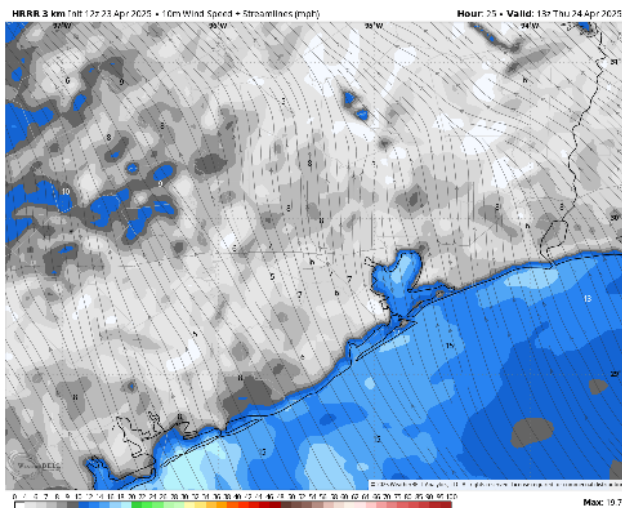
High Temps: **N of Morgan's Point:** Low 80s F. **S of Morgan's Point:** Upper 70s F.

Visibility: No fog concerns for Thursday.

Precip Image: 12 PM CT



Wind Speed
8 AM CT



High Temps
Thursday

Houston Pilots: FRI. 4/25/2025

Forecast Discussion

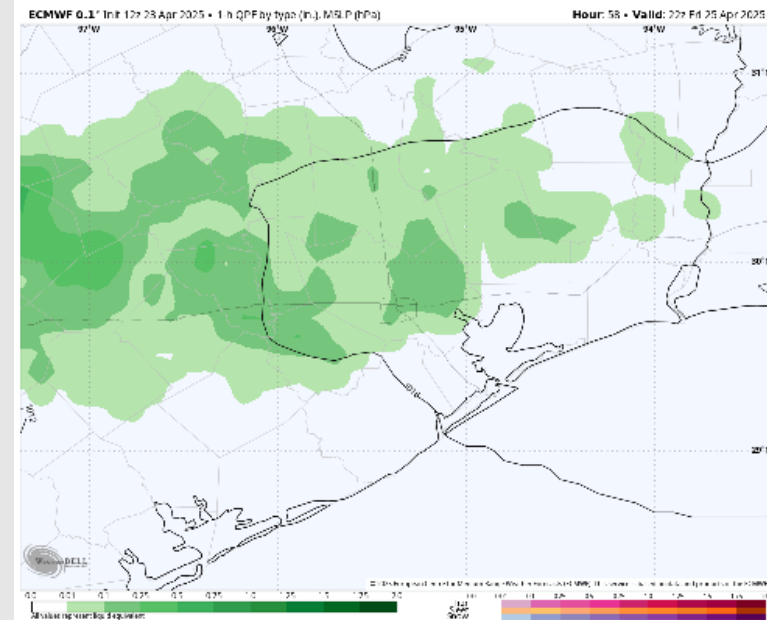
Precip: Scattered showers and a few storms will be possible from 11AM – 8PM. Best chance for storms will be from 1PM to 6PM. **Lightning and wind gusts up to 35kts will be possible within storms.**

Wind: Winds will be out of the SE throughout all of Friday. **N of Morgan's Point:** Winds will be at 4 – 8 kts throughout Friday. **S of Morgan's Point:** Winds will be at 7 - 11 kts throughout the day, with winds increasing briefly to 10 – 15 kts from 7AM to 12PM. **Non-thunderstorm wind gusts up to 23 kts will be possible for all Stations from 7AM to 4PM.**

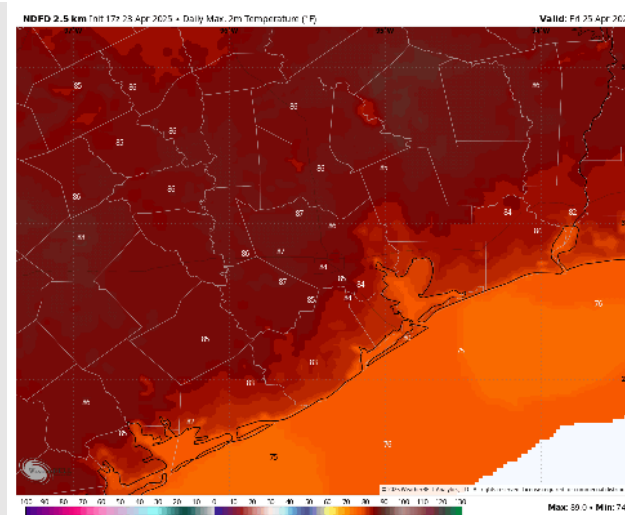
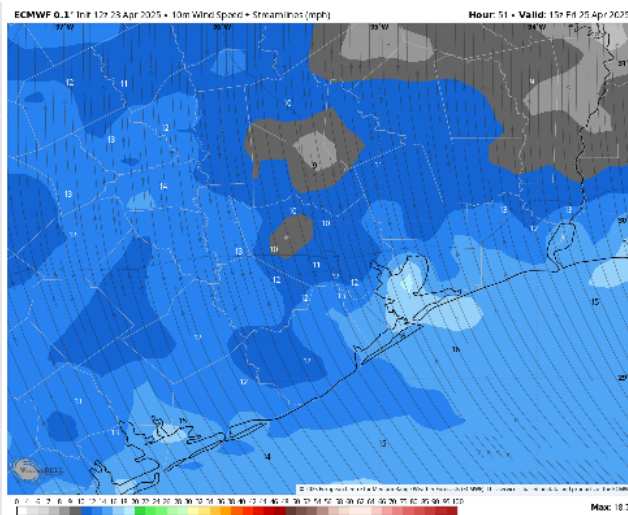
High Temps: **N of Morgan's Point:** Low to Mid 80 F. **S of Morgan's Point:** Upper 70s F.

Visibility: Not anticipating visibility concerns for Friday.

Precip Image: 5 PM CT



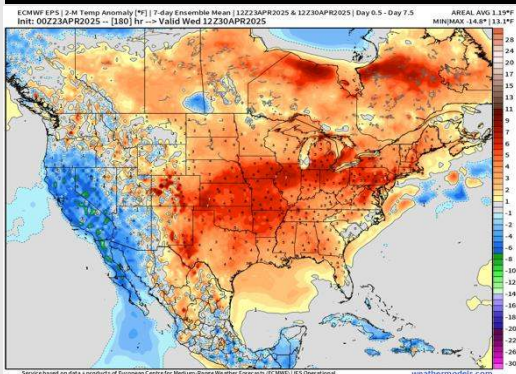
Wind Speed:
10 AM CT



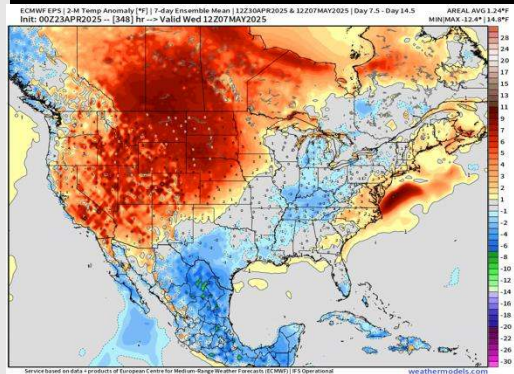
High Temps
Friday

Houston Pilots: 4/23/25

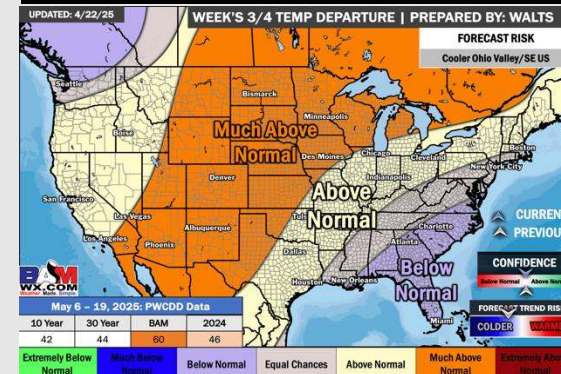
Next 7 Day Temperature Departure



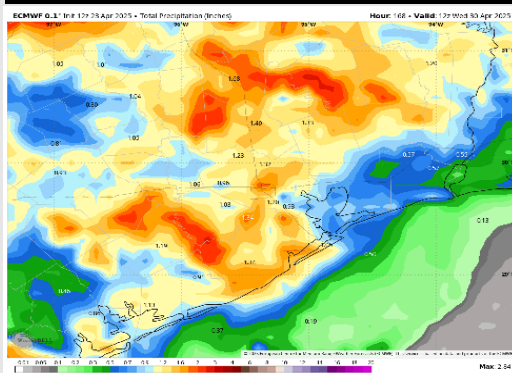
8-14 Day Temperature Departure



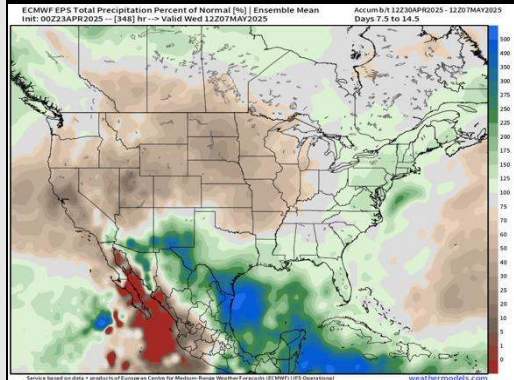
15-30 Day Temperature Departure



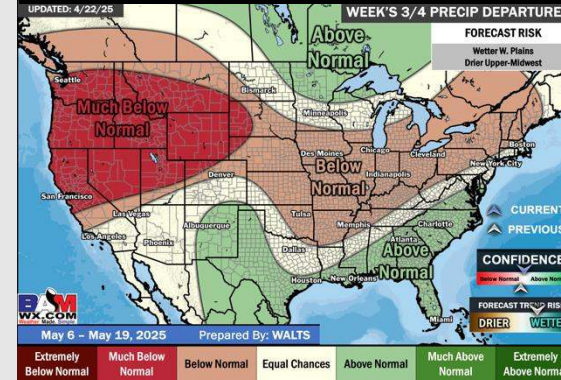
Next 7 Day Total Precipitation



8-14 Day % of Average Precip.



15-30 Day % of Average Precip.



- Temps are expected to be above normal the next 7 days. Scattered rain showers expected throughout the week.
- Slightly below normal temps and above normal rainfall is favored 8 - 14 days from now.
- Near normal temperatures and above normal precipitation chances are favored for early to mid May.