

# Houston Pilots Forecast Package



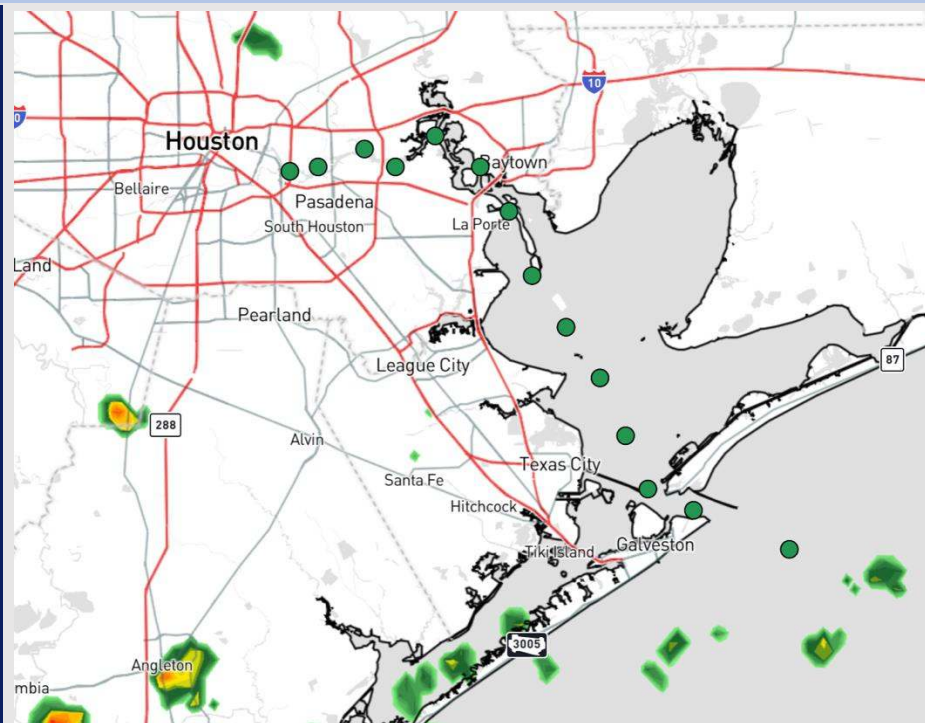
Updated: 1:05 PM CT

Tuesday, April 22, 2025

Forecaster: Hope Kleitsch

## Weather Headlines

- Isolated showers/storms will be possible through ~4PM for all Stations.
- Showers and storms will be at play again Wednesday and Thursday.
- Non-thunderstorm winds pick back up for Stations S. of Morgan's Point WED PM.



Current Radar: 1:05 PM CT

As always, please do not hesitate to reach out to us with any forecast questions at **(317)-560-8122**. Press **1** for forecast questions.

You can also access real-time forecast updates and 24/7 meteorological chat assistance on your **Clarity** app. Click [here](#) for login assistance.



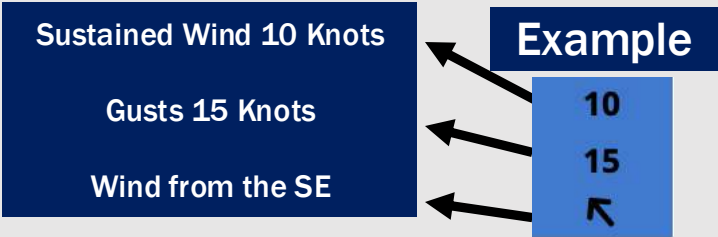
# Houston Pilots Visibility Chart (miles)



Visibility	Tue 3 pm	Tue 4 pm	Tue 5 pm	Tue 6 pm	Tue 7 pm	Tue 8 pm	Tue 9 pm	Tue 10 pm	Tue 11 pm	Wed 12 am	Wed 1 am	Wed 2 am	Wed 3 am	Wed 4 am	Wed 5 am	Wed 6 am	Wed 7 am	Wed 8 am	Wed 9 am	Wed 10 am	Wed 11 am	Wed 12 pm	Wed 1 pm	Wed 2 pm
Houston Pilots N - 610 Bridge	10	10	10	10	10	10	10	10	10	9	6.9	6.9	5.9	5.9	6.9	6.9	6.9	5.9	5.9	6.9	10	10	10	10
Houston Pilots M - Kinder 1	10	10	10	10	10	10	10	10	10	9	6.9	6.9	6.9	6.9	6.9	6.9	6.9	5.9	5.9	6.9	10	10	10	10
Houston Pilots L - Greens Bayou	10	10	10	10	10	10	10	10	10	10	9	6.9	6.9	6.9	6.9	6.9	6.9	5.9	5.9	6.9	10	10	10	10
Houston Pilots K - Shell Crude	10	10	10	10	10	10	10	10	10	10	9	6.9	6.9	6.9	6.9	6.9	6.9	4.9	4.9	6.9	9	10	10	10
Houston Pilots J - Lynchburg Ferries	10	10	10	10	10	10	10	10	10	10	9	6.9	6.9	6.9	6.9	6.9	6.9	4.9	5.9	6.9	10	10	10	10
Houston Pilots I - Exxon 3	10	10	10	10	10	10	10	10	10	10	9	6.9	6.9	6.9	6.9	6.9	6.9	4.9	4.9	6.9	9	10	10	10
Houston Pilots H - Morgans Point	10	10	10	10	10	10	10	10	10	10	9	6.9	6.9	6.9	6.9	6.9	6.9	4.9	4.9	6.9	9	10	10	10
Houston Pilots G - 75/76	6.9	7.9	6.9	6.9	7.9	9	9	9	9	6.9	6.9	6.9	5.9	4.9	4.9	4.9	4.9	3.9	2.9	3.9	4.9	5.9	9	9
Houston Pilots F - 63/64	6.9	7.9	6.9	6.9	7.9	9	9	9	9	6.9	6.9	6.9	5.9	4.9	4.9	4.9	4.9	3.9	2.9	3.9	4.9	5.9	9	9
Houston Pilots E - 51/52	6.9	6.9	6.9	6.9	6.9	6.9	6.9	7.9	6.9	6.9	6.9	5.9	4.9	4.9	4.9	4.9	4.9	3.9	2.9	3.9	3.9	4.9	9	9
Houston Pilots D - 37/38	6.9	6.9	5.9	6.9	6.9	6.9	6.9	7.9	6.9	6.9	6.9	5.9	4.9	4.9	4.9	4.9	4.9	3.9	2.9	3.9	3.9	4.9	9	9
Houston Pilots C - 25/26	6.9	6.9	5.9	6.9	6.9	6.9	6.9	6.9	6.9	6.9	5.9	5.9	4.9	4.9	4.9	4.9	4.9	3.9	2.9	3.9	3.9	4.9	9	9
Houston Pilots B - 11/12	6.9	5.9	4.9	5.9	5.9	6.9	6.9	6.9	6.9	5.9	5.9	4.9	4.9	4.9	4.9	4.9	4.9	3.9	2.9	3.9	3.9	3.9	9	9
Houston Pilots A - 1 & 2 Bravo	5.9	4.9	4.9	4.9	4.9	5.9	4.9	6.9	5.9	4.9	4.9	4.9	4.9	4.9	4.9	4.9	4.9	3.9	2.9	2.9	3.9	3.9	9	9

NOTE: This is automated data that may/may not agree with the official BAM thinking that's found on the daily slides or special visibility report slides. This data should be used as a guide only

# Houston Pilots Wind Chart



Wind	Tue 3 pm	Tue 4 pm	Tue 5 pm	Tue 6 pm	Tue 7 pm	Tue 8 pm	Tue 9 pm	Tue 10 pm	Tue 11 pm	Wed 12 am	Wed 1 am	Wed 2 am	Wed 3 am	Wed 4 am	Wed 5 am	Wed 6 am	Wed 7 am	Wed 8 am	Wed 9 am	Wed 10 am	Wed 11 am	Wed 12 pm	Wed 1 pm	Wed 2 pm
Houston Pilots N - 610 Bridge	8 16 ↖	8 16 ↖	9 17 ↖	9 17 ↖	9 17 ↖	8 16 ↖	8 15 ↖	7 14 ↖	7 13 ↖	6 13 ↖	6 13 ↖	6 13 ↖	6 13 ↖	6 12 ↖	6 12 ↖	6 10 ↖	6 12 ↖	6 12 ↖	6 13 ↖	7 14 ↖	8 15 ↖	8 16 ↖	10 18 ↖	10 21 ↖
Houston Pilots M - Kinder 1	8 17 ↖	9 16 ↖	9 17 ↖	9 18 ↖	9 17 ↖	8 16 ↖	8 15 ↖	7 14 ↖	7 13 ↖	6 13 ↖	6 13 ↖	6 13 ↖	6 13 ↖	6 12 ↖	6 12 ↖	6 10 ↖	6 12 ↖	6 12 ↖	6 13 ↖	7 14 ↖	8 15 ↖	9 17 ↖	10 18 ↖	10 21 ↖
Houston Pilots L - Greens Bayou	9 17 ↖	9 17 ↖	9 17 ↖	9 18 ↖	9 17 ↖	8 16 ↖	8 15 ↖	7 14 ↖	7 13 ↖	6 13 ↖	6 13 ↖	6 13 ↖	6 12 ↖	6 12 ↖	6 12 ↖	6 10 ↖	6 12 ↖	6 12 ↖	6 13 ↖	7 14 ↖	8 15 ↖	9 17 ↖	10 18 ↖	10 20 ↖
Houston Pilots K - Shell Crude	9 17 ↖	9 17 ↖	10 17 ↖	10 18 ↖	9 17 ↖	8 16 ↖	8 15 ↖	7 14 ↖	7 13 ↖	6 13 ↖	6 13 ↖	6 13 ↖	6 13 ↖	6 12 ↖	6 12 ↖	6 10 ↖	6 12 ↖	6 12 ↖	6 13 ↖	7 14 ↖	8 15 ↖	9 17 ↖	10 18 ↖	10 20 ↖
Houston Pilots J - Lynchburg Ferries	9 17 ↖	9 17 ↖	10 17 ↖	9 18 ↖	9 17 ↖	8 16 ↖	8 15 ↖	7 13 ↖	6 13 ↖	6 13 ↖	6 12 ↖	6 12 ↖	6 12 ↖	6 10 ↖	5 10 ↖	5 10 ↖	5 10 ↖	5 10 ↖	6 12 ↖	7 13 ↖	8 15 ↖	9 16 ↖	10 18 ↖	10 20 ↖
Houston Pilots I - Exxon 3	10 17 ↖	10 18 ↖	12 18 ↖	12 20 ↖	12 18 ↖	12 17 ↖	10 15 ↖	10 15 ↖	9 14 ↖	9 14 ↖	9 14 ↖	9 14 ↖	8 14 ↖	8 13 ↖	8 13 ↖	8 13 ↖	8 13 ↖	8 13 ↖	8 14 ↖	9 14 ↖	10 16 ↖	10 17 ↖	12 18 ↖	13 20 ↖
Houston Pilots H - Morgans Point	10 17 ↖	10 18 ↖	12 18 ↖	12 20 ↖	12 18 ↖	12 17 ↖	10 15 ↖	10 15 ↖	9 14 ↖	9 14 ↖	9 15 ↖	9 14 ↖	8 14 ↖	8 13 ↖	8 13 ↖	8 13 ↖	8 13 ↖	8 13 ↖	8 14 ↖	9 14 ↖	10 16 ↖	10 17 ↖	12 18 ↖	13 21 ↖
Houston Pilots G - 75/76	10 18 ↖	12 20 ↖	13 20 ↖	13 20 ↖	13 20 ↖	13 18 ↖	12 16 ↖	10 16 ↖	10 16 ↖	10 16 ↖	10 16 ↖	10 16 ↖	10 16 ↖	10 15 ↖	10 15 ↖	9 15 ↖	9 15 ↖	9 15 ↖	10 15 ↖	10 16 ↖	12 17 ↖	12 18 ↖	13 20 ↖	13 22 ↖
Houston Pilots F - 63/64	10 18 ↖	12 18 ↖	12 20 ↖	13 20 ↖	13 18 ↖	13 17 ↖	12 16 ↖	10 16 ↖	10 16 ↖	10 16 ↖	10 16 ↖	10 16 ↖	10 16 ↖	10 15 ↖	10 15 ↖	10 15 ↖	10 15 ↖	10 15 ↖	10 16 ↖	10 16 ↖	12 17 ↖	13 20 ↖	13 21 ↖	13 22 ↖
Houston Pilots E - 51/52	10 18 ↖	12 18 ↖	12 18 ↖	12 20 ↖	12 18 ↖	12 17 ↖	10 16 ↖	10 16 ↖	10 16 ↖	10 16 ↖	10 16 ↖	10 16 ↖	10 16 ↖	10 16 ↖	10 16 ↖	10 15 ↖	10 15 ↖	10 15 ↖	10 16 ↖	10 16 ↖	12 18 ↖	13 20 ↖	13 21 ↖	13 22 ↖
Houston Pilots D - 37/38	10 17 ↖	10 18 ↖	12 18 ↖	12 18 ↖	12 17 ↖	12 16 ↖	10 15 ↖	10 15 ↖	10 15 ↖	10 16 ↖	10 16 ↖	10 16 ↖	10 16 ↖	10 16 ↖	10 16 ↖	10 15 ↖	10 15 ↖	10 15 ↖	10 16 ↖	10 16 ↖	12 18 ↖	13 20 ↖	13 20 ↖	13 22 ↖
Houston Pilots C - 25/26	10 17 ↖	10 17 ↖	10 17 ↖	10 17 ↖	10 16 ↖	10 15 ↖	10 15 ↖	10 15 ↖	10 15 ↖	10 16 ↖	10 16 ↖	10 16 ↖	10 16 ↖	10 16 ↖	10 16 ↖	10 15 ↖	10 15 ↖	10 15 ↖	10 16 ↖	10 16 ↖	12 17 ↖	13 18 ↖	13 20 ↖	13 21 ↖
Houston Pilots B - 11/12	10 16 ↖	10 16 ↖	10 16 ↖	10 16 ↖	10 15 ↖	10 15 ↖	9 15 ↖	9 15 ↖	9 15 ↖	10 15 ↖	10 16 ↖	10 16 ↖	10 16 ↖	10 16 ↖	10 15 ↖	9 15 ↖	9 15 ↖	9 15 ↖	9 15 ↖	10 16 ↖	10 17 ↖	12 18 ↖	13 18 ↖	13 20 ↖
Houston Pilots A - 1 & 2 Bravo	9 15 ↖	9 15 ↖	10 15 ↖	10 16 ↖	10 16 ↖	10 15 ↖	10 15 ↖	10 16 ↖	10 16 ↖	10 16 ↖	12 17 ↖	12 18 ↖	12 17 ↖	12 17 ↖	10 17 ↖	10 16 ↖	10 15 ↖	10 15 ↖	10 16 ↖	10 16 ↖	12 17 ↖	13 18 ↖	13 18 ↖	13 20 ↖

**NOTE:** This is automated data that may/may not agree with the official BAM thinking that's found on the daily slides.  
This data should be used as a guide only.



# Houston Pilots: TUE. 4/22/2025

## Forecast Discussion

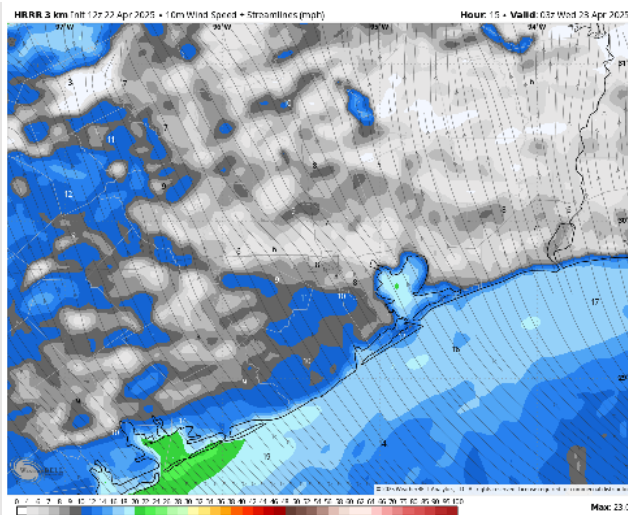
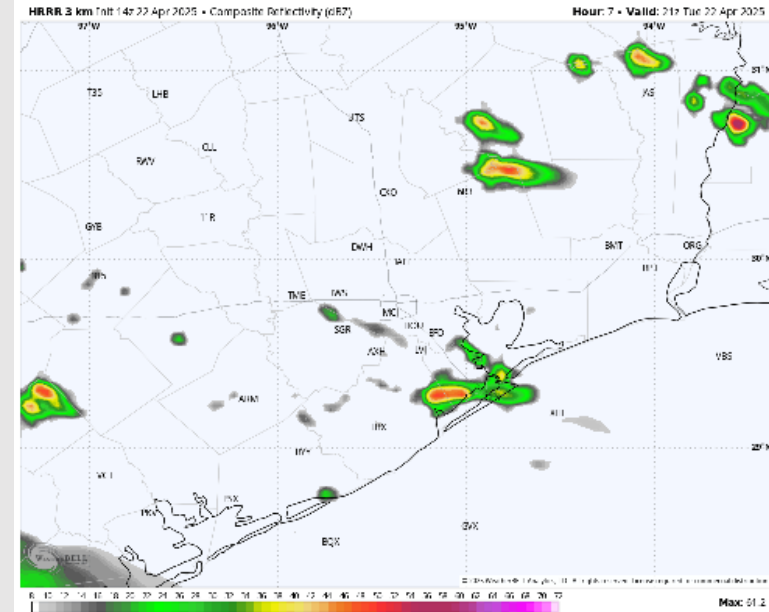
**Precip:** Isolated showers and a few storms will be possible through 4PM. **Lightning and wind gusts up to 35kts will be possible within storms.**

**Wind:** Winds will be out of the SE throughout the rest of the day. **N of Morgan's Point:** Winds will be at 3 – 8 kts throughout the remainder of the PM. **S of Morgan's Point:** Winds will be at 5 - 10 kts through 7 PM, increasing to 10 - 15 kts after that time.

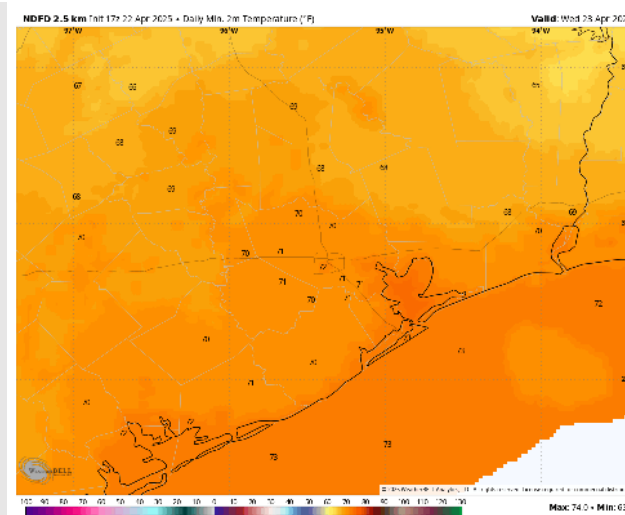
**Low Temps:** **N of Morgan's Point:** Near 70 F. **S of Morgan's Point:** Low 70s F.

**Visibility:** Not anticipating visibility concerns for the rest of today.

## Precip Image: 4 PM CT



**Wind Speed:**  
**10 PM CT**



**Low Temps**  
**WED AM**

# Houston Pilots: WED. 4/23/2025

## Forecast Discussion

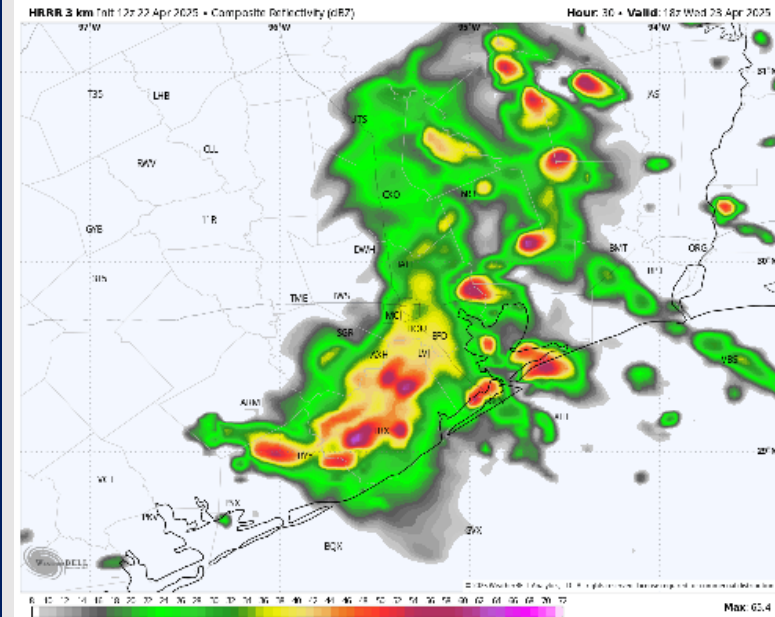
**Precip:** Scattered to widespread (70%) showers and storms in play for all Stations from 7 AM to 6 PM. Stronger storms will be possible from 11AM to 4PM. Main risks with storms will be lightning and gusts reaching 40 kts.

**Wind:** Winds will be out of the SE throughout Wednesday. N of Morgan's Point: Winds will be at 3 – 8 kts throughout Wednesday. S of Morgan's Point: Winds will be at 8 – 13 kts, increasing slightly to 11 – 16 kts from 3PM to 8PM. Non-thunderstorm wind gusts will briefly be able to reach 20 kts at times for all Stations after 11AM.

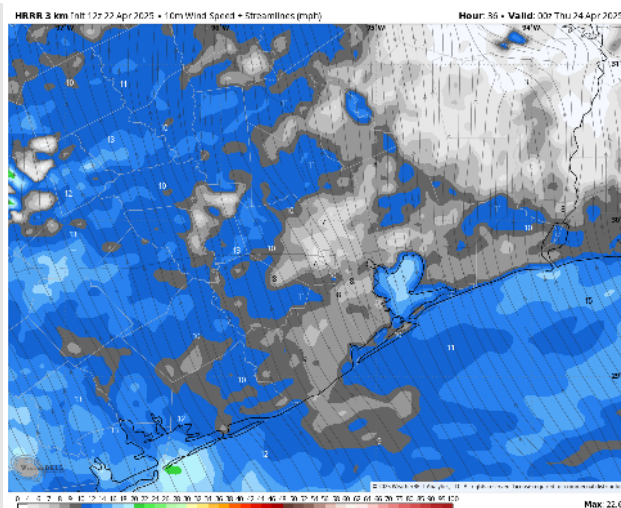
**High Temps:** N of Morgan's Point: Near 80 F. S of Morgan's Point: High 70s F.

**Visibility:** Not anticipating fog concerns for Wednesday, but visibilities can be reduced under heavy downpours.

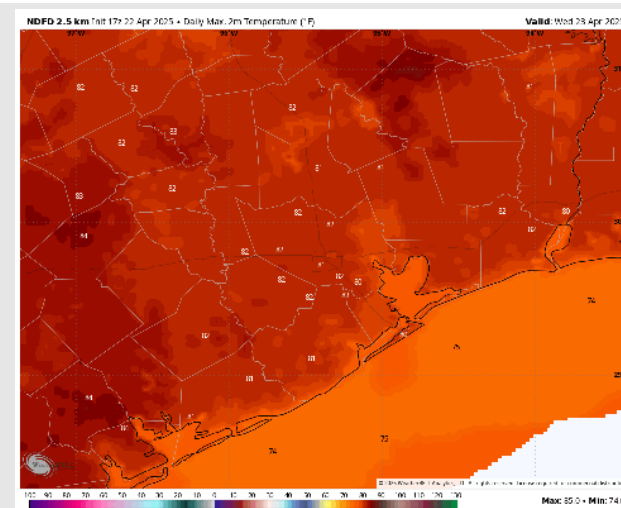
## Precip Image: 1 PM CT



Wind Speed:  
7 PM CT



High Temps  
Wednesday



# Houston Pilots: THU. 4/24/2025

## Forecast Discussion

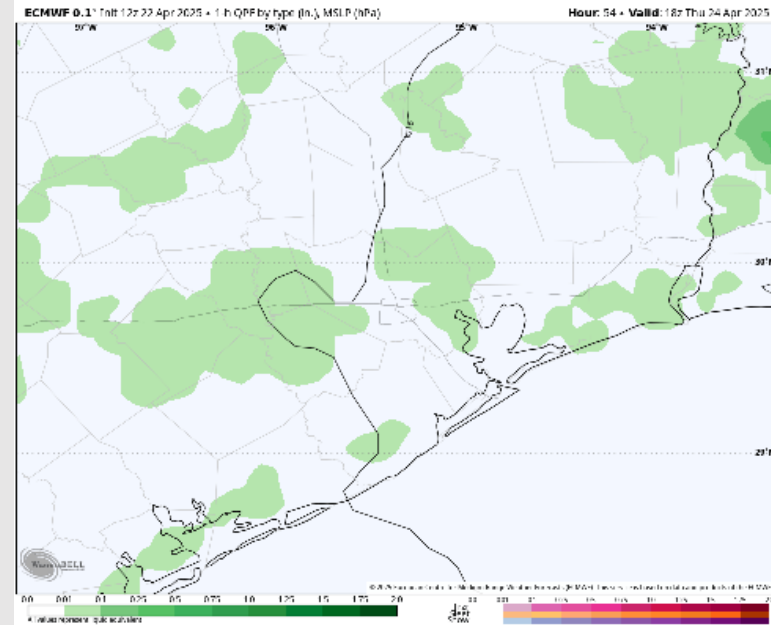
**Precip:** Hit/miss showers will be possible after 7AM. A few storms may be in play from 10AM to 2PM. Lightning will be prevalent within any storms.

**Wind:** Winds will be generally out of the SE. **N of Morgan's Point:** Winds will be at 3 – 8 kts throughout the day. **S of Morgan's Point:** Winds will be at 8– 13 kts for Thursday.

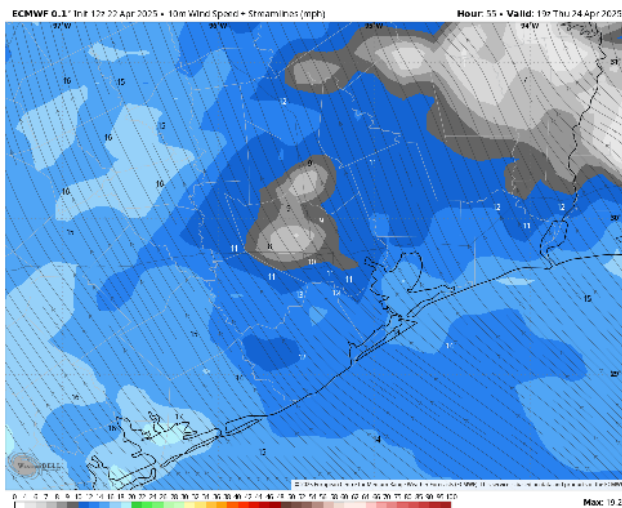
**High Temps:** **N of Morgan's Point:** Low 80s F. **S of Morgan's Point:** Mid 70s F.

**Visibility:** No fog concerns for Thursday, however, visibilities may be reduced under any heavy downpours.

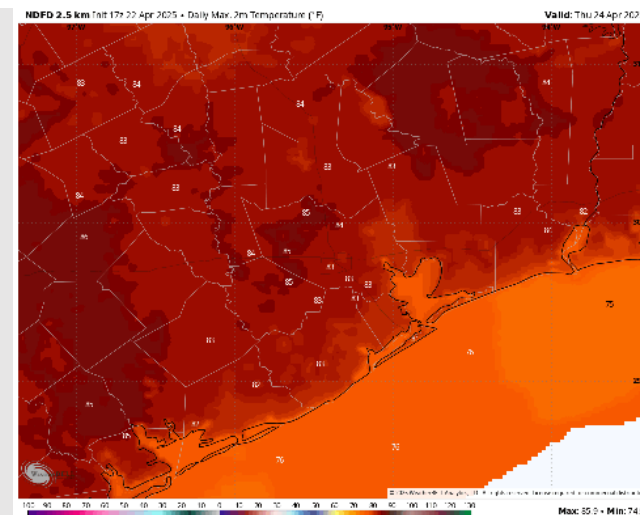
## Precip Image: 1 PM CT



Wind Speed  
2 PM CT



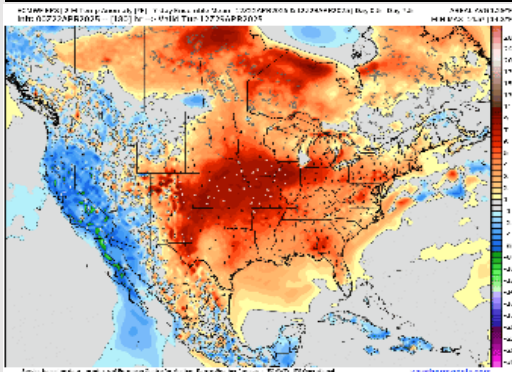
High Temps  
Thursday



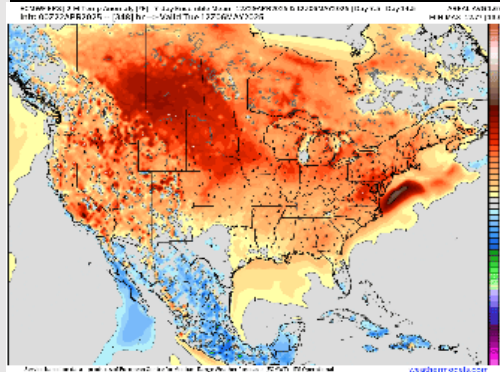


# Houston Pilots: 4/22/25

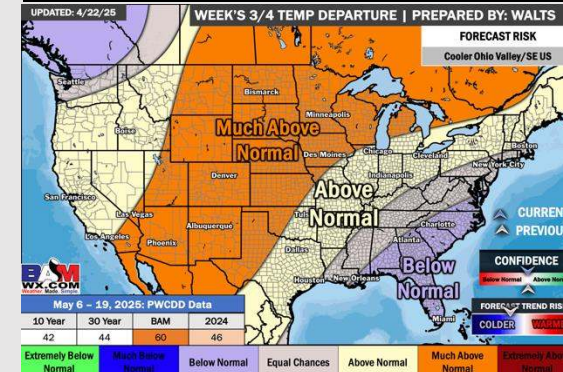
## Next 7 Day Temperature Departure



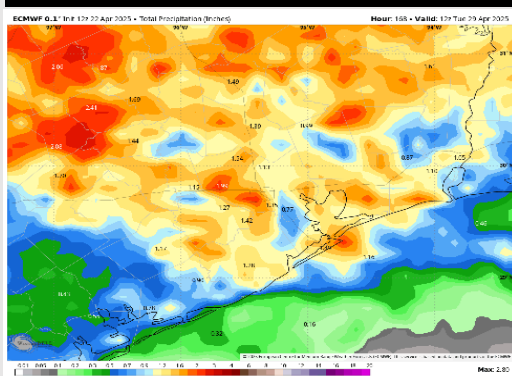
## 8-14 Day Temperature Departure



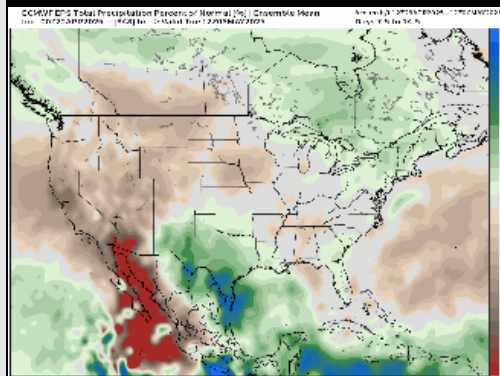
## 15-30 Day Temperature Departure



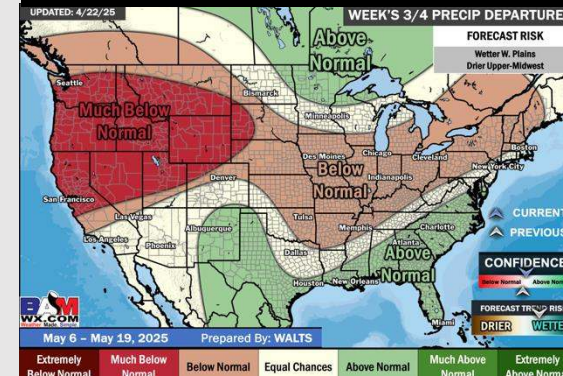
## Next 7 Day Total Precipitation



## 8-14 Day % of Average Precip.



## 15-30 Day % of Average Precip.



- Temps are expected to be above normal the next 7 days. Scattered rain showers expected throughout the week, becoming heavy at times.
- Above normal temps and above normal rainfall is favored 8 - 14 days from now.
- Near normal temperatures and above normal precipitation chances are favored for early to mid May.