

Houston Pilots Forecast Package

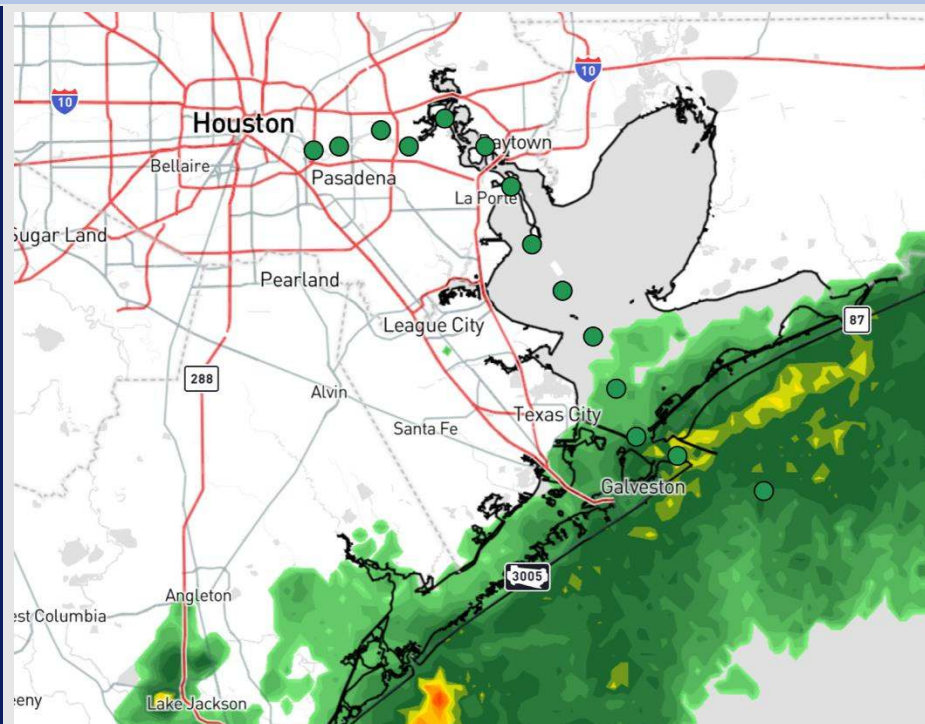


Updated: 12:45 PM CT
Monday, April 21, 2025

Forecaster: Hope Kleitsch

Weather Headlines

- Rain showers gradually work out of the area by later this afternoon.
- Showers and storms will be present Tuesday and Wednesday across all Stations.
- Non-thunderstorm winds pick back up for Stations S. of Morgan's Point WED PM.



Current Radar: 12:45 PM CT

As always, please do not hesitate to reach out to us with any forecast questions at **(317)-560-8122**. Press 1 for forecast questions.

You can also access real-time forecast updates and 24/7 meteorological chat assistance on your **Clarity** app. Click [here](#) for login assistance.



Houston Pilots Visibility Chart (miles)



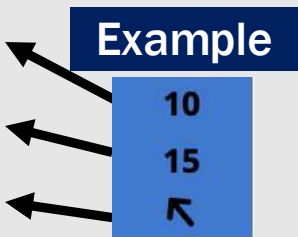
Visibility	Mon 2 pm	Mon 3 pm	Mon 4 pm	Mon 5 pm	Mon 6 pm	Mon 7 pm	Mon 8 pm	Mon 9 pm	Mon 10 pm	Mon 11 pm	Tue 12 am	Tue 1 am	Tue 2 am	Tue 3 am	Tue 4 am	Tue 5 am	Tue 6 am	Tue 7 am	Tue 8 am	Tue 9 am	Tue 10 am	Tue 11 am	Tue 12 pm	Tue 1 pm
Houston Pilots N - 610 Bridge	6.9	6.9	7.9	7.9	10	10	10	9	7.9	9	6.9	6.9	4.9	4.9	4.9	3.9	3.9	3.9	2.9	2.9	6.9	6.9	9	10
Houston Pilots M - Kinder 1	6.9	6.9	7.9	7.9	9	10	10	7.9	7.9	9	6.9	6.9	4.9	4.9	4.9	3.9	3.9	3.9	2.9	2.9	6.9	6.9	9	10
Houston Pilots L - Greens Bayou	6.9	6.9	7.9	7.9	9	10	10	7.9	7.9	7.9	6.9	6.9	4.9	4.9	4.9	3.9	3.9	3.9	2.9	2.9	6.9	6.9	9	10
Houston Pilots K - Shell Crude	6.9	6.9	6.9	6.9	9	9	10	7.9	7.9	7.9	6.9	6.9	4.9	4.9	4.9	3.9	3.9	3.9	2.9	2.9	5.9	6.9	7.9	10
Houston Pilots J - Lynchburg Ferries	6.9	6.9	6.9	7.9	9	10	10	9	7.9	9	6.9	6.9	4.9	4.9	4.9	3.9	3.9	3.9	2.9	2.9	6.9	6.9	9	10
Houston Pilots I - Exxon 3	6.9	6.9	6.9	6.9	9	9	9	7.9	7.9	7.9	6.9	6.9	4.9	4.9	4.9	3.9	3.9	3.9	2.9	2.9	5.9	6.9	7.9	10
Houston Pilots H - Morgans Point	5.9	6.9	6.9	6.9	9	9	9	6.9	6.9	6.9	6.9	5.9	4.9	4.9	4.9	3.9	3.9	3.9	2.9	2.9	5.9	6.9	7.9	10
Houston Pilots G - 75/76	3.9	4.9	5.9	5.9	6.9	6.9	6.9	6.9	6.9	6.9	6.9	5.9	4.9	4.9	4.9	3.9	3.9	3.9	3.9	2.9	4.9	5.9	6.9	8
Houston Pilots F - 63/64	3.9	4.9	5.9	5.9	6.9	6.9	6.9	6.9	6.9	6.9	6.9	5.9	4.9	4.9	4.9	3.9	3.9	4.9	3.9	2.9	4.9	5.9	6.9	8
Houston Pilots E - 51/52	3.9	3.9	5.9	5.9	6.9	6.9	6.9	6.9	6.9	6.9	6.9	5.9	4.9	4.9	4.9	4.9	4.9	4.9	4.9	3.9	4.9	5.9	6.9	6
Houston Pilots D - 37/38	3.9	3.9	4.9	5.9	6.9	6.9	6.9	6.9	6.9	6.9	6.9	5.9	4.9	4.9	4.9	4.9	4.9	4.9	4.9	3.9	4.9	5.9	6.9	5
Houston Pilots C - 25/26	4.9	3.9	4.9	5.9	6.9	6.9	7.9	6.9	6.9	6.9	6.9	6.9	5.9	5.9	4.9	4.9	4.9	4.9	4.9	3.9	4.9	5.9	6.9	5
Houston Pilots B - 11/12	4.9	3.9	4.9	5.9	6.9	6.9	7.9	6.9	6.9	6.9	6.9	6.9	5.9	5.9	4.9	4.9	4.9	5.9	4.9	3.9	4.9	5.9	6.9	5
Houston Pilots A - 1 & 2 Bravo	6.9	5.9	6.9	5.9	6.9	6.9	7.9	6.9	6.9	6.9	6.9	6.9	5.9	5.9	4.9	4.9	4.9	5.9	4.9	3.9	4.9	5.9	6.9	9

NOTE: This is automated data that may/may not agree with the official BAM thinking that's found on the daily slides or special visibility report slides. This data should be used as a guide only

Houston Pilots Wind Chart



Sustained Wind 10 Knots
Gusts 15 Knots
Wind from the SE



Wind	Mon 2 pm	Mon 3 pm	Mon 4 pm	Mon 5 pm	Mon 6 pm	Mon 7 pm	Mon 8 pm	Mon 9 pm	Mon 10 pm	Mon 11 pm	Tue 12 am	Tue 1 am	Tue 2 am	Tue 3 am	Tue 4 am	Tue 5 am	Tue 6 am	Tue 7 am	Tue 8 am	Tue 9 am	Tue 10 am	Tue 11 am	Tue 12 pm	Tue 1 pm
Houston Pilots N - 610 Bridge	6 12 ↖	6 10 ↖	6 10 ↖	6 12 ↖	6 12 ↖	6 12 ↖	6 12 ↖	6 10 ↖	5 9 ↖	5 9 ↖	3 9 ↖	3 8 ↖	3 8 ↖	3 7 ↖	3 7 ↖	3 7 ↖	3 7 ↖	3 6 ↖	3 6 ↖	3 7 ↖	5 9 ↖	6 10 ↖	6 12 ↖	7 14 ↖
Houston Pilots M - Kinder 1	6 12 ↖	6 10 ↖	6 10 ↖	6 12 ↖	6 12 ↖	6 12 ↖	6 12 ↖	6 10 ↖	5 9 ↖	5 9 ↖	3 9 ↖	3 8 ↖	3 8 ↖	3 7 ↖	3 7 ↖	3 7 ↖	3 7 ↖	3 6 ↖	3 6 ↖	3 7 ↖	5 9 ↖	6 10 ↖	6 12 ↖	7 14 ↖
Houston Pilots L - Greens Bayou	6 12 ↖	6 12 ↖	6 12 ↖	6 12 ↖	6 12 ↖	6 12 ↖	6 12 ↖	6 10 ↖	5 9 ↖	5 9 ↖	3 8 ↖	3 8 ↖	3 8 ↖	3 7 ↖	3 7 ↖	3 7 ↖	3 7 ↖	3 6 ↖	3 6 ↖	3 7 ↖	5 8 ↖	6 10 ↖	6 12 ↖	8 14 ↖
Houston Pilots K - Shell Crude	6 12 ↖	6 12 ↖	6 12 ↖	7 13 ↖	7 13 ↖	6 12 ↖	6 12 ↖	6 10 ↖	5 9 ↖	5 9 ↖	3 9 ↖	3 8 ↖	3 8 ↖	3 7 ↖	3 7 ↖	3 7 ↖	3 7 ↖	3 6 ↖	3 6 ↖	3 7 ↖	5 8 ↖	6 10 ↖	7 12 ↖	8 15 ↖
Houston Pilots J - Lynchburg Ferries	6 12 ↖	6 12 ↖	6 12 ↖	6 13 ↖	6 12 ↖	6 12 ↖	6 12 ↖	6 10 ↖	5 9 ↖	3 8 ↖	3 8 ↖	3 8 ↖	3 8 ↖	3 7 ↖	3 7 ↖	3 7 ↖	2 6 ↖	2 6 ↖	2 6 ↖	3 7 ↖	3 8 ↖	6 10 ↖	7 12 ↖	8 15 ↖
Houston Pilots I - Exxon 3	7 13 ↖	8 13 ↖	8 13 ↖	8 14 ↖	8 14 ↖	8 13 ↖	8 13 ↖	8 12 ↖	7 10 ↖	6 10 ↖	6 9 ↖	6 9 ↖	6 9 ↖	6 8 ↖	5 8 ↖	5 7 ↖	5 7 ↖	5 7 ↖	5 7 ↖	6 8 ↖	6 10 ↖	7 12 ↖	8 13 ↖	8 15 ↖
Houston Pilots H - Morgans Point	8 13 ↖	8 14 ↖	8 14 ↖	8 14 ↖	8 14 ↖	8 13 ↖	8 13 ↖	8 12 ↖	7 10 ↖	6 10 ↖	6 9 ↖	6 9 ↖	6 9 ↖	6 8 ↖	6 8 ↖	5 8 ↖	5 7 ↖	5 7 ↖	5 7 ↖	6 8 ↖	6 10 ↖	7 12 ↖	8 13 ↖	8 15 ↖
Houston Pilots G - 75/76	8 14 ↖	8 15 ↖	8 15 ↖	9 15 ↖	9 15 ↖	9 14 ↖	9 14 ↖	8 13 ↖	8 12 ↖	8 12 ↖	8 10 ↖	7 10 ↖	7 10 ↖	7 10 ↖	6 9 ↖	6 9 ↖	6 9 ↖	6 9 ↖	6 9 ↖	6 10 ↖	7 12 ↖	8 13 ↖	8 14 ↖	9 16 ↖
Houston Pilots F - 63/64	8 14 ↖	8 15 ↖	8 15 ↖	8 15 ↖	9 15 ↖	9 14 ↖	9 14 ↖	8 13 ↖	8 12 ↖	8 13 ↖	8 10 ↖	8 10 ↖	8 10 ↖	7 10 ↖	7 9 ↖	6 9 ↖	6 9 ↖	6 9 ↖	6 9 ↖	7 10 ↖	8 12 ↖	8 13 ↖	9 14 ↖	10 16 ↖
Houston Pilots E - 51/52	8 14 ↖	8 15 ↖	8 15 ↖	8 15 ↖	8 15 ↖	9 14 ↖	9 13 ↖	8 13 ↖	8 12 ↖	8 13 ↖	8 12 ↖	8 10 ↖	8 12 ↖	7 10 ↖	7 10 ↖	7 10 ↖	6 9 ↖	6 9 ↖	6 9 ↖	7 10 ↖	8 12 ↖	8 13 ↖	9 15 ↖	10 16 ↖
Houston Pilots D - 37/38	8 14 ↖	8 15 ↖	8 15 ↖	8 15 ↖	8 14 ↖	8 13 ↖	8 13 ↖	8 13 ↖	8 12 ↖	8 12 ↖	8 10 ↖	8 10 ↖	8 12 ↖	7 10 ↖	7 10 ↖	7 10 ↖	6 9 ↖	6 9 ↖	6 9 ↖	7 10 ↖	8 12 ↖	8 13 ↖	9 15 ↖	10 16 ↖
Houston Pilots C - 25/26	8 14 ↖	8 14 ↖	8 14 ↖	8 14 ↖	8 14 ↖	8 13 ↖	8 13 ↖	8 12 ↖	7 10 ↖	7 12 ↖	7 10 ↖	7 10 ↖	7 12 ↖	7 10 ↖	7 10 ↖	7 10 ↖	6 9 ↖	6 9 ↖	6 9 ↖	7 10 ↖	8 12 ↖	8 13 ↖	9 14 ↖	10 16 ↖
Houston Pilots B - 11/12	8 13 ↖	8 13 ↖	8 13 ↖	8 13 ↖	8 12 ↖	8 12 ↖	7 12 ↖	7 12 ↖	7 12 ↖	7 12 ↖	7 10 ↖	7 10 ↖	7 10 ↖	6 10 ↖	6 10 ↖	6 10 ↖	6 9 ↖	6 9 ↖	6 9 ↖	6 10 ↖	7 12 ↖	8 13 ↖	8 14 ↖	9 15 ↖
Houston Pilots A - 1 & 2 Bravo	8 13 ↖	8 13 ↖	7 12 ↖	8 12 ↖	8 12 ↖	8 12 ↖	8 13 ↖	8 13 ↖	8 12 ↖	8 13 ↖	8 12 ↖	8 12 ↖	8 12 ↖	8 13 ↖	8 12 ↖	8 12 ↖	8 10 ↖	7 12 ↖	7 12 ↖	8 12 ↖	8 13 ↖	8 13 ↖	8 14 ↖	9 15 ↖

NOTE: This is automated data that may/may not agree with the official BAM thinking that's found on the daily slides.
This data should be used as a guide only.

Houston Pilots: MON. 4/21/2025

Forecast Discussion

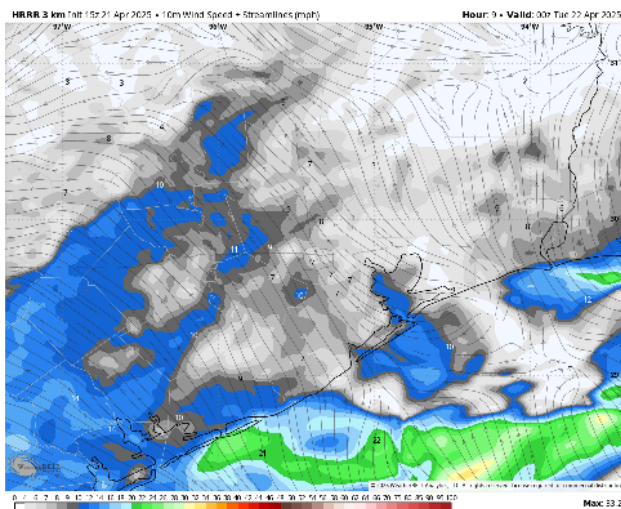
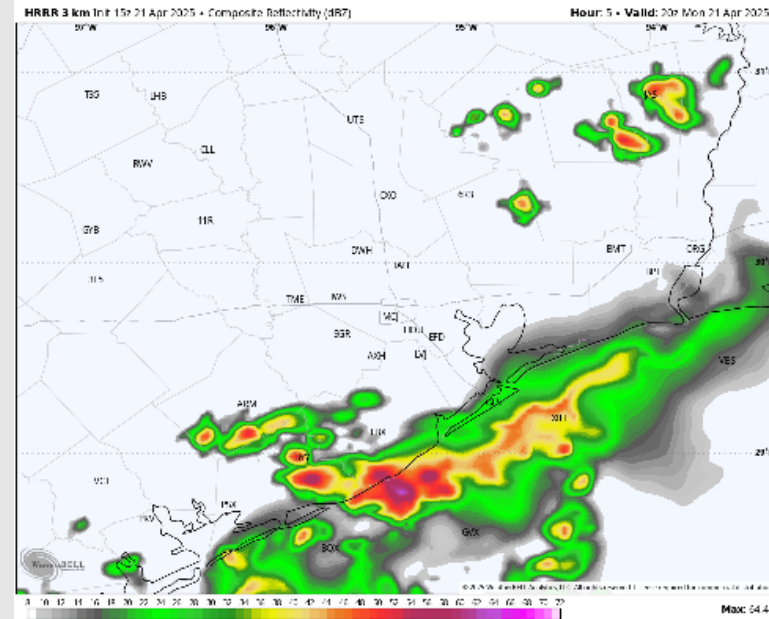
Precip: Rain showers will continue to impact Stations south of Station 63/64, gradually moving south and clearing all Stations by 2PM.

Wind: Winds will be generally out of the SE, becoming variable at times. **N of Morgan's Point:** Winds will be at 3 – 8 kts for the rest of the day. **S of Morgan's Point:** Winds will be at 6 – 11 kts for the remainder of the day.

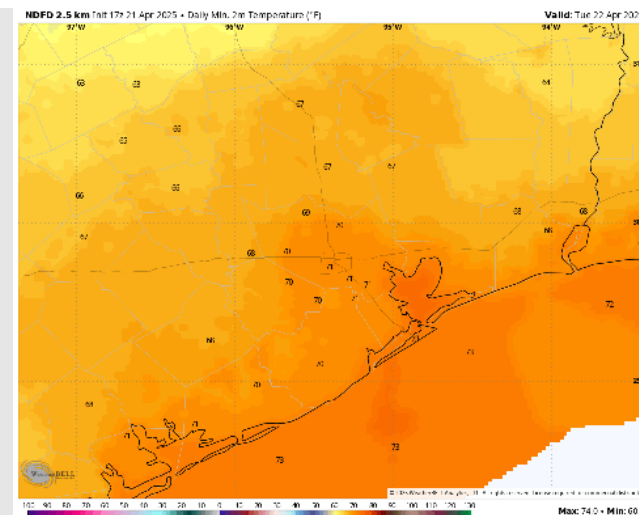
Low Temps: **N of Morgan's Point:** Near 70 F. **S of Morgan's Point:** Low 70s F.

Visibility: No fog concerns for the remainder of the day.

Precip Image: 3 PM CT



Wind Speed
7 PM CT



Low Temps
TUE AM

Houston Pilots: TUE. 4/22/2025

Forecast Discussion

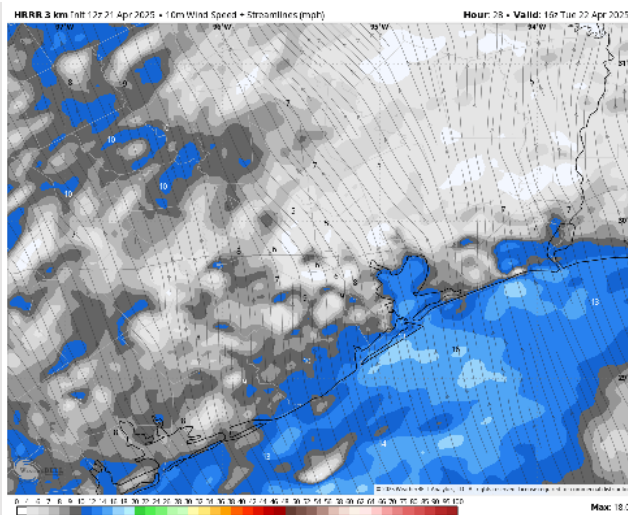
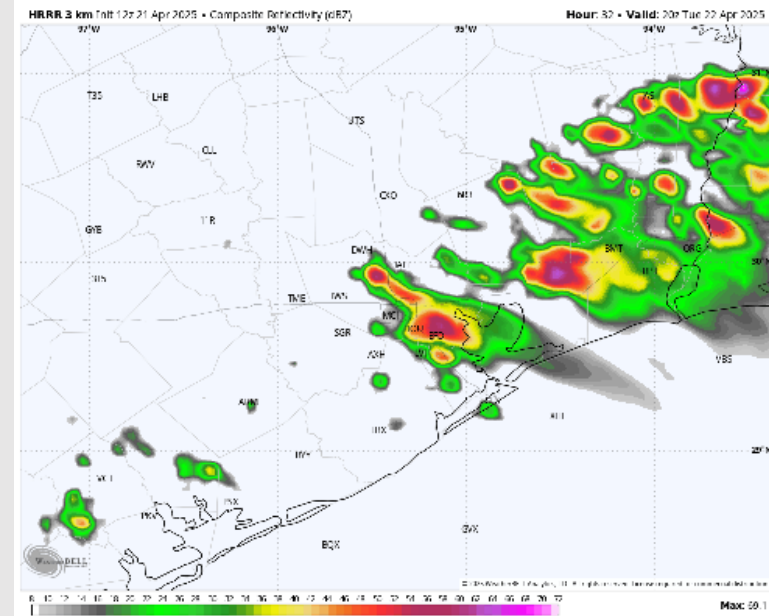
Precip: Scattered showers (30%) in play for all Stations from 7AM to 8 PM. A few storms will be possible from 12PM – 5PM. **Lightning and wind gusts up to 40kts will be possible within storms.**

Wind: Winds will be out of the SE throughout the day. **N of Morgan's Point:** Winds will be at 3 – 8 kts throughout Tuesday. **S of Morgan's Point:** Winds will be at 5 - 10 kts through 6 PM, increasing to 10 - 15 kts after that time.

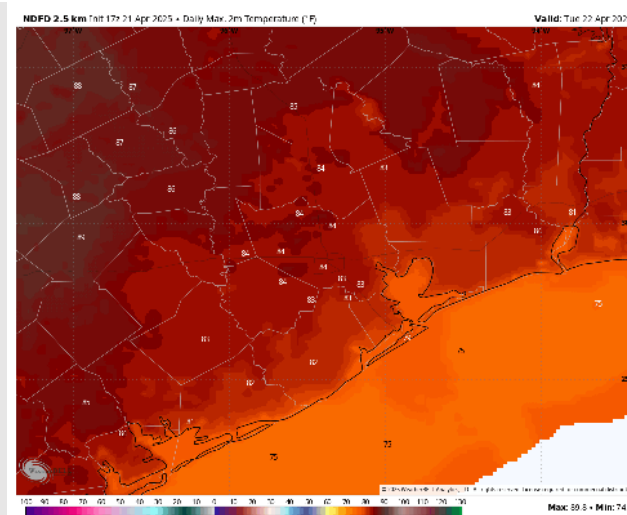
High Temps: **N of Morgan's Point:** Low 80s F. **S of Morgan's Point:** Near 80 F.

Visibility: Not anticipating visibility concerns for Tuesday.

Precip Image: 3 PM CT



Wind Speed:
11 AM CT



High Temps
Tuesday

Houston Pilots: WED. 4/23/2025

Forecast Discussion

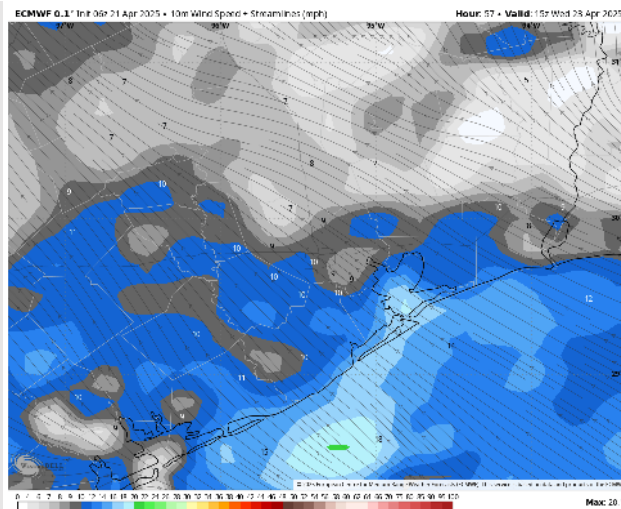
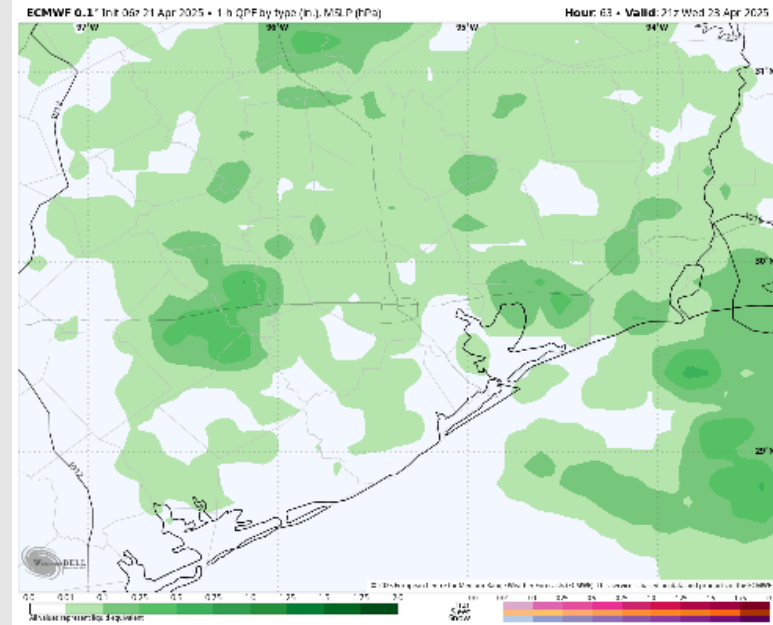
Precip: Scattered to widespread (70%) showers and storms in play for all Stations from 6 AM to 6 PM. **Main risks with storms will be lightning and gusts reaching 30 kts.**

Wind: Winds will be out of the S/SE throughout Wednesday. **N of Morgan's Point:** Winds will be at 3 – 8 kts throughout Wednesday. **S of Morgan's Point:** Winds will be at 8 – 13 kts, increasing slightly to 11 – 16 kts after 10AM. **Non-thunderstorm wind gusts will briefly be able to reach 20 kts at times for all Stations after 10AM.**

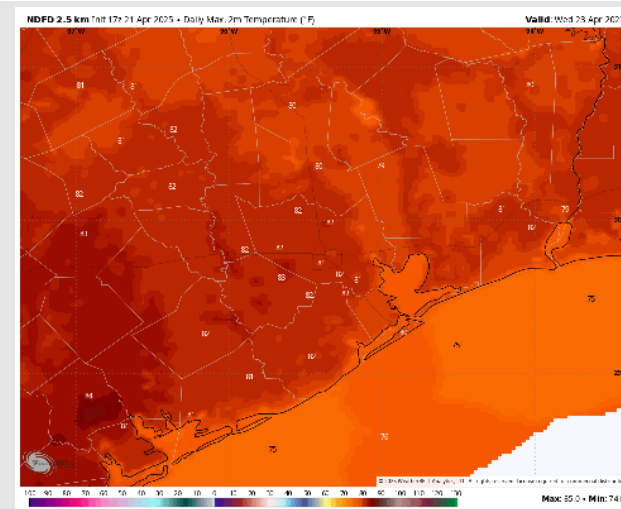
High Temps: **N of Morgan's Point:** Near 80 F. **S of Morgan's Point:** High 70s F.

Visibility: Not anticipating fog concerns for Wednesday, but visibilities can be reduced under heavy downpours.

Precip Image: 4 PM CT



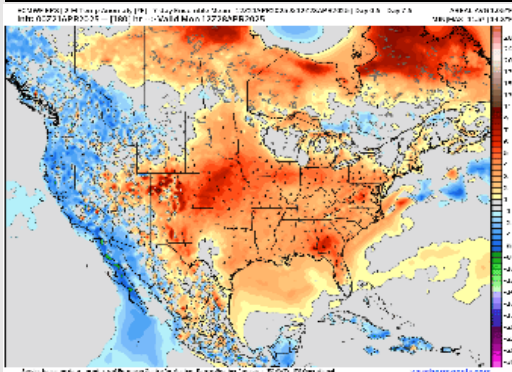
Wind Speed:
10 AM CT



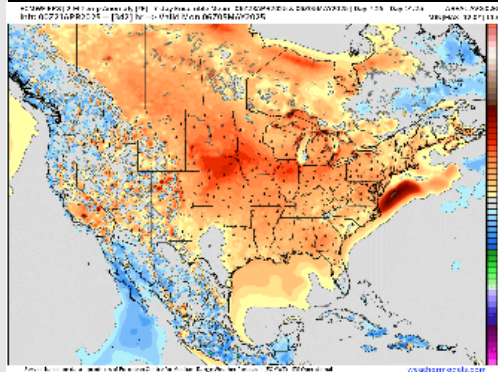
High Temps
Wednesday

Houston Pilots: 4/21/25

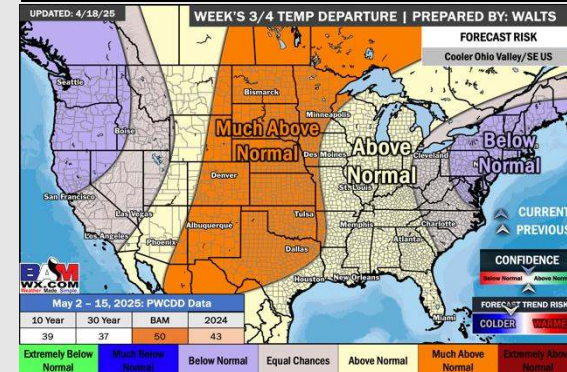
Next 7 Day Temperature Departure



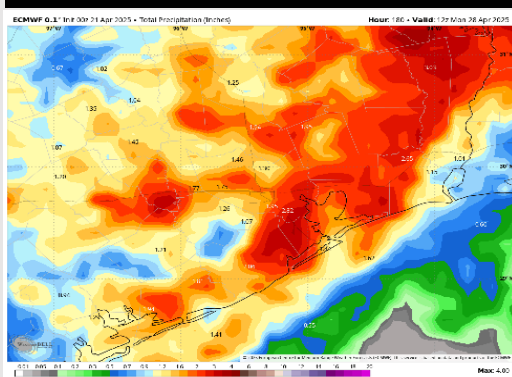
8-14 Day Temperature Departure



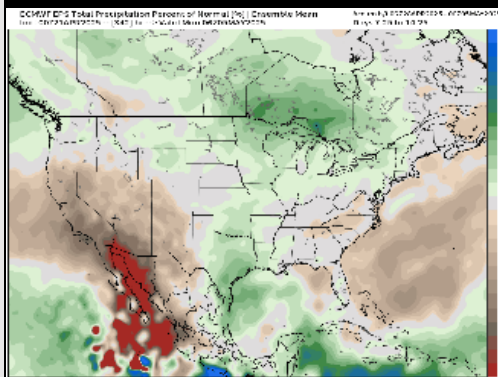
15-30 Day Temperature Departure



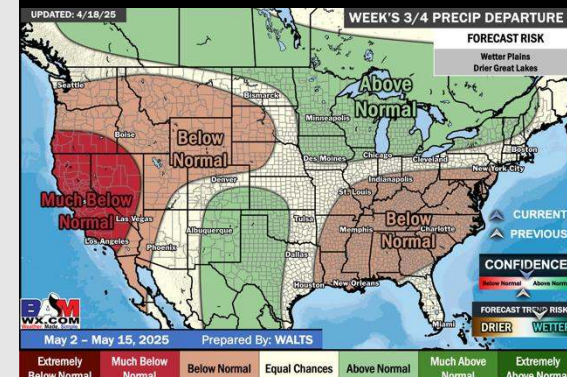
Next 7 Day Total Precipitation



8-14 Day % of Average Precip.



15-30 Day % of Average Precip.



- Temps are expected to be above normal the next 7 days. Scattered rain showers expected throughout the week, becoming heavy at times.
- Above normal temps and above normal rainfall is favored 8 - 14 days from now.
- Above normal temperatures and near to slightly below normal precipitation chances are favored for early May.