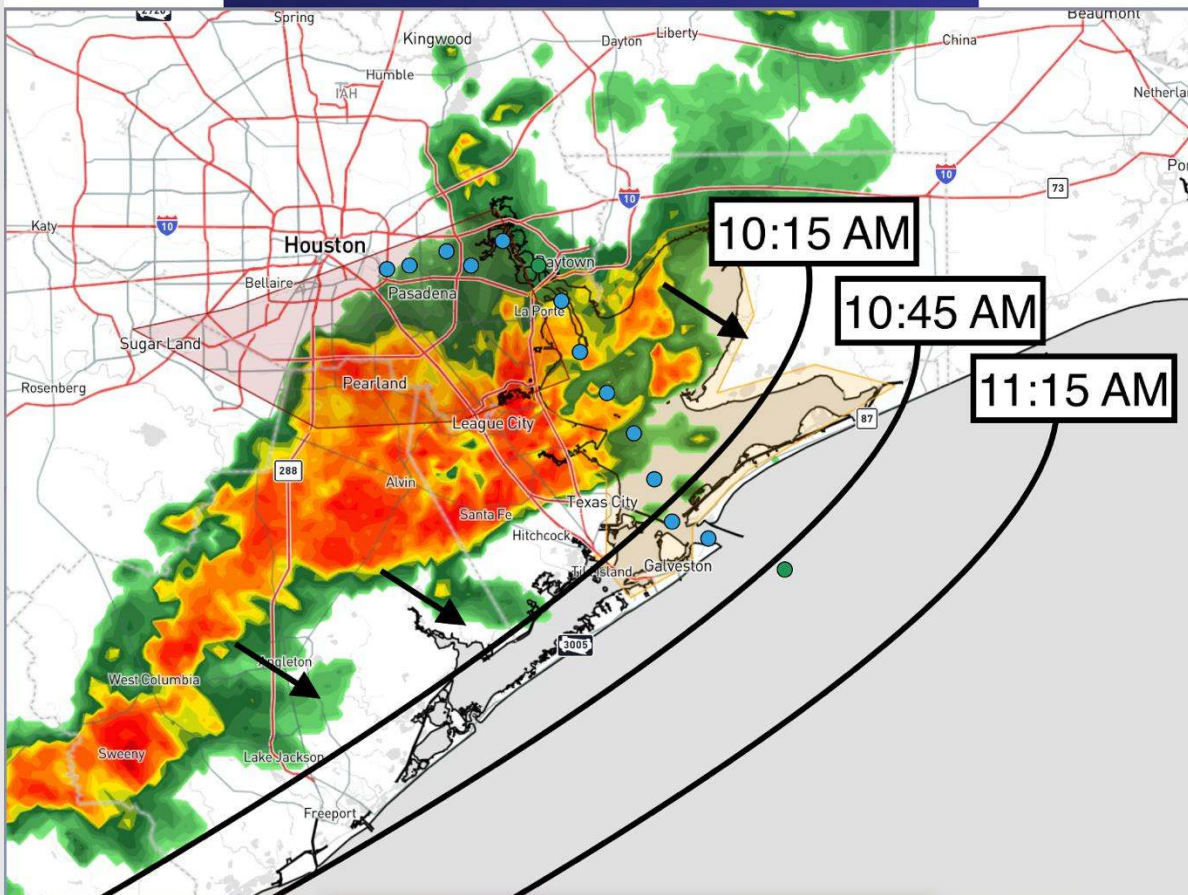




Arrival Time of Stronger Storms

Current: 9:50 AM CT 4/21/25

Forecaster: Kipper



FORECAST NOTES:

- ✓ Main risks on arrival: 35-40 kt winds and small hail



Houston Pilots Forecast Package

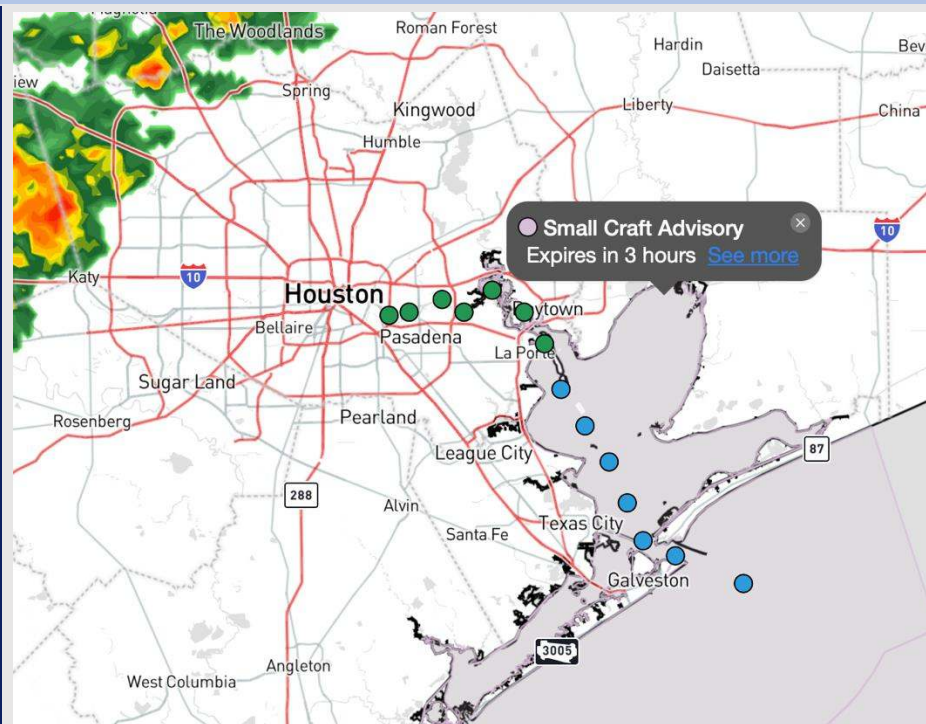


Updated: 10:00 PM CT
Monday, April 21, 2025

Forecaster: Tyler Riggles

Weather Headlines

- Choppy waters with wave heights of 4 – 5' will still be present at the Boarding Station through the AM.
- Showers and storms will be possible through much of the day today, with additional storm risks on Wednesday.
- Non-thunderstorm winds will be generally calmer (<15 kts) over the next 72 hours



Current Radar: 9:57 PM CT

As always, please do not hesitate to reach out to us with any forecast questions at (317)-560-8122. Press 1 for forecast questions.

You can also access real-time forecast updates and 24/7 meteorological chat assistance on your [Clarity](#) app. Click [here](#) for login assistance.



Houston Pilots Visibility Chart (miles)



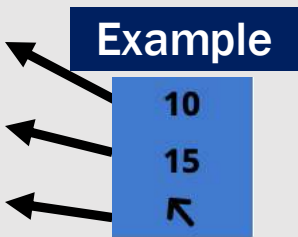
Visibility	Sun 11 pm	Mon 12 am	Mon 1 am	Mon 2 am	Mon 3 am	Mon 4 am	Mon 5 am	Mon 6 am	Mon 7 am	Mon 8 am	Mon 9 am	Mon 10 am	Mon 11 am	Mon 12 pm	Mon 1 pm	Mon 2 pm	Mon 3 pm	Mon 4 pm	Mon 5 pm	Mon 6 pm	Mon 7 pm	Mon 8 pm	Mon 9 pm	Mon 10 pm
Houston Pilots N - 610 Bridge	5.9	5.9	5.9	4.9	5.9	5.9	5.9	6.9	6.9	4.9	4.9	4.9	5.9	5.9	5.9	5.9	5.9	5.9	5.9	5.9	5.9	5.9	5.9	6.9
Houston Pilots M - Kinder 1	6.9	5.9	5.9	4.9	5.9	6.9	5.9	6.9	6.9	4.9	4.9	4.9	5.9	5.9	5.9	5.9	6.9	5.9	5.9	5.9	5.9	5.9	5.9	6.9
Houston Pilots L - Greens Bayou	6.9	6.9	6.9	5.9	6.9	6.9	6.9	6.9	6.9	6.9	4.9	5.9	5.9	6.9	6.9	6.9	6.9	6.9	5.9	5.9	5.9	5.9	5.9	6.9
Houston Pilots K - Shell Crude	6.9	6.9	6.9	5.9	6.9	6.9	6.9	6.9	6.9	6.9	4.9	5.9	6.9	6.9	6.9	6.9	6.9	6.9	5.9	5.9	5.9	5.9	5.9	6.9
Houston Pilots J - Lynchburg Ferries	6.9	6.9	6.9	6.9	6.9	6.9	6.9	6.9	6.9	6.9	5.9	6.9	6.9	6.9	6.9	6.9	6.9	6.9	5.9	5.9	5.9	6.9	6.9	7.9
Houston Pilots I - Exxon 3	7.9	6.9	6.9	6.9	6.9	6.9	6.9	7.9	6.9	6.9	5.9	6.9	6.9	6.9	6.9	6.9	6.9	6.9	5.9	5.9	5.9	5.9	5.9	7.9
Houston Pilots H - Morgans Point	7.9	7.9	6.9	6.9	6.9	6.9	6.9	6.9	6.9	6.9	5.9	6.9	6.9	6.9	6.9	6.9	6.9	6.9	5.9	5.9	5.9	5.9	5.9	7.9
Houston Pilots G - 75/76	5.9	5.9	5.9	5.9	5.9	5.9	5.9	5.9	5.9	4.9	4.9	5.9	5.9	5.9	6.9	6.9	6.9	5.9	4.9	5.9	5.9	4.9	9	9
Houston Pilots F - 63/64	5.9	5.9	5.9	5.9	5.9	5.9	5.9	5.9	5.9	4.9	4.9	5.9	5.9	5.9	6.9	6.9	6.9	5.9	4.9	5.9	5.9	4.9	9	9
Houston Pilots E - 51/52	5.9	5.9	5.9	5.9	5.9	5.9	4.9	5.9	5.9	4.9	4.9	5.9	5.9	6.9	6.9	6.9	6.9	5.9	4.9	4.9	4.9	4.9	9	9
Houston Pilots D - 37/38	5.9	5.9	5.9	5.9	5.9	5.9	4.9	5.9	5.9	4.9	4.9	5.9	5.9	6.9	6.9	6.9	6.9	5.9	4.9	4.9	4.9	4.9	9	9
Houston Pilots C - 25/26	5.9	5.9	5.9	5.9	5.9	5.9	5.9	5.9	5.9	4.9	4.9	5.9	5.9	6.9	6.9	6.9	6.9	5.9	4.9	4.9	4.9	4.9	9	9
Houston Pilots B - 11/12	5.9	5.9	4.9	4.9	4.9	4.9	4.9	4.9	5.9	4.9	4.9	5.9	5.9	6.9	6.9	6.9	6.9	5.9	4.9	4.9	4.9	4.9	9	9
Houston Pilots A - 1 & 2 Bravo	4.9	4.9	4.9	4.9	4.9	4.9	4.9	4.9	4.9	3.9	3.9	5.9	5.9	6.9	6.9	6.9	5.9	4.9	3.9	3.9	4.9	4.9	8	8

NOTE: This is automated data that may/may not agree with the official BAM thinking that's found on the daily slides or special visibility report slides. This data should be used as a guide only

Houston Pilots Wind Chart



Sustained Wind 10 Knots
Gusts 15 Knots
Wind from the SE



Wind	Sun 11 pm	Mon 12 am	Mon 1 am	Mon 2 am	Mon 3 am	Mon 4 am	Mon 5 am	Mon 6 am	Mon 7 am	Mon 8 am	Mon 9 am	Mon 10 am	Mon 11 am	Mon 12 pm	Mon 1 pm	Mon 2 pm	Mon 3 pm	Mon 4 pm	Mon 5 pm	Mon 6 pm	Mon 7 pm	Mon 8 pm	Mon 9 pm	Mon 10 pm
Houston Pilots N - 610 Bridge	7 15 ↑	6 13 ↑	6 10 ↑	5 9 ↑	3 8 ↑	3 7 ↑	3 7 ↑	3 7 ↑	3 7 ↑	3 7 ↖	3 7 ↖	3 8 ↖	5 8 ↖	5 9 ↖	6 9 ↖	6 10 ↖	6 10 ↖	6 10 ↖	6 12 ↖	6 12 ↖	6 12 ↖	6 13 ↖	6 12 ↖	6 9 ↖
Houston Pilots M - Kinder 1	7 15 ↑	6 13 ↑	6 10 ↑	5 9 ↑	3 8 ↑	3 7 ↑	3 7 ↑	3 7 ↑	3 7 ↖	3 7 ↖	3 7 ↖	3 8 ↖	5 8 ↖	5 9 ↖	6 9 ↖	6 10 ↖	6 10 ↖	6 10 ↖	6 12 ↖	6 13 ↖	6 12 ↖	6 13 ↖	6 12 ↖	6 9 ↖
Houston Pilots L - Greens Bayou	7 15 ↑	6 13 ↑	6 10 ↑	5 9 ↑	3 8 ↑	3 7 ↑	3 7 ↑	3 7 ↑	3 7 ↖	3 7 ↖	3 7 ↖	3 8 ↖	5 8 ↖	5 9 ↖	6 10 ↖	6 12 ↖	6 12 ↖	6 12 ↖	6 12 ↖	6 13 ↖	6 12 ↖	6 12 ↖	6 10 ↖	6 9 ↖
Houston Pilots K - Shell Crude	7 15 ↑	6 13 ↑	6 10 ↑	5 9 ↑	3 8 ↑	3 7 ↑	3 7 ↑	3 7 ↑	3 7 ↖	3 7 ↖	3 7 ↖	3 8 ↖	5 8 ↖	5 9 ↖	6 10 ↖	6 12 ↖	6 12 ↖	6 12 ↖	6 12 ↖	6 13 ↖	6 12 ↖	6 12 ↖	6 10 ↖	6 9 ↖
Houston Pilots J - Lynchburg Ferries	7 15 ↑	6 13 ↑	6 10 ↑	5 9 ↑	3 8 ↑	3 7 ↑	3 7 ↑	3 7 ↑	3 7 ↖	3 7 ↖	3 7 ↖	3 8 ↖	5 8 ↖	5 9 ↖	6 10 ↖	6 12 ↖	6 10 ↖	6 12 ↖	6 12 ↖	6 13 ↖	6 12 ↖	6 12 ↖	6 10 ↖	6 9 ↖
Houston Pilots I - Exxon 3	10 16 ↑	9 14 ↑	8 13 ↑	7 12 ↑	6 9 ↑	6 8 ↑	5 8 ↑	5 7 ↑	5 7 ↖	5 8 ↖	5 8 ↖	6 8 ↖	6 9 ↖	6 9 ↖	6 10 ↖	6 12 ↖	6 12 ↖	7 13 ↖	8 13 ↖	8 13 ↖	8 13 ↖	8 13 ↖	8 13 ↖	7 10 ↖
Houston Pilots H - Morgans Point	10 16 ↑	9 15 ↑	8 13 ↑	7 12 ↑	6 9 ↑	6 8 ↑	5 8 ↑	5 7 ↑	5 7 ↖	5 8 ↖	5 8 ↖	6 8 ↖	6 9 ↖	6 9 ↖	6 12 ↖	6 13 ↖	6 13 ↖	7 13 ↖	8 14 ↖	8 13 ↖	8 13 ↖	8 13 ↖	8 13 ↖	7 10 ↖
Houston Pilots G - 75/76	13 18 ↑	10 16 ↑	9 15 ↑	8 14 ↑	8 12 ↑	7 10 ↑	6 9 ↑	6 9 ↑	6 9 ↑	6 9 ↑	6 9 ↑	6 10 ↑	7 10 ↑	7 10 ↑	7 13 ↑	8 13 ↑	8 14 ↑	8 15 ↑	8 15 ↑	9 14 ↑	9 14 ↑	9 14 ↑	8 13 ↑	8 12 ↑
Houston Pilots F - 63/64	13 18 ↑	10 17 ↑	10 15 ↑	8 14 ↑	8 13 ↑	7 12 ↑	7 10 ↑	6 9 ↑	6 9 ↑	6 9 ↑	6 9 ↑	7 10 ↑	7 10 ↑	7 12 ↑	8 13 ↑	8 13 ↑	8 14 ↑	8 14 ↑	8 15 ↑	9 14 ↑	9 14 ↑	9 14 ↑	8 13 ↑	8 13 ↑
Houston Pilots E - 51/52	13 18 ↑	12 17 ↑	10 15 ↑	9 14 ↑	8 13 ↑	8 12 ↑	7 10 ↑	7 10 ↑	7 10 ↑	7 10 ↑	7 10 ↑	8 12 ↑	8 12 ↑	8 12 ↑	8 13 ↑	8 14 ↑	8 14 ↑	8 15 ↑	8 15 ↑	8 14 ↑	8 14 ↑	9 13 ↑	8 13 ↑	8 13 ↑
Houston Pilots D - 37/38	13 18 ↑	10 17 ↑	10 15 ↑	9 14 ↑	8 13 ↑	8 12 ↑	8 12 ↑	7 10 ↑	7 10 ↑	7 10 ↑	7 10 ↑	8 12 ↑	8 12 ↑	8 12 ↑	8 13 ↑	8 14 ↑	8 14 ↑	8 14 ↑	8 14 ↑	8 14 ↑	8 13 ↑	8 13 ↑	8 13 ↑	8 12 ↑
Houston Pilots C - 25/26	12 18 ↑	10 17 ↑	10 16 ↑	9 15 ↑	8 13 ↑	8 12 ↑	8 12 ↑	7 10 ↑	7 10 ↑	7 10 ↑	7 10 ↑	8 12 ↑	8 12 ↑	8 12 ↑	8 13 ↑	8 13 ↑	8 14 ↑	8 14 ↑	8 14 ↑	8 13 ↑	8 13 ↑	8 13 ↑	8 13 ↑	8 12 ↑
Houston Pilots B - 11/12	10 17 ↑	10 16 ↑	9 15 ↑	8 14 ↑	8 13 ↑	7 12 ↑	7 12 ↑	7 10 ↑	6 10 ↑	7 10 ↑	7 10 ↑	7 10 ↑	7 10 ↑	8 12 ↑	8 13 ↑	8 13 ↑	8 13 ↑	8 13 ↑	8 13 ↑	8 13 ↑	8 12 ↑	8 12 ↑	8 12 ↑	8 12 ↑
Houston Pilots A - 1 & 2 Bravo	13 20 ↑	12 18 ↑	10 17 ↑	10 15 ↑	9 15 ↑	9 14 ↑	8 13 ↑	8 13 ↑	8 13 ↑	8 13 ↑	8 13 ↑	8 13 ↑	8 12 ↑	8 12 ↑	8 13 ↑	8 13 ↑	7 12 ↑	7 12 ↑	7 12 ↑	8 13 ↑	8 12 ↑	8 13 ↑	8 13 ↑	8 13 ↑

NOTE: This is automated data that may/may not agree with the official BAM thinking that's found on the daily slides.
This data should be used as a guide only.

Houston Pilots: MON. 4/21/2025

Forecast Discussion

Precip: Scattered showers and storms (40%) from 12 AM through 5 PM. The best timeframe for storms will be from 7AM to 1PM.

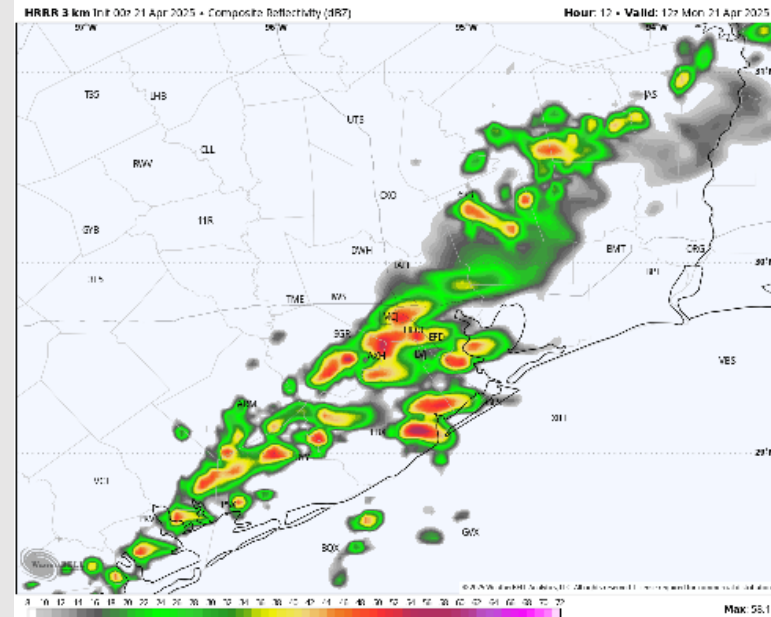
Lightning and brief wind gusts of 30 kts will be possible with storms.

Wind: Winds will be out of the S through 5 AM before becoming variable. Winds then settle out of the SSE by 4 PM. **N of Morgan's Point:** Winds will be at 3 – 8 kts throughout the day. **S of Morgan's Point:** Winds will be at 6 – 11 kts throughout the day.

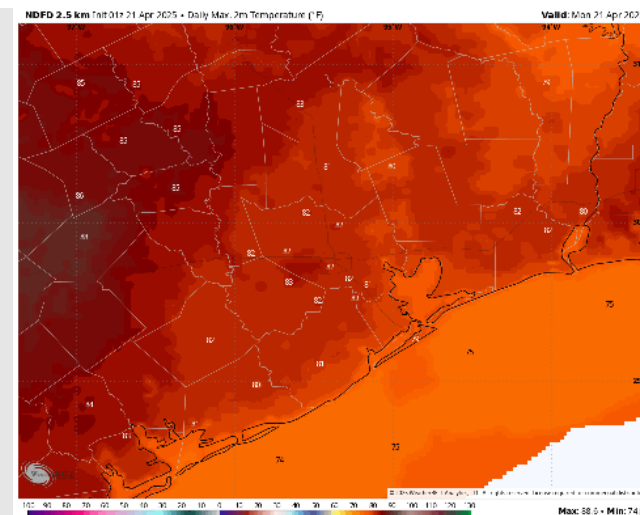
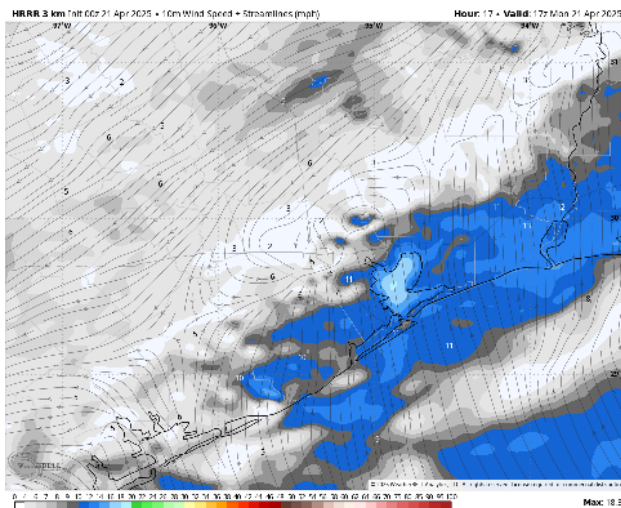
High Temps: **N of Morgan's Point:** Near 80 F. **S of Morgan's Point:** Upper 70sF.

Visibility: No fog concerns for today, however visibilities may be reduced under downpours.

Precip Image: 7 AM CT



Wind Speed
12 PM CT



High Temps
Today

Houston Pilots: TUE. 4/22/2025

Forecast Discussion

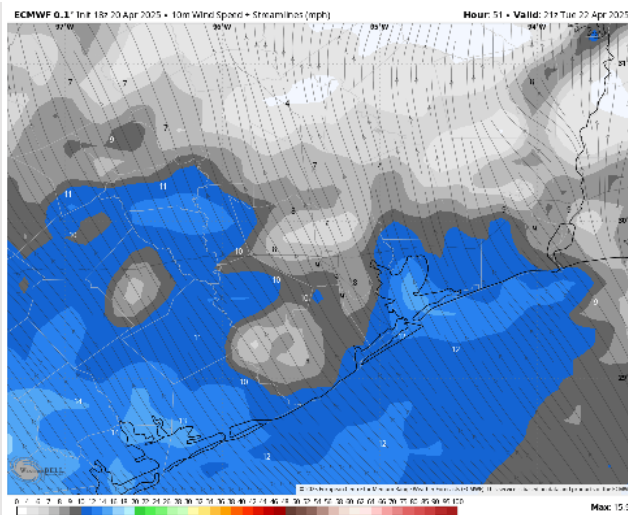
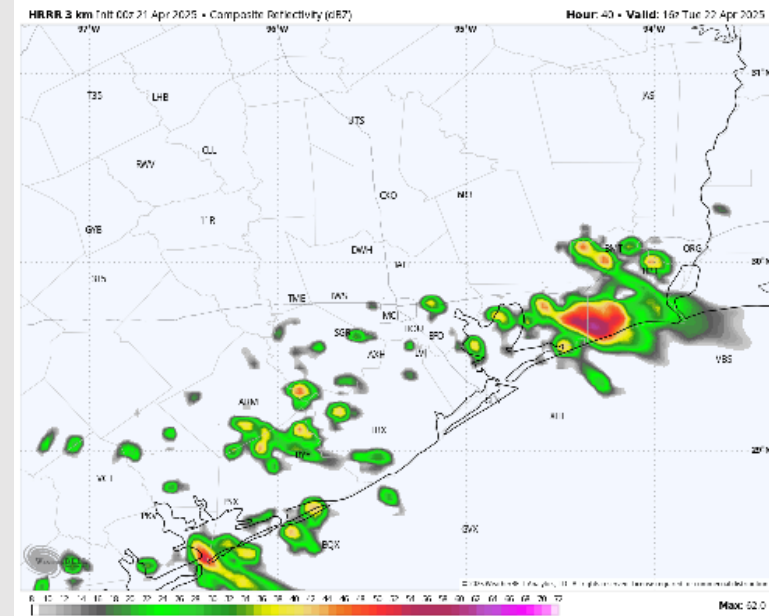
Precip: Scattered light showers in play for all Stations from 12 PM to 8 PM.

Wind: Winds will be out of the SE throughout the day. **N of Morgan's Point:** Winds will be at 3 – 8 kts throughout Tuesday. **S of Morgan's Point:** Winds will be at 5 - 10 kts through 6 PM, increasing to 10 - 15 kts after that time.

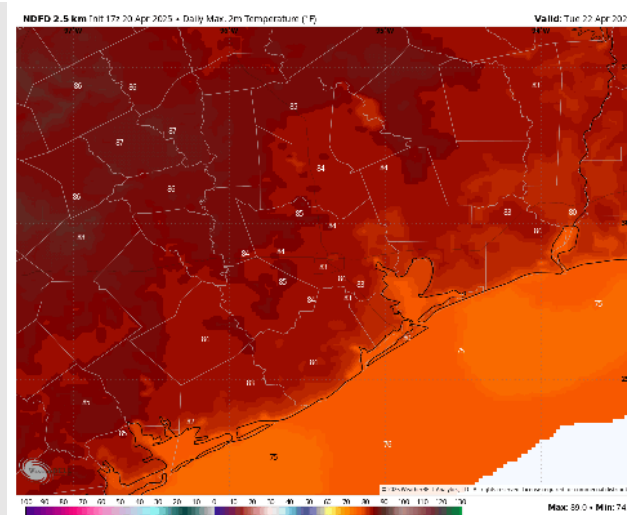
High Temps: **N of Morgan's Point:** Low 80s F. **S of Morgan's Point:** Near 80 F.

Visibility: Not anticipating visibility concerns for Tuesday.

Precip Image: 11 AM CT



Wind Speed:
4 PM CT



High Temps
Tuesday

Houston Pilots: WED. 4/23/2025

Forecast Discussion

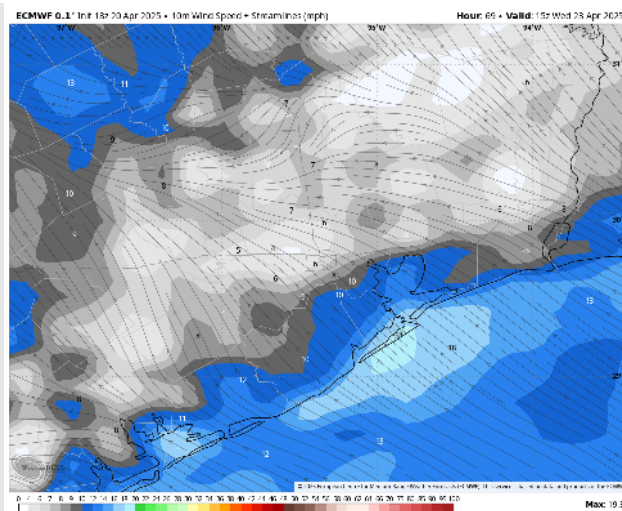
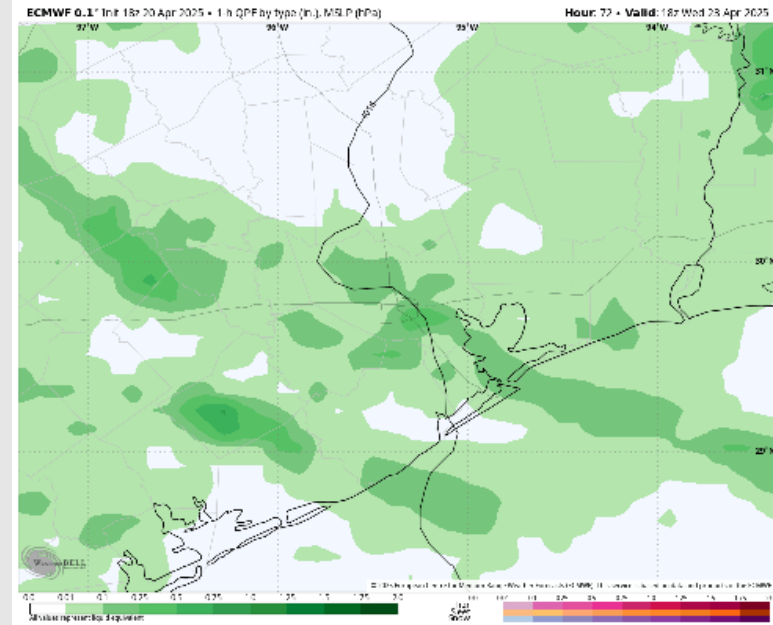
Precip: Scattered to widespread (70%) showers and storms in play for all Stations from 7 AM to 5 PM. **Main risks with storms will be lightning and gusts reaching 30 kts.**

Wind: Winds will be out of the S/SE throughout Wednesday. **N of Morgan's Point:** Winds will be at 3 – 8 kts throughout Wednesday. **S of Morgan's Point:** Winds will be at 8 – 13 kts for Wednesday. **Non-thunderstorm wind gusts will briefly be able to reach 20 kts at times for all Stations after 12 PM.**

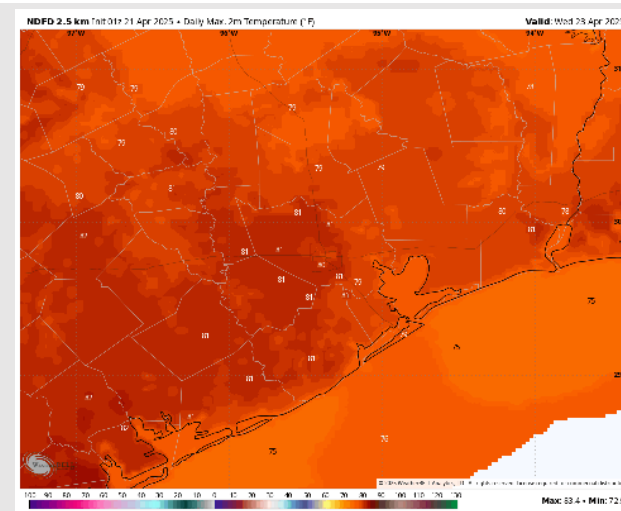
High Temps: **N of Morgan's Point:** Near 80 F. **S of Morgan's Point:** High 70s F.

Visibility: Not anticipating fog concerns for Wednesday, but visibilities can be reduced under heavy downpours.

Precip Image: 1 PM CT



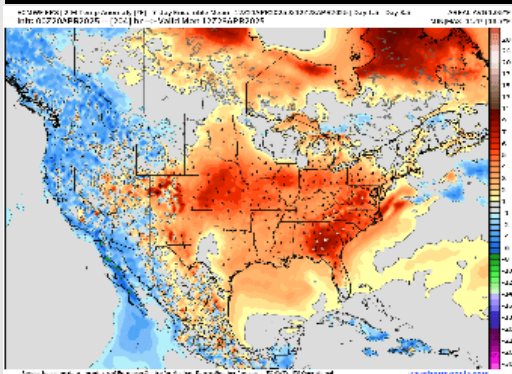
Wind Speed:
10 AM CT



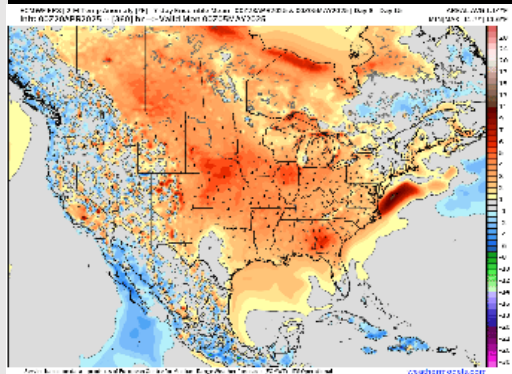
High Temps
Wednesday

Houston Pilots: 4/21/25

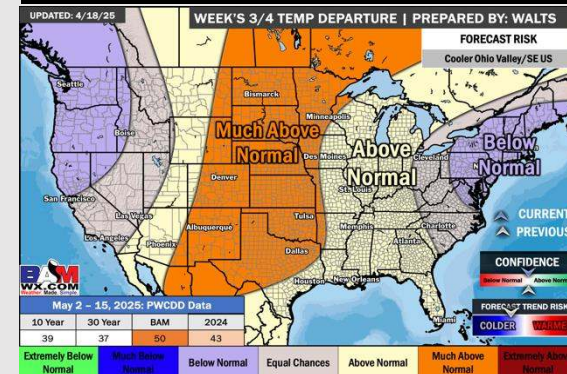
Next 7 Day Temperature Departure



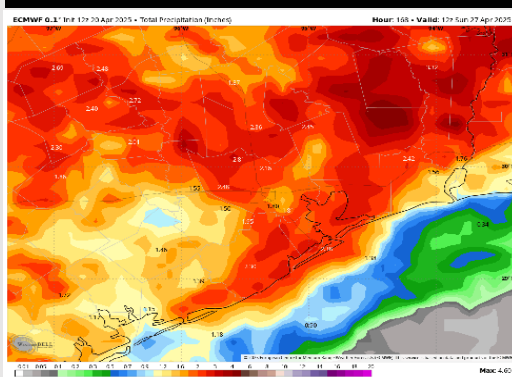
8-14 Day Temperature Departure



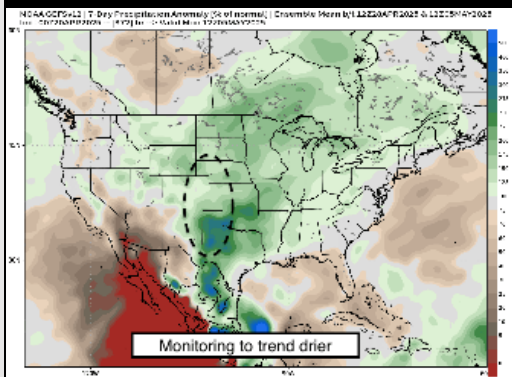
15-30 Day Temperature Departure



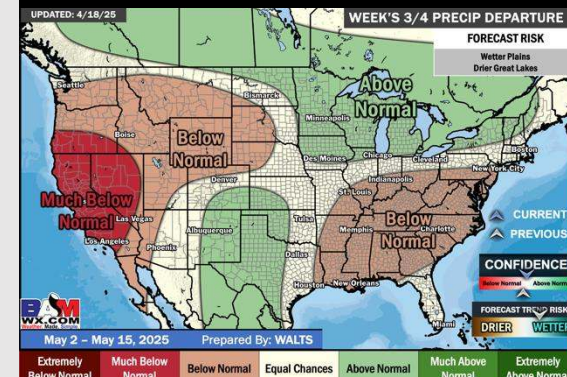
Next 7 Day Total Precipitation



8-14 Day % of Average Precip.



15-30 Day % of Average Precip.



- Temps are expected to be above normal the next 7 days. Scattered rain showers arrive early next week, with heavier rain chances by mid-next week.
- Above normal temps and above normal rainfall is favored 8 - 14 days from now.
- Above normal temperatures and near to slightly below normal precipitation chances are favored for early May.