

Houston Pilots Forecast Package

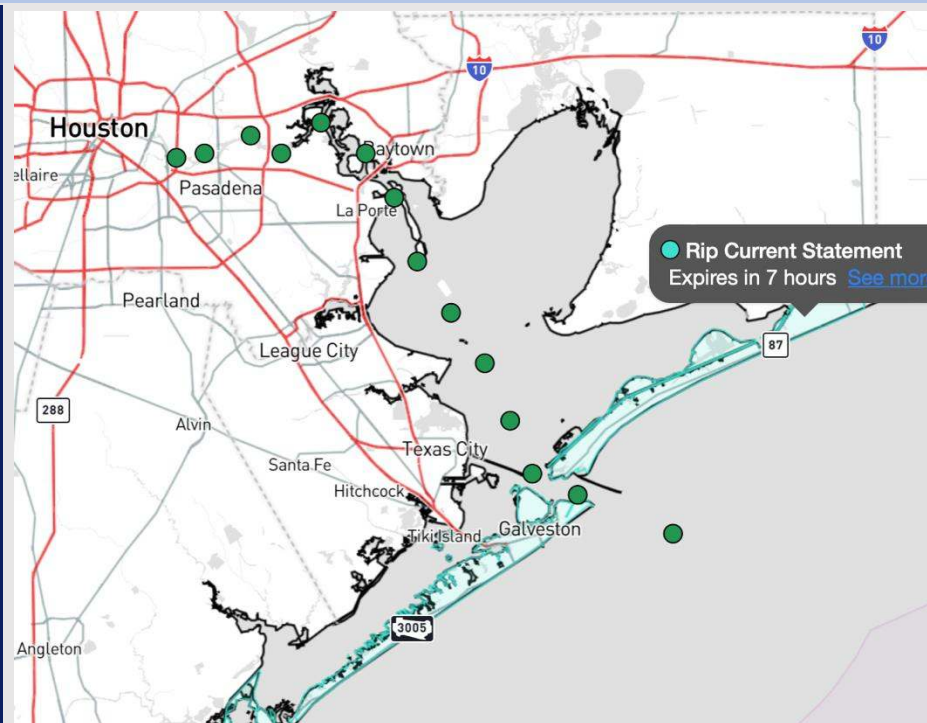


Updated: 1:10 PM CT
Sunday, April 20, 2025

Forecaster: Hope Kleitsch

Weather Headlines

- Choppy waters with wave heights of 4 – 5' will still be present at the Boarding Station through MON AM.
- Showers and storms will be possible this evening and into MON AM.
- Gusty winds of 20 – 25 kts will be possible for all Stations through the rest of the day.



Current Radar: 1:10 PM CT

As always, please do not hesitate to reach out to us with any forecast questions at (317)-560-8122. Press 1 for forecast questions.

You can also access real-time forecast updates and 24/7 meteorological chat assistance on your [Clarity](#) app. Click [here](#) for login assistance.



Houston Pilots Visibility Chart (miles)



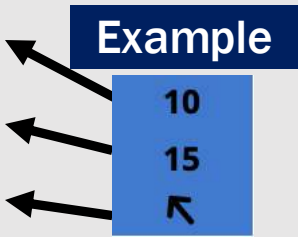
Visibility	Sun 3 pm	Sun 4 pm	Sun 5 pm	Sun 6 pm	Sun 7 pm	Sun 8 pm	Sun 9 pm	Sun 10 pm	Sun 11 pm	Mon 12 am	Mon 1 am	Mon 2 am	Mon 3 am	Mon 4 am	Mon 5 am	Mon 6 am	Mon 7 am	Mon 8 am	Mon 9 am	Mon 10 am	Mon 11 am	Mon 12 pm	Mon 1 pm	Mon 2 pm
Houston Pilots N - 610 Bridge	6.9	6.9	6.9	6.9	6.9	5.9	5.9	6.9	5.9	5.9	4.9	5.9	4.9	4.9	4.9	4.9	4.9	4.9	3.9	4.9	4.9	4.9	5.9	5.9
Houston Pilots M - Kinder 1	6.9	6.9	6.9	6.9	6.9	5.9	6.9	6.9	5.9	5.9	5.9	5.9	5.9	4.9	4.9	4.9	4.9	4.9	3.9	4.9	4.9	5.9	5.9	5.9
Houston Pilots L - Greens Bayou	6.9	6.9	6.9	6.9	6.9	5.9	6.9	6.9	5.9	5.9	5.9	6.9	5.9	4.9	4.9	4.9	4.9	4.9	3.9	4.9	4.9	5.9	5.9	5.9
Houston Pilots K - Shell Crude	6.9	6.9	6.9	6.9	6.9	5.9	6.9	6.9	5.9	5.9	5.9	6.9	5.9	4.9	4.9	4.9	4.9	3.9	3.9	4.9	4.9	5.9	5.9	5.9
Houston Pilots J - Lynchburg Ferries	6.9	6.9	6.9	6.9	6.9	5.9	6.9	6.9	6.9	5.9	6.9	6.9	5.9	5.9	4.9	4.9	4.9	4.9	3.9	4.9	4.9	5.9	5.9	5.9
Houston Pilots I - Exxon 3	6.9	6.9	6.9	6.9	6.9	5.9	6.9	6.9	6.9	5.9	6.9	6.9	5.9	5.9	4.9	4.9	4.9	3.9	3.9	4.9	4.9	5.9	5.9	5.9
Houston Pilots H - Morgans Point	6.9	6.9	6.9	6.9	6.9	5.9	5.9	6.9	5.9	5.9	6.9	6.9	5.9	4.9	4.9	4.9	4.9	3.9	3.9	3.9	4.9	5.9	5.9	5.9
Houston Pilots G - 75/76	5.9	5.9	5.9	5.9	5.9	5.9	5.9	6.9	5.9	5.9	5.9	5.9	5.9	4.9	3.9	3.9	4.9	3.9	2.9	3.9	3.9	4.9	5	4
Houston Pilots F - 63/64	5.9	5.9	5.9	5.9	5.9	5.9	5.9	6.9	5.9	5.9	5.9	5.9	5.9	4.9	3.9	3.9	4.9	3.9	2.9	3.9	3.9	4.9	5	5
Houston Pilots E - 51/52	5.9	5.9	4.9	5.9	5.9	5.9	5.9	5.9	5.9	5.9	5.9	4.9	4.9	4.9	3.9	3.9	4.9	3.9	2.9	3.9	3.9	4.9	6	8
Houston Pilots D - 37/38	5.9	5.9	4.9	5.9	5.9	5.9	5.9	5.9	5.9	5.9	5.9	4.9	4.9	4.9	3.9	3.9	4.9	3.9	2.9	3.9	3.9	4.9	7	9
Houston Pilots C - 25/26	5.9	5.9	4.9	5.9	5.9	5.9	5.9	5.9	5.9	5.9	5.9	4.9	4.9	4.9	3.9	3.9	4.9	3.9	2.9	3.9	4.9	4.9	9	9
Houston Pilots B - 11/12	5.9	4.9	4.9	5.9	5.9	5.9	5.9	5.9	5.9	5.9	5.9	4.9	4.9	4.9	3.9	4.9	4.9	3.9	2.9	3.9	4.9	4.9	9	9
Houston Pilots A - 1 & 2 Bravo	5.9	4.9	4.9	5.9	4.9	5.9	5.9	6.9	5.9	5.9	4.9	4.9	4.9	4.9	3.9	3.9	4.9	3.9	2.9	3.9	4.9	4.9	9	9

NOTE: This is automated data that may/may not agree with the official BAM thinking that's found on the daily slides or special visibility report slides. This data should be used as a guide only

Houston Pilots Wind Chart



Sustained Wind 10 Knots
Gusts 15 Knots
Wind from the SE



Wind	Sun 3 pm	Sun 4 pm	Sun 5 pm	Sun 6 pm	Sun 7 pm	Sun 8 pm	Sun 9 pm	Sun 10 pm	Sun 11 pm	Mon 12 am	Mon 1 am	Mon 2 am	Mon 3 am	Mon 4 am	Mon 5 am	Mon 6 am	Mon 7 am	Mon 8 am	Mon 9 am	Mon 10 am	Mon 11 am	Mon 12 pm	Mon 1 pm	Mon 2 pm
Houston Pilots N - 610 Bridge	13 26 ↑	14 25 ↑	13 25 ↑	13 24 ↑	12 22 ↑	10 21 ↑	9 17 ↑	8 16 ↑	6 14 ↑	6 12 ↑	5 10 ↑	5 9 ↑	3 8 ↑	3 7 ↑	3 7 ↑	3 8 ↓	3 8 ↓	3 7 ↓	3 7 ↓	3 8 ↓	5 8 ↓	5 9 ↓	6 10 ↓	6 10 ↓
Houston Pilots M - Kinder 1	13 25 ↑	14 25 ↑	13 25 ↑	13 24 ↑	12 23 ↑	10 21 ↑	9 17 ↑	8 16 ↑	6 14 ↑	6 12 ↑	5 10 ↑	5 9 ↑	3 8 ↑	3 7 ↑	3 7 ↑	3 8 ↓	3 8 ↓	3 7 ↓	3 7 ↓	3 8 ↓	5 8 ↓	5 9 ↓	6 10 ↓	6 12 ↓
Houston Pilots L - Greens Bayou	14 25 ↑	14 25 ↑	14 25 ↑	13 24 ↑	12 23 ↑	10 21 ↑	9 17 ↑	8 16 ↑	7 14 ↑	6 12 ↑	5 10 ↑	5 9 ↑	3 8 ↑	3 7 ↑	3 7 ↑	3 8 ↓	3 8 ↓	3 7 ↓	3 7 ↓	3 8 ↓	5 8 ↓	5 9 ↓	6 10 ↓	6 12 ↓
Houston Pilots K - Shell Crude	14 25 ↑	14 25 ↑	14 25 ↑	13 24 ↑	13 23 ↑	10 21 ↑	9 18 ↑	8 17 ↑	7 15 ↑	6 12 ↑	5 10 ↑	5 9 ↑	3 8 ↑	3 7 ↑	3 7 ↑	3 8 ↓	3 8 ↓	3 7 ↓	3 7 ↓	3 8 ↓	5 8 ↓	6 9 ↓	6 10 ↓	6 12 ↓
Houston Pilots J - Lynchburg Ferries	14 25 ↑	14 25 ↑	14 25 ↑	13 24 ↑	13 23 ↑	10 22 ↑	9 18 ↑	8 16 ↑	7 14 ↑	6 12 ↑	5 10 ↑	3 8 ↑	3 8 ↑	3 7 ↑	3 7 ↑	3 7 ↓	3 7 ↓	3 7 ↓	3 7 ↓	3 8 ↓	6 8 ↓	6 9 ↓	6 10 ↓	6 12 ↓
Houston Pilots I - Exxon 3	15 25 ↑	16 25 ↑	16 25 ↑	15 25 ↑	15 24 ↑	14 22 ↑	13 20 ↑	12 17 ↑	10 15 ↑	8 14 ↑	8 12 ↑	6 10 ↑	6 9 ↑	6 9 ↑	6 8 ↑	5 9 ↑	5 9 ↑	6 8 ↓	6 8 ↓	6 8 ↓	6 9 ↓	6 9 ↓	6 12 ↓	7 13 ↓
Houston Pilots H - Morgans Point	15 25 ↑	16 25 ↑	16 25 ↑	15 25 ↑	15 24 ↑	15 23 ↑	13 20 ↑	12 17 ↑	10 16 ↑	8 14 ↑	8 13 ↑	7 10 ↑	6 9 ↑	6 9 ↑	6 8 ↑	6 9 ↑	6 9 ↑	6 8 ↓	6 8 ↓	6 8 ↓	6 9 ↓	6 9 ↓	6 12 ↓	7 13 ↓
Houston Pilots G - 75/76	16 26 ↑	16 26 ↑	16 28 ↑	17 26 ↑	16 26 ↑	16 24 ↑	15 22 ↑	13 20 ↑	12 17 ↑	10 16 ↑	9 14 ↑	8 13 ↑	8 12 ↑	7 10 ↑	7 10 ↑	6 9 ↑	6 9 ↑	6 9 ↑	6 9 ↑	6 10 ↑	7 10 ↑	7 12 ↑	8 13 ↑	8 15 ↑
Houston Pilots F - 63/64	16 26 ↑	16 26 ↑	16 26 ↑	17 26 ↑	16 25 ↑	16 24 ↑	15 22 ↑	13 20 ↑	13 18 ↑	10 16 ↑	9 15 ↑	8 14 ↑	8 12 ↑	8 12 ↑	7 10 ↑	7 10 ↑	7 9 ↑	7 10 ↑	7 10 ↑	7 10 ↑	7 10 ↑	8 12 ↑	8 14 ↑	8 15 ↑
Houston Pilots E - 51/52	16 25 ↑	16 26 ↑	16 26 ↑	16 25 ↑	16 25 ↑	16 24 ↑	15 22 ↑	14 20 ↑	13 18 ↑	10 17 ↑	10 15 ↑	9 14 ↑	8 13 ↑	8 12 ↑	8 12 ↑	7 10 ↑	7 10 ↑	7 10 ↑	7 10 ↑	7 10 ↑	8 12 ↑	8 13 ↑	8 14 ↑	8 15 ↑
Houston Pilots D - 37/38	15 25 ↑	16 25 ↑	16 26 ↑	16 25 ↑	15 24 ↑	15 24 ↑	15 22 ↑	13 20 ↑	13 18 ↑	10 17 ↑	10 15 ↑	9 14 ↑	8 13 ↑	8 12 ↑	8 12 ↑	7 10 ↑	7 10 ↑	7 10 ↑	7 10 ↑	7 10 ↑	8 12 ↑	8 13 ↑	8 14 ↑	8 15 ↑
Houston Pilots C - 25/26	15 24 ↑	16 25 ↑	16 25 ↑	15 24 ↑	15 24 ↑	15 23 ↑	14 22 ↑	13 20 ↑	13 18 ↑	10 17 ↑	10 16 ↑	9 14 ↑	8 13 ↑	8 12 ↑	8 12 ↑	7 10 ↑	7 10 ↑	7 10 ↑	7 10 ↑	7 10 ↑	8 12 ↑	8 13 ↑	8 14 ↑	8 14 ↑
Houston Pilots B - 11/12	15 24 ↑	15 24 ↑	15 23 ↑	15 24 ↑	15 23 ↑	14 22 ↑	13 21 ↑	13 20 ↑	10 17 ↑	10 16 ↑	9 15 ↑	8 14 ↑	8 13 ↑	8 12 ↑	7 10 ↑	7 10 ↑	7 10 ↑	7 10 ↑	7 10 ↑	7 10 ↑	7 12 ↑	8 12 ↑	8 13 ↑	8 13 ↑
Houston Pilots A - 1 & 2 Bravo	15 24 ↑	16 24 ↑	16 24 ↑	15 24 ↑	15 24 ↑	15 24 ↑	15 23 ↑	14 21 ↑	13 20 ↑	12 18 ↑	10 17 ↑	10 16 ↑	9 15 ↑	9 14 ↑	9 14 ↑	8 13 ↑	8 13 ↑	8 13 ↑	8 12 ↑	8 13 ↑	8 13 ↑	8 12 ↑	8 13 ↑	8 13 ↑

NOTE: This is automated data that may/may not agree with the official BAM thinking that's found on the daily slides.
This data should be used as a guide only.

Houston Pilots: SUN. 4/20/2025

Forecast Discussion

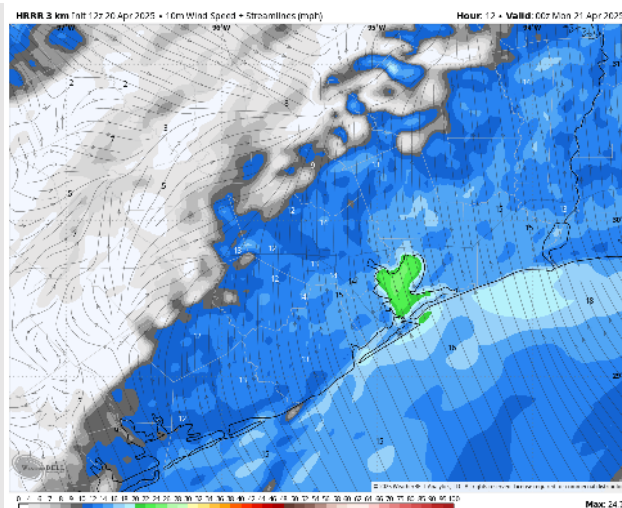
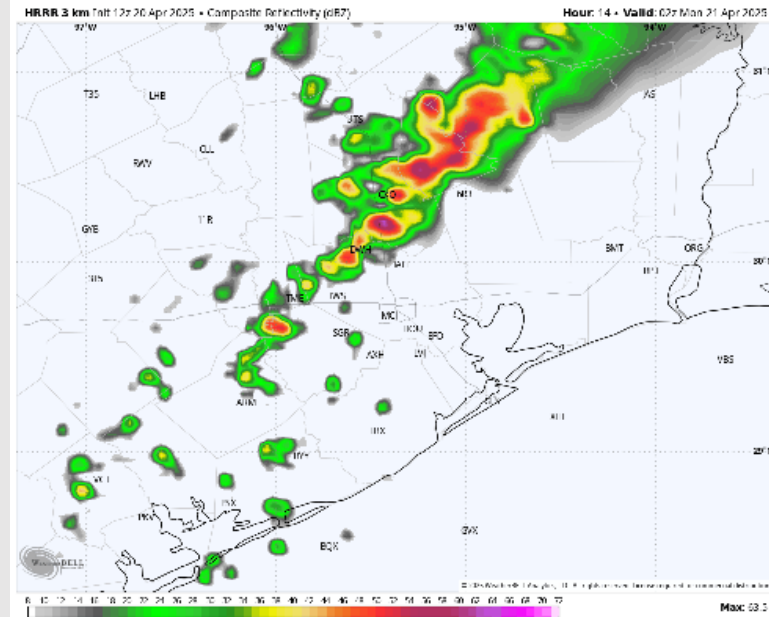
Precip: Isolated showers and storms favored throughout the remainder of the day; however, a majority of the storms are favored to stay north of the Stations.

Wind: Winds will be out of the S/SE for the rest of the day. **N of Morgan's Point:** Winds will be at 7 – 12 kts throughout the remainder of the day. **S of Morgan's Point:** Winds will be at 13 – 18 kts for rest of the day. **Wind gusts of 20 – 25 kts will be possible throughout the rest of the day for all Stations.**

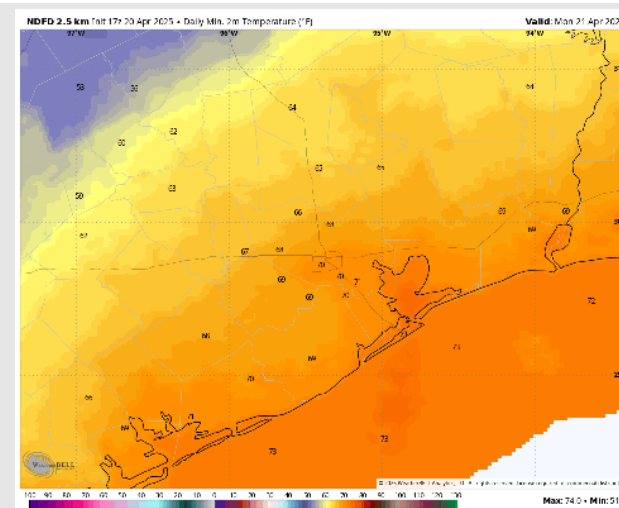
Low Temps: **N of Morgan's Point:** Near 70 F. **S of Morgan's Point:** Low 70s F.

Visibility: Not anticipating visibility concerns for today.

Precip Image: 9 PM CT



Wind Speed:
7 PM CT



Low Temps
MON AM

Houston Pilots: MON. 4/21/2025

Forecast Discussion

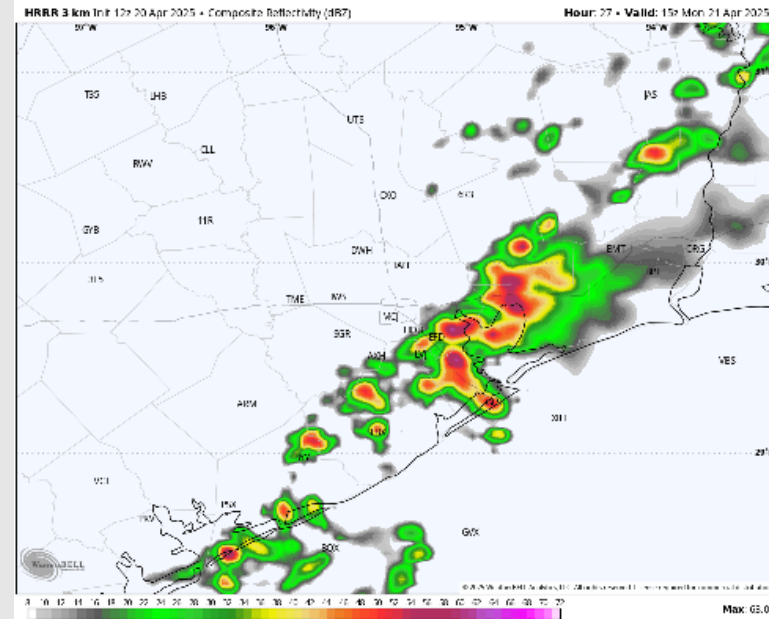
Precip: Scattered showers and storms (40%) from 12 AM through 5 PM. The best timeframe for storms will be from 7AM to 1PM.
Lightning and brief wind gusts of 30 kts will be possible with storms.

Wind: Winds will be out of the S through 5 AM before becoming variable. Winds then settle out of the SSE by 4 PM. **N of Morgan's Point:** Winds will be at 3 – 8 kts throughout the day. **S of Morgan's Point:** Winds will be at 6 – 11 kts throughout the day Monday.

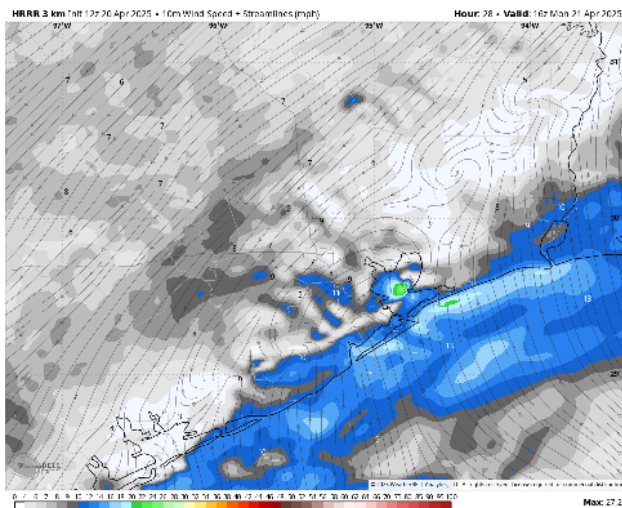
High Temps: **N of Morgan's Point:** Near 80 F. **S of Morgan's Point:** Upper 70sF.

Visibility: No fog concerns for Monday, however visibilities may be reduced under downpours.

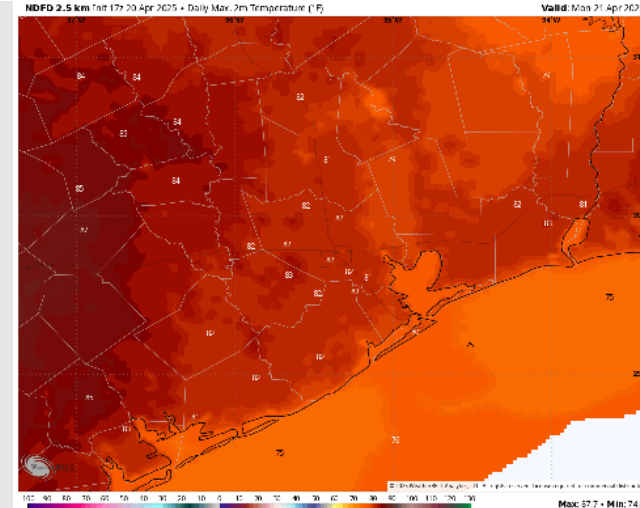
Precip Image: 10 AM CT



Wind Speed
10 AM CT



High Temps
Monday



Houston Pilots: TUE. 4/22/2025

Forecast Discussion

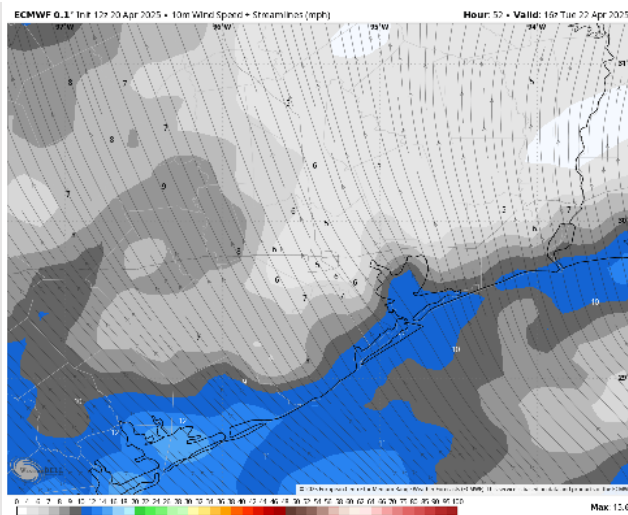
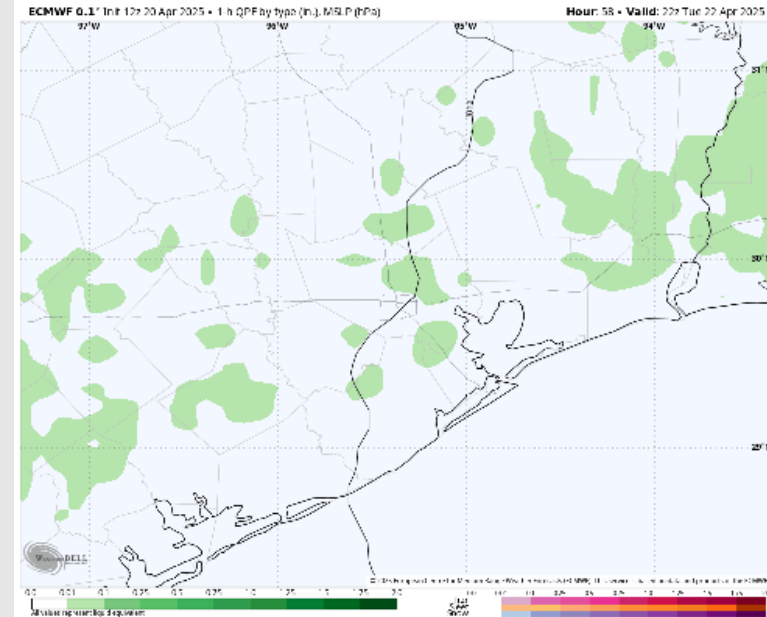
Precip: Scattered light showers in play for all Stations from 12 PM to 8 PM.

Wind: Winds will be out of the SE throughout the day. **N of Morgan's Point:** Winds will be at 3 – 8 kts throughout Tuesday. **S of Morgan's Point:** Winds will be at 5 - 10 kts, increasing to 10 - 15 kts after 6PM.

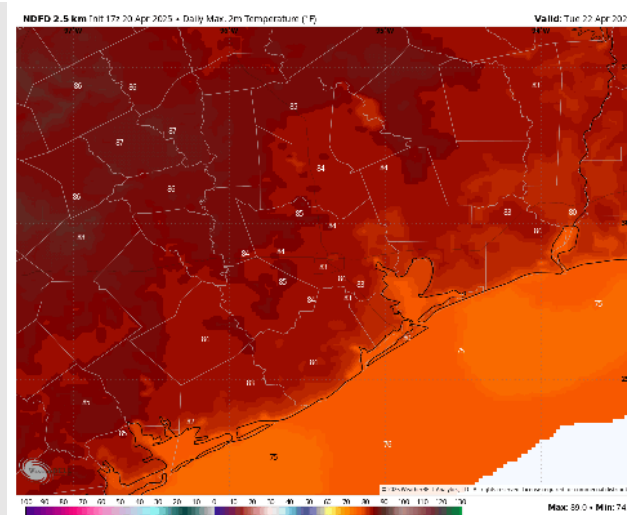
High Temps: **N of Morgan's Point:** Low 80s F. **S of Morgan's Point:** Near 80 F.

Visibility: Not anticipating visibility concerns for Tuesday.

Precip Image: 5 PM CT



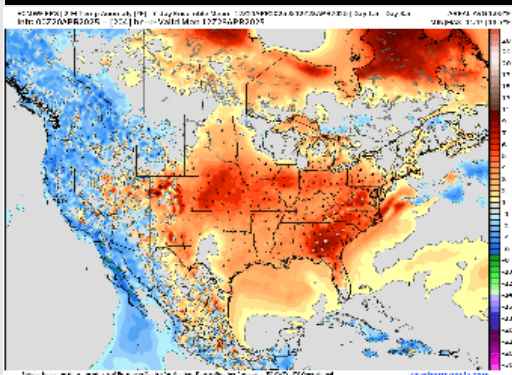
Wind Speed:
11 AM CT



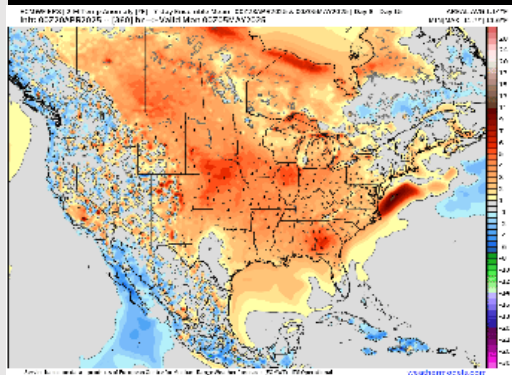
High Temps
Tuesday

Houston Pilots: 4/20/25

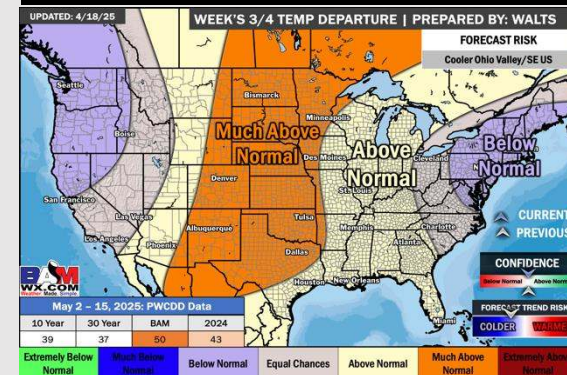
Next 7 Day Temperature Departure



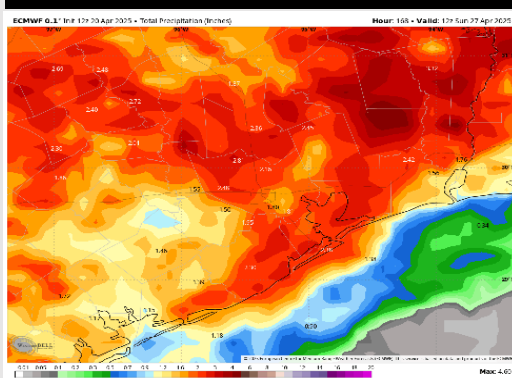
8-14 Day Temperature Departure



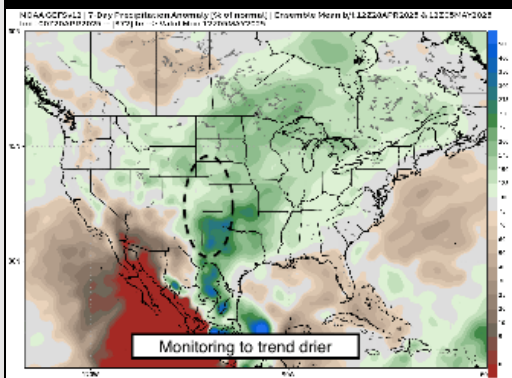
15-30 Day Temperature Departure



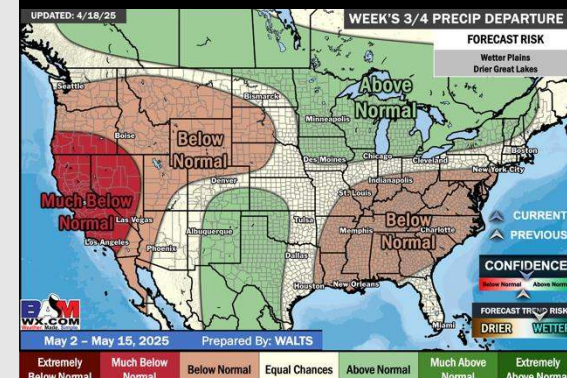
Next 7 Day Total Precipitation



8-14 Day % of Average Precip.



15-30 Day % of Average Precip.



- Temps are expected to be above normal the next 7 days. Scattered rain showers arrive early next week, with heavier rain chances by mid-next week.
- Above normal temps and above normal rainfall is favored 8 - 14 days from now.
- Above normal temperatures and near to slightly below normal precipitation chances are favored for early May.