

Houston Pilots Forecast Package



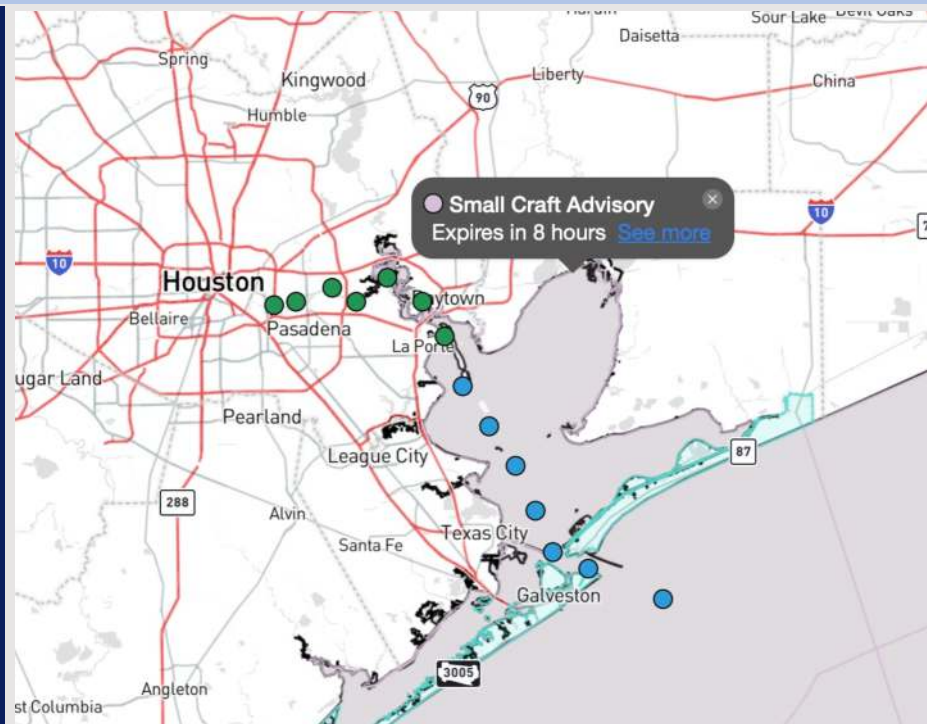
Updated: 10:45 PM CT

Saturday, April 19, 2025

Forecaster: Tyler Riggles

Weather Headlines

- Watching for gusts up to 30 kts through the morning.
- No fog is expected for the foreseeable future.
- **Zulu Port Trigger is in effect for the Boarding Station due to 6-7' wave height potential. See slides below!**



Current Radar: 10:37 PM CT

As always, please do not hesitate to reach out to us with any forecast questions at (317)-560-8122. Press 1 for forecast questions.

You can also access real-time forecast updates and 24/7 meteorological chat assistance on your [Clarity](#) app. Click [here](#) for login assistance.



Houston Pilots Port Trigger Update

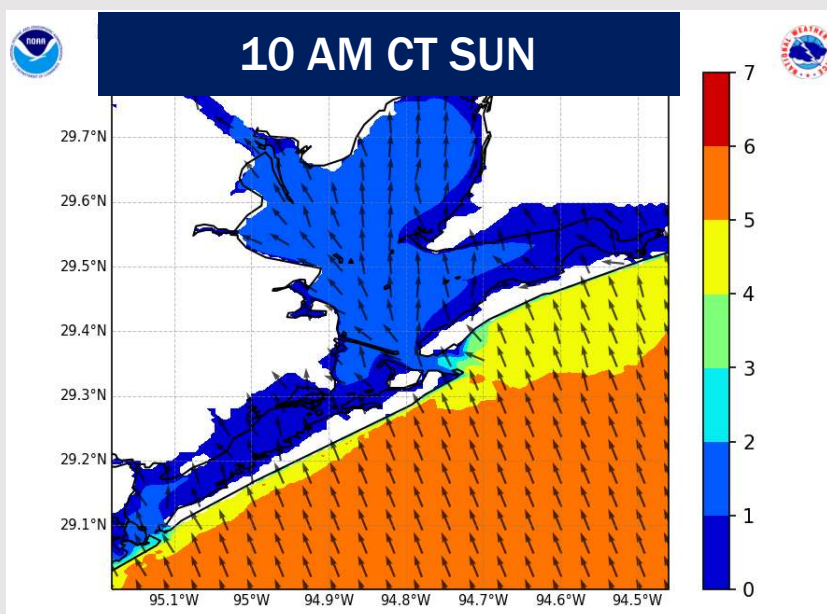
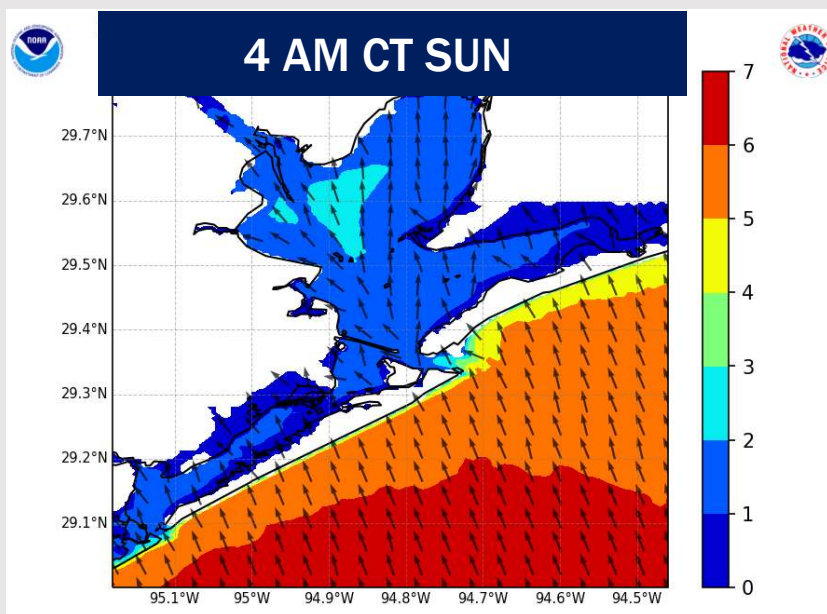
Port Condition	34 KTS+ Sustained Wind Trigger Reached at:	6 Foot Wave Trigger Reached at:	Time Remaining/Trigger Ends At:
Victor	—	—	—
Whiskey	—	—	—
X-Ray	—	—	—
Yankee	—	—	—
Zulu	—	CURRENT	12 PM SUN

Port Condition	Trigger Definition	Trigger Reached?
Victor	Hurricane entering/developing in Gulf of Mexico that's a threat to the area	N/A
Whiskey	72 hours prior to predicted sustained winds of 34+ KTS	N/A
X-Ray	48 hours prior to predicted sustained winds of 34+ KTS or 6' wave height	PAST
Yankee	24 hours prior to predicted sustained winds of 34+ KTS or 6' wave height	PAST
Zulu	12 hours prior to predicted sustained winds of 34+ KTS or 6' wave height	YES

NOTES:

Due to elevated winds and strong gusts through the weekend, max wave heights are expected to increase to 6' for the Boarding Station will persist through 12 PM Sunday. Max heights may briefly reach 7' between 1 – 7 AM Sunday.

Wave Height Forecast Update



Elevated winds and strong wind gusts are anticipated to allow wave heights to reach 6' at the Boarding Station through 12 PM today.

Max heights may briefly reach 7' between 1 – 7 AM today.

Wave heights of 3 – 5' at the Boarding Station are anticipated to continue through much of Monday.

Houston Pilots Visibility Chart (miles)



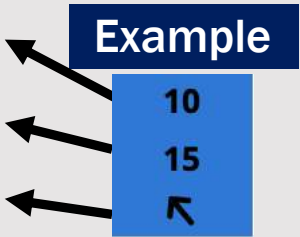
Visibility	Sun 12 am	Sun 1 am	Sun 2 am	Sun 3 am	Sun 4 am	Sun 5 am	Sun 6 am	Sun 7 am	Sun 8 am	Sun 9 am	Sun 10 am	Sun 11 am	Sun 12 pm	Sun 1 pm	Sun 2 pm	Sun 3 pm	Sun 4 pm	Sun 5 pm	Sun 6 pm	Sun 7 pm	Sun 8 pm	Sun 9 pm	Sun 10 pm	Sun 11 pm
Houston Pilots N - 610 Bridge	6.9	6.9	6.9	6.9	6.9	6.9	6.9	7.9	6.9	5.9	6.9	6.9	6.9	6.9	6.9	6.9	6.9	6.9	6.9	6.9	6.9	6.9	6.9	6.9
Houston Pilots M - Kinder 1	6.9	6.9	6.9	6.9	6.9	6.9	6.9	9	6.9	6.9	6.9	6.9	6.9	7.9	7.9	7.9	6.9	6.9	6.9	6.9	6.9	6.9	6.9	6.9
Houston Pilots L - Greens Bayou	9	9	9	9	9	7.9	9	9	9	6.9	8	9	9	10	10	10	9	9	9	9	7.9	6.9	7.9	9
Houston Pilots K - Shell Crude	10	10	10	10	10	10	10	10	9	6.9	9	10	10	10	10	10	10	10	10	10	10	9	9	9
Houston Pilots J - Lynchburg Ferries	10	10	10	10	10	10	10	10	9	6.9	9	10	10	10	10	10	10	9	9	10	9	6.9	9	9
Houston Pilots I - Exxon 3	10	10	10	10	10	10	10	10	10	8	10	10	10	10	10	10	10	10	10	10	10	9	9	10
Houston Pilots H - Morgans Point	10	10	10	10	10	10	10	10	10	8	10	10	10	10	10	10	10	10	10	10	10	9	9	10
Houston Pilots G - 75/76	6.9	6.9	6.9	6.9	6.9	7.9	10	10	10	6.9	6.9	7.9	10	10	10	10	6.9	6.9	7.9	6.9	6.9	6.9	9	9
Houston Pilots F - 63/64	6.9	6.9	6.9	6.9	6.9	6.9	10	10	10	6.9	6.9	7.9	10	10	10	10	6.9	6.9	6.9	6.9	6.9	5.9	9	9
Houston Pilots E - 51/52	5.9	6.9	6.9	6.9	6.9	6.9	8	10	9	6.9	5.9	6.9	7.9	7.9	9	7.9	6.9	5.9	6.9	6.9	5.9	5.9	9	9
Houston Pilots D - 37/38	5.9	5.9	5.9	6.9	6.9	6.9	8	10	9	4.9	5.9	6.9	7.9	7.9	9	7.9	6.9	5.9	6.9	6.9	5.9	5.9	9	9
Houston Pilots C - 25/26	5.9	5.9	5.9	6.9	6.9	6.9	8	9	6.9	4.9	5.9	6.9	7.9	7.9	9	7.9	6.9	5.9	6.9	6.9	5.9	4.9	9	9
Houston Pilots B - 11/12	4.9	5.9	5.9	5.9	6.9	6.9	8	9	6.9	4.9	5.9	6.9	7.9	6.9	7.9	6.9	6.9	4.9	5.9	5.9	4.9	4.9	9	9
Houston Pilots A - 1 & 2 Bravo	4.9	4.9	4.9	4.9	5.9	6.9	8	7.9	6.9	4.9	5.9	5.9	6.9	6.9	6.9	6.9	5.9	4.9	4.9	4.9	4.9	4.9	9	9

NOTE: This is automated data that may/may not agree with the official BAM thinking that's found on the daily slides or special visibility report slides. This data should be used as a guide only

Houston Pilots Wind Chart



Sustained Wind 10 Knots
Gusts 15 Knots
Wind from the SE



Wind	Sun 12 am	Sun 1 am	Sun 2 am	Sun 3 am	Sun 4 am	Sun 5 am	Sun 6 am	Sun 7 am	Sun 8 am	Sun 9 am	Sun 10 am	Sun 11 am	Sun 12 pm	Sun 1 pm	Sun 2 pm	Sun 3 pm	Sun 4 pm	Sun 5 pm	Sun 6 pm	Sun 7 pm	Sun 8 pm	Sun 9 pm	Sun 10 pm	Sun 11 pm
Houston Pilots N - 610 Bridge	15	15	15	15	15	15	14	13	12	12	12	12	13	13	14	14	14	14	14	13	10	9	8	7
	31	30	29	30	30	30	29	26	24	24	24	24	25	26	26	28	26	26	26	23	21	20	17	15
	↖	↖	↖	↖	↖	↖	↖	↖	↖	↖	↖	↖	↖	↖	↖	↖	↖	↖	↖	↖	↖	↖	↖	
Houston Pilots M - Kinder 1	15	15	15	15	15	15	14	13	12	12	12	12	13	13	14	14	14	14	14	13	10	9	8	7
	31	30	29	30	30	30	29	26	24	24	24	24	25	26	26	28	26	26	26	23	21	20	17	15
	↖	↖	↖	↖	↖	↖	↖	↖	↖	↖	↖	↖	↖	↖	↖	↖	↖	↖	↖	↖	↖	↖	↖	
Houston Pilots L - Greens Bayou	15	15	15	15	15	15	14	13	12	12	12	13	13	14	14	14	14	14	14	13	10	10	8	7
	31	30	29	30	30	30	29	26	24	24	24	24	25	26	26	28	26	26	26	23	22	20	17	15
	↖	↖	↖	↖	↖	↖	↖	↖	↖	↖	↖	↖	↖	↖	↖	↖	↖	↖	↖	↖	↖	↖	↖	
Houston Pilots K - Shell Crude	15	15	15	15	15	15	15	13	13	12	12	13	13	14	14	14	14	14	14	13	10	10	8	8
	30	30	29	29	30	30	29	26	24	24	24	24	25	26	26	26	26	26	26	24	22	20	17	15
	↖	↖	↖	↖	↖	↖	↖	↖	↖	↖	↖	↖	↖	↖	↖	↖	↖	↖	↖	↖	↖	↖	↖	
Houston Pilots J - Lynchburg Ferries	15	15	15	15	15	15	15	14	13	13	13	13	13	14	15	15	14	14	14	13	12	10	8	7
	30	30	29	29	30	30	29	26	24	24	24	24	25	26	26	26	26	26	26	24	22	20	17	15
	↖	↖	↖	↖	↖	↖	↖	↖	↖	↖	↖	↖	↖	↖	↖	↖	↖	↖	↖	↖	↖	↖	↖	
Houston Pilots I - Exxon 3	21	20	20	21	21	20	20	18	17	16	15	15	15	15	16	16	16	16	16	15	15	14	13	10
	30	30	29	29	30	30	29	28	25	24	24	24	25	25	25	26	26	26	26	24	23	21	18	17
	↖	↖	↖	↖	↖	↖	↖	↖	↖	↖	↖	↖	↖	↖	↖	↖	↖	↖	↖	↖	↖	↖	↖	
Houston Pilots H - Morgans Point	20	20	20	20	20	20	20	18	17	16	15	15	15	15	16	16	16	16	16	15	15	14	13	10
	30	30	29	29	30	30	29	28	25	24	24	24	24	25	25	26	26	26	26	25	23	21	18	17
	↖	↖	↖	↖	↖	↖	↖	↖	↖	↖	↖	↖	↖	↖	↖	↖	↖	↖	↖	↖	↖	↖	↖	
Houston Pilots G - 75/76	22	22	22	22	22	22	22	21	20	18	17	16	16	16	16	16	16	17	17	17	16	15	14	13
	32	31	31	31	32	31	31	30	28	26	25	24	26	26	26	28	28	29	28	26	25	23	21	20
	↖	↖	↖	↖	↖	↖	↖	↖	↖	↖	↖	↖	↖	↖	↖	↖	↖	↖	↖	↖	↖	↖	↖	
Houston Pilots F - 63/64	22	22	22	22	22	22	22	22	20	18	17	16	16	16	16	16	16	17	17	17	16	15	14	13
	31	31	30	31	31	31	31	30	29	26	25	24	26	26	26	28	28	28	26	24	22	21	20	
	↖	↖	↖	↖	↖	↖	↖	↖	↖	↖	↖	↖	↖	↖	↖	↖	↖	↖	↖	↖	↖	↖	↖	
Houston Pilots E - 51/52	22	22	21	22	22	22	22	21	20	18	17	16	16	16	16	16	16	16	17	17	16	15	15	13
	30	30	29	30	31	31	31	30	29	28	25	24	26	26	25	26	28	28	26	25	24	22	21	20
	↖	↖	↖	↖	↖	↖	↖	↖	↖	↖	↖	↖	↖	↖	↖	↖	↖	↖	↖	↖	↖	↖	↖	
Houston Pilots D - 37/38	22	22	21	22	22	22	22	21	20	18	17	16	16	16	16	16	16	16	16	16	16	15	14	13
	30	30	29	30	31	31	31	30	29	28	25	24	26	26	25	26	26	26	26	25	24	22	21	20
	↖	↖	↖	↖	↖	↖	↖	↖	↖	↖	↖	↖	↖	↖	↖	↖	↖	↖	↖	↖	↖	↖	↖	
Houston Pilots C - 25/26	21	21	20	21	22	22	22	21	20	18	17	16	16	16	15	16	16	16	16	16	15	15	14	13
	30	30	29	30	30	31	31	30	29	28	25	24	25	25	25	25	25	26	26	24	24	22	21	20
	↖	↖	↖	↖	↖	↖	↖	↖	↖	↖	↖	↖	↖	↖	↖	↖	↖	↖	↖	↖	↖	↖	↖	
Houston Pilots B - 11/12	20	20	18	20	20	20	20	20	18	17	16	15	15	15	15	16	16	16	16	15	15	14	13	13
	29	29	28	29	29	29	30	29	28	26	24	24	24	24	24	24	24	24	24	23	23	21	20	20
	↖	↖	↖	↖	↖	↖	↖	↖	↖	↖	↖	↖	↖	↖	↖	↖	↖	↖	↖	↖	↖	↖	↖	
Houston Pilots A - 1 & 2 Bravo	22	22	21	21	22	22	22	22	21	20	17	16	16	16	15	16	16	16	16	16	16	15	15	14
	30	30	30	30	30	30	31	30	30	28	26	24	25	24	24	24	24	24	25	24	24	23	22	22
	↖	↖	↖	↖	↖	↖	↖	↖	↖	↖	↖	↖	↖	↖	↖	↖	↖	↖	↖	↖	↖	↖	↖	

NOTE: This is automated data that may/may not agree with the official BAM thinking that's found on the daily slides.
This data should be used as a guide only.

Houston Pilots: SUN. 4/20/2025

Forecast Discussion

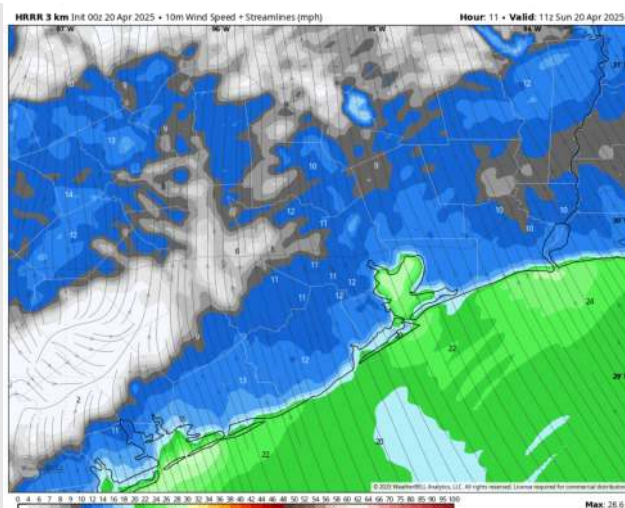
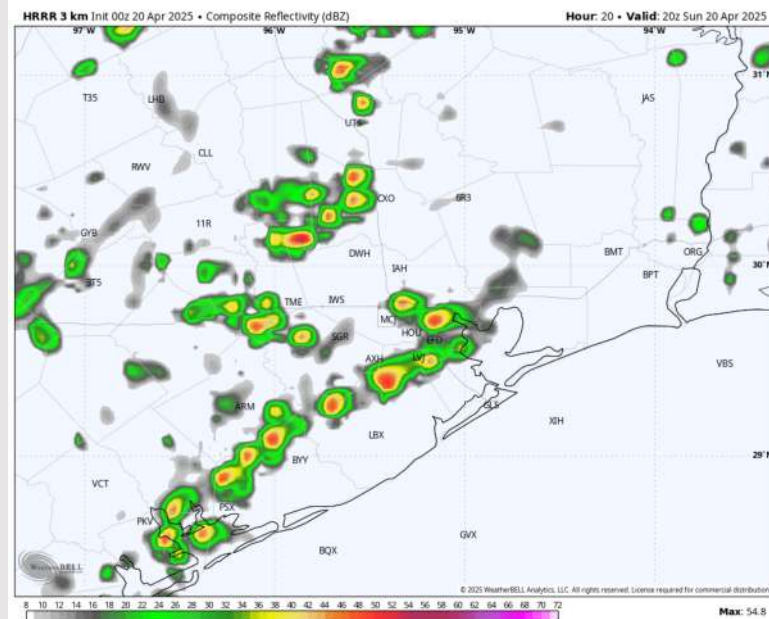
Precip: Scattered showers and storms will be in play for all Stations after 10 AM.

Wind: Winds will be out of the S/SE throughout the day. **N of Morgan's Point:** Winds will be at 7 – 12 kts throughout the day. **S of Morgan's Point:** Winds will be at 16 – 25 kts through 7 AM, then winds will decrease to 13 – 18 kts for rest of the day. **Wind gusts of 20 – 25 kts will be possible throughout the day for all Stations, with a few gusts near 30 kts possible from 12AM to 6AM.**

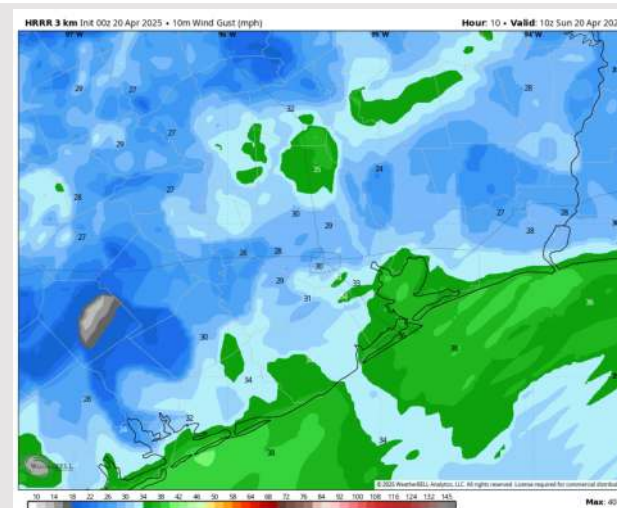
High Temps: **N of Morgan's Point:** Mid 80s F. **S of Morgan's Point:** Low 80s F.

Visibility: Not anticipating visibility concerns for today.

Precip Image: 3 PM CT



Wind Speed:
6 AM CT



MAX GUSTS
Today

Houston Pilots: MON. 4/21/2025

Forecast Discussion

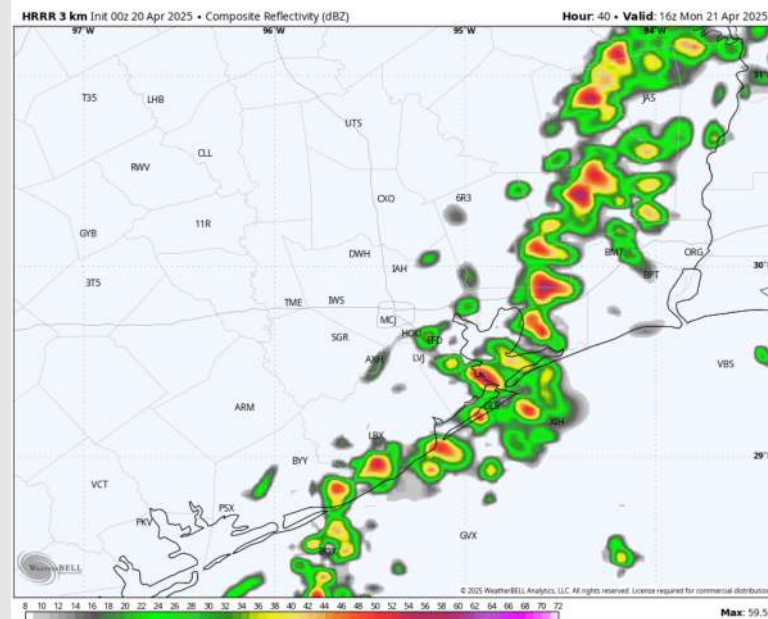
Precip: Hit/miss showers and storms (30%) from 12 AM through 8 PM. **Lightning and brief wind gusts of 30 kts will be possible with storms.**

Wind: Winds will be out of the S through 5 AM before becoming variable. Winds then settle out of the SSE by 4 PM. **N of Morgan's Point:** Winds will be at 3 – 8 kts throughout the day. **S of Morgan's Point:** Winds will be at 6 – 11 kts throughout the day Monday.

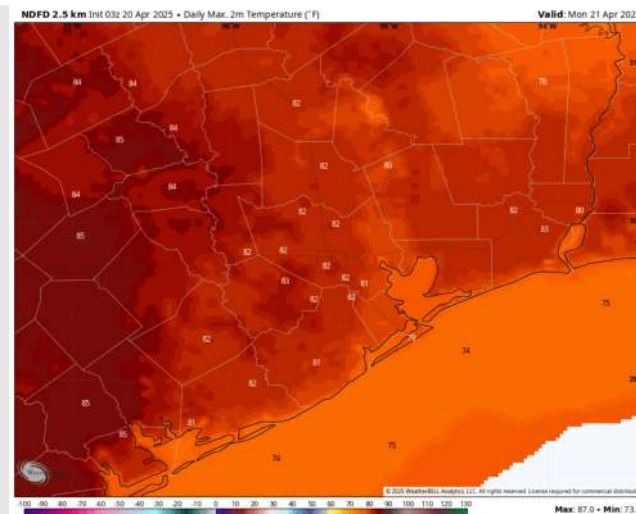
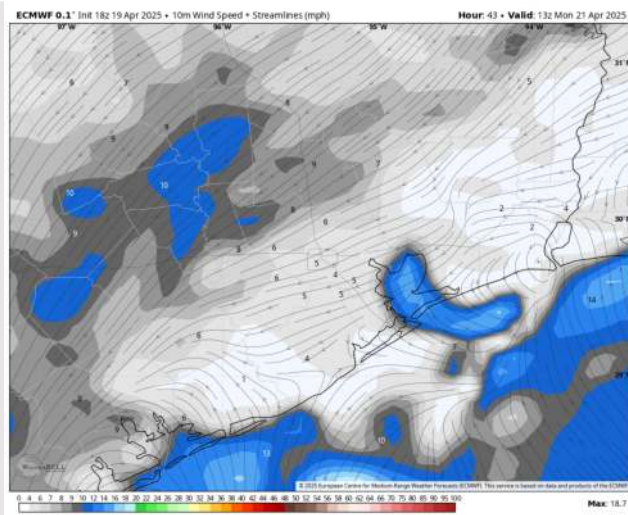
High Temps: **N of Morgan's Point:** Near 80 F. **S of Morgan's Point:** Upper 70sF.

Visibility: No fog concerns for Monday, however visibilities may be reduced under downpours.

Precip Image: 11 AM CT



Wind Speed
8 AM CT



High Temps
Monday

Houston Pilots: TUE. 4/22/2025

Forecast Discussion

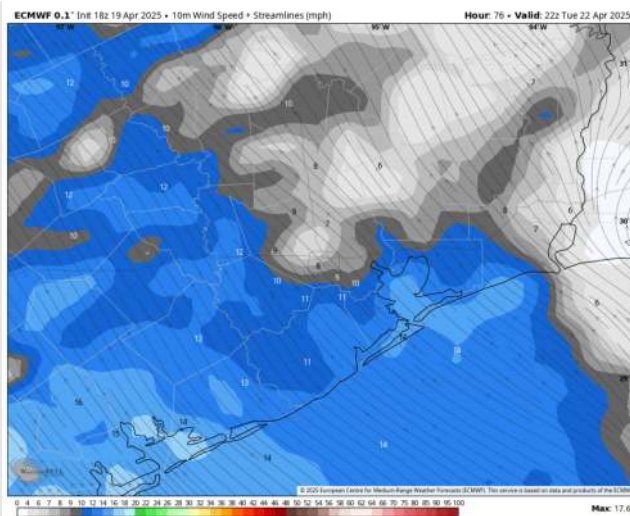
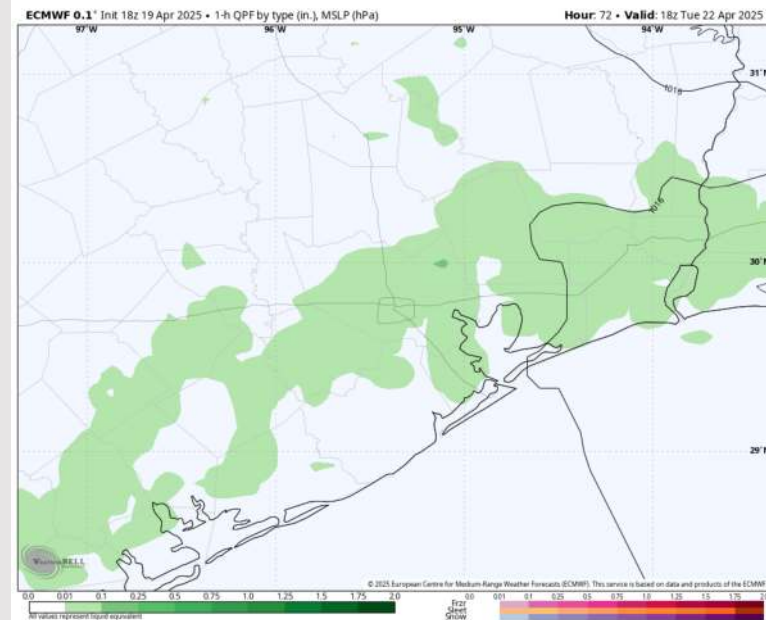
Precip: Scattered light showers in play for all Stations from 10 AM to 6 PM.

Wind: Winds will be out of the SE throughout the day. **N of Morgan's Point:** Winds will be at 3 – 8 kts throughout Tuesday. **S of Morgan's Point:** Winds will be at 8 - 13 kts through Tuesday.

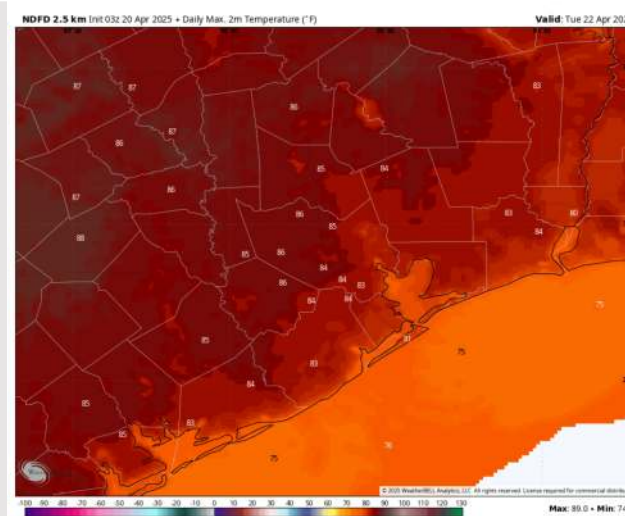
High Temps: **N of Morgan's Point:** Low 80s F. **S of Morgan's Point:** Near 80 F.

Visibility: Not anticipating visibility concerns for Tuesday.

Precip Image: 1 PM CT



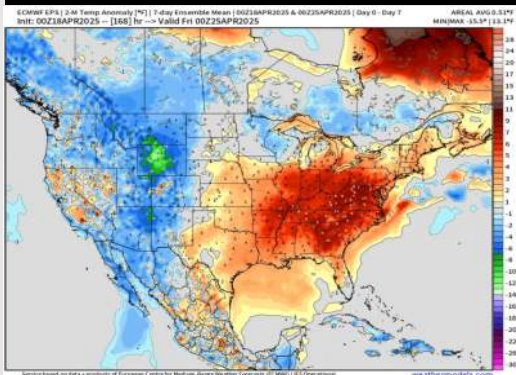
Wind Speed:
5 PM CT



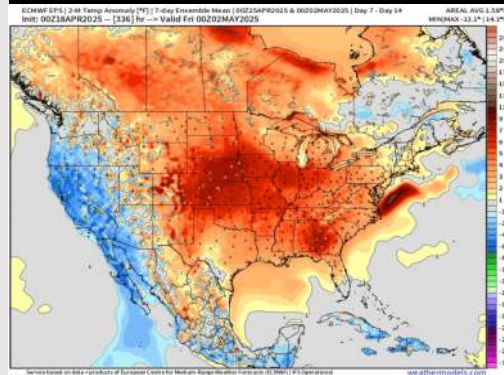
High Temps
Tuesday

Houston Pilots: 4/20/25

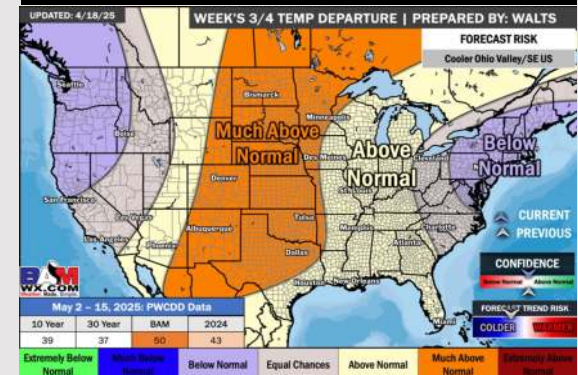
Next 7 Day Temperature Departure



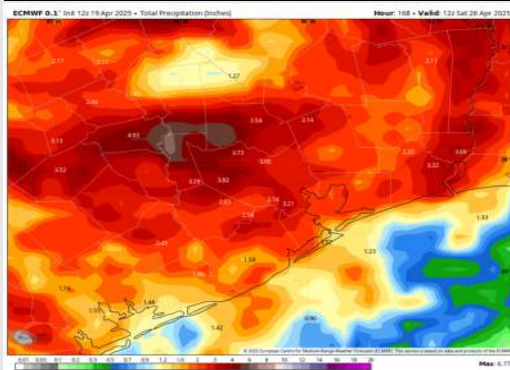
8-14 Day Temperature Departure



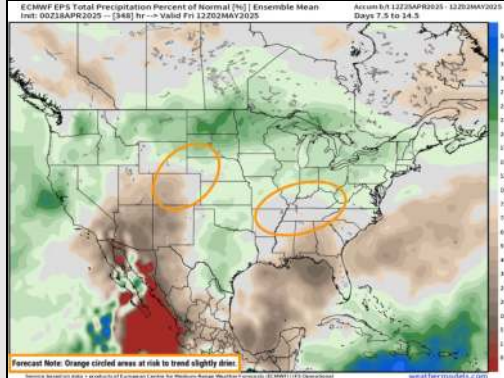
15-30 Day Temperature Departure



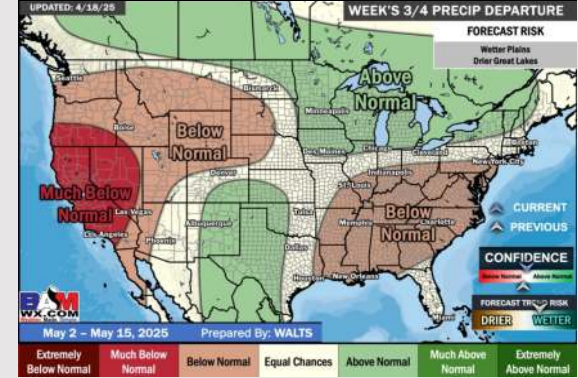
Next 7 Day Total Precipitation



8-14 Day % of Average Precip.



15-30 Day % of Average Precip.



- Temps are expected to be above normal the next 7 days. Scattered rain showers arrive early next week, with heavier rain chances by mid-next week.
- Above normal temps and above normal rainfall is favored 8 - 14 days from now.
- Above normal temperatures and near to slightly below normal precipitation chances are favored for early May.