



Strong/Severe Risks

Current: 4:45 PM CT 4/5/25

Forecaster: Kemper

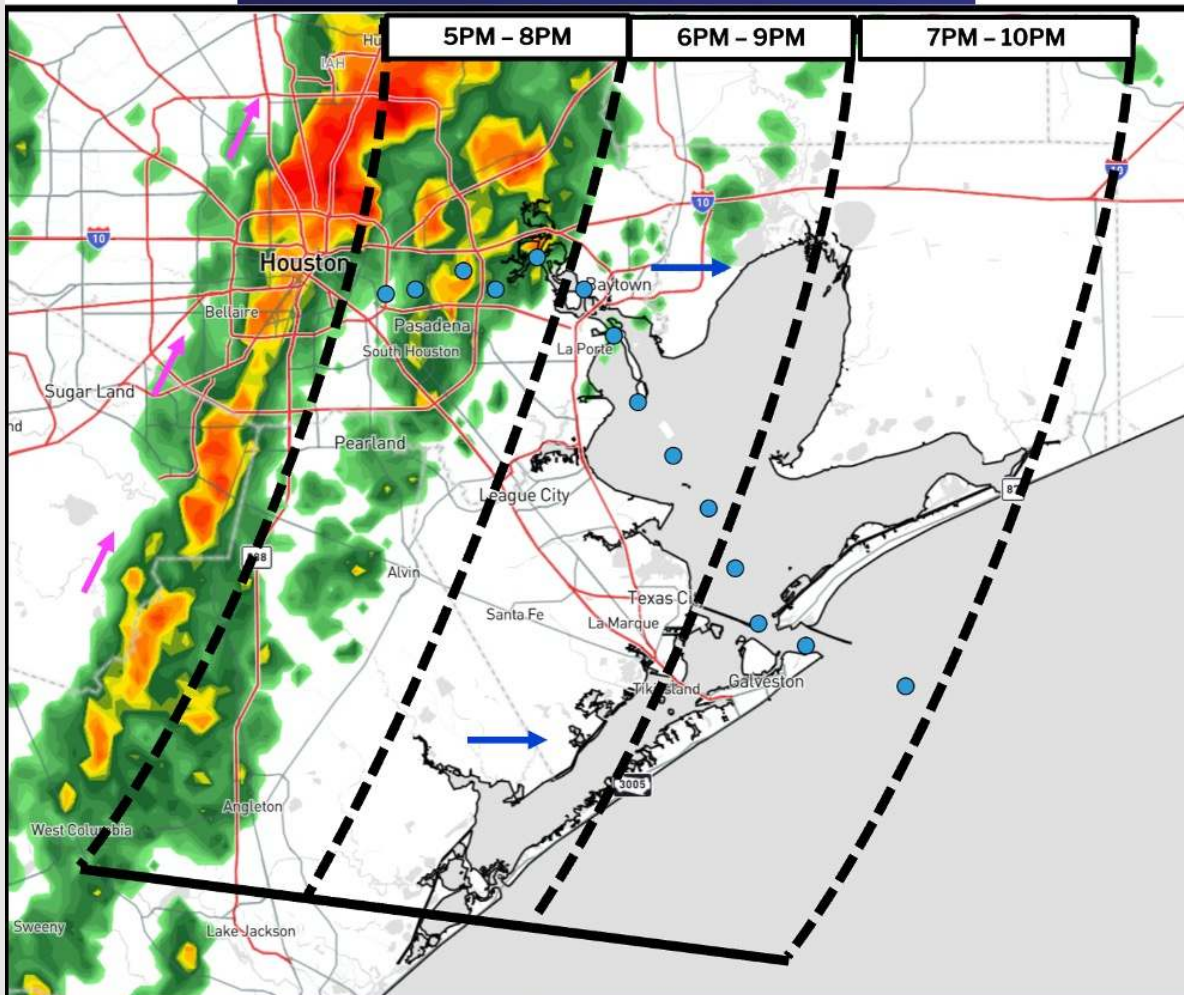


IMAGE NOTES:

- ✓ **Pink Arrows** = Storms are currently moving more northward; however, they will eventually push east.
- ✓ **Blue Arrows** = Storms / a "gust front" will keep 45-50kts risks continuing to progress eastward during mentioned timeframes.



Houston Pilots Forecast Package

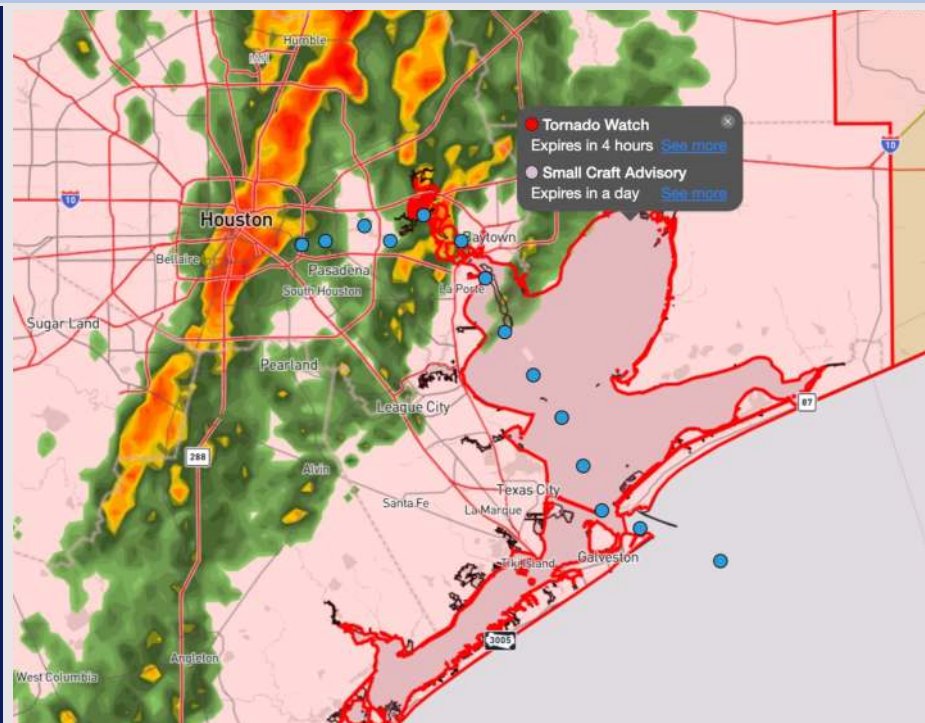


Updated: 4:55 PM CT
Saturday, April 5, 2025

Forecaster: John Kemper

Weather Headlines

- **An extended period of elevated winds and elevated wave heights will continue through Sunday.**
- **Zulu Port Trigger remains in effect for wave heights of 6'+ at the Boarding Station expected through SUN.**
- **Severe storm chances favored for this PM.**



Current Radar: 4:50 PM CT

As always, please do not hesitate to reach out to us with any forecast questions at **(317)-560-8122**. Press 1 for forecast questions.

You can also access real-time forecast updates and 24/7 meteorological chat assistance on your [Clarity](#) app. Click [here](#) for login assistance.



Houston Pilots Port Trigger Update



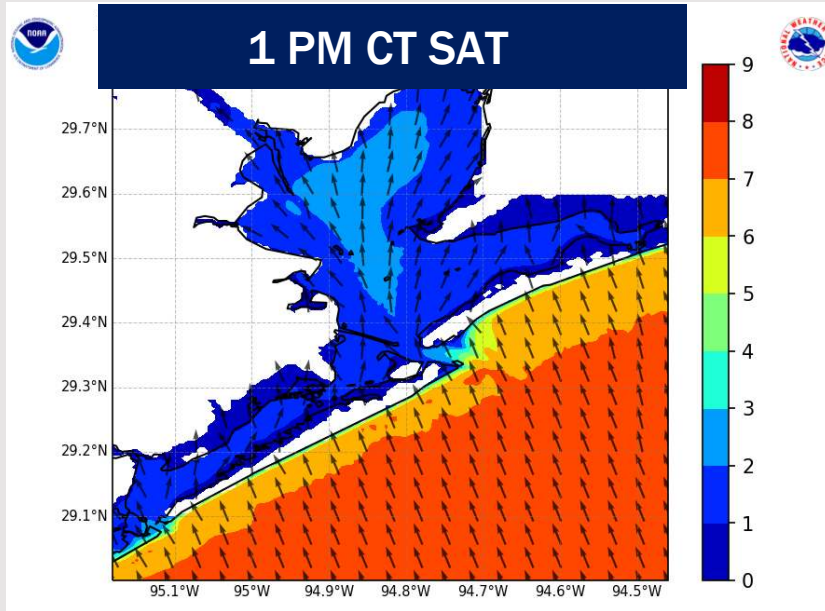
Port Condition	34 KTS+ Sustained Wind Trigger Reached at:	6 Foot Wave Trigger Reached at:	Time Remaining/Trigger Ends At:
Victor	—	—	—
Whiskey	—	—	—
X-Ray	—	—	—
Yankee	—	—	—
Zulu	—	CURRENT	4 AM SUN

Port Condition	Trigger Definition	Trigger Reached?
Victor	Hurricane entering/developing in Gulf of Mexico that's a threat to the area	N/A
Whiskey	72 hours prior to predicted sustained winds of 34+ KTS	N/A
X-Ray	48 hours prior to predicted sustained winds of 34+ KTS or 6' wave height	PAST
Yankee	24 hours prior to predicted sustained winds of 34+ KTS or 6' wave height	PAST
Zulu	12 hours prior to predicted sustained winds of 34+ KTS or 6' wave height	YES

NOTES:

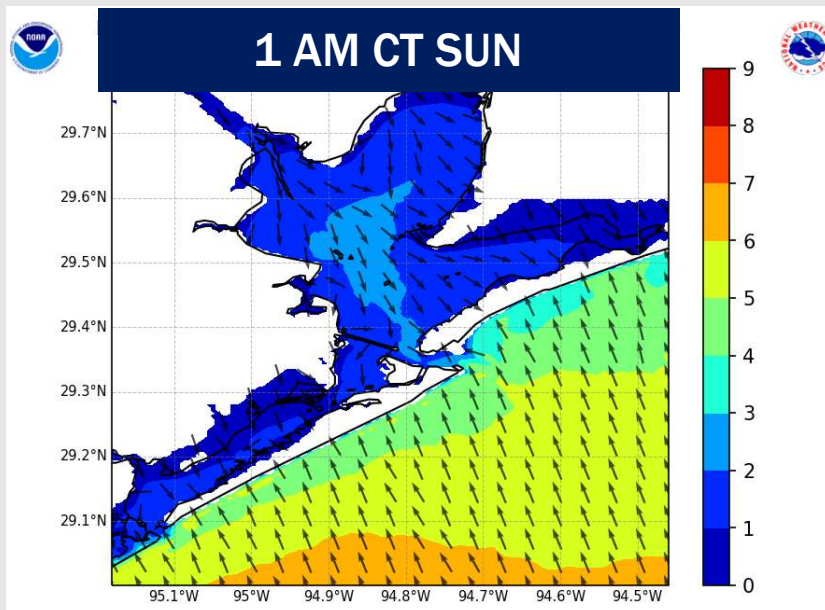
Max wave heights are currently around 6' at the Boarding Station. Max wave heights of 6' - 8' at the Boarding Station are expected to persist through today falling below 6' after 4 AM SUN.

Wave Height Forecast Update



Wave heights are currently reaching 6' – 7' at the Boarding Station due to elevated wind gusts.

Wave heights will continue to be elevated through the afternoon, reaching 7' - 8' at times at the Boarding Station during this timeframe.



Peak wave heights likely last through 4 PM SAT with waves at the Boarding Station briefly reaching 9'.

Wave heights are expected to dip below 6' post 4 AM SUN.

Houston Pilots Extended Range Visibility Report



Tuesday 4/8/25

No fog concerns for Tuesday.

Forecast Confidence



Thursday 4/10/25

No fog concerns for Thursday.

Forecast Confidence



Wednesday 4/9/25

No fog concerns for Wednesday.

Forecast Confidence



Chance for Fog

Tuesday AM	Unlikely
Tuesday PM	Unlikely
Wednesday AM	Unlikely
Wednesday PM	Unlikely
Thursday AM	Unlikely
Thursday PM	Unlikely

Houston Pilots Visibility Chart (miles)



Forecast Confidence



Chart is likely overdone

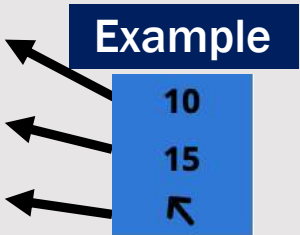
Visibility	Sat 1 pm	Sat 2 pm	Sat 3 pm	Sat 4 pm	Sat 5 pm	Sat 6 pm	Sat 7 pm	Sat 8 pm	Sat 9 pm	Sat 10 pm	Sat 11 pm	Sun 12 am	Sun 1 am	Sun 2 am	Sun 3 am	Sun 4 am	Sun 5 am	Sun 6 am	Sun 7 am	Sun 8 am	Sun 9 am	Sun 10 am	Sun 11 am	Sun 12 pm	
Houston Pilots N - 610 Bridge	4.9	4.9	3.9	2.5	3.9	3.9	3.9	3.9	4.9	4.9	4.9	6.9	10	10	10	10	10	10	10	10	10	10	10	10	
Houston Pilots M - Kinder 1	4.9	4.9	3.9	2.5	3.9	3.9	3.9	3.9	4.9	4.9	5.9	6.9	10	10	10	10	10	10	10	10	10	10	10	10	
Houston Pilots L - Greens Bayou	4.9	4.9	3.9	2.9	3.9	3.9	3.9	3.9	4.9	4.9	5.9	6.9	10	10	10	10	10	10	10	10	10	10	10	10	
Houston Pilots K - Shell Crude	4.9	4.9	3.9	2.9	3.9	3.9	3.9	3.9	4.9	4.9	5.9	6.9	10	10	10	10	10	10	10	10	10	10	10	10	
Houston Pilots J - Lynchburg Ferries	4.9	4.9	3.9	2.9	3.9	3.9	3.9	3.9	4.9	4.9	5.9	6.9	10	10	10	10	10	10	10	10	10	10	10	10	
Houston Pilots I - Exxon 3	4.9	4.9	4.9	2.9	2.9	3.9	3.9	3.9	4.9	4.9	5.9	6.9	10	10	10	10	10	10	10	10	10	10	10	10	
Houston Pilots H - Morgans Point	4.9	4.9	4.9	2.9	3.9	3.9	3.9	3.9	4.9	4.9	5.9	6.9	10	10	10	10	10	10	10	10	10	10	10	10	
Houston Pilots G - 75/76	3.9	3.9	3.9	2.9	3.9	2.9	2.5	2.9	3.9	4.9	4.9	6.9	7.9	10	10	10	10	9	10	9	8	6.9	10	10	10
Houston Pilots F - 63/64	3.9	3.9	3.9	2.9	3.9	2.9	2.5	2.9	3.9	4.9	4.9	6.9	7.9	10	10	10	10	9	10	9	8	5.9	10	10	10
Houston Pilots E - 51/52	3.9	3.9	2.9	2.9	3.9	2.9	2.5	2.9	3.9	4.9	4.9	5.9	6.9	7.9	8	8	8	9	7.9	8	5.9	9	10	10	
Houston Pilots D - 37/38	3.9	3.9	2.9	2.9	3.9	2.9	2	2.9	3.9	4.9	4.9	4.9	6.9	7.9	8	6.9	6.9	9	7.9	6.9	5.9	9	9	10	
Houston Pilots C - 25/26	3.9	3.9	2.9	2.9	3.9	3.9	2	2.9	3.9	3.9	4.9	4.9	4.9	6.9	8	9	6.9	9	6.9	9	5.9	9	9	10	
Houston Pilots B - 11/12	3.9	3.9	2.9	2.9	3.9	3.9	2.5	2.5	3.9	3.9	4.9	4.9	4.9	6.9	6.9	5.9	6.9	9	6.9	6.9	3.9	9	9	9	
Houston Pilots A - 1 & 2 Bravo	3.9	3	2.9	2.9	3.9	2.9	2.5	2.5	2.9	3.9	4.9	4.9	4.9	4.9	3.9	3.9	4.9	4.9	4.9	3.9	2.9	9	9	9	

NOTE: This is automated data that may/may not agree with the official BAM thinking that's found on the daily slides or special visibility report slides. This data should be used as a guide only

Houston Pilots Wind Chart



Sustained wind 10 Knots
Gusts 15 Knots
Wind from the SE



Wind	Sat 1 pm	Sat 2 pm	Sat 3 pm	Sat 4 pm	Sat 5 pm	Sat 6 pm	Sat 7 pm	Sat 8 pm	Sat 9 pm	Sat 10 pm	Sat 11 pm	Sun 12 am	Sun 1 am	Sun 2 am	Sun 3 am	Sun 4 am	Sun 5 am	Sun 6 am	Sun 7 am	Sun 8 am	Sun 9 am	Sun 10 am	Sun 11 am	Sun 12 pm
Houston Pilots N - 610 Bridge	15	15	15	14	13	13	12	10	10	13	13	15	15	15	15	15	15	15	15	14	14	14	14	14
	30	29	29	28	25	24	23	22	23	24	26	28	29	29	29	29	29	29	29	28	26	26	26	26
	↑	↑	↑	↗	→	→	↘	↘	↘	↘	↘	↘	↘	↘	↘	↘	↘	↘	↘	↘	↘	↘	↘	↘
Houston Pilots M - Kinder 1	15	15	15	14	13	13	12	10	10	13	13	14	15	15	15	15	15	15	15	14	14	14	14	14
	30	29	29	28	25	24	23	21	22	24	26	28	28	29	29	29	29	29	29	28	26	26	26	26
	↑	↑	↑	↗	→	→	↘	↘	↘	↘	↘	↘	↘	↘	↘	↘	↘	↘	↘	↘	↘	↘	↘	↘
Houston Pilots L - Greens Bayou	15	15	15	14	13	13	12	10	10	12	13	14	15	15	15	15	15	15	15	14	14	14	14	14
	30	29	29	28	25	24	23	21	22	23	25	26	28	28	28	28	28	28	28	26	26	26	26	26
	↑	↑	↑	↗	→	→	↘	↘	↘	↘	↘	↘	↘	↘	↘	↘	↘	↘	↘	↘	↘	↘	↘	↘
Houston Pilots K - Shell Crude	16	15	15	14	13	13	12	10	10	12	13	14	14	15	15	15	14	15	14	14	14	14	14	14
	30	29	29	28	25	24	23	21	21	22	25	26	26	28	28	28	28	28	28	26	26	26	26	26
	↑	↑	↑	↗	→	→	↘	↘	↘	↘	↘	↘	↘	↘	↘	↘	↘	↘	↘	↘	↘	↘	↘	↘
Houston Pilots J - Lynchburg Ferries	16	15	15	15	14	13	12	10	10	12	13	14	14	14	14	14	14	14	14	14	14	14	14	14
	30	29	29	28	25	24	23	21	21	22	24	26	26	26	26	26	26	26	26	25	25	25	26	25
	↑	↑	↑	↑	↗	→	↘	↘	↘	↘	↘	↘	↘	↘	↘	↘	↘	↘	↘	↘	↘	↘	↘	↘
Houston Pilots I - Exxon 3	17	17	17	16	15	15	14	13	14	15	16	17	18	20	20	20	20	20	20	18	17	17	16	16
	30	29	29	28	25	24	23	21	22	22	24	26	26	26	28	26	26	26	26	25	25	25	25	25
	↑	↑	↑	↑	↑	↗	→	→	↘	↘	↘	↘	↘	↘	↘	↘	↘	↘	↘	↘	↘	↘	↘	↘
Houston Pilots H - Morgans Point	17	17	17	17	15	15	14	13	14	15	16	17	18	18	20	20	18	18	18	17	17	17	16	15
	29	29	29	28	26	25	23	21	22	22	24	26	26	26	28	26	26	26	26	25	25	24	25	25
	↑	↑	↑	↑	↑	↗	→	↘	↘	↘	↘	↘	↘	↘	↘	↘	↘	↘	↘	↘	↘	↘	↘	↘
Houston Pilots G - 75/76	20	20	18	18	17	17	16	15	15	17	18	20	21	22	22	22	22	22	22	21	21	20	18	17
	32	31	31	31	29	28	25	22	23	24	26	28	29	30	30	30	30	30	30	29	29	28	26	28
	↑	↑	↑	↑	↑	↑	↗	→	↘	↘	↘	↘	↘	↘	↘	↘	↘	↘	↘	↘	↘	↘	↘	↘
Houston Pilots F - 63/64	20	20	20	20	17	17	16	15	15	17	17	20	21	22	22	22	22	22	22	21	21	20	18	18
	32	31	32	32	30	28	24	22	23	24	25	28	29	29	30	30	29	30	30	29	29	28	26	28
	↑	↑	↑	↑	↑	↑	↗	→	↘	↘	↘	↘	↘	↘	↘	↘	↘	↘	↘	↘	↘	↘	↘	↘
Houston Pilots E - 51/52	20	20	20	20	18	17	17	15	16	17	17	20	21	22	22	22	22	22	22	21	21	20	18	18
	32	31	32	32	30	29	25	23	24	24	25	26	29	30	30	30	30	31	30	30	29	28	29	29
	↑	↑	↑	↑	↑	↑	↗	→	↘	↘	↘	↘	↘	↘	↘	↘	↘	↘	↘	↘	↘	↘	↘	↘
Houston Pilots D - 37/38	20	20	20	20	18	17	16	15	15	17	17	20	21	22	22	22	22	23	22	22	21	20	20	20
	32	32	32	32	31	29	25	23	24	24	25	26	29	30	31	31	31	31	31	30	30	29	29	29
	↑	↑	↑	↑	↑	↑	↗	→	↘	↘	↘	↘	↘	↘	↘	↘	↘	↘	↘	↘	↘	↘	↘	↘
Houston Pilots C - 25/26	21	21	21	20	20	18	16	15	15	17	17	20	21	22	22	22	22	23	23	22	21	20	20	20
	32	32	32	32	30	29	25	23	24	24	25	28	29	31	31	31	31	32	32	31	31	30	29	29
	↑	↑	↑	↑	↑	↑	↗	→	↘	↘	↘	↘	↘	↘	↘	↘	↘	↘	↘	↘	↘	↘	↘	↘
Houston Pilots B - 11/12	20	20	20	20	20	17	16	15	15	16	16	17	20	21	22	22	22	22	22	21	21	20	20	20
	31	31	31	32	30	28	25	23	24	24	24	26	28	30	30	31	31	31	31	30	30	28	29	29
	↑	↑	↑	↑	↑	↑	↗	→	↘	↘	↘	↘	↘	↘	↘	↘	↘	↘	↘	↘	↘	↘	↘	↘
Houston Pilots A - 1 & 2 Bravo	22	22	22	22	21	20	18	17	17	18	18	20	22	23	24	24	24	24	24	23	22	22	22	22
	35	35	35	33	32	31	29	28	26	26	26	29	31	32	33	33	33	33	33	33	32	31	31	31
	↑	↑	↑	↑	↑	↑	↑	↗	→	↘	↘	↘	↘	↘	↘	↘	↘	↘	↘	↘	↘	↘	↘	↘

NOTE: This is automated data that may/may not agree with the official BAM thinking that's found on the daily slides.
This data should be used as a guide only.

Houston Pilots: SAT. 4/5/2025

Forecast Discussion

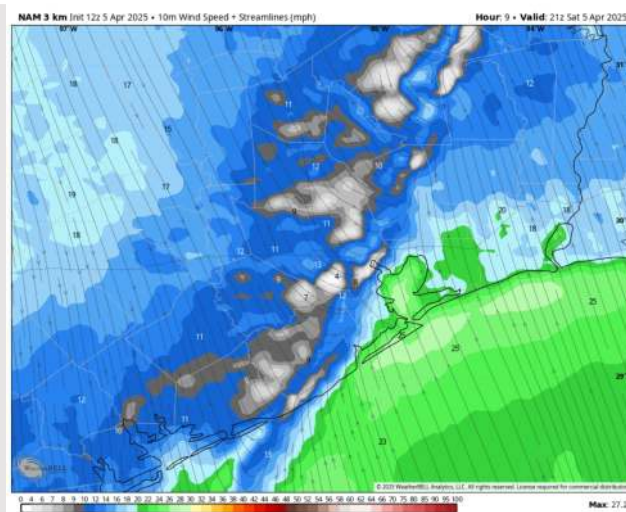
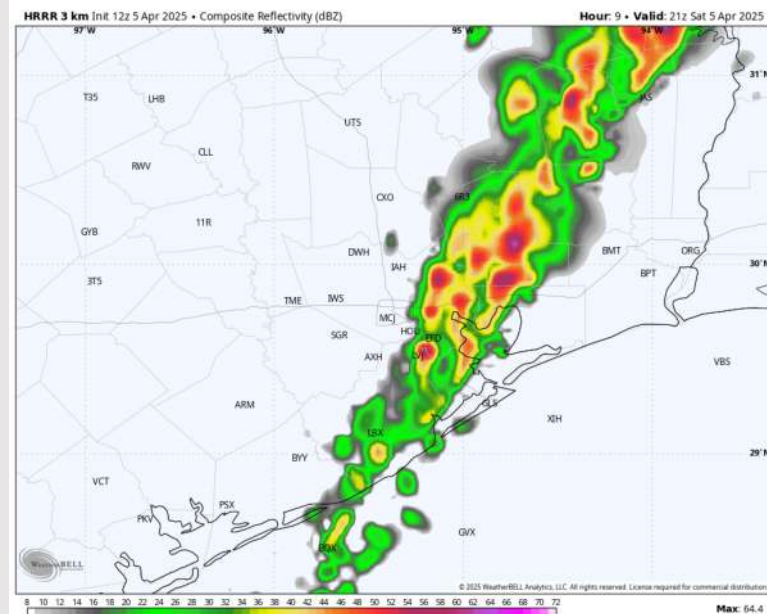
Precip: Isolated showers will be possible for all stations through 4 PM. Come 4 PM a line of storms will begin to work through for all stations exiting by 9 PM. Storms will have the potential to be strong to severe with **Damaging winds of up to 50 kts and large hail will be the primary risks.**

Wind: Winds will be out of the S through 4 PM then will out of the NW for the rest of the day. **N of Morgan's Point:** Winds will be decreasing to 12 – 18 kts through the rest of the day. **S of Morgan's Point:** Winds will be at 19 – 23 kts for the rest of the day. **Non-storm gusts of up to 35 kts will be possible S of Morgan's Point through 5PM.**

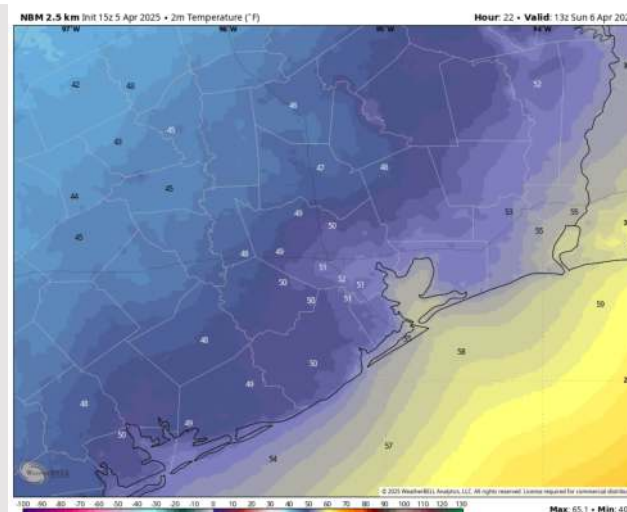
Low Temps: **N of Morgan's Point:** Low 50s F. **S of Morgan's Point:** Mid 50s F.

Visibility: Fog is not favored this evening however visibility can be reduced from heavy rain and storms

Precip Image: 4 PM CT



Wind Speed:
4 PM CT



Low Temps
SUN AM

Houston Pilots: SUN. 4/6/2025

Forecast Discussion

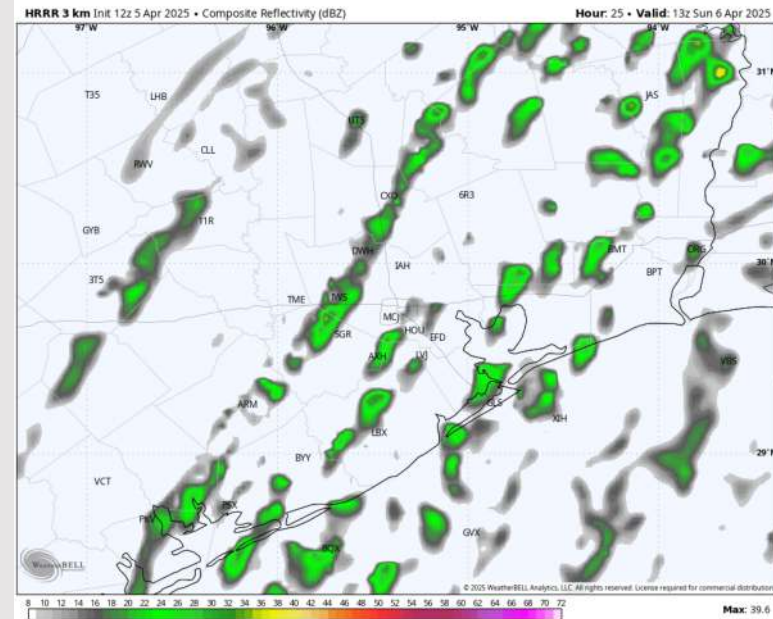
Precip: Scattered showers and storms (40%) in play for all Stations through 6 PM. No severe risks are favored however lightning will be in play with any storms.

Wind: Winds will be out of the NW throughout the day. **N of Morgan's Point:** Winds will be at 5 - 10 kts throughout Sunday. **S of Morgan's Point:** Winds will be at 16 - 24 kts throughout the day. **Wind gusts of near 20 - 25 kts will be in play for N of Morgan's Point throughout the day, while Stations S of Morgan's Point will see 25 - 30 kts wind gusts.**

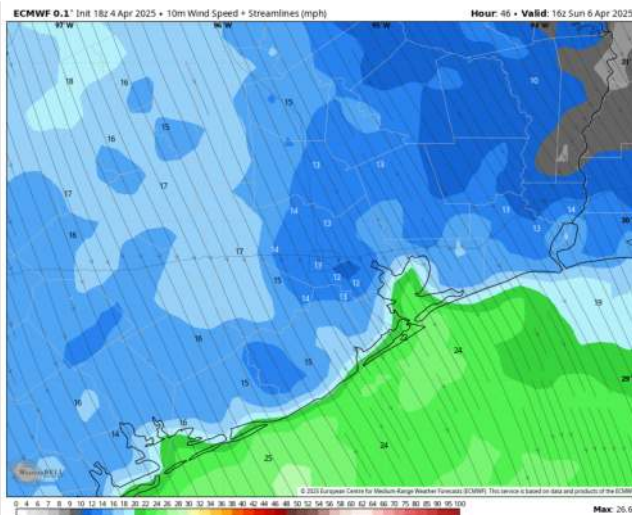
High Temps: **N of Morgan's Point:** Low 60s F. **S of Morgan's Point:** Low 60s F.

Visibility: No fog concerns for Sunday

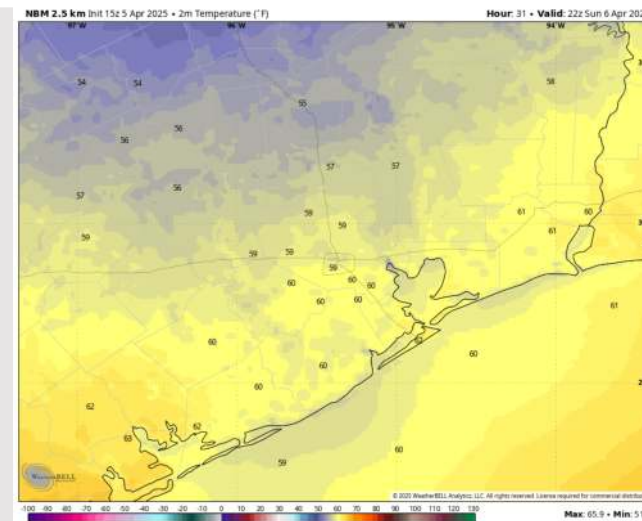
Precip Image: 8 AM CT



Wind Speed
11 AM CT



High Temps
Sunday



Houston Pilots: MON. 4/7/2025

Forecast Discussion

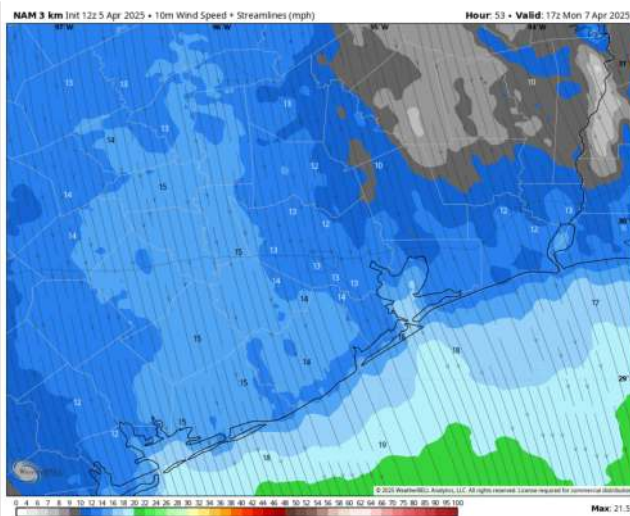
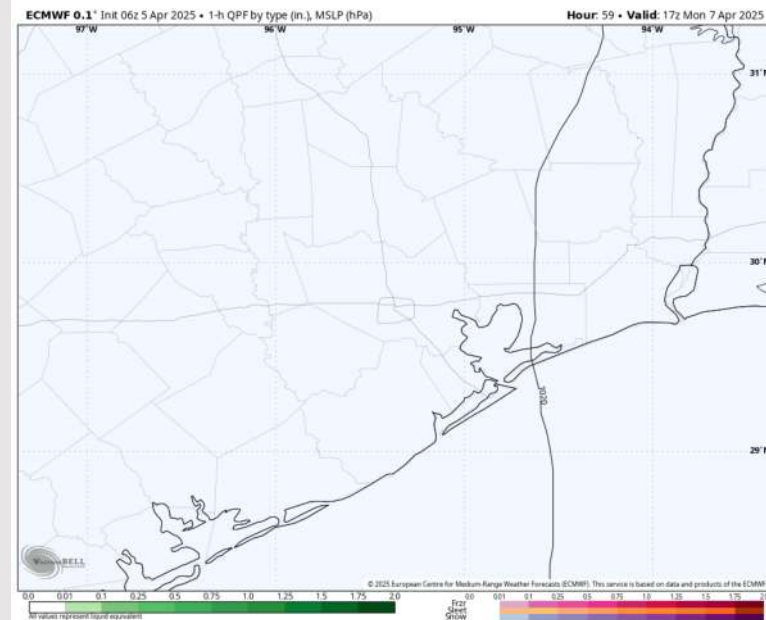
Precip: Dry conditions are favored through the entire day on Monday.

Wind: Winds will be out of the NW throughout Monday. **N of Morgan's Point:** Winds will be at 5 –11 kts throughout the day. **S of Morgan's Point:** Winds will be at 12 - 20 kts throughout the day. **Gusts up to 30 kts will be in play for Stations S of Morgan's Point throughout Monday.**

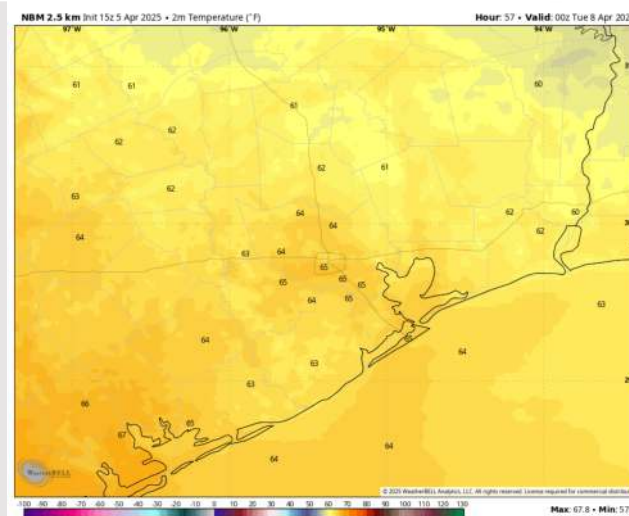
High Temps: **N of Morgan's Point:** Mid 60s F. **S of Morgan's Point:** Mid 60s F.

Visibility: No fog concerns for Monday.

Precip Image: 12 PM CT



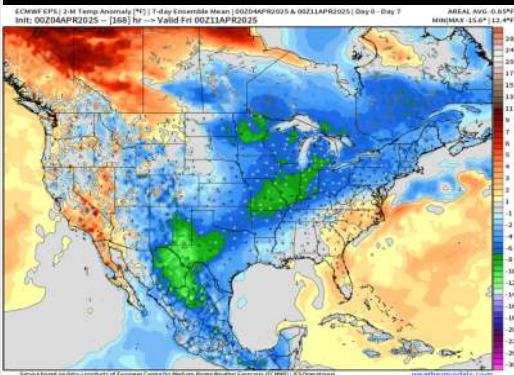
Wind Speed:
12 PM CT



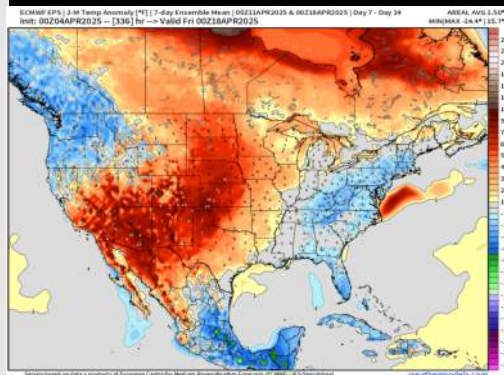
High Temps
Monday

Houston Pilots: 4/5/25

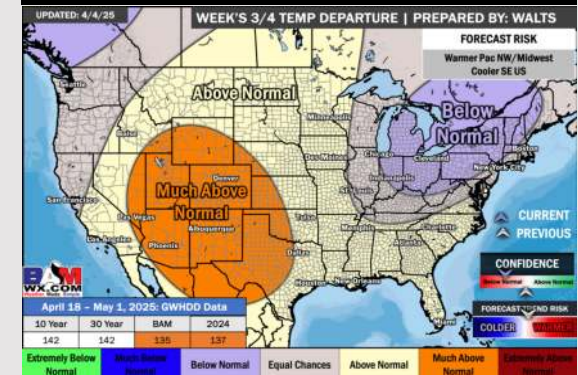
Next 7 Day Temperature Departure



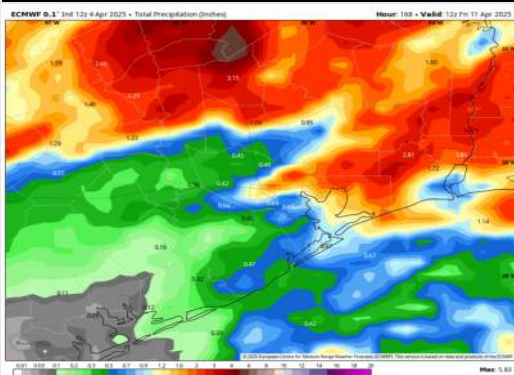
8-14 Day Temperature Departure



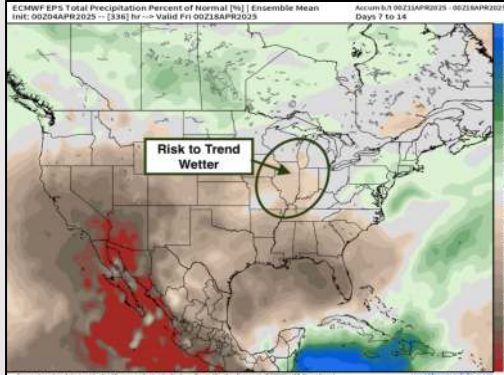
15-30 Day Temperature Departure



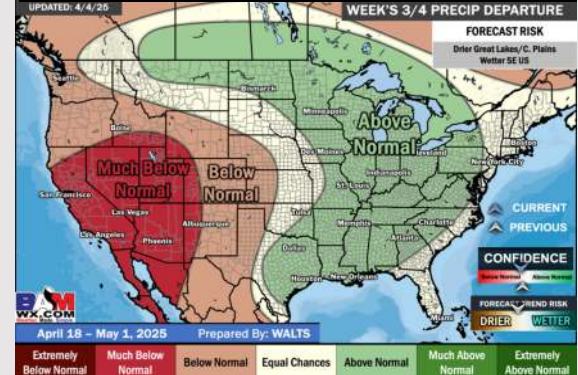
Next 7 Day Total Precipitation



8-14 Day % of Average Precip.



15-30 Day % of Average Precip.



- Temps are expected to be slightly below normal for the next 7 days. Scattered showers and storms favored this weekend.
- Near normal temps and much below normal rainfall are expected for week 2.
- Above normal temperatures and above normal precipitation chances are expected for the weeks $\frac{3}{4}$ timeframe.