

# Houston Pilots Forecast Package



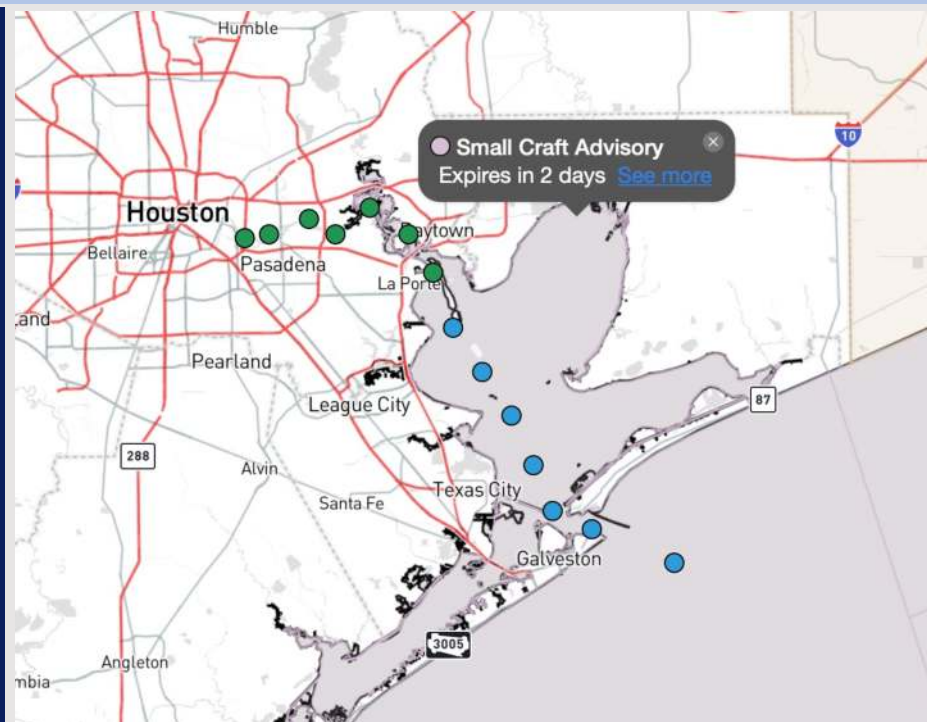
Updated: 11:00 PM CT

Friday, April 4, 2025

Forecaster: Tyler Riggles

## Weather Headlines

- **An extended period of elevated winds and elevated wave heights will continue through the weekend.**
- **Zulu Port Trigger remains in effect for wave heights of 6'+ at the Boarding Station expected Today - SUN.**
- **Severe storm chances favored for this PM.**



**Current Radar: 10:56 PM CT**

As always, please do not hesitate to reach out to us with any forecast questions at **(317)-560-8122**. Press 1 for forecast questions.

You can also access real-time forecast updates and 24/7 meteorological chat assistance on your [Clarity](#) app. Click [here](#) for login assistance.



# Houston Pilots Port Trigger Update



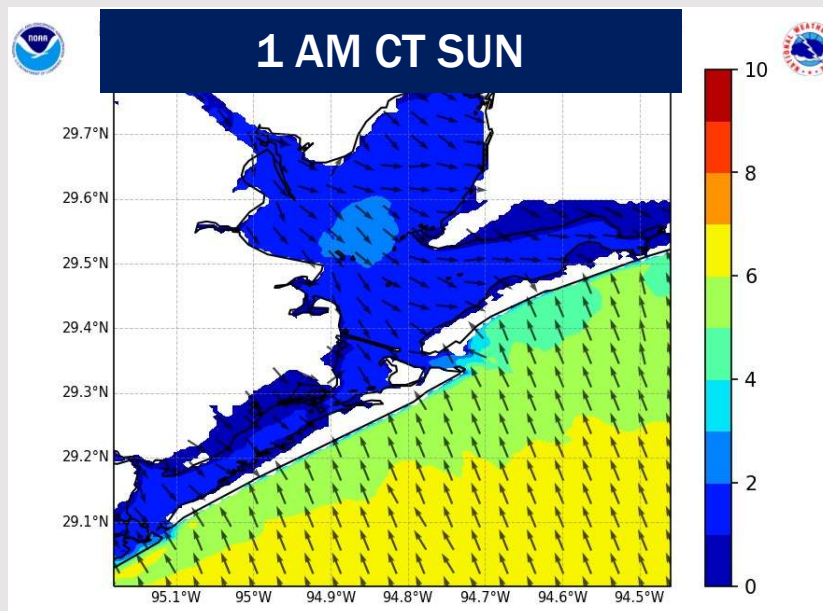
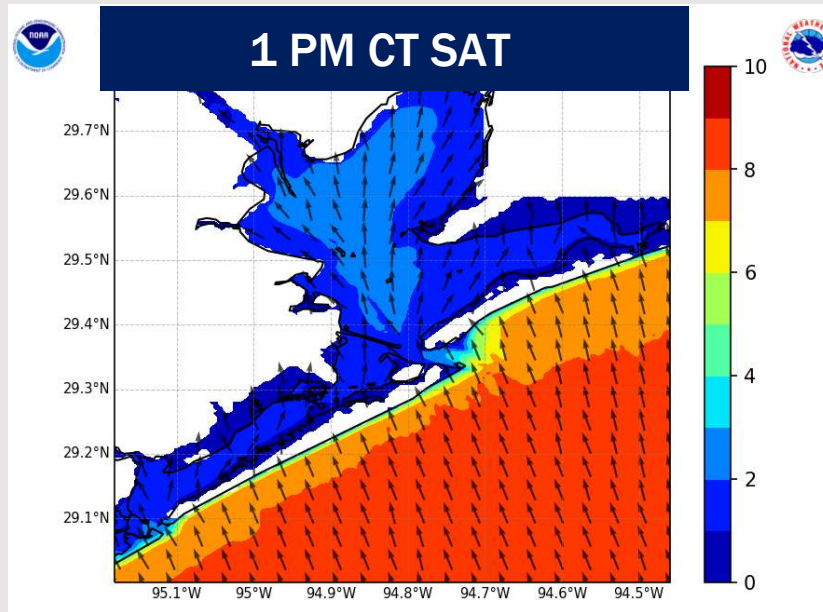
Port Condition	34 KTS+ Sustained Wind Trigger Reached at:	6 Foot Wave Trigger Reached at:	Time Remaining/Trigger Ends At:
Victor	—	—	—
Whiskey	—	—	—
X-Ray	—	—	—
Yankee	—	—	—
Zulu	—	CURRENT	7 AM SUN

Port Condition	Trigger Definition	Trigger Reached?
Victor	Hurricane entering/developing in Gulf of Mexico that's a threat to the area	N/A
Whiskey	72 hours prior to predicted sustained winds of 34+ KTS	N/A
X-Ray	48 hours prior to predicted sustained winds of 34+ KTS or 6' wave height	PAST
Yankee	24 hours prior to predicted sustained winds of 34+ KTS or 6' wave height	PAST
Zulu	12 hours prior to predicted sustained winds of 34+ KTS or 6' wave height	YES

## NOTES:

Max wave heights are currently around 6' at the Boarding Station. Max wave heights of 6' - 9' at the Boarding Station are expected to persist through today falling below 6' after 7 AM SUN.

# Wave Height Forecast Update



Wave heights are currently reaching 6' – 7' at the Boarding Station due to elevated wind gusts.

Wave heights will continue to be elevated through Saturday, reaching 7' - 8' at times at the Boarding Station during this timeframe.

Peak wave heights likely to occur between 7 AM – 1 PM SAT with waves at the Boarding Station briefly reaching 9'.

Wave heights are expected to dip below 6' post 7 AM SUN.

# Houston Pilots Extended Range Visibility Report



Tuesday 4/8/25

No fog concerns for Tuesday.

### Forecast Confidence



Thursday 4/10/25

No fog concerns for Thursday.

### Forecast Confidence



Wednesday 4/9/25

No fog concerns for Wednesday.

### Forecast Confidence



### Chance for Fog

Tuesday AM	Unlikely
Tuesday PM	Unlikely
Wednesday AM	Unlikely
Wednesday PM	Unlikely
Thursday AM	Unlikely
Thursday PM	Unlikely

# Houston Pilots Visibility Chart (miles)



Chart is likely overdone

Visibility	Sat 12 am	Sat 1 am	Sat 2 am	Sat 3 am	Sat 4 am	Sat 5 am	Sat 6 am	Sat 7 am	Sat 8 am	Sat 9 am	Sat 10 am	Sat 11 am	Sat 12 pm	Sat 1 pm	Sat 2 pm	Sat 3 pm	Sat 4 pm	Sat 5 pm	Sat 6 pm	Sat 7 pm	Sat 8 pm	Sat 9 pm	Sat 10 pm	Sat 11 pm
Houston Pilots N - 610 Bridge	4.9	4.9	4.9	4.9	4.9	4.9	4.9	5.9	4.9	3.9	3.9	3.9	3.9	3.9	3.9	3.9	2.9	3	3	2.5	2.9	3.9	3.9	4.9
Houston Pilots M - Kinder 1	4.9	4.9	4.9	4.9	4.9	4.9	4.9	5.9	4.9	3.9	3.9	3.9	3.9	3.9	3.9	3.9	2.9	3	3	2.5	2.9	3.9	3.9	4.9
Houston Pilots L - Greens Bayou	4.9	4.9	4.9	4.9	4.9	4.9	4.9	5.9	4.9	3.9	3.9	3.9	3.9	3.9	3.9	3.9	2.9	3	3	2.5	2.9	3.9	3.9	4.9
Houston Pilots K - Shell Crude	4.9	4.9	4.9	4.9	4.9	4.9	4.9	5.9	4.9	3.9	3.9	3.9	3.9	3.9	3.9	3.9	2.9	3	3	2.5	2.9	3.9	3.9	4.9
Houston Pilots J - Lynchburg Ferries	4.9	4.9	4.9	4.9	4.9	4.9	4.9	5.9	4.9	3.9	3.9	3.9	3.9	3.9	3.9	3.9	2.9	3	3	2.5	2.9	3.9	3.9	4.9
Houston Pilots I - Exxon 3	4.9	4.9	4.9	4.9	4.9	4.9	4.9	5.9	4.9	3.9	3.9	3.9	3.9	3.9	3.9	3.9	2.9	3	3	2.5	2.9	3.9	3.9	4.9
Houston Pilots H - Morgans Point	4.9	4.9	4.9	4.9	4.9	4.9	4.9	5.9	4.9	3.9	3.9	3.9	3.9	3.9	3.9	3.9	2.9	3	3	2.5	2.9	3.9	3.9	3.9
Houston Pilots G - 75/76	4.9	4.9	4.9	4.9	4.9	4.9	5.9	5.9	4.9	3.9	3.9	3.9	3.9	3.9	3.9	3.9	2.9	3	3	2.5	2.9	2.9	3.9	8
Houston Pilots F - 63/64	4.9	4.9	4.9	4.9	4.9	4.9	5.9	5.9	4.9	3.9	3.9	3.9	3.9	3.9	3.9	3.9	2.9	3	3	2.5	2.9	2.9	3.9	7
Houston Pilots E - 51/52	4.9	4.9	4.9	4.9	4.9	4.9	5.9	5.9	4.9	3.9	3.9	3.9	3.9	3.9	3.9	3.9	2.9	3	3	2.5	2.9	2.9	3.9	7
Houston Pilots D - 37/38	4.9	4.9	4.9	4.9	4.9	4.9	5.9	5.9	5.9	3.9	3.9	3.9	3.9	3.9	3.9	3.9	2.9	3	3	2.5	2.9	2.9	3.9	6
Houston Pilots C - 25/26	4.9	4.9	4.9	4.9	4.9	4.9	5.9	6.9	5.9	3.9	3.9	3.9	3.9	3.9	3.9	3.9	2.9	3	3	2.5	2.9	2.9	3.9	6
Houston Pilots B - 11/12	3.9	3.9	3.9	4.9	4.9	4.9	5.9	5.9	4.9	3.9	3.9	3.9	3.9	3.9	2.9	2.9	2.9	2.5	2.5	2.5	2.5	2.9	2.9	5
Houston Pilots A - 1 & 2 Bravo	3.9	3.9	3.9	3.9	3.9	4.9	4.9	5.9	4.9	2.9	2.9	2.9	2.9	3.9	2.9	2.9	2.5	2.5	2.5	2.5	2.5	2.9	2.9	4

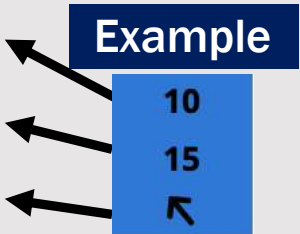
NOTE: This is automated data that may/may not agree with the official BAM thinking that's found on the daily slides or special visibility report slides. This data should be used as a guide only



# Houston Pilots Wind Chart



Sustained wind 10 Knots  
Gusts 15 Knots  
Wind from the SE



Wind	Sat 12 am	Sat 1 am	Sat 2 am	Sat 3 am	Sat 4 am	Sat 5 am	Sat 6 am	Sat 7 am	Sat 8 am	Sat 9 am	Sat 10 am	Sat 11 am	Sat 12 pm	Sat 1 pm	Sat 2 pm	Sat 3 pm	Sat 4 pm	Sat 5 pm	Sat 6 pm	Sat 7 pm	Sat 8 pm	Sat 9 pm	Sat 10 pm	Sat 11 pm
Houston Pilots N - 610 Bridge	15	13	13	13	13	13	13	13	13	14	15	15	16	16	16	16	15	14	14	13	12	12	13	13
	29	28	26	26	26	26	28	26	26	28	30	30	31	32	32	32	31	28	28	25	23	23	25	26
	↗	↗	↗	↗	↗	↗	↗	↗	↗	↗	↗	↗	↗	↗	↗	↗	↗	↗	↗	↗	↘	↘	↘	↘
Houston Pilots M - Kinder 1	15	14	13	13	13	13	13	13	13	14	15	15	16	16	16	16	15	14	14	13	10	12	13	13
	29	28	26	26	26	26	28	26	26	28	30	30	31	32	32	32	31	28	28	25	23	23	24	26
	↗	↗	↗	↗	↗	↗	↗	↗	↗	↗	↗	↗	↗	↗	↗	↗	↗	↗	↗	↗	↘	↘	↘	↘
Houston Pilots L - Greens Bayou	15	13	13	13	13	13	13	13	13	14	15	15	16	17	16	16	15	15	14	13	10	12	13	13
	29	28	26	26	26	26	28	28	28	28	30	30	31	32	31	31	30	28	28	25	23	22	24	25
	↗	↗	↗	↗	↗	↗	↗	↗	↗	↗	↗	↗	↗	↗	↗	↗	↗	↗	↗	↗	↘	↘	↘	↘
Houston Pilots K - Shell Crude	15	13	13	13	13	13	13	13	13	14	15	15	17	17	17	16	15	14	14	13	10	12	12	13
	29	28	26	26	26	28	28	28	28	29	30	31	32	32	31	31	30	28	28	25	22	22	23	24
	↗	↗	↗	↗	↗	↗	↗	↗	↗	↗	↗	↗	↗	↗	↗	↗	↗	↗	↗	↗	↘	↘	↘	↘
Houston Pilots J - Lynchburg Ferries	14	13	13	13	13	13	13	13	13	14	15	15	17	17	17	16	15	15	14	13	10	10	12	13
	29	28	25	26	26	26	28	28	28	28	30	30	31	32	31	31	30	28	28	25	22	22	23	24
	↗	↗	↗	↗	↗	↗	↗	↗	↗	↗	↗	↗	↗	↗	↗	↗	↗	↗	↗	↗	↘	↘	↘	↘
Houston Pilots I - Exxon 3	20	17	17	17	17	17	18	17	17	18	18	18	20	18	18	17	17	16	16	15	14	15	15	16
	29	28	26	28	26	28	28	28	28	28	29	29	31	32	30	31	29	28	26	25	23	22	23	24
	↗	↗	↗	↗	↗	↗	↗	↗	↗	↗	↗	↗	↗	↗	↗	↗	↗	↗	↗	↗	↘	↘	↘	↘
Houston Pilots H - Morgans Point	18	17	17	17	17	17	17	17	17	17	18	18	20	18	18	17	17	16	16	15	14	15	15	15
	29	28	26	28	26	26	28	28	28	28	29	29	30	31	31	31	30	28	28	25	23	22	23	24
	↗	↗	↗	↗	↗	↗	↗	↗	↗	↗	↗	↗	↗	↗	↗	↗	↗	↗	↗	↗	↘	↘	↘	↘
Houston Pilots G - 75/76	21	20	20	20	20	21	21	20	20	21	21	21	22	21	20	20	20	18	17	17	16	16	17	17
	31	30	29	30	30	30	31	31	29	31	32	32	33	33	32	32	32	31	30	28	24	24	25	26
	↗	↗	↗	↗	↗	↗	↗	↗	↗	↗	↗	↗	↗	↗	↗	↗	↗	↗	↗	↗	↘	↘	↘	↘
Houston Pilots F - 63/64	21	20	20	20	21	21	21	21	20	21	21	21	21	21	21	21	21	18	17	17	16	16	17	17
	30	29	29	29	30	30	31	31	29	31	31	31	32	33	33	33	32	31	30	28	24	24	25	25
	↗	↗	↗	↗	↗	↗	↗	↗	↗	↗	↗	↗	↗	↗	↗	↗	↗	↗	↗	↗	↘	↘	↘	↘
Houston Pilots E - 51/52	20	20	20	20	21	21	21	21	20	21	21	21	21	21	21	21	20	20	18	17	16	16	17	17
	30	30	29	30	31	31	32	31	30	32	32	32	33	33	33	32	32	31	30	28	24	24	25	25
	↗	↗	↗	↗	↗	↗	↗	↗	↗	↗	↗	↗	↗	↗	↗	↗	↗	↗	↗	↗	↘	↘	↘	↘
Houston Pilots D - 37/38	21	20	20	21	21	21	22	21	20	21	22	21	21	22	21	21	20	20	18	17	16	16	17	17
	31	30	29	31	32	32	32	32	31	32	33	33	33	33	33	32	32	31	30	28	24	24	25	25
	↗	↗	↗	↗	↗	↗	↗	↗	↗	↗	↗	↗	↗	↗	↗	↗	↗	↗	↗	↗	↘	↘	↘	↘
Houston Pilots C - 25/26	20	20	20	20	21	21	22	21	20	21	22	21	22	22	22	21	20	20	18	17	16	16	17	17
	31	31	30	31	32	32	33	33	31	33	33	33	33	33	33	32	32	31	30	28	24	24	25	25
	↗	↗	↗	↗	↗	↗	↗	↗	↗	↗	↗	↗	↗	↗	↗	↗	↗	↗	↗	↗	↘	↘	↘	↘
Houston Pilots B - 11/12	20	20	18	20	20	20	20	20	20	20	20	20	21	21	21	20	20	18	17	16	15	15	15	16
	30	30	29	31	31	31	32	32	31	32	32	32	32	32	32	32	32	30	29	26	24	24	24	25
	↗	↗	↗	↗	↗	↗	↗	↗	↗	↗	↗	↗	↗	↗	↗	↗	↗	↗	↗	↗	↘	↘	↘	↘
Houston Pilots A - 1 & 2 Bravo	22	22	22	22	23	23	23	23	22	23	22	22	23	23	22	22	22	21	20	18	17	17	17	18
	33	33	32	33	35	35	36	36	35	36	36	35	36	36	36	36	35	33	32	31	29	26	28	26
	↗	↗	↗	↗	↗	↗	↗	↗	↗	↗	↗	↗	↗	↗	↗	↗	↗	↗	↗	↗	↘	↘	↘	↘

NOTE: This is automated data that may/may not agree with the official BAM thinking that's found on the daily slides.  
This data should be used as a guide only.

# Houston Pilots: SAT. 4/5/2025

## Forecast Discussion

**Precip:** By 12 PM, scattered storms will begin to work through. By 7 PM, the main line will reach the 610 Bridge where it will continue to push SE. Additional scattered activity will continue then for the rest of the PM.

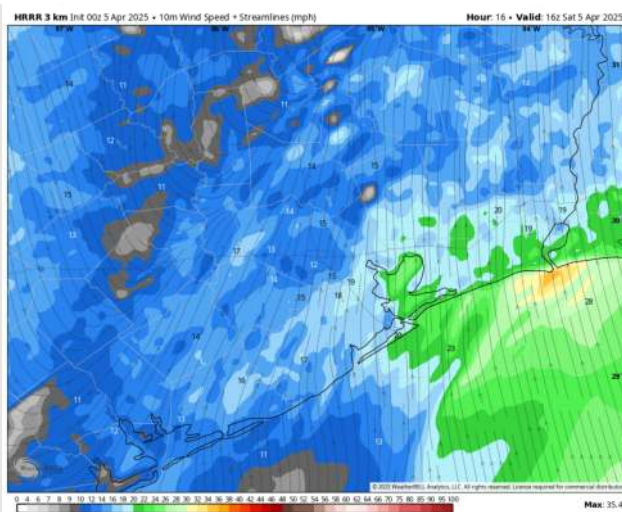
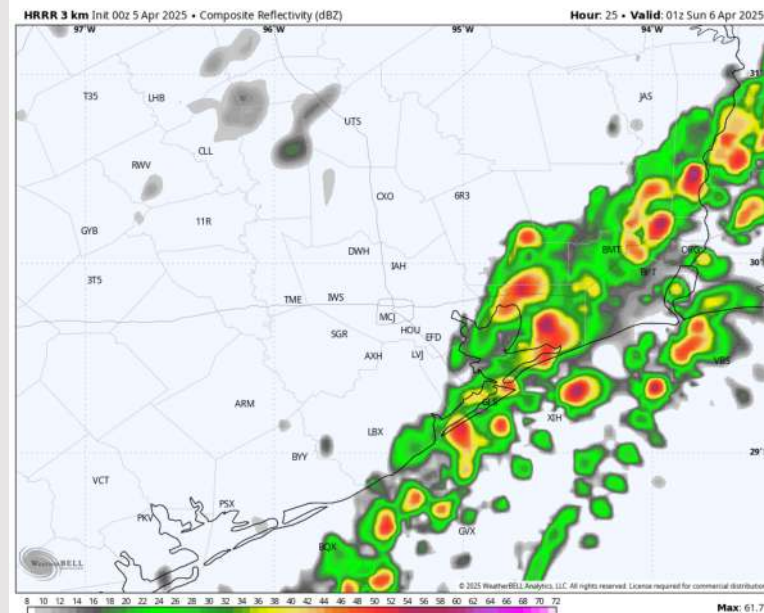
**Damaging winds of up to 50 kts and large hail will be the primary risks.**

**Wind:** Winds will be out of the S/SSW throughout most of the day, shifting out of the NW quickly after 9PM. **N of Morgan's Point:** Winds will be decreasing to 10 – 14 kts throughout the day. **S of Morgan's Point:** Winds will be at 20 – 25 kts for the entire day. **Non-storm gusts of up to 35 kts will be possible S of Morgan's Point through 5PM.**

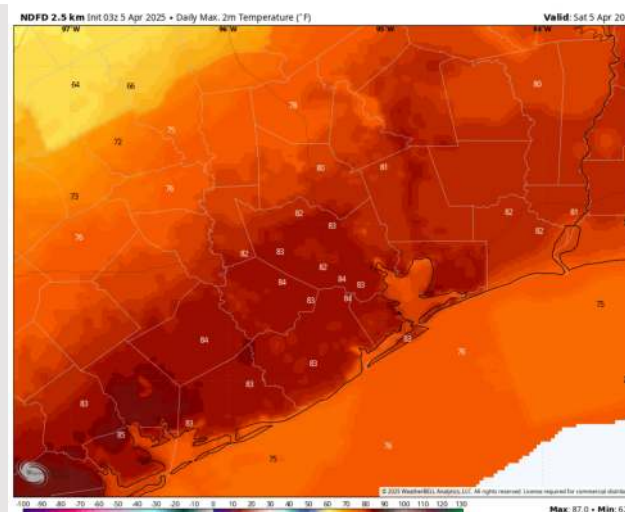
**High Temps:** **N of Morgan's Point:** Low to Mid 80s F. **S of Morgan's Point:** Mid 70s F.

**Visibility:** Fog is not favored for today due to high winds.

## Precip Image: 8 PM CT



**Wind Speed:**  
11 AM CT



**High Temps**  
Today



# Houston Pilots: SUN. 4/6/2025

## Forecast Discussion

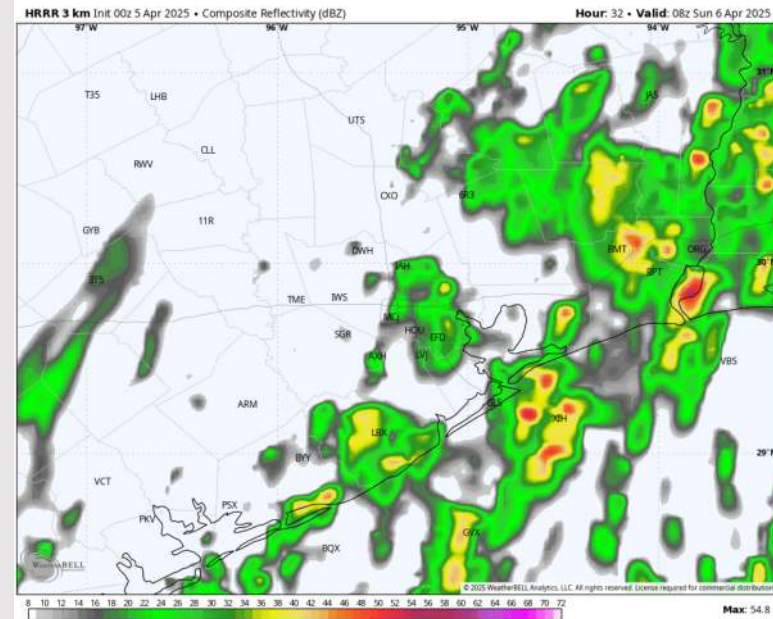
**Precip:** Scattered showers and storms (40%) in play for all Stations through 9 AM. No severe risks are favored however lightning will be in play with any storms.

**Wind:** Winds will be out of the NW throughout the day. **N of Morgan's Point:** Winds will be at 5 - 10 kts throughout Sunday. **S of Morgan's Point:** Winds will be at 15 - 20 kts throughout the day. **Wind gusts of near 20 - 25 kts will be in play for N of Morgan's Point throughout the day, while Stations S of Morgan's Point will see 25 - 30 kts wind gusts.**

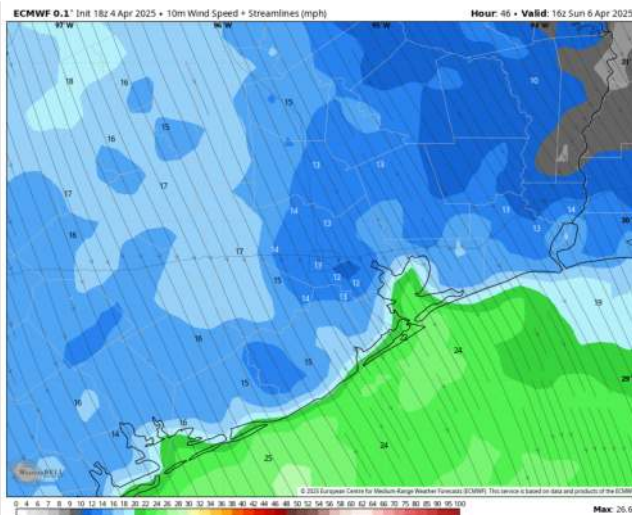
**High Temps:** **N of Morgan's Point:** Mid 60s F. **S of Morgan's Point:** Low 60s F.

**Visibility:** No fog concerns for Sunday due to high winds.

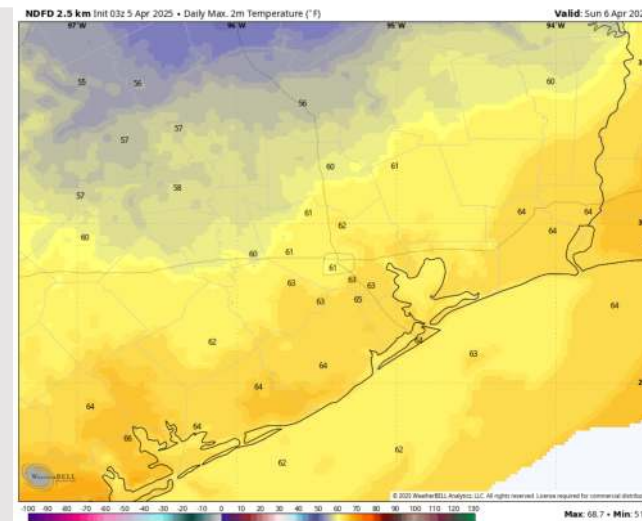
## Precip Image: 3 AM CT



Wind Speed  
11 AM CT



High Temps  
Sunday





# Houston Pilots: MON. 4/7/2025

## Forecast Discussion

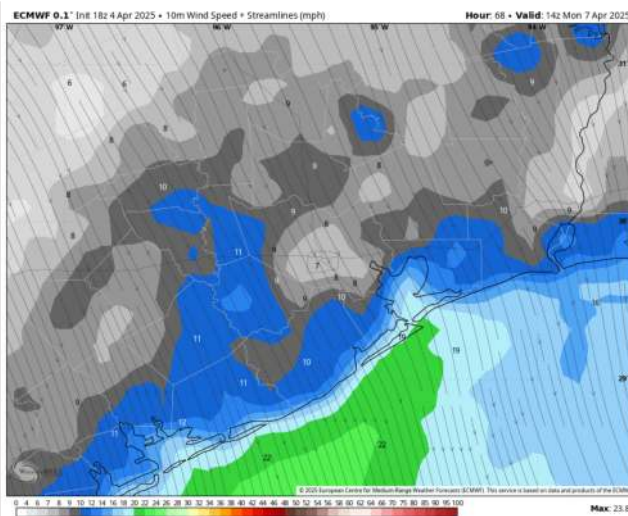
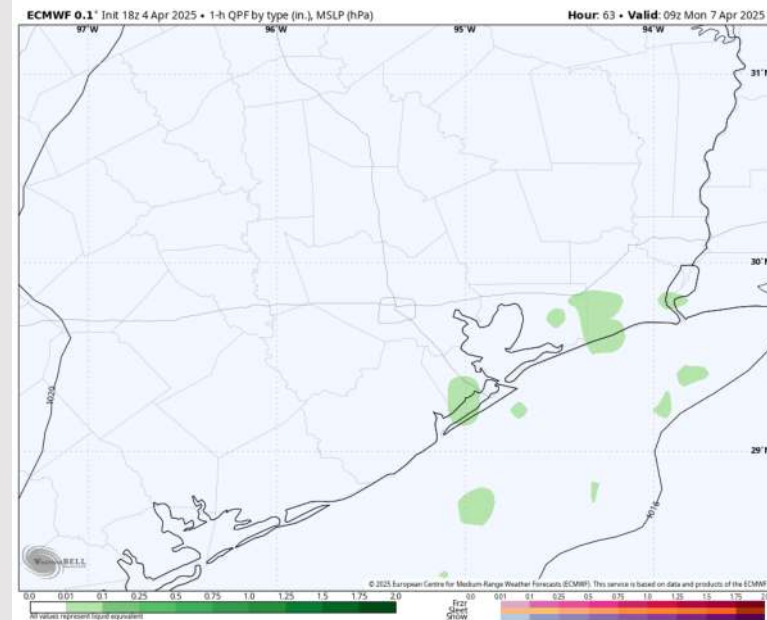
**Precip:** Hit/miss (30%) light showers will briefly be in play for Stations S of Morgan's Point between 4 – 7 AM.

**Wind:** Winds will be out of the NW throughout Monday. **N of Morgan's Point:** Winds will be at 4 – 9 kts throughout the day. **S of Morgan's Point:** Winds will be at 13 - 18 kts throughout the day. **Gusts up to 25 kts will be in play for Stations S of Morgan's Point throughout Monday.**

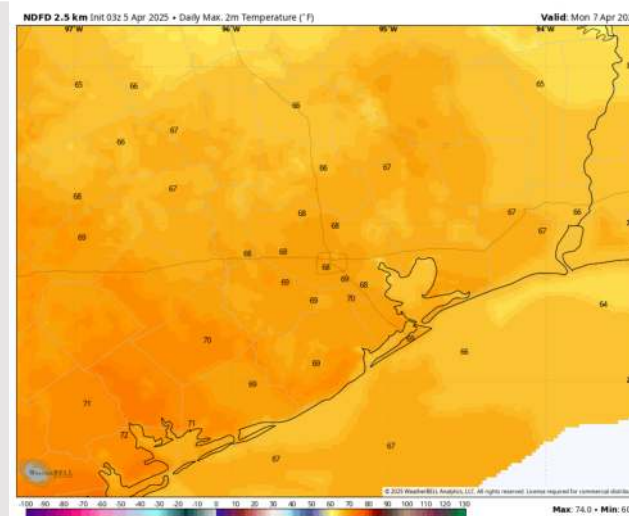
**High Temps:** **N of Morgan's Point:** Near 70 F. **S of Morgan's Point:** Mid 60s F.

**Visibility:** No fog concerns for Monday.

## Precip Image: 4 AM CT



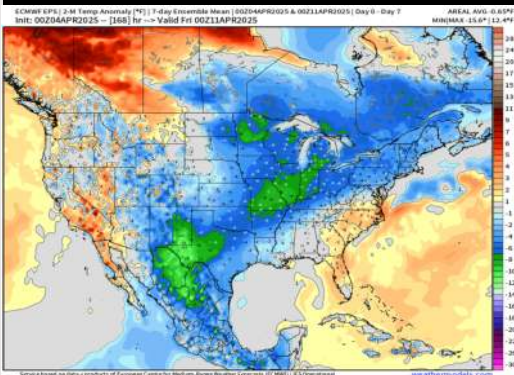
**Wind Speed:**  
3 PM CT



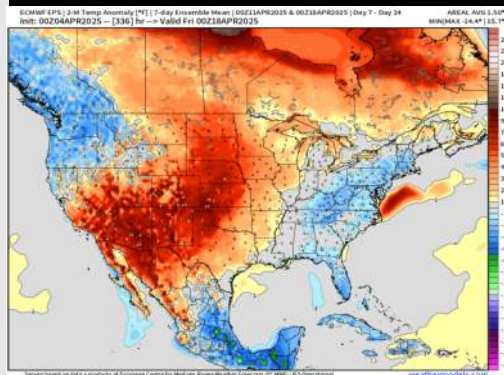
**High Temps**  
**Monday**

# Houston Pilots: 4/5/25

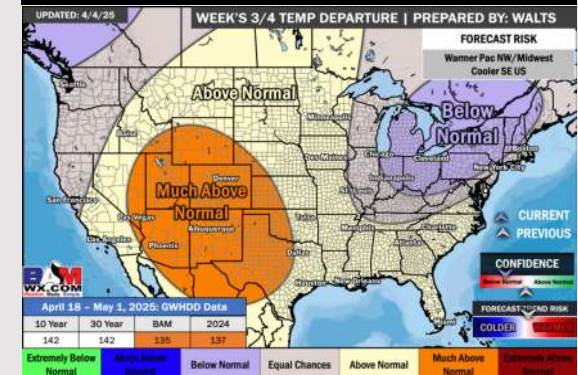
## Next 7 Day Temperature Departure



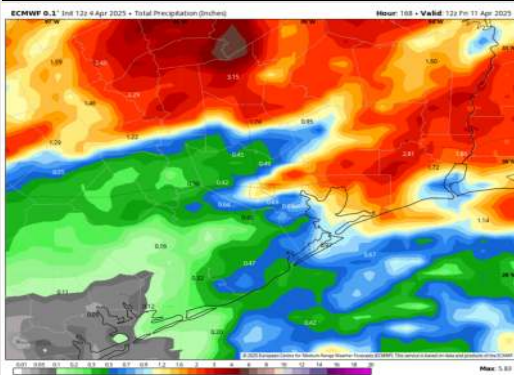
## 8-14 Day Temperature Departure



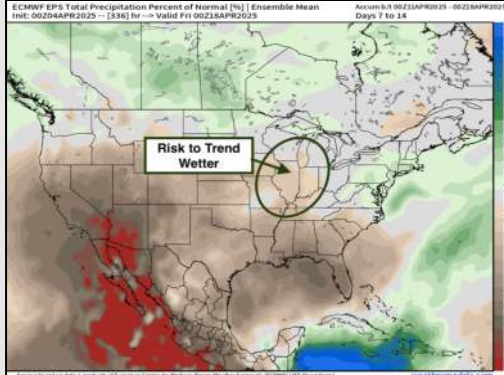
## 15-30 Day Temperature Departure



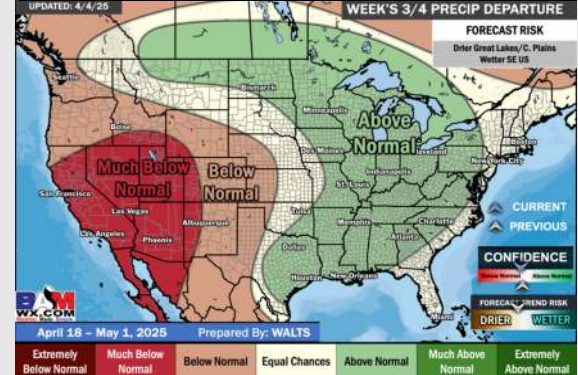
## Next 7 Day Total Precipitation



## 8-14 Day % of Average Precip.



## 15-30 Day % of Average Precip.



- Temps are expected to be slightly below normal for the next 7 days. Scattered showers and storms favored this weekend.
- Near normal temps and much below normal rainfall are expected for week 2.
- Above normal temperatures and above normal precipitation chances are expected for the weeks  $\frac{3}{4}$  timeframe.