

# ARE YOU REALLY PREPARED FOR SEVERE WEATHER?

**How to be proactive instead of reactive with  
severe weather threats.**



**BAM Weather**

[bamwx.com/get-started](https://bamwx.com/get-started)

# 01

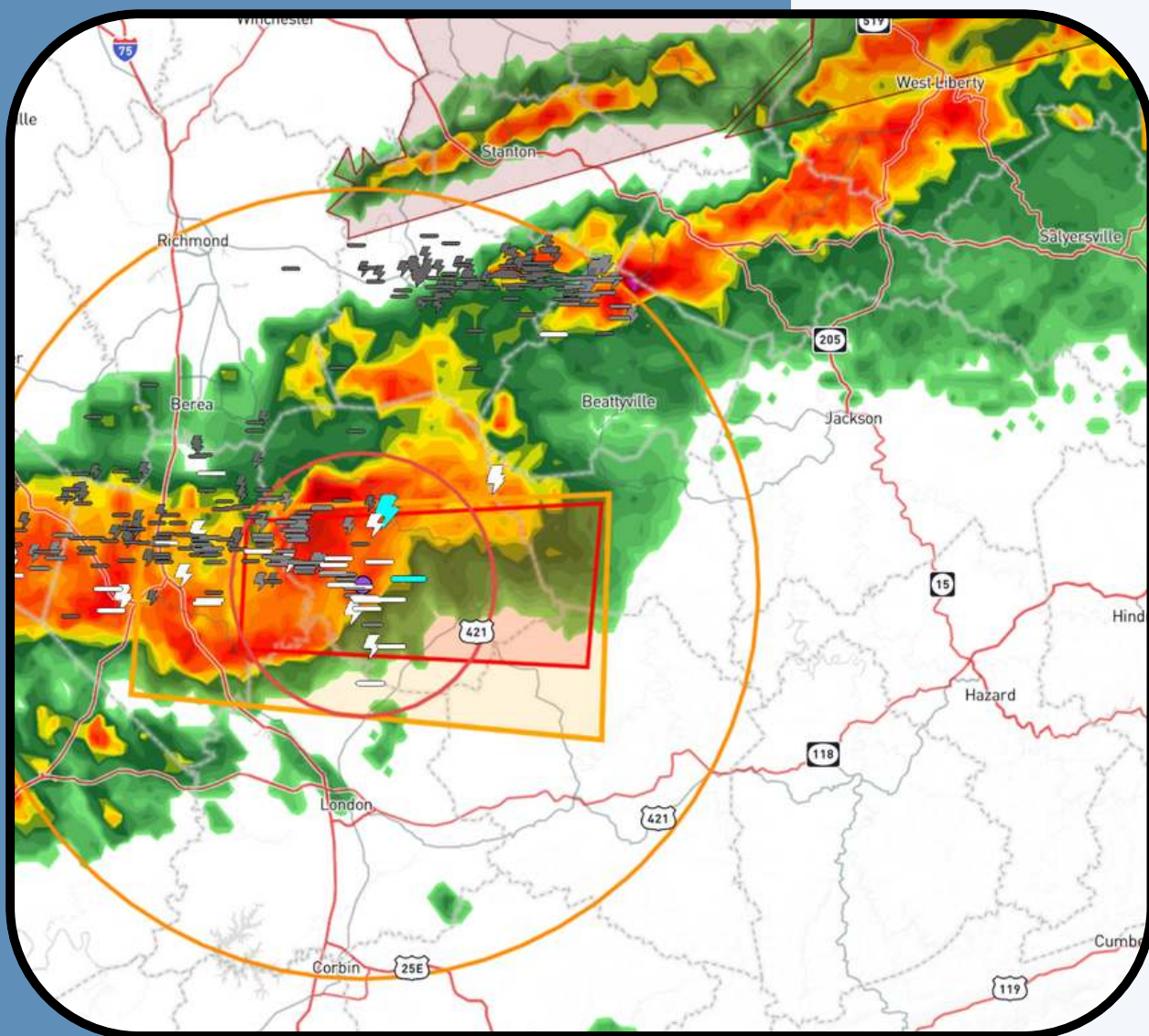
# ALERTS

## Beware of the Polygon!



*Severe thunderstorm and tornado warnings are **NOT** issued by county.*

*Ensure your source of alerts sends notifications for your **precise** location rather than county-based alerts. You can get precise alerts from a service like Clarity by BAMWX.*



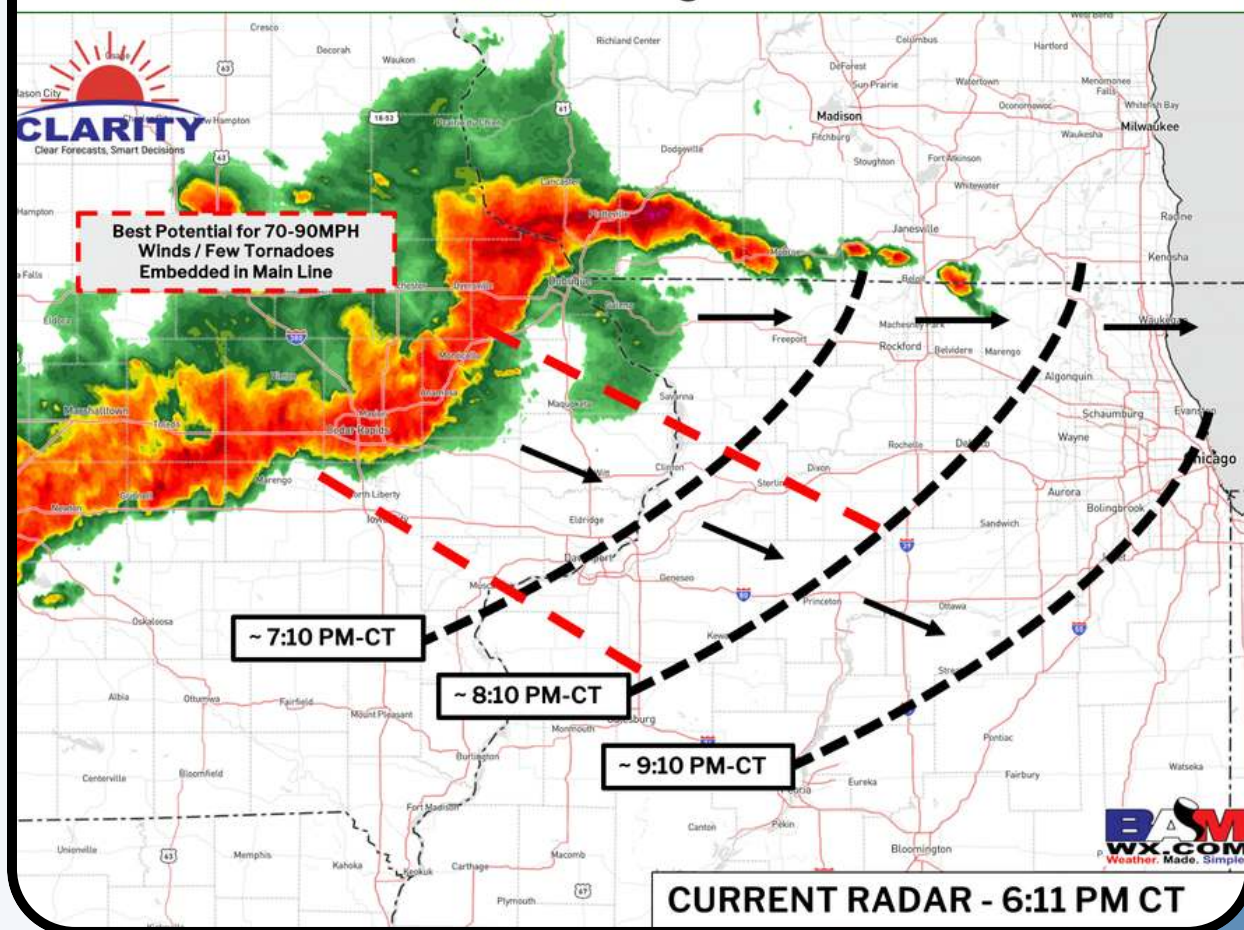
# 02

# TIMING

Don't wait for warnings to be issued to start to act.



ETA of Intensifying Storm Cluster with Locally 70-90MPH Straight Line Winds Pushing E / SE



*Depending on how long it takes to implement your action plan, a warning may not give you enough advanced notice.*

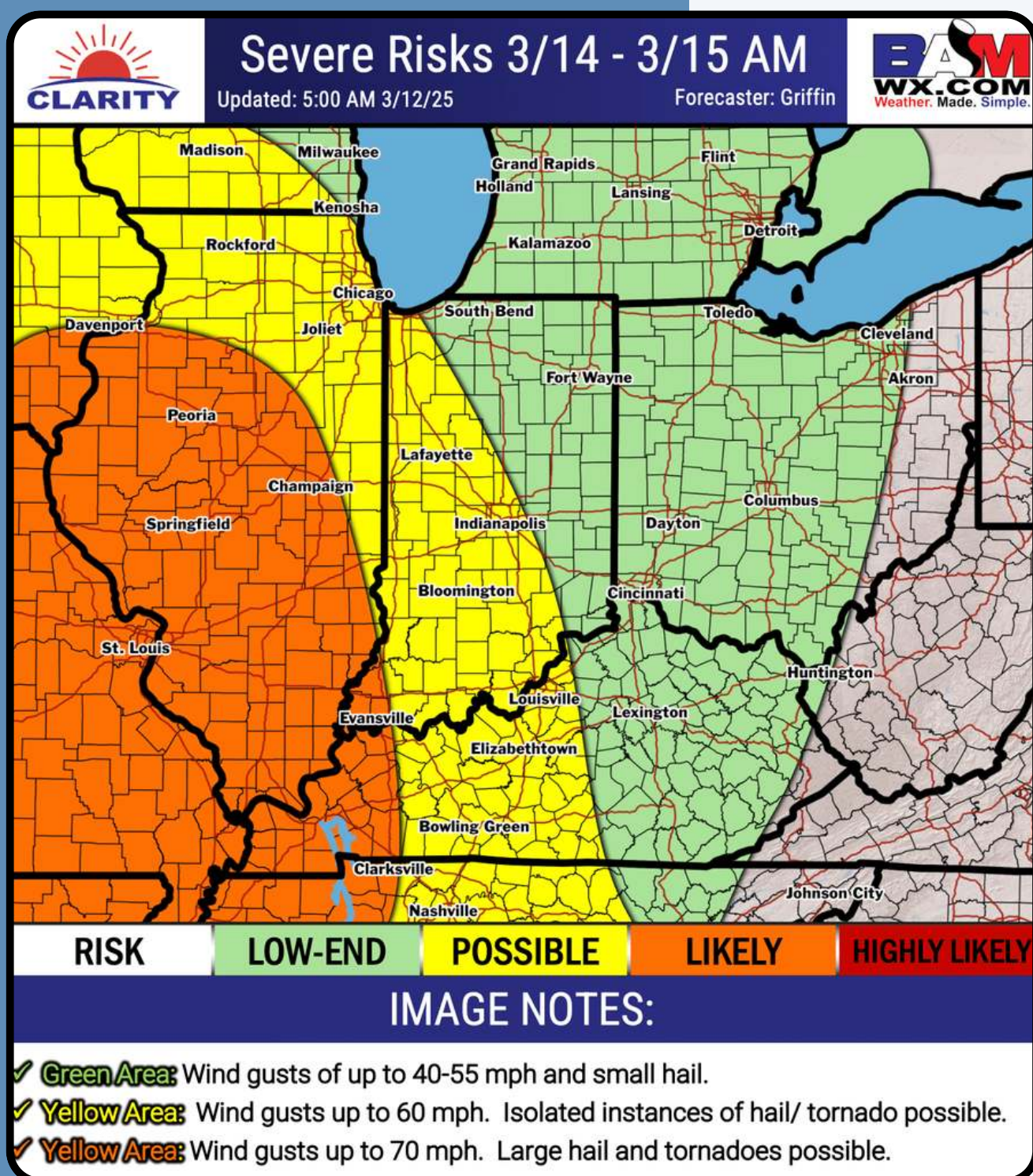
*Without more advanced notice, you may not have enough time to prepare or cancel unnecessarily. Utilize custom forecast insights or talk directly to a meteorologist with Clarity by BAMWX!*



# 03

# THREATS

In any severe weather event, there will likely be different weather threats for different parts of the storms impact zone.



*Days ahead, get an understanding of what severe weather threats apply to you and which ones don't so you can properly plan ahead.*



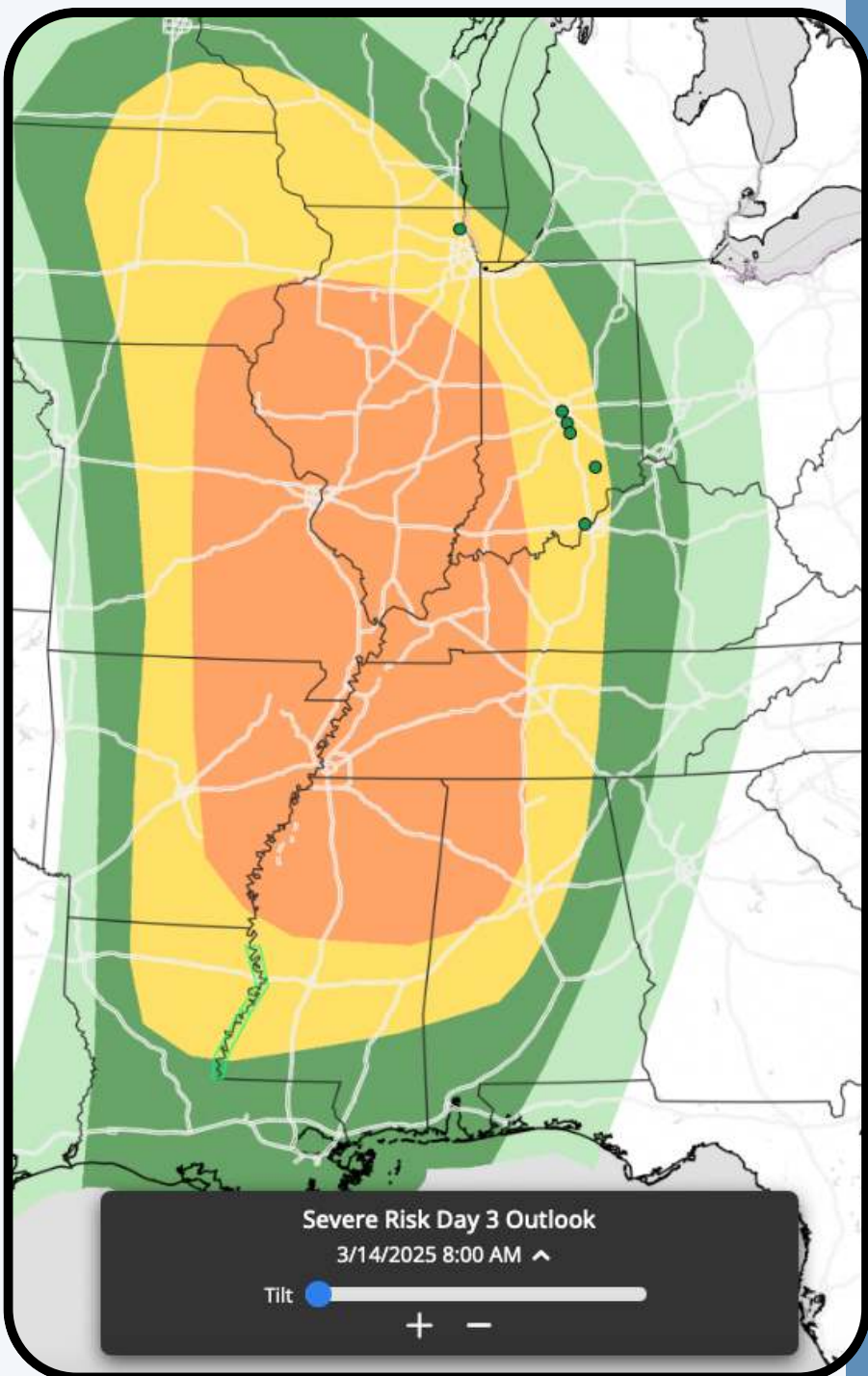
# 04

# RISK LEVELS

Chances are you will see a severe weather map from the Storm Prediction Center shared, but what do their risk levels mean?



1. **Marginal Risk** - Isolated Severe Storms Possible
2. **Slight Risk** - Scattered Severe Storms Possible
3. **Enhanced Risk** - Numerous Severe Storms Possible
4. **Moderate Risk** - Widespread severe storms likely.
5. **High Risk** - Widespread Severe Storms Expected.

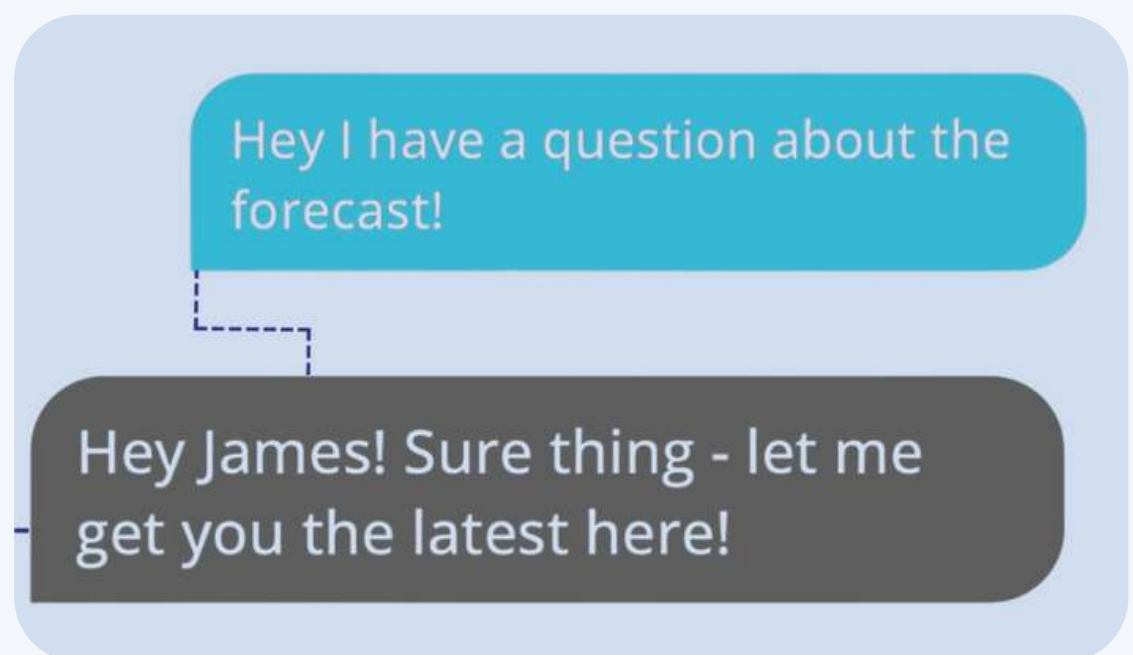


Source: NOAA

# 05

## COMMUNICATE

Whether it's days/hours before severe weather arrives - or as it's happening - communicating with an expert can help!



*Clarity by BAMWX provides each organization a personal chat directly in the platform with 24/7 availability.*

*Having a meteorologist help walk you through each threat can not only help with decisions, but give you peace of mind in a dangerous situation!*

# HOW DOES WEATHER IMPACT YOU?

Follow @bamweather  
for more.

