

Houston Pilots Forecast Package

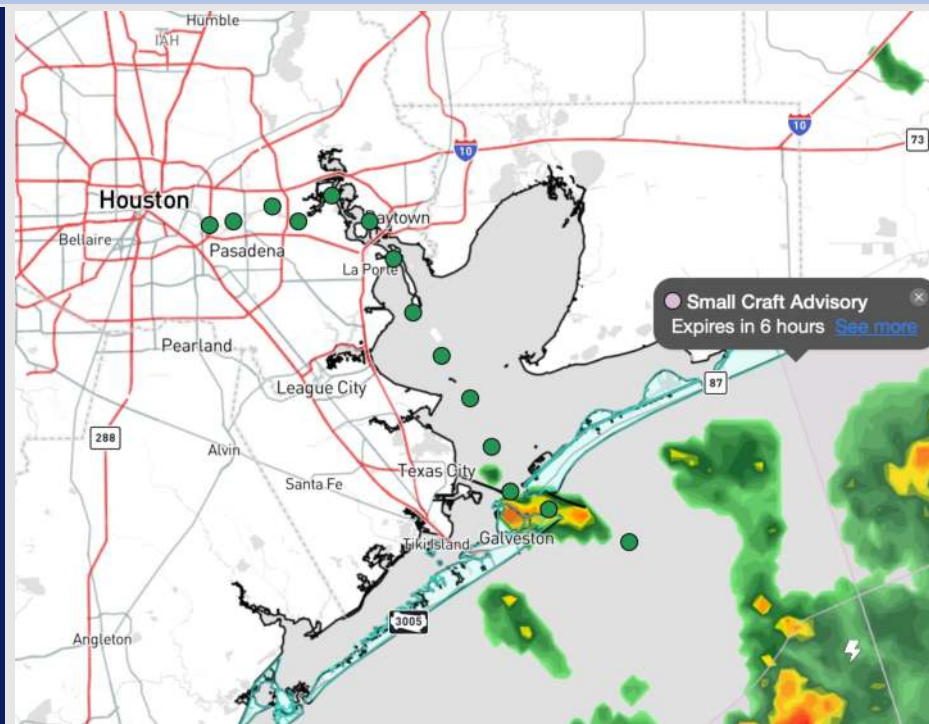


Updated: 10:30 PM CT
Friday, March 28, 2025

Forecaster: Tyler Riggles

Weather Headlines

- **Wave heights are expected to reach 3-5 ft** at the Boarding Station through noon today.
- Brief periods of heavy rain possible today, especially at the Boarding Station.
- Monitoring for sea fog risks to return on Monday, however confidence is low in this risk.



Current Radar 10:21 PM CT

As always, please do not hesitate to reach out to us with any forecast questions at **(317)-560-8122**. Press 1 for forecast questions.

You can also access real-time forecast updates and 24/7 meteorological chat assistance on your [Clarity](#) app. Click [here](#) for login assistance.



Houston Pilots Extended Range Visibility Report



Tuesday 4/1/25

Monitoring a low-end risk for sea fog to linger into Tuesday AM. Confidence is low.

Forecast Confidence



Thursday 4/3/25

No fog concerns for Thursday.

Forecast Confidence



Wednesday 4/2/25

No fog concerns for Wednesday.

Forecast Confidence



Chance for Fog

Tuesday AM	Low-End
Tuesday PM	Unlikely
Wednesday AM	Unlikely
Wednesday PM	Unlikely
Thursday AM	Unlikely
Thursday PM	Unlikely

Houston Pilots Visibility Chart (miles)



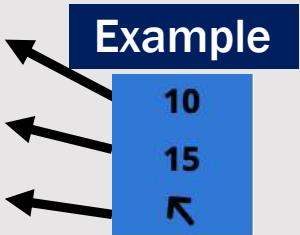
Visibility	Sat 12 am	Sat 1 am	Sat 2 am	Sat 3 am	Sat 4 am	Sat 5 am	Sat 6 am	Sat 7 am	Sat 8 am	Sat 9 am	Sat 10 am	Sat 11 am	Sat 12 pm	Sat 1 pm	Sat 2 pm	Sat 3 pm	Sat 4 pm	Sat 5 pm	Sat 6 pm	Sat 7 pm	Sat 8 pm	Sat 9 pm	Sat 10 pm	Sat 11 pm
Houston Pilots N - 610 Bridge	10	10	9	6.9	5.9	4.9	4.9	4.9	4.9	3.9	5.9	9	10	10	10	10	10	10	10	10	10	10	10	10
Houston Pilots M - Kinder 1	10	10	9	6.9	5.9	4.9	4.9	4.9	4.9	3.9	5.9	9	10	10	10	10	10	10	10	10	10	10	10	10
Houston Pilots L - Greens Bayou	10	10	9	6.9	5.9	4.9	4.9	4.9	4.9	3.9	5.9	10	10	10	10	10	10	10	10	10	10	10	10	10
Houston Pilots K - Shell Crude	10	10	10	6.9	5.9	4.9	4.9	4.9	4.9	3.9	5.9	10	10	10	10	10	10	10	10	10	10	10	10	10
Houston Pilots J - Lynchburg Ferries	10	10	9	6.9	5.9	4.9	4.9	4.9	4.9	3.9	5.9	10	10	10	10	10	10	10	10	10	10	10	10	10
Houston Pilots I - Exxon 3	10	10	10	6.9	5.9	4.9	4.9	4.9	4.9	3.9	5.9	10	10	10	10	10	10	10	10	10	10	10	10	10
Houston Pilots H - Morgans Point	10	10	9	6.9	5.9	4.9	4.9	3.9	4.9	3.9	5.9	10	10	10	10	10	10	10	10	10	10	10	10	10
Houston Pilots G - 75/76	7.9	9	9	6.9	6.9	7.9	6.9	3.9	6.9	6.9	7.9	10	10	10	10	10	10	10	10	10	10	10	0.2	6
Houston Pilots F - 63/64	7.9	9	9	6.9	6.9	7.9	6.9	5.9	6.9	6.9	7.9	10	10	10	10	10	10	10	10	10	10	10	1.1	6
Houston Pilots E - 51/52	6.9	6.9	6.9	6.9	6.9	2.9	5.9	5.9	6.9	6.9	9	10	10	10	10	10	10	10	10	10	10	10	2.5	5
Houston Pilots D - 37/38	6.9	6.9	6.9	6.9	6.9	2.9	5.9	5.9	6.9	6.9	7.9	10	10	10	10	10	10	10	10	10	9	10	4	2.5
Houston Pilots C - 25/26	6.9	6.9	6.9	6.9	5.9	2.9	5.9	5.9	6.9	6.9	6.9	9	10	10	10	10	10	10	9	10	9	10	2.5	1.6
Houston Pilots B - 11/12	6.9	6.9	6.9	4.9	4.9	2.9	3.9	5.9	3.9	6.9	6.9	9	10	10	10	10	10	10	9	9	7.9	9	0.7	0.2
Houston Pilots A - 1 & 2 Bravo	5.9	5.9	4.9	3.9	5.9	3.9	5.9	3.9	3.9	5.9	7.9	9	10	10	10	10	10	7.9	6.9	6.9	6.9	6.9	0	0

NOTE: This is automated data that may/may not agree with the official BAM thinking that's found on the daily slides or special visibility report slides. This data should be used as a guide only

Houston Pilots Wind Chart



Sustained wind 10 Knots
Gusts 15 Knots
Wind from the SE



Wind	Sat 12 am	Sat 1 am	Sat 2 am	Sat 3 am	Sat 4 am	Sat 5 am	Sat 6 am	Sat 7 am	Sat 8 am	Sat 9 am	Sat 10 am	Sat 11 am	Sat 12 pm	Sat 1 pm	Sat 2 pm	Sat 3 pm	Sat 4 pm	Sat 5 pm	Sat 6 pm	Sat 7 pm	Sat 8 pm	Sat 9 pm	Sat 10 pm	Sat 11 pm
Houston Pilots N - 610 Bridge	8	7	7	6	6	6	6	6	6	6	6	6	7	8	8	8	8	8	9	9	9	9	9	8
	15	15	15	14	14	13	13	12	12	12	13	13	14	15	15	16	16	16	17	17	18	18	17	17
Houston Pilots M - Kinder 1	8	7	7	7	6	6	6	6	6	6	6	6	7	8	8	8	8	8	9	9	9	9	9	8
	15	15	15	14	14	13	13	12	12	12	13	13	14	15	15	16	16	17	17	18	18	18	17	17
Houston Pilots L - Greens Bayou	8	8	7	7	6	6	6	6	6	6	6	6	7	8	8	8	8	9	9	9	9	9	8	8
	16	15	15	15	14	14	13	13	12	13	13	14	14	15	15	16	17	17	18	18	18	17	17	17
Houston Pilots K - Shell Crude	8	8	8	7	6	6	6	6	6	6	6	6	7	8	8	8	8	9	10	10	9	9	8	8
	16	15	16	15	14	14	13	13	12	13	13	14	14	15	15	16	17	17	18	18	18	17	17	17
Houston Pilots J - Lynchburg Ferries	8	8	8	7	6	6	6	6	6	6	6	6	7	8	8	8	8	9	9	10	9	9	8	8
	16	15	16	15	14	14	13	13	12	13	13	13	14	15	15	16	17	17	18	18	18	17	17	17
Houston Pilots I - Exxon 3	12	12	10	10	10	9	8	8	8	8	8	8	8	8	9	9	10	10	12	13	13	13	12	12
	18	17	17	17	16	15	15	14	13	13	13	14	15	15	16	17	17	18	18	20	20	18	18	17
Houston Pilots H - Morgans Point	12	12	12	10	10	9	8	8	8	8	8	8	8	8	9	9	10	10	12	13	13	12	12	10
	18	17	18	17	16	15	15	14	14	14	13	14	15	15	16	17	17	18	18	20	20	18	17	17
Houston Pilots G - 75/76	14	14	14	13	13	12	10	10	10	9	9	9	9	9	10	10	10	12	13	13	13	13	13	13
	21	21	20	18	17	17	17	16	15	15	15	15	15	17	17	18	18	20	20	20	20	18	18	18
Houston Pilots F - 63/64	15	14	14	13	13	13	12	10	10	10	9	9	9	10	10	10	10	12	13	13	13	13	13	13
	21	21	20	20	18	17	17	17	16	15	15	15	15	17	17	17	17	20	20	20	18	18	18	18
Houston Pilots E - 51/52	15	15	15	14	13	13	12	10	10	10	9	9	9	9	10	10	10	10	12	13	13	13	13	12
	22	22	21	20	20	18	17	17	16	15	15	15	15	16	16	17	17	18	18	18	17	17	17	17
Houston Pilots D - 37/38	15	15	15	14	13	13	12	10	10	10	9	9	9	9	10	10	10	10	10	12	13	12	12	12
	22	22	21	21	20	18	17	17	17	15	15	15	15	16	16	17	17	17	17	17	17	17	17	17
Houston Pilots C - 25/26	15	15	15	14	13	13	12	12	10	10	9	9	9	9	9	9	10	10	10	10	12	12	10	12
	22	22	21	21	20	18	18	17	17	15	15	15	15	16	16	16	16	16	16	16	16	16	16	17
Houston Pilots B - 11/12	14	14	14	13	13	13	12	10	10	10	9	8	9	9	9	9	9	9	10	10	10	10	10	10
	22	22	21	21	20	18	18	17	17	15	15	15	15	14	15	15	15	15	15	15	16	15	16	16
Houston Pilots A - 1 & 2 Bravo	17	17	16	15	15	15	14	13	13	12	10	10	9	9	8	8	8	9	10	10	10	12	12	12
	24	24	24	23	23	22	21	20	18	17	16	15	15	15	14	14	14	14	15	15	16	16	17	17

NOTE: This is automated data that may/may not agree with the official BAM thinking that's found on the daily slides.
This data should be used as a guide only.

Houston Pilots: SAT. 3/29/2025

Forecast Discussion

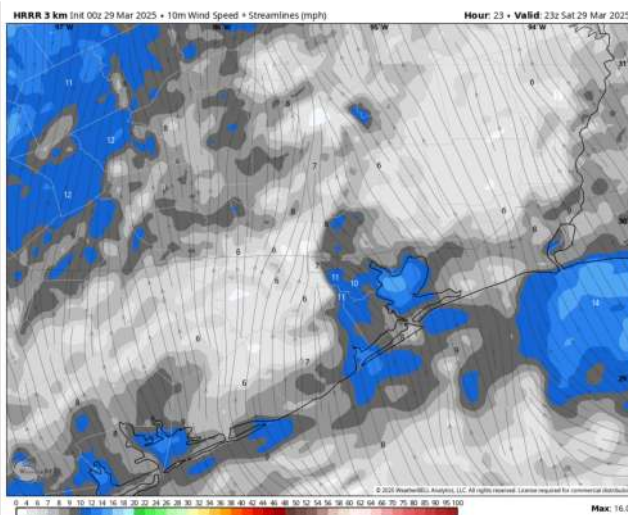
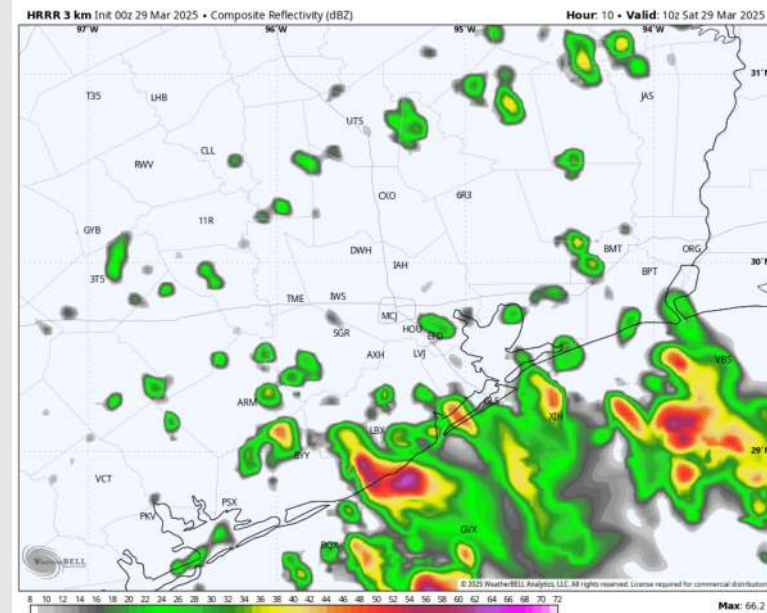
Precip: A few scattered showers will be possible from 12AM – 6AM (30%) mainly for Stations S. of Morgan's Point, with a few brief thunderstorms possible for the Boarding Station. After that time, only isolated showers will remain in play through 3PM for the Boarding Station ONLY (10%).

Wind: Winds will be someone variable with a southerly tendency through 3 PM before fully settling out of the SE. **N of Morgan's Point:** Winds will be at 3 – 8 kts throughout the day. **S of Morgan's Point:** Winds will be at 4 – 9 kts through 6 PM, slightly increasing to 7 – 12 kts after that time.

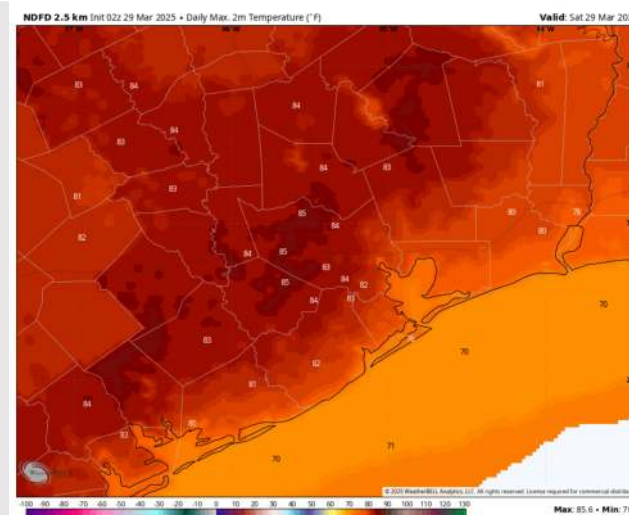
High Temps: **N of Morgan's Point:** Lower 80s F. **S of Morgan's Point:** Upper 70s F.

Visibility: No fog concerns for today.

Precip Image: 5 AM CT



Wind Speed:
6 PM CT



High Temps
Today

Houston Pilots: SUN. 3/30/2025

Forecast Discussion

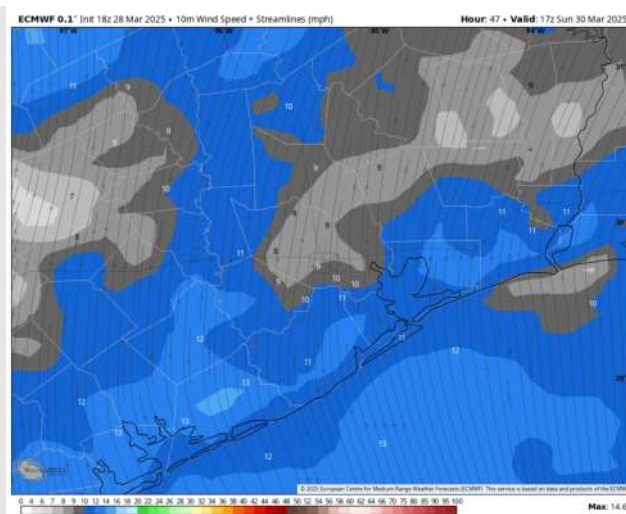
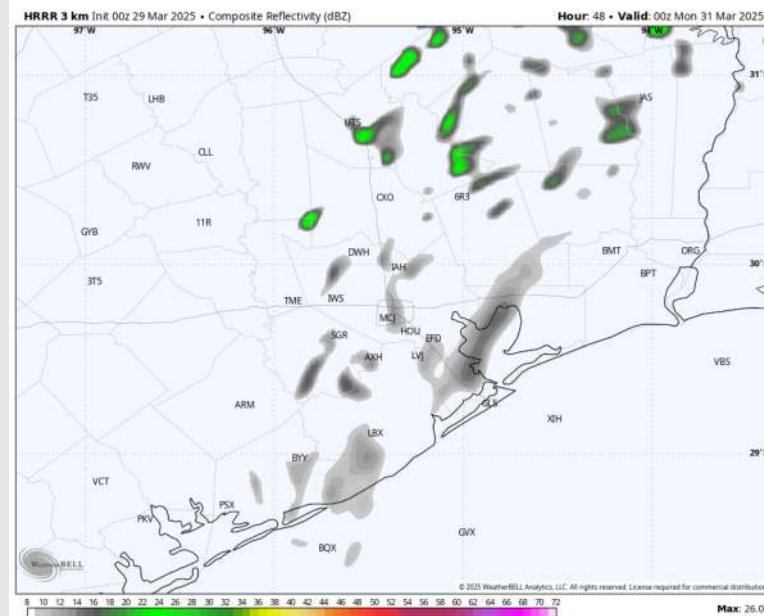
Precip: Scattered light showers in play for all Stations after 7 PM. Widespread storms are no longer favored for Sunday.

Wind: Winds will be out of the SE for all of Sunday. **N of Morgan's Point:** Winds will be at 5 - 10 kts through 2PM before increasing to 8 - 12 kts for the remainder of Sunday. **S of Morgan's Point:** Winds will be at 8-13kts for the entire day. **Non-thunderstorm wind gusts of 20- 25 kts will be possible for all Stations after 4PM on Sunday.**

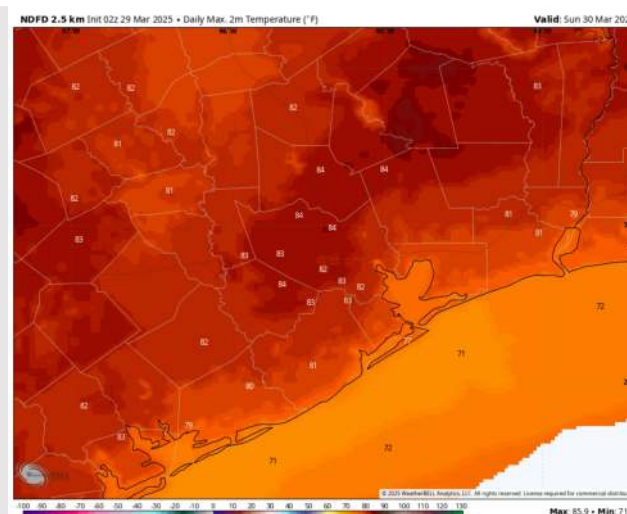
High Temps: **N of Morgan's Point:** Mid 80s F. **S of Morgan's Point:** Mid to upper 70s F.

Visibility: Not favoring any fog concerns for Sunday.

Precip Image: 7 PM CT



Wind Speed:
12 PM CT



High Temps
Sunday

Houston Pilots: MON. 3/31/2025

Forecast Discussion

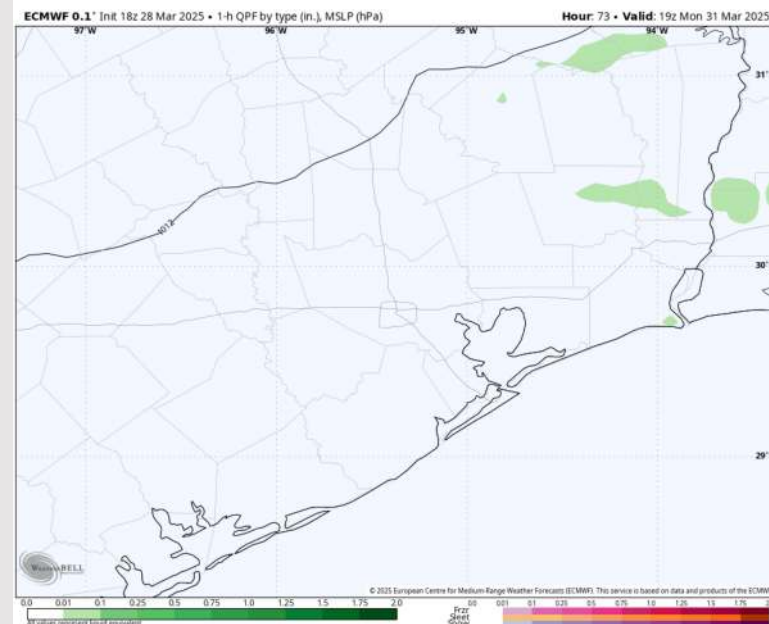
Precip: Favoring dry conditions for Monday.

Wind: Winds will be out of the SSW through 7 AM, briefly becoming variable through 12 PM. After that time, a boundary is expected to stall along the shoreline, keeping winds N of 25/26 out of the NNW and winds S of 25/26 out of the SSE. **N of Morgan's Point:** Winds will be at 3 - 8 kts throughout the day. **S of Morgan's Point:** Winds will be at 7 - 12 kts through 10 AM, decreasing to 4 - 9 kts for the rest of the day.

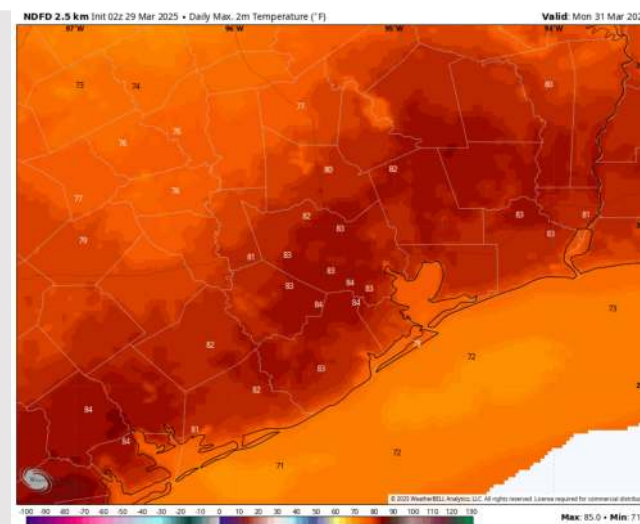
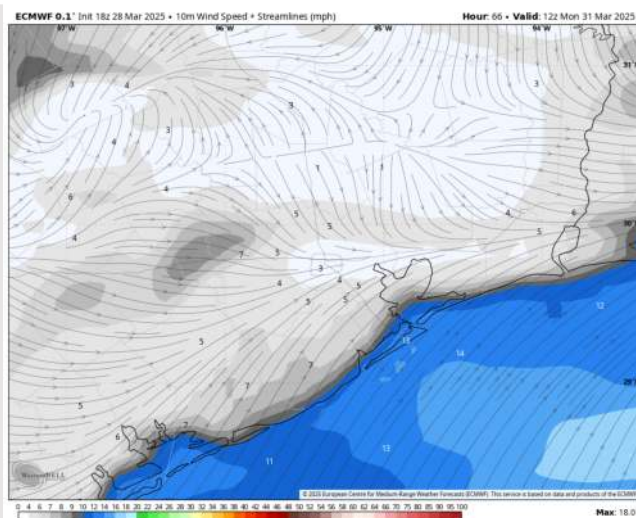
High Temps: **N of Morgan's Point:** Low 80s F. **S of Morgan's Point:** Upper 70s F.

Visibility: Monitoring a low-end sea fog risk for Stations S of Morgan's Point after 12 PM.

Precip Image: 2 PM CT



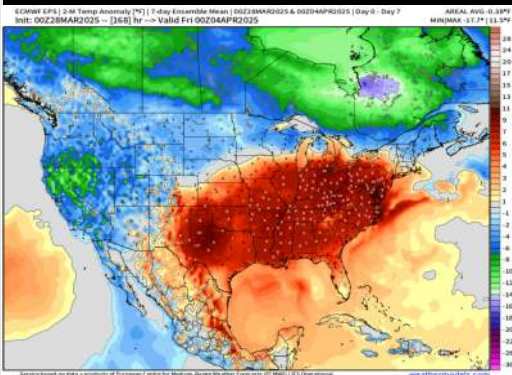
Wind Speed
7 AM CT



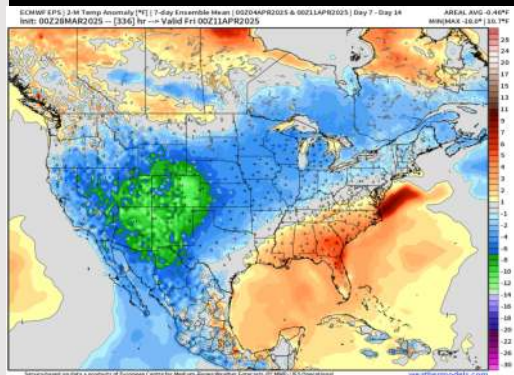
High Temps
Monday

Houston Pilots: 3/29/25

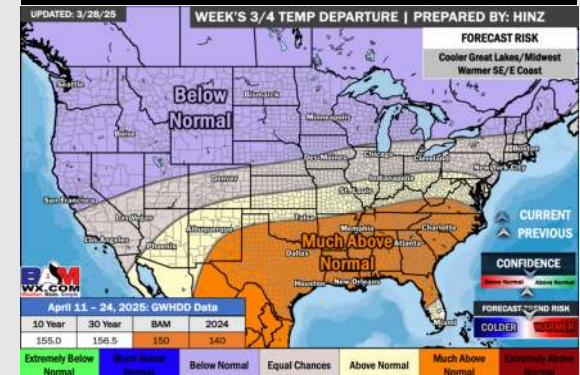
Next 7 Day Temperature Departure



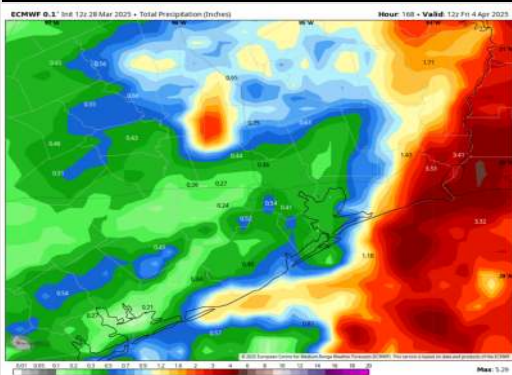
8-14 Day Temperature Departure



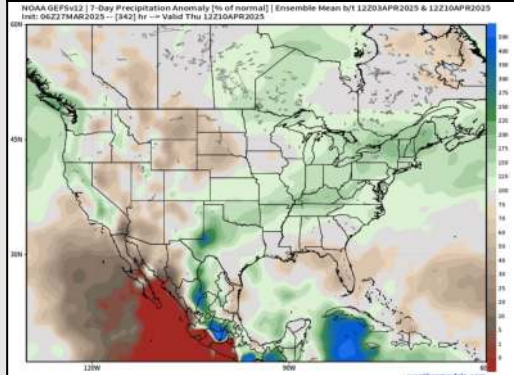
15-30 Day Temperature Departure



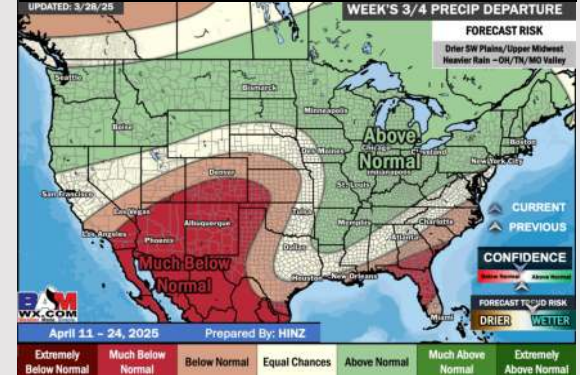
Next 7 Day Total Precipitation



8-14 Day % of Average Precip.



15-30 Day % of Average Precip.



- Temps are expected to be much above normal for the next 7 days. Rain chances continue into the weekend, with several inches of rainfall possible.
- Slightly above normal temps and near normal rainfall are expected for week 2.
- Much above normal temperatures and below normal precipitation chances are expected for the weeks $\frac{3}{4}$ timeframe.