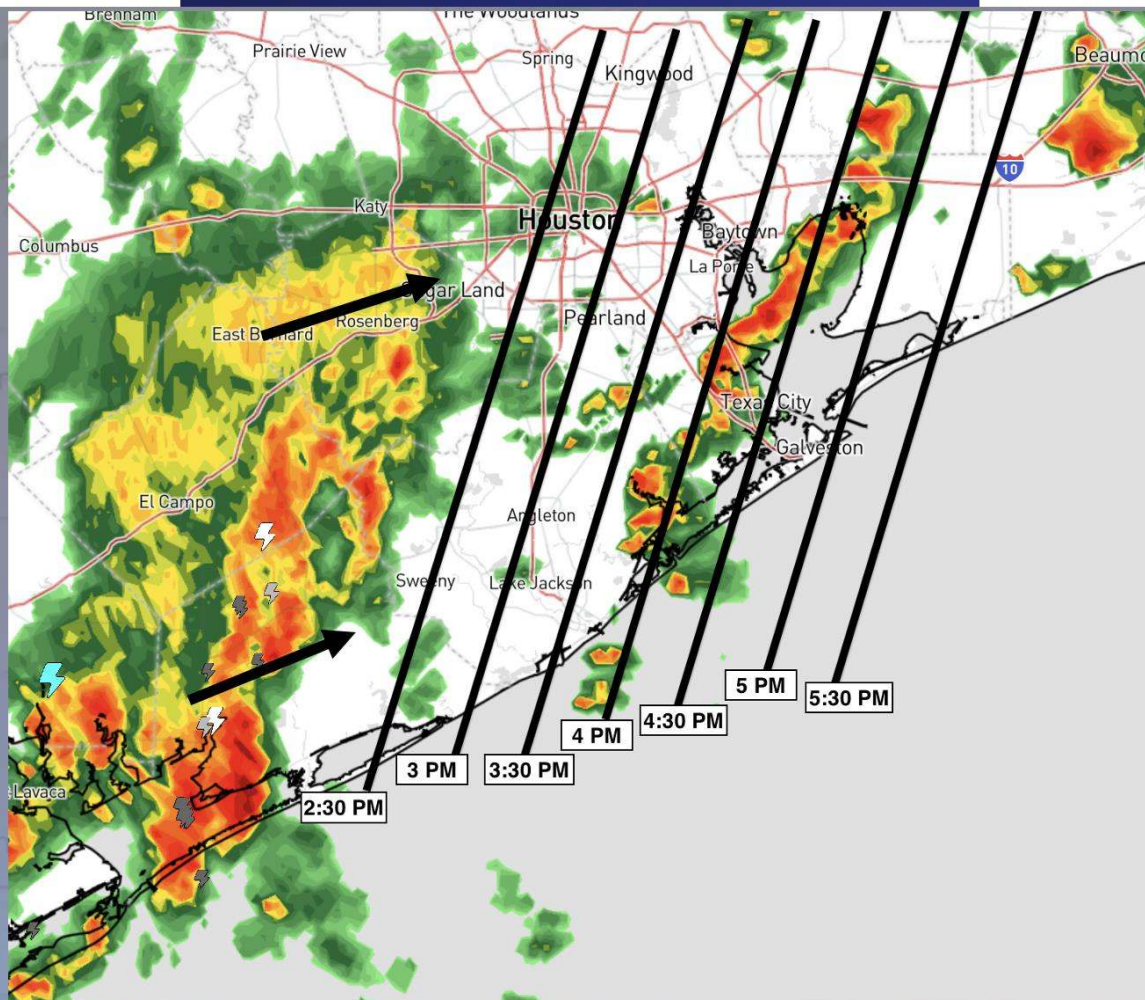




Strong/Severe Storm Cluster

Current: 2:00 PM CT 3/28/25

Forecaster: Elliott



FORECAST NOTES:

- ✓ **ARRIVAL TIMING for Strong to Severe Storm Cluster**
- ✓ The risk with these storms will be gusts of 50+ MPH, lightning, potentially large hail and an isolated tornado.



Houston Pilots Forecast Package



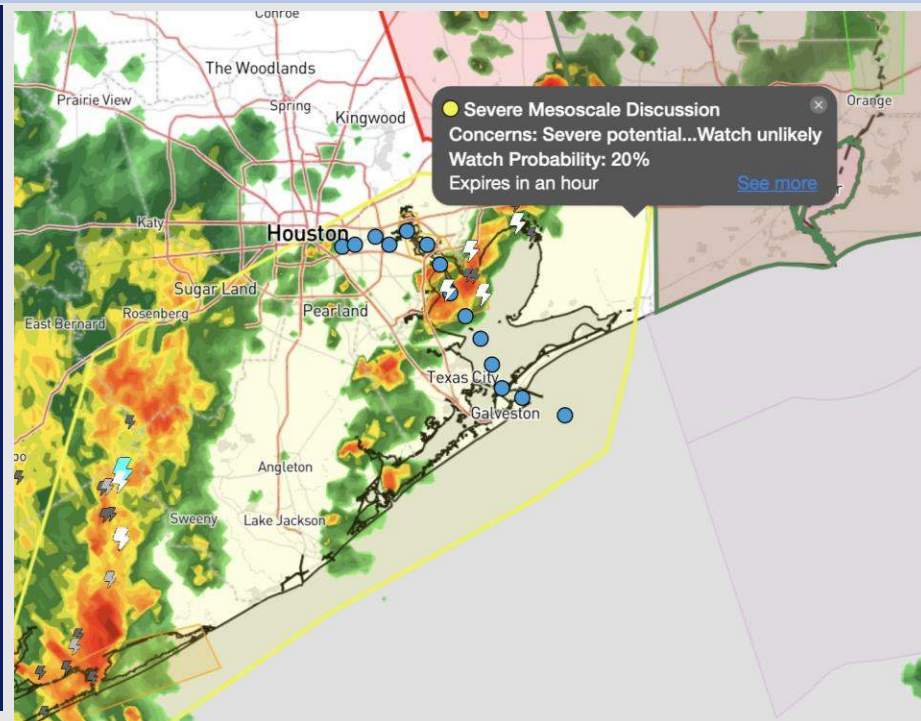
Updated: 2:35 PM CT

Friday, March 28, 2025

Forecaster: Alyssa Elliott

Weather Headlines

- **Risks for scattered, strong to severe storms will be in play this evening.**
- **Wave heights are expected to reach 3-5 ft at the Boarding Station through noon Saturday.**
- **Expect periods of heavy rain through SAT.**



Current Radar 2:30 PM CT

As always, please do not hesitate to reach out to us with any forecast questions at **(317)-560-8122**. Press 1 for forecast questions.

You can also access real-time forecast updates and 24/7 meteorological chat assistance on your [Clarity](#) app. Click [here](#) for login assistance.



Houston Pilots Extended Range Visibility Report



Monday 3/31/25

Visibility can be reduced under heavy downpours during the early AM. In addition, monitoring a low-end sea fog risk for the PM. Confidence is low.

Forecast Confidence



Wednesday 4/2/25

No fog concerns for Wednesday.

Forecast Confidence



Tuesday 4/1/25

No fog concerns for Tuesday.

Forecast Confidence



Chance for Fog

Monday AM	Unlikely
Monday PM	Unlikely
Tuesday AM	Unlikely
Tuesday PM	Unlikely
Wednesday AM	Unlikely
Wednesday PM	Unlikely

Houston Pilots Visibility Chart (miles)



Forecast Confidence

Above Normal

Below Normal

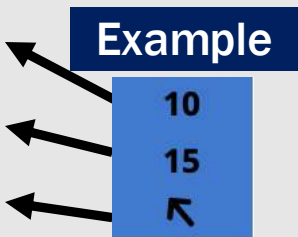
Visibility	Fri 3 pm	Fri 4 pm	Fri 5 pm	Fri 6 pm	Fri 7 pm	Fri 8 pm	Fri 9 pm	Fri 10 pm	Fri 11 pm	Sat 12 am	Sat 1 am	Sat 2 am	Sat 3 am	Sat 4 am	Sat 5 am	Sat 6 am	Sat 7 am	Sat 8 am	Sat 9 am	Sat 10 am	Sat 11 am	Sat 12 pm	Sat 1 pm	Sat 2 pm
Houston Pilots N - 610 Bridge	5.9	5.9	5.9	3.9	4.9	5.9	6.9	7.9	9	6.9	6.9	6.9	5.9	5.9	4.9	4.9	4.9	4.9	3.9	4.9	6.9	10	10	10
Houston Pilots M - Kinder 1	5.9	5.9	5.9	3.9	4.9	5.9	6.9	7.9	9	6.9	6.9	6.9	5.9	5.9	5.9	4.9	4.9	4.9	3.9	4.9	6.9	10	10	10
Houston Pilots L - Greens Bayou	5.9	5.9	5.9	3.9	4.9	6.9	6.9	7.9	9	6.9	6.9	6.9	6.9	5.9	5.9	4.9	4.9	4.9	4.9	4.9	8	10	10	10
Houston Pilots K - Shell Crude	5.9	5.9	5.9	3.9	4.9	6.9	6.9	7.9	9	7.9	6.9	6.9	6.9	6.9	5.9	5.9	5.9	4.9	4.9	5.9	8	10	10	10
Houston Pilots J - Lynchburg Ferries	5.9	5.9	3.9	4.9	4.9	5.9	6.9	7.9	9	7.9	6.9	6.9	6.9	6.9	5.9	5.9	5.9	4.9	4.9	5.9	8	10	10	10
Houston Pilots I - Exxon 3	5.9	5.9	2.5	5.9	4.9	6.9	6.9	7.9	9	7.9	6.9	6.9	6.9	6.9	5.9	5.9	5.9	5.9	4.9	5.9	9	10	10	10
Houston Pilots H - Morgans Point	5.9	5.9	3.9	5.9	4.9	6.9	7.9	7.9	9	7.9	7.9	6.9	6.9	6.9	6.9	5.9	5.9	5.9	4.9	5.9	9	10	10	10
Houston Pilots G - 75/76	5.9	5.9	3.9	5.9	4.9	6.9	7.9	7.9	7.9	6.9	6.9	6.9	6.9	6.9	7.9	7.9	7.9	7.9	6.9	7.9	10	10	4	8
Houston Pilots F - 63/64	5.9	3.9	3.9	5.9	4.9	6.9	7.9	7.9	7.9	6.9	6.9	6.9	6.9	6.9	7.9	7.9	7.9	7.9	6.9	7.9	10	10	4	7
Houston Pilots E - 51/52	4.9	3.9	6.9	3.9	4.9	6.9	7.9	7.9	7.9	6.9	7.9	6.9	6.9	6.9	7.9	7.9	7.9	7.9	6.9	9	10	10	4	7
Houston Pilots D - 37/38	4.9	5.9	6.9	3.9	6.9	6.9	7.9	7.9	7.9	6.9	7.9	6.9	6.9	7.9	7.9	7.9	7.9	9	6.9	9	10	10	5	8
Houston Pilots C - 25/26	4.9	5.9	6.9	3.9	6.9	6.9	7.9	6.9	9	6.9	7.9	6.9	6.9	7.9	7.9	7.9	7.9	9	6.9	9	10	10	6	8
Houston Pilots B - 11/12	4.9	5.9	6.9	3.9	5.9	6.9	7.9	6.9	9	6.9	6.9	6.9	6.9	7.9	7.9	9	9	9	6.9	9	10	10	7	8
Houston Pilots A - 1 & 2 Bravo	6.9	6.9	6.9	4.9	5.9	5.9	2.9	6.9	9	6.9	6.9	6.9	6.9	6.9	7.9	9	10	10	7.9	9	10	10	7	8

NOTE: This is automated data that may/may not agree with the official BAM thinking that's found on the daily slides or special visibility report slides. This data should be used as a guide only

Houston Pilots Wind Chart



Sustained wind 10 Knots
Gusts 15 Knots
Wind from the SE



Wind	Fri 3 pm	Fri 4 pm	Fri 5 pm	Fri 6 pm	Fri 7 pm	Fri 8 pm	Fri 9 pm	Fri 10 pm	Fri 11 pm	Sat 12 am	Sat 1 am	Sat 2 am	Sat 3 am	Sat 4 am	Sat 5 am	Sat 6 am	Sat 7 am	Sat 8 am	Sat 9 am	Sat 10 am	Sat 11 am	Sat 12 pm	Sat 1 pm	Sat 2 pm
Houston Pilots N - 610 Bridge	10	10	10	10	9	9	8	8	8	8	8	7	7	7	7	6	6	6	6	6	7	8	8	8
	21	22	21	21	20	18	18	17	17	17	15	15	15	15	14	14	13	13	13	14	14	15	16	16
	↗	↗	↗	↗	↗	↗	↗	↗	↗	↗	↗	↗	↗	↗	↗	↗	↗	↗	↗	↗	↗	↗	↗	
Houston Pilots M - Kinder 1	10	10	10	10	10	9	8	8	8	8	8	8	7	7	7	6	6	6	6	6	7	8	8	8
	21	22	22	21	20	18	18	17	17	17	16	15	15	15	15	14	13	13	13	14	14	15	16	16
	↗	↗	↗	↗	↗	↗	↗	↗	↗	↗	↗	↗	↗	↗	↗	↗	↗	↗	↗	↗	↗	↗	↗	
Houston Pilots L - Greens Bayou	10	10	10	10	10	9	9	8	8	8	8	8	7	7	7	6	6	6	6	6	7	8	8	8
	21	22	22	22	21	20	18	18	17	17	16	16	15	15	15	14	14	13	13	14	14	15	16	16
	↗	↗	↗	↗	↗	↗	↗	↗	↗	↗	↗	↗	↗	↗	↗	↗	↗	↗	↗	↗	↗	↗	↗	
Houston Pilots K - Shell Crude	10	12	12	10	10	9	9	9	8	8	8	8	8	7	7	6	6	6	6	6	7	8	8	8
	21	22	22	22	21	20	18	18	17	17	16	16	16	15	15	14	14	13	13	14	14	15	16	16
	↗	↗	↗	↗	↗	↗	↗	↗	↗	↗	↗	↗	↗	↗	↗	↗	↗	↗	↗	↗	↗	↗	↗	
Houston Pilots J - Lynchburg Ferries	10	12	12	10	10	9	9	8	8	8	8	8	8	7	7	6	6	6	6	6	7	8	8	8
	21	22	22	22	21	20	20	18	17	17	16	16	16	15	15	14	14	13	13	14	14	15	16	16
	↗	↗	↗	↗	↗	↗	↗	↗	↗	↗	↗	↗	↗	↗	↗	↗	↗	↗	↗	↗	↗	↗	↗	
Houston Pilots I - Exxon 3	12	13	13	13	13	13	13	13	13	13	12	12	10	10	10	9	8	8	8	8	8	8	9	9
	21	22	22	22	22	21	20	20	20	18	18	18	17	17	16	16	15	14	14	14	14	15	16	16
	↗	↗	↗	↗	↗	↗	↗	↗	↗	↗	↗	↗	↗	↗	↗	↗	↗	↗	↗	↗	↗	↗	↗	
Houston Pilots H - Morgans Point	13	13	13	13	13	13	13	13	13	13	12	12	10	10	10	9	9	8	8	8	8	8	9	9
	22	22	22	22	22	21	20	20	20	20	18	18	17	17	17	16	15	14	14	14	14	15	16	16
	↗	↗	↗	↗	↗	↗	↗	↗	↗	↗	↗	↗	↗	↗	↗	↗	↗	↗	↗	↗	↗	↗	↗	
Houston Pilots G - 75/76	14	14	14	15	15	15	15	15	15	15	15	14	14	13	13	12	10	10	10	10	10	10	10	10
	23	23	24	24	24	22	22	22	22	22	21	21	20	20	18	17	17	16	16	15	16	16	17	17
	↗	↗	↗	↗	↗	↗	↗	↗	↗	↗	↗	↗	↗	↗	↗	↗	↗	↗	↗	↗	↗	↗	↗	
Houston Pilots F - 63/64	14	14	14	15	15	15	15	15	15	15	15	14	14	13	13	13	12	10	10	10	10	10	10	10
	23	24	24	24	23	22	22	22	22	22	22	21	20	20	18	17	17	16	16	15	16	16	17	17
	↗	↗	↗	↗	↗	↗	↗	↗	↗	↗	↗	↗	↗	↗	↗	↗	↗	↗	↗	↗	↗	↗	↗	
Houston Pilots E - 51/52	14	14	14	15	15	15	15	15	15	15	15	15	14	14	13	13	12	10	10	10	10	10	10	10
	23	23	24	23	23	22	22	22	23	22	22	22	21	20	18	18	17	17	16	15	16	16	17	17
	↗	↗	↗	↗	↗	↗	↗	↗	↗	↗	↗	↗	↗	↗	↗	↗	↗	↗	↗	↗	↗	↗	↗	
Houston Pilots D - 37/38	14	14	14	15	15	15	15	15	15	15	15	15	15	14	13	13	12	10	10	10	10	10	10	10
	23	24	24	23	23	22	22	22	23	23	22	22	21	20	20	18	17	17	16	15	16	17	17	17
	↗	↗	↗	↗	↗	↗	↗	↗	↗	↗	↗	↗	↗	↗	↗	↗	↗	↗	↗	↗	↗	↗	↗	
Houston Pilots C - 25/26	14	14	14	15	15	15	15	15	15	15	15	15	14	14	13	13	12	10	10	10	10	10	10	10
	23	23	23	23	23	22	22	22	23	23	23	22	21	20	20	18	17	17	16	15	16	16	16	16
	↗	↗	↗	↗	↗	↗	↗	↗	↗	↗	↗	↗	↗	↗	↗	↗	↗	↗	↗	↗	↗	↗	↗	
Houston Pilots B - 11/12	14	14	14	14	14	14	14	15	15	15	15	14	14	13	13	12	10	10	10	9	9	9	9	9
	22	22	23	22	23	22	22	22	22	22	22	22	21	20	20	18	17	17	16	15	15	16	16	15
	↗	↗	↗	↗	↗	↗	↗	↗	↗	↗	↗	↗	↗	↗	↗	↗	↗	↗	↗	↗	↗	↗	↗	
Houston Pilots A - 1 & 2 Bravo	15	15	16	15	16	16	17	17	17	17	17	17	16	15	15	14	13	13	12	10	10	10	10	9
	24	24	24	24	24	24	24	25	24	25	24	24	24	23	22	21	20	18	17	17	17	17	16	15
	↗	↗	↗	↗	↗	↗	↗	↗	↗	↗	↗	↗	↗	↗	↗	↗	↗	↗	↗	↗	↗	↗	↗	

NOTE: This is automated data that may/may not agree with the official BAM thinking that's found on the daily slides.
This data should be used as a guide only.

Houston Pilots: FRI. 3/28/2025

Forecast Discussion

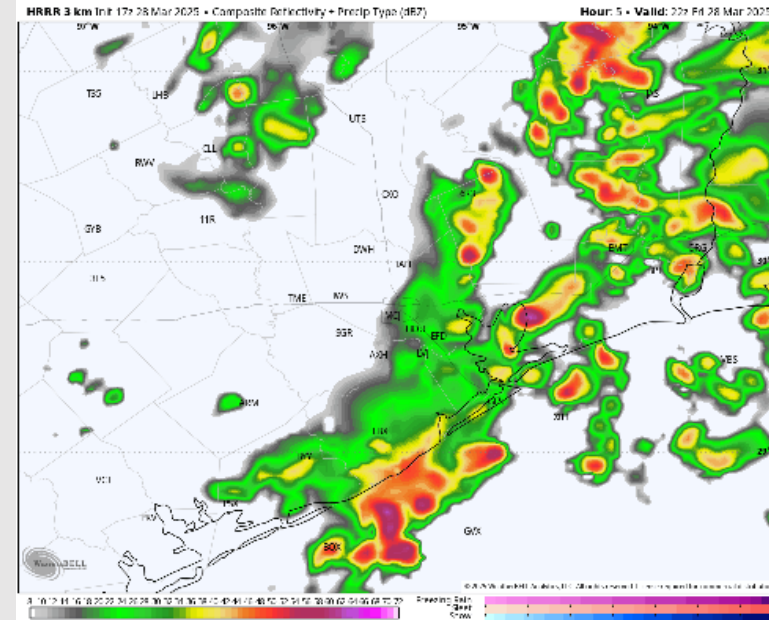
Precip: A few hit and miss storms are present this afternoon (20%). After 3 - 4 PM, coverage will become more widespread (80%). A few of these storms after 3 - 4 PM may be strong to severe with 40-50 kt gusts and large hail as the main threats through 7PM. A very isolated risk for a tornado cannot be ruled out however the better potential for this will be E of the Galveston Bay.

Wind: Winds will be out of the S/SE for all of this PM. **N of Morgan's Point:** Winds will be at 5 - 10 kts for all of the PM. **S of Morgan's Point:** Winds will be at 18 - 23 kts through 3PM, decreasing to 10 - 15 kts for the rest of the PM. Non-storm gusts at 20 - 25 kts favored for the remainder of the day.

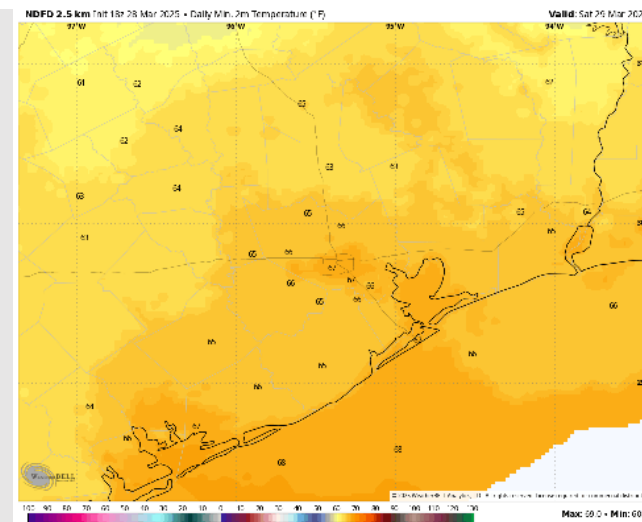
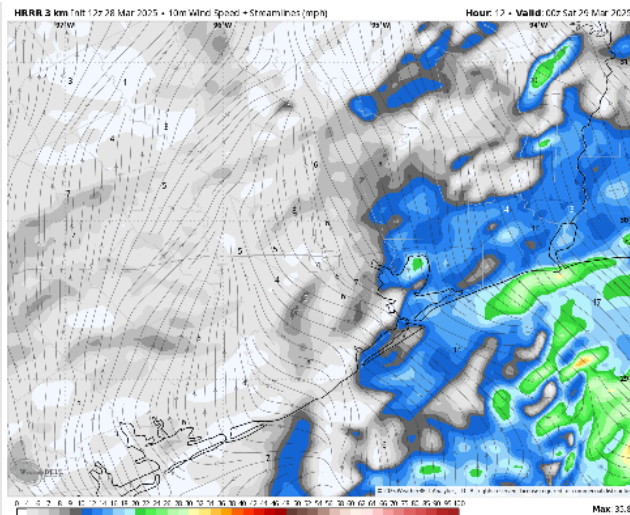
Low Temps: **N of Morgan's Point:** Mid 60s F. **S of Morgan's Point:** Mid 60s F.

Visibility: No concerns for today, outside of reduced visibilities from downpours.

Precip Image: 5 PM CT



Wind Speed
7 PM CT



Low Temps
SAT AM

Houston Pilots: SAT. 3/29/2025

Forecast Discussion

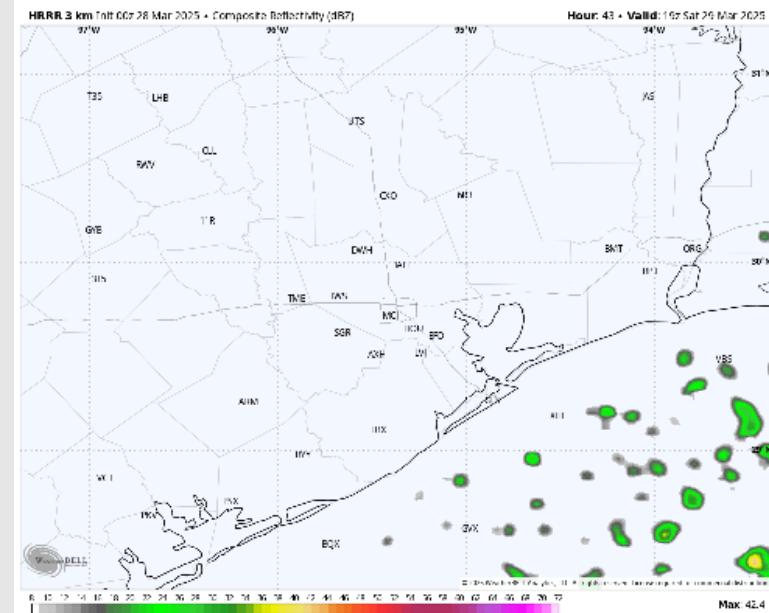
Precip: A few scattered showers will be possible from 12AM – 6AM (30%) mainly for Stations S. of Morgan's Point, before only isolated showers will remain in play through 3PM for the Boarding Station ONLY (10%).

Wind: Winds will be out of the S through 3PM, before shifting to be out of the SE. **N of Morgan's Point:** Winds will be at 3 – 8 kts throughout the day. **S of Morgan's Point:** Winds will be at 8 – 13 kts for all of Saturday.

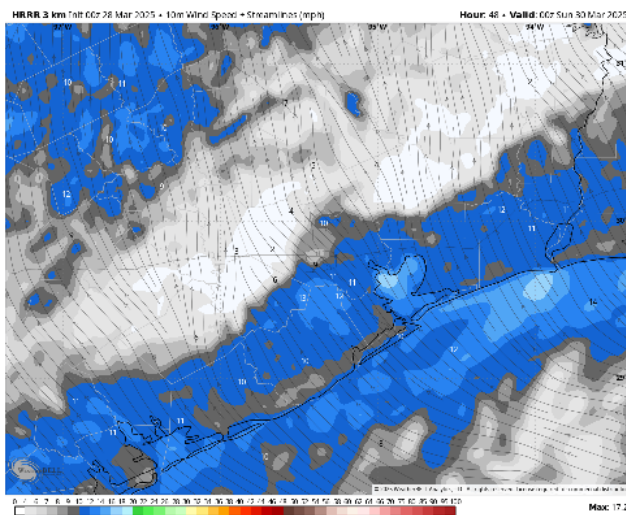
High Temps: **N of Morgan's Point:** Lower 80s F. **S of Morgan's Point:** Upper 70s F.

Visibility: No fog concerns for Saturday.

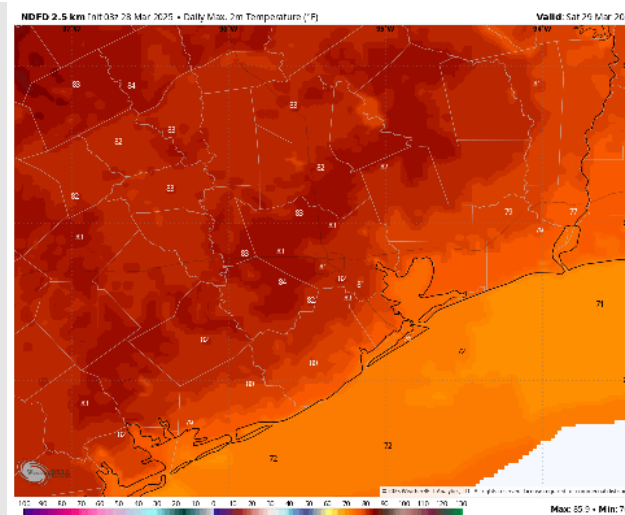
Precip Image: 2 PM CT



Wind Speed:
7 PM CT



High Temps
Saturday



Precip Image: 6 PM CT

High Temps: N of Morgan's Point: Mid 80s F. S of Morgan's Point: Mid to upper 70s F.

ECMWF 0.1° time 18z 07 Mar 2025 + 10m Wind Speed + Streamlines (png)

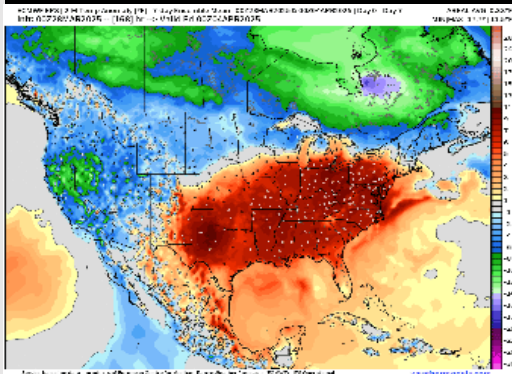
Hour: 22 • Valid: 18z Sun 30 Mar 2025

The image is a meteorological map showing a low-pressure system (marked with a 'C') over the North Atlantic. The map displays 10m wind speed using a color scale from blue (light) to red (strong) and streamlines indicating wind direction. The map covers the region from 10°N to 50°N and 10°W to 40°W. The coastline of North America is visible on the right side. The map is titled 'ECMWF 0.1° time 18z 07 Mar 2025 + 10m Wind Speed + Streamlines (png)' and 'Hour: 22 • Valid: 18z Sun 30 Mar 2025'. A legend at the bottom indicates the color scale for wind speed and the meaning of the streamlines.

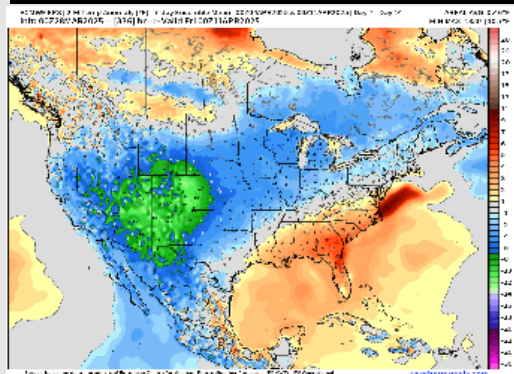
High Temps Sunday

Houston Pilots: 3/28/25

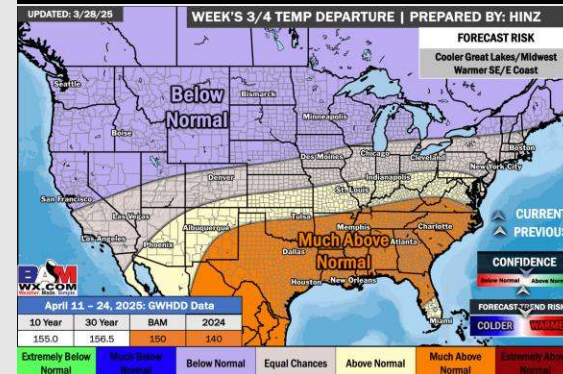
Next 7 Day Temperature Departure



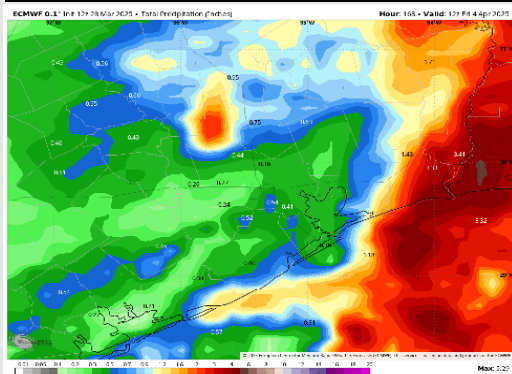
8-14 Day Temperature Departure



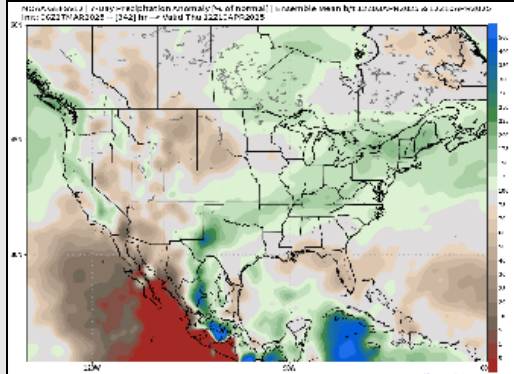
15-30 Day Temperature Departure



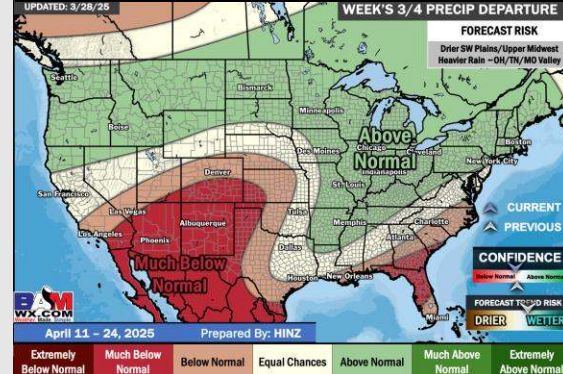
Next 7 Day Total Precipitation



8-14 Day % of Average Precip.



15-30 Day % of Average Precip.



- Temps are expected to be much above normal for the next 7 days. Rain chances continue into the weekend, with several inches of rainfall possible.
- Slightly above normal temps and near normal rainfall are expected for week 2.
- Much above normal temperatures and below normal precipitation chances are expected for the weeks $\frac{3}{4}$ timeframe.